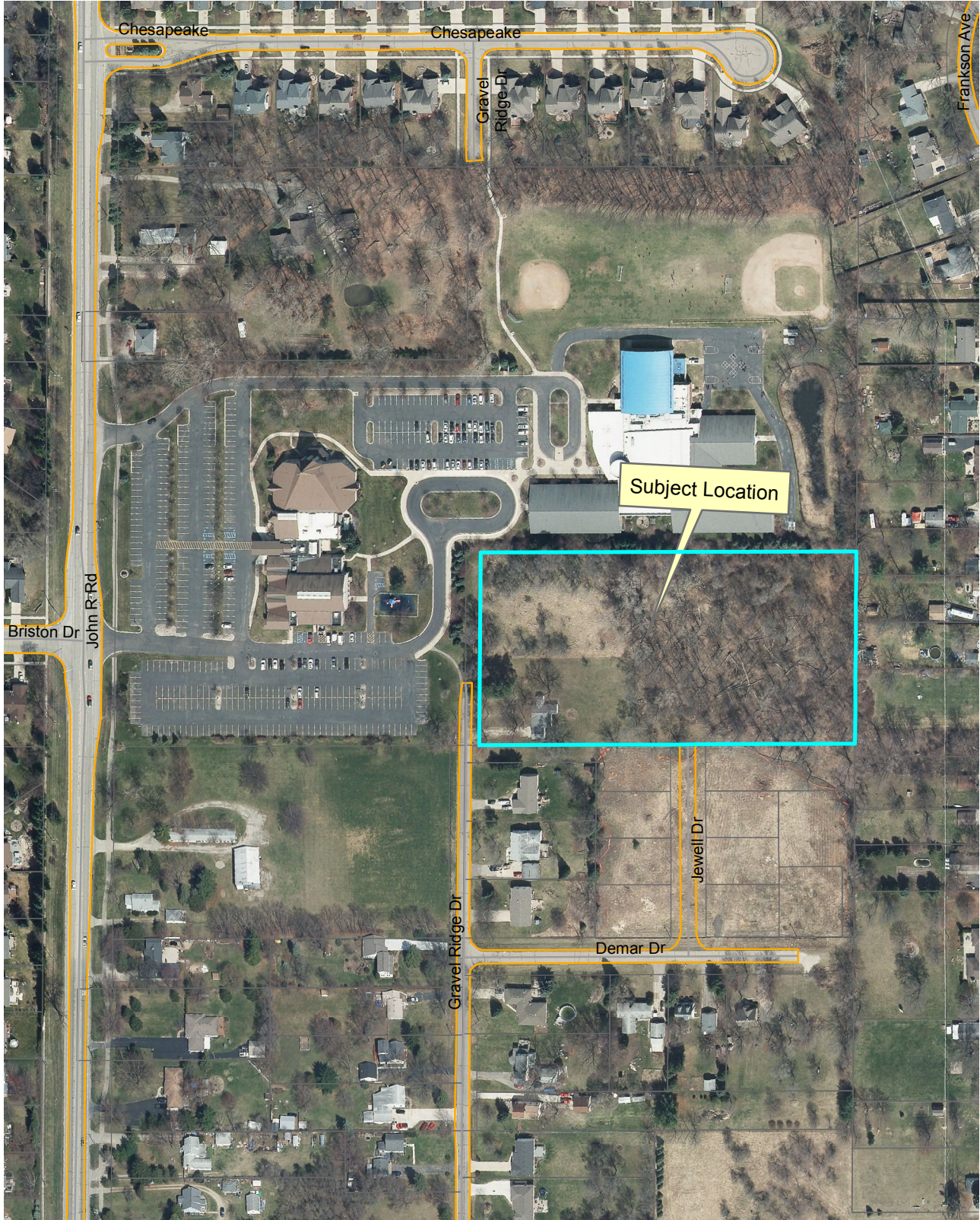


Location Map

Holy Family School Recreation Area



Legend	
	Boundary - 2010 General Replat
	Subparcel
	Parcel Edge
Photo-TCD 15.0.0	
	Red - Bank_1
	Green - Bank_2
	Blue - Bank_3

Aerial photographs as of April 2010
 TaxParcel lines were obtained on 1/2/14 from Oakland County.
 Although the information provided by this map is believed to be reliable, its accuracy is not warranted in any way. The City of Rochester Hills assumes no liability for any claims arising from the use of this map.

1/2/15

1 inch = 250 feet