

LOCATION MAP  
 N.T.S.

**TREE PRESERVATION SUMMARY:**

TOTAL NUMBER OF TREES SURVEYED:	76
LESS NUMBER OF DEAD TREES:	1
LESS NUMBER OF R.O.W. TREES:	7
NET TREES ON-SITE:	68
TOTAL REGULATED TREES TO BE REMOVED:	30
TOTAL SPECIMEN TREES TO BE REMOVED:	5 (1 EXEMPT)
TOTAL TREES TO REMAIN:	33
MINIMUM PRESERVATION REQUIREMENT 68 TREES - 6 TREES IN BUILDING ENVELOPE = 62 X 40% =	25 TREES NEED TO BE PRESERVED 33 TREES PROPOSED TO BE SAVED
TREE REPLACEMENT TOTAL REMOVALS:	35 TREES
TOTAL REGULATED REPLACEMENT TREES REQUIRED:	30 TREES
TOTAL SPECIMEN REPLACEMENT TREES REQUIRED (110% x 50% = 54.5/2):	28 TREES
LESS SPECIMEN CREDITS:	-1 TREES
TOTAL REPLACEMENT TREES REQUIRED:	27 TREES
TOTAL REPLACEMENT TREES PROVIDED:	MONIES FOR 57 TREES TO BE PAID INTO TREE FUND (\$334 X 57 = \$19,038)

TRP

**GENERAL TREE PROTECTION NOTES**

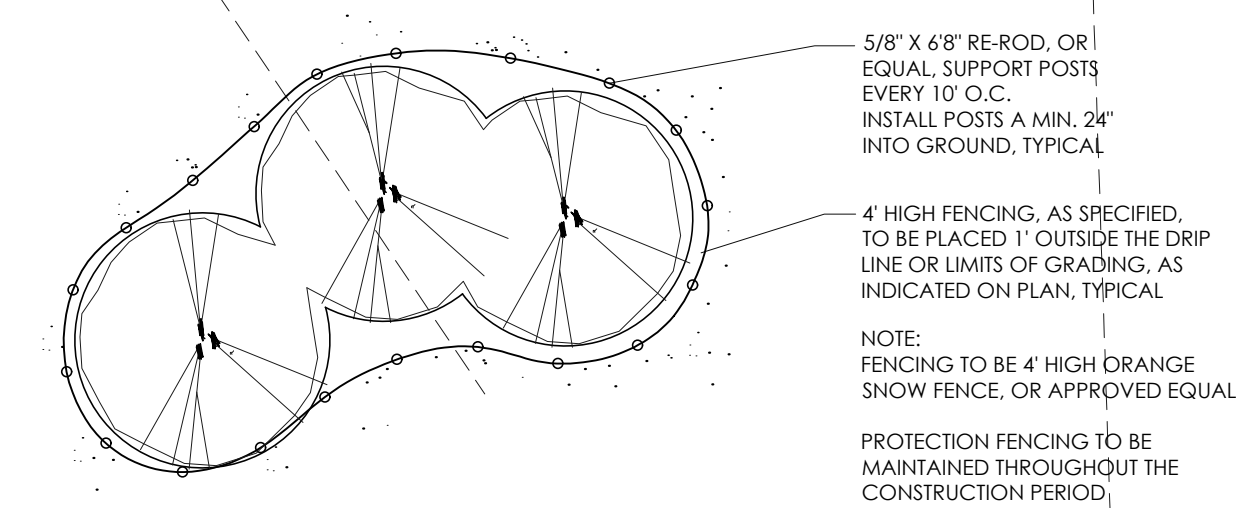
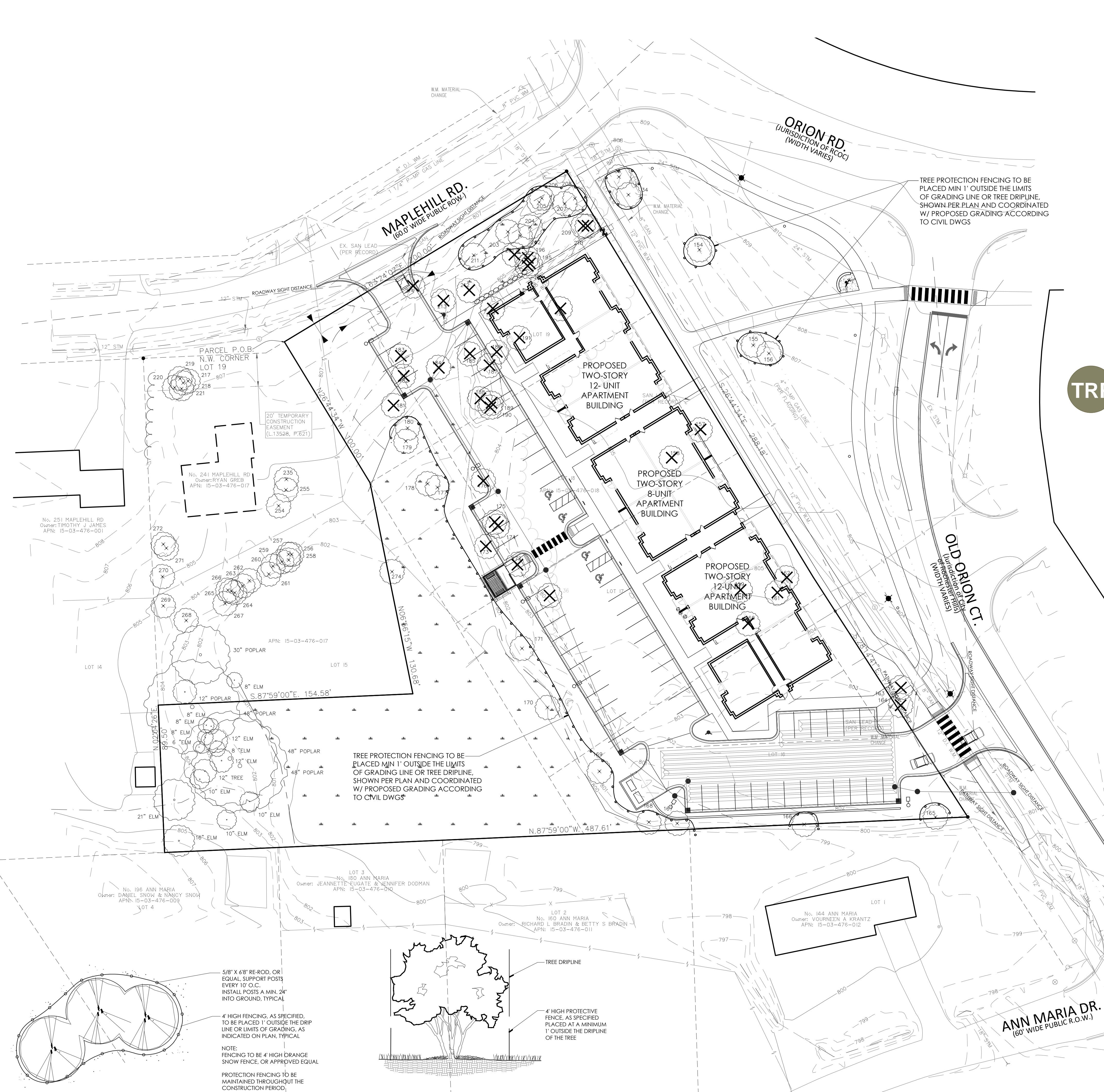
- APPROVED TREE PROTECTION SHALL BE ERRECTED PRIOR TO THE START OF CONSTRUCTION ACTIVITIES, AND SHALL REMAIN IN PLACE UNTIL THE IN PLACE UNTIL CONSTRUCTION IS COMPLETE.
- ALL UNDERSTORY VEGETATION WITHIN THE LIMITS OF PROTECTIVE FENCING SHALL BE PRESERVED.
- NO PERSON MAY CONDUCT ANY ACTIVITY WITHIN THE DRIP LINE OF ANY TREE DESIGNATED TO REMAIN, INCLUDING BUT NOT LIMITED TO, PLACING SOLVENTS, BUILDING MATERIALS, CONSTRUCTION EQUIPMENT, OR SOIL DEPOSITS WITHIN THE DRIP LINE.
- WHERE GROUPINGS OF TREES ARE TO REMAIN, TREE FENCING SHALL BE PLACED AT THE LIMITS OF GRADING LINE.
- DURING CONSTRUCTION, NO PERSON SHALL ATTACH ANY DEVICE OR WIRE TO ANY TREE SCHEDULED TO REMAIN.
- ALL UTILITY SERVICE REQUESTS MUST INCLUDE NOTIFICATION TO THE INSTALLER THAT PROTECTED TREES MUST BE AVOIDED. ALL TRENCHING SHALL OCCUR OUTSIDE OF THE PROTECTIVE FENCING.
- SWALES SHALL BE ROUTED TO AVOID THE AREA WITHIN THE DRIP LINES OF PROTECTED TREES.
- TREES LOCATED ON ADJACENT PROPERTIES THAT MAY BE AFFECTED BY CONSTRUCTION ACTIVITIES MUST BE PROTECTED.
- ROOT ZONES OF PROTECTED TREES SHOULD BE SURROUNDED WITH RIGIDLY STAKED FENCING.
- THE PARKING OF IDLE AND RUNNING EQUIPMENT SHALL BE PROHIBITED UNDER THE DRIP LINE OF PROTECTED TREES.
- THE STRIPPING OF TOPSOIL FROM AROUND PROTECTED TREES SHALL BE PROHIBITED.
- ALL TREES TO BE REMOVED SHALL BE CUT ABOVE TREES TO REMAIN.
- THE GRUBBING OF UNDERSTORY VEGETATION WITHIN CONSTRUCTION AREAS SHOULD BE CLEARED BY CUTTING VEGETATION AT THE GROUND WITH A CHAIN SAW OR MINIMALLY WITH A HYDRO-AXE.
- THE CONTRACTOR IS RESPONSIBLE FOR THE REPLACEMENT PER ORDINANCE GUIDELINES, FOR THE DAMAGE OR REMOVAL OF ANY TREE DESIGNATED TO REMAIN.
- TREES TO BE REMOVED SHALL BE FIELD VERIFIED, EVALUATED AND FLAGGED FOR REMOVAL, BY THE LANDSCAPE ARCHITECT OR FORESTER, ONLY AS DIRECTED BY THE OWNER OR OWNERS REPRESENTATIVE.

**PROTECTIVE FENCING NOTE:**

TREE PROTECTION AND SILT FENCING, AS REVIEWED AND APPROVED BY CITY STAFF, SHALL BE INSTALLED PRIOR TO THE ISSUANCE OF THE LAND IMPROVEMENT PERMIT.

**LEGEND:**

- X TREES TO BE REMOVED
- 550 X TREES TO REMAIN
- TREE PROTECTION FENCING



TREE PROTECTION DETAIL-PLAN  
 N.T.S.

TREE PROTECTION DETAIL-SECTION  
 N.T.S.

SEAL



PROJECT  
 Old Orion Court  
 Development

CLIENT  
 Mark Bismack  
 5319 23 Mile Road  
 Shelby Township, MI 48306

Care of:  
 Krieger Klatt Architects  
 Contact: Mr. Jeff Klatt, AIA  
 Phone: (248) 414-9270  
 Email: Jeff@kriegerklatt.com

PROJECT LOCATION  
 Part of the SE 1/4  
 of Section 3  
 T. 3N., R. 11E.  
 City of Rochester Hills,  
 Oakland County, Michigan

SHEET  
 Tree Preservation Plan



REVISIONS

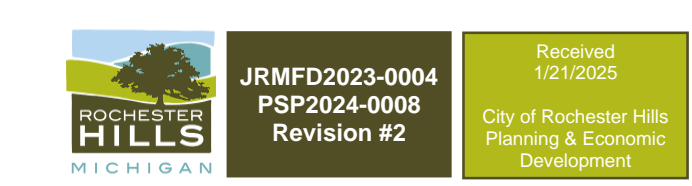
04/24/24 SPA
07/15/24 SPA
11/06/24 REVISED PER CITY
01/13/25 SPA REV #2

DRAWN BY:  
 G. Ostrowski  
 DESIGNED BY:  
 G. Ostrowski  
 APPROVED BY:  
 G. Ostrowski

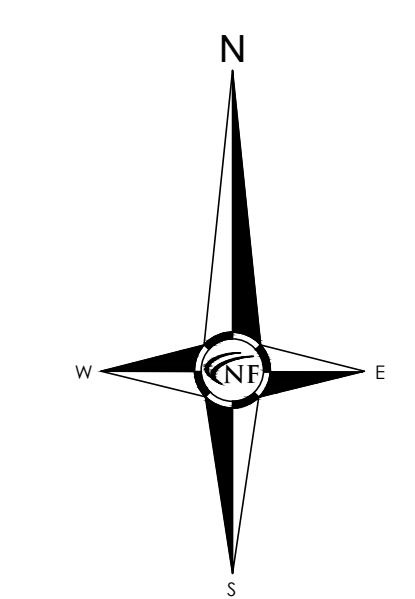
DATE:  
**January 9, 2024**

SCALE: 1" = 30'

NFE JOB NO. **K176-01** SHEET NO. **L1**



W:\GIS\2024\Tree\0000\FIELD\176-01\Office\landscapen.k176-01\_L1\_REV.dwg, 1/9/2025 8:46:04 AM



**LANDSCAPE REQUIREMENTS**

EXISTING SITE AREA: 90,529.37 S.F. OR 2.08 ACRES

**FRONTAGE LANDSCAPE (F)**  
 2 DECIDUOUS TREES, 4 ORNAMENTAL TREES AND 12 SHRUBS PER 100 LF.  
 MAPLEHILL: 172.98 LF.  
 REQUIRED: 4 DECIDUOUS TREES, 7 ORNAMENTAL TREES AND 21 SHRUBS  
 PROVIDED: 6 EXISTING TREES, 7 ORNAMENTAL TREES AND 26 SHRUBS, 30 GRASSES

**ORION COURT: 461.16 LF.**  
 REQUIRED: 9 DECIDUOUS TREES, 18 ORNAMENTAL TREES, AND 55 SHRUBS  
 PROVIDED: 7 DECIDUOUS TREES, 2 EXISTING, 18 ORNAMENTAL TREES, AND 60 SHRUBS

**BUFFER REQUIREMENT (B)**  
 TYPE 'C' SOUTH PROPERTY LINE: 197 LF.  
 2 DECIDUOUS TREES, 1.5 ORNAMENTAL TREES,  
 4 EVERGREEN TREES AND 6 SHRUBS PER 100 LF.  
 REQUIRED: 4 DECIDUOUS TREES, 3 ORNAMENTAL TREES, 8 EVERGREENS AND 12 SHRUBS  
 PROVIDED: PROPOSED 48" HT SCREEN/RETAINING WALL, 4 EXISTING TREES, 6 DECIDUOUS TREES AND 32 SHRUBS

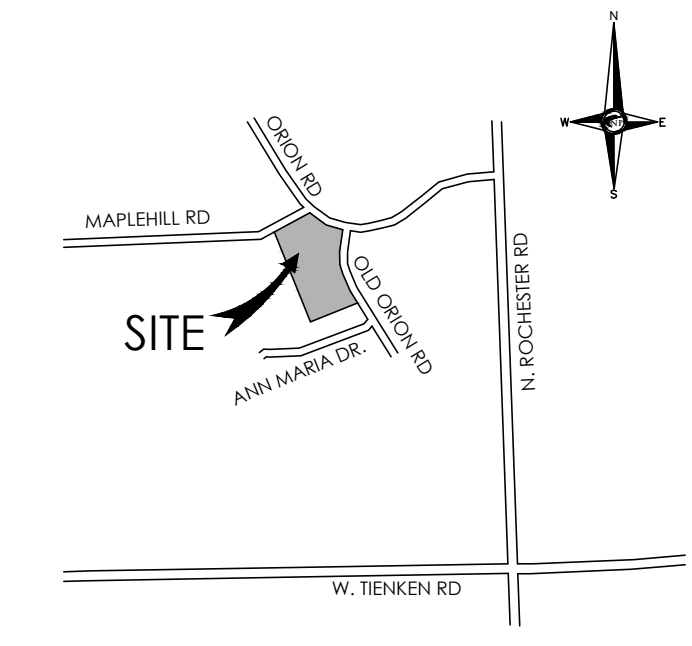
**TYPE 'C' WEST PROPERTY LINE: 320.18 LF.**  
 2 DECIDUOUS TREES, 1.5 ORNAMENTAL TREES,  
 4 EVERGREEN TREES AND 6 SHRUBS PER 100 LF.  
 REQUIRED: 6 DECIDUOUS TREES, 5 ORNAMENTAL TREES, 13 EVERGREENS AND 19 SHRUBS  
 PROVIDED: 7 EXISTING TREES, 13 EVERGREEN AND 5 ORNAMENTAL, 37 SHRUBS

**R.O.W. LANDSCAPE REQUIREMENTS (R)**  
 1 DECIDUOUS PER 35 LF. + ORNAMENTAL PER 60 LF.  
 MAPLEHILL: 200 LF.  
 200 LF. / 35 LF. = 5.7 OR 6 CANOPY TREES  
 200 LF. / 60 LF. = 3.33 OR 3 ORNAMENTAL TREES  
 PROVIDED: 6 CANOPY AND 3 ORNAMENTAL TREES PROVIDED ALONG PARKING ON-SITE DUE TO EXISTING DITCH AND UTILITIES

**ORION COURT: 461.16 LF.**  
 461.16 LF. / 35 LF. = 13.18 OR 13 CANOPY TREES  
 461.16 LF. / 60 LF. = 7.7 OR 8 ORNAMENTAL TREES  
 PROVIDED: 3 EXISTING TREES, 10 CANOPY TREES, 2 EXISTING ORNAMENTAL TREES, 6 ORNAMENTAL TREES

**PARKING INTERIOR LANDSCAPE (I)**  
 REQUIRED: 5% OF THE PARKING LOT SHALL BE LANDSCAPED WITH 1 TREE PER 150 S.F.  
 REQUIRED AREA: 23,640.48 S.F. X 5% = 1,182 S.F.  
 1,182 S.F. / 150 S.F. = 7.88 OR 8 TREES REQUIRED  
 PROVIDED: 8 TREES

**STORMWATER BASIN LANDSCAPE**  
 N/A WITH UNDERGROUND SYSTEM



**NOWAK & FRAUS ENGINEERS**  
 46777 WOODWARD AVE.  
 PONTIAC, MI 48342-5032  
 TEL. (248) 332-7931  
 FAX. (248) 332-8257

NOTE: ALL TREES LOCATED WITHIN THE R.O.W. WILL BE MAINTAINED BY THE CITY AFTER PLANTING BY THE DEVELOPER.

to clarify - new trees should be generally maintained (water/mulch) in this location by developer. However, long term trimming will be completed by City to address public safety, etc. being that they are on the ROW.



**NOTE:**  
 A PLANNING COMMISSION MODIFICATION IS REQUESTED FOR THE REQUIRED TYPE 'C' 20" WIDE BUFFER. THE BUFFER MODIFICATION IS REQUESTED TO ACCOMMODATE THE PROPOSED UNDERGROUND DETENTION SYSTEM AND REQUIRED PARKING. ON-SITE AND EXISTING GRADE DIFFERENTIALS IN THE BUFFER REQUIRE BUFFER. A RETAINING IS PROPOSED WHICH WILL EXTEND 4' HIGH ABOVE THE TOP OF CURB ELEVATION. IN ORDER TO SCREEN HEADLIGHTS, IN ADDITION, THE AREA WILL BE HEAVILY PLANTED WITH EVERGREEN TREES AND NARROW CANOPY TREES TO FURTHER SCREEN THE SITES FROM NEIGHBORING PROPERTIES.

**GENERAL SEED NOTE:**  
 ALL LAWN AREAS DESIGNATED TO BE SEED, SHALL BE HYDRO-SEEDING WITH SPECIFIED BLENDS, AND STABILIZED WITH WOOD CELLULOSE FIBER MULCH (2000 LB PER ACRE) - IN AREAS SUBJECT TO EROSION, SEEDING LAWN SHALL BE FURTHER STABILIZED WHERE NECESSARY WITH BIODEGRADABLE EROSION BLANKET AND STAKED UNTIL ESTABLISHED. ALL SEED SHALL BE APPLIED OVER A MINIMUM 3" PREPARED TOPSOIL, AND SHALL BE KEPT MOIST AND WATERED DAILY UNTIL ESTABLISHED.  
 SEEDING INSTALLATION SHALL OCCUR ONLY:  
 SPRING: APRIL 15 TO JUNE 1  
 FALL: AUGUST 15 TO OCTOBER 15

**PLANT SCHEDULE**

KEY	QTY	BOTANICAL/COMMON NAME	SIZE	SPACING	ROOT	COMMENT	UNIT /TOTAL COST
<b>TREES</b>							
AL	5	Amelanchier laniata Allegheny Serviceberry	4-8 HT	SEE PLAN	B&B	CLUMP FORM, 3 CANES	\$275/\$1,375
CO	12	Quercus coccinea Pringle's Sentinel	3" CAL	SEE PLAN	B&B	FULLY BRANCHED HEADS	\$325/\$3,900
CC	10	Quercus canadensis Forest Pansy	3" CAL	SEE PLAN	B&B	FULLY BRANCHED HEADS	\$325/\$3,250
CK	7	Cornus kousa Kousa Dogwood	2" CAL	SEE PLAN	B&B	FULLY BRANCHED HEADS	\$275/\$1,925
GR	7	Ginkgo biloba Princeton Sentry	3" CAL	SEE PLAN	B&B	FULLY BRANCHED HEADS	\$325/\$2,275
GT	2	Gleditsia triacanthos Street Keeper	3" CAL	SEE PLAN	B&B	FULLY BRANCHED HEADS	\$325/\$650
MS	3	Magnolia stellata Royal Star	2" CAL	SEE PLAN	B&B	FULLY BRANCHED HEADS	\$275/\$825
MA	18	Malus adriana Astronack Crabapple	2" CAL	SEE PLAN	B&B	FULLY BRANCHED HEADS	\$275/\$4,950
NS	8	Nyssa sylvatica Red Rope	3" CAL	SEE PLAN	B&B	FULLY BRANCHED HEADS	\$325/\$2,600
PG	7	Picea canadensis Black Hills Spruce	10' HT	SEE PLAN	B&B	FULLY BRANCHED HEADS	\$330/\$2,450
TD	6	Taxodium distichum Bald Cypress	3" CAL	SEE PLAN	B&B	FULLY BRANCHED HEADS	\$325/\$1,950
TA	8	Tilia americana McK/Sentry	3" CAL	SEE PLAN	B&B	FULLY BRANCHED HEADS	\$325/\$2,600
<b>SHRUBS</b>							
CS	18	Cornus sericea Arctic Fire	30" HT	30" OC	CONT		\$50/\$900
DL	98	Desmodium illinoense Michigan Sunset	5 GAL	30" OC	CONT		\$50/\$4,900
IG	157	Ilex glabra Strongbox	30" HT	30" OC	B&B		\$75/\$11,775
RK	48	Rosa double Knockout	5 GAL	30" OC	CONT		\$50/\$2,400
TO	16	Thuja occidentalis DeGroot's Spire	5' HT	4' OC	B&B		\$75/\$1,200
TP	48	Thuja x plicatum Green Giant	6-8 HT	5' OC	B&B		\$75/\$3,600
<b>GROUNDCOVERS/PERENNIALS</b>							
CA	36	Colostygia Karl Foerster	3 GAL	30" OC	CONT		\$30/\$1,080
HM	54	Hakonechloa macra Japanese Forest Grass	2 GAL	30" OC	CONT		\$30/\$1,620
HS	80	Hemerocallis Happy Returns	2 GAL	30" OC	CONT		\$15/\$1,200
<b>GROUNDCOVERS/PERENNIALS</b>							
SEED1	5,778	HYDROSEED AND MULCH	SF				\$423,212
SEED2	2,400	ECCO-TURF LOW MAINTENANCE SEED MIX	SF				\$65/\$156
IRR	1 LS	COMPLETE IRRIGATION SYSTEM, INSTALLED	LS				\$15,000
<b>TOTAL COST</b>							<b>\$95,693.00</b>

**ECO-TURF LOW MAINTENANCE FESCUE MIX:**

ALL LAWN AREAS DESIGNATED TO BE SEEDING SHALL BE DONE SO WITH LOW-GROW LAWN SEED MIX, AT A RATE OF 7 LBS/1,000 S.F. SEED AVAILABLE FROM:  
 MICHIGAN WILDFLOWER FARM  
 (7) 1-517-647-6010  
 \* MIX IS COMPRISED OF A MIX OF FIVE (5) FESCUE VARIETIES SUITABLE FOR SUN/SHADE

**IRRIGATION NOTE:**  
 ALL LANDSCAPE AREAS, INCLUDING THOSE WITHIN THE R.O.W. SHALL BE IRRIGATED WITH AN AUTOMATIC UNDERGROUND IRRIGATION SYSTEM. THE SYSTEM SHALL OPERATE IN COMPLIANCE WITH LOCAL STANDARDS AND SEASONAL RESTRICTIONS. SEPARATE ZONES SHALL BE PROVIDED FOR LAWN AREAS AND PLANTING BEDS. IRRIGATION SHALL BE DESIGNED IN THE MOST EFFICIENT MANNER NECESSARY TO FULLY IRRIGATE ALL PLANTING AREAS. OVERSPRAY ONTO CITY ROADS OR PATHWAYS IS PROHIBITED.

**KEY LEGEND**

- 1 TYPICAL SEED LAWN AREAS, SOWN ON 3" TOPSOIL
- 2 RESTORE DISTURBED AREAS W/ ECO-TURF LOW MAINTENANCE MIX
- 3 4" DIA SPADE CUT EDGE W/ 3" SHREDDED BARK MULCH
- 4 4" DEPTH DOUBLE SHREDDED HARDWOOD BARK MULCH
- 5 PUBLIC PLAZA W/ 24" SEATWALL AND BIKE REPAIR STATION
- 6 5' LONG GROUND MOUNT PARK BENCH, 4 TOTAL
- 7 RETAINING WALL W/ 36" WALL ABOVE PARKING LOT GRADE
- 8 SNOW PILING AREA TO BE COORDINATED WITH SNOW REMOVAL CONTRACTOR

**PROJECT**  
 Old Orion Court  
 Development

**CLIENT**  
 Mark Bismack  
 5319 23 Mile Road  
 Shelby Township, MI 48306

Care of:  
 Krieger Klatt Architects  
 Contact: Mr. Jeff Klatt, AIA  
 Phone: (248) 414-9270  
 Email: Jeff@kriegerklatt.com

**PROJECT LOCATION**  
 Part of the SE 1/4 of Section 3  
 T. 3N., R. 11E.  
 City of Rochester Hills,  
 Oakland County, Michigan

**SHEET**  
 Landscape Plan



**REVISIONS**  
 04/24/24 SPA  
 07/15/24 SPA  
 11/06/24 REVISED PER CITY  
 01/13/25 SPA REV #2

**DRAWN BY:**  
 G. Ostrowski

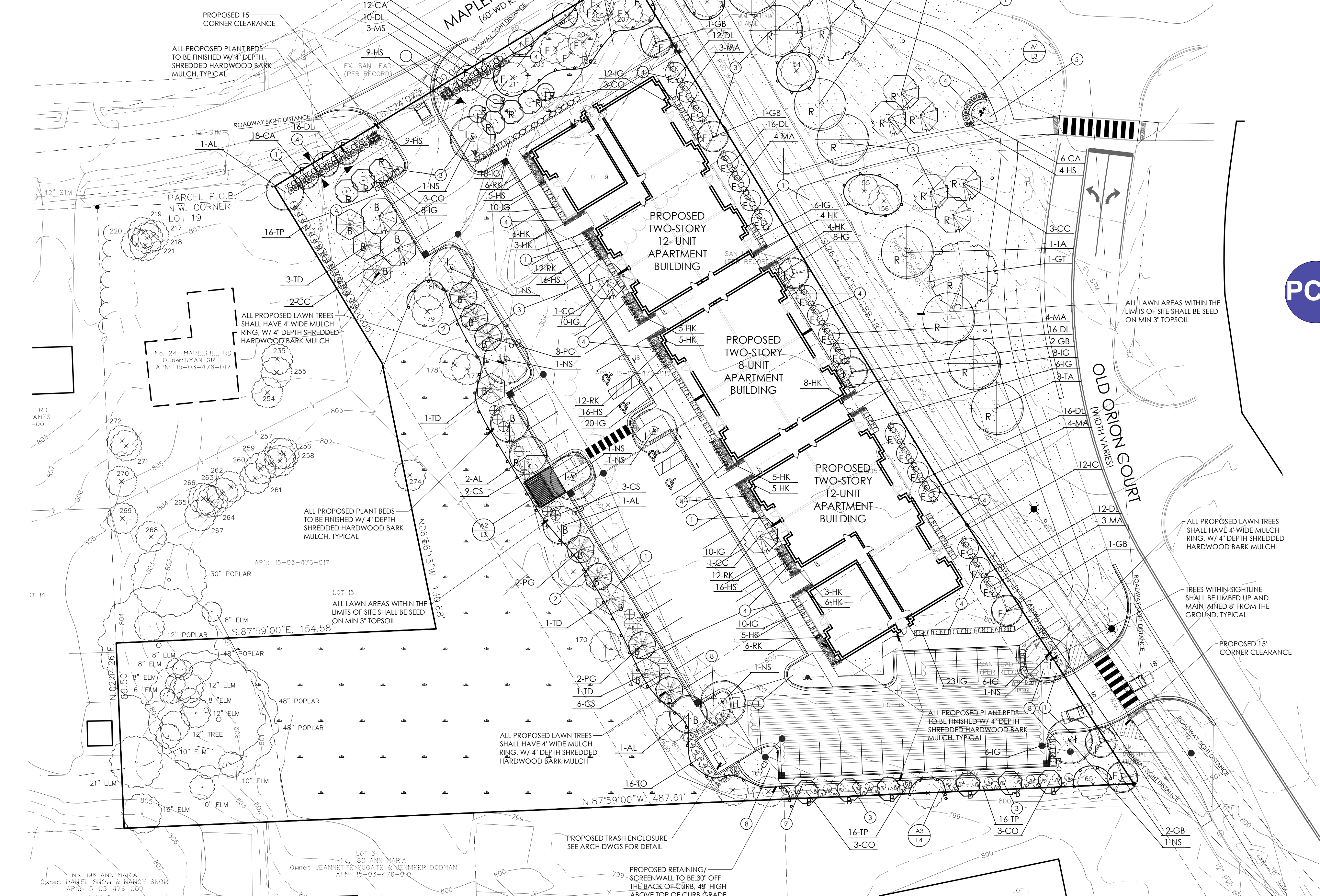
**DESIGNED BY:**  
 G. Ostrowski

**APPROVED BY:**  
 G. Ostrowski

**DATE:**  
 January 9, 2024

**SCALE:** 1" = 30'  
 30 15 0 15 30 45

**NFE JOB NO.** SHEET NO.  
**K176-01** **L2**



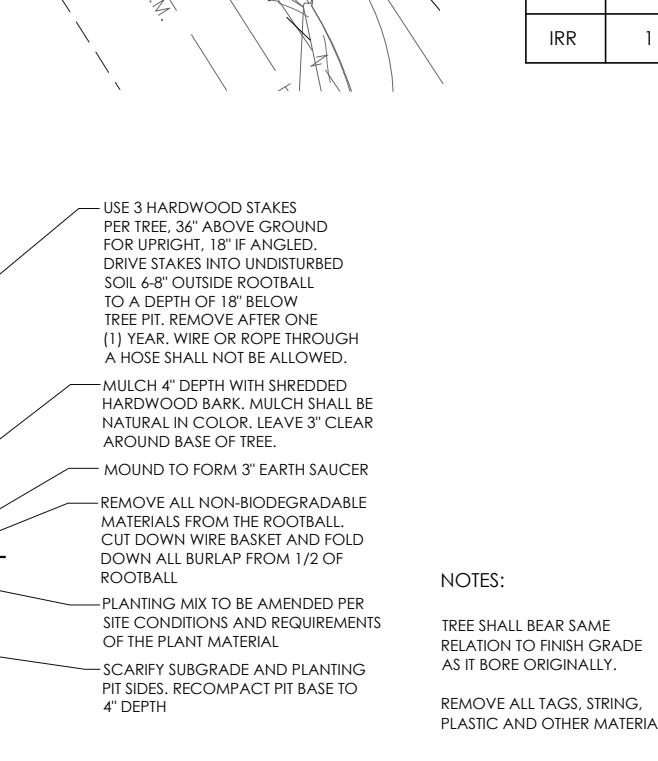
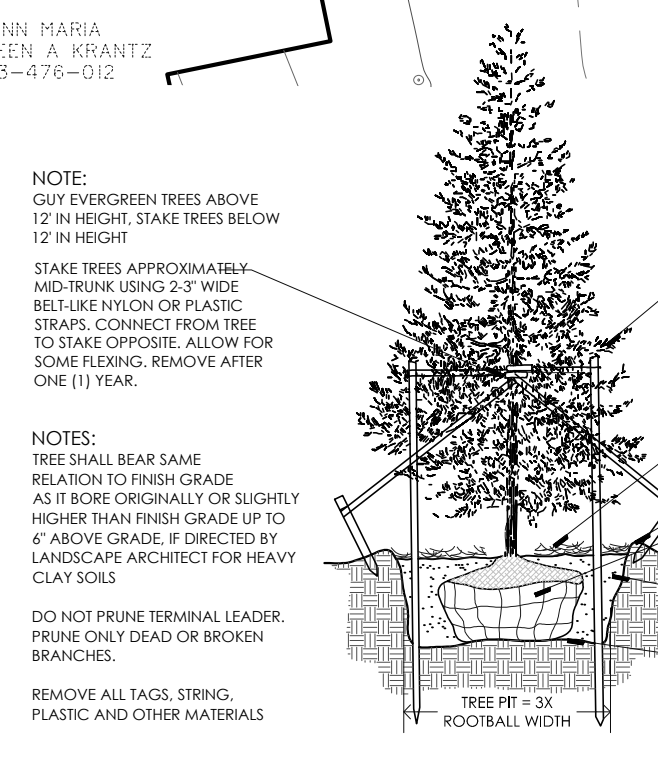
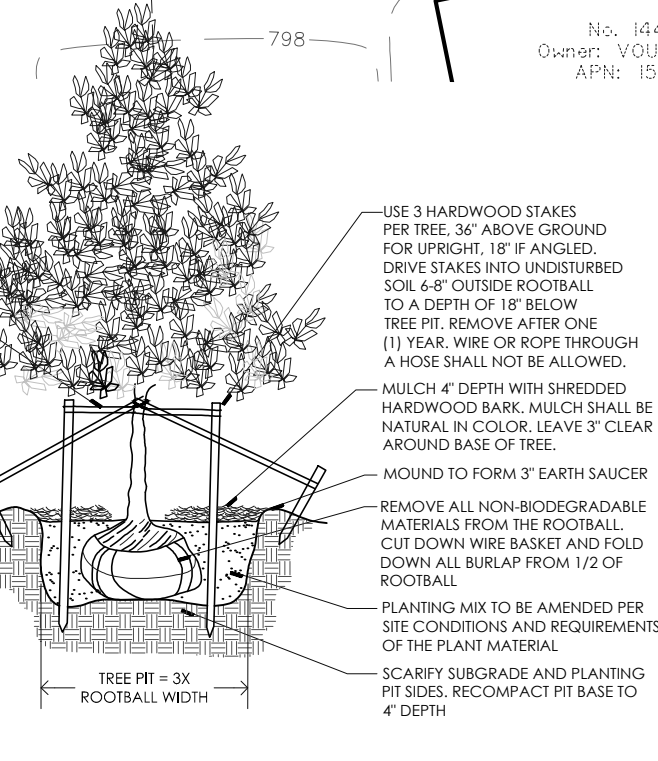
**NOTE:**  
 PRIOR APPROVAL IS REQUIRED TO PLANT ANY TREE OR SHRUB ON THE PUBLIC RIGHT-OF-WAY. ALL TREES AND SHRUBS MUST BE PLANTED AT LEAST 10' FROM THE EDGE OF THE PUBLIC ROAD. (TREES MUST BE PLANTED AT LEAST 15' AWAY FROM CURB OR ROAD EDGE WHERE THE SPEED IS MORE THAN 35 MPH.) SHADE TREES AND SHRUBS MUST BE PLANTED AT LEAST 5' FROM THE EDGE OF THE PUBLIC WALKWAY. EVERGREEN AND ORNAMENTAL TREES MUST BE PLANTED AT LEAST 10' FROM THE EDGE OF THE PUBLIC WALKWAY. NO TREES OR SHRUBS MAY BE PLANTED WITHIN THE TRIANGULAR AREA FORMED AT THE INTERSECTION OF ANY STREET RIGHT-OF-WAY LINES AT A DISTANCE ALONG EACH LINE OF 25' FROM THEIR POINT OF INTERSECTION. NO TREES OR SHRUBS MAY BE PLANTED IN THE TRIANGULAR AREA FORMED AT THE INTERSECTION OF ANY DRIVEWAY WITH A PUBLIC WALKWAY AT A DISTANCE ALONG EACH LINE OF 15' FROM THEIR POINT OF INTERSECTION. ALL TREES AND SHRUBS MUST BE PLANTED AT LEAST 15' AWAY FROM ANY FIRE HYDRANT. SHADE AND EVERGREEN TREES MUST BE AT LEAST 15' AWAY FROM THE NEAREST OVERHEAD WIRE. TREES MUST BE PLANTED A MINIMUM OF 5' FROM AN UNDERGROUND UTILITY, UNLESS THE CITY'S LANDSCAPE ARCHITECT REQUIRES A GREATER DISTANCE.

PRIOR TO THE RELEASE OF THE PERFORMANCE BOND, THE CITY OF ROCHESTER HILLS FORESTRY DIVISION NEEDS TO INSPECT ALL TREES, EXISTING OR PLANTED, TO IDENTIFY ANY THAT POSE A HAZARD TO THE SAFE USE OF THE PUBLIC RIGHT-OF-WAY. FORESTRY MAY REQUIRE THE DEVELOPER TO REMOVE, AND POSSIBLY REPLACE, ANY SUCH TREES.

THESE REQUIREMENTS ARE INCORPORATED INTO THE PLAN.

**CITY MAINTENANCE NOTES:**

1. LANDSCAPING SHALL BE KEPT IN A NEAT, ORDERLY AND HEALTHY GROWING CONDITION, FREE FROM DEBRIS AND REFUSE.
2. PRUNING SHALL BE MINIMAL AT THE TIME OF INSTALLATION, ONLY TO REMOVE DEAD AND DISEASED BRANCHES. SUBSEQUENT PRUNING SHALL ASSUME PROPER MAINTENANCE OF PLANTS TO ACHIEVE THEIR APPROVED PURPOSE.
3. ALL DEAD, DISEASED PLANT MATERIAL SHALL BE REMOVED IMMEDIATELY AND REPLACED WITHIN SIX (6) MONTHS AFTER IT DIES, OR IN THE NEXT PLANTING SEASON, WHOEVER OCCURS FIRST. FOR PURPOSES OF THIS SECTION, THE PLANTING SEASON FOR DECIDUOUS PLANTS SHALL BE BETWEEN MARCH 1 AND JUNE 1, PLANT MATERIAL INSTALLED TO REPLACE DEAD OR DISEASED MATERIAL SHALL BE AS CLOSE AS PRACTICAL TO THE SIZE OF THE MATERIAL IT IS INTENDED TO REPLACE. THE CITY MAY NOTIFY PROPERTY OWNERS OF THE NEED TO REPLACE DEAD, DAMAGED, OR DISEASED MATERIAL.
4. THE APPROVED LANDSCAPE PLAN SHALL BE CONSIDERED A PERMANENT RECORD AND INTEGRAL PART OF THE SITE PLAN APPROVAL, UNLESS OTHERWISE APPROVED IN ACCORDANCE WITH THE AFORESAID PROVISIONS. ANY REVISIONS TO, OR REMOVAL OF PLANT MATERIALS, NON-COMPLIANCE WITH THE MAINTENANCE REQUIREMENTS OF THIS SECTION 138-12.109 WILL PLACE THE PARCEL IN NON-COMPLIANCE WITH THE APPROVED LANDSCAPE PLAN AND BE A VIOLATION OF THIS ORDINANCE.
5. IF PROTECTED TREES ARE DAMAGED, A FINE SHALL BE ISSUED ON AN INCH-BY-INCH BASIS AT A MONETARY RATE AS DEFINED BY THE FORESTRY DEPARTMENT.



DECIDUOUS TREE PLANTING DETAIL

EVERGREEN TREE PLANTING DETAIL

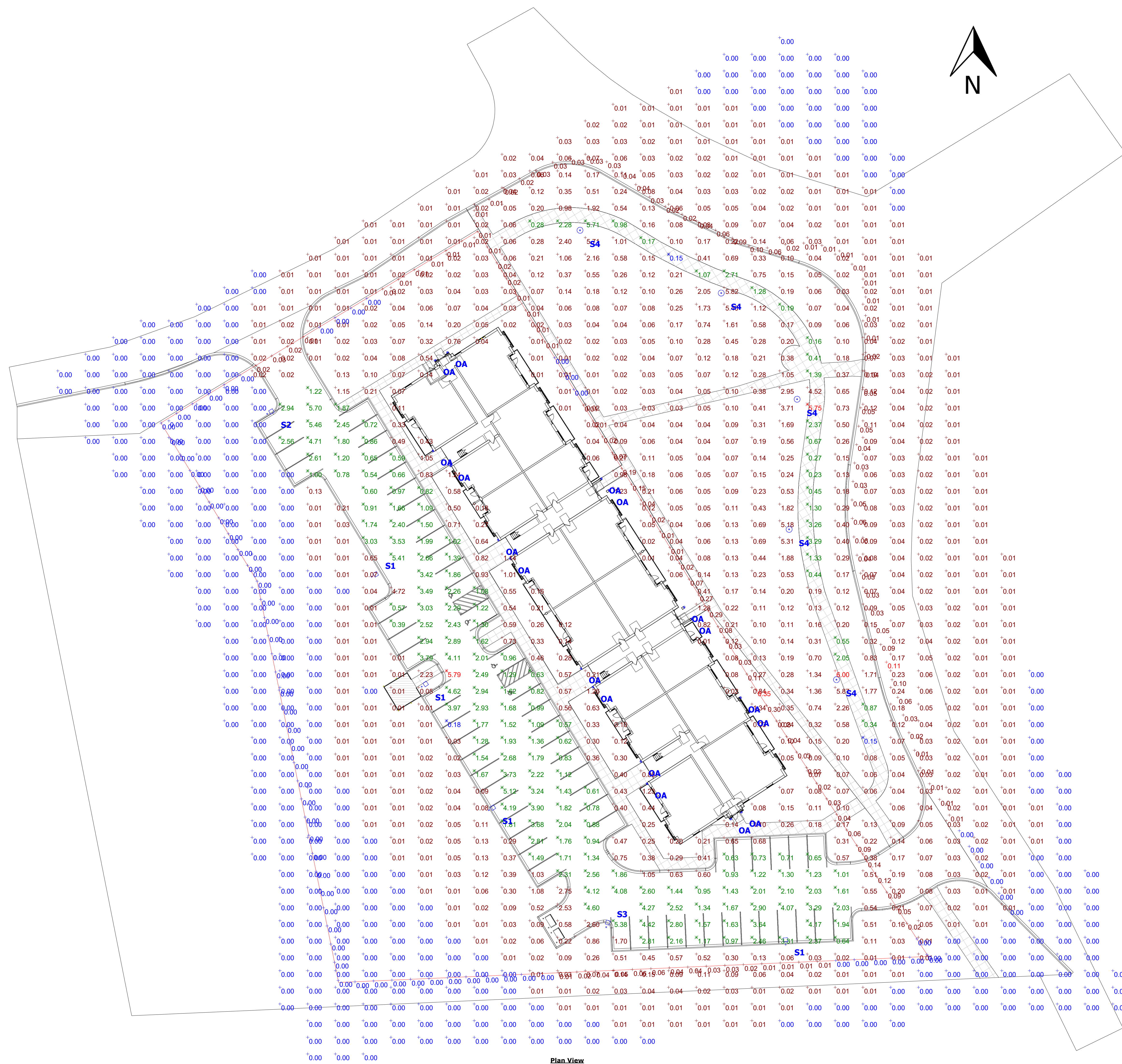
UPRIGHT EVERGREEN SHRUB PLANTING DETAIL



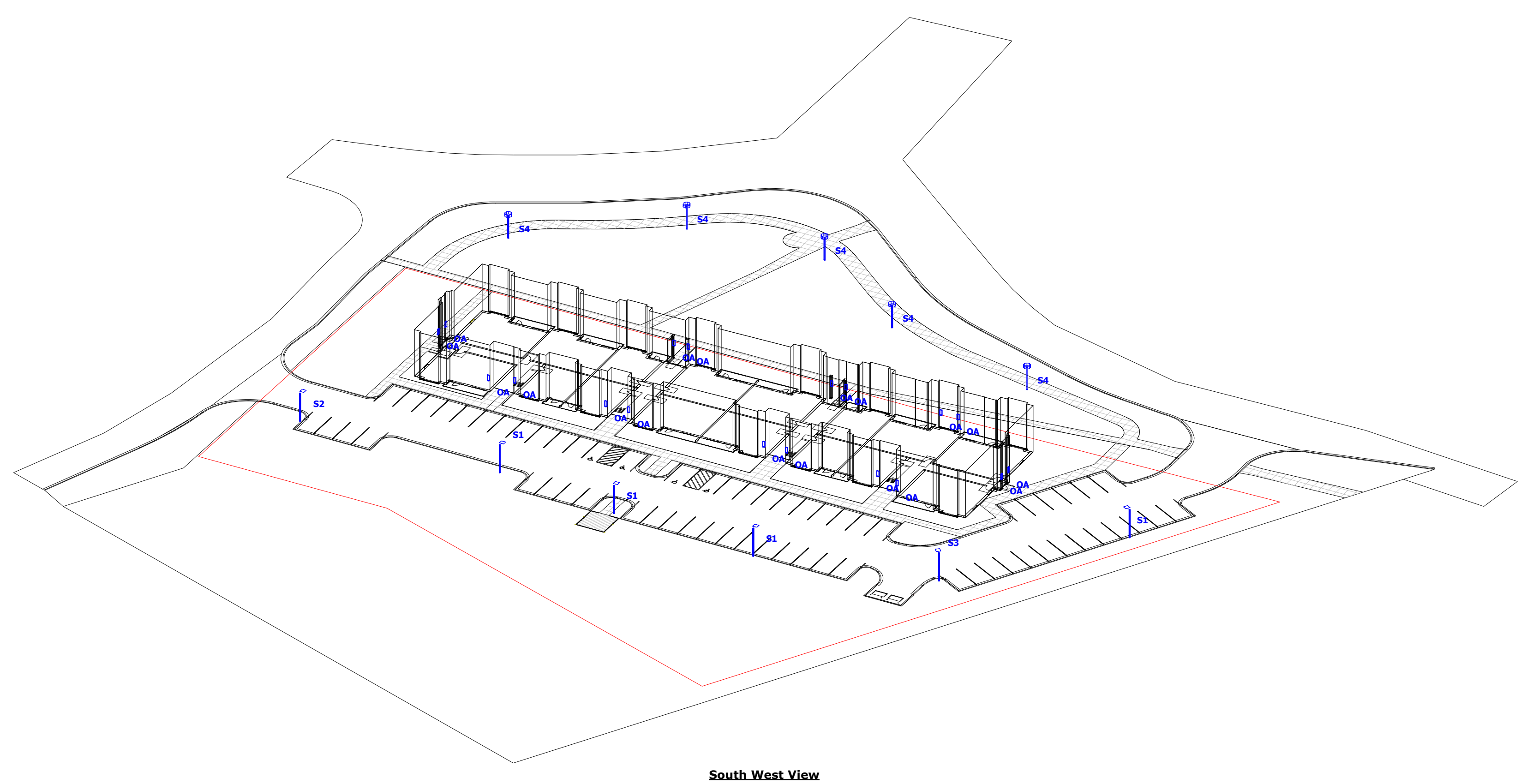








Plan View  
Scale: 1" = 25'



South West View

**D-Series Size 1 LED Area Luminaire**

**Specifications**

Length: 30" (762mm)  
Width: 16.5" (419mm)  
Height: 2.5" (63.5mm)

**Ordering Information**

Symbol	Description	Quantity	Manufacturer	Notes
OA	Aluminum housing, frosted lens enclosure, 3000K	18	Brownlee Lighting Inc	
S1	D-Series Size 1 Area Luminaire Performance Package 3000K CCT 70 CRI	4	Lithonia Lighting	
S2	D-Series Size 1 Area Luminaire Performance Package 3000K CCT 70 CRI	1	Lithonia Lighting	
S3	D-Series Size 1 Area Luminaire Performance Package 3000K CCT 70 CRI	1	Lithonia Lighting	
S4	POST TOP Pedestrian, 3000K, From City Gateway and Streetscape Master Plan.	5	FORMS AND SURFACES	

**Forms + Surfaces**

**Introduction**

The modern styling of the D-Series luminaire is a highly refined aesthetic that blends seamlessly with environments. The D-Series offers the benefits of the latest in LED technology into a high performance, high efficacy lighting luminaire.

The photometric performance results in close with excellent uniformity, greater pole spacing and lower power density. D-Series outdoor lighting luminaire aids in reducing the number of poles required in most lighting applications with typical energy savings of 25% and expected service life of over 100,000 hours.

**INSTALLATION & MAINTENANCE**

**INSTALLATION**

- Use a minimum of 2" diameter stainless steel anchor bolts with a minimum of 2" embedment.
- Use a minimum of 2" diameter stainless steel anchor bolts with a minimum of 2" embedment.
- Use a minimum of 2" diameter stainless steel anchor bolts with a minimum of 2" embedment.

**MAINTENANCE**

- Use a minimum of 2" diameter stainless steel anchor bolts with a minimum of 2" embedment.
- Use a minimum of 2" diameter stainless steel anchor bolts with a minimum of 2" embedment.
- Use a minimum of 2" diameter stainless steel anchor bolts with a minimum of 2" embedment.

**CAPSULE-SQ**

**7115 LED**

CAPSULE-SQ is a well location-rated recessed surface offered in two sizes. While providing the superior lighting performance, it also meets the most demanding aesthetic expectations such as elevator shafts, hallways, and meeting rooms. Heavy duty aluminum housing, stainless steel hardware, enclosed 100-277V LED components, all packaged in CAPSULE-SQ is available in two beam spread options: round (model # 7115) and square (model # 7115).

**FINISHES**

White, Black, Bronze, Silver, Gold, Copper, Nickel, Chrome, Stainless Steel, Powder Coat, Custom Color.

### Statistics

Description	Symbol	Avg	Max	Min	Max/Min	Avg/Min
Overall	+	0.39 fc	6.00 fc	0.00 fc	N/A	N/A
Parking Area	X	2.11 fc	5.79 fc	0.18 fc	32.2:1	11.7:1
Property Line	+	0.03 fc	0.35 fc	0.00 fc	N/A	N/A
Roadway Boundary	+	0.03 fc	0.11 fc	0.00 fc	N/A	N/A
Sidewalk	X	1.38 fc	5.75 fc	0.15 fc	38.3:1	9.2:1

### Schedule

Symbol	Label	QTY	Manufacturer	Catalog	Description	LLF	Mounting Height
OA	OA	18	Brownlee Lighting Inc	7115-15-H08-30K	Aluminum housing, frosted lens enclosure, 3000K	0.9	6'
S1	S1	4	Lithonia Lighting	DSX1 LED 30K 70CRI	D-Series Size 1 Area Luminaire Performance Package 3000K CCT 70 CRI	0.9	15'
S2	S2	1	Lithonia Lighting	DSX1 LED 30K 70CRI	D-Series Size 1 Area Luminaire Performance Package 3000K CCT 70 CRI	0.9	15'
S3	S3	1	Lithonia Lighting	DSX1 LED 30K 70CRI	D-Series Size 1 Area Luminaire Performance Package 3000K CCT 70 CRI	0.9	15'
S4	S4	5	FORMS AND SURFACES	CRT2011160915-001,	POST TOP Pedestrian, 3000K, From City Gateway and Streetscape Master Plan.	0.9	12'

- General Note**
- SEE SCHEDULE FOR LUMINAIRE MOUNTING HEIGHT.
  - SEE LUMINAIRE SCHEDULE FOR LIGHT LOSS FACTOR.
  - CALCULATIONS ARE SHOWN IN FOOTCANDLES AT: 0' - 0" & 5' - 0"

THE ENGINEER AND/OR ARCHITECT MUST DETERMINE APPLICABILITY OF THE LAYOUT TO EXISTING / FUTURE FIELD CONDITIONS. THIS LIGHTING LAYOUT REPRESENTS ILLUMINATION LEVELS CALCULATED FROM LABORATORY DATA TAKEN UNDER CONTROLLED CONDITIONS IN ACCORDANCE WITH ILLUMINATING ENGINEERING SOCIETY APPROVED METHODS. ACTUAL PERFORMANCE OF ANY MANUFACTURER'S LUMINAIRE MAY VARY DUE TO VARIATION IN ELECTRICAL VOLTAGE, TOLERANCE IN LAMPS, AND OTHER VARIABLE FIELD CONDITIONS. MOUNTING HEIGHTS INDICATED ARE FROM GRADE AND/OR FLOOR UP.

THESE LIGHTING CALCULATIONS ARE NOT A SUBSTITUTE FOR INDEPENDENT ENGINEERING ANALYSIS OF LIGHTING SYSTEM SUITABILITY AND SAFETY. THE ENGINEER AND/OR ARCHITECT IS RESPONSIBLE TO REVIEW FOR MICHIGAN ENERGY CODE AND LIGHTING QUALITY COMPLIANCE.

UNLESS EXEMPT, PROJECT MUST COMPLY WITH LIGHTING CONTROLS REQUIREMENTS DEFINED IN ASHRAE 90.1 2013. FOR SPECIFIC INFORMATION CONTACT GBA CONTROLS GROUP AT ASG@GASSERBUSH.COM OR 734-266-6705.

**Alternates Note**  
THE USE OF FIXTURE ALTERNATES MUST BE RESUBMITTED TO THE CITY FOR APPROVAL.

**Ordering Note**  
FOR INQUIRIES CONTACT GASSER BUSH AT QUOTES@GASSERBUSH.COM OR 734-266-6705.

**Drawing Note**  
THIS DRAWING WAS GENERATED FROM AN ELECTRONIC IMAGE FOR ESTIMATION PURPOSE ONLY. LAYOUT TO BE VERIFIED IN FIELD BY OTHERS.

**Mounting Height Note**  
MOUNTING HEIGHT IS MEASURED FROM GRADE TO FACE OF FIXTURE. POLE HEIGHT SHOULD BE CALCULATED AS THE MOUNTING HEIGHT LESS BASE HEIGHT.







