

# 1406 AVON

## EGL RESTORATION & REMEDIATION GRANT



Site

### Site

- South side of Avon, north of Walton
- Former Highland Park Woodfill

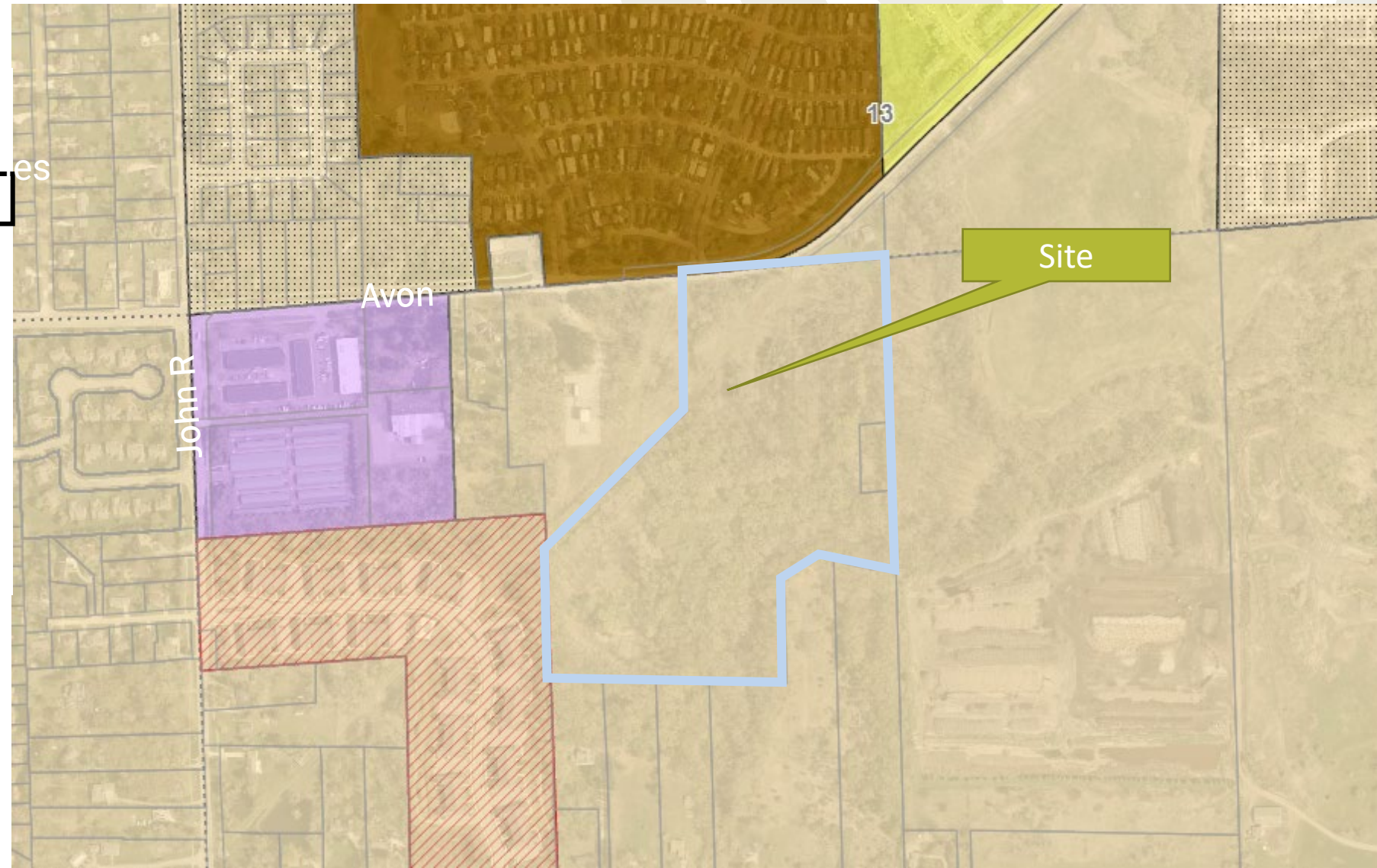
### Applicant

- United Tech Construction, LLC

# 1406 AVON

## EGL RESTORATION & REMEDIATION GRANT

- R-1 One-Family Residential District
- R-2 One-Family Residential District
- R-3 One-Family Residential District**
- R-4 One-Family Residential District
- RCD One-Family Residential Cluster District
- RM-1 Multiple-Family Residential District
- RMH Manufactured Housing Park District
- I Industrial District
- MR Mixed Residential Overlay District
- PUD Overlay

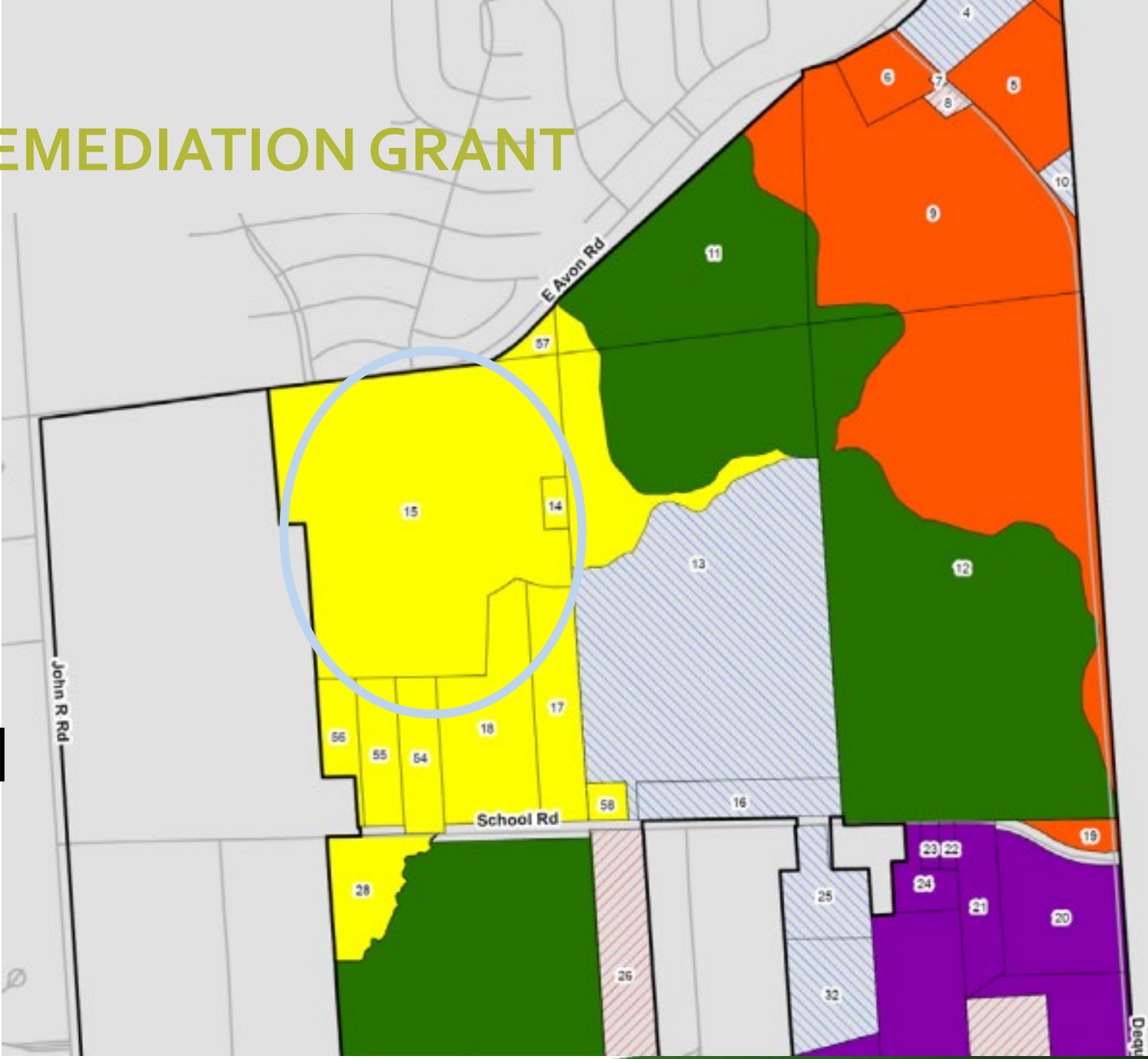


# 1406 AVON

## EGL RESTORATION & REMEDIATION GRANT

### Legend

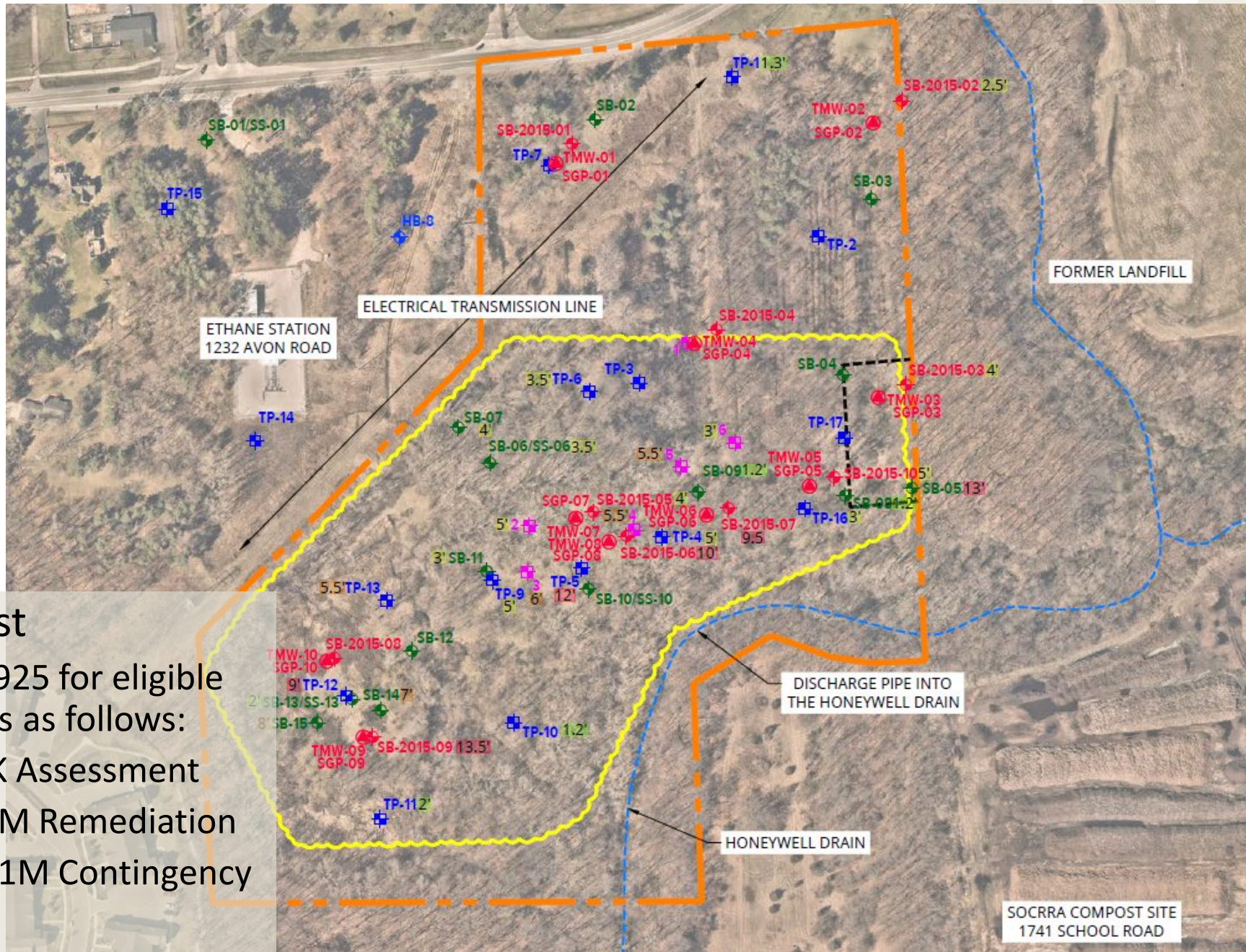
- Selected Parcels
- Study Area
- Roads
- Continued Use
- None
- Industrial/Commercial
- Mixed
- Open Space & Passive Recreation
- Residential



Environmental Concerns Inventory for the Rochester Hills Landfill Planning Area (2010)



# 1406 AVON EGLE RESTORATION & REMEDIATION GRANT



**LEGEND**

- - - - - APPROXIMATE PROJECT SITE BOUNDARY
- - - - - APPROXIMATE PARCEL BOUNDARY
- ~~~~~ APPROXIMATE REMEDIAL EXCAVATION AREA
- ⊕ APPROXIMATE HAND AUGER SOIL BORING LOCATION (McDOWELL, 2004)
- ⊕ APPROXIMATE TEST PIT LOCATION (McDOWELL, 2004)
- ⊕ APPROXIMATE SOIL BORING/SOIL, SURFACE WATER OR SEDIMENT SAMPLE LOCATION (MDEQ, 2011)
- ⊕ APPROXIMATE SOIL BORING/SOIL, SURFACE WATER, OR SEDIMENT, SAMPLE LOCATION (MDEQ, 2015)
- ⊕ APPROXIMATE TEMPORARY GROUNDWATER MONITORING/SOIL GAS WELL LOCATION (MDEQ, 2015)
- ⊕ APPROXIMATE TEST PIT LOCATION (McDOWELL, 2022)

**APPROXIMATE FILL DEPTHS**

- 0' TO 2' BELOW GROUND SURFACE
- 3' TO 5' BELOW GROUND SURFACE
- 6' TO 8' BELOW GROUND SURFACE
- 9' TO 13.5' BELOW GROUND SURFACE

**Request**  
 \$9,739,925 for eligible activities as follows:

- \$179K Assessment
- \$8.29M Remediation
- \$1.271M Contingency