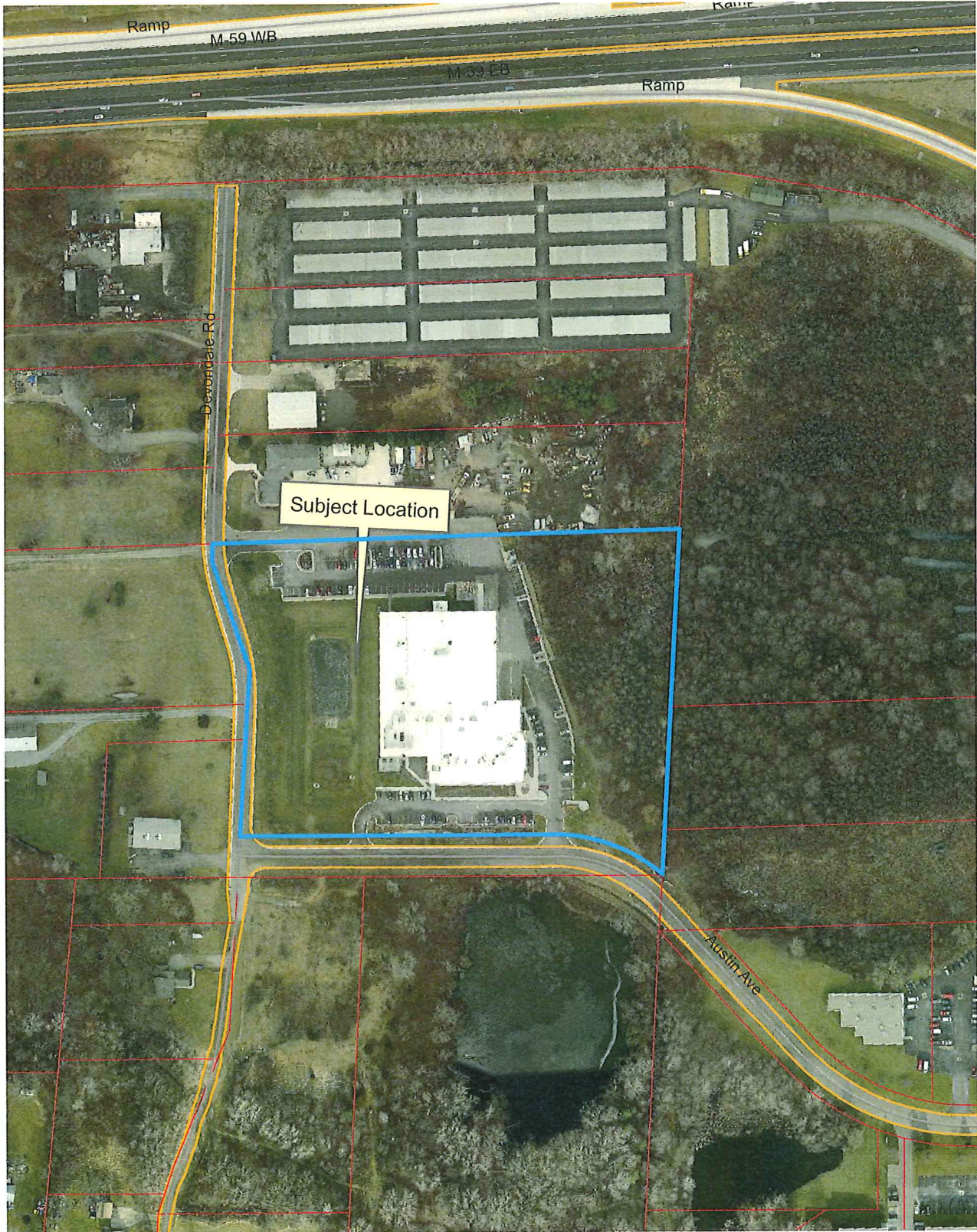


Location Map Rayconnect Addition 2014



Legend	
	Tax Parcel Boundary
	Subject Location
	Rayconnect Addition
	PCAs
	Red Line 1
	Green Line 2
	Blue Line 3

Aerial photographs as of April 2010.
 Tax Parcel lines were obtained on 7/1/13 from Oakland County.
 Although the information provided by this map is believed to be reliable, its accuracy is not warranted in any way. The City of Rochester Hills assumes no liability for any claims arising from the use of this map.

7-1-13

1 inch = 250 feet