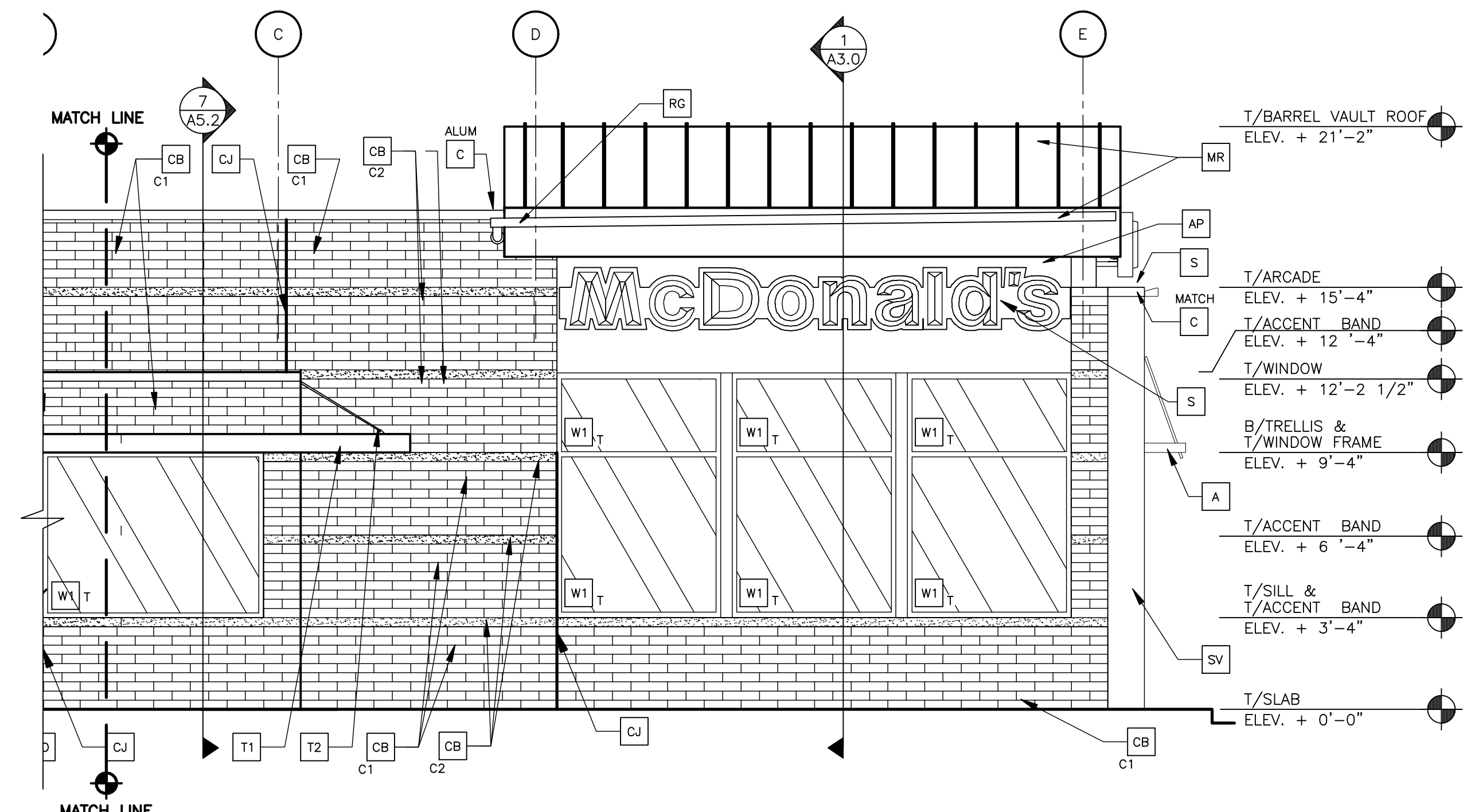
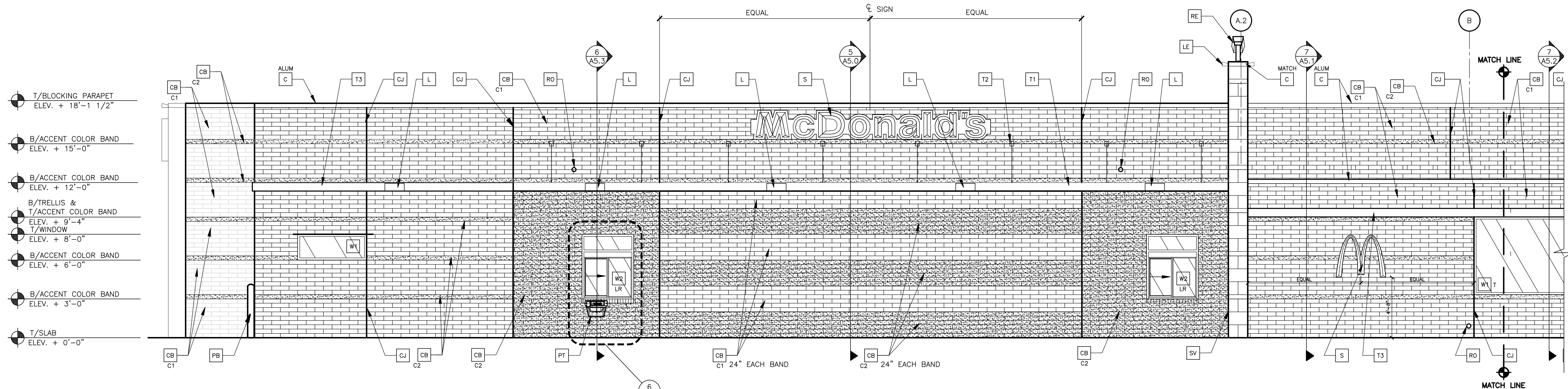


1 FRONT ELEVATION
A2.0 1/4" = 1'-0"



2 DRIVE-THRU ELEVATION
A2.0 1/4" = 1'-0"

(SEE ELEVATION 3/A2.0 FOR CONTINUATION OF ELEVATION)



3 DRIVE-THRU ELEVATION
A2.0 1/4" = 1'-0"

(SEE ELEVATION 2/A2.0 FOR CONTINUATION OF ELEVATION)

KEY NOTES:

- | | | | | | |
|--|--|---|---|--|--|
| <p>A METAL AWNING - UNDER SEPARATE PERMIT, COLOR TO BE ALTERNATING STRIPES TO MATCH PANTONE 123C AND 109C</p> <p>AP ALUMINUM PANEL SYSTEM - COLOR TO MATCH BENJAMIN MOORE 2125-30 GRAY SHOWER</p> <p>CB CONCRETE BRICK, TYPE- BELLA BRIK CONTACT: CONSUMERS CONCRETE PRODUCTS (616-243-3651) COLOR:
C1 = OLYMPIA BLEND TEXTURE, SMOOTH FACE
C2 = MIDLAND, SMOOTH FACE</p> | <p>C METAL COPING - COLOR = ALUMINUM ALUM</p> <p>C METAL COPING - COLOR TO MATCH SURROUNDING MATERIAL MATCH</p> <p>CJ CONTROL JOINT, SEE DETAIL 7/A4.1</p> <p>D HOLLOW METAL DOOR - PAINT TO MATCH COLOR OF SURROUNDING MATERIAL</p> | <p>FB CO2 FILL BOX (EQPM SCHEDULE ITEM 49.00) C02</p> <p>FB OPTIONAL BULK OIL FILL BOX (EQPM SCHEDULE ITEM 700.18) - CONFIRM USE WITH MCD PROJECT MANAGER B0</p> <p>L LIGHT FIXTURE (WALL SCONCE) - SEE ELECTRICAL</p> <p>LE UP & DOWN LED LIGHTING - SEE ELECTRICAL</p> <p>ML METAL LETTERING - BY OTHERS</p> | <p>MR METAL ROOF - STANDING SEAM W/ALUMINUM FINISH FASCIA TRIM, COLOR TO BE "YELLOW - PANTONE COLOR #109U"</p> <p>PB PIPE BOLLARD - PAINTED YELLOW</p> <p>PT (RMHC) COIN COLLECTOR</p> <p>RE ROOF CAP ELEMENT BY OTHERS</p> <p>RG CONTINUOUS RAIN GUTTERS AND DOWNSPOUTS AT BARREL VAULT ROOF G.C. TO COORDINATE THRU-WALL SLEEVE - SEE SECTIONS</p> | <p>RO ROOF DRAIN OVERFLOW PIPE PAINT TO MATCH SURROUNDING MATERIAL</p> <p>S McDONALD'S SIGNAGE BY OTHERS - UNDER SEPARATE PERMIT.</p> <p>SV STONE VENEER- TYPE: ROCKCAST ST003, COLOR: BUFFSTONE, TEXTURE: SMOOTH, SIZE: 4"x12"x24" NOM. ACCENT STRIPE- TYPE: ROCKCAST ST204, COLOR: BUFFSTONE, TEXTURE: CHISELED, SIZE: 4"x4"x24" NOM.</p> <p>T1 ALUMINUM TRELLIS</p> <p>T2 TRELLIS TIE-BACK</p> | <p>RO ROOF DRAIN OVERFLOW PIPE PAINT TO MATCH SURROUNDING MATERIAL</p> <p>T3 2XB WALL FASCIA - REFER TO SIM. DETAIL 3 ON SHEET A5.1</p> <p>W1 EXTERIOR WINDOW ASSEMBLY - SEE A5.0
T = TEMPERED GLASS</p> <p>W2 DRIVE-THRU WINDOW BY READY ACCESS CONFIRM MODEL, OPTIONS, AND SIZE WITH MCD AREA CONSTRUCTION MANAGER OPTIONS INCLUDE: WOOD BEARING WALLS W/4" BELLA BRICK EXTERIOR FINISH WOOD ROOF TRUSS FRAMING EXTERIOR FINISH ARCADE/ENTRY</p> <p>SLIDE DIRECTION: RL = RIGHT TO LEFT LR = LEFT TO RIGHT</p> |
|--|--|---|---|--|--|

GLAZING REQUIREMENTS:
U VALUE = 0.45
SHGC = 0.4

DRAWN BY		DATE		REV		DATE		DESCRIPTION	
RAM		MARCH 2009							
STD ISSUE DATE		MARCH 2009							
REVIEWED BY		MR							
DATE ISSUED		MAR 7, 2011							
SITE ADDRESS		808 ROCHESTER RD, ROCHESTER HILLS, MI 48307							
TITLE		2009 STANDARD BUILDING							
DESCRIPTION		3810 TRIP - WOOD/WOOD +5R +5F							
SHEET NO.		A2.0							
ELEVATIONS									

PREPARED FOR:
McDonald's USA, LLC
These drawings and specifications are the confidential and proprietary property of McDonald's USA, LLC and shall not be copied or reproduced without the written authorization of McDonald's USA, LLC. We warrant that these drawings were prepared for use on this particular site in accordance with the site plan and are not suitable for use on a different site or at a later time. Use of these drawings for reference or example on another project requires the contract documents for reuse on another project is not authorized.