



innovative *by* nature

Green Space
Advisory Board

City of Rochester Hills Green Space Advisory Board

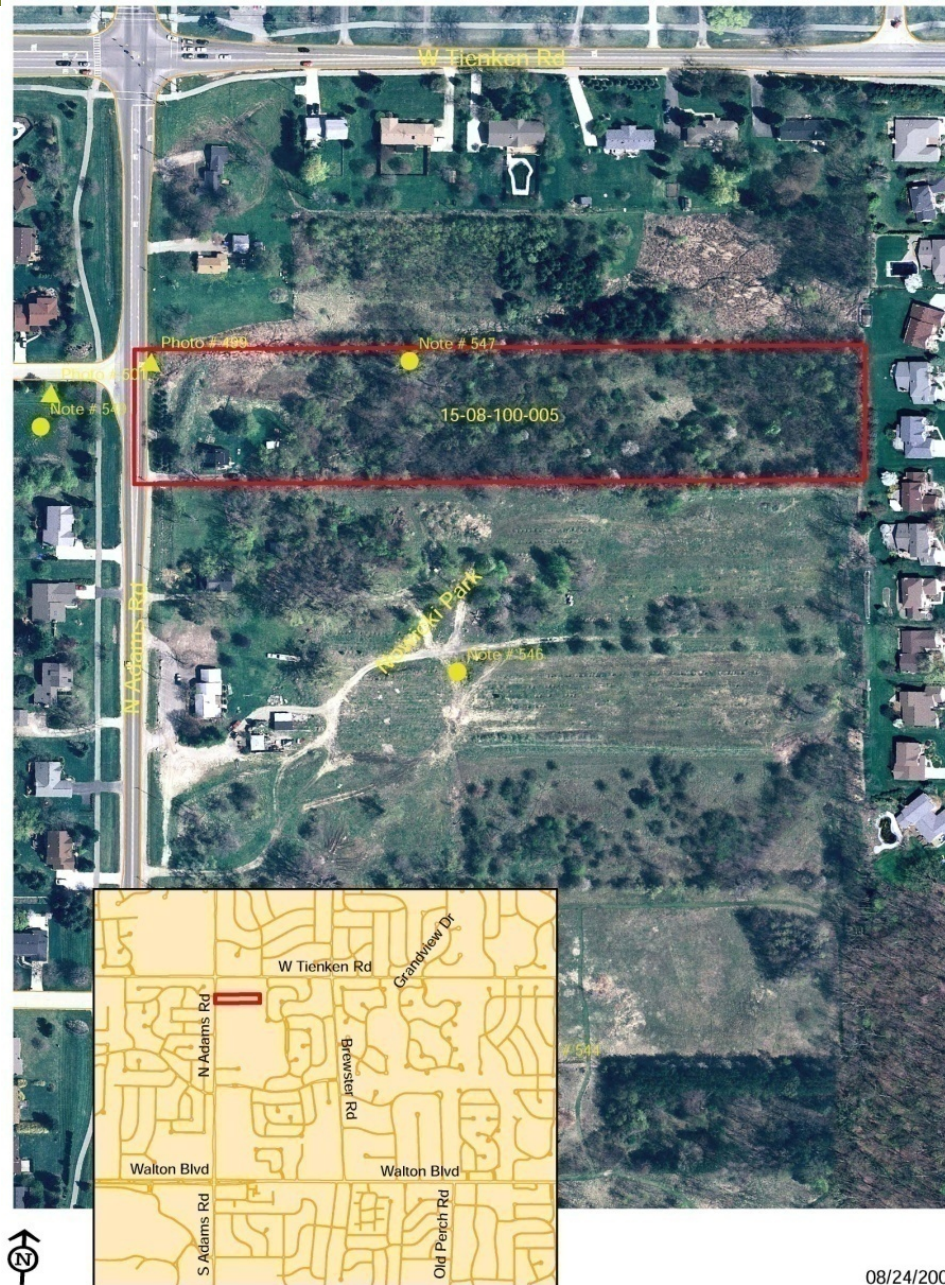
Review of Properties Nominated for Acquisition

March 24, 2015

Clinton River Valley 2 15-15-404-002

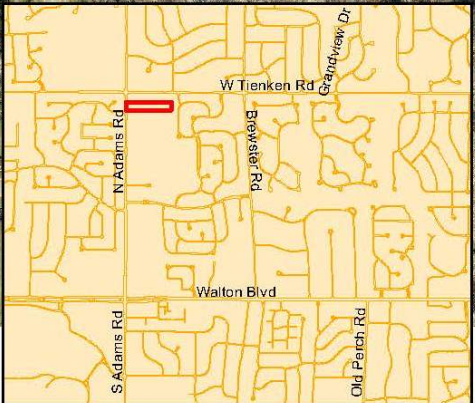
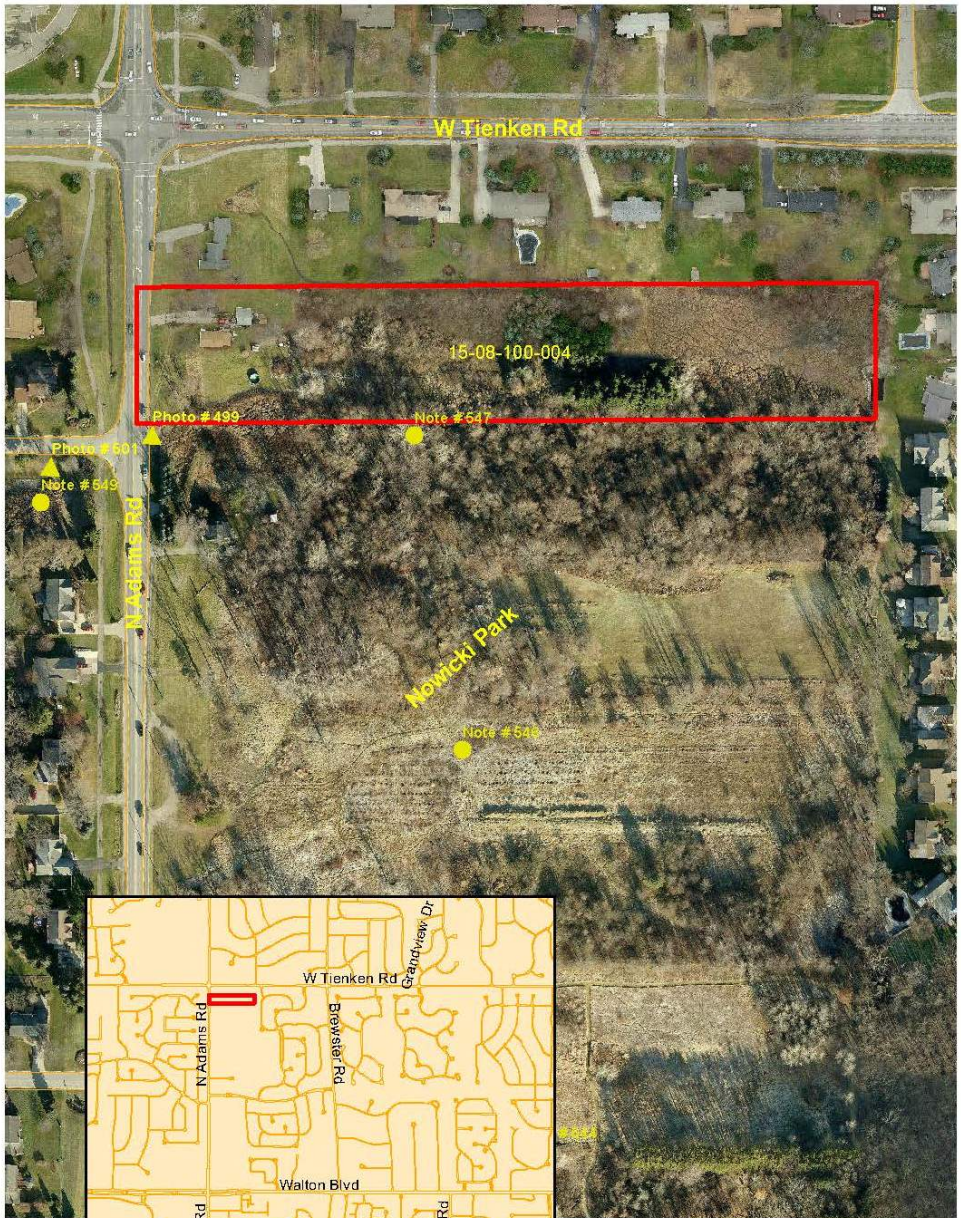


884 Adams Road 15-08-100-005



08/24/2006

950 Adams Road 15-08-100-004

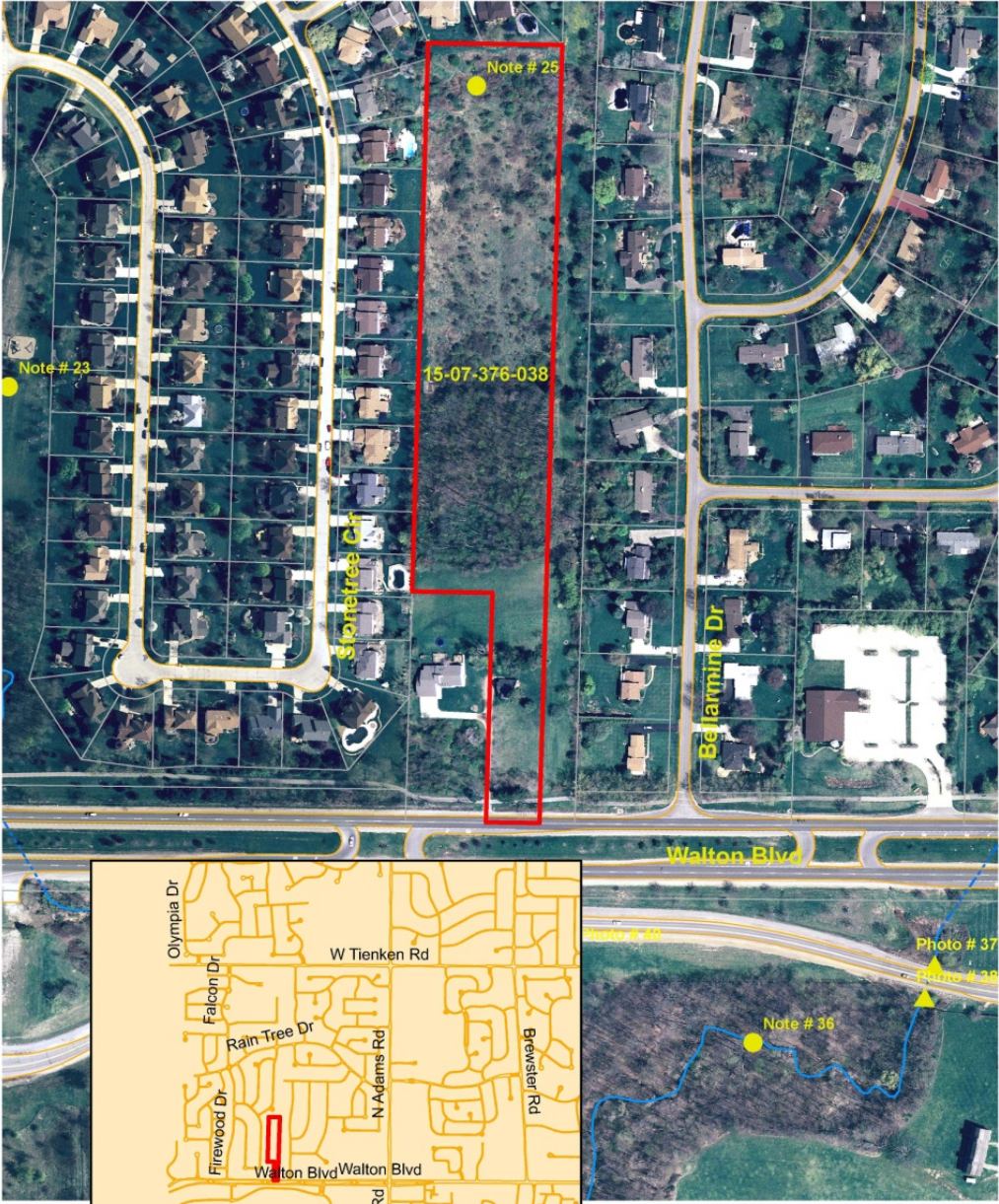


Published
by MIS Dept.
08/27/2012

Devondale Road 15-29-452-019



Walton Blvd. 15-07-376-038 (Karas prop.)



South Blvd. 15-31-400-018 (adj. Pine Trace GC)

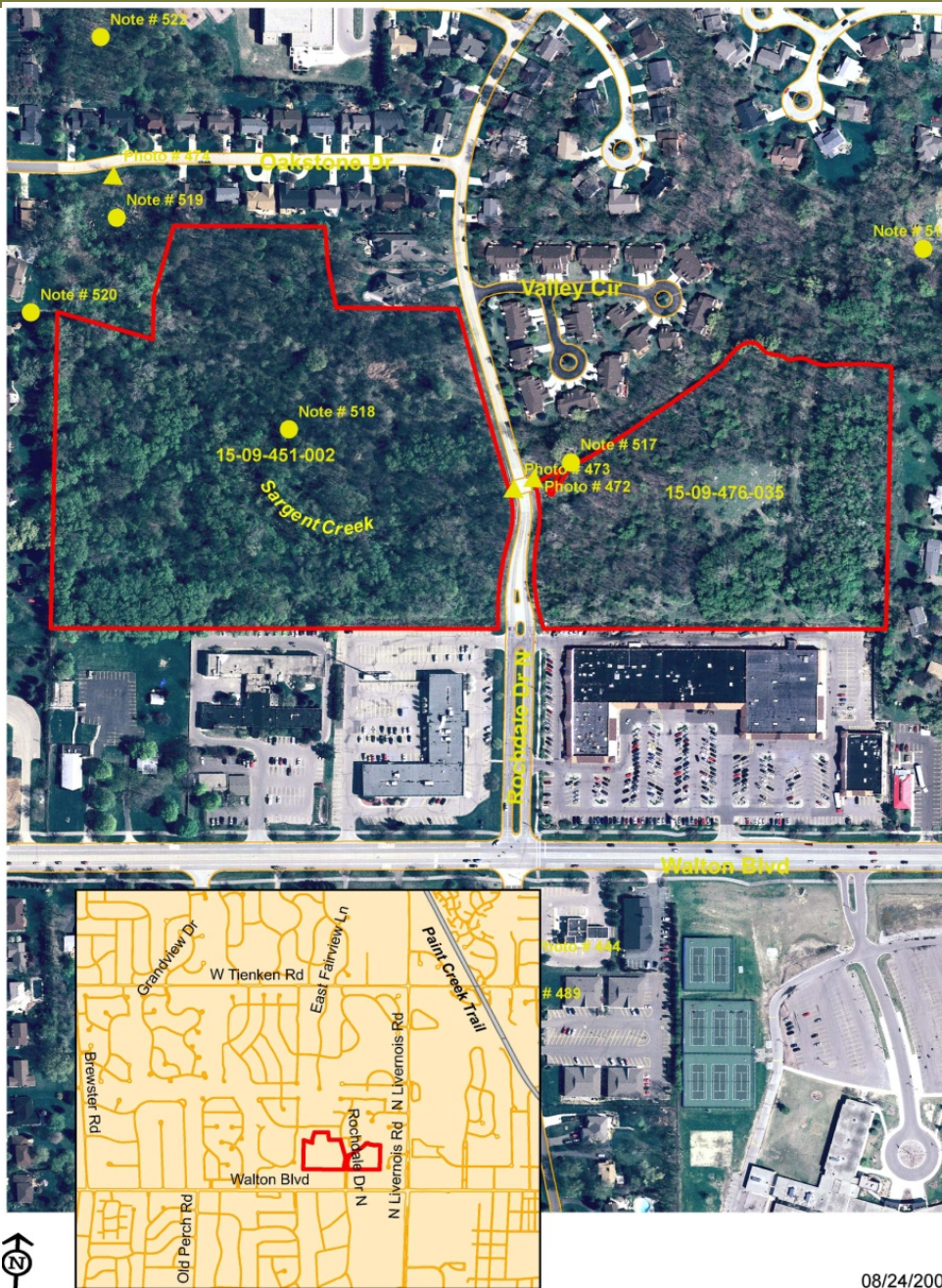


Meldon Lane 15-21-302-007 (Fox prop.)



08/24/2006

Rochdale W15-09-415-002 E 15-09-476-055



Maple Hill 15-03-326-019 (adj. Cliffview Apts.)



01/12/2010

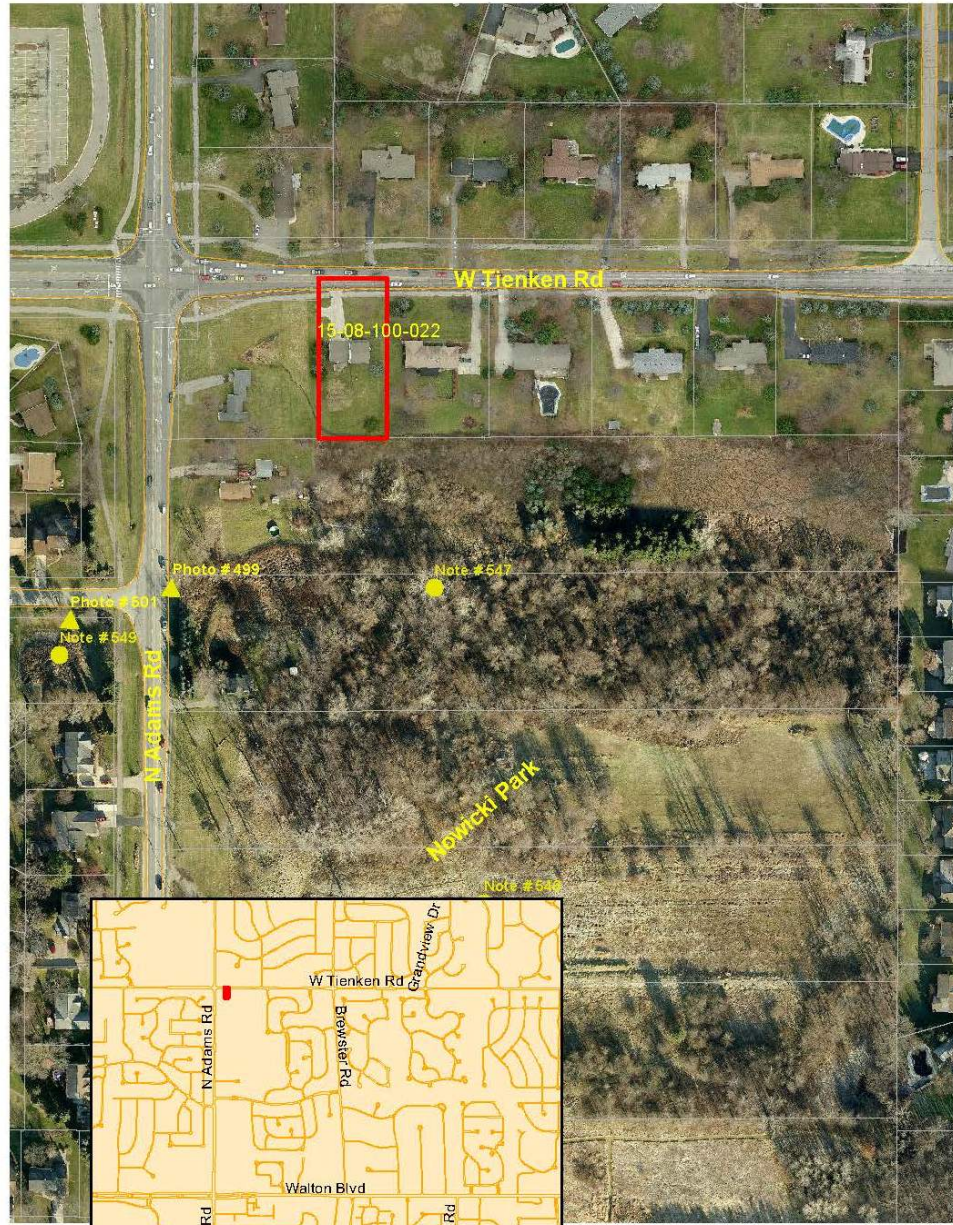
Rochester Rd. 15-02-102-023 (Treetop Lane)



974 Adams Road 15-08-100-021



2965 Tienken Road 15-08-100-022



Clinton River Valley 1 15-15-426-001



Blue Beach 15-02-127-005

