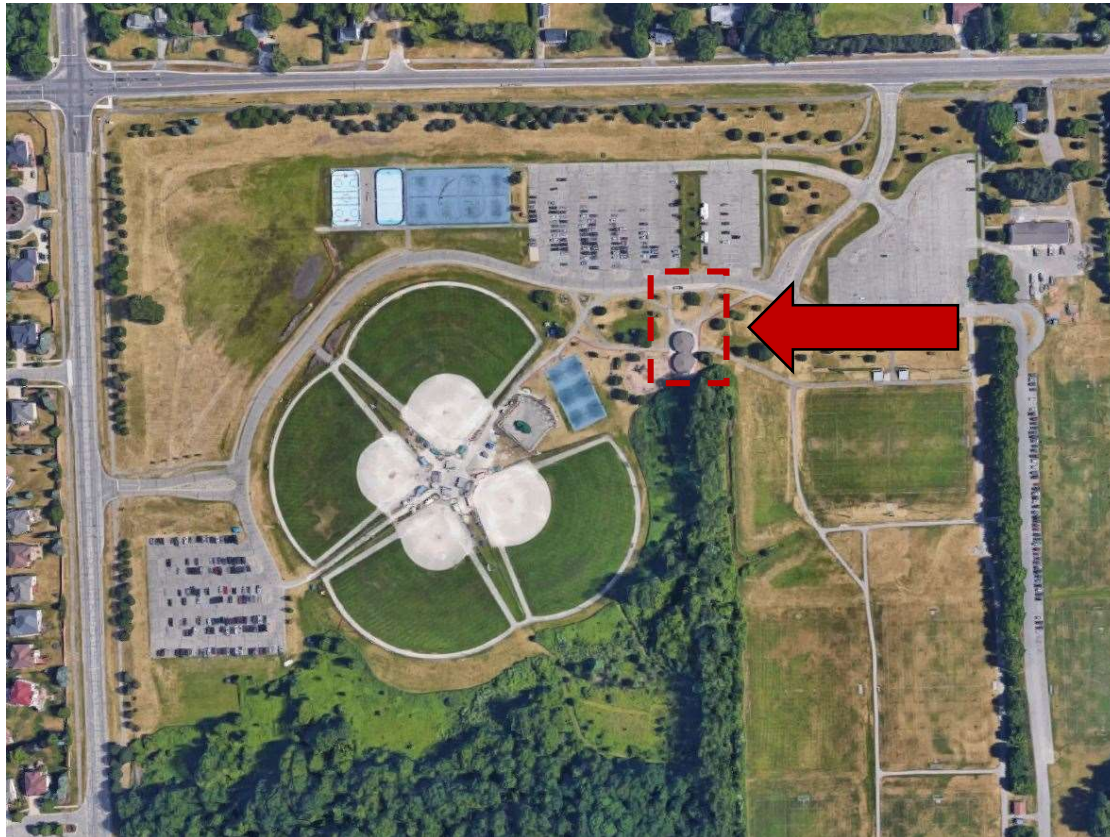


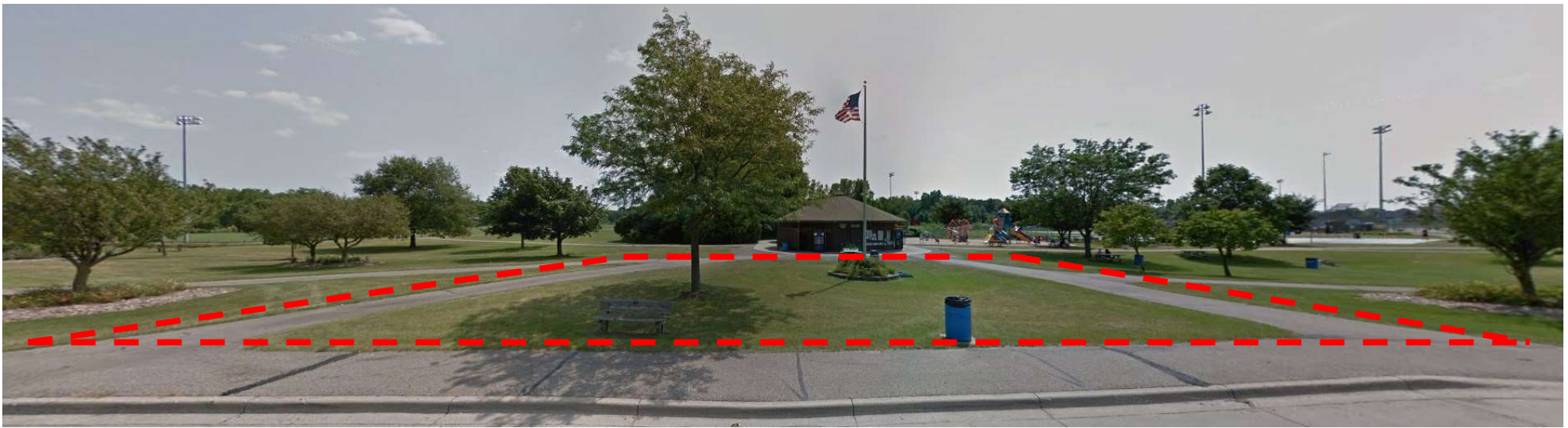
# City of Rochester Hills

## Borden Park Public Restroom and Park Office

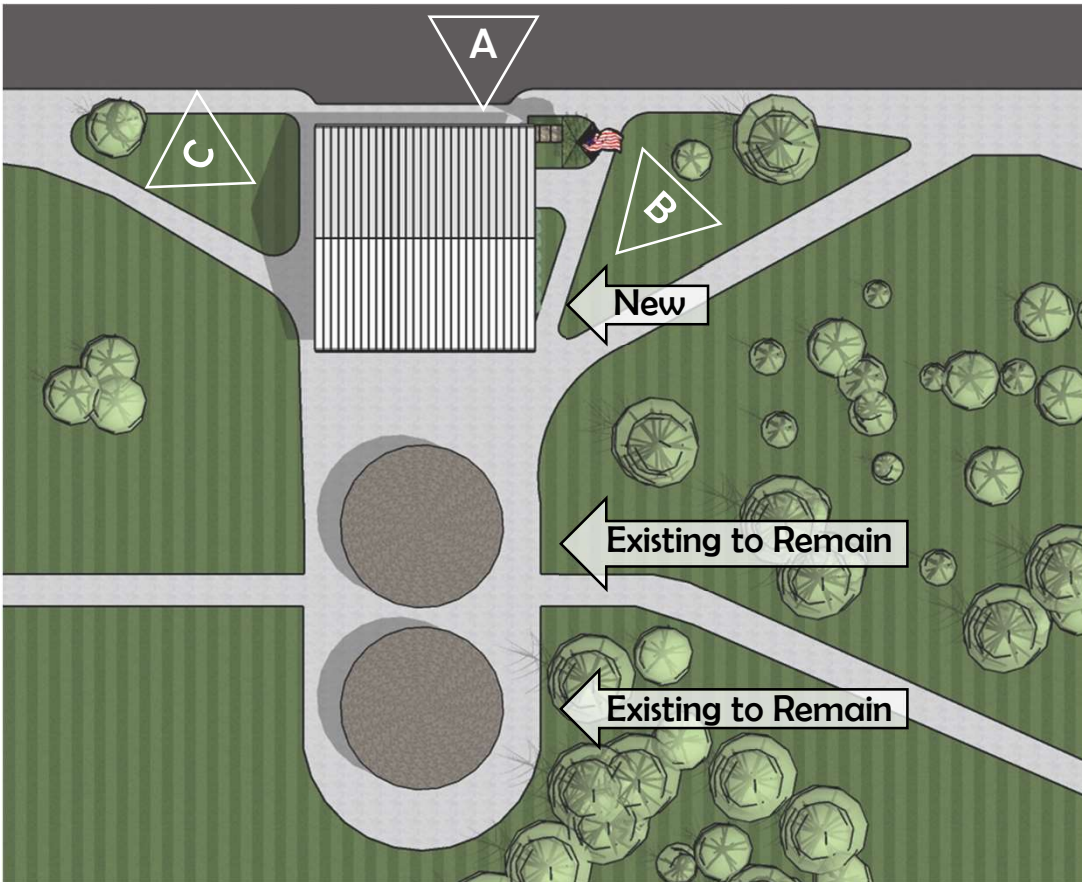
02/07/2022







Existing View A



Site Plan



Existing View B



Existing View C

# Features:

- Preserve existing restroom building until new building is ready
- Existing storage building to remain
- Large covered entrance/ gathering space
- Preserves pedestrian way
- Good connection with vehicular traffic
- Good visibility & Centrally located
- Creates outdoor covered gathering space
- 2,183 SF interior space
- 3,182 SF Footprint

**Key:**

- Employees
- Restrooms
- Open Office
- Meeting Room
- Storage/ Maintenance
- Corridor







*Northeast Face*



*Northwest Face*



*North Face*

