

WATERMAIN EASEMENT

A WATERMAIN EASEMENT LOCATED IN SECTION 30, T. 3 N., R. 11 E., CITY OF ROCHESTER HILLS, OAKLAND COUNTY, MICHIGAN, MORE PARTICULARLY DESCRIBED AS:

COMMENCING AT THE EAST 1/4 CORNER OF SECTION 30 AND PROCEEDING ALONG THE EAST AND WEST 1/4 LINE OF SECTION 30 S. 85°45'03" W. 942.80 FEET AND S. 32°42'01" E. 26.68 FEET AND S. 65°18'11" W. 258.97 FEET AND S. 24°35'28" E. 35.10 FEET TO A POINT ALONG THE NORTHERLY RIGHT-OF-WAY OF SOUTH ADAMS ROAD (VARIABLE WIDTH) AND ALONG SAID RIGHT-OF-WAY S. 63°06'17" W. 859.04 FEET AND ALONG THE WESTERLY VARIABLE WIDTH ROAD RIGHT-OF-WAY LINE OF MARKETPLACE CIRCLE N. 18°44'16" E. 17.87 FEET AND N. 25°37'45" W. 151.86 FEET AND S. 64°18'43" W. 25.14 FEET TO THE POINT OF BEGINNING OF A CENTERLINE FOR A 20 FOOT WIDE WATERMAIN EASEMENT; THENCE S. 67°06'23" W. 28.66 FEET; THENCE S. 63°06'17" W. 222.67 FEET; THENCE N. 71°53'43" W. 8.00 FEET; THENCE N. 26°53'43" W. 11.26 FEET TO A POINT "A"; THENCE FROM SAID POINT "A" S. 63°06'17" W. 61.70 FEET TO A POINT "AA"; THENCE S. 26°53'43" E. 24.42 FEET TO A POINT OF ENDING; THENCE FROM SAID POINT "AA" S. 63°06'17" W. 191.98 FEET TO A POINT "B"; THENCE S. 26°53'43" E. 23.97 FEET TO A POINT OF ENDING; THENCE FROM SAID POINT "B" S. 63°06'17" W. 137.84 FEET; THENCE N. 82°12'07" W. 90.77 FEET TO A POINT "C"; THENCE S. 07°47'53" W. 25.99 FEET TO A POINT OF ENDING; THENCE FROM SAID POINT "C" N. 82°12'07" W. 160.62 FEET; THENCE S. 85°10'47" W. 85.30 FEET TO A POINT "D"; THENCE S. 04°49'13" E. 25.99 FEET TO A POINT OF ENDING; THENCE FROM SAID POINT "D" S. 85°10'47" W. 28.20 FEET; THENCE N. 82°12'07" W. 200.61 FEET TO A POINT "E"; THENCE S. 07°47'53" W. 25.99 FEET TO A POINT OF ENDING; THENCE FROM SAID POINT "E" N. 82°12'07" W. 50.01 FEET TO A POINT "F"; THENCE S. 07°47'53" W. 18.80 FEET TO A POINT "G"; THENCE S. 07°47'53" W. 323.20 FEET; THENCE S. 52°47'53" W. 27.88 FEET; THENCE S. 08°04'03" W. 16.84 FEET TO A POINT ALONG THE NORTHERLY RIGHT-OF-WAY OF SOUTH ADAMS ROAD (VARIABLE WIDTH) AND A POINT OF ENDING; THENCE CONTINUING FROM SAID POINT "A" N. 26°53'43" W. 174.27 FEET; THENCE N. 71°51'59" W. 25.50 FEET; THENCE S. 63°09'44" W. 163.41 FEET; THENCE N. 82°12'07" W. 105.52 FEET TO A POINT "H"; THENCE N. 07°47'53" E. 20.15 FEET TO A POINT OF ENDING; THENCE FROM SAID POINT "H" N. 82°12'07" W. 249.90 FEET TO A POINT "I"; THENCE S. 07°47'53" W. 20.98 FEET TO A POINT OF ENDING; THENCE FROM SAID POINT "I" N. 82°12'07" W. 236.53 FEET TO A POINT "J"; THENCE S. 07°47'53" W. 21.03 FEET TO A POINT OF ENDING; THENCE FROM SAID POINT "J" N. 82°12'07" W. 64.69 FEET; THENCE S. 52°47'53" W. 27.31 FEET; THENCE S. 07°47'53" W. 147.70 FEET TO A POINT "K"; THENCE N. 82°12'07" W. 26.00 FEET TO A POINT OF ENDING; THENCE FROM SAID POINT "K" S. 07°47'53" W. 135.62 FEET TO SAID POINT "F"; THENCE CONTINUING FROM SAID POINT "G" N. 82°12'07" W. 18.10 FEET; THENCE N. 77°08'37" W. 9.98 FEET TO A POINT OF ENDING ON THE EASTERLY ROAD RIGHT-OF-WAY (VARIABLE WIDTH) OF MARKETPLACE CIRCLE; THENCE N. 77°08'37" W. 60.02 FEET TO A POINT "L" ON THE WESTERLY ROAD RIGHT-OF-WAY (VARIABLE WIDTH) OF MARKETPLACE CIRCLE, ALSO BEING THE POINT OF BEGINNING OF THE CENTERLINE OF A 20 FOOT WIDE WATERMAIN EASEMENT; THENCE FROM SAID POINT "L" CONTINUING ALONG SAID EASEMENT CENTERLINE N. 77°08'37" W. 10.00 FEET TO A POINT "M"; THENCE 30.00 FEET ALONG THE ARC OF A CURVE TO THE RIGHT, RADIUS 460.00 FEET, CENTRAL ANGLE 03°44'12", AND A CHORD THAT BEARS S. 14°43'29" W. 30.00 FEET TO A POINT OF ENDING; THENCE FROM SAID POINT "M" 16.51 FEET ALONG THE ARC OF A CURVE TO THE LEFT, RADIUS 460.00 FEET, CENTRAL ANGLE 02°03'25", AND A CHORD THAT BEARS N. 12°49'40" E. 16.51 FEET TO A POINT "MM"; THENCE N. 79°12'02" W. 89.76 FEET TO A POINT OF ENDING; THENCE FROM SAID POINT "MM" 24.10 FEET ALONG THE ARC OF A CURVE TO THE LEFT, RADIUS 460.00 FEET, CENTRAL ANGLE 03°00'05", AND A CHORD THAT BEARS N. 09°17'56" E. 24.09 FEET; THENCE N. 07°47'53" E. 12.93 FEET; THENCE N. 34°23'18" E. 13.42 FEET; THENCE N. 07°47'53" E. 26.12 FEET; THENCE N. 18°47'31" W. 13.42 FEET; THENCE N. 07°47'53" E. 58.76 FEET; THENCE 158.14 FEET ALONG THE ARC OF A CURVE TO THE LEFT, RADIUS 460.00 FEET, CENTRAL ANGLE 19°41'51", AND A CHORD THAT BEARS N. 02°03'02" W. 157.36 FEET; THENCE N. 11°53'58" W. 81.82 FEET; THENCE 290.18 FEET ALONG THE ARC OF A CURVE TO THE RIGHT, RADIUS 358.00 FEET, CENTRAL ANGLE 46°26'32", AND A CHORD THAT BEARS N. 11°19'18" E. 282.31 FEET; THENCE N. 05°56'23" W. 10.00 FEET; THENCE N. 41°48'24" W. 16.65 FEET TO A POINT "N"; THENCE S. 44°45'31" W. 30.00 TO A POINT OF ENDING; THENCE FROM SAID POINT "N" N. 44°45'31" E. 43.93 FEET; THENCE N. 06°13'53" W. 229.59 FEET TO A POINT "O"; THENCE N. 85°31'38" E. 27.92 FEET TO A POINT OF ENDING; THENCE FROM SAID POINT "O" N. 06°13'53" W. 172.70 FEET TO A POINT "P"; THENCE S. 83°48'08" W. 30.00 FEET TO A POINT OF ENDING; THENCE FROM SAID POINT "P" N. 84°54'26" E. 251.18 FEET; THENCE N. 85°30'22" E. 10.03 FEET TO A POINT "Q"; THENCE S. 03°44'33" E. 25.10 TO A POINT OF ENDING; THENCE FROM SAID POINT "Q" N. 85°30'22" E. 237.02 FEET TO A POINT "R"; THENCE S. 03°44'33" E. 21.45 FEET TO A POINT OF ENDING; THENCE FROM SAID POINT "R" N. 85°30'22" E. 233.02 FEET; THENCE N. 86°15'27" E. 15.00 FEET TO A POINT "S"; THENCE S. 03°44'33" E. 25.43 FEET TO A POINT OF ENDING; THENCE FROM SAID POINT "S" N. 86°15'27" E. 76.60 FEET TO A POINT "T"; THENCE N. 86°15'27" E. 195.80 FEET; THENCE S. 48°44'33" E. 11.03 FEET; THENCE S. 03°44'33" E. 19.70 FEET TO A POINT OF ENDING; THENCE FROM SAID POINT "T" S. 03°44'33" E. 166.74 FEET; THENCE S. 13°44'45" W. 19.13 FEET TO A POINT "U"; THENCE S. 76°15'15" E. 13.38 FEET; THENCE N. 86°15'27" E. 109.39 FEET TO A POINT OF ENDING; THENCE FROM SAID POINT "U" S. 13°44'45" W. 80.10 FEET; THENCE S. 25°33'48" W. 10.27 FEET TO A POINT OF ENDING ON THE NORTHERLY VARIABLE WIDTH ROAD RIGHT-OF-WAY LINE OF MARKETPLACE CIRCLE.

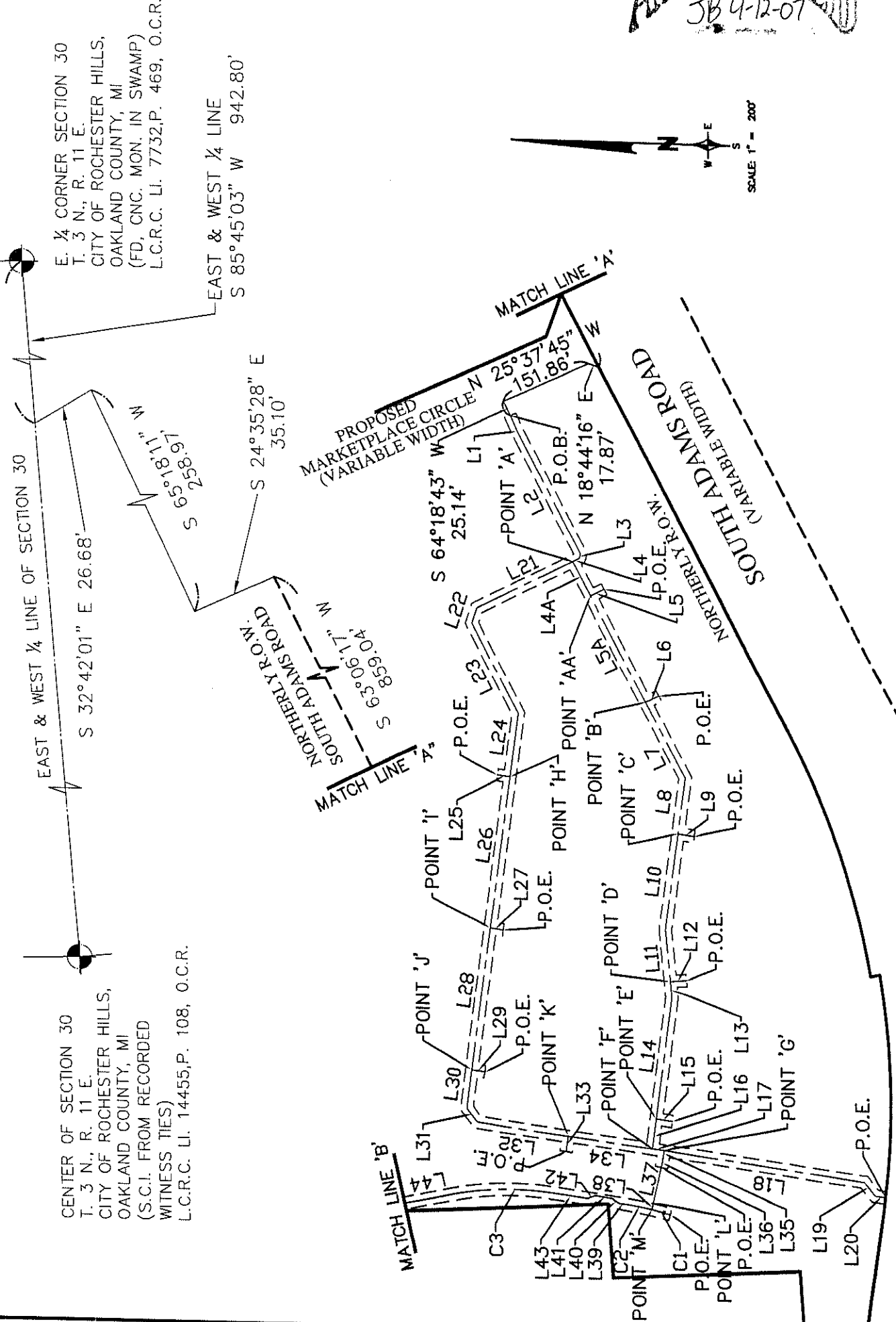
APPROVED
 5-7-07 Kar
 22

H:\Projects\97144\dwg\Eng\97144 WM ESMT WM Extension.dwg, Watermain Ease (Sheet 1), 5/7/2007 9:57:53 AM, SBlaszczyk

REVISIONS			WATERMAIN EASEMENT ADAMS MARKETPLACE ROCHESTER HILLS, MICHIGAN		DATE	SCALE HOR: 1" = 200'
ITEM	DATE	BY	 Civil Engineers & Land Surveyors 40024 GRAND RIVER AVE, SUITE 100 NOVI, MICHIGAN 48375 P: (248) 442-1101 F: (248) 442-1241 www.zeimetwozniak.com		02/01/07	FIELD BOOK NO.
PLAN UPDATE	3/21/07	JMB			DESIGNED BY	JOB NO.
PER CITY	4/12/07	DAB			SRB	97144
UPDATE PER CITY	5/7/07	SRB			DRAWN BY	SHEET NO.
			DAB	1		

H:\Projects\197144\dwg\Eng\197144 WM ESMT WM Extension.dwg, Watermain Ease (Sheet 2), 4/12/2007 10:15:23 AM, DBirnbyer

APPROVED
JB 4-12-07



REVISIONS		
ITEM	DATE	BY
PLAN UPDATE	3/21/07	JMB
PER CITY	4/12/07	DAB

**WATERMAIN EASEMENT
ADAMS MARKETPLACE
ROCHESTER HILLS, MICHIGAN**

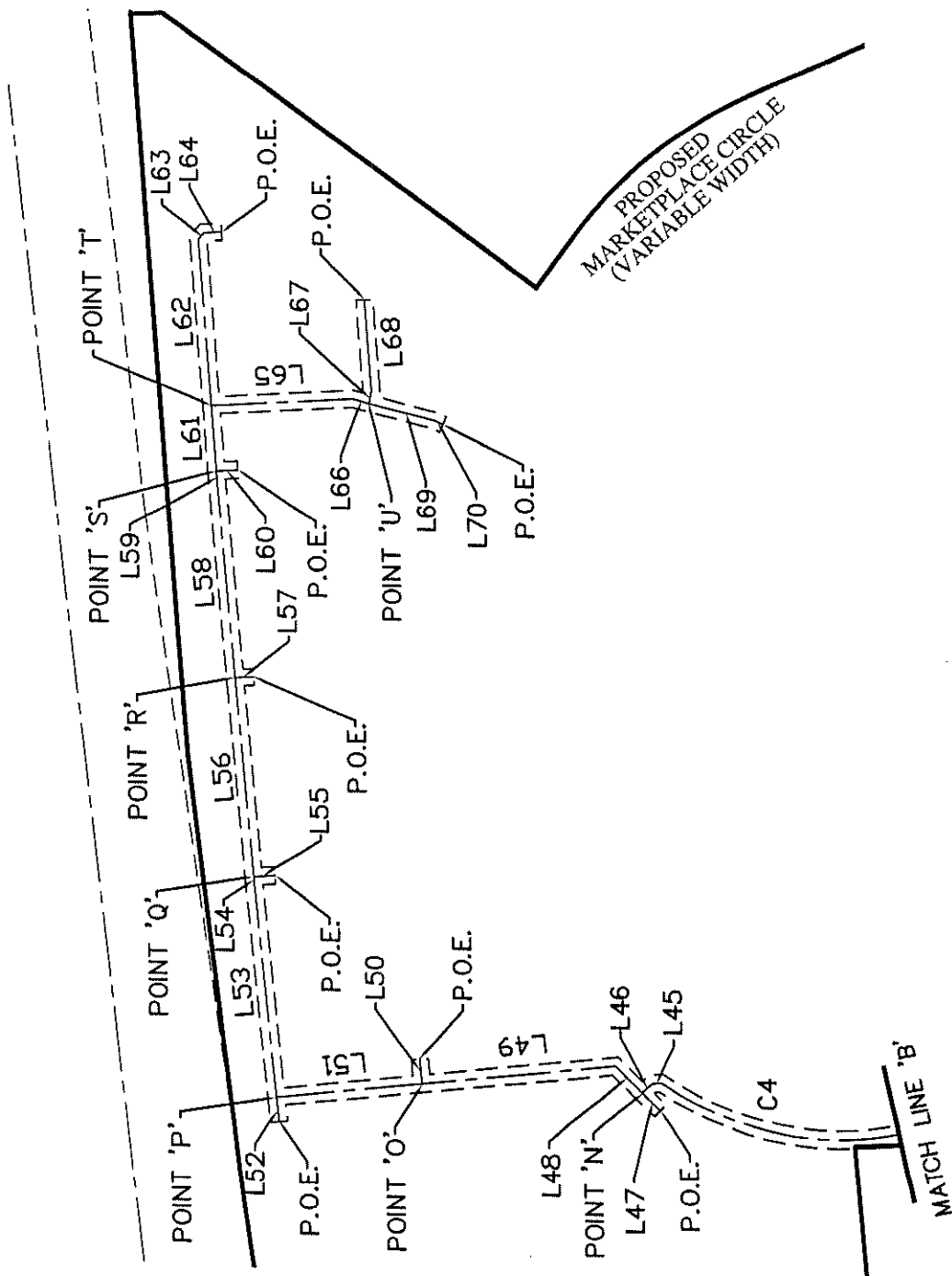
ZEIMET WOZNAK
& ASSOCIATES
Civil Engineers & Land Surveyors
40024 GRAND RIVER AVE, SUITE 100
NOVI, MICHIGAN 48375
P: (248) 442-1101 F: (248) 442-1241 www.zeimetwozniak.com

DATE	02/01/07	SCALE	HOR: 1" = 200'
DESIGNED BY	SRB	FIELD BOOK NO.	
DRAWN BY	DAB	JOB NO.	97144
		SHEET NO.	2

APPROVED
 JB 4-12-07



SCALE 1" = 200'



H:\Projects\97144\dwg\Eng\97144 WM ESMT WM Extension.dwg, Watermain Ease (Sheet 3), 4/12/2007 10:17:02 AM, DBimbryer

REVISIONS		
ITEM	DATE	BY
PLAN UPDATE	3/21/07	JMB
PER CITY	4/12/07	DAB

**WATERMAIN EASEMENT
 ADAMS MARKETPLACE
 ROCHESTER HILLS, MICHIGAN**

Z EIMET W OZNI AK
 & ASSOCIATES
 Civil Engineers & Land Surveyors
 40024 GRAND RIVER AVE, SUITE 100
 NOVI, MICHIGAN 48375
 P: (248) 442-1101 F: (248) 442-1241 www.zeimetwozniak.com

DATE	02/01/07	SCALE	HOR: 1" = 200'
DESIGNED BY	SRB	FIELD BOOK NO.	
DRAWN BY	DAB	JOB NO.	97144
		SHEET NO.	3

CURVE TABLE					
NO.	RADIUS	ARC LENGTH	DELTA	CHORD LENGTH	CHORD BEARING
C1	460.00	30.00	03°44'12"	30.00	S14°43'29"W
C2	460.00	24.10	03°00'05"	24.09	N09°17'56"E
C3	460.00	158.14	19°41'51"	157.36	N02°03'02"W
C4	358.00	290.18	46°26'32"	282.31	N11°19'18"E
C5	460.00	16.51	02°03'25"	16.51	N12°49'40"E

LINE TABLE					
LINE	BEARING	LENGTH	LINE	BEARING	LENGTH
L1	S67°06'23"W	28.66	L35	N82°12'07"W	18.10
L2	S63°06'17"W	222.67	L36	N77°08'37"W	9.98
L3	N71°53'43"W	8.00	L37	N77°08'37"W	60.02
L4	N26°53'43"W	11.26	L38	N77°08'37"W	10.00
L4A	S63°06'17"W	61.70	L39	N07°47'53"E	12.93
L5	S26°53'43"E	24.42	L40	N34°23'18"E	13.42
L5A	S63°06'17"W	191.98	L41	N07°47'53"E	26.12
L6	S26°53'43"E	23.97	L42	N18°47'31"W	13.42
L7	S63°06'17"W	137.84	L43	N07°47'53"E	58.76
L8	N82°12'07"W	90.77	L44	N11°53'58"W	81.82
L9	S07°47'53"W	25.99	L45	N05°56'23"W	10.00
L10	N82°12'07"W	160.62	L46	N41°48'24"W	16.65
L11	S85°10'47"W	85.30	L47	S44°45'31"W	30.00
L12	S04°49'13"E	25.99	L48	N44°45'31"E	43.93
L13	S85°10'47"W	28.20	L49	N06°13'53"W	229.59
L14	N82°12'07"W	200.61	L50	N85°31'38"E	27.92
L15	S07°47'53"W	25.99	L51	N06°13'53"W	172.70
L16	N82°12'07"W	50.01	L52	S83°48'08"W	30.00
L17	S07°47'53"W	18.80	L53	N84°54'26"E	251.18
L18	S07°47'53"W	323.20	L54	N85°30'22"E	10.03
L19	S52°47'53"W	27.88	L55	S03°44'33"E	25.10
L20	S08°04'03"W	16.84	L56	N85°30'22"E	237.02
L21	N26°53'43"W	174.27	L57	S03°44'33"E	21.45
L22	N71°51'59"W	25.50	L58	N85°30'22"E	233.02
L23	S63°09'44"W	163.41	L59	N86°15'27"E	15.00
L24	N82°12'07"W	105.52	L60	S03°44'33"E	25.43
L25	N07°47'53"E	20.15	L61	N86°15'27"E	76.60
L26	N82°12'07"W	249.90	L62	N86°15'27"E	195.80
L27	S07°47'53"W	20.98	L63	S48°44'33"E	11.03
L28	N82°12'07"W	236.53	L64	S03°44'33"E	19.70
L29	S07°47'53"W	21.03	L65	S03°44'33"E	166.74
L30	N82°12'07"W	64.69	L66	S13°44'45"W	19.13
L31	S52°47'53"W	27.31	L67	S76°15'15"E	13.38
L32	S07°47'53"W	147.70	L68	N86°15'27"E	109.39
L33	N82°12'07"W	26.00	L69	S13°44'45"W	80.10
L34	S07°47'53"W	135.62	L70	S25°33'48"W	10.27
			L71	N79°12'02"W	89.76

APPROVED
5-7-07 Rev
JB

REVISIONS		
ITEM	DATE	BY
PLAN UPDATE	3/21/07	JMB
PER CITY	4/12/07	DAB
UPDATE PER CITY	5/7/07	SRB

WATERMAIN EASEMENT
ADAMS MARKETPLACE
 ROCHESTER HILLS, MICHIGAN

Zeimet Wozniak & Associates
 Civil Engineers & Land Surveyors
 40024 GRAND RIVER AVE, SUITE 100
 NOVI, MICHIGAN 48375
 P: (248) 442-1101 F: (248) 442-1241 www.zeimetwozniak.com

DATE	02/01/07	SCALE	HOR: 1" = 200'
DESIGNED BY	SRB	FIELD BOOK NO.	
JOB NO.	97144		
DRAWN BY	DAB	SHEET NO.	4

H:\Projects\97144\dwg\Eng\97144 WM ESMT WM Extension.dwg (Sheet 4), 5/7/2007 9:57:05 AM, SBiaszczyk