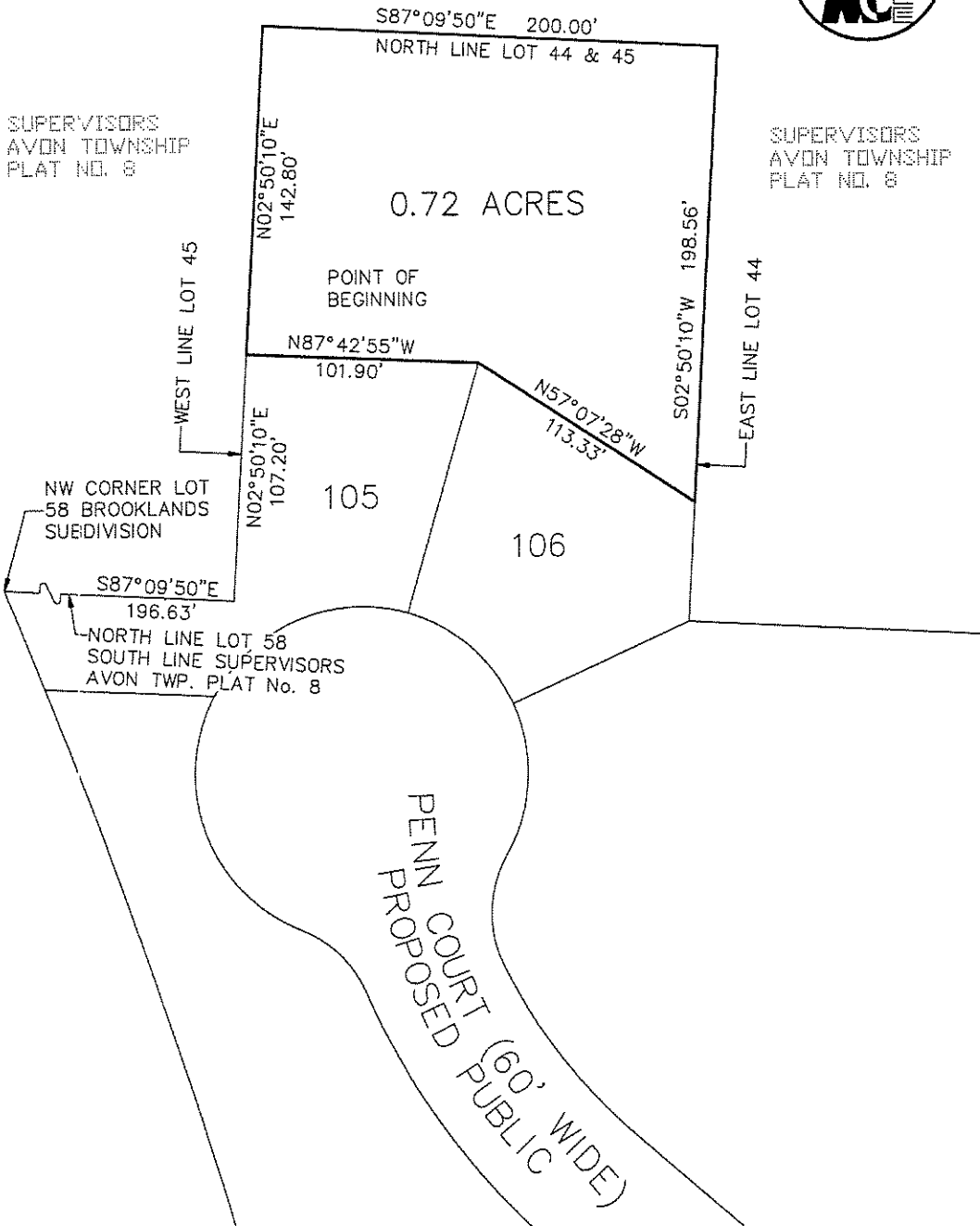


AUBURN ROAD  
(66' WIDE)



SKETCH OF A 0.72 ACRE PARCEL OF LAND LOCATED IN SECTION 35, T3N, R11E, CITY OF ROCHESTER HILLS, OAKLAND COUNTY, MICHIGAN

CLIENT: REI	DATE: 7/13/04	
JOB NO.: <b>02325</b>	SHEET 1 OF 2	
SECTION: 35    TWN: 3N    RANGE: 11E	SCALE: 1in. = 60 ft.	
CITY OF ROCHESTER HILLS	BOOK: #	
OAKLAND COUNTY, MICHIGAN	BY: MGW	
<b>MIDWESTERN CONSULTING</b> 		
Civil, Environmental and Transportation Engineers Planners, Surveyors Landscape Architects		
3815 Plaza Drive Ann Arbor, Michigan 48108 Phone: 734.995.0200 Fax 734.995.0599		

