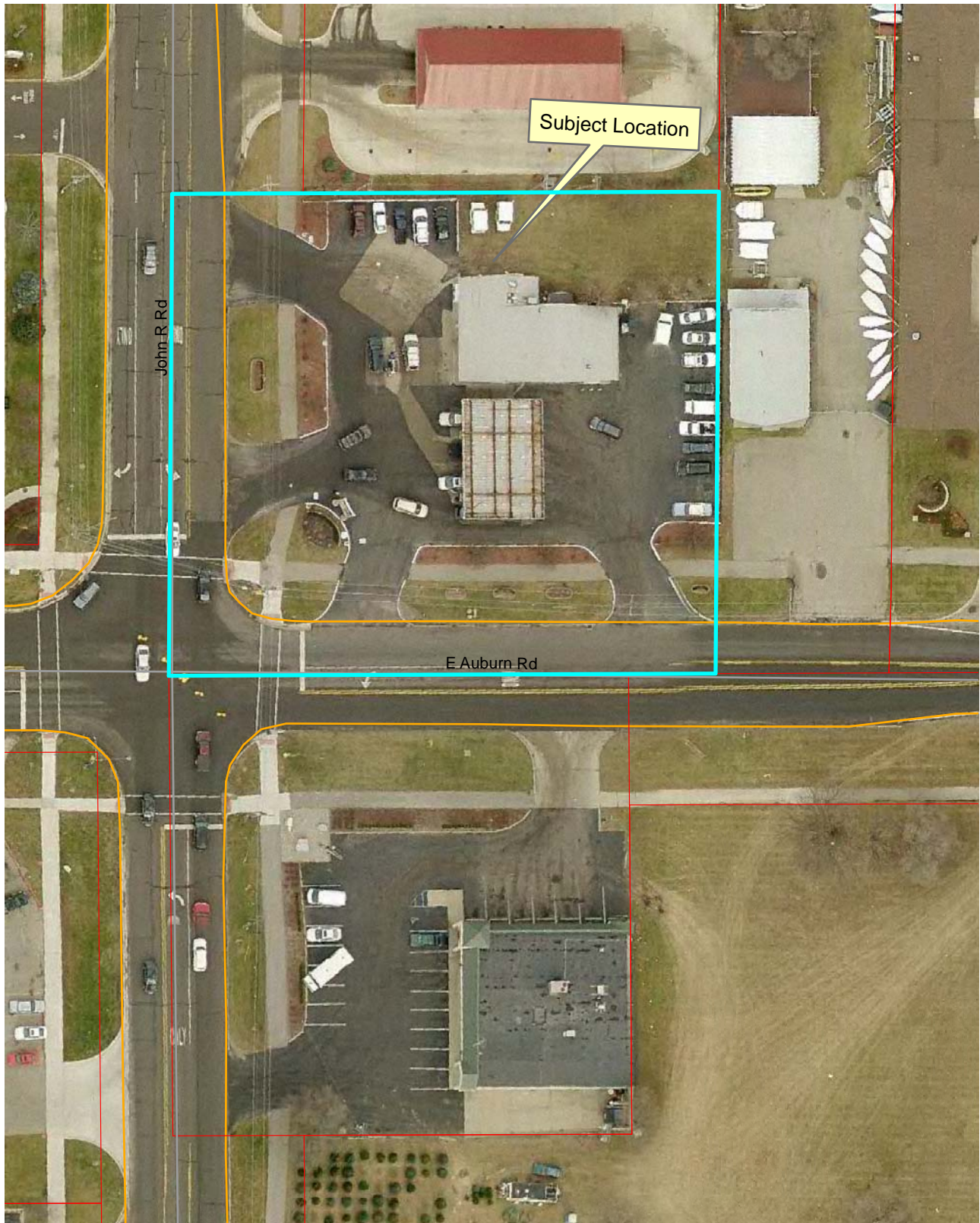


Location Map 1015 E. Auburn Rd.



Legend	
	TaxParcel With Street Name
	TaxParcel
	Right-of-Way
	Pictometry2011/Kelly
	2008
	Rail - Band_1
	Green - Band_2
	Blue - Band_3

Aerial photographs as of April 2010
 TaxParcel lines were obtained on 1/2/12 from Oakland County.
 Although the information provided by this map is believed to be reliable, its accuracy is not warranted in any way. The City of Rochester Hills assumes no liability for any claims arising from the use of this map.

7-5-11

1 inch = 67 feet