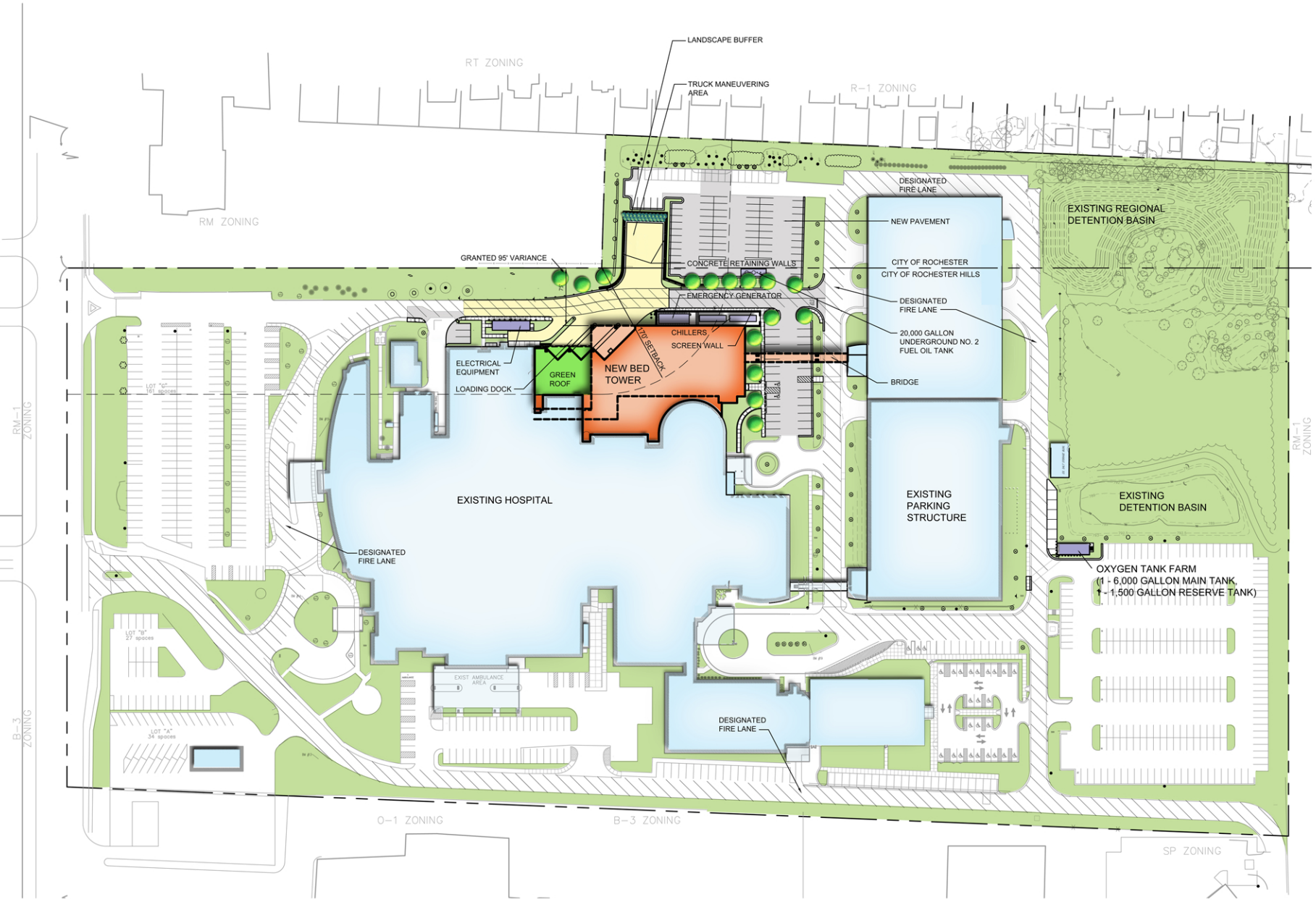


Cornerstone
Program
Bed Tower
Addition

1101 W. University Dr.
Rochester Hills, MI 48307

Date	Issue
02/07/11	Rochester Meeting
02/14/11	Rochester SPA
02/17/11	Rochester Hills ZBA
02/22/11	Rochester Hills Mng.
02/25/2011	Rochester Hills SPA
03/04/2011	Construction Issue 1
03/04/2011	Engineering Review
03/14/2011	Rochester SPA
03/16/2011	Soil Erosion Control Permit
04/28/2011	Rochester Hills SPA



GENERAL SITE PLAN
SCALE: 1"=60'



**HARLEY ELLIS
DEVEREAUX**

26913 Northwestern Hwy
Suite 200
Southfield, Michigan
48033-3476 USA

(tel) (248) 262.1500
(fax) (248) 262.1515
harleyellis@devereaux.com

Planning
Architecture
Engineering
Interior Architecture
Landscape Architecture
Construction Services
Copyright © 2011

Project No.	2010-10062-000
Drawn	D. Axelrood
Checked	D. Axelrood
Approved	D. Axelrood

Title **General
Site
Plan**

Sheet No. **GS-01**



SOUTH VIEW

03.29.2011





NORTHEAST VIEW

03.29.2011



ARTISTIC RENDERING



**Crittenton Hospital
Medical Center**

**Cornerstone
Program
Bed Tower
Addition**

1101 W. University Dr.
Rochester Hills, MI 48307

Date	Issue
02/07/11	Rochester Meeting
02/14/11	Rochester SPA
02/17/11	Rochester Hills ZBA
02/22/11	Rochester Hills Mtg.
02/25/2011	Rochester Hills SPA
03/04/2011	Construction Issue 1
03/04/2011	Engineering Review
03/14/2011	Rochester SPA
03/16/2011	Soil Erosion Control Permit
04/14/2011	Rochester Hills SPA
04/15/2011	Engineering Review
04/18/2011	Construction Issue 1R
04/27/2011	Rochester SPA
04/28/2011	Rochester Hills SPA



**HARLEY ELLIS
DEVEREAUX**

26913 Northwestern Hwy
Suite 200
Southfield, Michigan
48033-3476 USA

(tel) (248) 262.1500
(fax) (248) 262.1515
harleyellis@devereaux.com

Planning
Architecture
Engineering
Interior Architecture
Landscape Architecture
Construction Services

Copyright © 2011

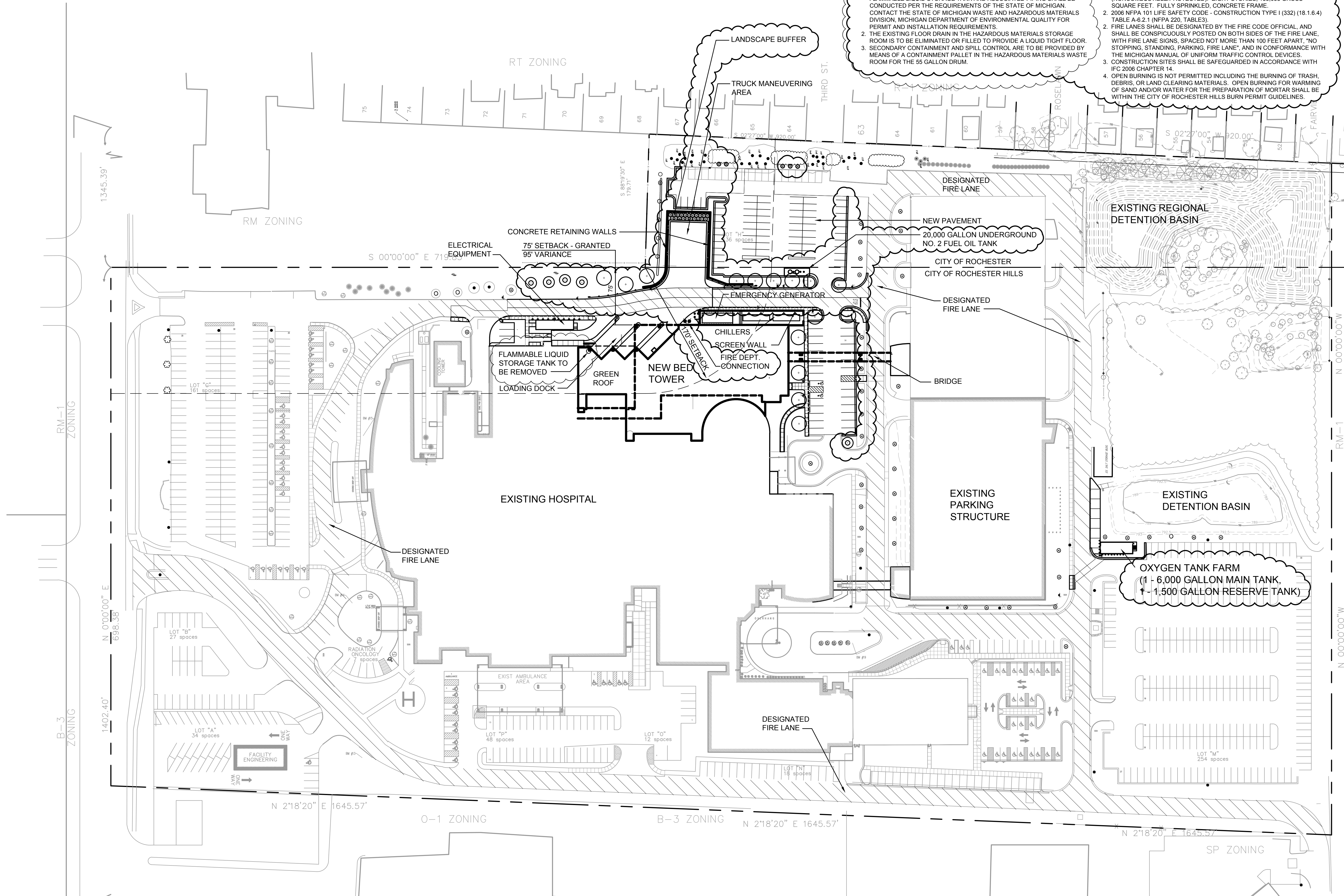
Project No.	2010-10062-000
Drawn	D. Axelrood
Checked	D. Axelrood
Approved	D. Axelrood

Title **General
Site
Plan**

Sheet No. **GS-01**

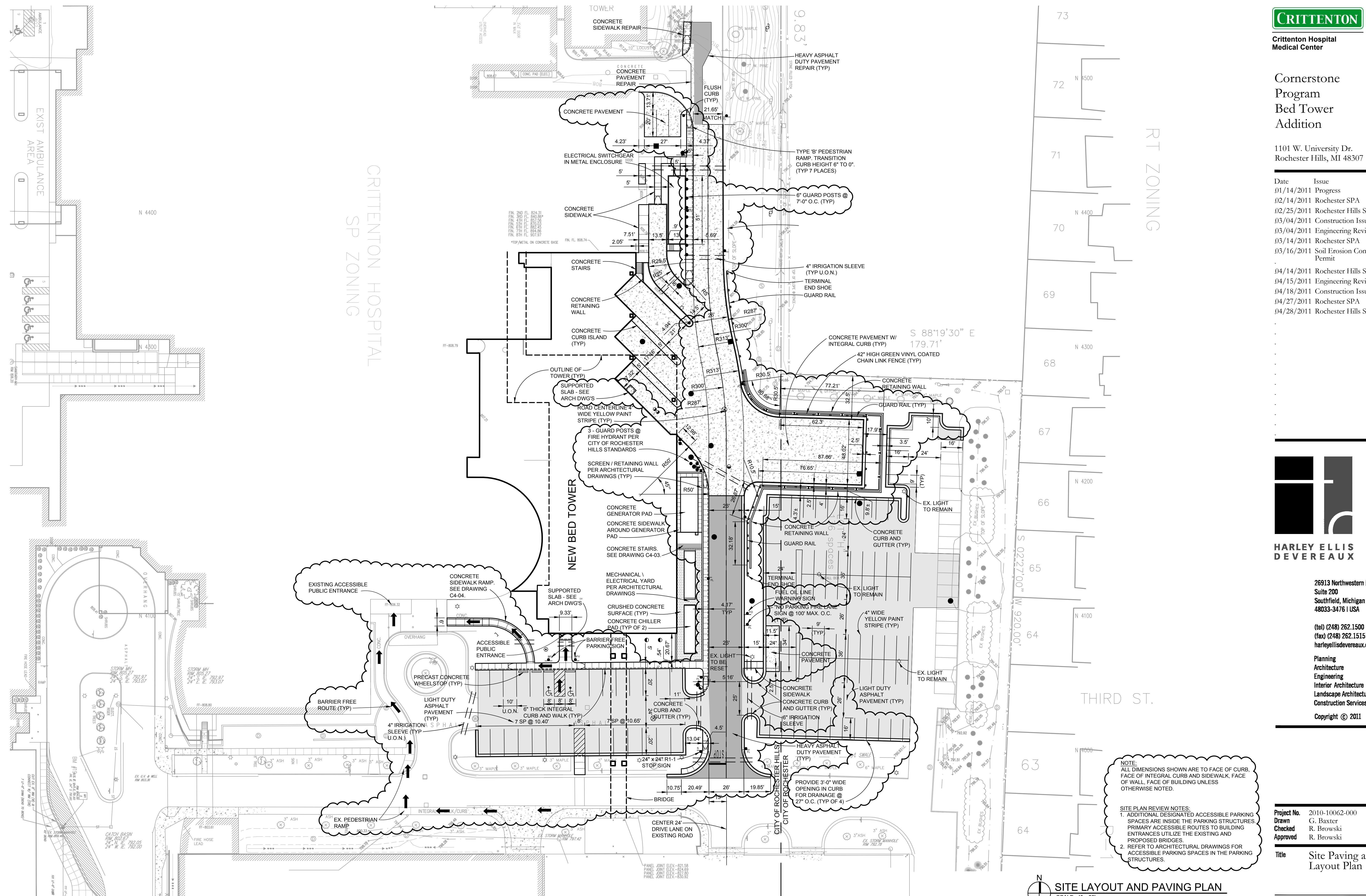
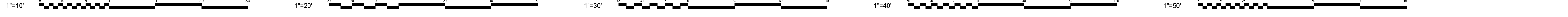
- FIRE DEPARTMENT NOTES**
- 2009 MICHIGAN BUILDING CODE - CONSTRUCTION TYPE 1A (TABLE 503) (NONCOMBUSTIBLE/PROTECTED), EIGHT STORIES, 155,058 GROSS SQUARE FEET. FULLY SPRINKLED, CONCRETE FRAME.
 - 2006 NFPA 101 LIFE SAFETY CODE - CONSTRUCTION TYPE I (332) (18.1.6.4) TABLE A-6.2.1 (NFPA 220, TABLES).
 - FIRE LANES SHALL BE DESIGNATED BY THE FIRE CODE OFFICIAL, AND SHALL BE CONSPICUOUSLY POSTED ON BOTH SIDES OF THE FIRE LANE, WITH FIRE LANE SIGNS, SPACED NOT MORE THAN 100 FEET APART, "NO STOPPING, STANDING, PARKING, FIRE LANE", AND IN CONFORMANCE WITH THE MICHIGAN MANUAL OF UNIFORM TRAFFIC CONTROL DEVICES.
 - CONSTRUCTION SITES SHALL BE SAFEGUARDED IN ACCORDANCE WITH IFC 2006 CHAPTER 14.
 - OPEN BURNING IS NOT PERMITTED INCLUDING THE BURNING OF TRASH, DEBRIS, OR LAND CLEARING MATERIALS. OPEN BURNING FOR WARMING OF SAND AND/OR WATER FOR THE PREPARATION OF MORTAR SHALL BE WITHIN THE CITY OF ROCHESTER HILLS BURN PERMIT GUIDELINES.

- FLAMMABLE LIQUID STORAGE TANK NOTES**
- THE REMOVAL AND REPLACEMENT OF THE EXISTING UNDERGROUND FLAMMABLE LIQUID STORAGE TANK AND ASSOCIATED PIPING SHALL BE CONDUCTED PER THE REQUIREMENTS OF THE STATE OF MICHIGAN. CONTACT THE STATE OF MICHIGAN WASTE AND HAZARDOUS MATERIALS DIVISION, MICHIGAN DEPARTMENT OF ENVIRONMENTAL QUALITY FOR PERMIT AND INSTALLATION REQUIREMENTS.
 - THE EXISTING FLOOR DRAIN IN THE HAZARDOUS MATERIALS STORAGE ROOM IS TO BE ELIMINATED OR FILLED TO PROVIDE A LIQUID TIGHT FLOOR. SECONDARY CONTAINMENT AND SPILL CONTROL ARE TO BE PROVIDED BY MEANS OF A CONTAINMENT PALLET IN THE HAZARDOUS MATERIALS WASTE ROOM FOR THE 55 GALLON DRUM.



GENERAL SITE PLAN
SCALE: 1"=60'





**Crittenton Hospital
Medical Center**

**Cornerstone
Program
Bed Tower
Addition**

1101 W. University Dr.
Rochester Hills, MI 48307

Date	Issue
01/14/2011	Progress
02/14/2011	Rochester SPA
02/25/2011	Rochester Hills SPA
03/04/2011	Construction Issue 1
03/04/2011	Engineering Review
03/14/2011	Rochester SPA
03/16/2011	Soil Erosion Control Permit
04/14/2011	Rochester Hills SPA
04/15/2011	Engineering Review
04/18/2011	Construction Issue 1R
04/27/2011	Rochester SPA
04/28/2011	Rochester Hills SPA



**HARLEY ELLIS
DEVEREAUX**

26913 Northwestern Hwy
Suite 200
Southfield, Michigan
48033-3476 USA

(tel) (248) 262.1500
(fax) (248) 262.1515
harleyellis@devereaux.com

Planning
Architecture
Engineering
Interior Architecture
Landscape Architecture
Construction Services

Copyright © 2011

Project No. 2010-10062-000
Drawn G. Baxter
Checked R. Browksi
Approved R. Browksi

Title Site Paving and
Layout Plan

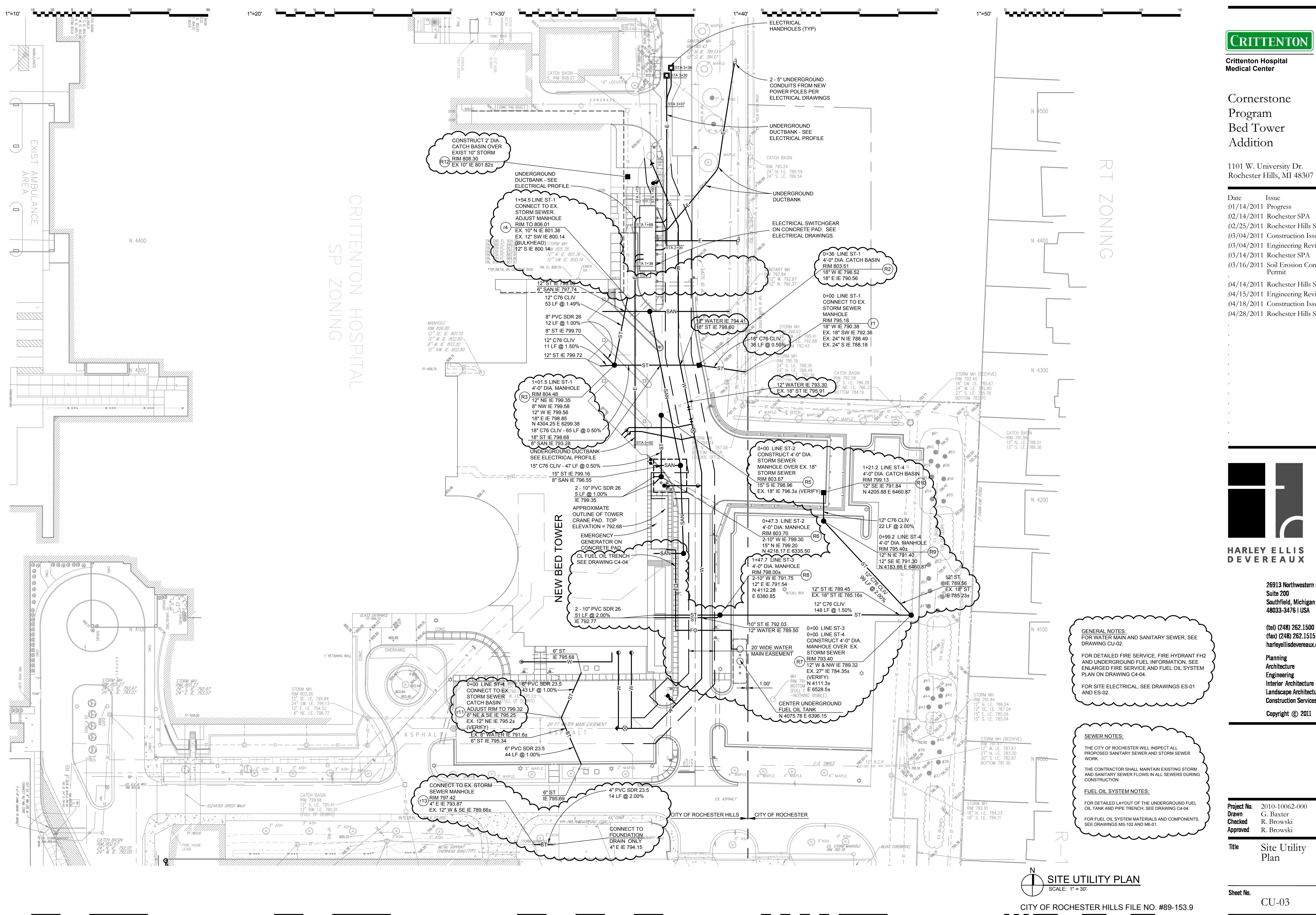
Sheet No. CP-01

NOTE:
ALL DIMENSIONS SHOWN ARE TO FACE OF CURB,
FACE OF INTEGRAL CURB AND SIDEWALK, FACE
OF WALL, FACE OF BUILDING UNLESS
OTHERWISE NOTED.

SITE PLAN REVIEW NOTES:
1. ADDITIONAL DESIGNATED ACCESSIBLE PARKING
SPACES ARE INSIDE THE PARKING STRUCTURES.
PRIMARY ACCESSIBLE ROUTES TO BUILDING
ENTRANCES UTILIZE THE EXISTING AND
PROPOSED BRIDGES.
2. REFER TO ARCHITECTURAL DRAWINGS FOR
ACCESSIBLE PARKING SPACES IN THE PARKING
STRUCTURES.

SITE LAYOUT AND PAVING PLAN
SCALE: 1" = 30'

CITY OF ROCHESTER HILLS FILE NO. #89-153.9



Date	Issue
01/14/2011	Progress
02/14/2011	Rochester SPA
02/25/2011	Rochester Hills SPA
03/04/2011	Construction Issue 1
03/04/2011	Engineering Review
03/14/2011	Rochester SPA
03/16/2011	Soil Erosion Control Permit
04/14/2011	Rochester Hills SPA
04/15/2011	Engineering Review
04/18/2011	Construction Issue 1R
04/28/2011	Rochester Hills SPA



GENERAL NOTES:
FOR WATER MAIN AND SANITARY SEWER, SEE DRAWING CU-02.
FOR DETAILED FIRE SERVICE, FIRE HYDRANT FH2 AND UNDERGROUND FUEL INFORMATION, SEE ENLARGED FIRE SERVICE AND FUEL OIL SYSTEM PLAN ON DRAWING C4-04.
FOR SITE ELECTRICAL, SEE DRAWINGS ES-01 AND ES-02.

SEWER NOTES:
THE CITY OF ROCHESTER WILL INSPECT ALL PROPOSED SANITARY SEWER AND STORM SEWER WORK.
THE CONTRACTOR SHALL MAINTAIN EXISTING STORM AND SANITARY SEWER FLOWS IN ALL SEWERS DURING CONSTRUCTION.
FUEL OIL SYSTEM NOTES:
FOR DETAILED LAYOUT OF THE UNDERGROUND FUEL OIL TANK AND PIPE TRENCH, SEE DRAWING C4-04.
FOR FUEL OIL SYSTEM MATERIALS AND COMPONENTS, SEE DRAWINGS MS-102 AND MS-01.

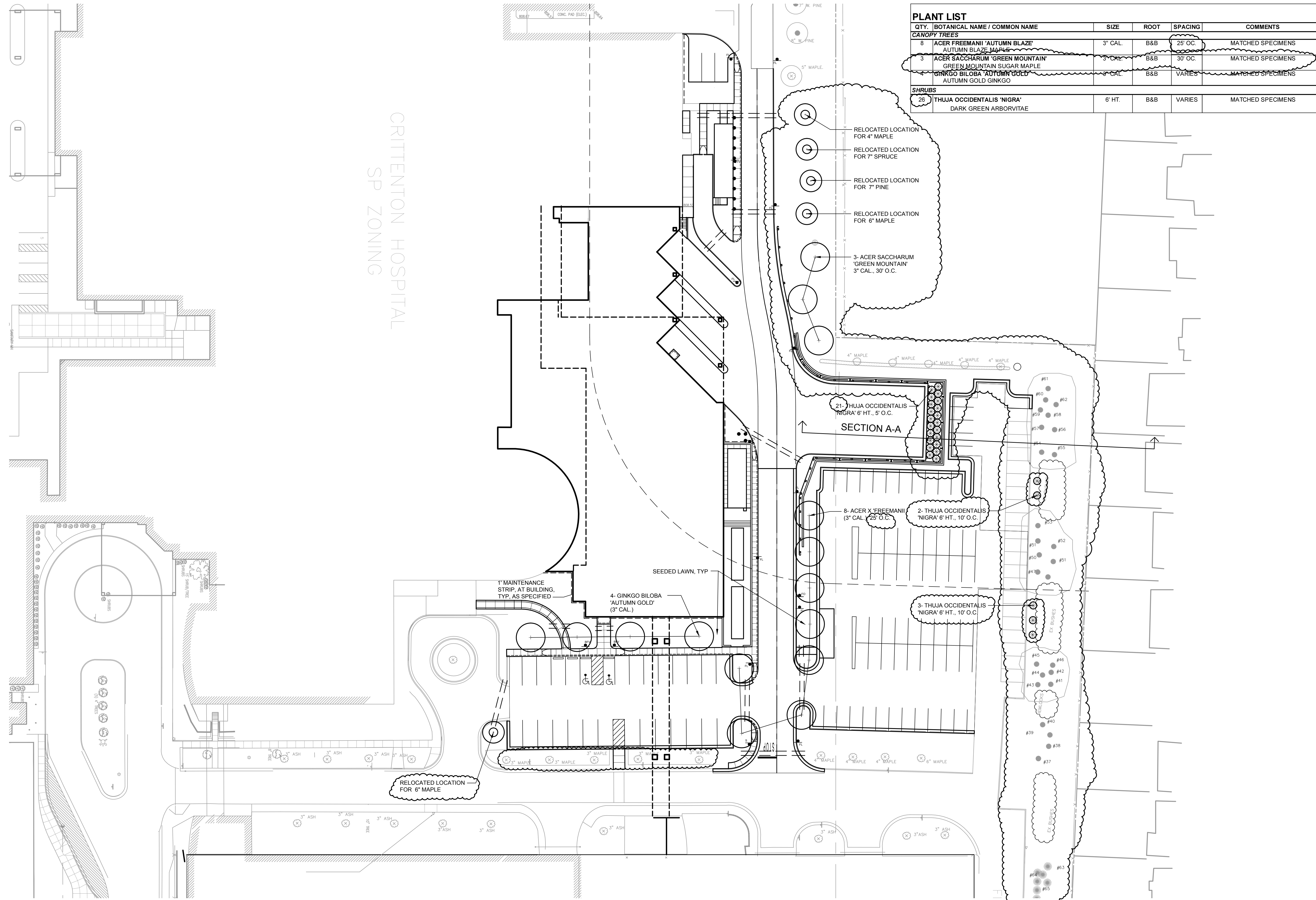
1"=10'

1"=20'

1"=30'

1"=40'

1"=50'



PLANT LIST					
QTY.	BOTANICAL NAME / COMMON NAME	SIZE	ROOT	SPACING	COMMENTS
CANOPY TREES					
8	ACER FREEMANII 'AUTUMN BLAZE' AUTUMN BLAZE MAPLE	3" CAL.	B&B	25' O.C.	MATCHED SPECIMENS
3	ACER SACCHARUM 'GREEN MOUNTAIN' GREEN MOUNTAIN SUGAR MAPLE	3" CAL.	B&B	30' O.C.	MATCHED SPECIMENS
4	GINKGO BILOBA 'AUTUMN GOLD' AUTUMN GOLD GINKGO	3" CAL.	B&B	VARIES	MATCHED SPECIMENS
SHRUBS					
26	THUJA OCCIDENTALIS 'NIGRA' DARK GREEN ARBORVITAE	6' HT.	B&B	VARIES	MATCHED SPECIMENS



Crittenton Hospital
Medical Center

Cornerstone
Program
Bed Tower
Addition

1101 W. University Dr.
Rochester Hills, MI 48307

Date	Issue
01/14/2011	Progress
01/26/2011	Rochester Hills Mtg.
02/14/2011	Rochester SPA
02/25/2011	Rochester Hills SPA
03/04/2011	Construction Issue 1
03/04/2011	Engineering Review
03/14/2011	Rochester SPA
04/14/2011	Rochester Hills SPA
04/15/2011	Engineering Review
04/18/2011	Construction Issue 1R
04/27/2011	Rochester SPA
04/28/2011	Rochester Hills SPA



HARLEY ELLIS
DEVEREAUX

26913 Northwestern Hwy
Suite 200
Southfield, Michigan
48033-3476 USA

(tel) (248) 262.1500
(fax) (248) 262.1515
harleyellisdevereaux.com

Planning
Architecture
Engineering
Interior Architecture
Landscape Architecture
Construction Services
Copyright © 2011

Project No.	2010-10062-000
Drawn	D. Axelrood
Checked	D. Axelrood
Approved	D. Axelrood

Title Landscape
Plan

Sheet No.
LP-01

3"=1'-0"

1 1/2"=1'-0"

3/4"=1'-0"

1/4"=1'-0"

1/8"=1'-0"

NOTE:
1. SEED ALL DISTURBED AREAS, TYP.

LANDSCAPE PLAN
SCALE: 1" = 30'

Date	Issue
01/14/2011	Progress
01/26/2011	Rochester Hills Mtg.
02/14/2011	Rochester SPA
02/25/2011	Rochester Hills SPA
03/04/2011	Construction Issue 1
03/04/2011	Engineering Review
04/14/2011	Rochester Hills SPA
04/15/2011	Engineering Review
04/27/2011	Rochester SPA
04/28/2011	Rochester Hills SPA

GRABER & ASSOCIATES LLC
COMMERCIAL IRRIGATION DESIGN
18316 E. NINE MILE ROAD
EASTPORT MICHIGAN 48021
PH (586) 552-4465
FAX (586) 552-4461



HARLEY ELLIS DEVEREAUX

26913 Northwestern Hwy
Suite 200
Southfield, Michigan
48033-3476 | USA

(tel) (248) 262.1500
(fax) (248) 262.1515
harleyellisdevereaux.com

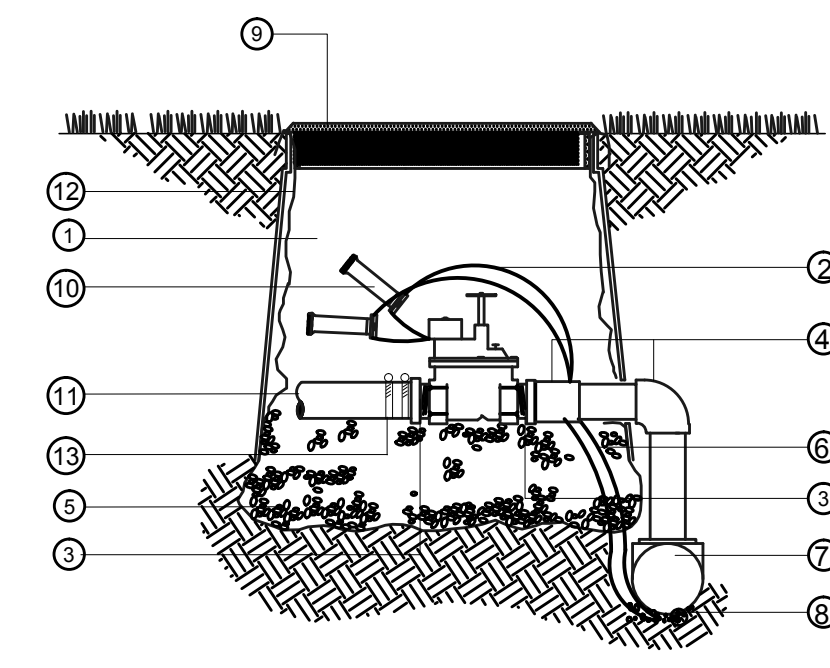
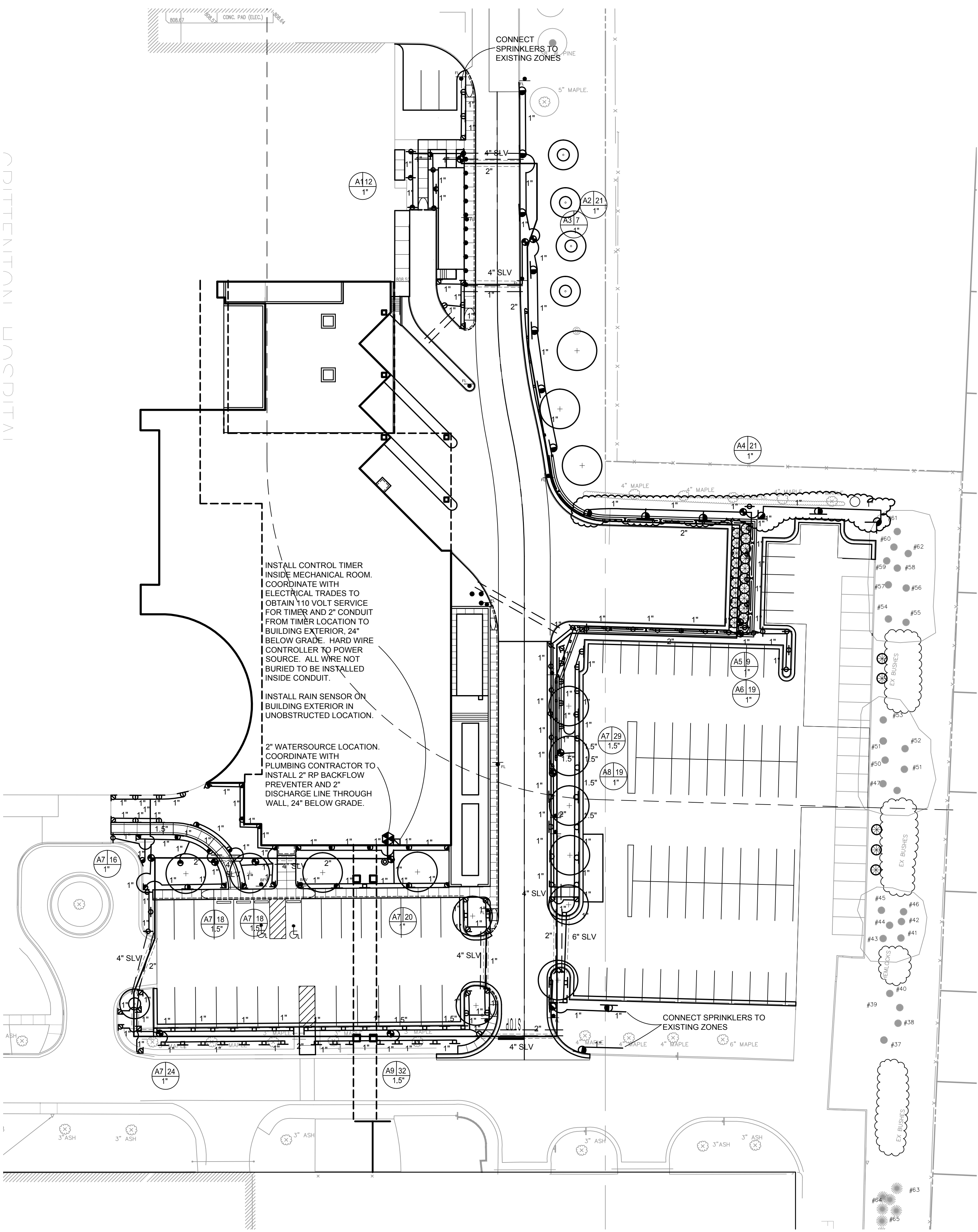
Planning
Architecture
Engineering
Interior Architecture
Landscape Architecture
Construction Services

Copyright © 2011

Project No.	2010-10062-000
Drawn	G. Graber
Checked	G. Graber
Approved	D. Axelrood

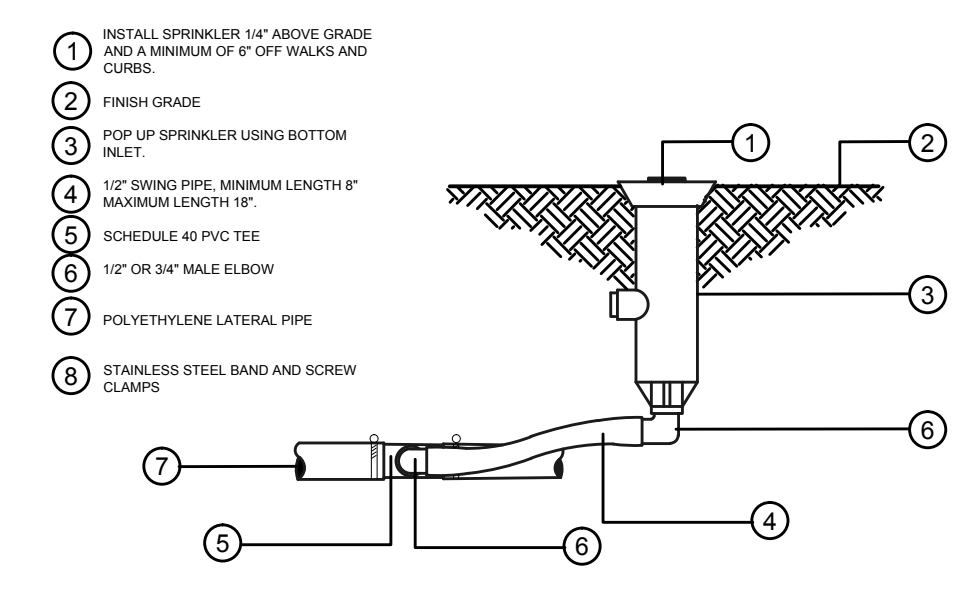
Title Irrigation Plan

Sheet No. LIP-01



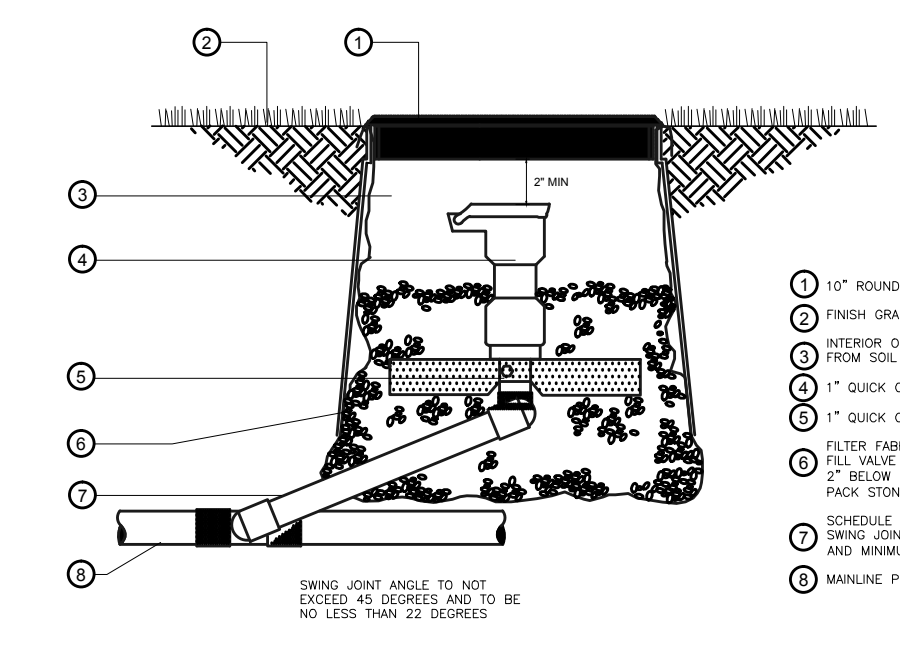
- 1 INTERIOR OF VALVE BOX TO BE FREE FROM SOIL AND DEBRIS
- 2 LEAVE COIL OF WIRE AT EACH VALVE TO ALLOW BOWTIE TO BE EXTENDED TO BOX EXTERIOR WITHOUT STRESSING WIRES AND CONNECTIONS
- 3 SCHEDULE 40 PVC NIPPLE
- 4 SCHEDULE 40 PVC FITTINGS
- 5 PEA STONE FROM BOTTOM OF VALVE TO 6" BELOW BOX
- 6 24 VOLT COMMON AND CONTROL WIRE TO VALVE. SPICE COMMON AT VALVE
- 7 MAINLINE PIPE. SEE SPECS FOR DEPTH OF BURY
- 8 CONTROL WIRE INSTALLED BENEATH MAINLINE PIPE INSIDE CONDUIT & HANDS-UP APPROVED FOR DIRECT BURY
- 9 VALVE BOX 11" x 14" VALVE BOX WITH BLACK LED
- 10 3/4" SCHEDULE 40 OR DEPT CONNECTIONS
- 11 POLYETHYLENE PIPE TO SYSTEM
- 12 FILTER FABRIC
- 13 STAINLESS STEEL BAND AND SCREW CLAMPS

AUTOMATIC CONTROL VALVE NTS



- 1 INSTALL SPRINKLER 1/4" ABOVE GRADE AND A MINIMUM OF 8" OFF WALKS AND CURBS
- 2 FINISH GRADE
- 3 POP UP SPRINKLER USING BOTTOM INLET
- 4 1/2" SWING PIPE, MINIMUM LENGTH 18" MAXIMUM LENGTH 18"
- 5 SCHEDULE 40 PVC TEE
- 6 1/2" OR 3/4" MALE ELBOW
- 7 POLYETHYLENE LATERAL PIPE
- 8 STAINLESS STEEL BAND AND SCREW CLAMPS

TWO ELBOW SWING JOINT (1/2" AND 3/4" IPS SPRINKLERS) NTS



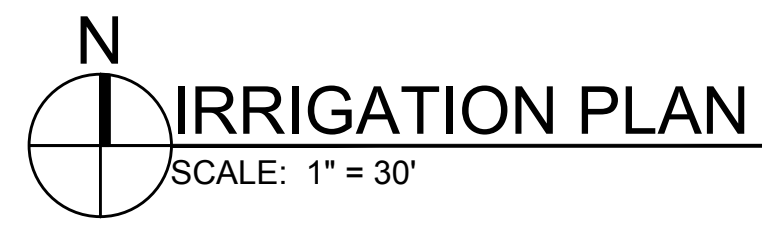
- 1 10" ROUND VALVE BOX
- 2 FINISH GRADE
- 3 INTERIOR OF BOX TO BE FREE FROM SOIL AND DEBRIS
- 4 1" QUICK COUPLING VALVE
- 5 1" QUICK COUPLER STABILIZER
- 6 FLEX FABRIC WITH PEA STONE
- 7 10" VALVE BOX WITH STONE TO 2" BELOW QUICK COUPLER TOP. PACK STONE IN 1" LIFTS
- 8 SCHEDULE 40 PRE-EMBEDDED SWING JOINT WITH O-RING SEALS AND MINIMUM 12" LAY LENGTH
- 9 MAINLINE PIPE
- 10 SWING JOINT ANGLE TO NOT EXCEED 45 DEGREES AND TO BE NO LESS THAN 22 DEGREES

THREE ELBOW SWING JOINT (QUICK COUPLING VALVE) NTS

IRRIGATION LEGEND

KEY	EQUIPMENT	BID 1	BID 2	BID 3
	4" Pop Up Spray w/ Pressure Compensation	HUNTER PROS-04-PRS30	RAINBIRD Rainbird 1804-PRS	TORO 570Z-PR4P
	15' Radius Nozzle	Pro-Spray Fixed Nozzles	MPR Nozzles	MPR Plus Nozzles
	12' Radius Nozzle	15 Series Nozzle	15 Series Nozzle	15 Series Nozzle
	10' Radius Nozzle	12 Series Nozzle	12 Series Nozzle	12 Series Nozzle
	Strip Spray Nozzle	10 Series Nozzle	10 Series Nozzle	10 Series Nozzle
	4" Pop Up Spray w/ Pressure Compensation	SS-530 Side, ES-515 End	15 SST, 15 EST	4 SST, 4 EST
	12" Pop Up Spray w/ Pressure Compensation	PROS-04-PRS40-CV	Rainbird 1804-PRS	570Z-PR4P
	Rotary Nozzle 18'-24'	MP3000	R17-24	PRN-T24 (A) or (F)
	12" Pop Up Spray w/ Pressure Compensation	PROS-12-PRS30	Rainbird 1812-PRS	570Z-XF12P
	Strip Spray Nozzle	Pro-Spray Fixed Nozzles	MPR Nozzles	MPR Plus Nozzles
	Medium Rotary Sprinkler	SS-530 Side, ES-515 End	15 SST, 15 EST	4 SST, 4 EST
	40' Radius, 3.0 GPM	I-20 Ultra Plus	Rainbird 5004 Plus	T5
	3.0 Nozzle	3.0 Nozzle	3.0 Nozzle	3.0 Nozzle
	Automatic Control Valve	ICV Series	PEB Series	P-220 Series
	Quick Coupling Valve	HQ5-RC	Rainbird 5RC	HQ-5LRC
	Control Timer	ICC-2400-M w/Solar Sync	ESP-LX Modular 24 sta w/ WS-2 Rain Sensor	CC-M-24 w/ TWRS Rain Sensor

- Timer Designation
- GPM
- Valve Size
- Sleeve - Size As Shown





Crittenton Hospital Medical Center

Cornerstone Program
Bed Tower Addition

1101 W. University Dr.
Rochester Hills, MI 48307

Date Issue
02/25/2011 Rochester Hills SPA
03/14/2011 Rochester SPA
04/14/2011 Rochester Hills SPA
04/28/2011 Rochester Hills SPA



HARLEY ELLIS DEVEREAUX

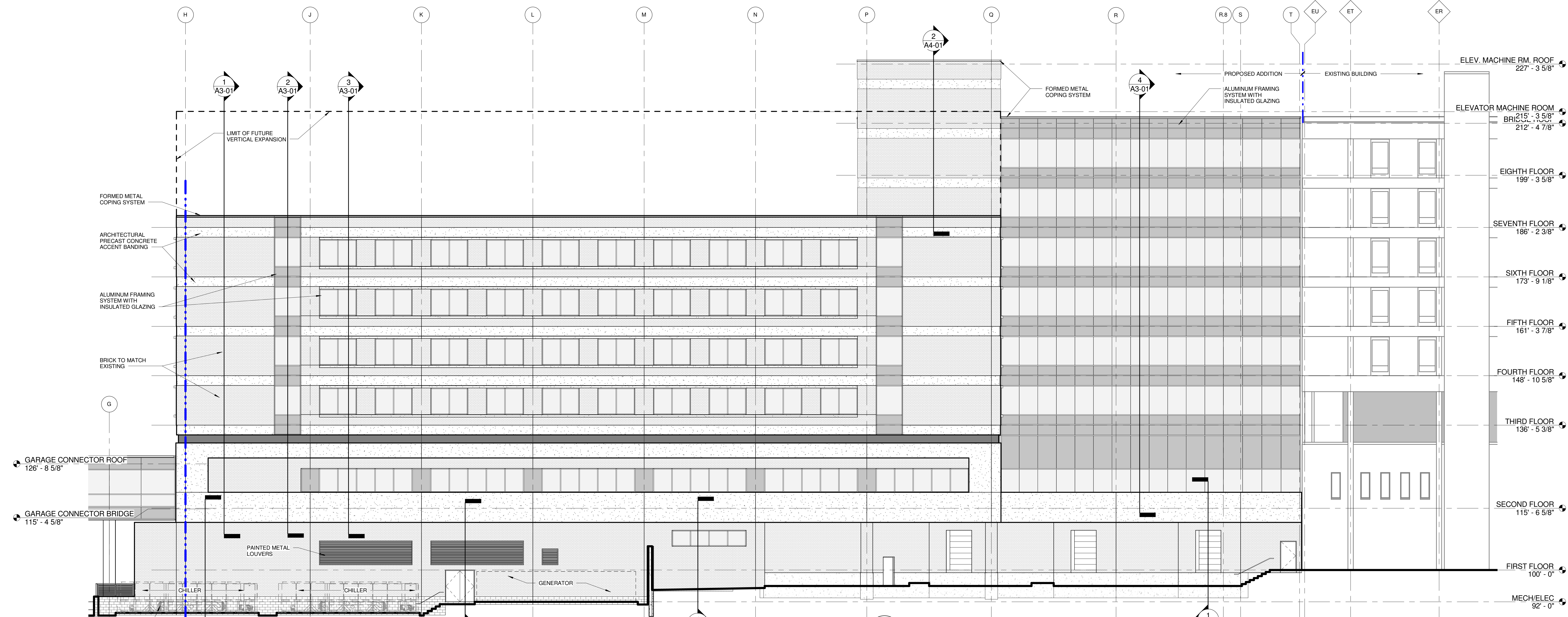
26913 Northwestern Hwy
Suite 200
Southfield, Michigan
48033-3476 USA
(tel) (248) 262.1500
(fax) (248) 262.1515
harleyellisdeveraux.com

Planning
Architecture
Engineering
Interior Architecture
Landscape Architecture
Construction Services
Copyright © 2011

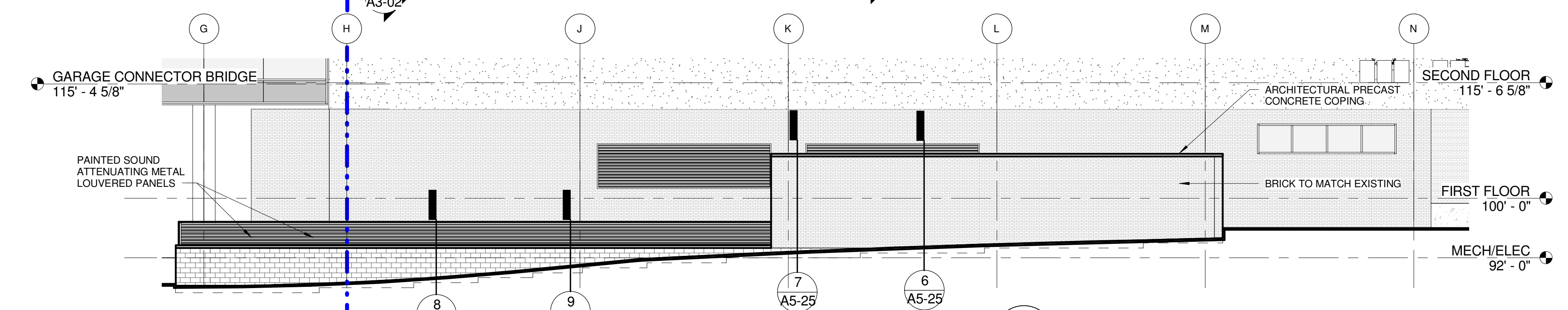
Project No. 2010-10062-000
Drawn J.Furwa
Checked J.Furwa
Approved E.Essique

Title Exterior Building Elevations

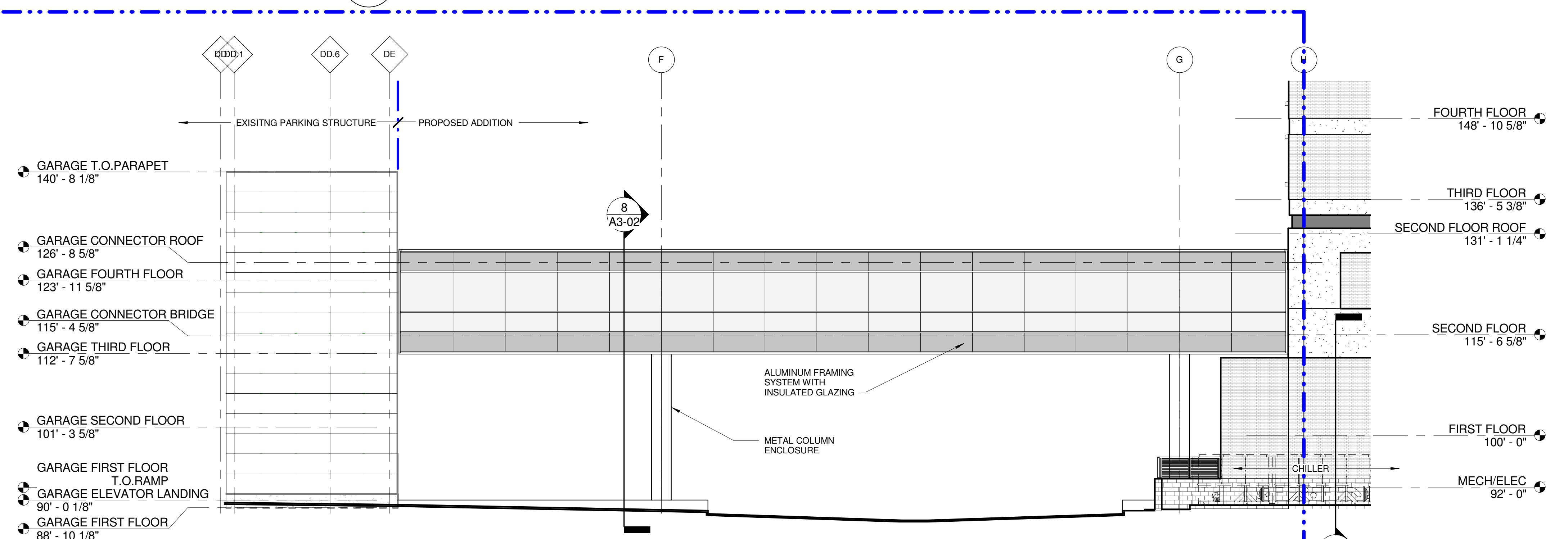
Sheet No. A2-01



1 EAST ELEVATION
SCALE: 3/32" = 1'-0"



2 PARTIAL EAST ELEVATION- SCREENWALL
SCALE: 3/32" = 1'-0"

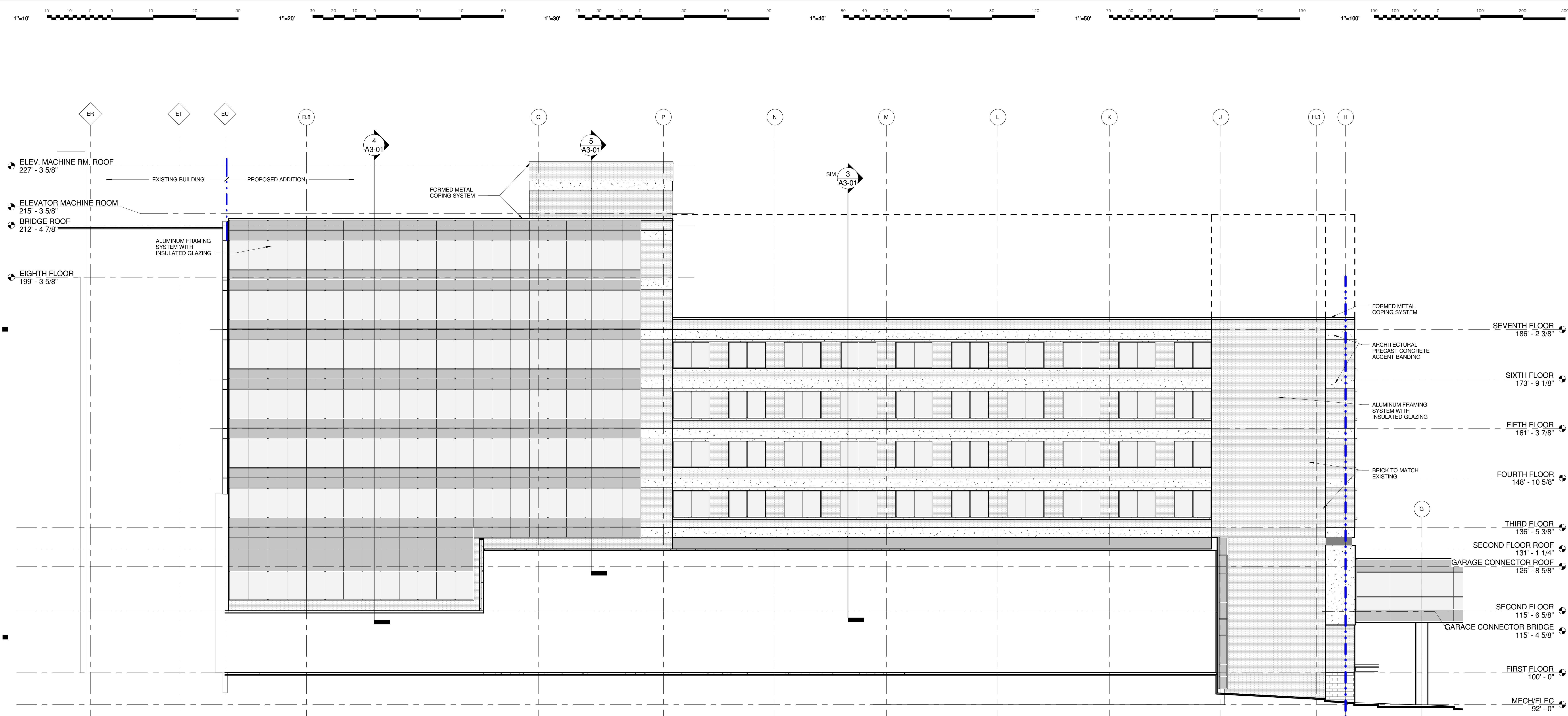


3 EAST ELEVATION- BRIDGE
SCALE: 3/32" = 1'-0"

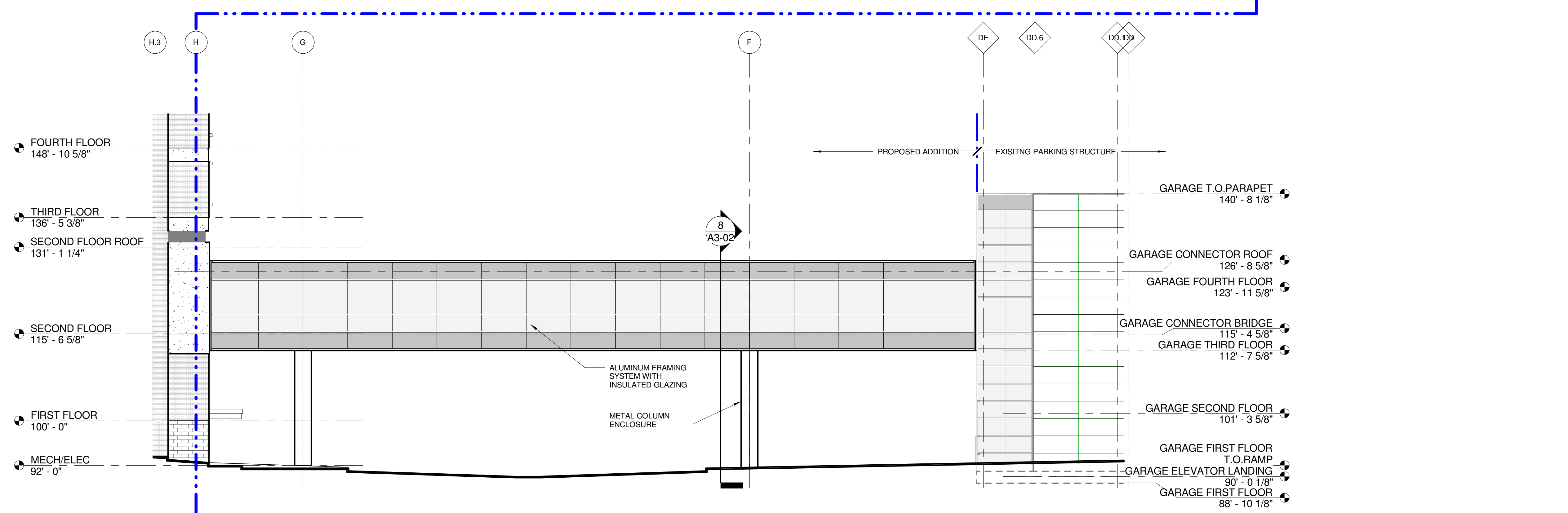
Cornerstone
Program
Bed Tower
Addition

1101 W. University Dr.
Rochester Hills, MI 48307

Date Issue
02/25/2011 Rochester Hills SPA
04/14/2011 Rochester Hills SPA
04/28/2011 Rochester Hills SPA



2 WEST ELEVATION
AP3-NE SCALE: 3/32" = 1'-0"



1 WEST ELEVATION- BRIDGE
AQ1-B1 SCALE: 3/32" = 1'-0"



**HARLEY ELLIS
DEVEREAUX**

26913 Northwestern Hwy
Suite 200
Southfield, Michigan
48033-3476 USA

(tel) (248) 262.1500
(fax) (248) 262.1515
harleyellisdevereaux.com

Planning
Architecture
Engineering
Interior Architecture
Landscape Architecture
Construction Services

Copyright © 2011

Project No. 2010-10062-000
Drawn I. Furwa
Checked J. Furwa
Approved E. Essique

Title Exterior Building
Elevations

Sheet No. A2-02

Cornerstone
Program
Bed Tower
Addition

1101 W. University Dr.
Rochester Hills, MI 48307

Date Issue
02/25/2011 Rochester Hills SPA
04/14/2011 Rochester Hills SPA
04/28/2011 Rochester Hills SPA



**HARLEY ELLIS
DEVEREAUX**

26913 Northwestern Hwy
Suite 200
Southfield, Michigan
48033-3476 | USA

(tel) (248) 262.1500
(fax) (248) 262.1515
harleyellisdevereaux.com

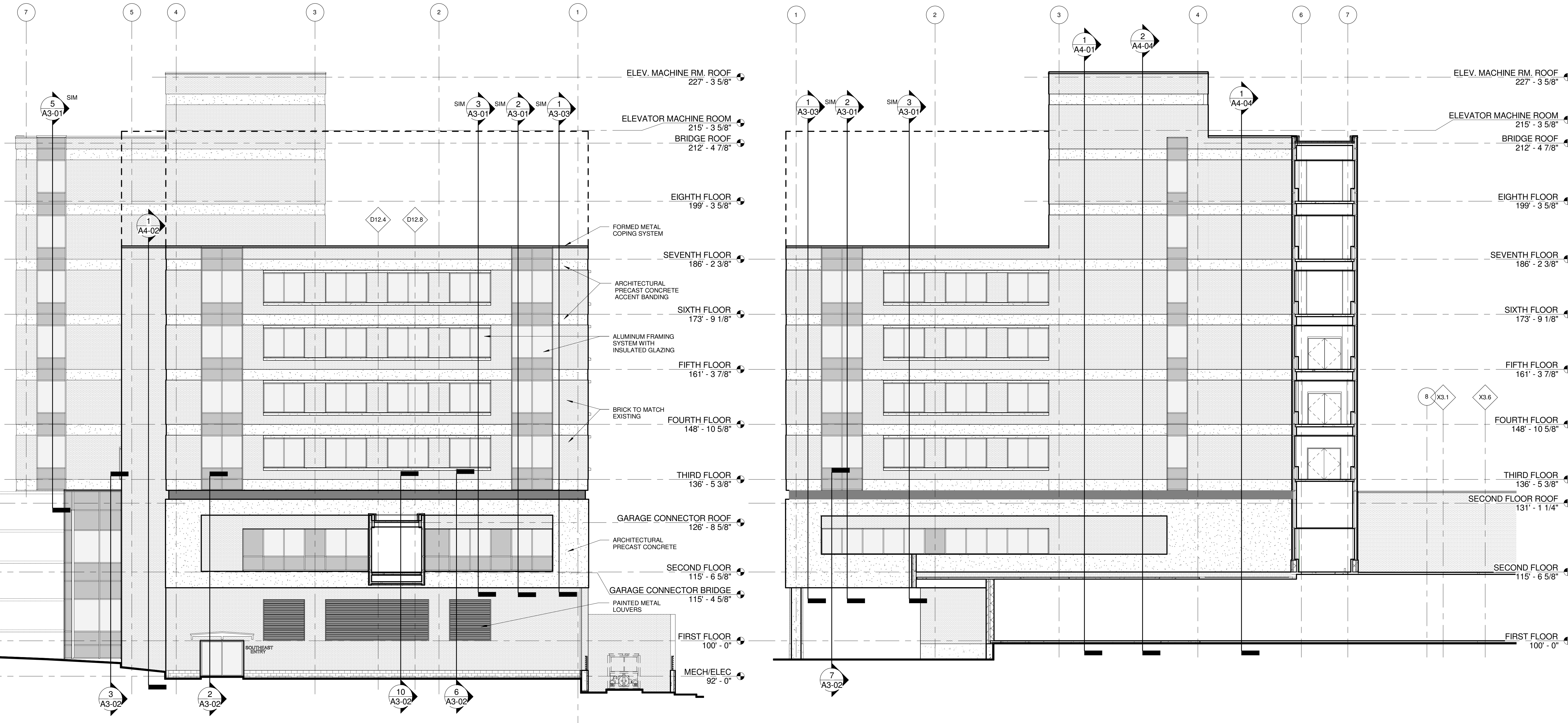
Planning
Architecture
Engineering
Interior Architecture
Landscape Architecture
Construction Services

Copyright © 2011

Project No. 2010-10062-000
Drawn J. Furwa
Checked J. Furwa
Approved E. Essique

Title Exterior Building
Elevations

Sheet No. A2-03

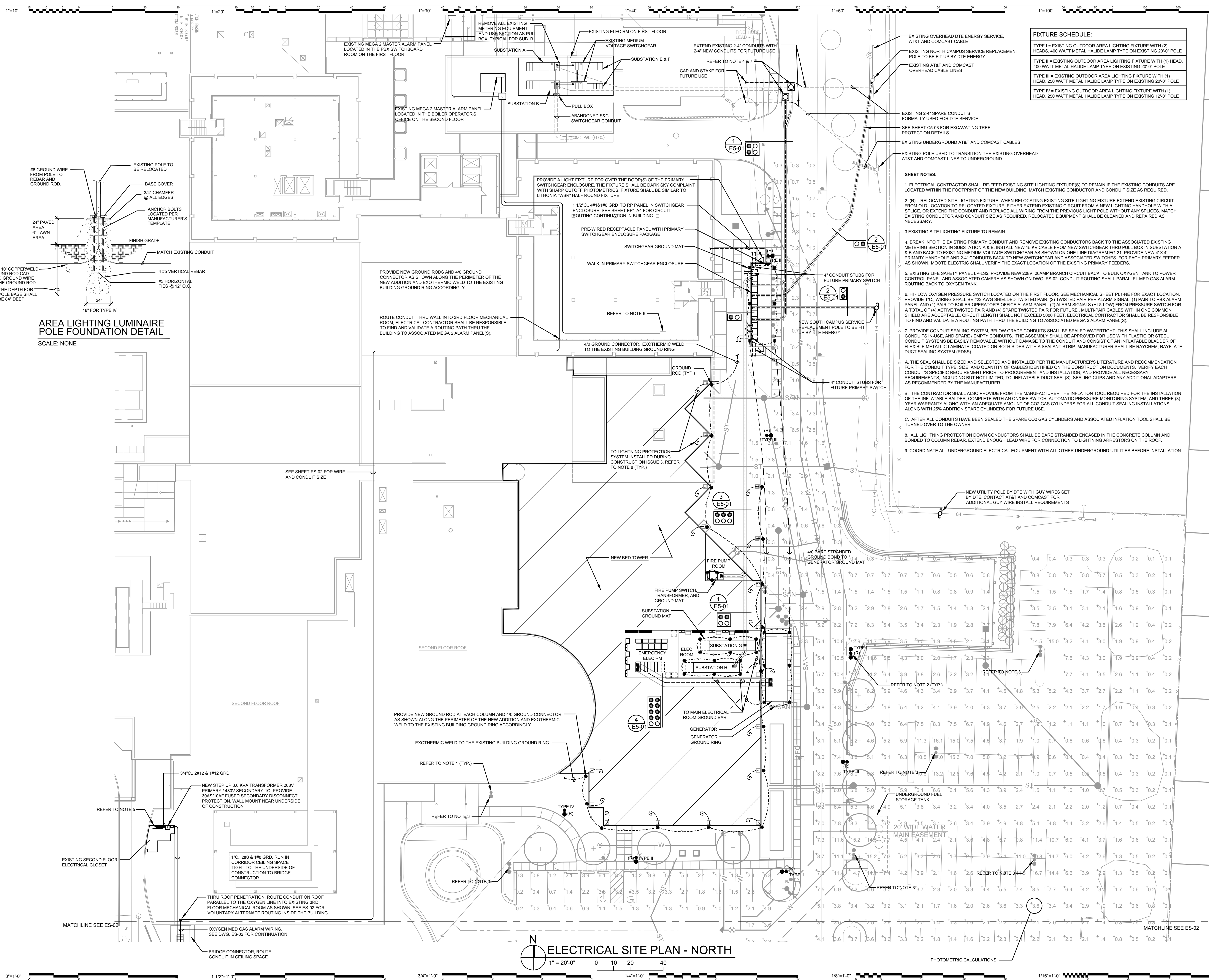


2 SOUTH ELEVATION
SCALE: 3/32" = 1'-0"

1 NORTH ELEVATION
SCALE: 3/32" = 1'-0"

**JOINT SEALANT COLOR
GENERAL NOTES**

- THE FOLLOWING COLOR OF SEALANT SHALL BE USED WHEN JOINTING OF FILLING BETWEEN MATERIALS
- A. VERTICAL CONTROL JOINTS IN MASONRY - MATCH BRICK COLOR
 - B. JOINTS BETWEEN CAST STONE & MASONRY - MATCH CAST STONE COLOR
 - C. HORIZONTAL CONTROL JOINT IN MASONRY - MATCH MORTAR COLOR
 - D. JOINTS BETWEEN CURTAIN WALL & MASONRY / CAST STONE - MATCH CURTAIN WALL COLOR
 - E. JOINTS BETWEEN GRANITE & MASONRY - MATCH MORTAR JOINT COLOR
 - F. ALL OTHER JOINTS BETWEEN SIMILAR MATERIALS - MATCH MATERIAL COLOR



FIXTURE SCHEDULE:

- TYPE I = EXISTING OUTDOOR AREA LIGHTING FIXTURE WITH (2) HEADS, 400 WATT METAL HALIDE LAMP TYPE ON EXISTING 20'-0" POLE TO BE FIT UP BY DTE ENERGY
- TYPE II = EXISTING OUTDOOR AREA LIGHTING FIXTURE WITH (1) HEAD, 400 WATT METAL HALIDE LAMP TYPE ON EXISTING 20'-0" POLE
- TYPE III = EXISTING OUTDOOR AREA LIGHTING FIXTURE WITH (1) HEAD, 250 WATT METAL HALIDE LAMP TYPE ON EXISTING 20'-0" POLE
- TYPE IV = EXISTING OUTDOOR AREA LIGHTING FIXTURE WITH (1) HEAD, 250 WATT METAL HALIDE LAMP TYPE ON EXISTING 12'-0" POLE

- SHEET NOTES:**
- ELECTRICAL CONTRACTOR SHALL RE-FEED EXISTING SITE LIGHTING FIXTURE(S) TO REMAIN IF THE EXISTING CONDUITS ARE LOCATED WITHIN THE FOOTPRINT OF THE NEW BUILDING. MATCH EXISTING CONDUCTOR AND CONDUIT SIZE AS REQUIRED.
 - (R) = RELOCATING EXISTING SITE LIGHTING FIXTURE. WHEN RELOCATING EXISTING SITE LIGHTING FIXTURE EXTEND EXISTING CIRCUIT FROM OLD LOCATION TO RELOCATED FIXTURE. EITHER EXTEND EXISTING CIRCUIT FROM A NEW LIGHTING HANDHOLE WITH A SPLICE, OR EXTEND THE CONDUIT AND REPLACE ALL WIRING FROM THE PREVIOUS LIGHT POLE WITHOUT ANY SPLICES. MATCH EXISTING CONDUCTOR AND CONDUIT SIZE AS REQUIRED. RELOCATED EQUIPMENT SHALL BE CLEANED AND REPAIRED AS NECESSARY.
 - EXISTING SITE LIGHTING FIXTURE TO REMAIN.
 - BREAK INTO THE EXISTING PRIMARY CONDUIT AND REMOVE EXISTING CONDUCTORS BACK TO THE ASSOCIATED EXISTING METERING SECTION IN SUBSTATION A & B. INSTALL NEW 15 KV CABLE FROM NEW SWITCHGEAR THRU PULL BOX IN SUBSTATION A & B AND BACK TO EXISTING MEDIUM VOLTAGE SWITCHGEAR AS SHOWN ON ONE-LINE DIAGRAM EG-21. PROVIDE NEW 4" X 4" PRIMARY HANDHOLE AND 2-4" CONDUITS BACK TO NEW SWITCHGEAR AND ASSOCIATED SWITCHES. FOR EACH PRIMARY FEEDER AS SHOWN. MUTE ELECTRIC SHALL VERIFY THE EXACT LOCATION OF THE EXISTING PRIMARY FEEDERS.
 - EXISTING LIFE SAFETY PANEL LP-L52. PROVIDE NEW 208V, 20AMP BRANCH CIRCUIT BACK TO BULK OXYGEN TANK TO POWER CONTROL PANEL AND ASSOCIATED CAMERA AS SHOWN ON DWG. E5-02. CONDUIT ROUTING SHALL PARALLEL MED GAS ALARM ROUTING BACK TO OXYGEN TANK.
 - HI - LOW OXYGEN PRESSURE SWITCH LOCATED ON THE FIRST FLOOR. SEE MECHANICAL SHEET PL1-NE FOR EXACT LOCATION. PROVIDE 1" C, WIRING SHALL BE #22 AWG SHIELDED TWISTED PAIR, (2) TWISTED PAIR PER ALARM SIGNAL, (1) PAIR TO PBX ALARM PANEL AND (1) PAIR TO BOILER OPERATORS OFFICE ALARM PANEL. (2) ALARM SIGNALS (HI & LOW) FROM PRESSURE SWITCH FOR A TOTAL OF (4) ACTIVE TWISTED PAIR AND (4) SPARE TWISTED PAIR FOR FUTURE. MULTI-PAIR CABLES WITHIN ONE COMMON SHIELD ARE ACCEPTABLE. CIRCUIT LENGTH SHALL NOT EXCEED 5000 FEET. ELECTRICAL CONTRACTOR SHALL BE RESPONSIBLE TO FIND AND VALIDATE A ROUTING PATH THRU THE BUILDING TO ASSOCIATED MEGA 2 ALARM PANEL(S).
 - PROVIDE CONDUIT SEALING SYSTEM. BELOW GRADE CONDUITS SHALL BE SEALED WATERTIGHT. THIS SHALL INCLUDE ALL CONDUITS IN USE, AND SPARE / EMPTY CONDUITS. THE ASSEMBLY SHALL BE APPROVED FOR USE WITH PLASTIC OR STEEL CONDUIT SYSTEMS BE EASILY REMOVABLE WITHOUT DAMAGE TO THE CONDUIT AND CONSIST OF AN INFLATABLE BALDNER OF FLEXIBLE METALLIC LAMINATE, COATED ON BOTH SIDES WITH A SEALANT STRIP. MANUFACTURER SHALL BE RAYCHEM, RAYFLATE DUCT SEALING SYSTEM (RDSS).
 - A. THE SEAL SHALL BE SIZED AND SELECTED AND INSTALLED PER THE MANUFACTURER'S LITERATURE AND RECOMMENDATION FOR THE CONDUIT TYPE, SIZE, AND QUANTITY OF CABLES IDENTIFIED ON THE CONSTRUCTION DOCUMENTS. VERIFY EACH CONDUIT'S SPECIFIC REQUIREMENT PRIOR TO PROCUREMENT AND INSTALLATION, AND PROVIDE ALL NECESSARY REQUIREMENTS, INCLUDING BUT NOT LIMITED TO, INFLATABLE DUCT SEAL(S), SEALING CLIPS AND ANY ADDITIONAL ADAPTERS AS RECOMMENDED BY THE MANUFACTURER.
 - B. THE CONTRACTOR SHALL ALSO PROVIDE FROM THE MANUFACTURER THE INFLATION TOOL REQUIRED FOR THE INSTALLATION OF THE INFLATABLE BALDNER, COMPLETE WITH AN ON/OFF SWITCH, AUTOMATIC PRESSURE MONITORING SYSTEM, AND THREE (3) YEAR WARRANTY ALONG WITH AN ADEQUATE AMOUNT OF CO2 GAS CYLINDERS FOR ALL CONDUIT SEALING INSTALLATIONS ALONG WITH 25% ADDITION SPARE CYLINDERS FOR FUTURE USE.
 - C. AFTER ALL CONDUITS HAVE BEEN SEALED THE SPARE CO2 GAS CYLINDERS AND ASSOCIATED INFLATION TOOL SHALL BE TURNED OVER TO THE OWNER.
 - ALL LIGHTNING PROTECTION DOWN CONDUCTORS SHALL BE BARE STRANDED ENCASED IN THE CONCRETE COLUMN AND BONDED TO COLUMN REBAR. EXTEND ENOUGH LEAD WIRE FOR CONNECTION TO LIGHTNING ARRESTORS ON THE ROOF.
 - COORDINATE ALL UNDERGROUND ELECTRICAL EQUIPMENT WITH ALL OTHER UNDERGROUND UTILITIES BEFORE INSTALLATION.

AREA LIGHTING LUMINAIRE POLE FOUNDATION DETAIL
SCALE: NONE



Crittenton Hospital Medical Center

Cornerstone Program Bed Tower Addition

1101 W. University Dr.
Rochester Hills, MI 48307

Date Issue

02/25/2011	Rochester Hills SPA
03/04/2011	Construction Issue 1
03/04/2011	Engineering Review
04/14/2011	Rochester Hills SPA
04/15/2011	Engineering Review
04/18/2011	Construction Issue 1R
04/28/2011	Rochester Hills SPA



HARLEY ELLIS DEVEREAUX

26913 Northwestern Hwy
Suite 200
Southfield, Michigan
48033-3476 | USA

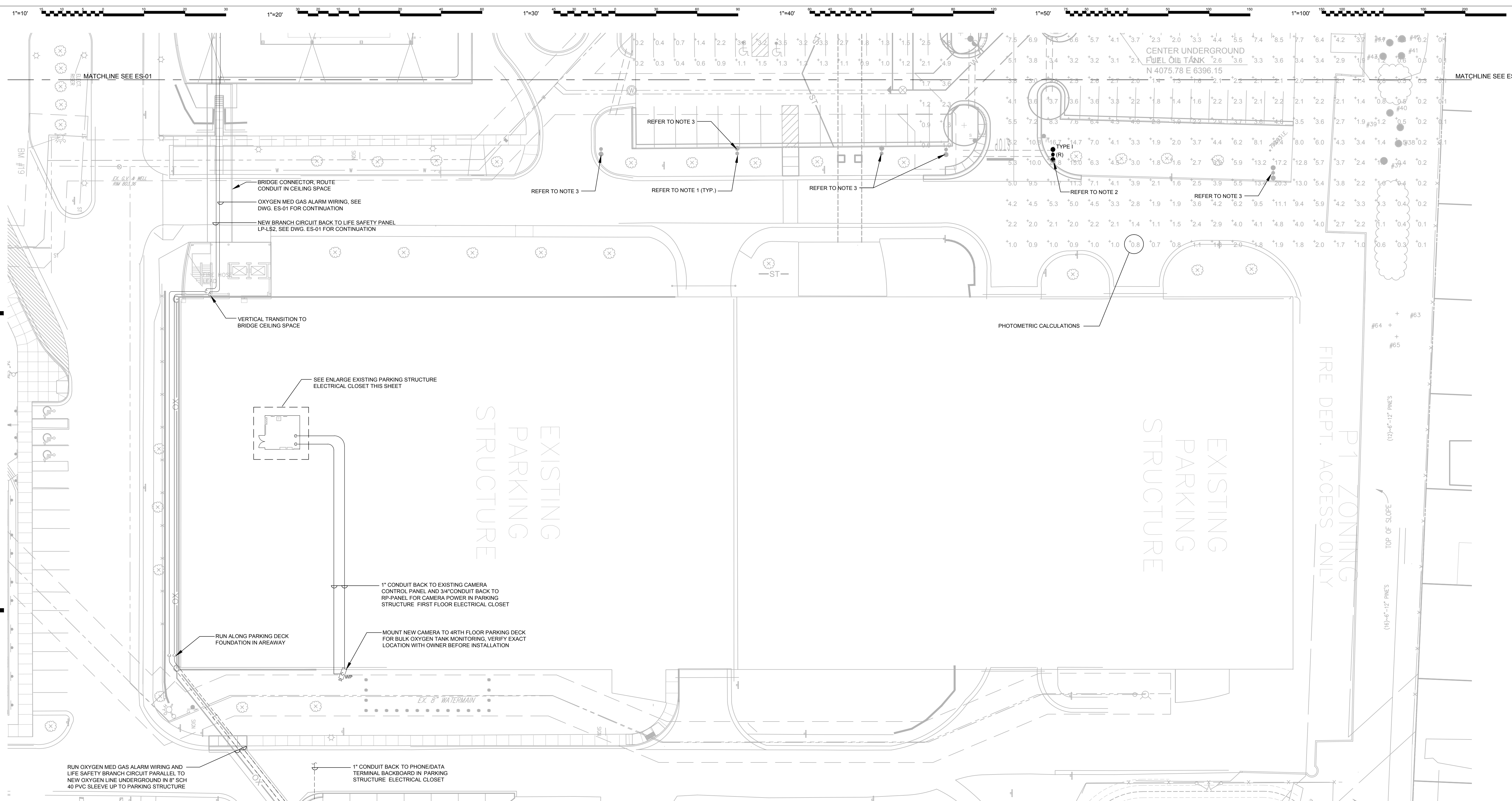
(tel) (248) 262.1500
(fax) (248) 262.1515
harleyellis@devereaux.com

Planning
Architecture
Engineering
Interior Architecture
Landscape Architecture
Construction Services
Copyright © 2011

Project No. 2010.10062-000
Drawn C. Korte
Checked R. Siebda
Approved T. Reamer

Title Electrical Site Plan - North

Sheet No. ES-01



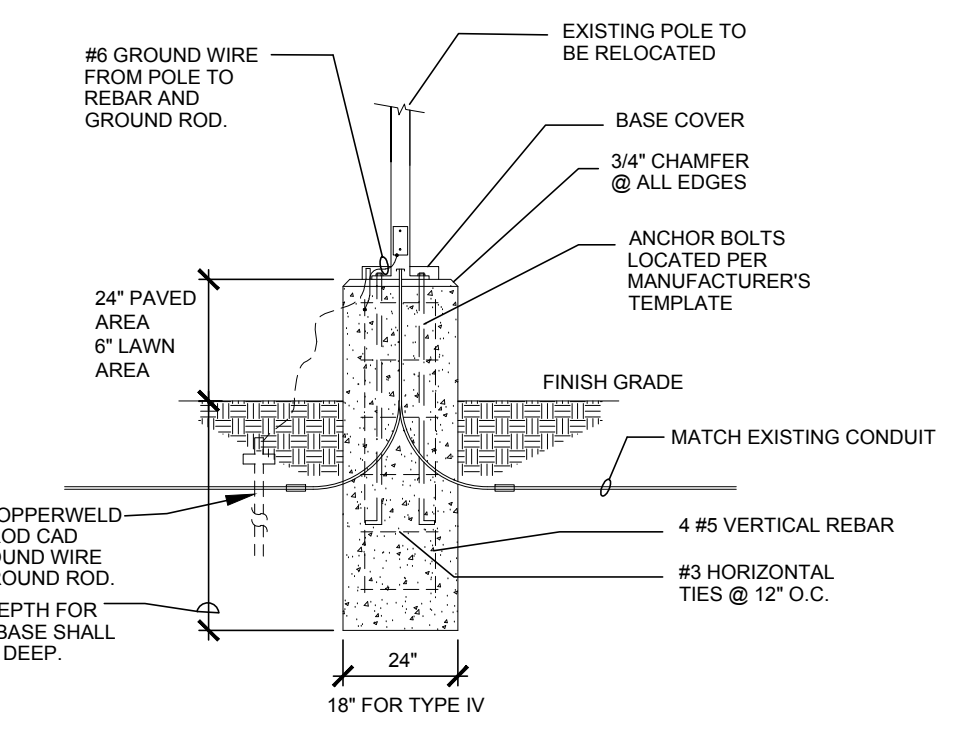
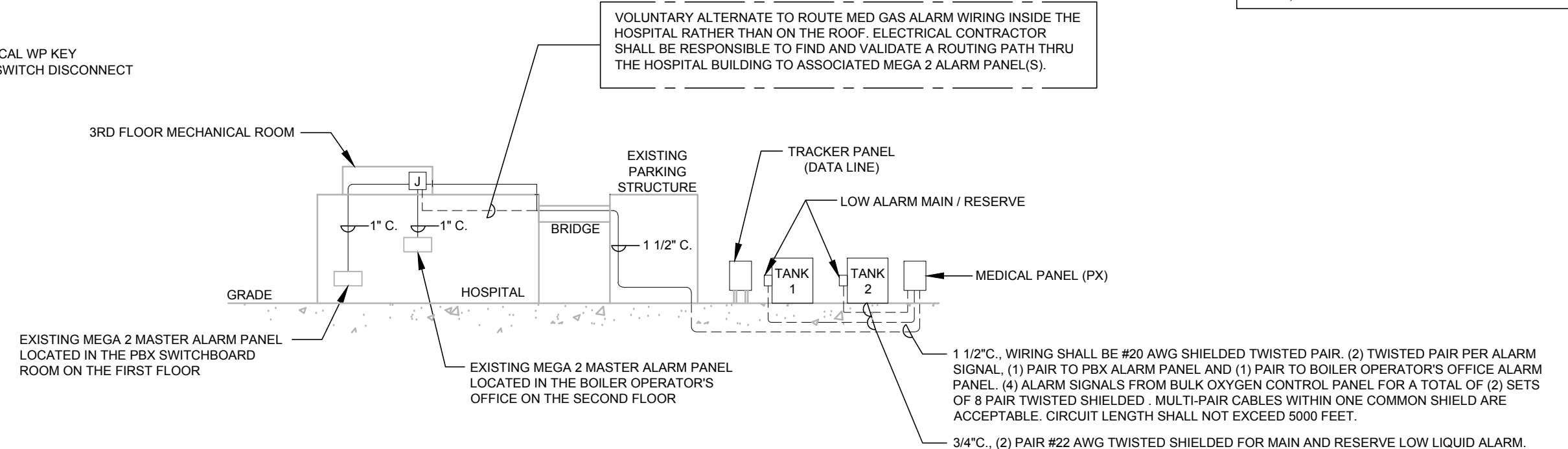
ELECTRICAL SITE PLAN - SOUTH

1" = 20'-0"

- SHEET NOTES:**
- ELECTRICAL CONTRACTOR SHALL RE-FEED EXISTING SITE LIGHTING FIXTURE(S) TO REMAIN IF THE EXISTING CONDUITS ARE LOCATED WITHIN THE FOOTPRINT OF THE NEW BUILDING. MATCH EXISTING CONDUCTOR AND CONDUIT SIZE AS REQUIRED.
 - (R) = RELOCATED SITE LIGHTING FIXTURE. EXTEND EXISTING CIRCUIT TO RELOCATED FIXTURE MATCH EXISTING CONDUCTOR AND CONDUIT SIZE AS REQUIRED. RELOCATED EQUIPMENT SHALL BE CLEANED AND REPAIRED AS NECESSARY.
 - EXISTING SITE LIGHTING FIXTURE TO REMAIN.

FIXTURE SCHEDULE:

TYPE I = EXISTING OUTDOOR AREA LIGHTING FIXTURE WITH (2) HEADS, 400 WATT METAL HALIDE LAMP TYPE ON EXISTING 20'-0" POLE



Crittenton Hospital Medical Center

Cornerstone Program Bed Tower Addition

1101 W. University Dr. Rochester Hills, MI 48307

Date: 02/25/2011
 Issue: Rochester Hills SPA
 03/04/2011 Construction Issue 1
 03/04/2011 Engineering Review
 04/14/2011 Rochester Hills SPA
 04/15/2011 Engineering Review
 04/18/2011 Construction Issue 1R
 04/28/2011 Rochester Hills SPA



HARLEY ELLIS DEVEREAUX

26913 Northwestern Hwy
 Suite 200
 Southfield, Michigan
 48033-3476 USA

(tel) (248) 262.1500
 (fax) (248) 262.1515
 harleyellis@devereaux.com

Planning
 Architecture
 Engineering
 Interior Architecture
 Landscape Architecture
 Construction Services
 Copyright © 2011

Project No. 2010.10062-000
 Drawn: C. Korte
 Checked: R. Sicha
 Approved: T. Reamer

Title: Electrical Site Plan - South

Sheet No. ES-02

