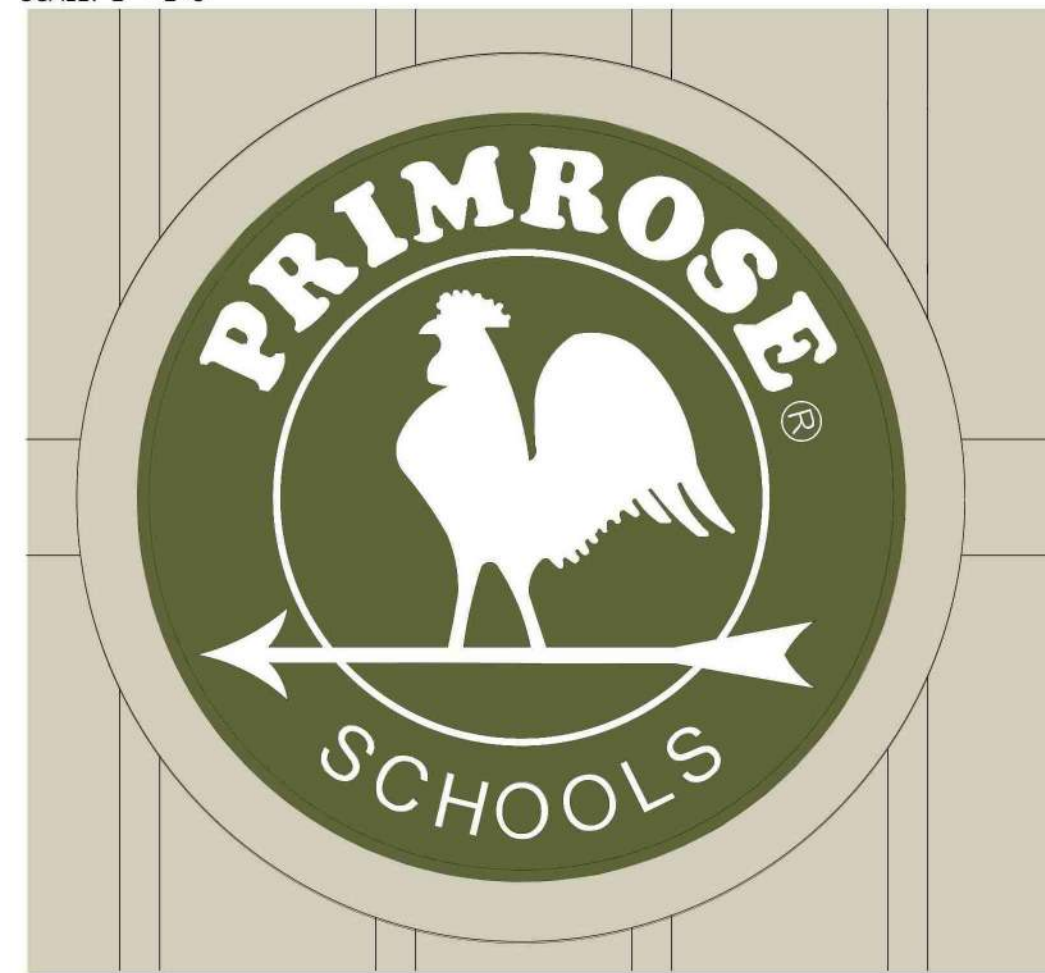


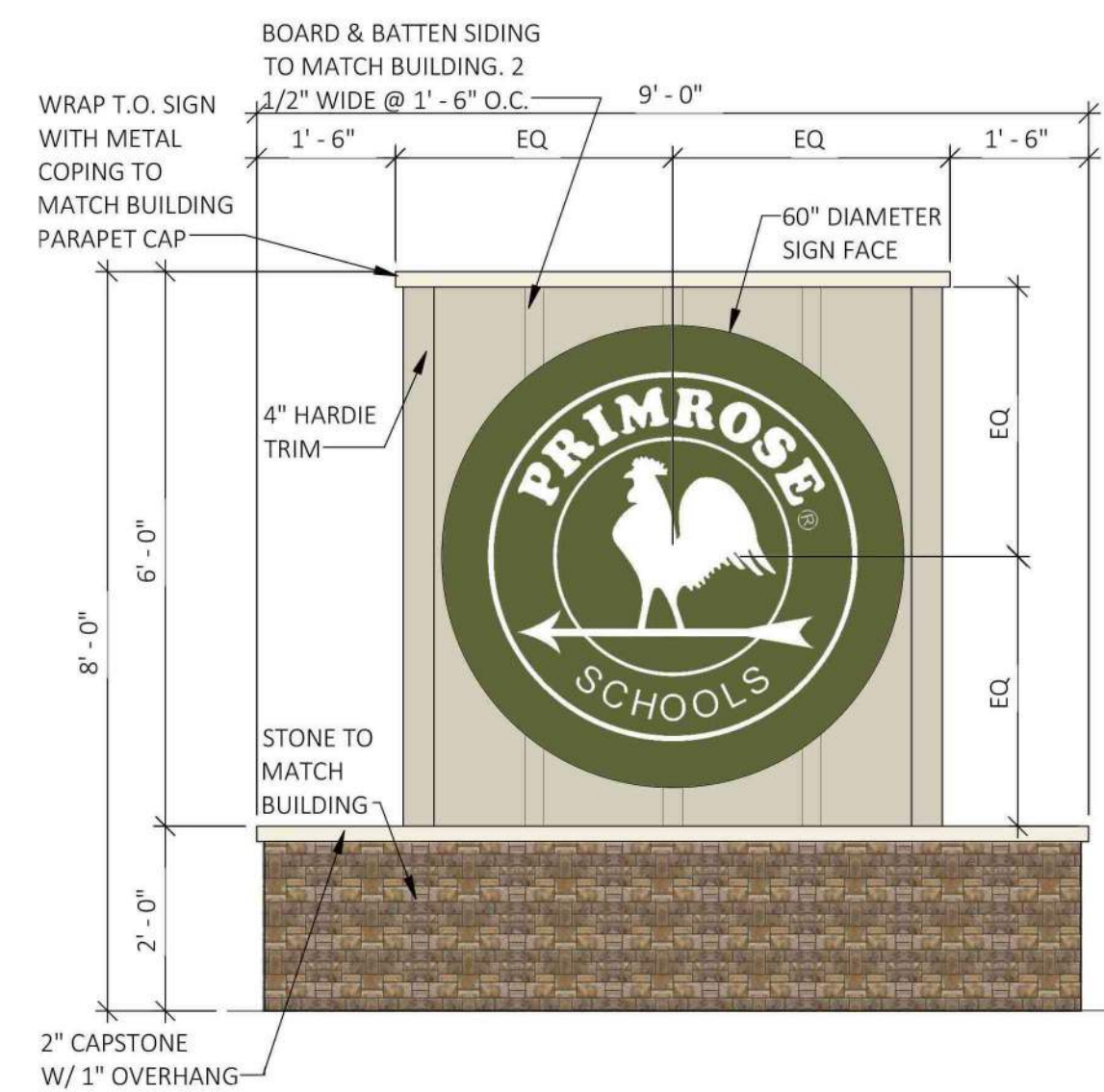
SIGN MOUNTING

SCALE: 1" = 1'-0"

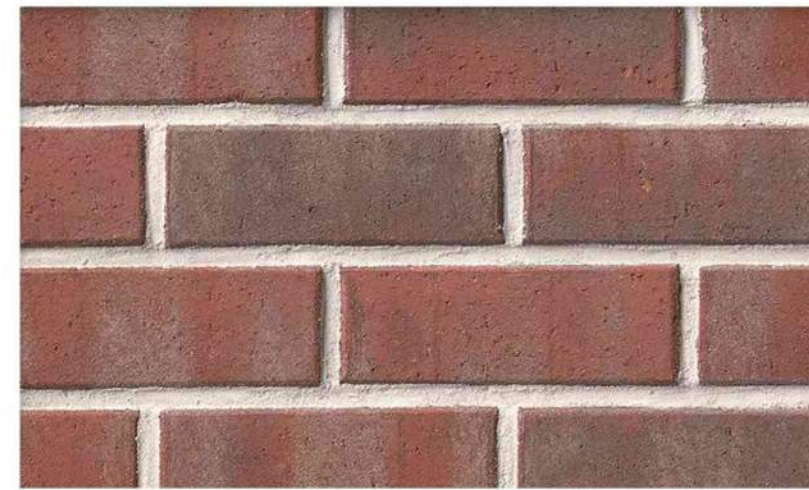


MONUMENT SIGN

SCALE: 1/2" = 1'-0"



EXTERIOR FINISH SAMPLES



BR-1



ST-1



MR-1



COBBLESTONE; TRIM-1, TRIM-2, ACC-1, ACC-2, DS-1, WD-1

ELEVATION KEYED NOTES

- 1 5/4 x 8 TRIMBOARD, PAINT TO MATCH WD - 1
- 3 5/4 x 4 TRIMBOARD, WD - 2
- 4 42" ROUND LED LIGHTED SIGN (INTERNALLY LIT). SEE 6/A2.4 FOR MOUNTING DETAIL.
- 5 LIGHTING, REFER TO ELECTRICAL DRAWINGS.
- 6 TRIMBOARD AT OFFICE & CONF ROOM WINDOWS: HORIZ TO BE 5/4 x 6, VERT TO BE 5/4 x 4, BOTH WD-3
- 7 BULLNOSE WINDOW SILL.
- 8 60" ROUND LED LIGHTED SIGN (INTERNALLY LIT). SEE 6/A2.4 FOR MOUNTING DETAIL.
- 9 CUPOLA WITH WEATHERVANE. PAINT ALL SURFACES TO MATCH "COBBLESTONE", ROOF TO BEMR - 1 REFER TO 1A/A6.3 FOR CONSTRUCTION.
- 10 ROOF LINE BEHIND PARAPET WALL.
- 11 GLAZING TO RECEIVE WINDOW FILM, TINT - 1. SEE FINISH SCHEDULE SHEET A2.2
- 12 DOWNSPOUTS TIED INTO UNDERGROUND STORM SEWER BELOW GRADE.
- 13 KNOX BOX OR APPROVED EQUAL. COORDINATE LOCATION WITH LOCAL FIRE OFFICIAL
- 14 4' - 0" HIGH SOLID VINYL FENCE WITH (2) 3' - 0" W GATES.
- 15 BEIGE ALUMINUM PLAQUE W/6" REFLECTIVE BLACK VINYL NUMBERS. PROVIDED BY 1 HOURSIGN. COORDINATE LOCATION WITH LOCAL FIRE OFFICIAL.
- 16 RTU SCREEN

EXTERIOR FINISH LEGEND

MARK	DESCRIPTION	SPECIFICATION
MR-1	METAL ROOF	BERRIDGE CEE-LOCK SYSTEM. COLOR: DARK BRONZE.
ST-1	STONE WAINSCOT	LONESTAR STONE - LIBERTY CLASSIC - AUTUMN GROUT: LIGHT BUFF COLOR: MORTAR
ST-2	STONE CAP @ WAINSCOT	STONE SILL COLOR: COBBLESTONE.
TRIM	MISC METAL TRIM & FLASHING	ANY MISC METAL FLASHING AND TRIM NOT NOTED ASTRIM-1 OR TRIM-2 SHOULD MATCH COLOR OF ADJACENT SURFACE. CONTACT ARCHITECT FOR DIRECTION AS REQ'D.
TRIM-1	MTL COPING @ PARAPET WALLS	COLOR TO MATCH JAMES HARDIE COBBLESTONE
TRIM-2	MTL TRIM @ METAL ROOF	COLOR: TO MATCH "MR-1"
WD-1	BOARD & BATTEN SIDING	HARDIE PANEL (4' X 10') & HARDIE TRIM BATTENBOARDS (2 1/2" WIDE @ 2' - 0" O.C.) FINISH: SMOOTH COLOR: COBBLESTONE (PRIMED AND FIELD PAINTED)
WD-2	TRIM (FASCIA TRIM @ METAL ROOF)	HARDIE TRIM BOARDS, 5/4 NT3 SMOOTH, VARIOUS WIDTHS AS REQUIRED (SEE ELEVATIONS). COLOR: PAINT TO MATCH MR-1 (PRIMED AND FIELD PAINTED)
ACC-1	SHUTTERS	EKENA MILLWORK: TWO BATTEN W/Z-BAR BOARD & BATTEN COMPOSITE SHUTTERS. 3' - 6" T x 1' - 6" W. SHUTTERS TO BE ORDERED PRIMED, PAINT TO MATCH "COBBLESTONE"
ACC-2	LOUVERS	AMERICAN LOUVER & VENT COMPANY, TGV81260 OR APPROVED EQUAL. COLOR: COBBLESTONE
WV-1	WEATHER VANE	LARGE COPPER ROOSTER WEATHERVANE. SEE 1A/A6.3 FOR ADDITIONAL INFORMATION.
DS - 1	SCUPPERS, DOWNSPOUTS @ GABLED ROOF	COLOR: "COBBLESTONE"; 6" GUTTERS AND DOWNSPOUTS U.N.O.
DS - 2	GUTTERS ALONG METAL ROOF	COLOR: TO MATCH "MR - 1"
DR - 1	HALF LITE DOORS	EXTERIOR INSULATED METAL HALF LITE DOOR; COLOR (INTERIOR & EXTERIOR): WHITE. SEE DOOR SCHEDULE FOR ADDITIONAL INFORMATION.
DR - 2	FULL LITE DOOR	EXTERIOR INSULATED METAL FULL LITE DOOR; COLOR (INTERIOR & EXTERIOR): WHITE. SEE DOOR SCHEDULE FOR ADDITIONAL INFORMATION.
WIN - 1	VINYL WINDOWS	ANDERSEN: SILVERLINE 2200 SERIES. COLOR: WHITE. SEE WINDOW SCHEDULE.
WIN - 2	VINYL WINDOWS (@ OFFICE)	ANDERSEN: 100 SERIES. COLOR: WHITE. SEE WINDOW SCHEDULE
BR-1	BRICK	COLUMBUS BRICK; COLOR VIRGINIAN MODULAR
BR-2	SOLDIER COURSE	COLUMBUS BRICK; COLOR VIRGINIAN MODULAR

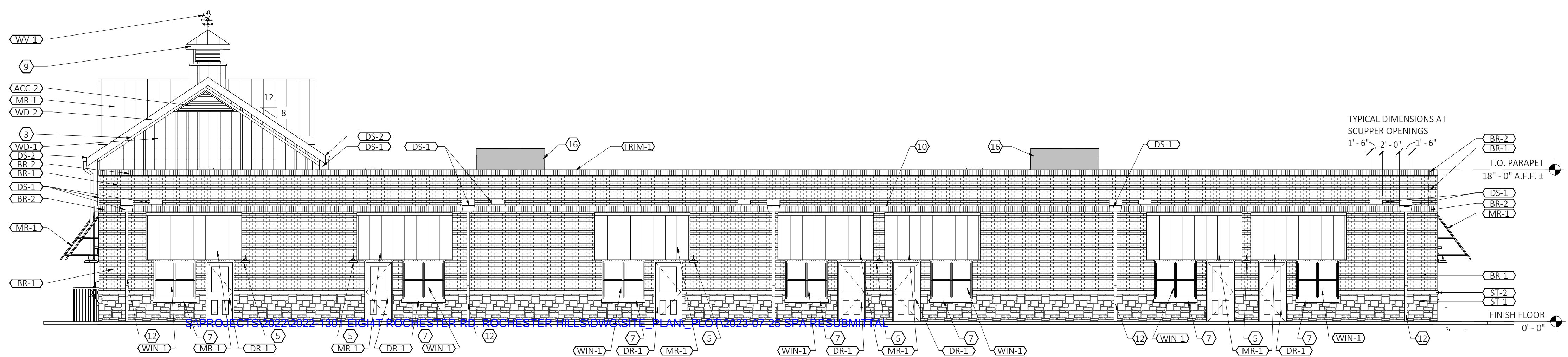


PROPOSED BUILDING FOR:
PRIMROSE SCHOOL
 FRANCHISING COMPANY
 3200 WINDY HILL ROAD, SUITE 1200E
 ATLANTA, GEORGIA 30339-5640

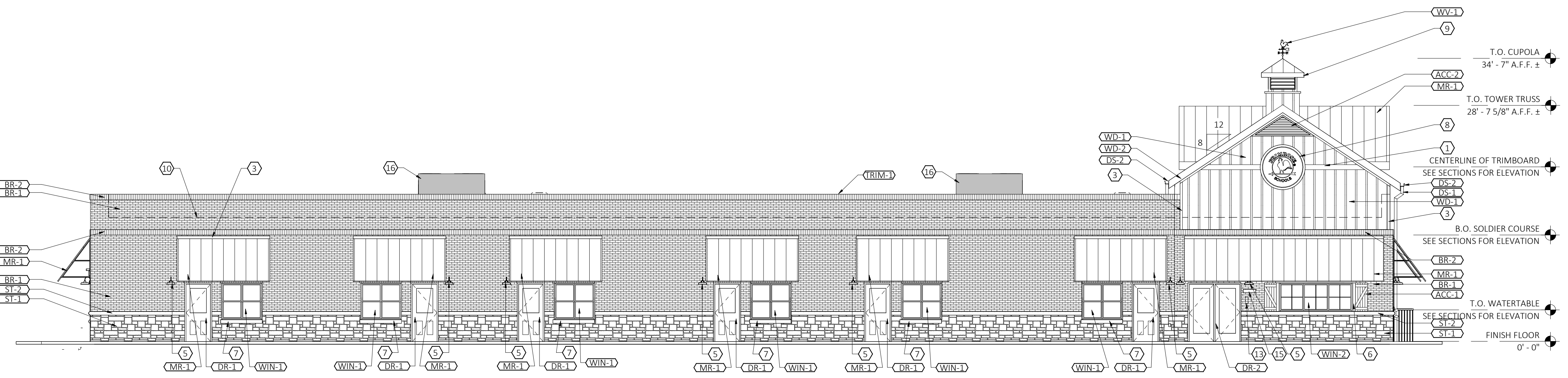
PRIMROSE SCHOOL
 1421 S. ROCHESTER RD.
 ROCHESTER HILLS, MI



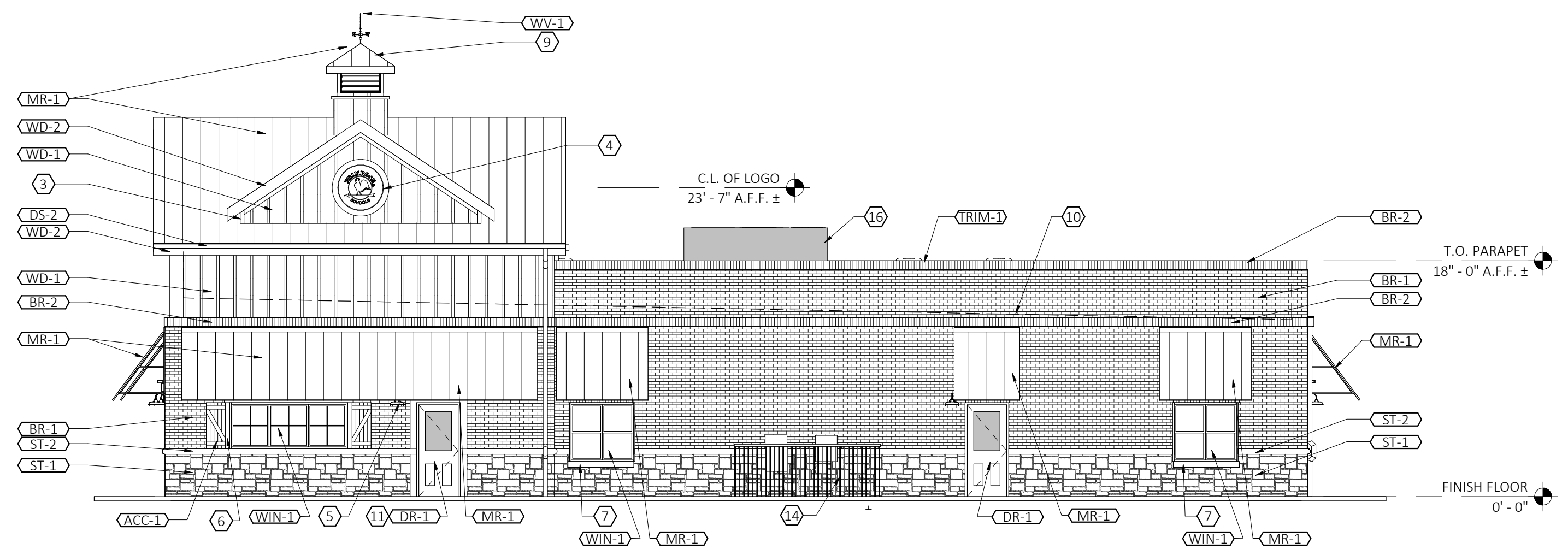
12 SUNNEN DR., SUITE 100
 ST. LOUIS, MO 63143
 DATE: 07/25/23



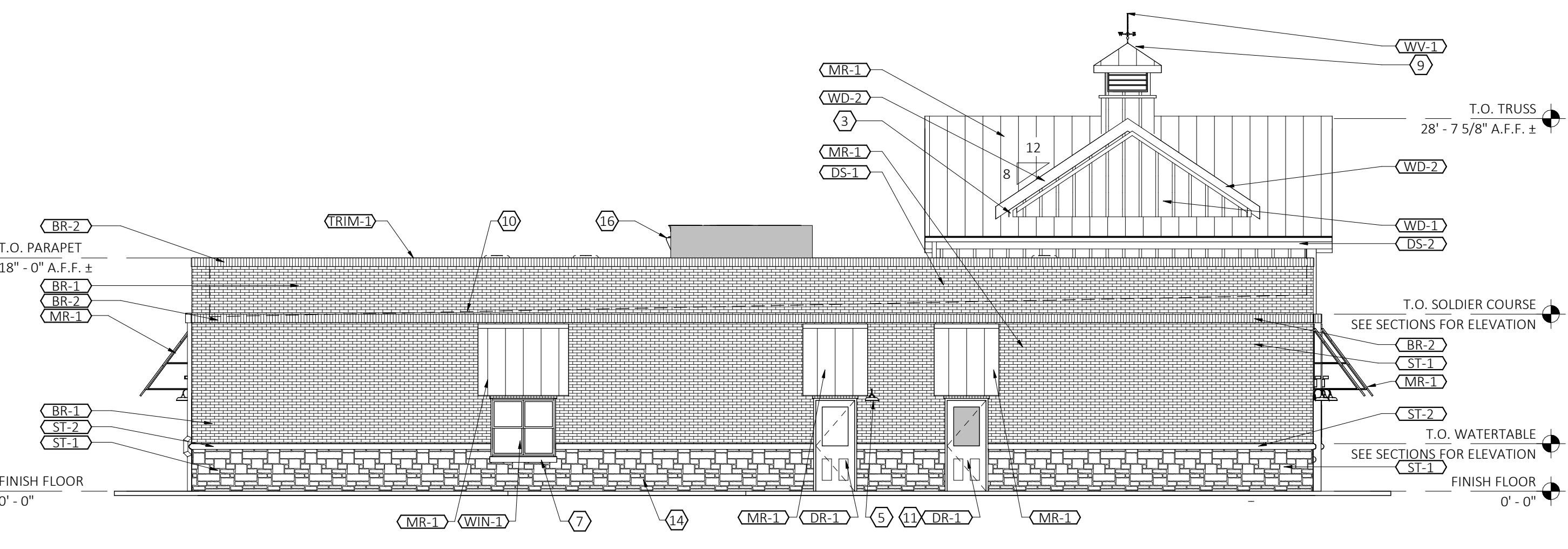
1 SOUTH ELEVATION
A4.0 SCALE: 1/8" = 1'-0"



2 NORTH ELEVATION
A4.0 SCALE: 1/8" = 1'-0"



3 WEST ELEVATION
A4.0 SCALE: 1/8" = 1'-0"



4 EAST ELEVATION
A4.0 SCALE: 1/8" = 1'-0"

ELEVATION KEYED NOTES

- 1 5/4 x 8 TRIMBOARD, PAINT TO MATCH WD - 1
- 2 NOT USED
- 3 5/4 x 4 TRIMBOARD, WD - 2
- 4 42" ROUND LED LIGHTED SIGN (INTERNALLY LIT). SEE 6/A2.4 FOR MOUNTING DETAIL.
- 5 LIGHTING, REFER TO ELECTRICAL DRAWINGS.
- 6 VERTICAL TRIMBOARD AT OFFICE WINDOW TO BE 5/4 x 4, WD-1
- 7 BULLNOSE STONE WINDOW SILL
- 8 60" ROUND LED LIGHTED SIGN (INTERNALLY LIT). SEE 6/A2.4 FOR MOUNTING DETAIL
- 9 CUPOLA WITH WEATHERVANE. PAINT ALL SURFACES TO MATCH "COBBLESTONE", ROOF TO BE MR - 1 REFER TO 1A/A6.3 FOR CONSTRUCTION.
- 10 ROOF LINE BEHIND PARAPET WALL.
- 11 GLAZING TO RECEIVE WINDOW FILM, TINT - 1. SEE FINISH SCHEDULE SHEET A2.2
- 12 DOWNSPOUTS TIED INTO UNDERGROUND STORM SEWER BELOW GRADE.
- 13 KNOX BOX OR APPROVED EQUAL. COORDINATE LOCATION WITH LOCAL FIRE OFFICIAL
- 14 4' - 0" HIGH SOLID VINYL FENCE WITH 3' - 0" W GATE(S). COLOR: TAN
- 15 BEIGE ALUMINUM PLAQUE W/6" REFLECTIVE BLACK VINYL NUMBERS. PROVIDED BY 1 HOUR SIGN. COORDINATE LOCATION WITH LOCAL FIRE OFFICIAL.
- 16 RTU SCREEN. SEE NOTE BELOW***

EXTERIOR FINISH LEGEND

MARK	DESCRIPTION	SPECIFICATION
MR-1	METAL ROOF	BERRIDGE CEE-LOCK SYSTEM. COLOR: DARK BRONZE.
ST-1	STONE WAINSCOT	LONESTAR STONE - LIBERTY CLASSIC - AUTUMN. GROUT: LIGHT BUFF COLOR.
ST-2	STONE CAP & WINDOW SILL	PRECAST BULLNOSE STONE SILL. COLOR: COBBLESTONE
TRIM	MISC METAL TRIM & FLASHING	ANY MISC METAL FLASHING AND TRIM NOT NOTED AS TRIM-1 OR TRIM-2 SHOULD MATCH COLOR OF ADJACENT SURFACE. CONTACT ARCHITECT FOR DIRECTION AS REQ'D.
TRIM-1	MTL COPING @ PARAPET WALLS	COLOR TO MATCH JAMES HARDIE "COBBLESTONE"
TRIM-2	MTL TRIM @ METAL ROOF	COLOR: TO MATCH "MR-1"
WD-1	BOARD & BATTEN SIDING	HARDIE PANEL (4' X 10') & HARDIE TRIM BATTEN BOARDS (2 1/2" WIDE @ 2' - 0" O.C.) FINISH: SMOOTH. COLOR: COBBLESTONE
WD-2	FASCIA TRIM @ METAL ROOF	COLOR: TO MATCH MR-1
ACC-1	SHUTTERS	EKENA MILLWORK: TWO BATTEN W/Z-BAR BOARD & BATTEN COMPOSITE SHUTTERS. 3' - 6" T x 1' - 6" W. SHUTTERS TO BE ORDERED PRIMED, PAINT TO MATCH "COBBLESTONE"
ACC-2	LOUVERS	AMERICAN LOUVER & VENT COMPANY, TG81260 OR APPROVED EQUAL. COLOR: TO MATCH "COBBLESTONE"
WV-1	WEATHER VANE	LARGE COPPER ROOSTER WEATHERVANE. SEE 1A/A6.3 FOR ADDITIONAL INFORMATION.
DS-1	SCUPPERS, DOWNSPOUTS @ GABLED ROOF	COLOR: TO MATCH "COBBLESTONE". 6" GUTTERS AND DOWN SPOUTS U.N.O.
DS-2	GUTTERS ALONG METAL ROOF	COLOR: TO MATCH "MR - 1"
DR-1	HALF LITE DOORS	EXTERIOR INSULATED METAL HALF LITE DOOR; COLOR (INTERIOR & EXTERIOR); WHITE. SEE DOOR SCHEDULE FOR ADDITIONAL INFORMATION.
DR-2	FULL LITE DOOR	EXTERIOR INSULATED METAL FULL LITE DOOR ; COLOR (INTERIOR & EXTERIOR); WHITE. SEE DOOR SCHEDULE FOR ADDITIONAL INFORMATION.
WIN - 1	VINYL WINDOWS	ANDERSEN: SILVERLINE 2200 SERIES. COLOR: WHITE.
WIN - 2	VINYL WINDOWS (@ OFFICE)	ANDERSEN: 100 SERIES. COLOR: WHITE. SEE WINDOW SCHEDULE
BR-1	BRICK	COLUMBUS BRICK; COLOR: VIRGINIAN MODULAR
BR-2	BRICK SOLDIER COURSE	COLUMBUS BRICK; COLOR: VIRGINIAN MODULAR

*** ALL SIGNS MUST MEET THE REQUIREMENTS OF THE CITY AND BE APPROVED UNDER SEPARATE PERMITS ISSUED BY THE BUILDING DEPARTMENT ***

*** ALL ROOFTOP MECHANICAL EQUIPMENT WILL BE SCREENED UTILIZING RTU SCREENS. SCREENS WILL BE AT A MINIMUM AS TALL AS THE TALLEST PIECE OF MECHANICAL EQUIPMENT. SCREENS TO BE PAINTED TO MATCH SIDING COLOR ON BUILDING.***

PRIMROSE SCHOOL
1421 S. ROCHESTER RD
ROCHESTER HILLS, MI



PRIMROSE SCHOOL FRANCHISING COMPANY
3300 WINDY HILL ROAD, SUITE 1200 E
ATLANTA, GEORGIA 30339-5640

THESE DRAWINGS AND THE DESIGN REPRESENTED HEREBY ARE THE EXCLUSIVE PROPERTY OF PRIMROSE SCHOOL FRANCHISING CO. REPRODUCTION OR ANY USE OF THESE DRAWINGS OTHER THAN FOR THE PROJECT INTENDED WITHOUT THE EXPRESS WRITTEN CONSENT OF PRIMROSE SCHOOL FRANCHISING CO. IS PROHIBITED. ANY UNAUTHORIZED USE WILL BE SUBJECT TO LEGAL ACTION.

CONSTR. DOC. & REVISIONS

Date	Description

No. _____

NOT FOR CONSTRUCTION
Professional of Record:

Drawn/Checked DSC / AKB
Project Number 2302925
Bid Date --/--
Permit Date --/--
For Construction --/--

EXTERIOR ELEVATIONS

A4.0
7/25/23



EAST ELEVATION - LEFT



PROPOSED BUILDING FOR:
PRIMROSE SCHOOL
FRANCHISING COMPANY
 3200 WINDY HILL ROAD, SUITE 1200E
 ATLANTA, GEORGIA 30339-5640

PRIMROSE SCHOOL
 1421 S. ROCHESTER RD.
 ROCHESTER HILLS, MI

CASCO

12 SUNNEN DR., SUITE 100
 ST. LOUIS, MO 63143
 DATE: 07/25/23



ALL SIGNS MUST MEET THE REQUIREMENTS OF THE CITY AND BE APPROVED UNDER SEPARATE PERMITS ISSUED BY THE BUILDING DEPARTMENT

ALL ROOFTOP MECHANICAL EQUIPMENT WILL BE SCREENED UTILIZING RTU SCREENS. SCREENS WILL BE AT A MINIMUM AS TALL AS THE TALLEST PIECE OF MECHANICAL EQUIPMENT. SCREENS TO BE PAINTED TO MATCH SIDING COLOR ON BUILDING.

NORTH ELEVATION - FRONT



PROPOSED BUILDING FOR:
PRIMROSE SCHOOL
FRANCHISING COMPANY
 3200 WINDY HILL ROAD, SUITE 1200E
 ATLANTA, GEORGIA 30339-5640

PRIMROSE SCHOOL
 1421 S. ROCHESTER RD.
 ROCHESTER HILLS, MI



12 SUNNEN DR., SUITE 100
 ST. LOUIS, MO 63143
 DATE: 07/25/23



*** ALL SIGNS MUST MEET THE REQUIREMENTS OF THE CITY AND BE APPROVED UNDER SEPARATE PERMITS ISSUED BY THE BUILDING DEPARTMENT ***

*** ALL ROOFTOP MECHANICAL EQUIPMENT WILL BE SCREENED UTILIZING RTU SCREENS. SCREENS WILL BE AT A MINIMUM AS TALL AS THE TALLEST PIECE OF MECHANICAL EQUIPMENT. SCREENS TO BE PAINTED TO MATCH SIDING COLOR ON BUILDING. ***

TYPICAL DIMENSIONS AT SCUPPER OPENINGS
 1'-2" 2'-0" 1'-2"

T.O. PARAPET
 18"-0" A.F.F. ±

CENTERLINE OF TRIMBOARD
 SEE SECTION FOR ELEVATION

FINISH FLOOR
 0'-0"

SOUTH ELEVATION - REAR

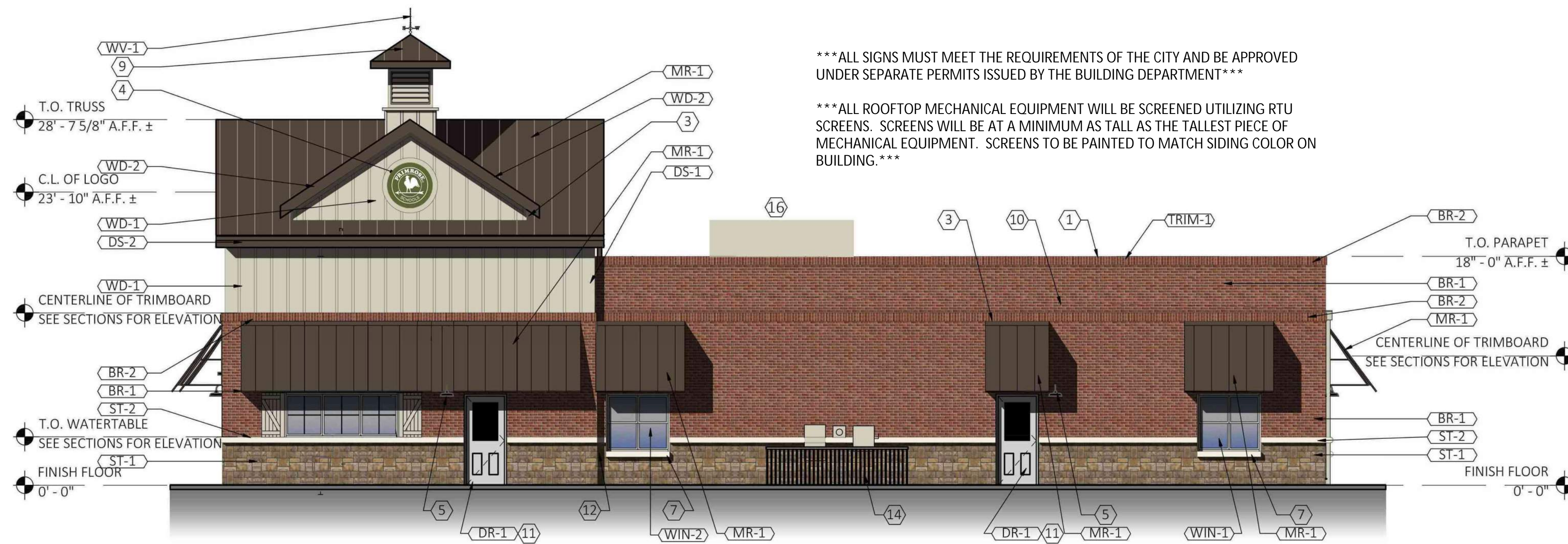


PROPOSED BUILDING FOR:
PRIMROSE SCHOOL
FRANCHISING COMPANY
 3200 WINDY HILL ROAD, SUITE 1200E
 ATLANTA, GEORGIA 30339-5640

PRIMROSE SCHOOL
 1421 S. ROCHESTER RD.
 ROCHESTER HILLS, MI



12 SUNNEN DR., SUITE 100
 ST. LOUIS, MO 63143
 DATE: 07/25/23



ALL SIGNS MUST MEET THE REQUIREMENTS OF THE CITY AND BE APPROVED UNDER SEPARATE PERMITS ISSUED BY THE BUILDING DEPARTMENT

ALL ROOFTOP MECHANICAL EQUIPMENT WILL BE SCREENED UTILIZING RTU SCREENS. SCREENS WILL BE AT A MINIMUM AS TALL AS THE TALLEST PIECE OF MECHANICAL EQUIPMENT. SCREENS TO BE PAINTED TO MATCH SIDING COLOR ON BUILDING.

WEST ELEVATION - RIGHT



PROPOSED BUILDING FOR:
PRIMROSE SCHOOL
FRANCHISING COMPANY
 3200 WINDY HILL ROAD, SUITE 1200E
 ATLANTA, GEORGIA 30339-5640

PRIMROSE SCHOOL
 1421 S. ROCHESTER RD.
 ROCHESTER HILLS, MI



12 SUNNEN DR., SUITE 100
 ST. LOUIS, MO 63143
 DATE: 07/25/23