

ALL EXTERIOR DIMENSIONS ARE TO MASONRY UNITS / MASONRY OPENINGS, TYP.

PROVIDE MASONRY CONTROL JOINTS PER MANUFACTURER'S INSTRUCTIONS

PROVIDE HORIZONTAL JOINT REINFORCING AT 16" O.C. MIN. W/ 7 BAR SIZE TYP. LAP MIN. 12", TYP.

PROVIDE (2) L4 x 3 1/2 x 5/16" LINTEL OVER 36"x24" LOUVERS AND @ LONG WALL OF BUILDING

WINDOW TYPES SCHEDULE

W1	10'-0" WIDE BY 10'-0" TALL ALUMINUM STOREFRONT WINDOW HEAD HEIGHT = 10'-8" A.F.F.
W2	6'-8" WIDE BY 10'-8" TALL ALUMINUM STOREFRONT WINDOW HEAD HEIGHT = 10'-8" A.F.F.
ALL GLAZING SHALL HAVE A SHGC OF .40 MIN.	

CAR WASH GENERAL NOTES

- CENTERLINE OF EQUIPMENT DOES NOT EQUAL CENTERLINE OF TRENCH
- CENTERLINE OF EQUIPMENT DOES NOT EQUAL CENTERLINE OF ENTRY DOOR
- CENTERLINE OF EQUIPMENT DOES EQUAL CENTERLINE OF EXIT DOOR
- CENTERLINE OF EQUIPMENT DOES EQUAL CENTERLINE OF TUNNEL BAY
- COORDINATE LOCATION OF TRENCH WITH CAR WASH MANUFACTURER'S DRAWINGS

PLAN GENERAL NOTES

- ALL DOORS TO BE 6" FROM ADJACENT WALL U.N.O.
- ALL SIGNS THAT DESIGNATE PERMANENT ROOMS AND SPACES SHALL HAVE RAISED AND BRAILED CHARACTERS AND PICTORIAL SYMBOL SIGNS, FINISH AND CONTRAST, AND MOUNTED 60 INCHES ABOVE THE FINISH FLOOR TO CENTERLINE OF THE SIGN PER ANSI
- ALL INTERIOR STUD WALLS TO BE WALL TYPE "3B", U.N.O.
- PROVIDE MOISTURE RESISTANT GYPSUM BOARD AT ALL TOILET ROOMS

FLOOR PLAN CODED NOTES

- WALL MOUNTED FIRE EXTINGUISHER. EXTINGUISHER TO BE: RED ENEMELED FINISH HEAVY DUTY STEEL CYLINDER. UL AND FM APPROVED. ABC MULTI PURPOSE DRY CHEMICAL, 10 LB CAPACITY UL RATED 4A 60B: C. HOSE TYPE, UPRIGHT, SQUEEZE GRIP OPERATION
- INTERIOR WALL LINER PANEL
- 14'-0" x 8'-0" OVERHEAD DOOR
- 10'-0" x 8'-0" OVERHEAD DOOR
- CAR WASH TRENCH, SEE MANUFACTURER'S DRAWINGS
- DECORATIVE AWNING W/ BRACKETS, CENTER OVER WINDOWS / DOORS
- DEDICATED COMMERCIAL GRADE SINK FOR UTILITY SINK
- ANSI COMPLIANT BOTTLED WATER COOLER WITH CUP DISPENSER
- 12" DEEP SHELVING W/ STANDARDS AND BRACKETS
- WIND WALL, P.T. 2x6 WALL W/ 7/16" OSB SHEATHING & LINER PANEL BOTH SIDES
- NOT USED
- UNDER COUNTER REFRIGERATOR
- SERVER RACK, SEE SHEET AS-1
- DOWNSPOUT
- ALUMINUM STOREFRONT SYSTEM, WINDOW HEAD HEIGHT = 8'-0", SEE ELEVATION 13/A5-1, PROVIDE 1" INSULATED GLASS
- NOT USED
- RECEPTIONIST DESK BY OTHERS. ANSI COMPLIANCE IS THE RESPONSIBILITY OF THE DESK DESIGNER
- PROVIDE 2 1/2" METAL Z-FURRING STRIPS @ 24" HORIZONTAL W/ MIN R-13 RIGID INSULATION IN FURRING CAVITIES W/ 5 MIL VAPOR BARRIER
- ANSI COMPLIANT SIGNAGE DESIGNATING UNISEX TOILET ROOM
- COFFEE MAKER, SEE INTERIOR ELEVATION
- MICROWAVE, SEE INTERIOR ELEVATION
- STACKABLE WASHER / DRYER
- ANSI COMPLIANT SIGNAGE DESIGNATING MAXIMUM OCCUPANCY OF 15 PERSONS
- QUICK-BRICK MASONRY CONSTRUCTION
- ANSI COMPLIANT EXIT SIGNAGE, SEE 9/A5-1
- STORAGE CABINETRY, SEE INTERIOR ELEVATION ON SHEET A5-1
- 10'-0" x 8'-0" OVERHEAD DOOR
- HVAC PLATFORM ABOVE, SEE DETAILS ON SHEET A1-3
- 8" CMU WALL

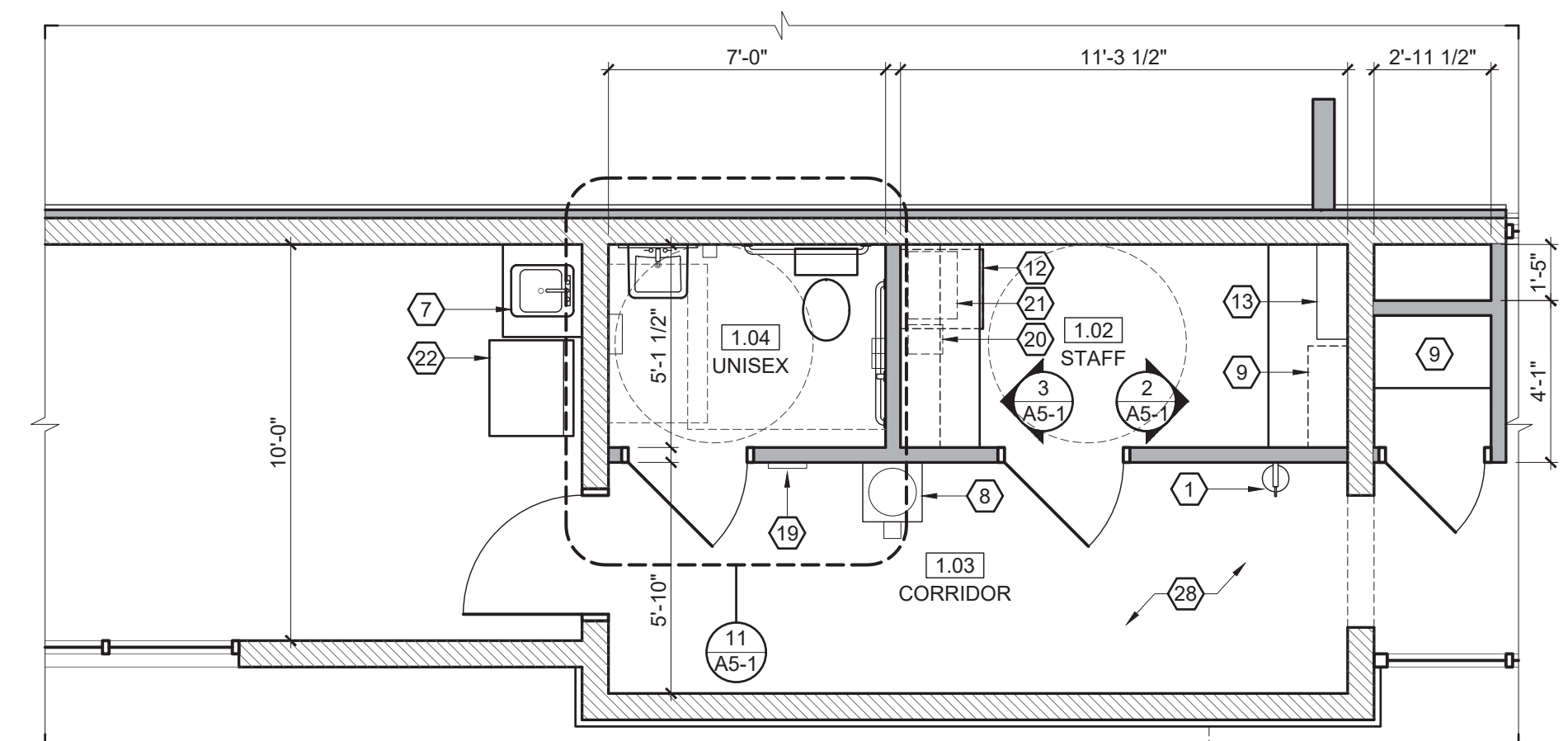
STRUCTURAL CODED NOTES

- #5 VERTICAL EACH CELL
- W8x28 W/ 5/16" PLATE, FASTEN TO WALL PER DETAIL 7/A4-2
- (2) L5x3-1/2x5/16 LLV
- PROVIDE HORZ. JOINT REINF. @ EACH COURSE IN END WALL
- (2) #5 VERT. TYP. @ ALL MASONRY OPENINGS
- PROVIDE HORIZONTAL JOINT REINFORCING @ EACH COURSE IN 18'-4" TALL WALLS
- #5 @ CORNERS AND 16" O.C. MAX @ END WALL
- PROVIDE #5 VERT. @ 48" O.C. IN WALL ABOVE OPENINGS
- NOT USED
- W8x24 W/ 5/16" PLATE
- W16x31 W/ 5/16" PLATE, FASTEN TO WALL PER DETAIL 7/A4-2
- W8x28 LINTEL W/ 5/16" PLATE
- PROVIDE #5 @ 48" O.C. VERT. & HORIZONTAL JOINT REINFORCING PER PLAN NOTES FOR ENTIRE WALL, TYP.
- (2) L3 1/2x3 1/2x5/16
- W12x30 W/ 5/16" PLATE

WALL TYPES SCHEDULE

#	ASSEMBLY DESCRIPTION	HR	NOTES
3A	2x4 WOOD STUDS @ 16" O.C. 5/8" GYP BD		FULL HEIGHT PARTITION, TERMINATE GYPSUM BOARD @ UNDERSIDE OF JOISTS. ASSEMBLY THICKNESS = 4 3/4"
3B	2x4 WOOD STUDS @ 16" O.C. 5/8" GYP BD 3" SOUND BATT		FULL HEIGHT PARTITION, TERMINATE GYPSUM BOARD @ UNDERSIDE OF JOISTS. ASSEMBLY THICKNESS = 4 3/4"
3C	2x4 WOOD STUDS @ 16" O.C. 5/8" GYP BD 3" SOUND BATT		FULL HEIGHT PARTITION, TERMINATE GYPSUM BOARD @ BOTTOM OF DECK. ASSEMBLY THICKNESS = 4 3/4"

4 FLOOR PLAN

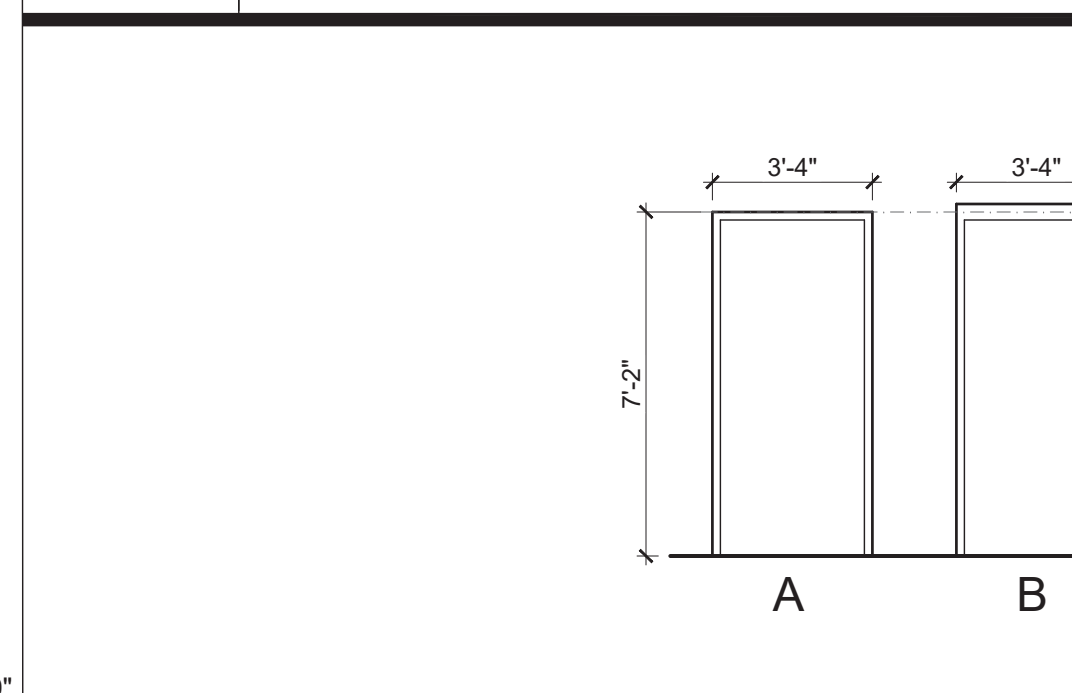


NO.	ROOM NAME	SIZE	ELEV.	MAT.	DOOR	RATING	GLASS	HDWR	FRAME	ELEV.	MAT.	REMARKS
1.01A	OFFICE	3070	02	AL/GS	0-HR	TEMP	SET 01	A	AL			CLOSER
1.01B	OFFICE	3070	02	AL/GS	0-HR	TEMP	SET 05	B	AL			CLOSER, ENTRY KEY
1.02	STAFF	3070	03	H.M.	0-HR	TEMP	SET 02	A	H.M.			
1.04	UNISEX	3070	01	H.M.	0-HR	N/A	SET 03	A	H.M.			
1.05A	MECHANICAL	3070	04	H.M.	0-HR	TEMP	SET 04	A	H.M.			
1.05B	MECHANICAL	3070	02	ALUM.	0-HR	N/A	SET 04	B	ALUM.			
1.06	WASH BAY	3070	02	AL/GS	0-HR	TEMP	SET 05	B	ALUM.			
1.07	CLOSET	2670	01	WD	0-HR	N/A	SET 02	N/A	N/A			CUSTOM SLAT WALL DOOR
1.08	MECHANICAL	(2) 3070	05	AL/GS	0-HR	TEMP	SET 05	B	H.M.			

- #### DOOR GENERAL NOTES
- ALL DOOR HARDWARE TO BE ANSI COMPLIANT LEVER STYLE
 - ALL DOOR HARDWARE TO BE MOUNTED BETWEEN 34" - 48" A.F.F.
 - ALL GLAZING IN NEW DOORS TO BE TEMPERED
 - ALL DOORS TO RECEIVE (3) HINGES
 - ALL DOORS TO RECEIVE (3) SILENCERS
 - ALL DOORS TO RECEIVE DOOR STOP
 - ALL EXTERIOR DOORS TO RECEIVE CLOSER
 - ALL EXTERIOR DOORS TO HAVE ANSI COMPLIANT THRESHOLD (1/4" MAX)
 - ALL EGRESS DOORS SHALL UNLATCH WITH ONLY ONE OPERATION OF THE DOOR HARDWARE, READILY OPERABLE FROM EGRESS SIDE WITHOUT USE OF A KEY OR SPECIAL KNOWLEDGE AND SHALL NOT REQUIRE TIGHT GRASPING, TIGHT PINCHING OR TWISTING OF THE WRIST TO OPERATE. 2017 OBC 1010.1.9/1010.1.9.1/1010.1.9.5.

- #### DOOR HARDWARE SETS
- SET 01: OFFICE LOCKSET
 - SET 02: STORAGE LOCKSET
 - SET 03: PRIVACY LOCKSET
 - SET 04: PASSAGE LOCKSET
 - SET 05: EXIT LOCKSET
 - SET 06: PUSH / PULL
- KEY ALL DOORS ALIKE

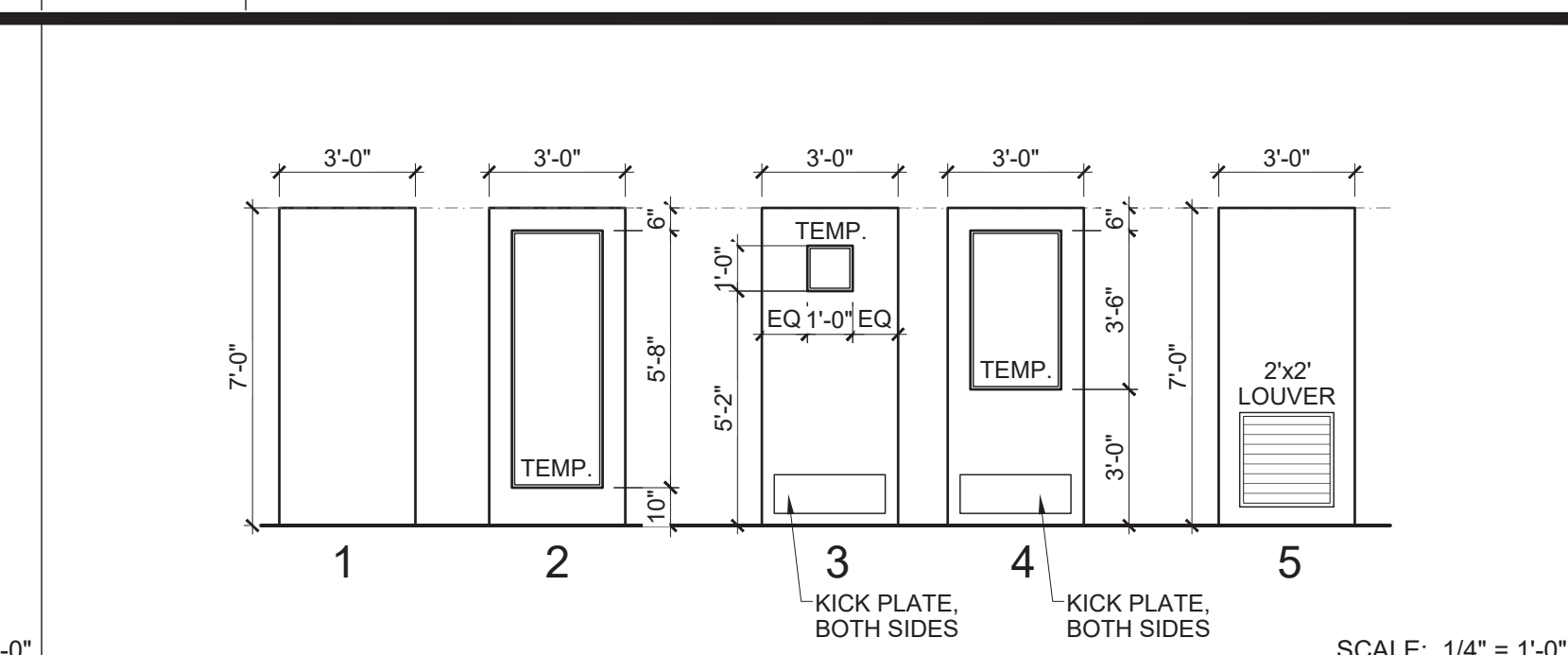
5 DOOR SCHEDULE



SCALE: 1/4" = 1'-0"

NO.	ROOM NAME	FLOOR	BASE	NORTH	EAST	SOUTH	WEST	CLG	REMARKS
1.01	OFFICE	WD	VB	PT-2	PT-2	PT-2	PT-2	NO	PAINT BAR JOISTS & ROOF DECK
1.02	STAFF	WD	VB	PT-1	PT-1	PT-1	PT-1	NO	PAINT BAR JOISTS & ROOF DECK
1.03	CORRIDOR	WD	VB	PT-1	PT-1	PT-1	PT-1	GYP	
1.04	UNISEX	WD	VB	PT-1	PT-1	PT-1	PT-1	GYP	6" BASE
1.05	MECHANICAL	NO	NO	PT-1	PT-1	PT-1	PT-1	NO	PAINT BAR JOISTS & ROOF DECK
1.06	WASH BAY	NO	NO	WL	WL	WL	WL	NO	PAINT BAR JOISTS & ROOF DECK
1.07	STORAGE	WD	VB	PT-1	PT-1	PT-1	PT-1	NO	PAINT BAR JOISTS & ROOF DECK
1.08	EQUIPMENT	NO	NO	PT-1	PT-1	PT-1	PT-1	NO	PAINT BAR JOISTS & ROOF DECK

4 FINISH SCHEDULE



SCALE: 1/4" = 1'-0"

3 ENLARGED FLOOR PLAN

JNRNB2022-0013
PSP2022-0032
Revision 4

Received 8/29/2023
City of Rochester Hills
Planning & Economic
Development

2 FRAME ELEVATIONS

1 DOOR ELEVATIONS

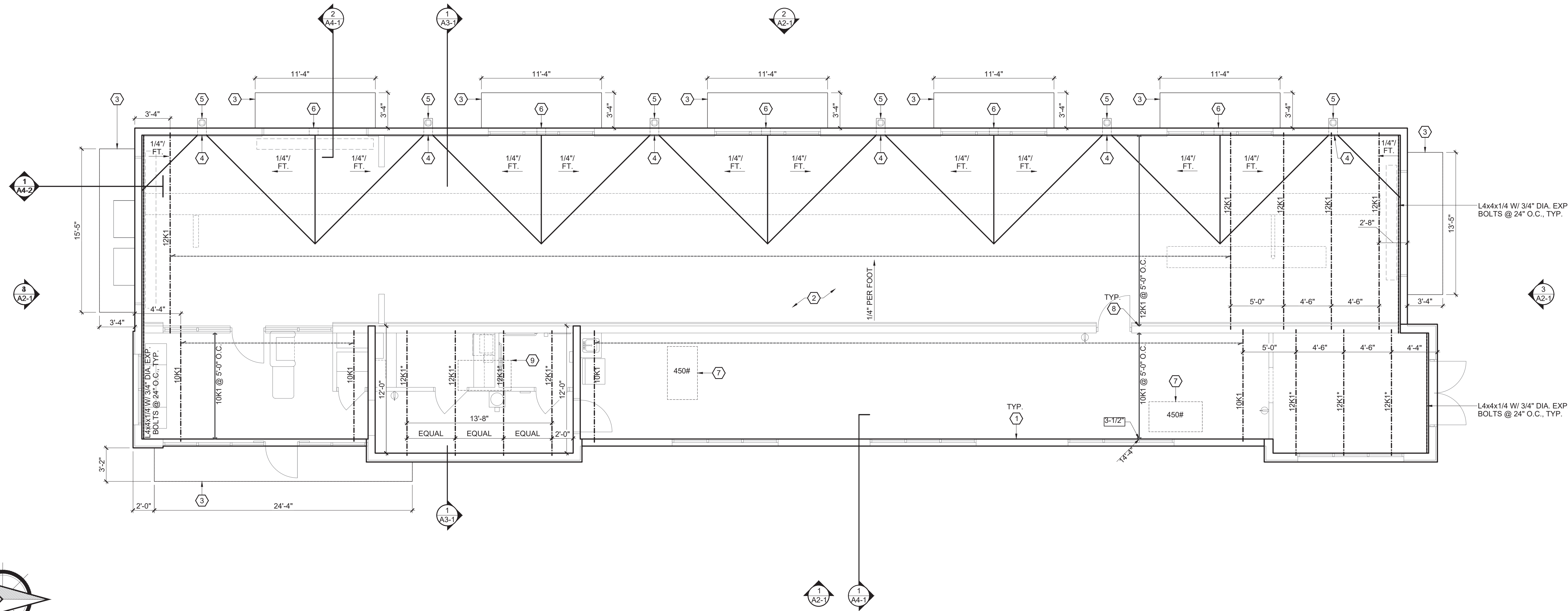
#	DATE	ISSUED WITH: CHANGE DESCRIPTION

10 E. AUBURN ROAD
ROCHESTER HILLS, MI 48307

ACLEAN
EXPRESS AUTO WASH

SBA STUDIOS
ARCHITECTURAL DESIGN
614.562.7761 WWW.SBA-STUDIOS.COM

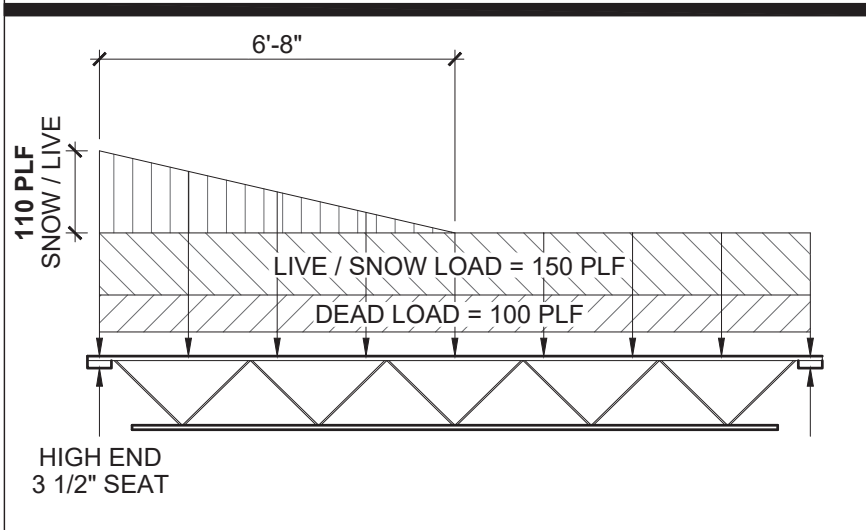
SCALE: 3/16" = 1'-0" (U.N.O.)
SHEET # / DESCRIPTION
FLOOR PLAN
A1-1
DATE: 08.28.2023
PRELIMINARY DESIGN
SCOTT BAKER, LICENSE #14654
EXPIRATION DATE 12/31/2023
SBA STUDIOS PROJECT # 2023-168



ROOF PLAN CODED NOTES

- MASONRY PARAPET WALL
- STANDARD UL CLASS A FM/1-90 FULLY ADHERED SINGLE PLY MEMBRANE ROOFING ON RIGID INSULATION, SLOPE TOWARDS SCUPPERS
- PREFABRICATED CANOPY INSTALLED PER MANUFACTURER'S INSTRUCTIONS
- DRAINAGE SCUPPER THROUGH PARAPET WALL
- PRE-MANUFACTURED COLLECTION BOXES W/ 5" DOWNSPOUTS EMERGENCY OVERFLOW SCUPPER
- MAKE-UP AIR UNIT BELOW, SEE SUPPORT DETAIL 1/A1-2
- PROVIDE 3-3/4" DEEP BEARING PLATES @ INTERIOR BEARING WALL LOCATIONS
- ROOFTOP CONDENSING UNIT.

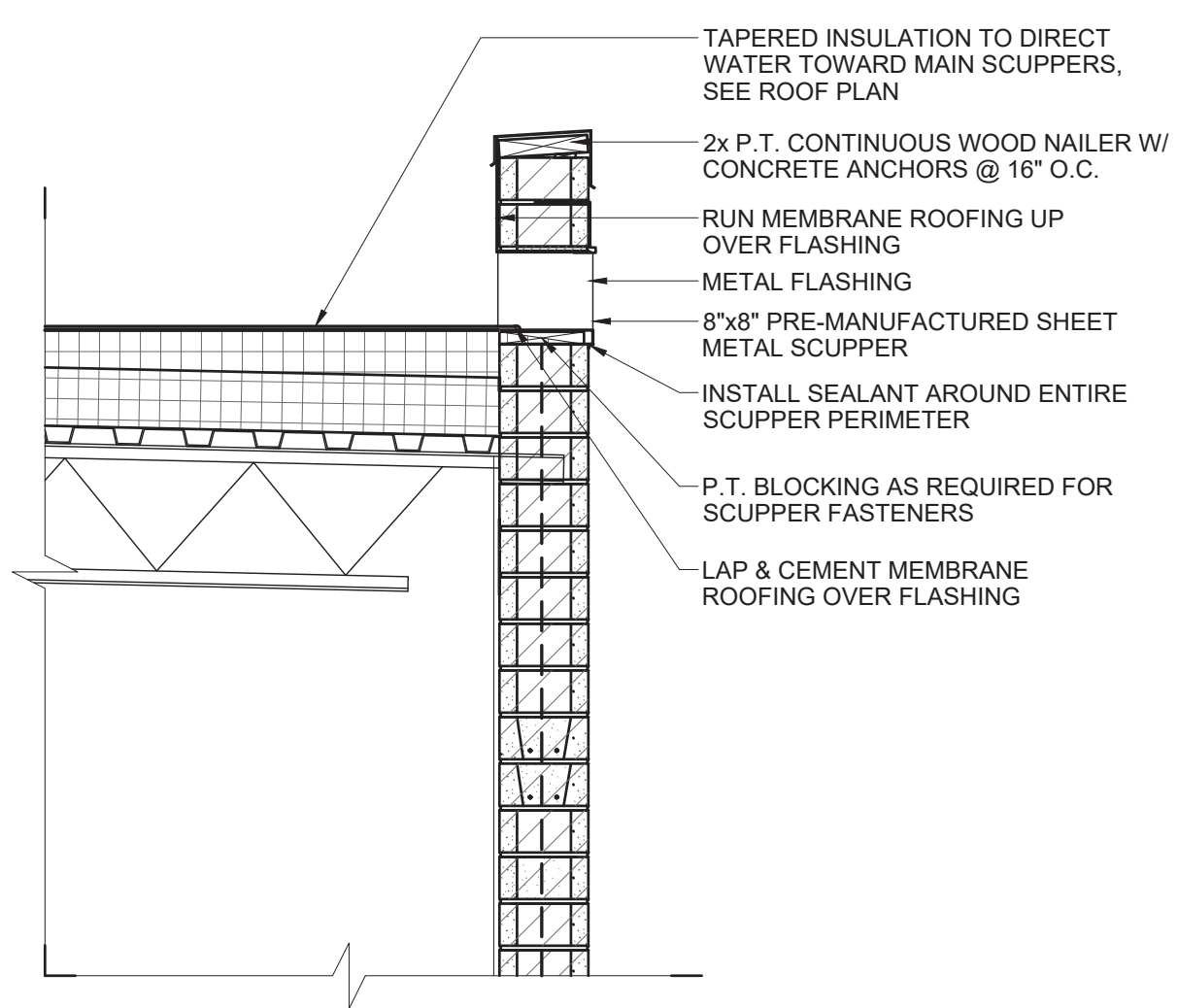
LOAD DIAGRAM @ JOISTS NOTED*



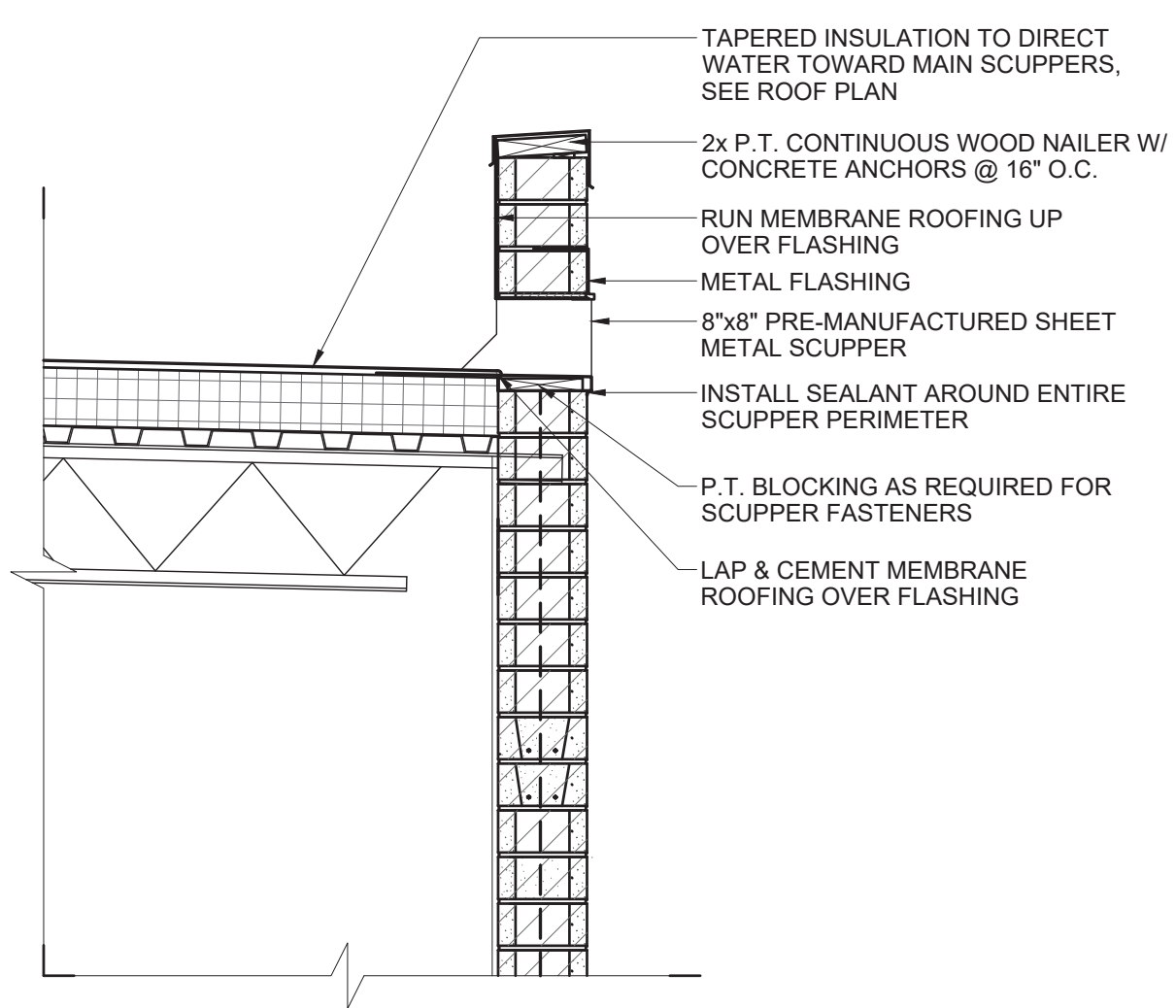
ROOF FRAMING NOTES

- DESIGN ROOF LIVE LOADS = 25 PSF PLUS THE EFFECTS OF DRIFTING SNOW PER ASCE. 8PSF NET WIND UPLIFT.
- ROOF CONSTRUCTION: 1-1/2" 20 GA, GALVANIZED STEEL ROOF DECK, U.N.O.
- ELEVATIONS SHOWN INDICATE THE FOLLOWING:
 AT JOIST: JOIST BEARING EL. (U.N.O.)
 AT BEAMS: TOP OF BEAM EL. (U.N.O.)
 WORKPOINTS AT SLOPING MEMBERS ARE AT CENTERLINES OF COLUMNS, OR SUPPORTING BEAMS & AT INSIDE FACE OF WALLS, U.N.O.
- JOISTS TO HAVE STANDARD 2-1/2" DEEP BEARING SEATS EXCEPT WHERE SHOWN THUS: 3-1/2"
- JOIST MANUFACTURER TO DESIGN JOISTS FOR THE LOADS SHOWN ON ROOF PLAN & IN THE JOIST LOAD DIAGRAM ON THIS SHEET.
- SEE DETAILS 5/A4-2 FOR TOP SUPPORT OF NON-LOAD BEARING CMU WALLS.
- SEE SHEET A8-1 FOR STRUCTURAL NOTES.
- SEE SHEET A4-2 FOR TYPICAL JOIST DETAILS.

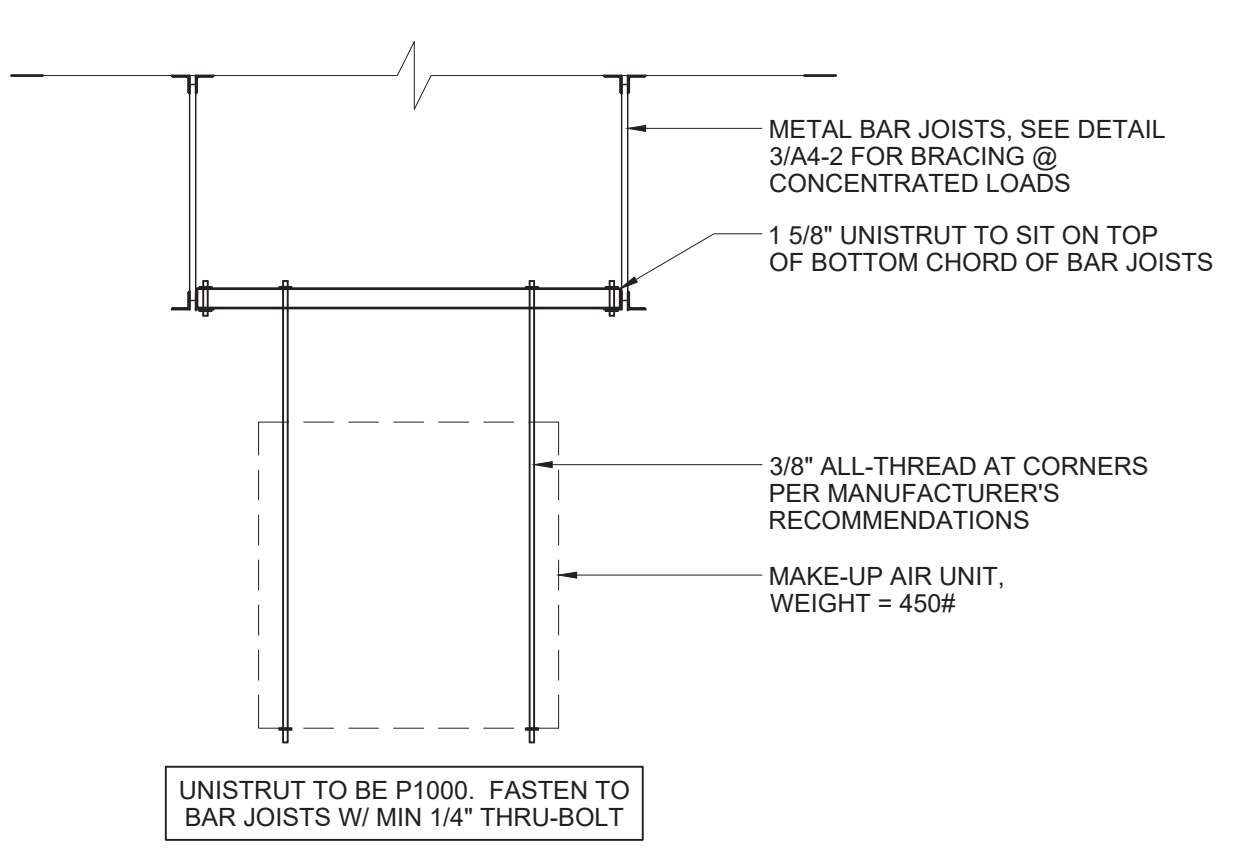
4 ROOF PLAN



SCALE: 3/4" = 1'-0"



SCALE: 3/4" = 1'-0"



SCALE: 3/4" = 1'-0"

3 OVERFLOW SCUPPER DETAIL

2 SCUPPER DETAIL

1 MAKE-UP AIR UNIT SUPPORT

#	DATE	ISSUED WITH: CHANGE DESCRIPTION

10 E. AUBURN ROAD
 ROCHESTER HILLS, MI 48307

CLEAN
 EXPRESS AUTO WASH

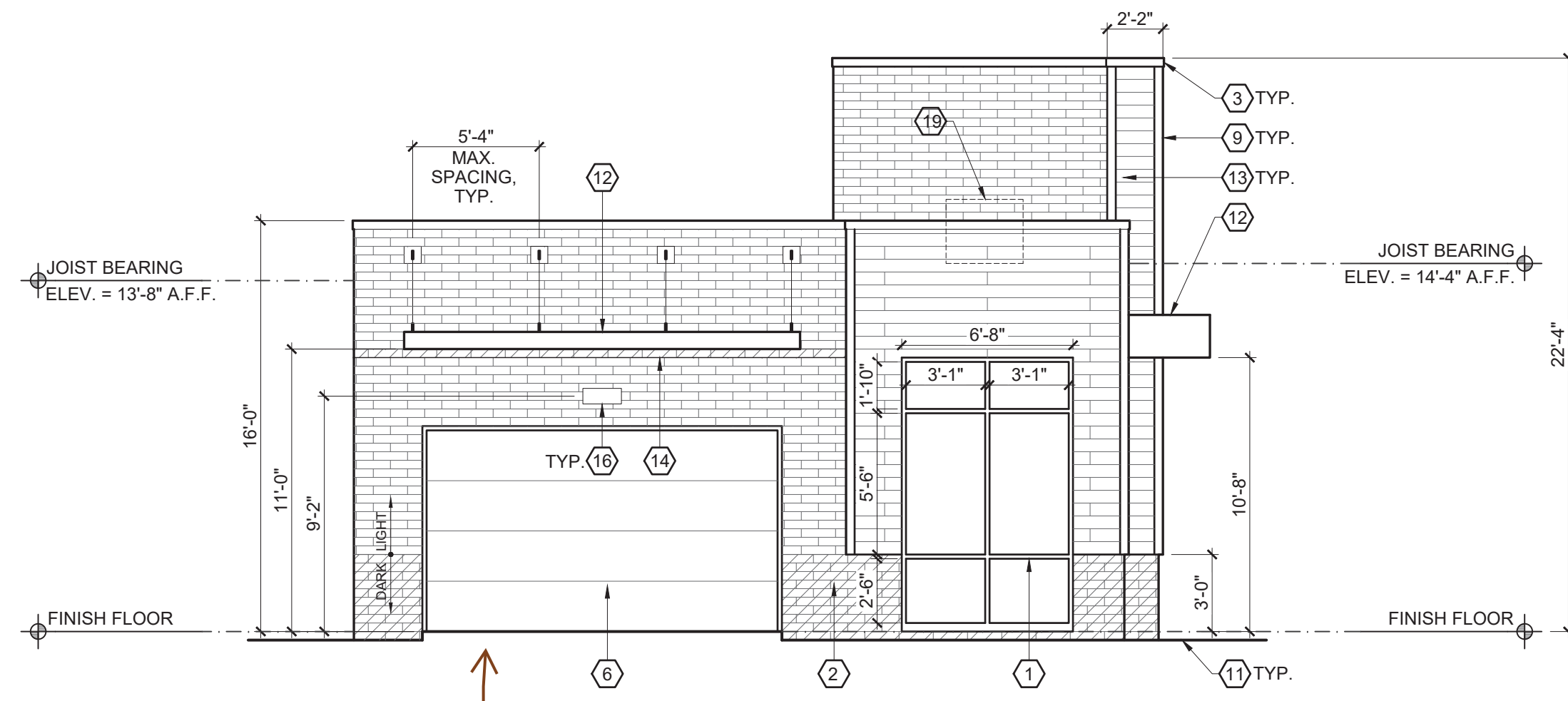
SBA
 STUDIOS
 ARCHITECTURAL DESIGN
 614.562.7761 WWW.SBA-STUDIOS.COM

SCALE: 3/16" = 1'-0" (U.N.O.)
 SHEET # / DESCRIPTION
 ROOF PLAN
A1-2
 DATE: 08.28.2023
 PRELIMINARY DESIGN
 SBA STUDIOS PROJECT # 2023-168

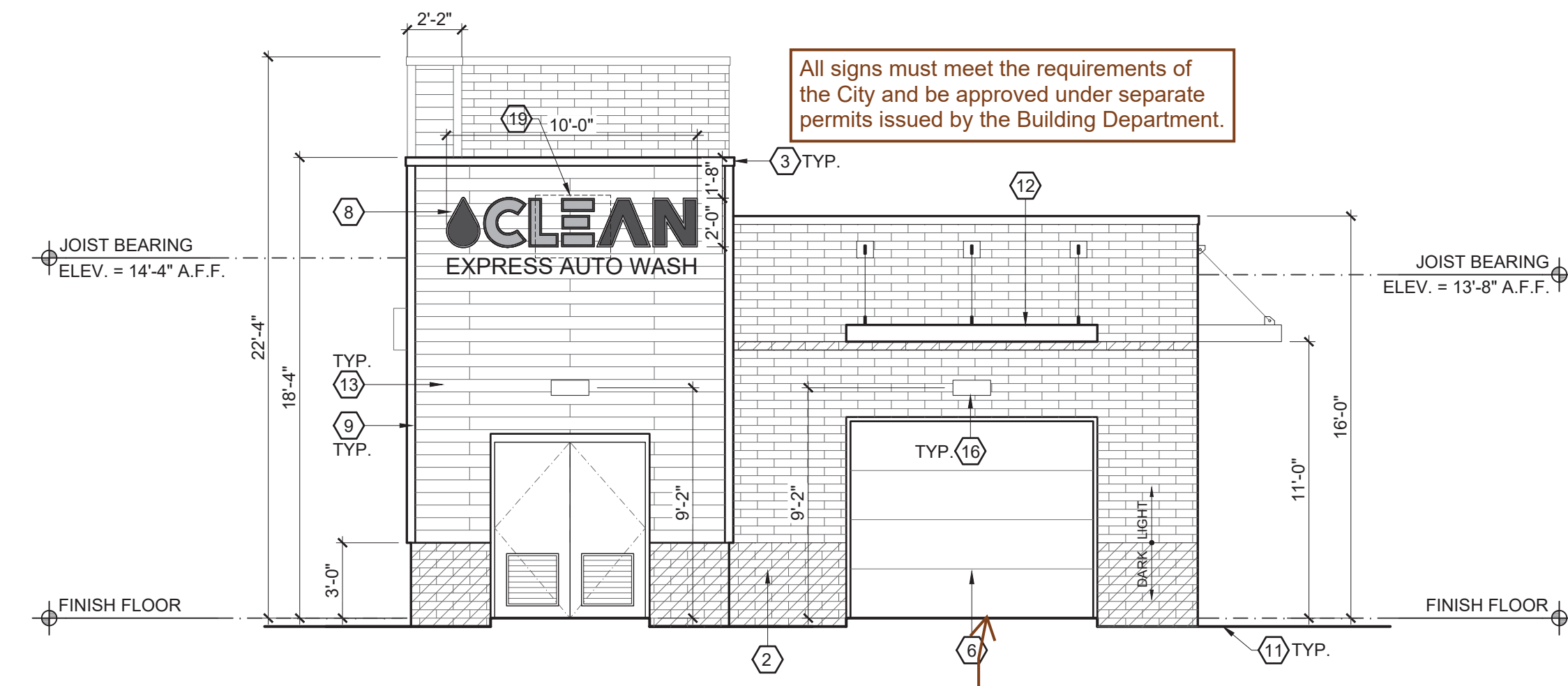


JNRN2022-0013
 PSP2022-0032
 Revision 4

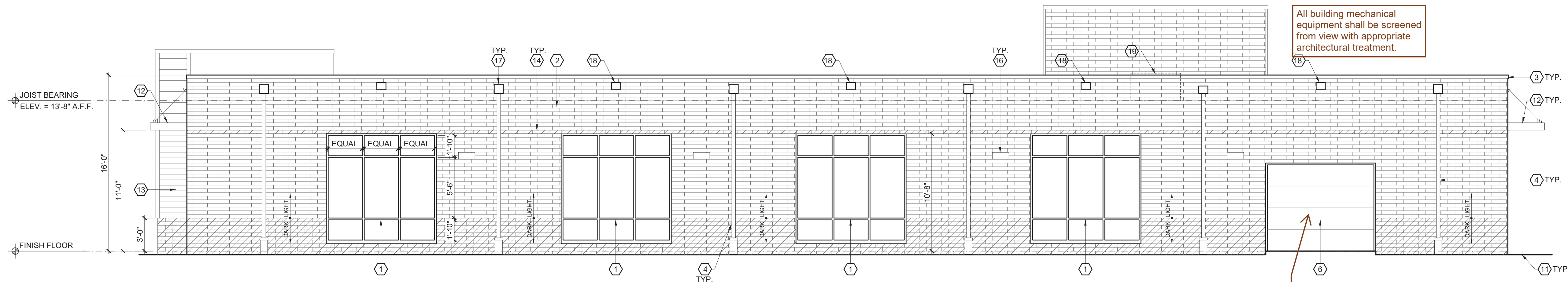
Received
 8/29/2023
 City of Rochester Hills
 Planning & Economic
 Development



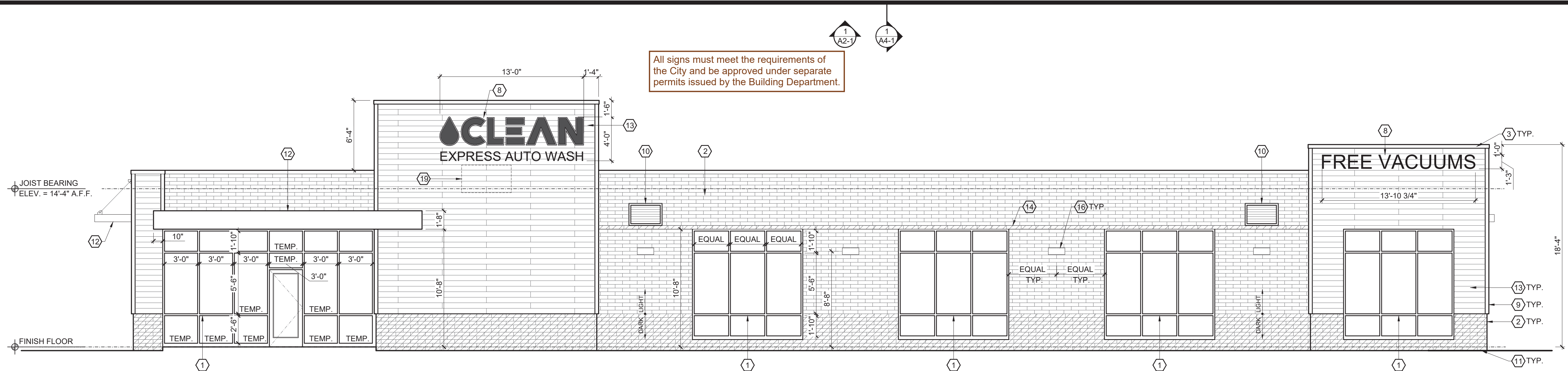
4 SOUTH ELEVATION



3 NORTH ELEVATION



2 WEST ELEVATION

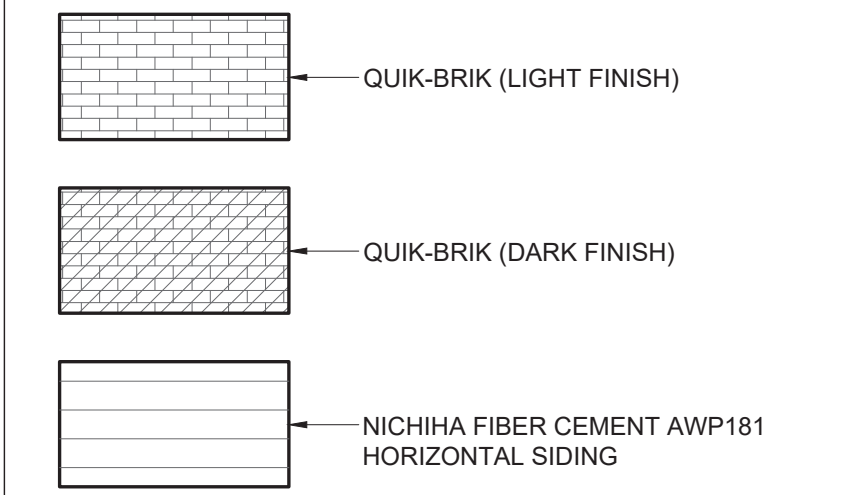


1 EAST ELEVATION

ELEVATION CODED NOTES

1. ALUMINUM STOREFRONT GLAZING SYSTEM. MANUFACTURER TO DESIGN FOR WIND LOAD REQUIREMENTS PER CODE.
2. QUIK-BRIK CMU CONSTRUCTION. SEE MATERIALS LEGEND. INSTALL CONTROL JOINTS PER MANUFACTURER'S WRITTEN INSTALLATION INSTRUCTIONS.
3. CONTINUOUS METAL COPING, TYP.
4. 4" METAL DOWNSPOUT
5. NOT USED
6. OVERHEAD DOOR
7. NOT USED
8. SIGNAGE PROVIDED BY OWNER. ALL SIGNS TO BE SUBMITTED AND APPROVED UNDER SEPARATE PERMITS ISSUED BY THE BUILDING DEPARTMENT.
9. 1/4" COMPOSITE CORNER TRIM, TYP.
10. 36"x24" METAL WALL LOUVER W/ 2" FRAME. SEE HVAC DRAWINGS. LOCATE SUCH THAT OPENING IS NOT DIRECTLY BENEATH A ROOF JOIST
11. GRADE, COORDINATE W/ CIVIL DRAWINGS.
12. PRE-MANUFACTURED ALUMINUM AWNING. INSTALL PER MANUFACTURER'S INSTRUCTIONS.
13. NICHHA FIBER CEMENT AWP181 HORIZONTAL SIDING.
14. MASONRY BAND IN DARK FINISH TO MATCH BASE OF WALL
15. NOT USED
16. DECORATIVE LIGHT FIXTURE
17. SCUPPER & DOWNSPOUT COLLECTION BOX
18. EMERGENCY OVERFLOW SCUPPER
19. CONDENSING UNIT BEHIND TALL PARAPET WALL.

ELEVATION MATERIAL LEGEND



EXTERIOR MATERIAL NOTES:
1. COLOR OF METAL COPING TO MATCH STOREFRONT SYSTEM COLOR

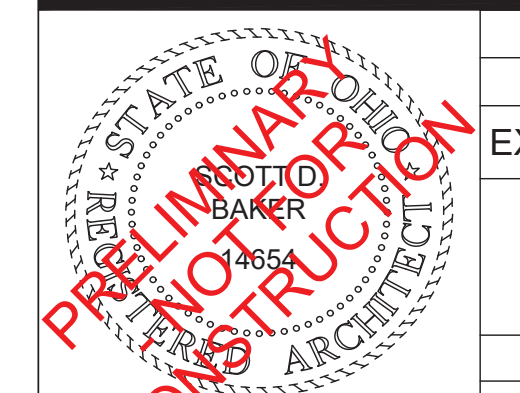
#	DATE	ISSUED WITH: CHANGE DESCRIPTION

10 E. AUBURN ROAD
ROCHESTER HILLS, MI 48307

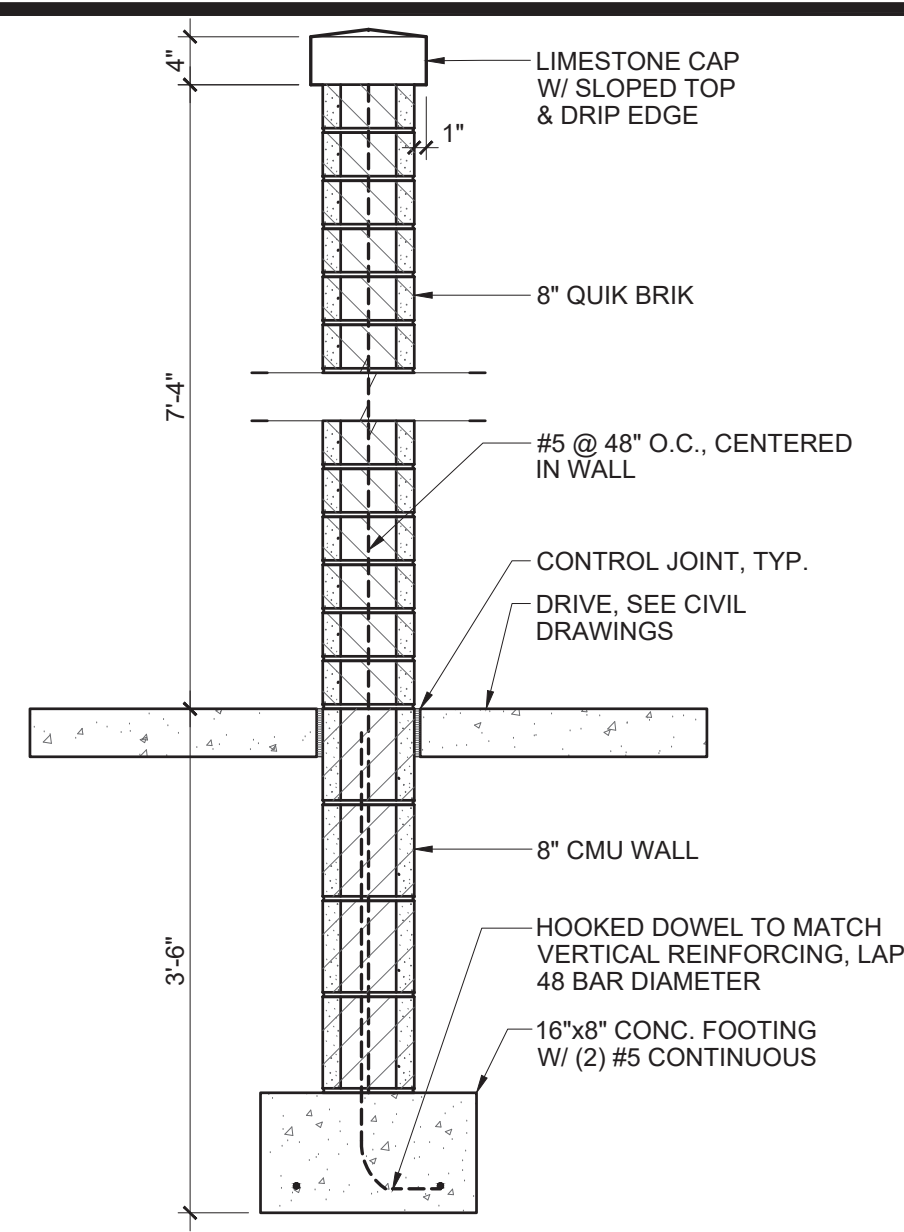
CLEAN
EXPRESS AUTO WASH

SBA STUDIOS
ARCHITECTURAL DESIGN
614.562.7761 WWW.SBA-STUDIOS.COM

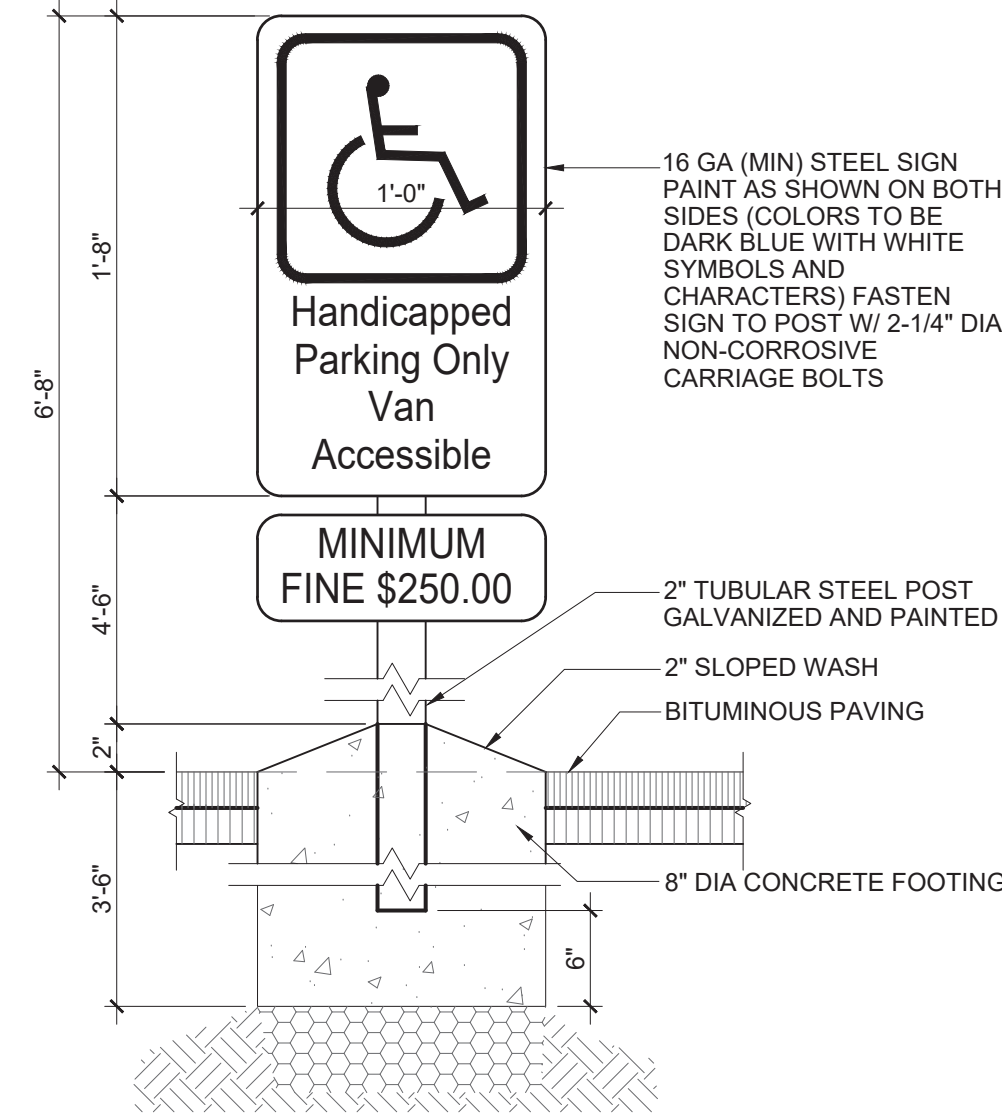
JNRNB2022-0013
PSP2022-0032
Revision 4
Received 8/29/2023
City of Rochester Hills
Planning & Economic
Development



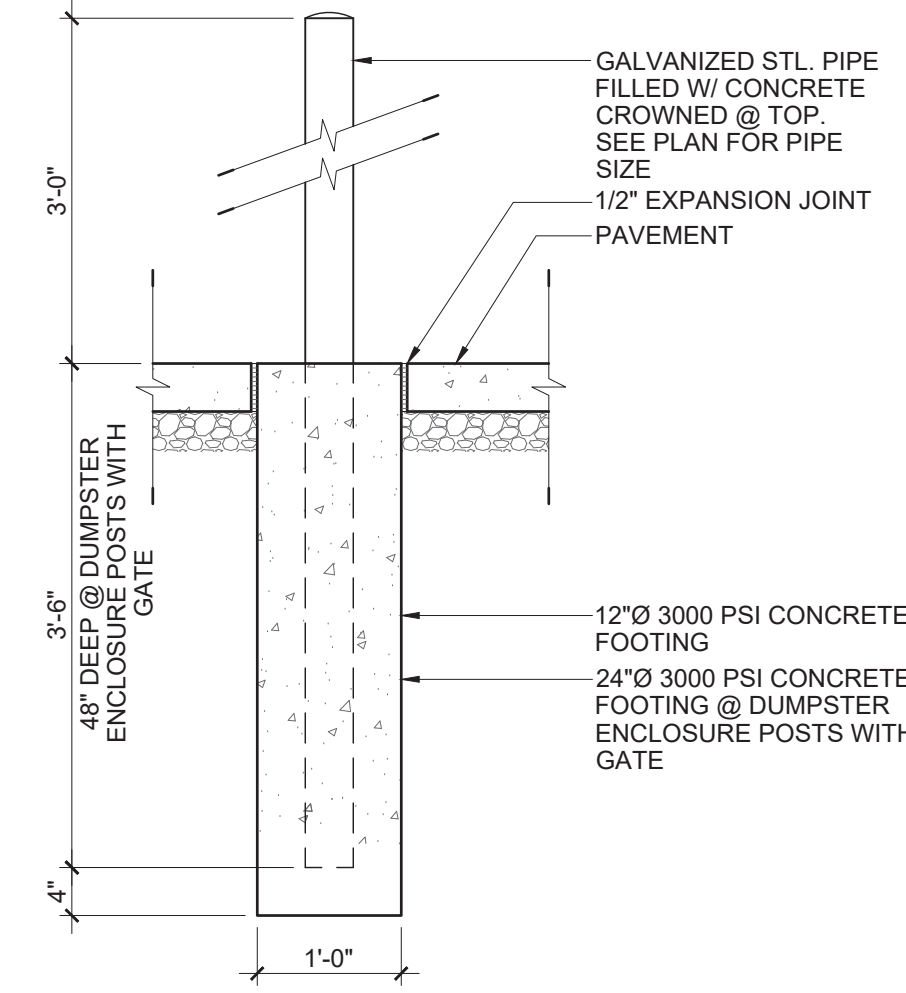
SCALE: 3/16" = 1'-0"
SHEET # / DESCRIPTION
EXTERIOR ELEVATIONS
A2-1
DATE: 08.28.2023
PRELIMINARY DESIGN
SBA STUDIOS PROJECT # 2023-168



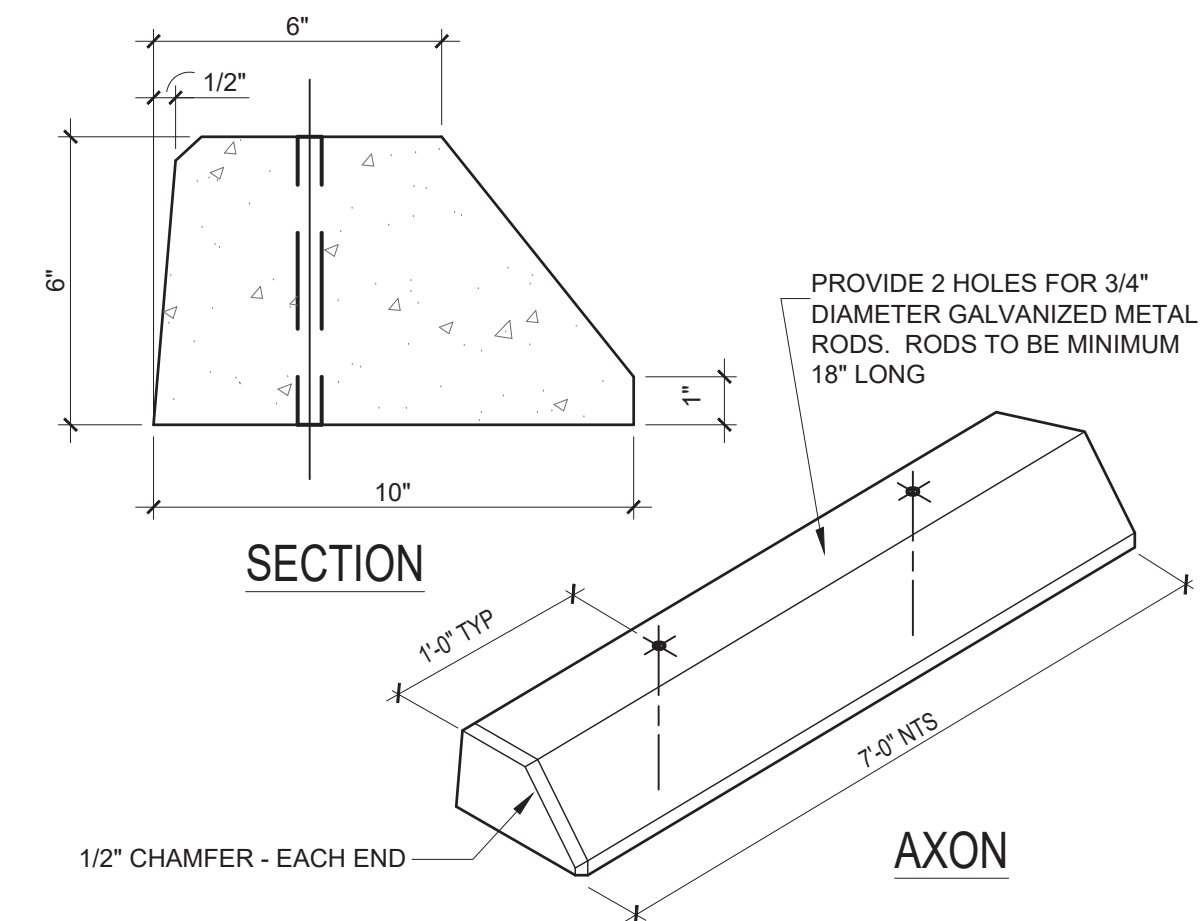
10 DUMPSTER ENCLOSURE SECTION



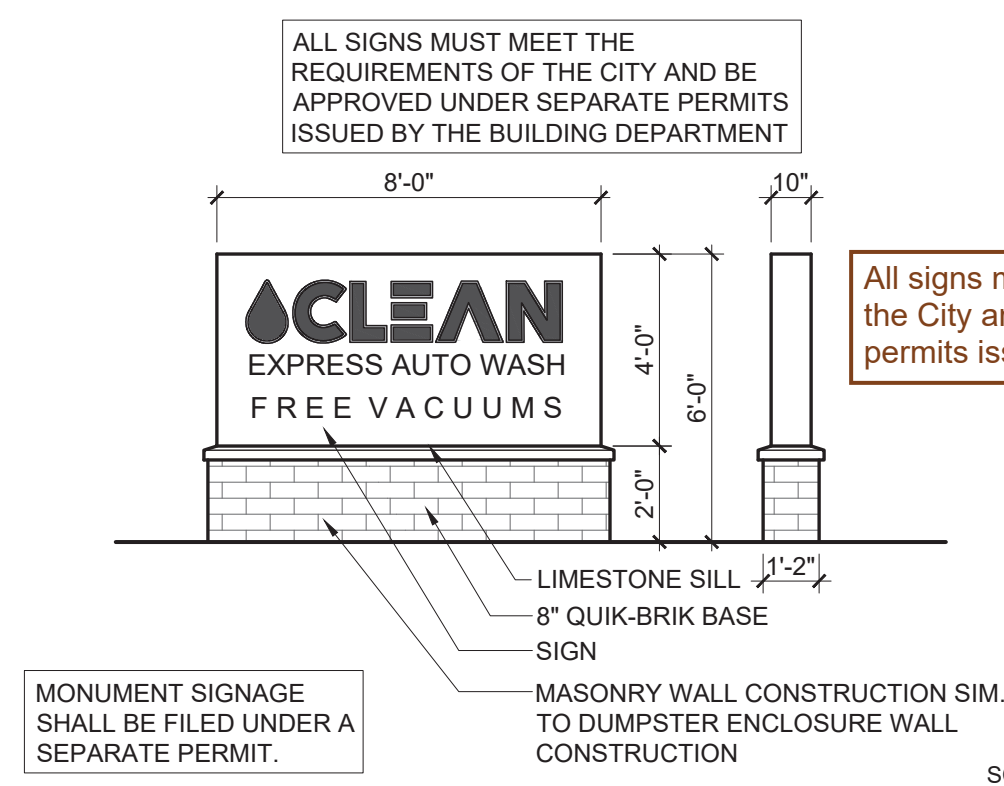
9 ACCESSIBLE PARKING SIGNAGE



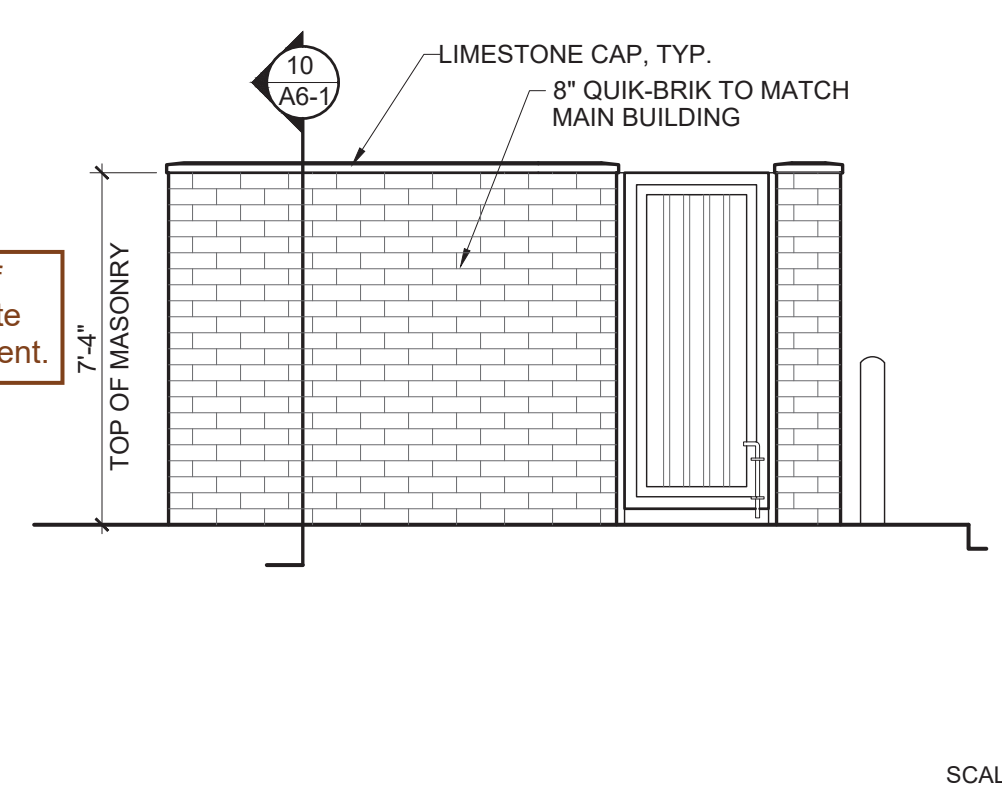
5 PIPE BOLLARD DETAIL



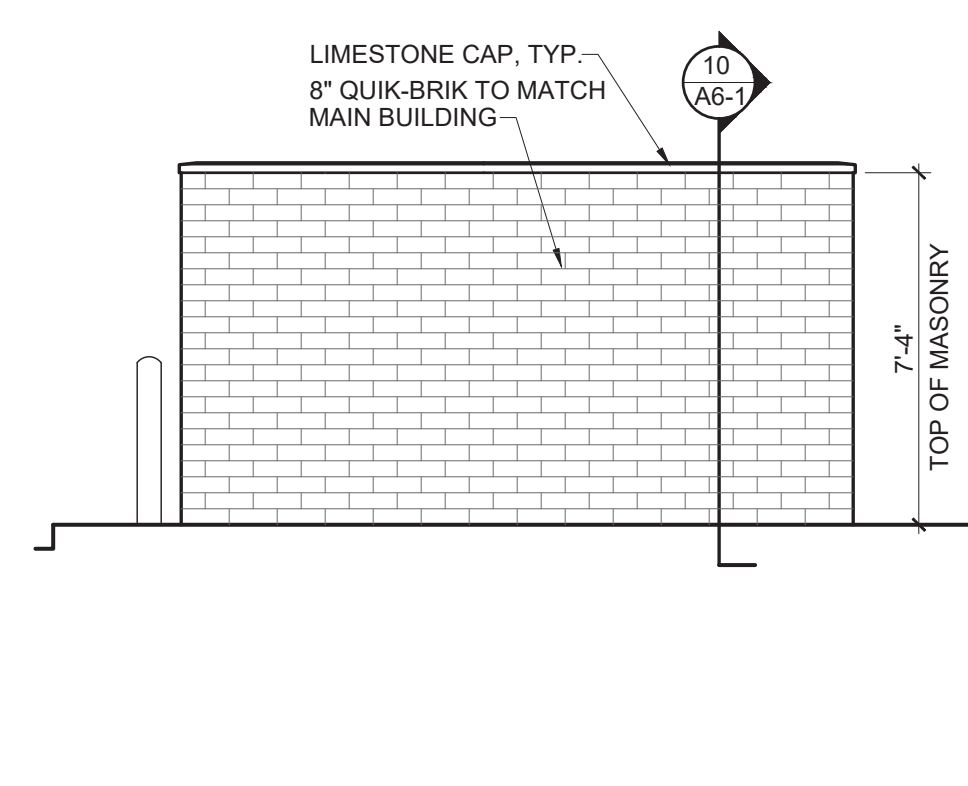
4 PARKING BLOCK DETAIL



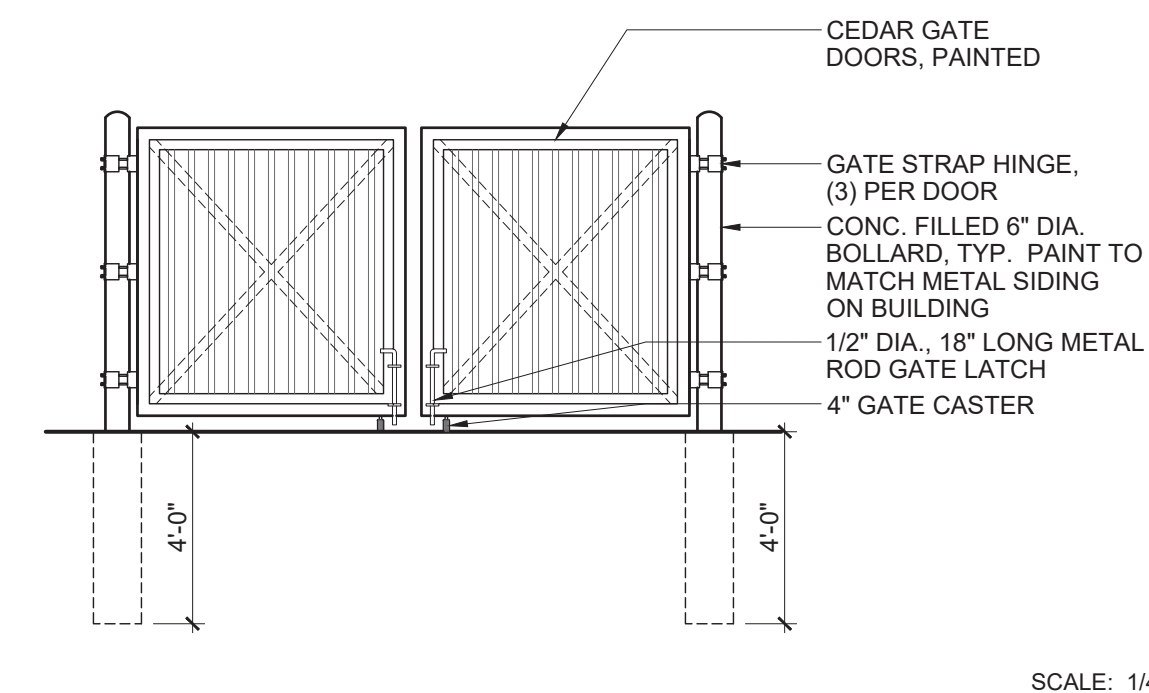
8 EXTERIOR MONUMENT SIGNAGE



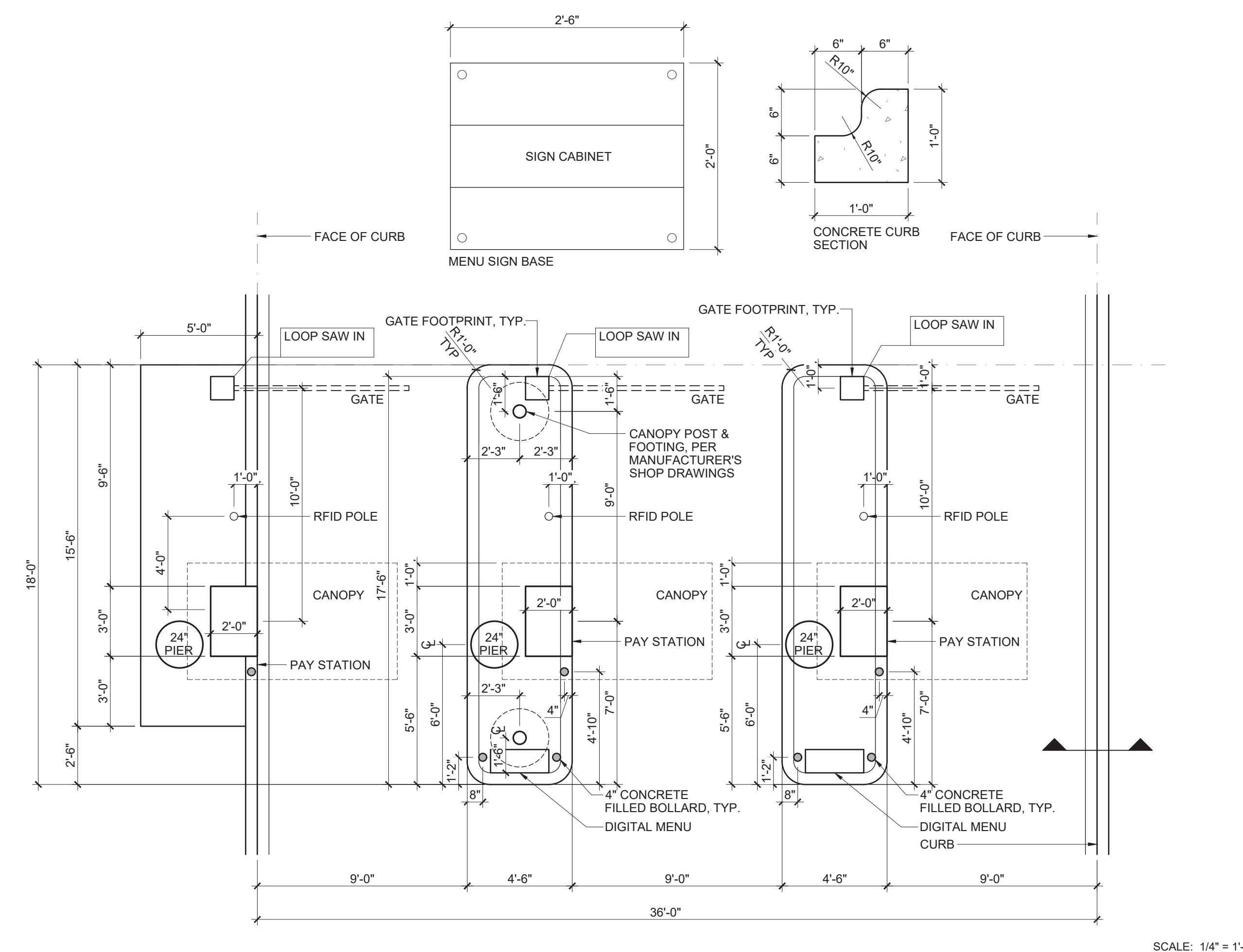
7 DUMPSTER ENCLOSURE - ELEVATIONS



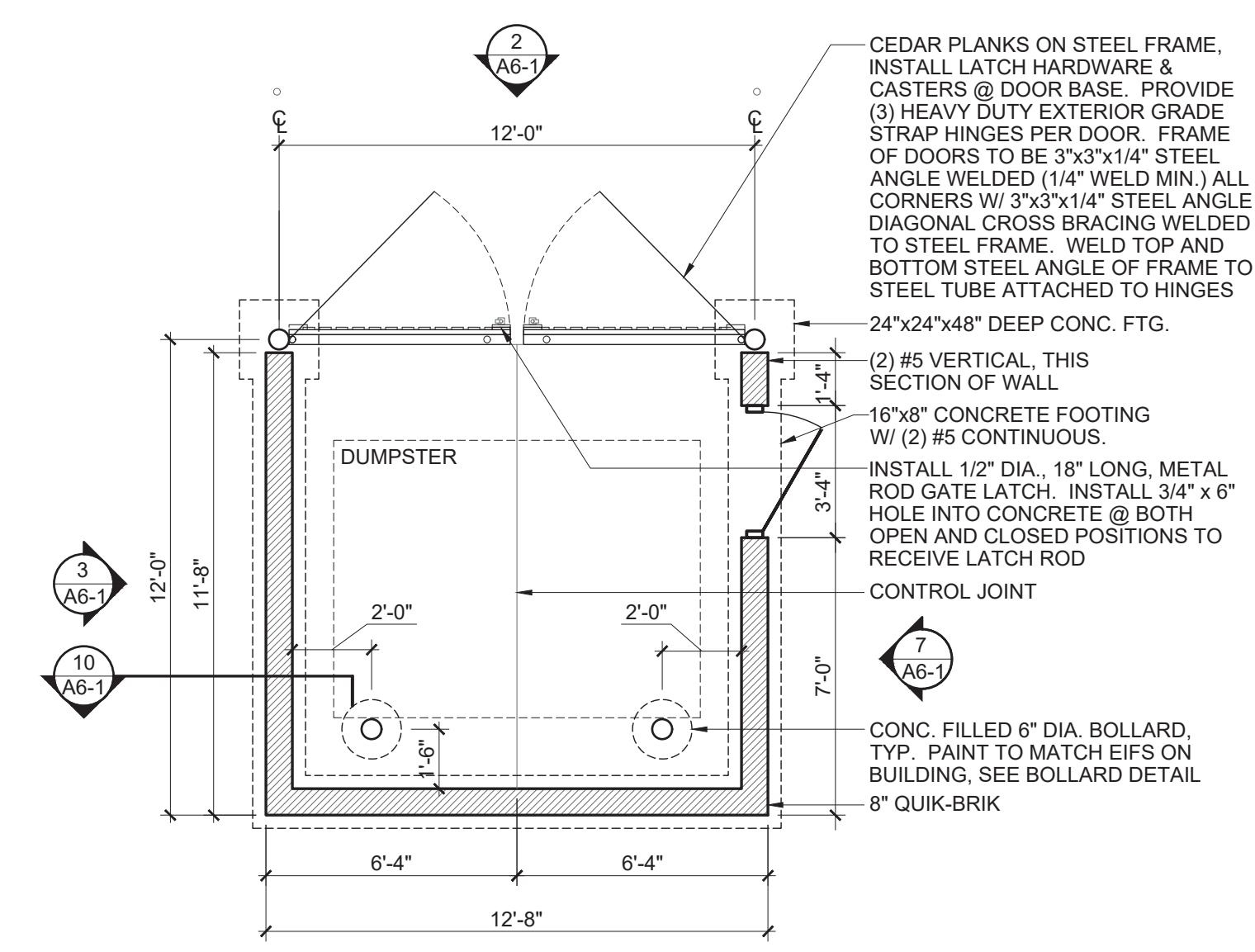
3 DUMPSTER ENCLOSURE - ELEVATIONS



2 DUMPSTER ENCLOSURE - ELEVATIONS



6 PAY STATION LAYOUT



1 DUMPSTER PLAN

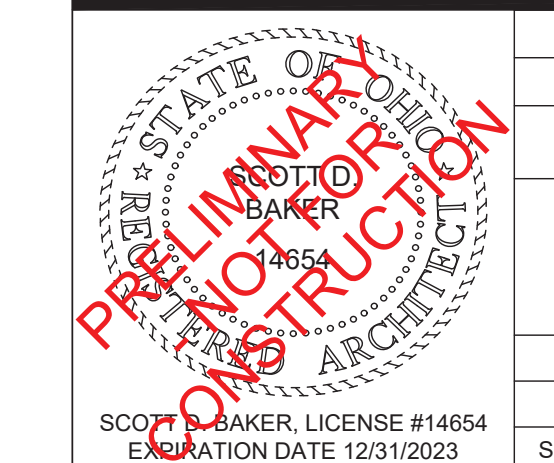
#	DATE	ISSUED WITH: CHANGE DESCRIPTION

10 E. AUBURN ROAD
ROCHESTER HILLS, MI 48307

614.562.7761 WWW.SBA-STUDIOS.COM

SCALE: VARIES
SHEET # / DESCRIPTION
SITE DETAILS
A6-1
DATE: 07.17.2023
PRELIMINARY DESIGN
SBA STUDIOS PROJECT # 2023-166

JNRN/2022-0013
PSP/2022-0032
Revision 4
Received 8/29/2023
City of Rochester Hills
Planning & Economic
Development

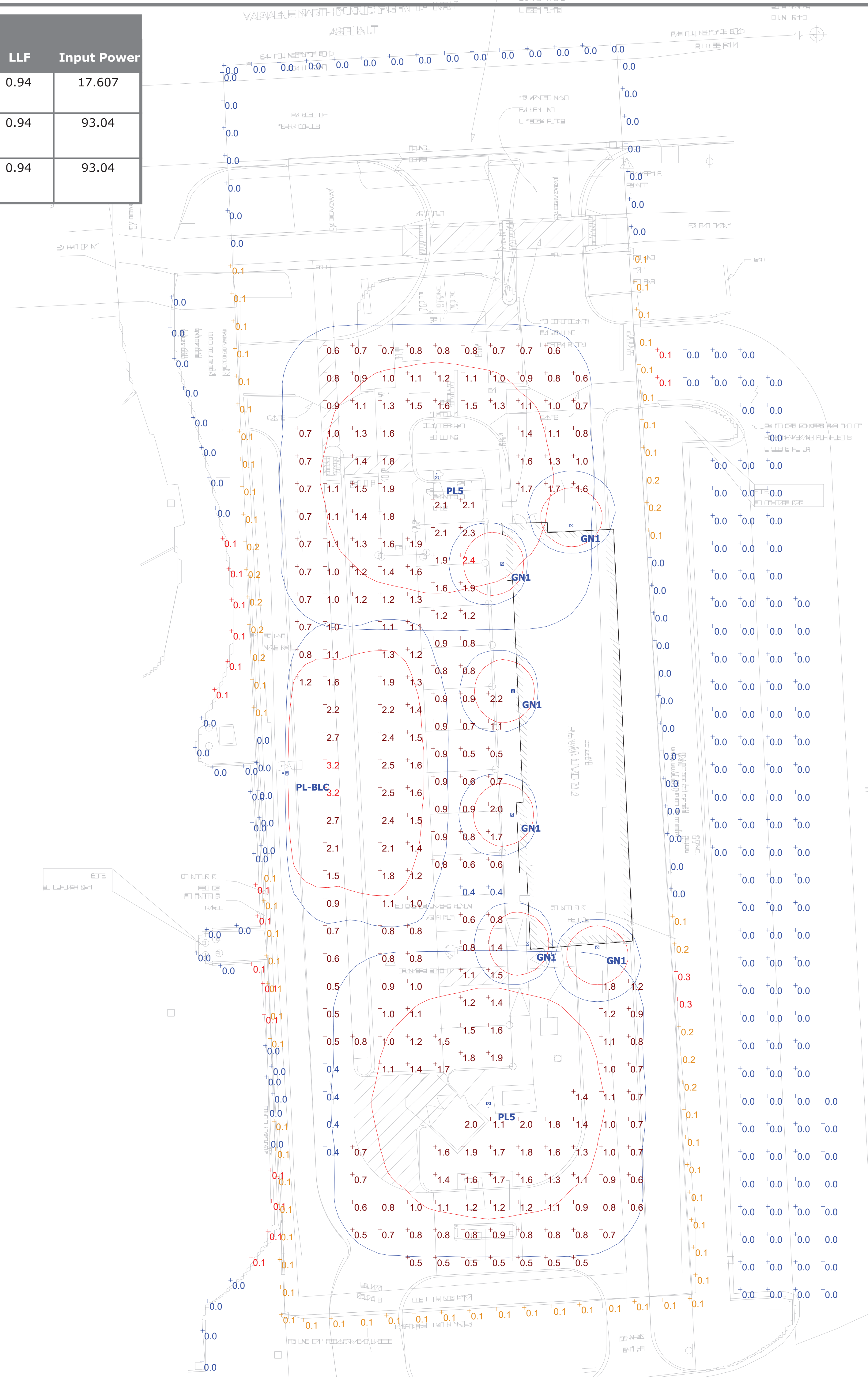


Schedule										
Symbol	Label	QTY	Manufacturer	Catalog	Description	Number Lamps	Lamp Output	LLF	Input Power	
⊗	GN1	6	BOCK LIGHTING	RA12-LED17	LED GOOSENECK FIXTURE	1	900	0.94	17.607	
⊗ □	PL5	2	Lithonia Lighting	DSX0 LED P4 30K 70CRI T5M	D-Series Size 0 Area Luminaire P4 Performance Package 3000K CCT 70 CRI Type 5 Medium	1	11152	0.94	93.04	
⊗ □	PL-BLC	1	Lithonia Lighting	DSX0 LED P4 30K 70CRI BLC3	D-Series Size 0 Area Luminaire P4 Performance Package 3000K CCT 70 CRI Type 3 Extreme Backlight Control	1	7768	0.94	93.04	

Statistics						
Description	Symbol	Avg	Max	Min	Max/Min	Avg/Min
PROPERTY LINE - CULVERS	+	0.0 fc	0.1 fc	0.0 fc	N/A	N/A
PROPERTY LINE - PENNZOIL	+	0.0 fc	0.1 fc	0.0 fc	N/A	N/A
PROPERTY LINE - PERIMETER	+	0.1 fc	0.3 fc	0.0 fc	N/A	N/A
VACUUM & PARKING SPACES	+	1.2 fc	2.4 fc	0.4 fc	6.0:1	3.0:1
DRIVING LANES	+	1.2 fc	3.2 fc	0.4 fc	8.0:1	3.0:1

Note

1. POLE LIGHTS MOUNTED AT 17' AFG
2. 15' POLE ON A 2' POLE BASE
3. GOOSENECK WALL SCONCES MOUNTED AT 10' AFG



**CLEAN EXPRESS CAR WASH - ROCHESTER HILLS, MI
SITE LIGHTING LAYOUT**

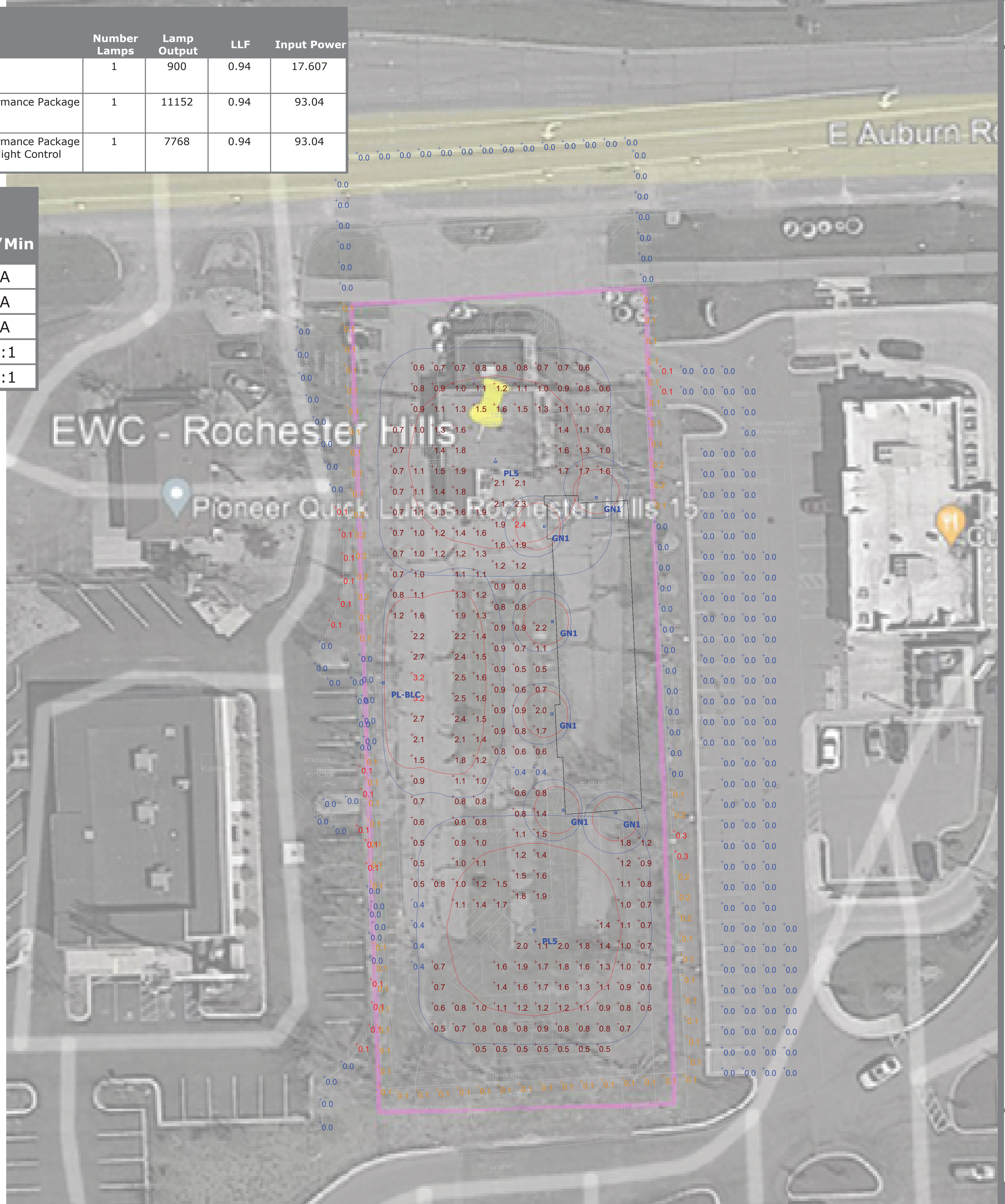
Symbol	Label	QTY	Manufacturer	Catalog	Description	Number Lamps	Lamp Output	LLF	Input Power
☒	GN1	6	BOCK LIGHTING	RA12-LED17	LED GOOSENECK FIXTURE	1	900	0.94	17.607
☒ □	PL5	2	Lithonia Lighting	DSX0 LED P4 30K 70CRI T5M	D-Series Size 0 Area Luminaire P4 Performance Package 3000K CCT 70 CRI Type 5 Medium	1	11152	0.94	93.04
☒ □	PL-BLC	1	Lithonia Lighting	DSX0 LED P4 30K 70CRI BLC3	D-Series Size 0 Area Luminaire P4 Performance Package 3000K CCT 70 CRI Type 3 Extreme Backlight Control	1	7768	0.94	93.04

Description	Symbol	Avg	Max	Min	Max/Min	Avg/Min
PROPERTY LINE - CULVERS	+	0.0 fc	0.1 fc	0.0 fc	N/A	N/A
PROPERTY LINE - PENNZOIL	+	0.0 fc	0.1 fc	0.0 fc	N/A	N/A
PROPERTY LINE - PERIMETER	+	0.1 fc	0.3 fc	0.0 fc	N/A	N/A
VACUUM & PARKING SPACES	+	1.2 fc	2.4 fc	0.4 fc	6.0:1	3.0:1
DRIVING LANES	+	1.2 fc	3.2 fc	0.4 fc	8.0:1	3.0:1

- Note**
1. POLE LIGHTS MOUNTED AT 17' AFG
 2. 15' POLE ON A 2' POLE BASE
 3. GOOSENECK WALL SCONCES MOUNTED AT 10' AFG

All exterior lighting in non-residential districts shall incorporate automatic timers and shall be turned off between the hours of midnight and sunrise, except for lighting necessary for security purposes or accessory to a use that continues after midnight. Security lighting shall, to the extent practical, use sensors and dim or turn off when there is no activity on site.

Clarify comment. Comment indicates gooseneck fixtures, detail of wall mounted lighting does not depict that type of fixture.



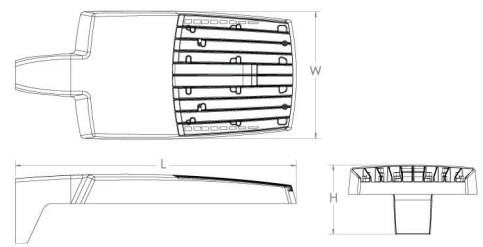


R5X2 LED Area Luminaire



Specifications

EPA (ft²@0°): 0.69 ft² (0.06 m²)
 Length: 29.3" (74.4 cm) (SPA mount)
 Width: 13.4" (34.0 cm)
 Height: 3.0" (7.6 cm) Main Body
 7.2" (18.3 cm) Arm
 Weight: (SPA mount) 30.0 lbs (13.6 kg)
Lighting cannot exceed 3000k



Catalog Number	
Notes	
Type	

Introduction

The new R5X LED Area family delivers maximum value by providing significant energy savings, long life and outstanding photometric performance at an affordable price. The R5X2 delivers 11,000 to 31,000 lumens allowing it to replace 250W to 1000W HID luminaires.

The R5X features an integral universal mounting mechanism that allows the luminaire to be mounted on most existing drill hole patterns. This "no-drill" solution provides significant labor savings. An easy-access door on the bottom of mounting arm allows for wiring without opening the electrical compartment. A mast arm adaptor, adjustable integral splitter and other mounting configurations are available.

Ordering Information

EXAMPLE: R5X2 LED P6 40K R3 MVOLT SPA DDBXD

Series	Performance Package	Color	Distribution	Voltage	Mounting
R5X2 LED	P1 P2 P3 P4 P5 P6	30K 3000K 5000K	R2 R3 R3S R4 R4S R5 R5S AFR AFR80 AFR90	MVOLT (120V-277V) ¹ XVOLT (120V-480V) ^{1,2} XVOLT (277V-480V) ^{1,2} 208 ³ 277 ³ 347 ³ 480 ³	SPA Square pole mounting (1.0" min. SQ pole for 1 at 90°, 3.5" min. SQ pole for 2, 3, 4 at 90°) RPA Round pole mounting (1.2" min. dia. RHP pole for 1 at 90°, 2 at 180°, 3 at 120°) MA Mast arm adaptor (fit 2-3/8" OD horizontal tension) IS Adjustable splitter (fits 2-3/8" OD tension) WBA Wall bracket ⁴ WBASC Wall bracket with surface conduit box AASP Adjustable tilt arm square pole mounting ⁴ AARP Adjustable tilt arm round pole mounting ⁴ AAMB Adjustable tilt arm with wall bracket ⁴ AAMWSC Adjustable tilt arm wall bracket and surface conduit box ⁴

Options

Options	Shipped Installed	Shipped Separately (requires some field assembly)	Finish
HS House-side shield ⁵	*Standalone and Networked Sensors/Controls (factory default settings, see table page 9)		DDBXD Dark Bronze
PE Photocell, bottom style ⁶	NLMMR2 nLight AIR generation 2.1 ^{6,7,8}		DBXD Black
PEK Photocell, external bracket, adjustable ⁶	PIRNB Networked, 90° non-irradiant ambient sensor (for use with NLMMR2) ^{6,7,8}		DNAXD Natural Aluminum
PER Seven-wire wireless-back receptacle only (no control) ^{6,7,8,9}	BAA Bay America(n) Act Compliant		DNWDX White
CE34 Conduit entry 3/4" NPT (Qty 2)	*Note: PIRNB with nLight Air can be used as a standalone dimming sensor with out-of-box settings or as a wireless networked solution. See factory default settings table. Sensor coverage pattern is affected when luminaires are tilted.		DNBTD Textured Dark Bronze
SF Single face (120, 277, 347) ¹			DRLBD Textured Dark
DF Double face (208, 240, 480) ¹			DNLAXD Textured Natural Aluminum
SPODRV 20KV surge pack (10KV standard)			DWHCKD Textured White
FAO Field adjustable output ¹⁰			
DMG 0-10V dimming (wired out back of housing for external control) (control ordered separately) ¹⁰		ESS External gear thrust ¹¹	
DS Dual switching ¹¹		ESVP External gear tail rise (360° around light aperture) ¹¹	
		BS Bolt spikes ¹¹	

LITHONIA LIGHTING COMMERCIAL OUTDOOR
 One Lithonia Way • Cary, Georgia 30012 • Phone: 1-800-705-SERV (7378) • www.lithonia.com
 © 2011-2021 Acuity Brands Lighting Inc. All rights reserved.



ARC2 LED Architectural Wall Luminaire



Specifications

Depth (D1): 9.25"
 Depth (D2): 7.5"
 Height: 5"
 Width: 14"
 Weight: (without options) 11 lbs



Catalog Number	
Notes	
Type	

Introduction

The Lithonia Lighting ARC LED wall-mounted luminaires provide both architectural styling and visually comfortable illumination while providing the high energy savings and low initial costs for quick financial payback.

ARC2 delivers up to 6,500 lumens with a soft, non-pixelated light source, creating a visually comfortable environment. It offers integrated emergency battery backup options, including an 6W cold temperature option, making it suitable for pedestrian scale applications in any environment.

ARC LED Family Overview

Luminaire	Standard EM, 0°C	Approximate Lumens (4000K)
ARC1 LED	4W	P1: 1,500, P2: 2,000, P3: 3,000, P4: 4,000, P5: 6,500
ARC2 LED	4W	P1: 1,500, P2: 2,000, P3: 3,000, P4: 4,000, P5: 6,500

Ordering Information

EXAMPLE: ARC2 LED P2 40K MVOLT PE DDBXD

Series	Package	Voltage	Options	Finish
ARC2 LED	P1: 1,500 Lumens P2: 2,000 Lumens P3: 3,000 Lumens P4: 4,000 Lumens P5: 6,500 Lumens	MVOLT 347 ³	EAHW Emergency battery backup, EEC compliant (40V, 0°C min) ¹ EBWC Emergency battery backup, EEC compliant (8V, -20°C min) ¹ PE Button-type photocell for dusk-to-dawn operation DMG 0-10V dimming wires pulled outside fixture (for use with an external control, ordered separately) ¹⁰ SPODRV 6KV surge protection ¹ FAO Field adjustable light output device. Allow for easy adjustment to the desired light levels, from 20% to 100%. ¹⁰	DDBXD Dark Bronze DBXD Black DNAXD Natural Aluminum DNWDX White DNBTD Textured Dark Bronze DRLBD Textured Dark DNLAXD Textured Natural Aluminum DWHCKD Textured White

Accessories

Accessories
WSBR10080U Surface - mounted back box (sentry finish)

LITHONIA LIGHTING COMMERCIAL OUTDOOR
 One Lithonia Way • Cary, Georgia 30012 • Phone: 1-800-705-SERV (7378) • www.lithonia.com
 © 2011-2021 Acuity Brands Lighting Inc. All rights reserved.



FEATURES & SPECIFICATIONS

INTENDED USE — These specifications are for USA standards only. Square Straight Steel is a general purpose light pole for up to 39-foot mounting heights. This pole provides a robust yet cost effective option for mounting area lights and floodlights.

CONSTRUCTION — Pole Shaft: The pole shaft is of uniform dimension and wall thickness and is made of a weldable grade, hot rolled, commercial-quality steel tubing with a minimum yield of 55 KSI (11-gauge, 1190"), or 50 KSI (0-gauge, 1193"). Shaft is one-piece with a full-length longitudinal high-frequency electric resistance weld. Uniformly square in cross-section with flat sides, small corner radii and excellent torsional qualities. Available shaft widths are 4", 5" and 6".

Pole Top: A flush non-metallic black top cap is provided for all poles that will receive drilling patterns for side-mount luminaire arm assemblies or when ordered with P1 option.

Handhole: A reinforced handhole with grounding provision is provided at 18" from the base on side A. Positioning the handhole lower may not be possible and requires engineering review; consult Tech Support/Outdoor for further information. Every handhole includes a cover and cover attachment hardware. The handhole has a nominal dimension of 2.5" x 5".

Base Cover: A durable ABS plastic two-piece full base cover, finished to match the pole, is provided with each pole assembly. Additional base cover options are available upon request.

Anchor Base/ Bolts: Anchor base is fabricated from steel that meets ASTM A36 standards and can be altered to match existing foundations; consult factory for modifications. Anchor bolts are manufactured to ASTM F1554 Standards grade 55, (S 55) minimum yield strength and tensile strength of 75-95 KSI. Top threaded portion (nominal 1.7") hot-dipped galvanized per ASTM A-153.

HARDWARE — All structural fasteners are high-strength galvanized carbon steel. All non-structural fasteners are galvanized or zinc-plated carbon steel or stainless steel.

FINISH — Extra durable standard powder-coat finishes include Dark Bronze, White, Black, Medium Bronze and Natural Aluminum colors. Classic finishes include Sandstone, Charcoal Gray, Terra Green, Bright Red and Steel Blue colors. Architectural Colors and Special Finishes are available by quote and include, but are not limited to Hot-dipped Galvanized, Paint over Hot-dipped Galvanized, RAL Colors, Custom Colors and Extended Warranty Finishes. Factory-applied primer paint finish is available for customer field-paint applications.

BUY AMERICAN — Product with the BAA option is assembled in the USA and meets the Buy America(n) government procurement requirements under FAR, DFARS and DOT. Please refer to www.acuitybrands.com/buy-american for additional information.

INSTALLATION — Do not erect poles without having features installed. Factory-supplied templates must be used when setting anchor bolts. Lithonia Lighting will not accept claims for incorrect anchorage placement due to failure to use Lithonia Lighting factory templates. If poles are stored outside, all protective wrapping must be removed immediately upon delivery to prevent finish damage. Lithonia Lighting is not responsible for the foundation design.

WARRANTY — 1-year limited warranty. Complete warranty terms located at: www.acuitybrands.com/support/warranty/terms-and-conditions

NOTE: Actual performance may differ as a result of end-user environment and application. Specifications subject to change without notice.

Catalog Number	
Notes	
Type	

Anchor Base Poles



SSS SQUARE STRAIGHT STEEL



CLEAN

EXPRESS AUTO WASH

10 E Auburn Rd,
Rochester Hills, MI 48307

New-Build Project
Concept Elevation Package

08.25.2023

CLEAN

EXPRESS AUTO WASH





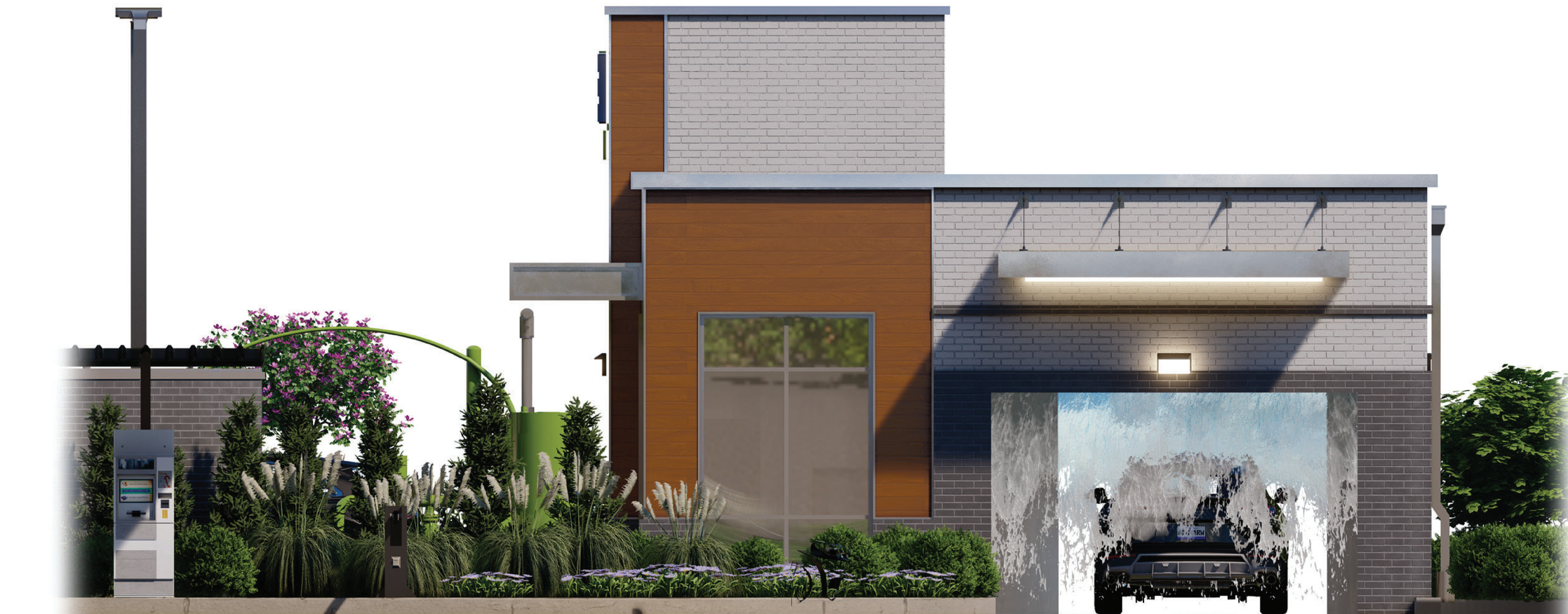
EAST

WEST





NORTH



SOUTH





E Auburn Rd

S Rochester Rd



CLEAN
EXPRESS AUTO WASH
FREE VACUUMS

CLEAN
EXPRESS AUTO WASH
FREE VACUUMS

CLEAN
EXPRESS AUTO WASH



FREE VACUUMS

 CLEAN
EXPRESS AUTO WASH



FREE VACUUMS

CLEAN
EXPRESS AUTO WASH

CLEAN EXPRESS Auto Wash Process
What you see is what you get!

- ① Pre Wash
- ② Wash
- ③ Rinse
- ④ Dry
- ⑤ Vacuum
- ⑥ Wax
- ⑦ Final Rinse
- ⑧ Final Dry
- ⑨ Final Shine

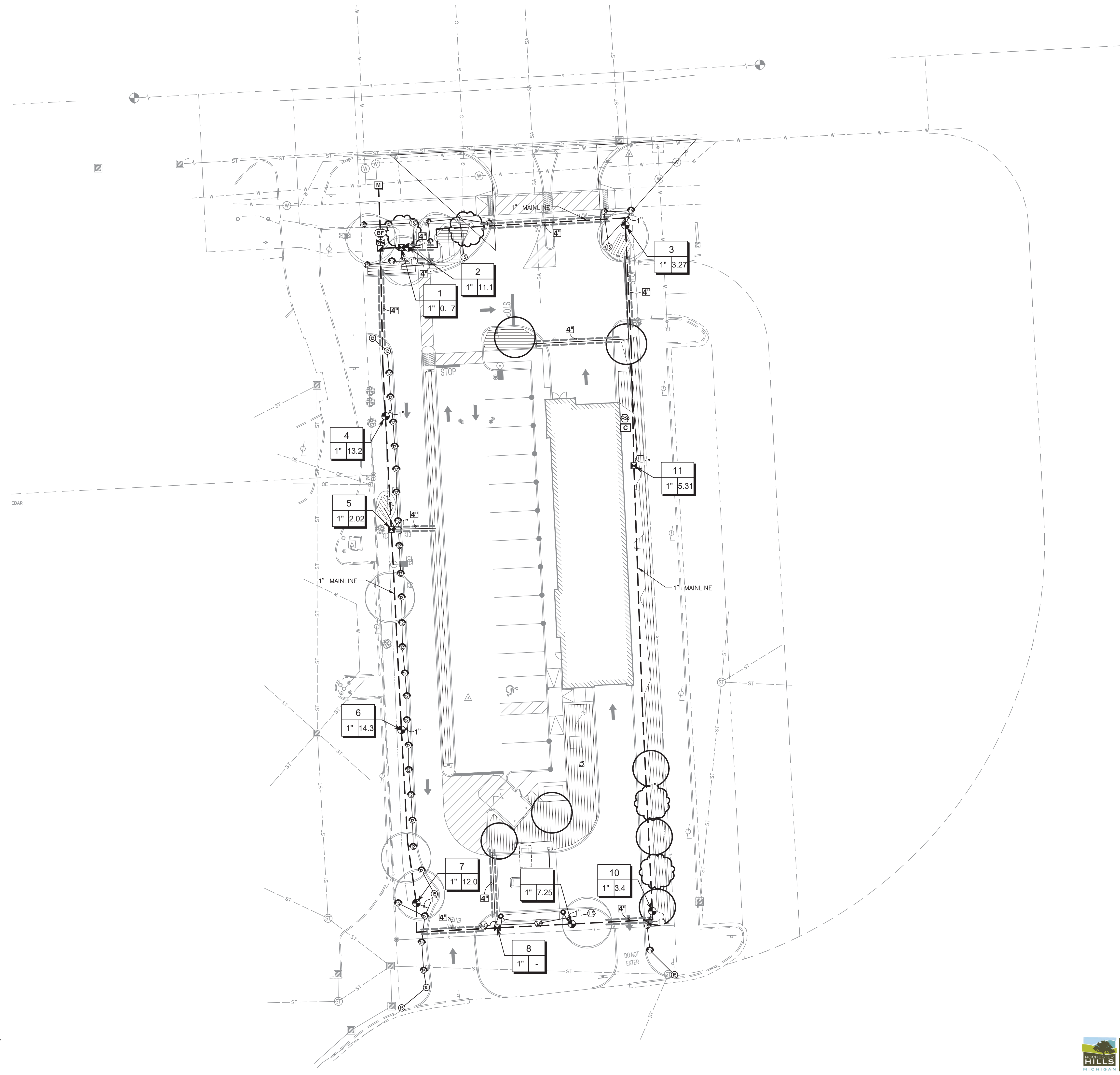
CLEAN EXPRESS
Auto Wash



CLEAN

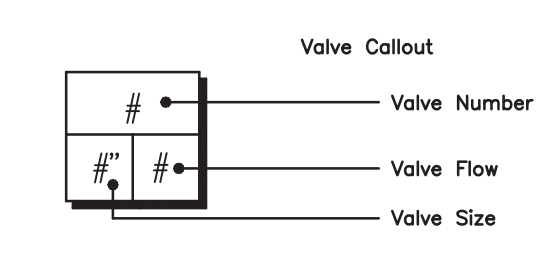
EXPRESS AUTO WASH





IRRIGATION SCHEDULE

SYMBOL	MANUFACTURER/MODEL
EST LCS RCS CST SST	Rain Bird 1804 15 Strip Series
Q T H F	Rain Bird 1804 8 Series MPR
Q T H TQ F	Rain Bird 1804 12 Series MPR
Q T H TQ F	Rain Bird 1804 15 Series MPR
18HE-VAN 12 12HE-VAN 18HE-VAN 15 15HE-VAN	Rain Bird 1804 HE-VAN Series
R-VAN18 R-VAN18-368	Rain Bird R-VAN18 1804-SAM-P45
SYMBOL	MANUFACTURER/MODEL
1.5	Rain Bird 5004-FC, FC 1.5
3.0	Rain Bird 5004-FC, FC 3.0
SYMBOL	MANUFACTURER/MODEL
X	Rain Bird XGZP6A-100-PRF
[Hatched Area]	Area to Receive Dripline Rain Bird XFD-06-18 (22)
SYMBOL	MANUFACTURER/MODEL
[Globe]	Rain Bird P6A Globe
[5-RC]	Rain Bird 5-RC
[T-113-K]	Nibco T-113-K
[BF]	Zurn 375 1"
[C]	Rain Bird ESP&LXME with (O) ESPLXMSM12
[WR2-RFC]	Rain Bird WR2-RFC
[M]	Water Meter 1"
[Solid Line]	Irrigation Lateral Line: PVC Class 200 SDR 21
[Dashed Line]	Irrigation Mainline: PVC Class 200 SDR 21
[Double Dashed Line]	Pipe Sleeve: PVC Schedule 40



**CLEAN EXPRESS
 CAR WASH
 ROCHESTER HILLS, MI**

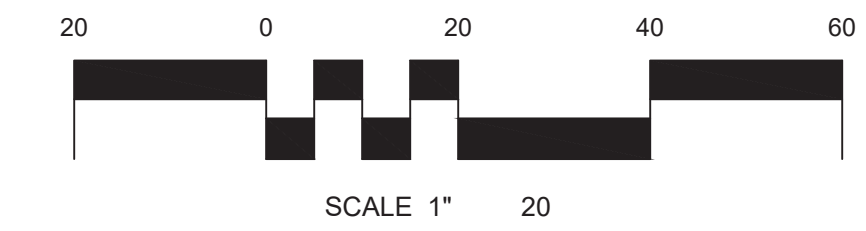
Revisions:

Project Number:
 Drawn by:
JM
 Checked by:
DB
 Date:
8/24/2023

IRRIGATION PLAN

Sheet Name:
 Submission:

Sheet Number:
1.1
 Copyright 2015 by WC3 Design. All rights reserved. No part of these drawings may be copied or reproduced in whole or part without the express written consent of owner.



C:\Users\jbedwa\OneDrive - Wayne\Documents\2023\Projects\Clean Express\Drawings\11.1
 8/24/2023 10:00 AM



CLEAN EXPRESS
CAR WASH
ROCHESTER HILLS, MI

Revisions:

Project Number:

Drawn by:
JM
Checked by:
DB
Date:
8/24/2023

IRRIGATION PLAN

Sheet Number:

1.1.2

Copyright 2015 by WC3 Design. All rights reserved. No part of these drawings may be copied or reproduced in whole or part without the express written consent of owner.

IRRIGATION NOTES
THESE NOTES ARE PRESENTED AS A "SUMMARY" OF THE WRITTEN SPECIFICATIONS ISSUED FOR THE PROJECT. REFER TO THE WRITTEN SPECIFICATIONS, IF INCLUDED, FOR ADDITIONAL DETAIL AND FULL PROJECT REQUIREMENTS.

- THE IRRIGATION SYSTEM DESIGN IS BASED ON 60 STATIC PRESSURE (PSI) AND MAXIMUM FLOW OF 15 GALLONS PER MINUTE(GPM). THE IRRIGATION CONTRACTOR SHALL VERIFY THE PRESSURE AND FLOW PRIOR TO COMMENCEMENT OF CONSTRUCTION. REPORT TO THE OWNER OR OWNER'S REPRESENTATIVE ANY DIFFERENCES BETWEEN THE PRESSURE INDICATED AND THE ACTUAL PRESSURE READING AT THE POINT OF CONNECTION.
- THE PIPE ROUTING SHOWN IS DIAGRAMMATIC ONLY. ALL PIPING, VALVES, HEADS, ETC SHOWN WITHIN PAVED AREAS ARE FOR DESIGN CLARIFICATION ONLY. PRESSURE LOSS CALCULATIONS ARE BASED ON THE PIPE ROUTING AS SHOWN. SIGNIFICANT DEVIATIONS FROM THE ROUTING SHOWN SHOULD BE AVOIDED.
- DO NOT WILLINGLY INSTALL THE SPRINKLER SYSTEM AS SHOWN ON THE DRAWINGS WHEN IT IS OBVIOUS IN THE FIELD THAT OBSTRUCTIONS, GRADE DIFFERENCES, OR DIFFERENCES IN THE DIMENSIONS OF THE CONSTRUCTED AREAS EXIST THAT MIGHT NOT HAVE BEEN CONSIDERED IN THE IRRIGATION DESIGN OR CHANGES HAVE OCCURRED IN THE SITE PLAN. SUCH OBSTRUCTIONS OR DIFFERENCES SHOULD BE BROUGHT TO THE ATTENTION OF THE IRRIGATION DESIGNER AND THE GENERAL CONTRACTOR IMMEDIATELY. SHOULD THE IRRIGATION CONTRACTOR PROCEED WITH THE INSTALLATION WITHOUT NOTIFYING THE IRRIGATION DESIGNER AND THE GENERAL CONTRACTOR, THE IRRIGATION CONTRACTOR ASSUMES FULL RESPONSIBILITY FOR ANY AND ALL REVISIONS / RECONSTRUCTION NECESSARY.
- IT IS THE RESPONSIBILITY OF THE IRRIGATION CONTRACTOR TO FAMILIARIZE HIMSELF / HERSELF WITH THE SITE, ALL GRADE DIFFERENCES, LOCATIONS OF WALLS, AND INSTALLED UTILITIES. COORDINATE WORK WITH THE OWNER OR GENERAL CONTRACTOR AND OTHER SUBCONTRACTORS FOR THE LOCATION AND INSTALLATION OF PIPE SLEEVES UNDERNEATH PAVEMENT AND THROUGH WALLS.
- DUE TO THE SCALE OF THE DRAWING, IT IS NOT POSSIBLE TO INDICATE ALL OFFSETS, FITTINGS, JOINTS, ETC. WHICH MAY BE REQUIRED. THE IRRIGATION CONTRACTOR SHALL CAREFULLY INVESTIGATE THE STRUCTURAL AND FINISHED CONDITIONS AFFECTING ALL OF HIS/HER WORK AND PLAN HIS/HER WORK ACCORDINGLY, FURNISHING SUCH FITTINGS, ETC. AS MAY BE REQUIRED TO MEET SUCH CONDITIONS. ALL WORK SHALL BE INSTALLED IN SUCH A MANNER AS TO AVOID CONFLICTS BETWEEN IRRIGATION SYSTEM COMPONENTS, LANDSCAPE PLANTING, AND ARCHITECTURAL FEATURES.
- FLUSH ALL LINES AND HEADS PRIOR TO INSTALLING NOZZLES. ADJUST NOZZLE SPRAY ARC AND RADIUS FOR OPTIMUM PERFORMANCE TO PREVENT OVERSPRAY ONTO PAVED SURFACES OR FACE OF BUILDING AS MUCH AS POSSIBLE TO FIT THE SITE CONDITIONS. THROTTLE FLOW CONTROL AT EACH VALVE FOR OPTIMUM OPERATING PRESSURE FOR EACH ZONE.
- ALL SPRINKLER HEADS SHALL BE SET PERPENDICULAR TO FINISHED GRADE OF THE AREA TO BE IRRIGATED UNLESS OTHERWISE NOTED.
- WHEN VERTICAL OBSTRUCTIONS (POLES, SIGNS, TREES, HYDRANTS, ETC) INTERFERE WITH THE SPRAY PATTERN OF THE HEADS SO AS TO PREVENT PROPER COVERAGE, THE CONTRACTOR SHALL FIELD ADJUST THE SPRINKLER SYSTEM BY INSTALLING A QUARTER, THIRD, OR HALF CIRCLE HEAD AT THE SIDES OF THE OBSTRUCTION SO AS TO PROVIDE PROPER COVERAGE. ALL ADJUSTMENTS SHALL BE MADE AT NO ADDITIONAL COST.
- USE TEFLON TAPE ON ALL MALE PIPE THREADS ON PVC PIPE, SWING JOINTS, AND VALVE ASSEMBLIES.
- INSTALL VALVE BOXES 18-INCHES FROM AND PERPENDICULAR TO WALKS, CURBS, BUILDING, OR LANDSCAPE FEATURES. AT MULTIPLE VALVE BOX GROUPS, EACH BOX SHALL BE INSTALLED A MINIMUM OF 12-INCHES APART.
- ALL VALVES SHALL BE PLACED IN VALVE BOXES AS SHOWN IN THE DETAILS AND ALL ELECTRICAL CONNECTIONS SHALL BE SEALED WITH WATERPROOF CONNECTORS.
- 120-VOLT ELECTRICAL POWER AT THE CONTROLLER SHALL BE PROVIDED BY OTHERS. IT IS THE RESPONSIBILITY OF THE IRRIGATION CONTRACTOR TO MAKE THE FINAL HOOK-UP FROM THE POWER PROVIDED TO THE CONTROLLER.
- PROVIDE AS-BUILT DRAWINGS WITHIN 21 DAYS UPON COMPLETION OF THE IRRIGATION INSTALLATION.
- THERE SHALL BE NO SUBSTITUTIONS OR CHANGES TO THE IRRIGATION DESIGN ALLOWED WITHOUT DIRECT, WRITTEN APPROVAL FROM THE IRRIGATION CONSULTANT OR THE LANDSCAPE ARCHITECT. CONTACT WC3 DESIGN FOR INFORMATION.
- ALL SPRINKLERS, VALVES AND VALVE BOXES SHALL BE PLACED 5' AWAY FROM ANY RADIUS OF CURB AS SHOWN IN DETAILS.
- IRRIGATION CONTRACTOR SHALL PROVIDE THE FIRST WINTERIZATION BLOW OUT. IN ADDITION, HE SHALL PROVIDE THE SPRING TURN ON. ALL NECESSARY HEAD ADJUSTMENTS SHALL BE MADE AT THAT TIME AND REPLACE OR REPAIR ANY WARRANTY ITEMS. THESE ITEMS SHALL BE INCLUDED WITH BID.
- PROVIDE GROUNDING ALONG CONTROLLER WIRE RUN PER MANUFACTURES INSTALLATION RECOMMENDATIONS.
- IRRIGATION CONTRACTOR TO REPAIR OR REPLACE ANY EXISTING UTILITY, LOW VOLTAGE WIRE OR OTHER EXISTING EQUIPMENT DAMAGED DURING IRRIGATION INSTALLATION.

POWER TO THE CONTROLLER SHALL BE THE ELECTRICIAN ON SITE. FINAL HOOK UP FROM THE ELECTRIC TO THE CONTROLLER SHALL BE BY IRRIGATION CONTRACTOR.

