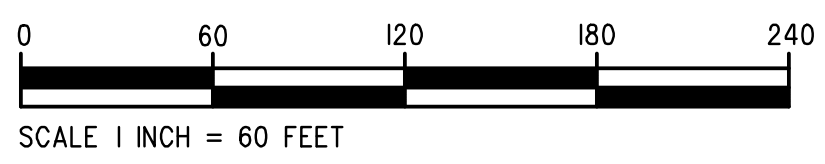


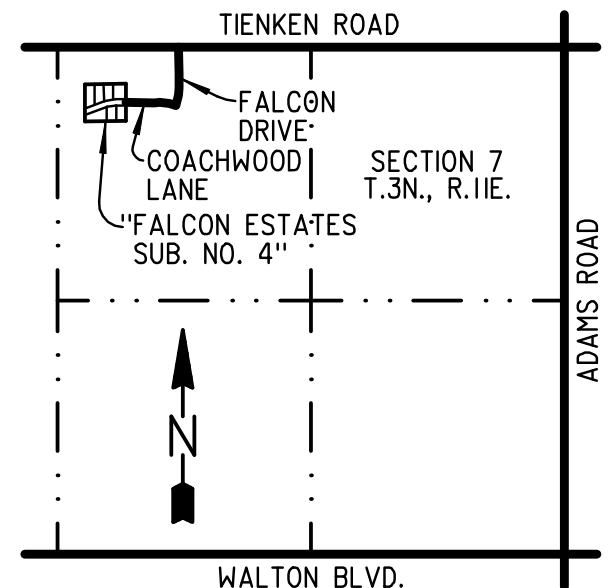
"FALCON ESTATES SUB. NO. 4"

PART OF THE NORTHWEST 1/4 OF SECTION 7, T.3N., R.11E.,
CITY OF ROCHESTER HILLS, OAKLAND COUNTY, MICHIGAN.

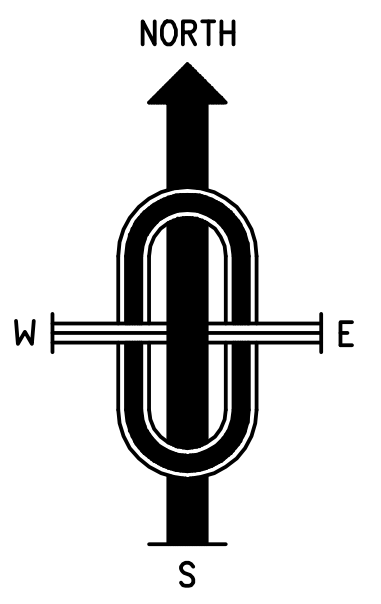


PLAT LEGEND

ALL DIMENSIONS ARE IN FEET.
ALL CURVILINEAR DIMENSIONS ARE SHOWN ALONG THE ARC.
(R.) DENOTES RADIAL. (N.R.) DENOTES NOT RADIAL.
THE SYMBOL "○" INDICATES A SET MONUMENT WHICH IS A 1/2" DIAMETER STEEL BAR 36" LONG, ENCASED IN 4" DIAMETER CONCRETE.
THE SYMBOL "⊗" INDICATES A FOUND MONUMENT WHICH IS A 1/2" DIAMETER STEEL BAR, ENCASED IN 4" DIAMETER CONCRETE.
ALL LOT MARKERS ARE 3/4" INSIDE DIAMETER IRON PIPES AND ARE 18" LONG. "NO IDENTIFICATION CAPS"
ALL BEARINGS ARE IN RELATION TO THE BEARING OF THE WEST LINE OF SECTION 7, T.3N., R.11E., CITY OF ROCHESTER HILLS, OAKLAND COUNTY, MICHIGAN AS DEPICTED ON THE PLAT OF "FALCON ESTATES SUB. NO. 3" RECORDED IN LIBER 253, PAGES 1 THRU 4.

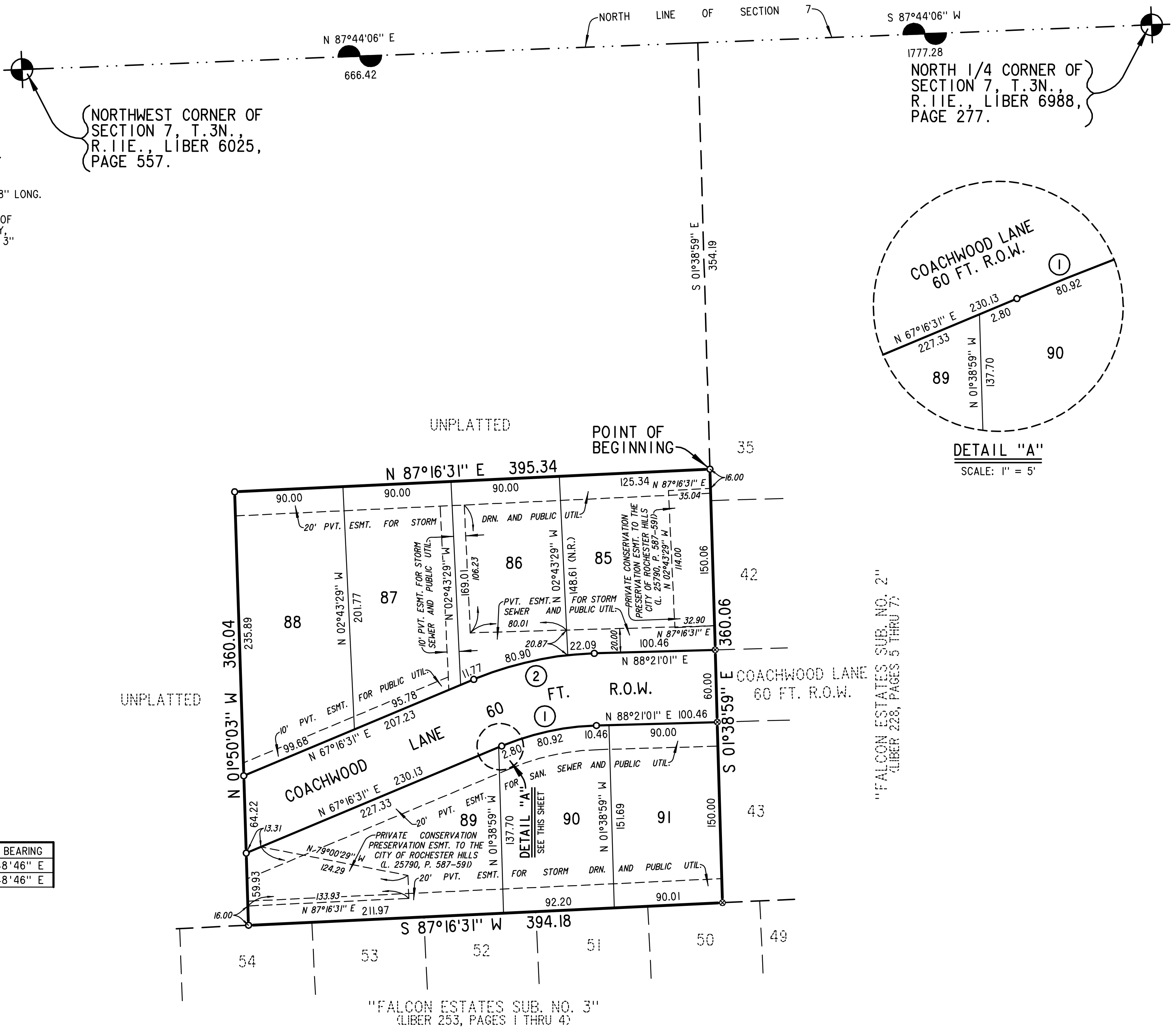


LOCATION MAP
NOT TO SCALE



CURVE DATA

NO.	RADIUS	ARC	DELTA	CHORD	CHORD BEARING
1	220.00	80.92	21°04'30"	80.47	N 77°48'46" E
2	280.00	102.99	21°04'30"	102.41	N 77°48'46" E



"FALCON ESTATES SUB. NO. 2"
(LIBER 228, PAGES 5 THRU 7)

"FALCON ESTATES SUB. NO. 3"
(LIBER 253, PAGES 1 THRU 4)

"FALCON ESTATES SUB. NO. 4"

PART OF THE NORTHWEST 1/4 OF SECTION 7, T.3N., R.11E.,
CITY OF ROCHESTER HILLS, OAKLAND COUNTY, MICHIGAN.

SURVEYOR'S CERTIFICATE

I, Mende Bezanovski, Surveyor, certify:

That I have surveyed, divided and mapped the land shown on this plat, described as follows: "FALCON ESTATES SUB. NO. 4" Part of the Northwest 1/4 of Section 7, T.3N., R.11E., City of Rochester Hills, Oakland County, Michigan, being more particularly described as follows: Beginning at a point which is N87°44'06"E 666.42 ft. along the North line of said Section 7 and S01°38'59" 354.19 ft. along the West line of "Falcon Estates Sub. No. 2" (Liber 228 of plats, Pages 5, 6 and 7, Oakland County Records) from the Northwest corner of said Section 7; thence continue Southerly along said line, a distance of 360.06 ft.; thence S87°16'31"W 394.18 ft. along (in part) the North line of "Falcon Estates Sub. No. 3" (Liber 253 of plats, Pages 1, 2, 3 and 4, Oakland County Records); thence N01°50'03"W 360.04 ft.; thence N87°16'31"E 395.34 ft. to the Point of Beginning. Containing 3.262 acres and comprising 7 Lots, numbered 85 through 91, both inclusive.

That I have made such survey, land division and plat by the direction of the owners of such land.

That such plat is a correct representation of all the exterior boundaries of the land surveyed and the subdivision of it.

That the required monuments and lot markers have been located in the ground or that surety has been deposited with the municipality as required by Section 125 of the Act.

That the accuracy of survey is within the limits required by Section 126 of the Act.

That the bearings shown on the plat are expressed as required by Section 126 (3) of the Act and as explained in the legend.

MCS Associates, Inc.
44444 Mound Road - Suite 100
Sterling Heights, Michigan 48314

DATE _____
Mende Bezanovski, P.S.
No. 49430

DATE _____
James J. Jones, P.E.
Vice President - No. 30562

PROPRIETOR'S CERTIFICATE

L & R Homes, Inc., a Michigan Corporation, duly organized and existing under the laws of the State of Michigan by Lorenzo Randazzo, President, and Serafina Randazzo, Secretary, as Proprietor, has caused the land to be surveyed, divided, mapped and dedicated as represented on this plat and that the streets are for the use of the public; that the public utility easements are private easements; and that all other easements are for the uses shown on the plat.

L & R Homes, Inc.
A Michigan Corporation
2490 Walton, Suite 203
Rochester Hills, Michigan 48309

Witness:

By:

Lorenzo Randazzo
President

Serafina Randazzo
Secretary

ACKNOWLEDGEMENT

STATE OF MICHIGAN)
)S.S.
County of Oakland)

Personally came before me this _____ day of _____, 20____, Lorenzo Randazzo, President, and Serafina Randazzo, Secretary of the above-named corporation, to me known to be the persons who executed the foregoing instrument and to me known to be such president and secretary of said corporation, and acknowledged that they executed the foregoing instrument as such officers as the free act and deed of said corporation, by its authority.

Notary Public _____ Oakland County, Michigan

My Commission Expires _____

"FALCON ESTATES SUB. NO. 4"

PART OF THE NORTHWEST 1/4 OF SECTION 7, T.3N., R.11E.,
CITY OF ROCHESTER HILLS, OAKLAND COUNTY, MICHIGAN.

COUNTY TREASURER'S CERTIFICATE

The records in my office show no unpaid taxes or special assessments for the five years preceding _____ involving the lands included in this plat.

Oakland County Treasurer, Deputy

COUNTY DRAIN COMMISSIONER'S CERTIFICATE

Approved on _____, 20____, as complying with Section 192 of Act 288, P.A. 1967, and the applicable rules and regulations published by my office in the County of Oakland.

John P. McCulloch
Oakland County Drain Commissioner

CERTIFICATE OF MUNICIPAL APPROVAL

I certify that this plat was approved by the City Council of the City of Rochester Hills, at a meeting held _____, 20____, and was reviewed and found to be in compliance with Act 288, P.A. 1967. Surety has been posted for the placing of monuments and lot markers within one year of the above date. Minimum lot area required by Section 186(2), Act 288 of P.A. 1967, has been waived and conforms with the legally adopted zoning and subdivision control ordinances of the City of Rochester Hills. Surety has been posted to insure the installation of public sewer and public water services.

Beverly A. Jasinski
City Clerk

COUNTY PLAT BOARD CERTIFICATE

This plat has been reviewed and is approved by the OAKLAND COUNTY PLAT BOARD on _____ as being in compliance with all of the provisions of Act 288, P.A. 1967, and the Plat Board's applicable rules and regulations.

Thomas A. Law
Chairperson
Board of County Commissioners

G. William Caddell,
County Clerk
Register of Deeds

Patrick M. Dohany
County Treasurer

Joseph C. Kapelczak, P.S.
County Plat Engineer

RECORDING CERTIFICATE

STATE OF MICHIGAN)
Oakland County)

This plat was received for record on the _____ day of _____, 20____ at _____ .M., and recorded in Liber _____ of Plats on Pages _____.

G. William Caddell,
County Clerk
Register of Deeds