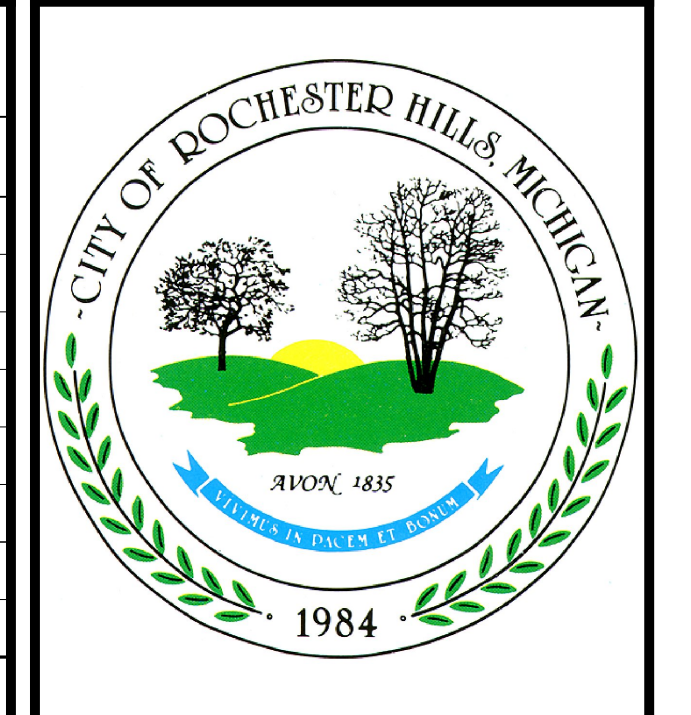


TIME: 13SEP2011 12:33
 PEN: TEL: FAX: (810) 464-6300
 CLG: TEL: FAX: (810) 464-6300
 QUEUE: V:\proj\Bldg
 DESIGN FILE: I:\2011\02\20110226\SS\1404.dwg
 USER NAME: K41\krc41

P12: MISCELLANEOUS QUANTITIES

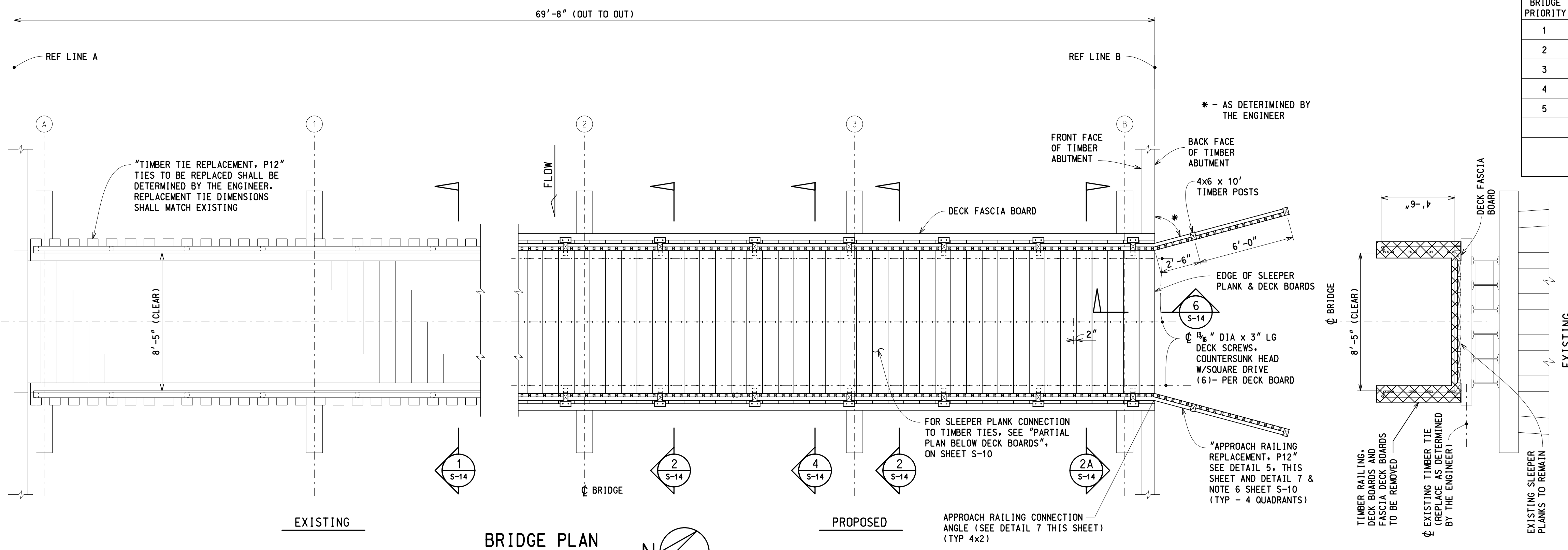
BRIDGE PRIORITY	PROJECT PRIORITY	PAY ITEM	UNIT	AMOUNT
1	2	TIMBER PILE REPAIR, P12	EA	12
2	11	TIMBER DECK REPLACEMENT, P12	SFT	700
3	12	TIMBER TIE REPLACEMENT, P12	EA	20
4	13	TIMBER RAILING REPLACEMENT, P12	FT	140
5	14	APPROACH RAILING REPLACEMENT, P12	LS	1
		TRAFFIC CONTROL - PEDESTRIAN, P12	LS	1
		MOBILIZATION, P12	LS	1



HRC
 HUBBELL, ROTH & CLARK, INC.
 Consulting Engineers
 555 HULET DRIVE P.O. BOX 824
 BLOOMFIELD HILLS, MICH. 48303-0824
 PHONE: (248) 454-6300
 FAX (1st Floor): (248) 454-6312
 FAX (2nd Floor): (248) 338-2592
 WEB SITE: http://www.hrc-engr.com

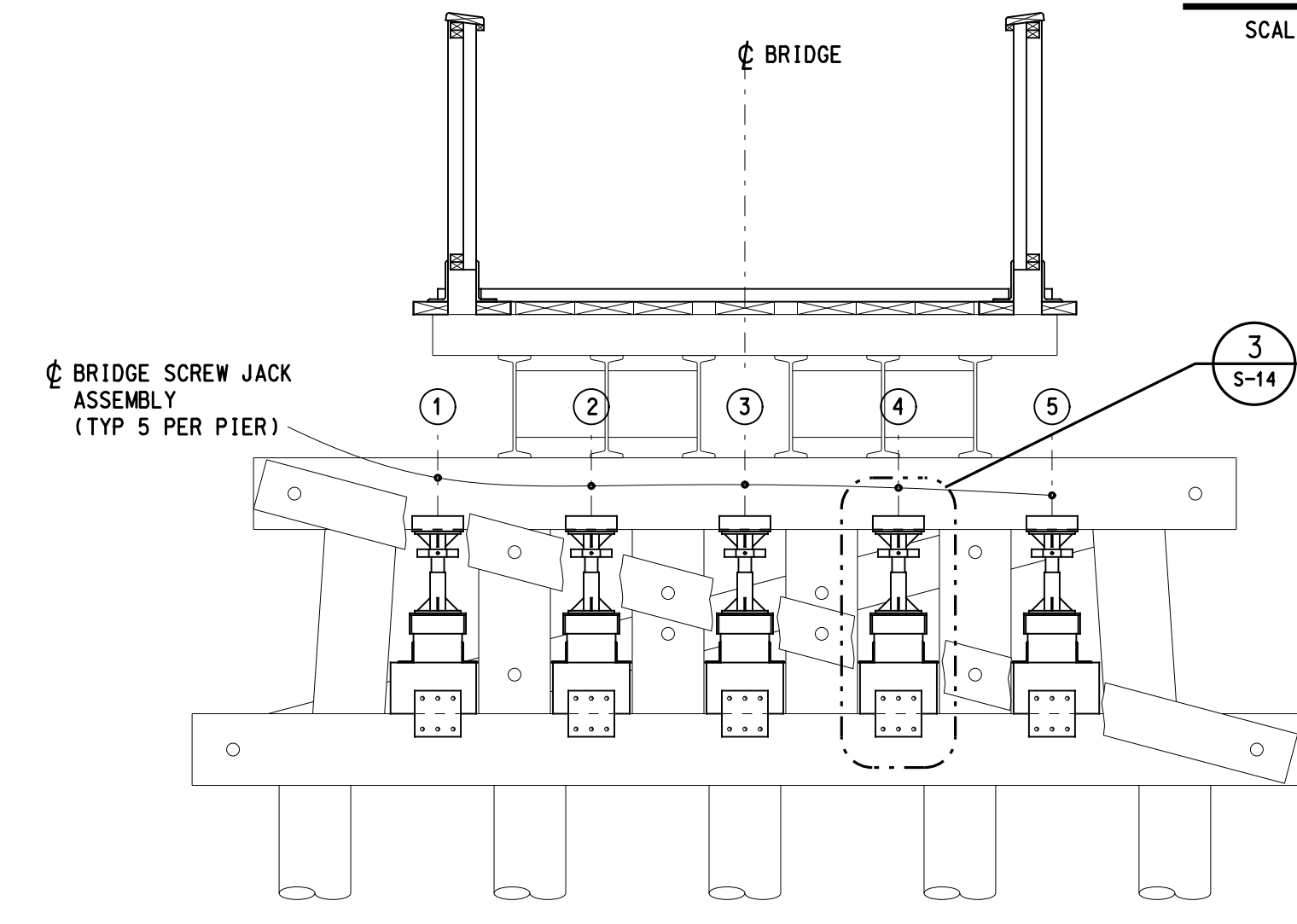
DATE	ADDITIONS AND/OR REVISIONS
09-13-11	RE-ISSUED FOR BIDS
09-2-11	ISSUED FOR BIDS
08-25-11	75% FOR OWNER'S REVIEW
08-17-11	50% FOR OWNER'S REVIEW

DESIGNED R.B.N.
 DRAWN K.R.K.
 CHECKED F.E.S.
 APPROVED W.H.A.
V:\2010\2\2010226\SS\1404.dwg

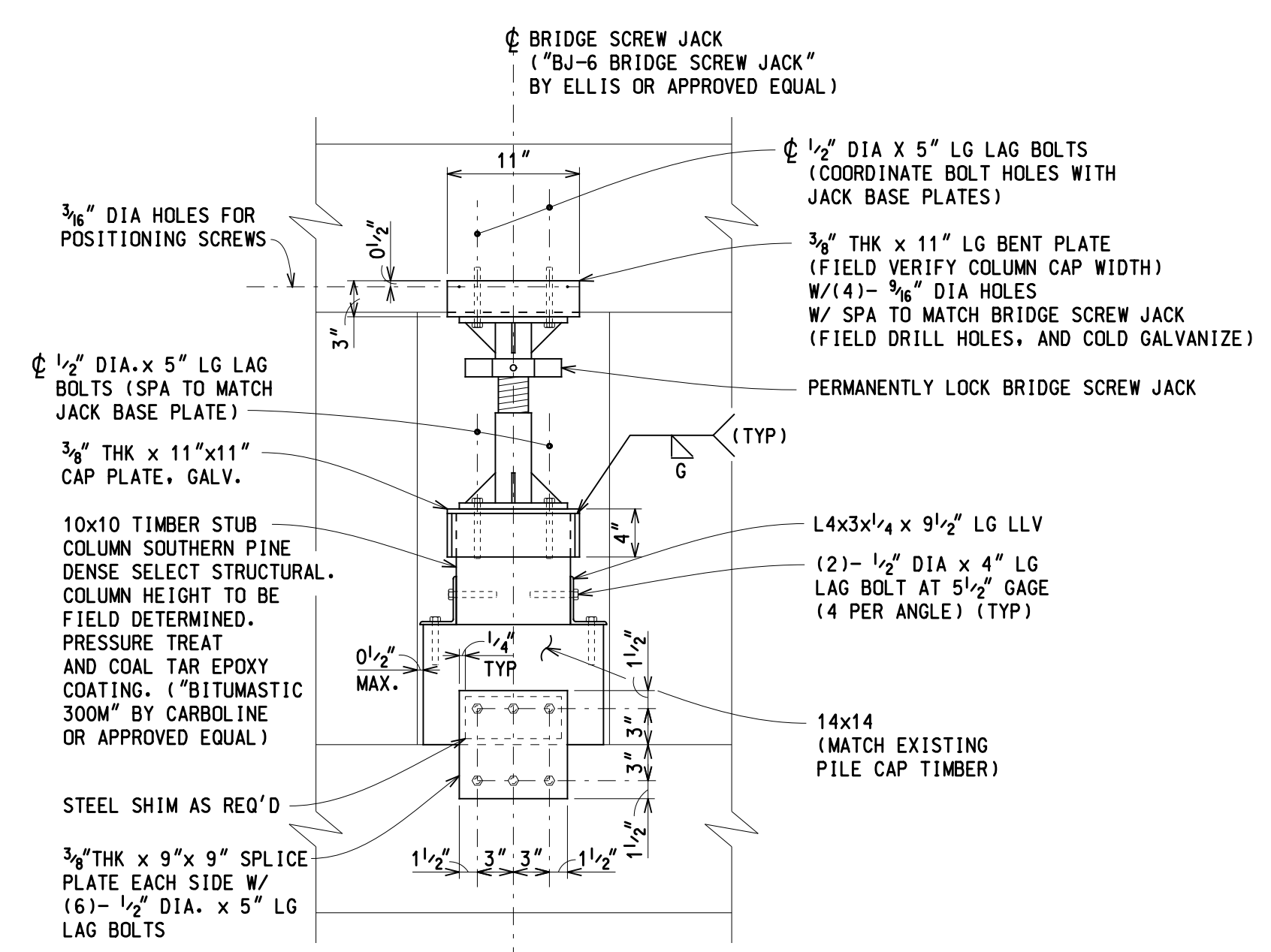


NOTES:
 1. NOTES 1 THRU 7 ON SHEET S-10 APPLY.

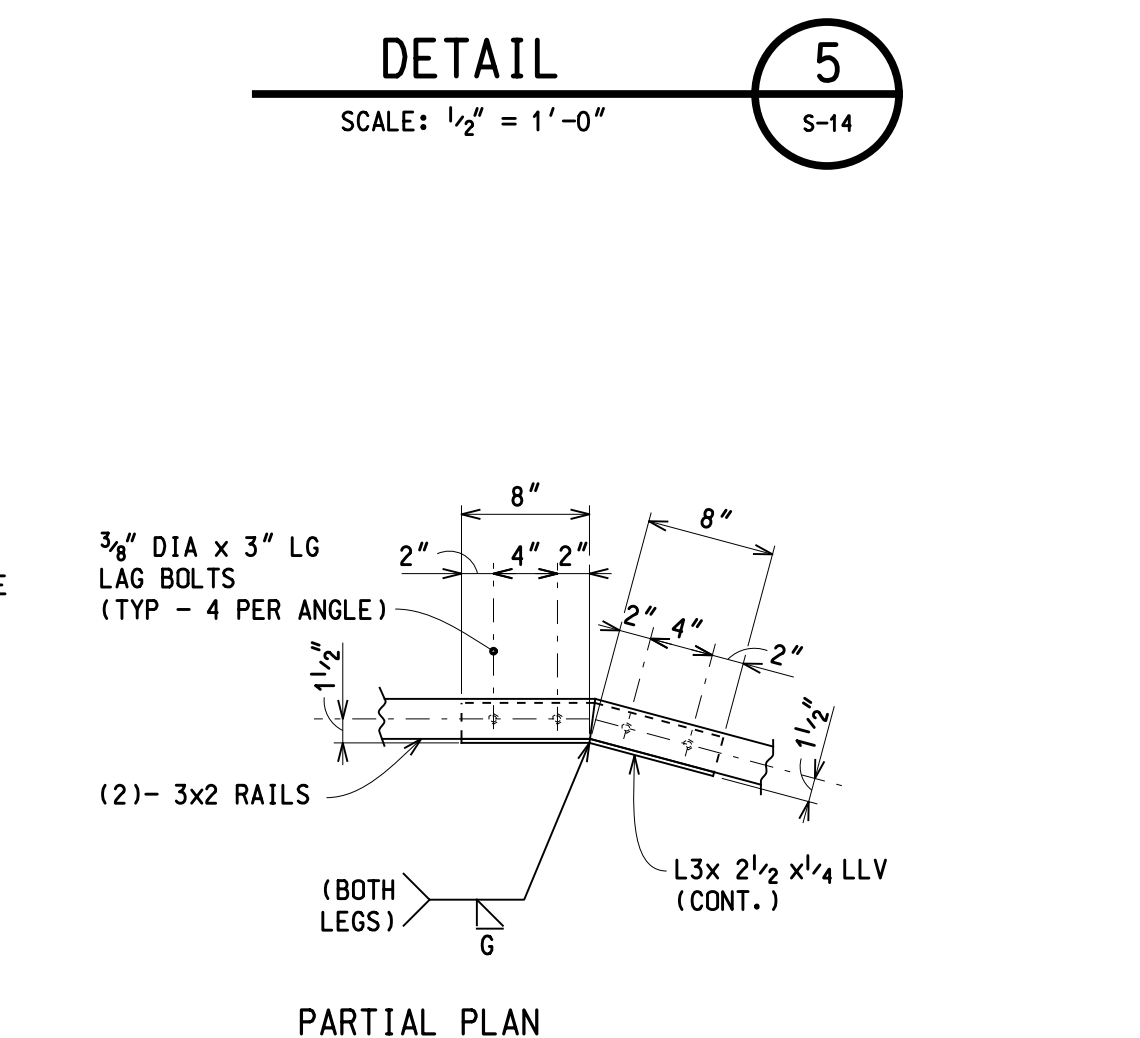
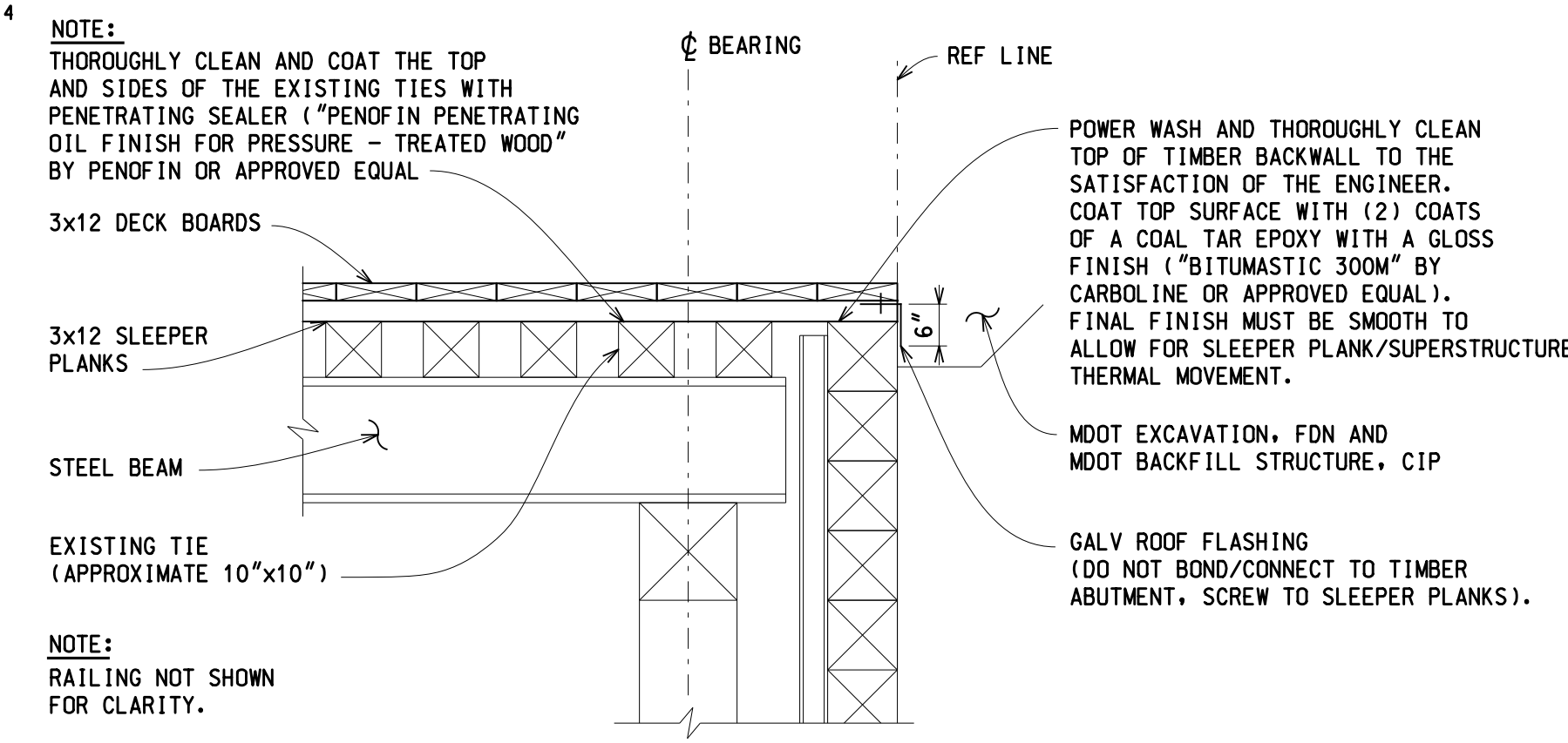
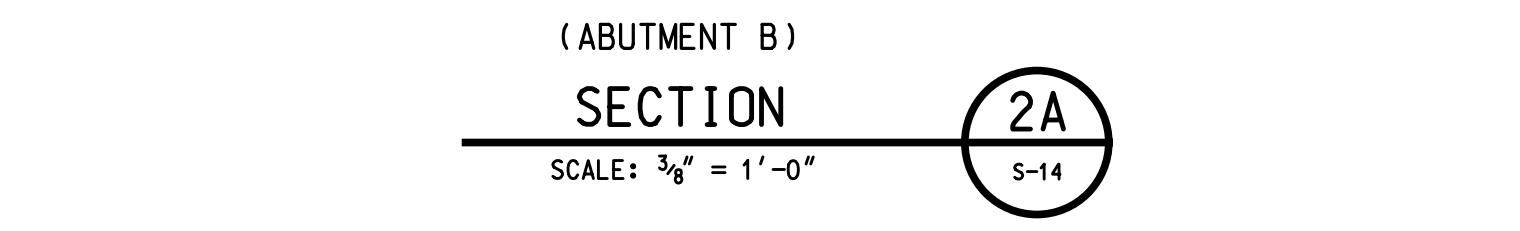
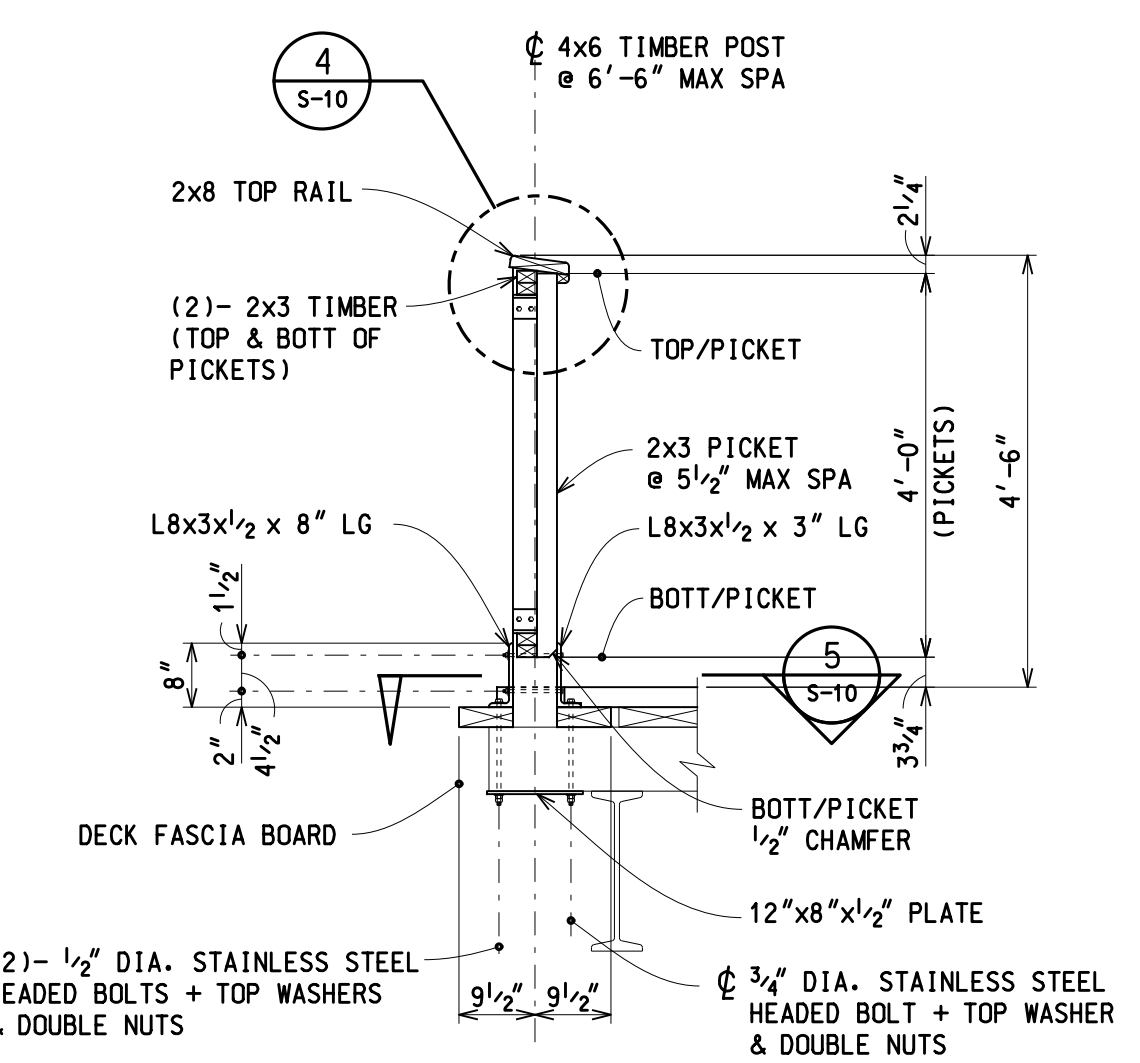
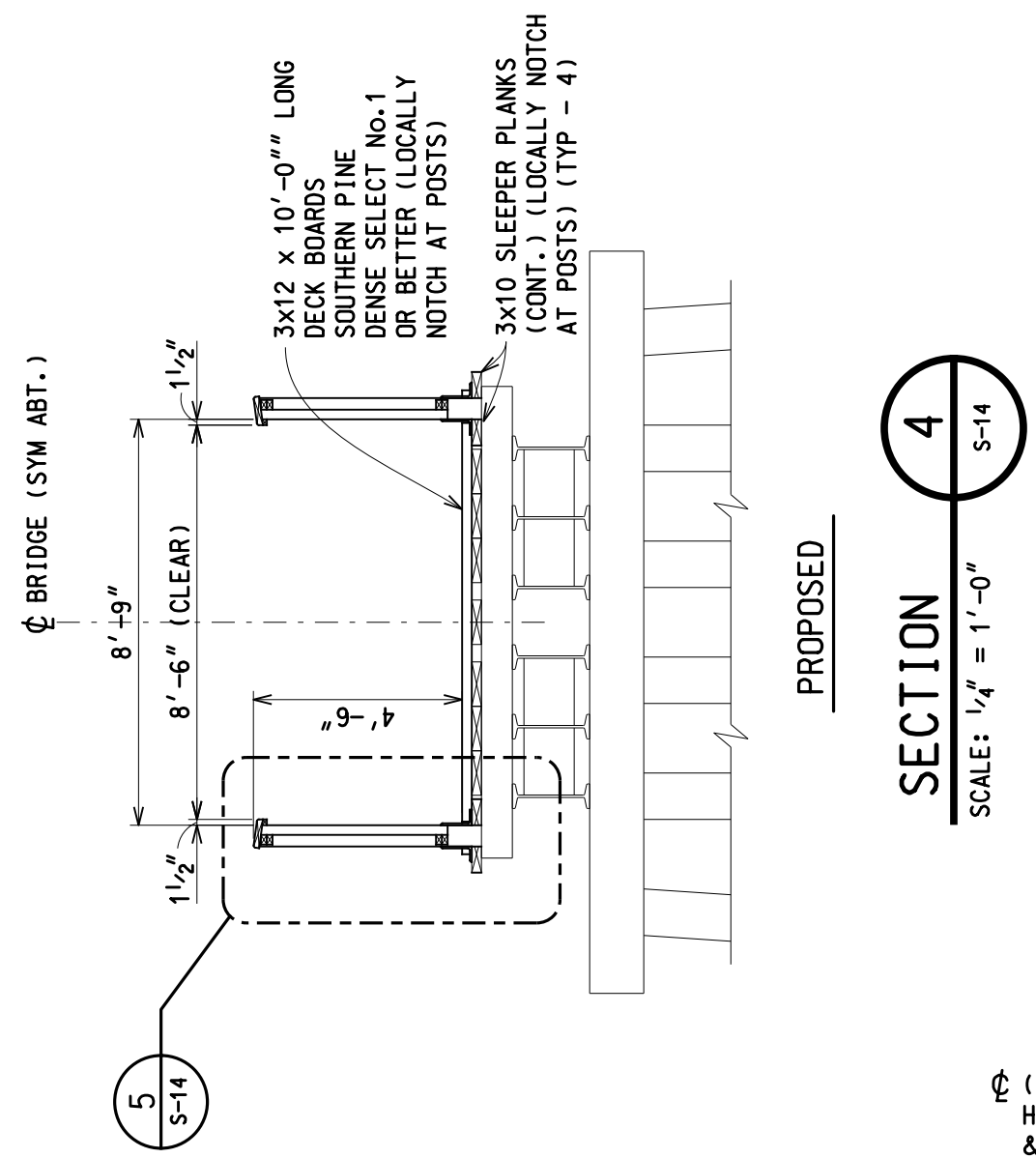
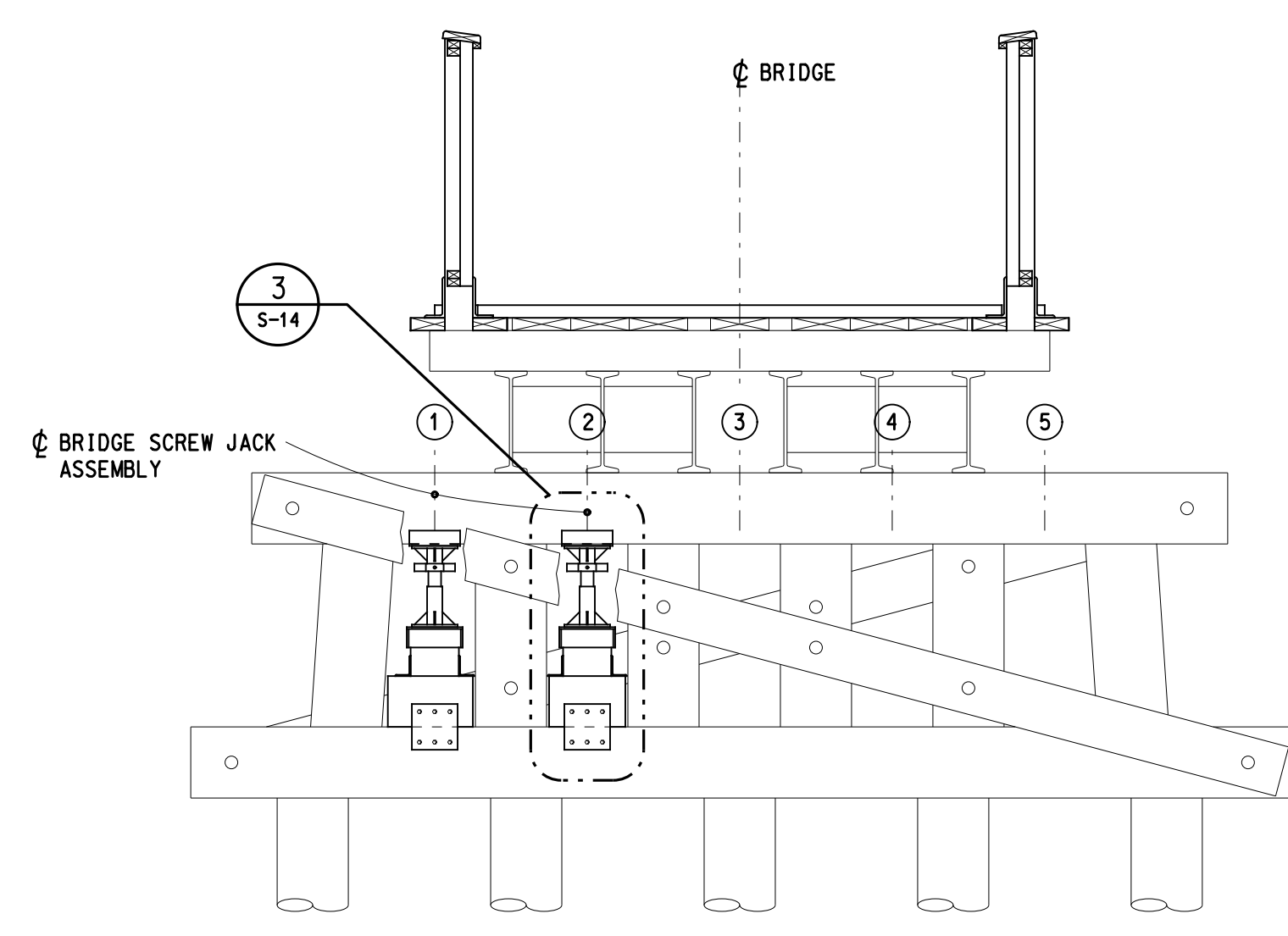
SECTION 1
 SCALE: 1/2" = 1'-0"



SECTION 2
 SCALE: 3/8" = 1'-0"



- BRIDGE SCREW JACK ASSEMBLY NOTES:
- AFTER COMPLETED JACK INSTALLATION APPLY TWO COATS OF COAL TAR EPOXY TO JACK "BITUMASTIC 300M" BY CARBOLINE OR APPROVED EQUAL.
 - EXISTING TIMBER DIAGONALS NOT SHOWN FOR CLARITY.
 - JACKING ASSEMBLY SHALL BE ENGAGED TO 3000 LBS AS DIRECTED BY THE ENGINEER. JACKING SHALL OCCUR AFTER ALL BRIDGE SCREW JACKS HAVE BEEN INSTALLED.
 - CONTRACTOR SHALL SUBMIT BRIDGE SCREW JACKING ITEMS AND PROCEDURES FOR ENGINEER'S APPROVAL PRIOR TO JACKING.
 - FIELD VERIFY ALL NECESSARY DIMENSIONS FOR BRIDGE SCREW JACK OPERATION PRIOR TO FABRICATION.
 - "TIMBER PILE REPAIR, P12" - FURNISHING OF ALL LABOR, MATERIAL AND EQUIPMENT NECESSARY TO COMPLETE THE WORK AS SHOWN IN SECTION 2, DETAILS 3 AND 6 ON THIS SHEET.



CITY OF ROCHESTER HILLS
2011 BRIDGE REHABILITATION PROJECT
 OAKLAND COUNTY MICHIGAN
 HRC JOB NO. 20110226 SCALE AS NOTED
 DATE AUGUST 2011 SHEET NO. S-14 OF 14
 P12: PAINT CREEK TRAIL BRIDGE OVER PAINT CREEK