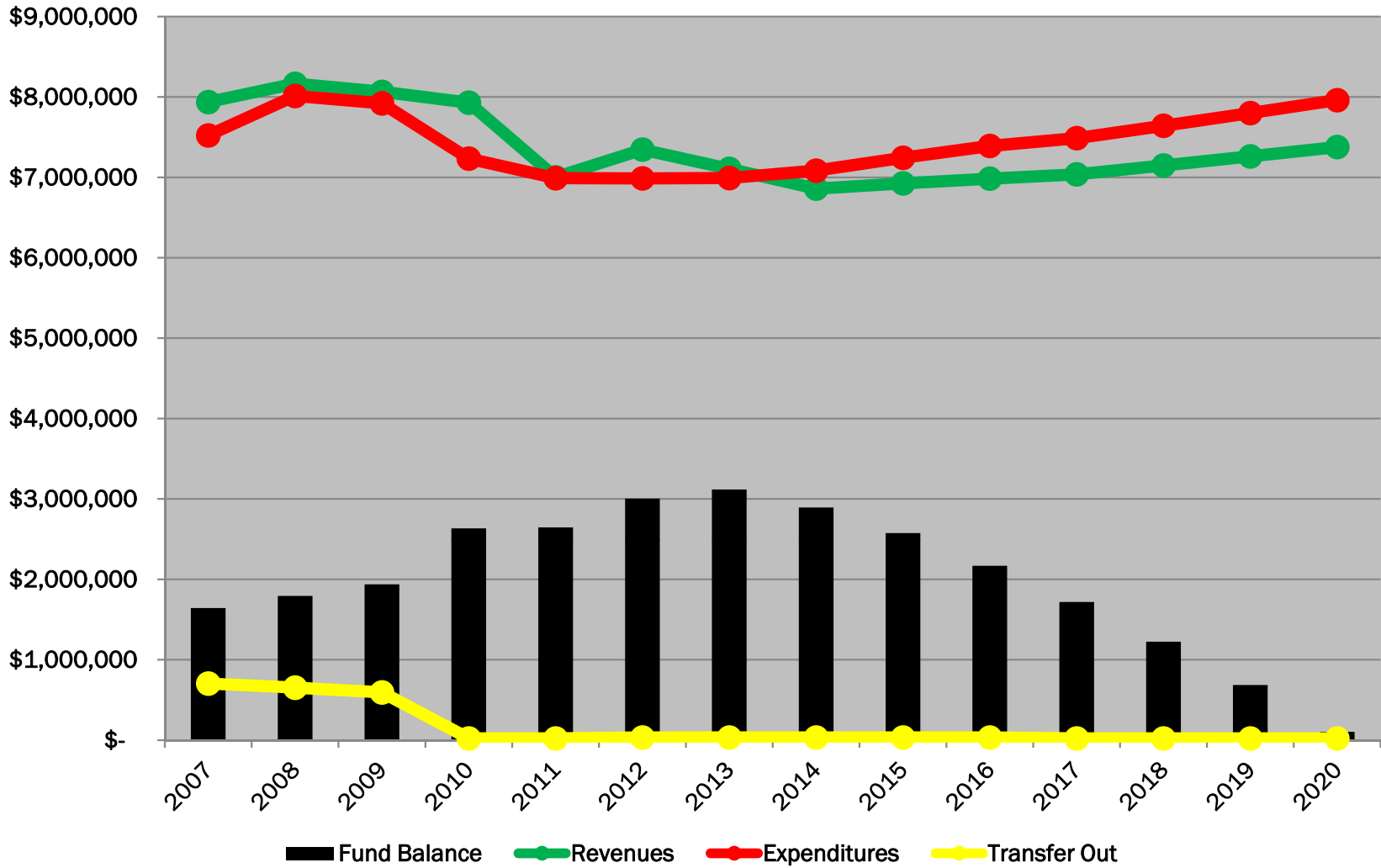




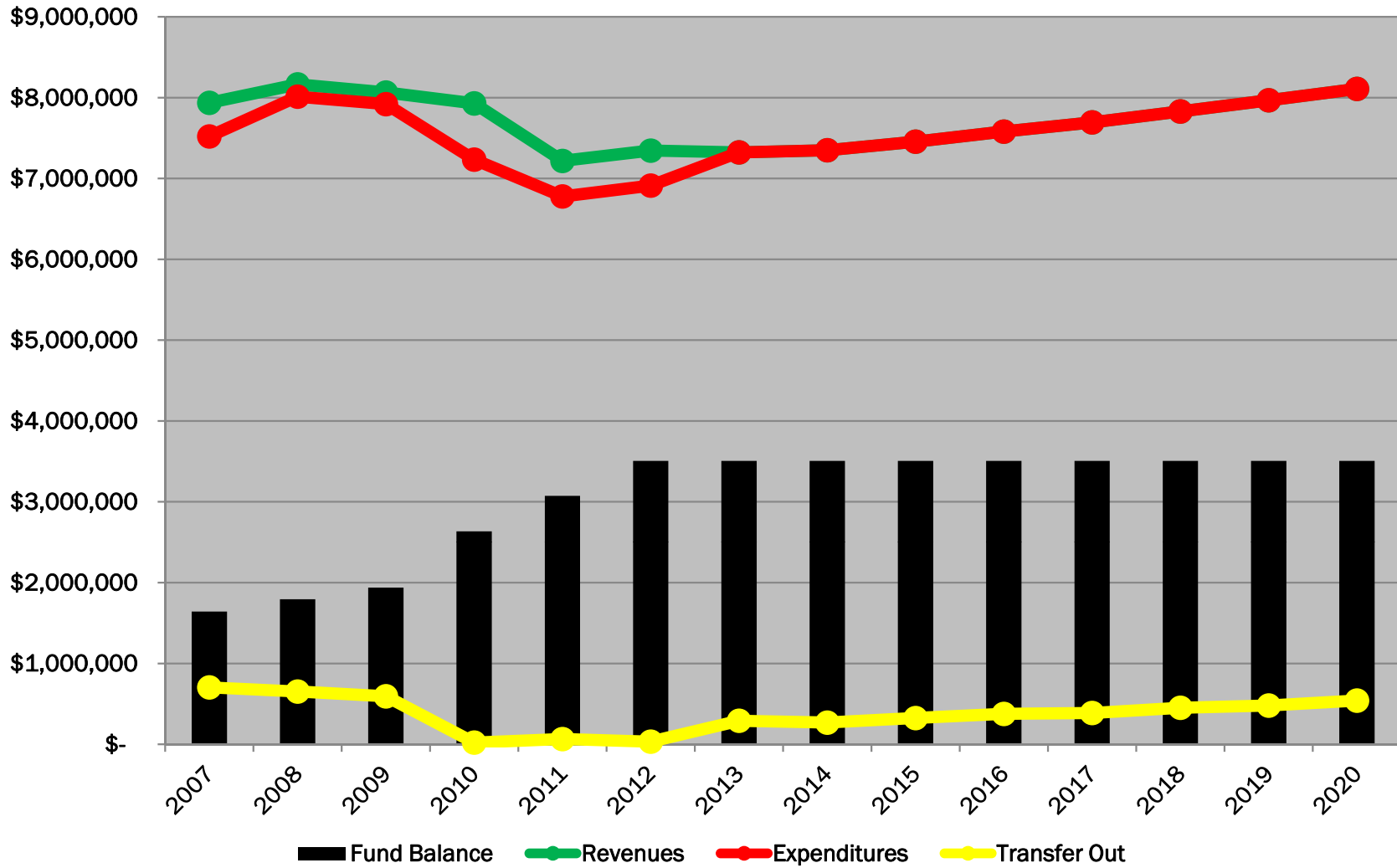
FIRE DEPARTMENT



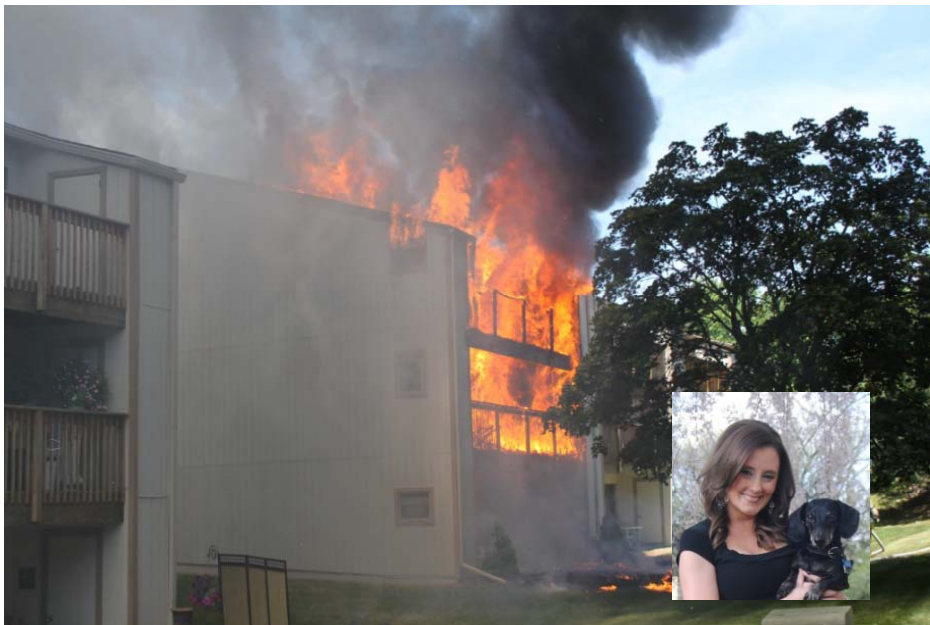
LAST YEAR'S FIRE DEPT FORECAST



CURRENT FIRE DEPT FORECAST

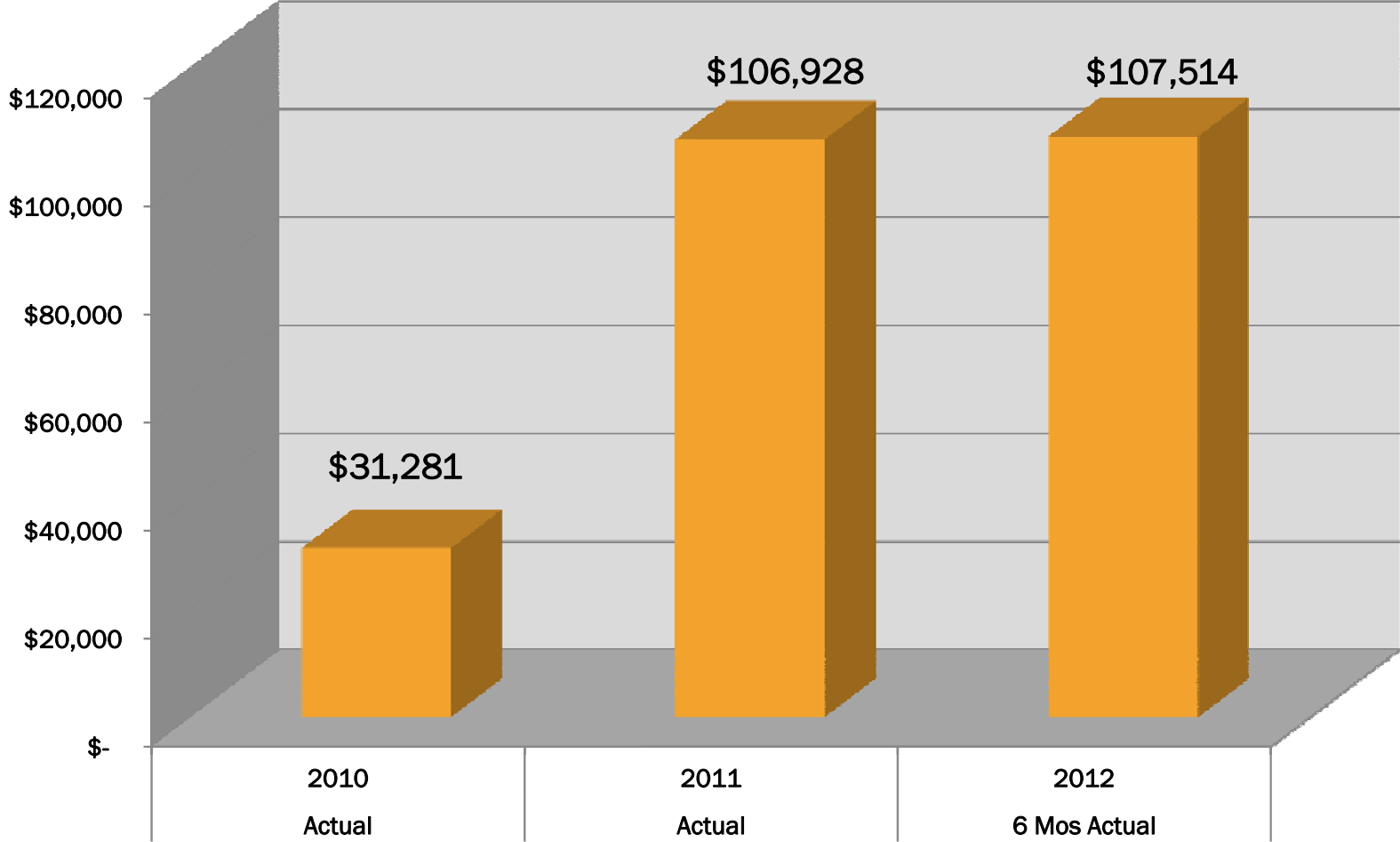


SUCCESS STORIES



EMS TRANSFERS

Medical Transport Revenue

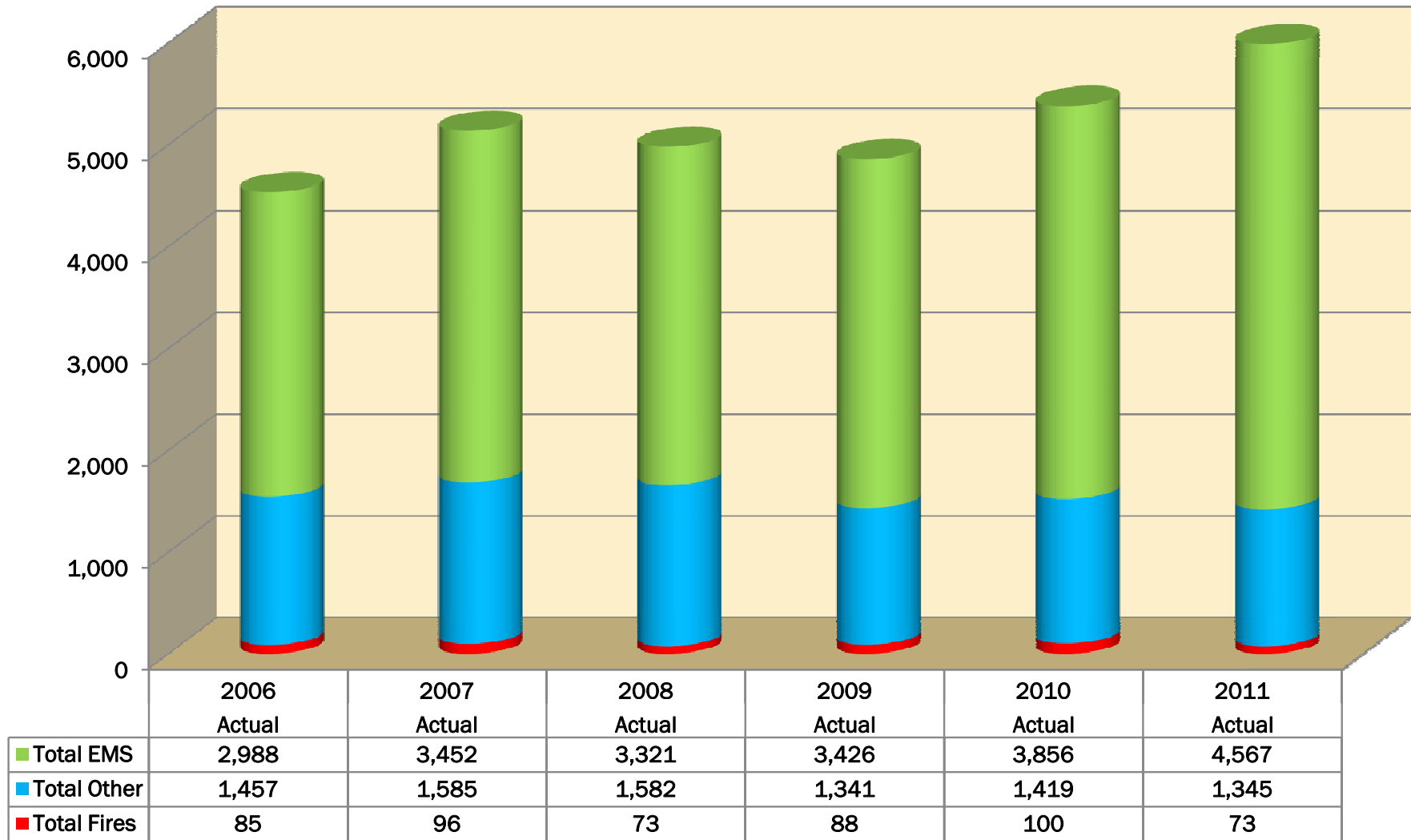


ACCOMPLISHMENTS FOR 2012

- Increased Non-Emergency Transfers
- Staffing of Fire Station #2 with Firefighter/Medics
 - Reduced Average Response Time Citywide by 20% or 1.1 minutes
- Settled Agreement with MAFF #50
- Continue to receive very positive feedback from Customer Service Survey



TOTAL CALLS FOR SERVICE

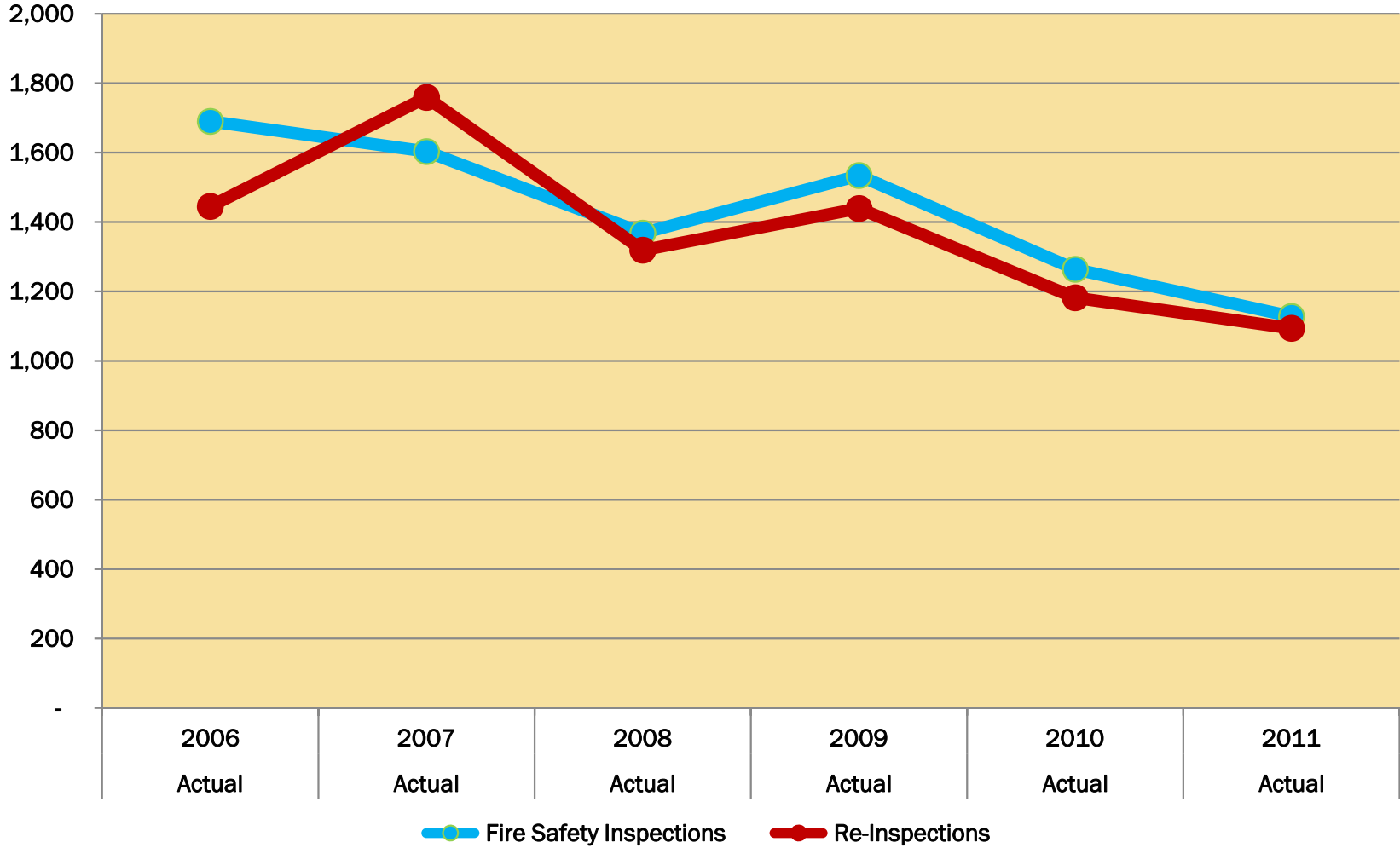


Other = False Alarms, Down Power Lines, Smoke/Odor Investigations, etc...

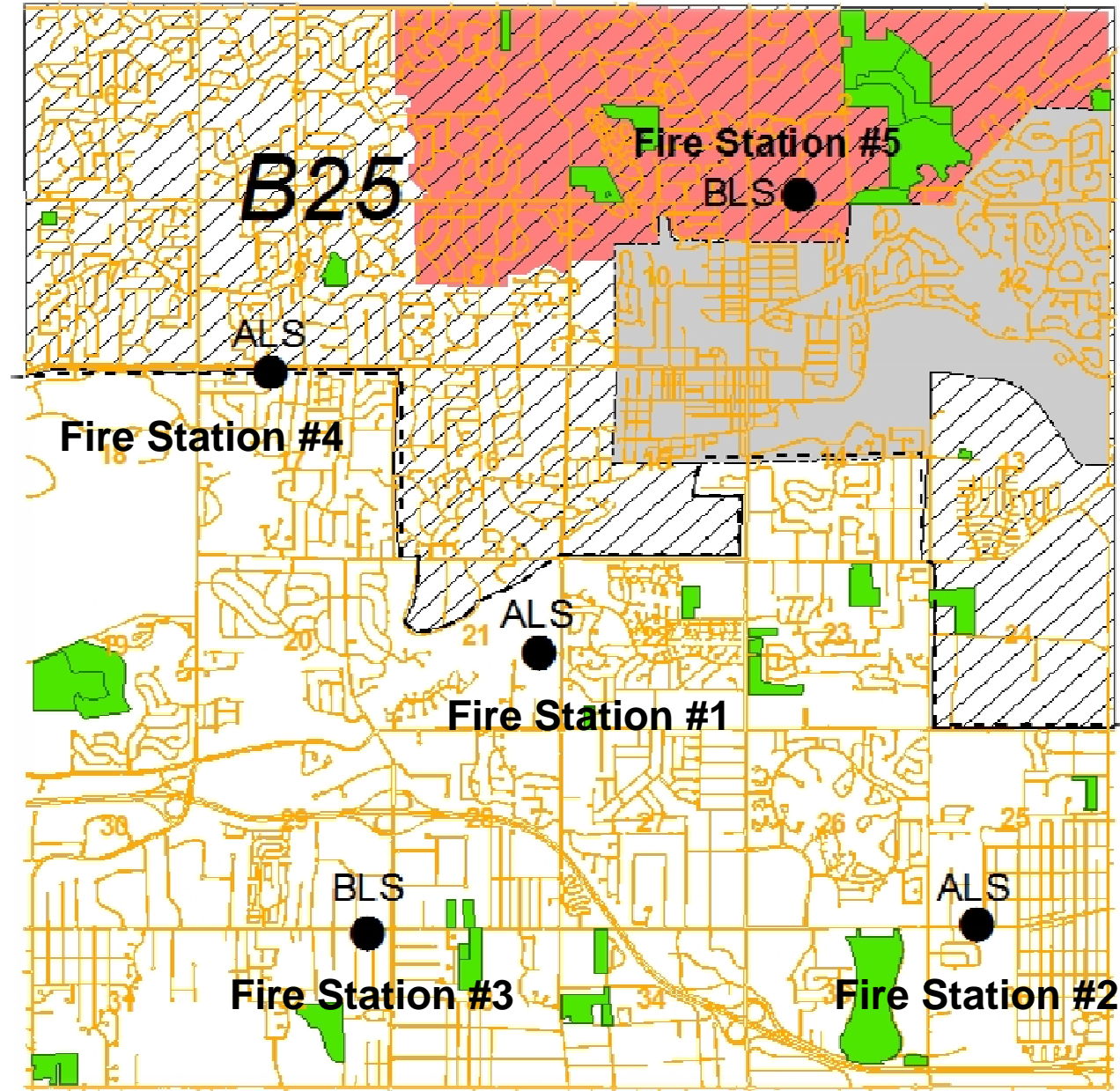


FIRE SAFETY & RE-INSPECTIONS

Fire Safety & Follow-up Inspections



FIRE STATION #5 COVERAGE



FIRE STATION #5 FACTS

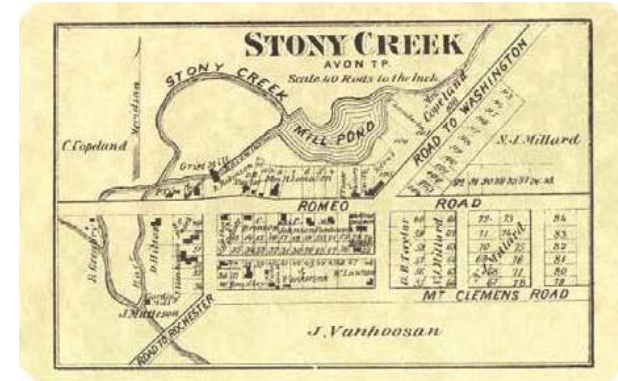
Demographics

- Condominium Units 771
- Residential Homes 2,331

- Apartment Complexes 2
 - Total Units 786
- Senior Living Complexes 1
 - Total Capacity 114
- City's Historic District

- 2000 Census Population 7,939
- 2010 Census Population 8,517

7.3% Increase in Station 5 Area

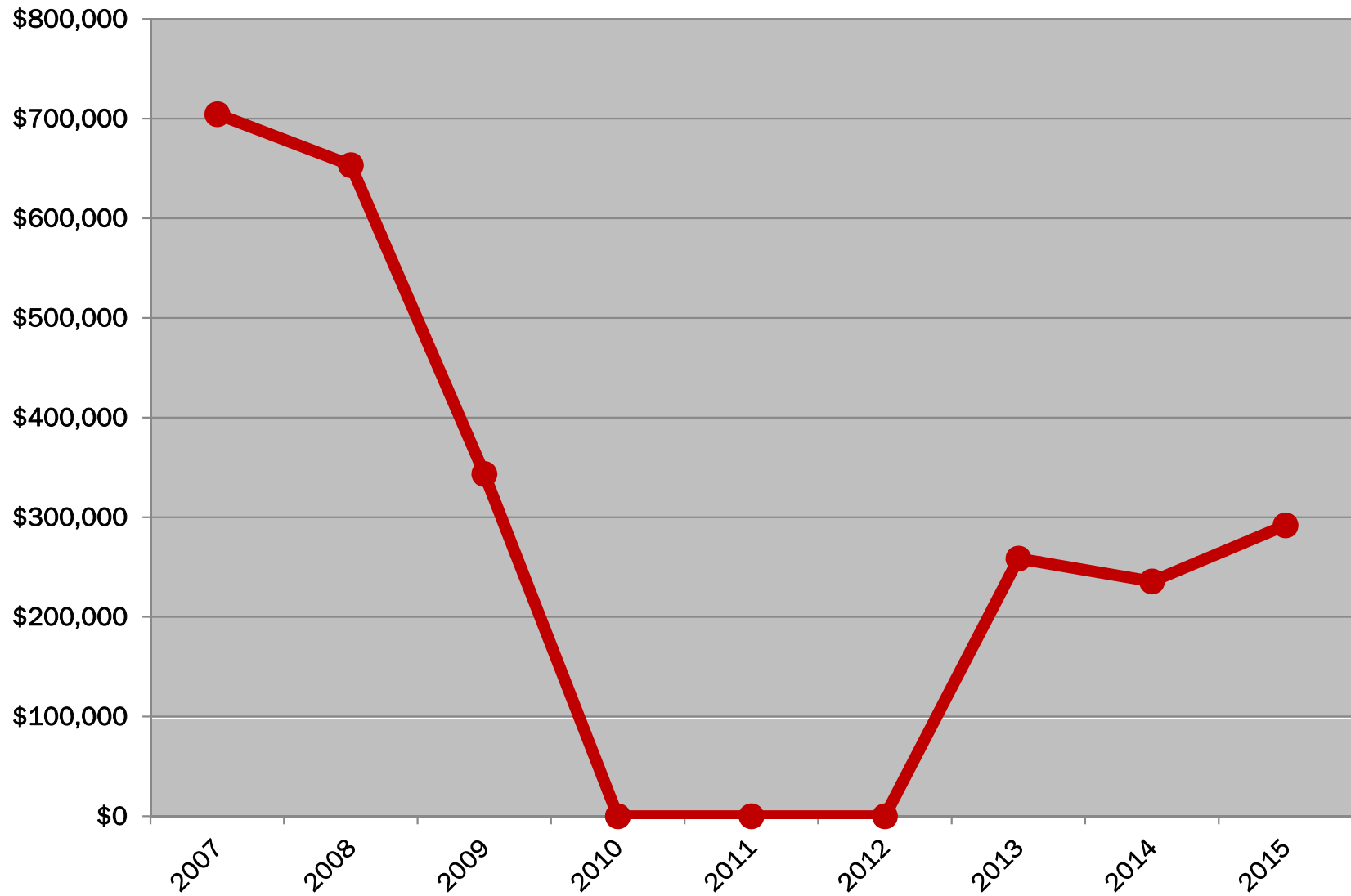


STAFFING FIRE STATION #5

- EMS call volume has increased 65% (2010 to 2011)
- Will reduce response times in this area
- Shorter response for other units
 - Saving on fuel and maintenance cost
 - Reduces the risk of crash = SAFETY



TRANSFER-OUT TO FIRE CAPITAL FUND



FIRE DEPARTMENT

Important Takeaway:

- **With the stabilization of Taxable Values, the Fire Department Fund will be able to:**
 - **Support current and proposed service delivery levels**
 - **Annually contribute funding to the Fire Capital Fund**
- **Full-time staffing of Fire Station 5 will equal:**
 - **Quicker response times**
 - **Safer service**
- **Better Education / Compliance with Fire Inspections**





Thank You





THANKS FROM ALL OF US FOR YOUR SUPPORT

