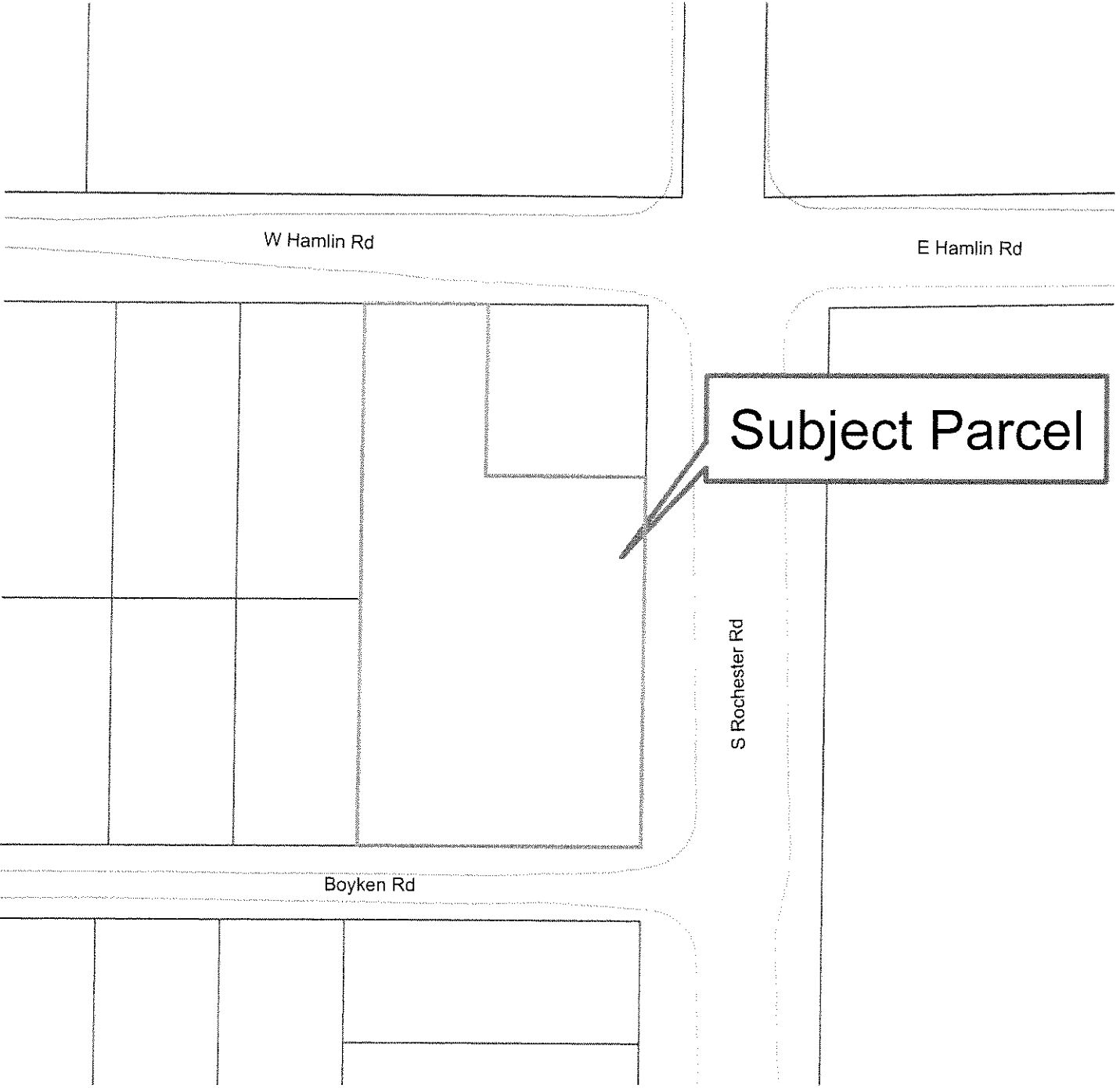


# 2050 S. Rochester Road

## PIN: 15-27-226-025



**Subject Parcel**



### Legend

-  TaxParcel
-  RoadEdge

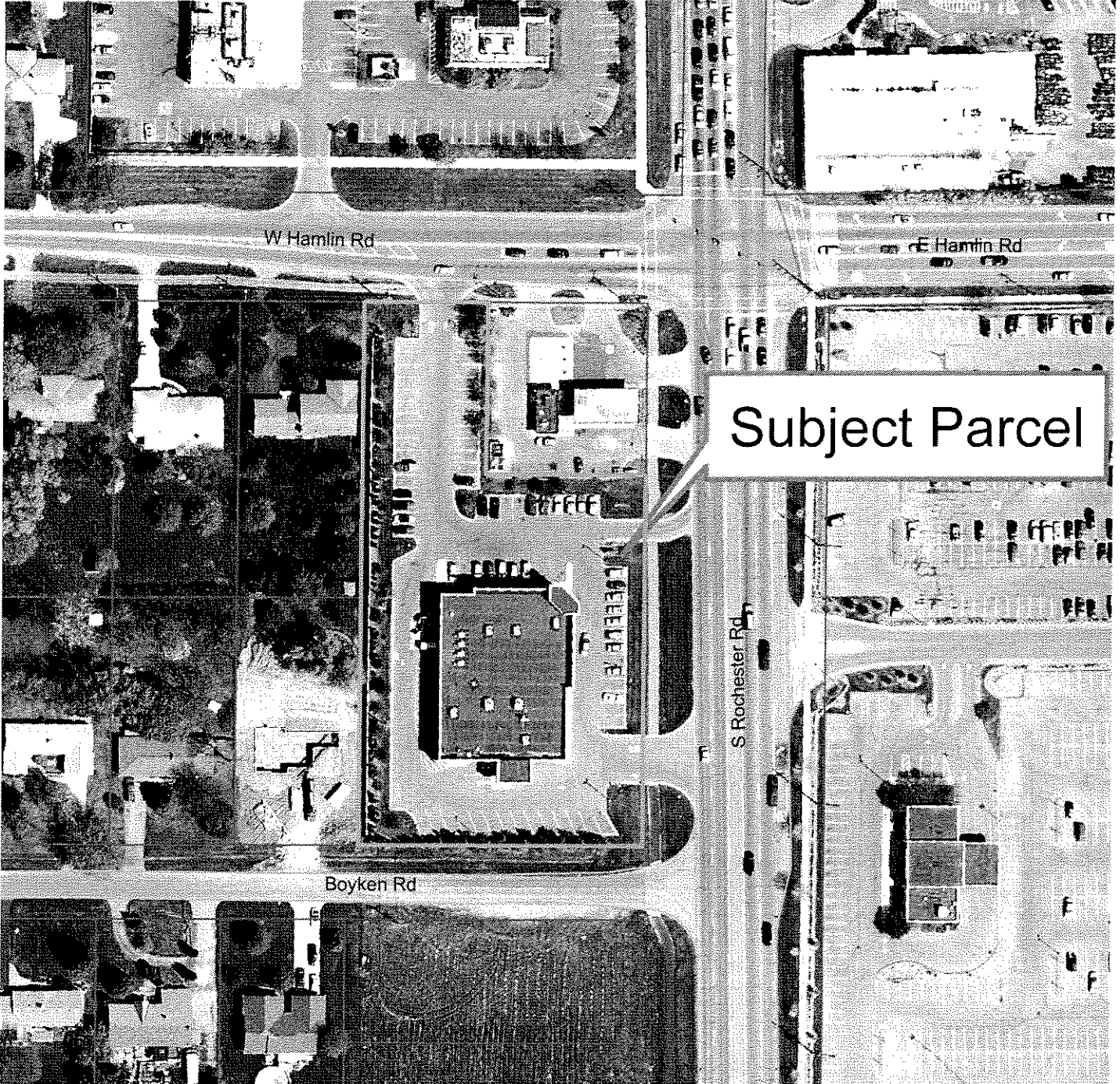
05-08-08

1 inch equals 122 feet

Aerial photographs as of April 2006  
Parcel lines were obtained on 04-01-08 from Oakland County  
Although the information provided by this map is believed to  
be reliable, its accuracy is not warranted in any way. The City  
of Rochester Hills assumes no liability for any claims arising  
from the use of this map.

# 2050 S. Rochester Road

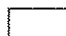
## PIN: 15-27-226-025




Subject Parcel



### Legend

 TaxParcel

 RoadEdge

05-08-08

1 inch equals 122 feet

Aerial photographs as of April 2005.  
Parcel lines were obtained on 04-01-08 from Oakland County.  
Although the information provided by this map is believed to be reliable, its accuracy is not warranted in any way. The City of Rochester, MI, assumes no liability for any claims arising from the use of this map.