

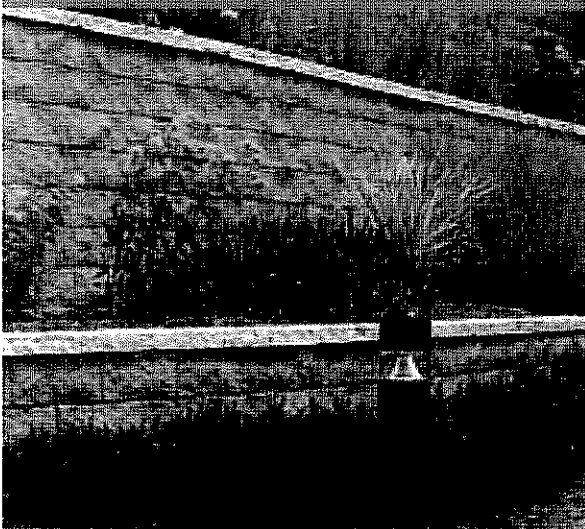
# FENDT WALL STONES



8" KEYSTONE SCULPTURED SPLIT

# KEYSTONE STRAIGHT SPLIT

Keystone Straight Split wall stones are clean-cut and classic for those seeking a more traditional wall presentation. Keystone Straight Split wall stones are available in a wide variety of sizes and colors. Imagine the creative possibilities! Perfect for border walls, tree rings, terraces, corners, curves, steps and stairs.



4" MINI KEYSTONE STRAIGHT SPLIT ▲

*Fendt wall stones are tightly compacted during manufacturing, so the material absorbs very little moisture. This process minimizes the effects of freeze/thaw cycles.*

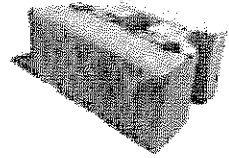
## ▲ 4" MINI KEYSTONE STRAIGHT SPLIT

### 4" MINI STRAIGHT SPLIT



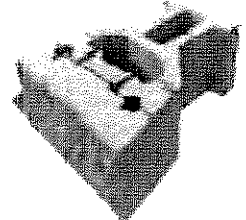
Size .....	4"H x 18"W x 11"D
Exposed face area.....	1/2 Sq. Ft. (4" x 18")
Weight.....	43 lbs.
Units per pallet.....	63 units
Weight per pallet .....	2709 lbs.

### 8" COMPAC STRAIGHT SPLIT



Size .....	8"H x 18"W x 11"D
Exposed face area.....	1 Sq. Ft. (8" x 18")
Weight.....	86 lbs.
Units per pallet.....	36 units
Weight per pallet .....	3096 lbs.

### 8" STANDARD STRAIGHT SPLIT

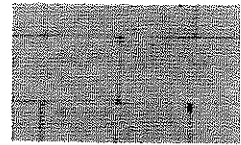


Size .....	8"H x 18"W x 22"D
Exposed face area.....	1 Sq. Ft. (8" x 18")
Weight.....	128 lbs.
Units per pallet.....	20 units
Weight per pallet .....	2560 lbs.

#### FIBERGLASS PIN



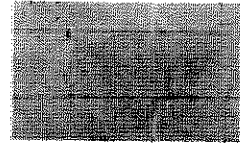
5 1/4" long  
1/2" diameter  
500 pins/box  
Two pins needed for each  
Mini, Compac and Standard.



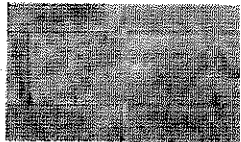
GRAY



RUSTIC BLEND



DESERT BROWN



WALNUT BLEND

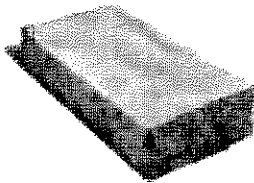


LIMESTONE BLEND

8" KEYSTONE STRAIGHT SPLIT ▲

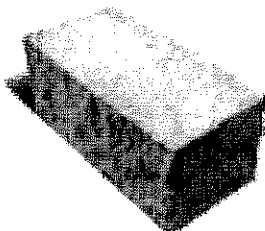
## 90 DEGREE RETURN CORNER UNITS

### 4" 90° CORNER



Size ..... 4"H x 18"W x 9"D  
 Exposed face area ..... 1/2 Sq. Ft. (4" x 18")  
 Weight ..... 43 lbs.  
 Units per pallet ..... 60 units  
 Weight per pallet ..... 2580 lbs.

### 8" 90° CORNER



Size ..... 8"H x 18"W x 9"D  
 Exposed face area ..... 1 Sq. Ft. (8" x 18")  
 Weight ..... 86 lbs.  
 Units per pallet ..... 30 units  
 Weight per pallet ..... 2580 lbs.

# KEYSTONE SCULPTURED SPLIT

8" KEYSTONE SCULPTURED SPLIT ▶

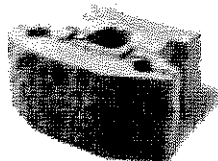
Like Keystone Straight Split, Keystone Sculptured Split wall stones offer a traditional and classic presentation. But you can add a creative flair with Keystone Sculptured Split wall stones. Available in a variety of colors and sculpted faces, these wall stones offer unlimited design possibilities. Turn any landscaping project—large or small—into a work of art!



▲ 8" KEYSTONE SCULPTURED SPLIT

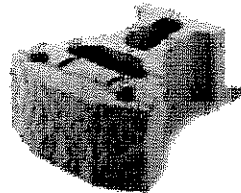
▶ 8" KEYSTONE SCULPTURED SPLIT

## 8" COMPAC SCULPTURED SPLIT



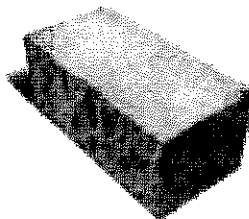
Size ..... 8"H x 18"W x 11"D  
 Exposed face area ..... 1 Sq. Ft. (8" x 18")  
 Weight ..... 86 lbs.  
 Units per pallet ..... 36 units  
 Weight per pallet ..... 3096 lbs.

## 8" STANDARD SCULPTURED SPLIT



Size ..... 8"H x 18"W x 22"D  
 Exposed face area ..... 1 Sq. Ft. (8" x 18")  
 Weight ..... 128 lbs.  
 Units per pallet ..... 20 units  
 Weight per pallet ..... 2560 lbs.

## 8" 90° CORNER



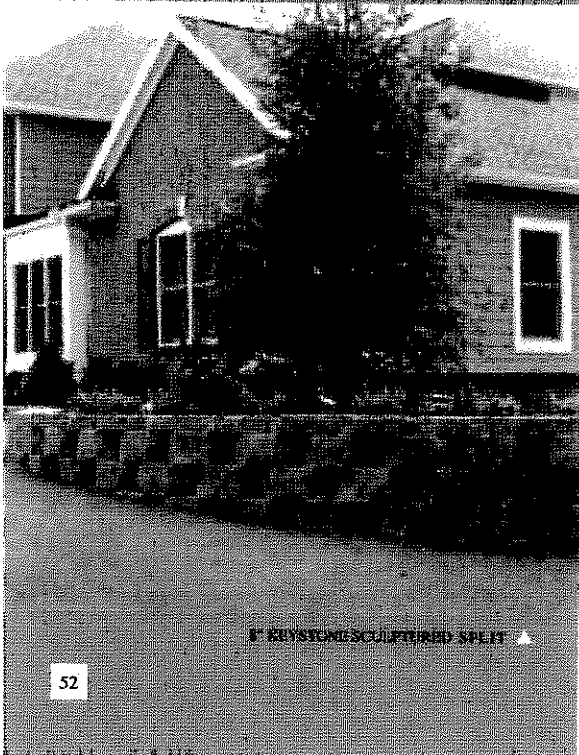
Size ..... 8"H x 18"W x 9"D  
 Exposed face area ..... 1 Sq. Ft. (8" x 18")  
 Weight ..... 86 lbs.  
 Units per pallet ..... 30 units  
 Weight per pallet ..... 2580 lbs.

## FIBERGLASS PIN

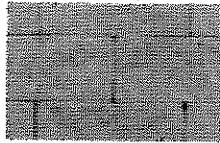


5 1/4" long  
 1/2" diameter  
 500 pins/box  
 Two pins needed for each  
 Mini, Compac and Standard.

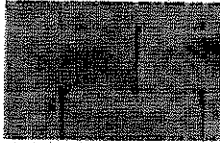
(See splitting detail on page 60.)



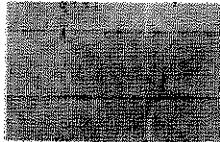
▶ 8" KEYSTONE SCULPTURED SPLIT ▲



GRAY



RUSTIC BLEND



DESERT BROWN



**KEYSTONE**<sup>®</sup>  
RETAINING WALL SYSTEMS  
A CORTECH COMPANY

*Retaining Excellence*



KEYSTONE

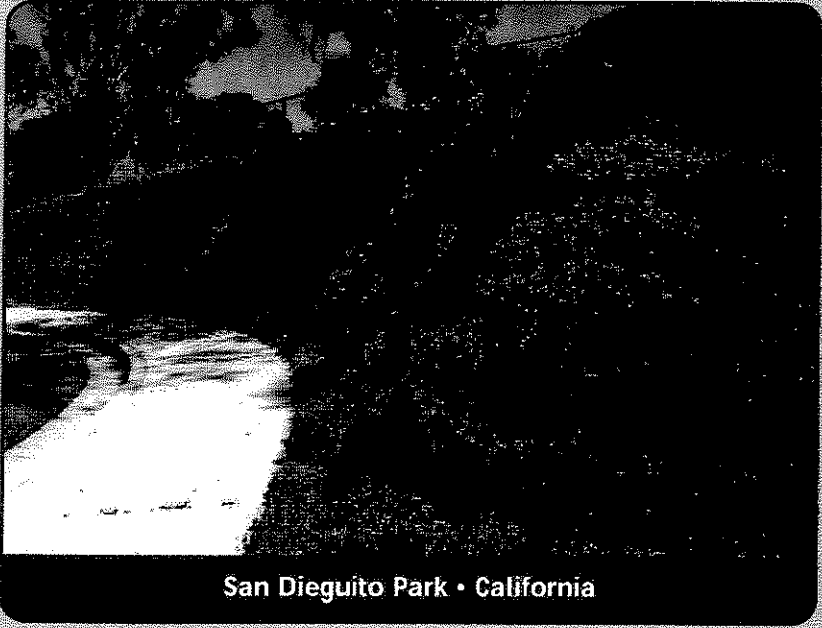
# PLANTER UNIT



# MAKE IT GREEN WITH THE KEYSTONE® PLANTER UNIT

The Keystone Planter Unit combines the industry-leading Keystone Standard Unit with an innovative planting system that can produce a lush blanket of irrigated vegetation.

Featuring a unique planting cavity, the Keystone Planter Unit is perfect for plants up to one gallon in size. The Planter Unit is the exact size of the Standard Unit, naturally integrating into Keystone Standard Unit walls. This unique product also allows for placement of irrigation systems and provides the natural drainage that encourages plant root growth and allows the wall structure to spring to life.

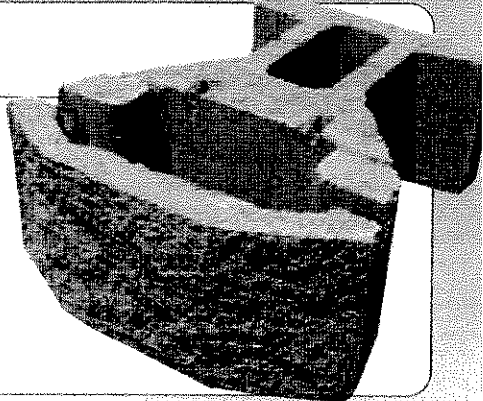


San Dieguito Park • California

## KEYSTONE STANDARD PLANTABLE UNIT

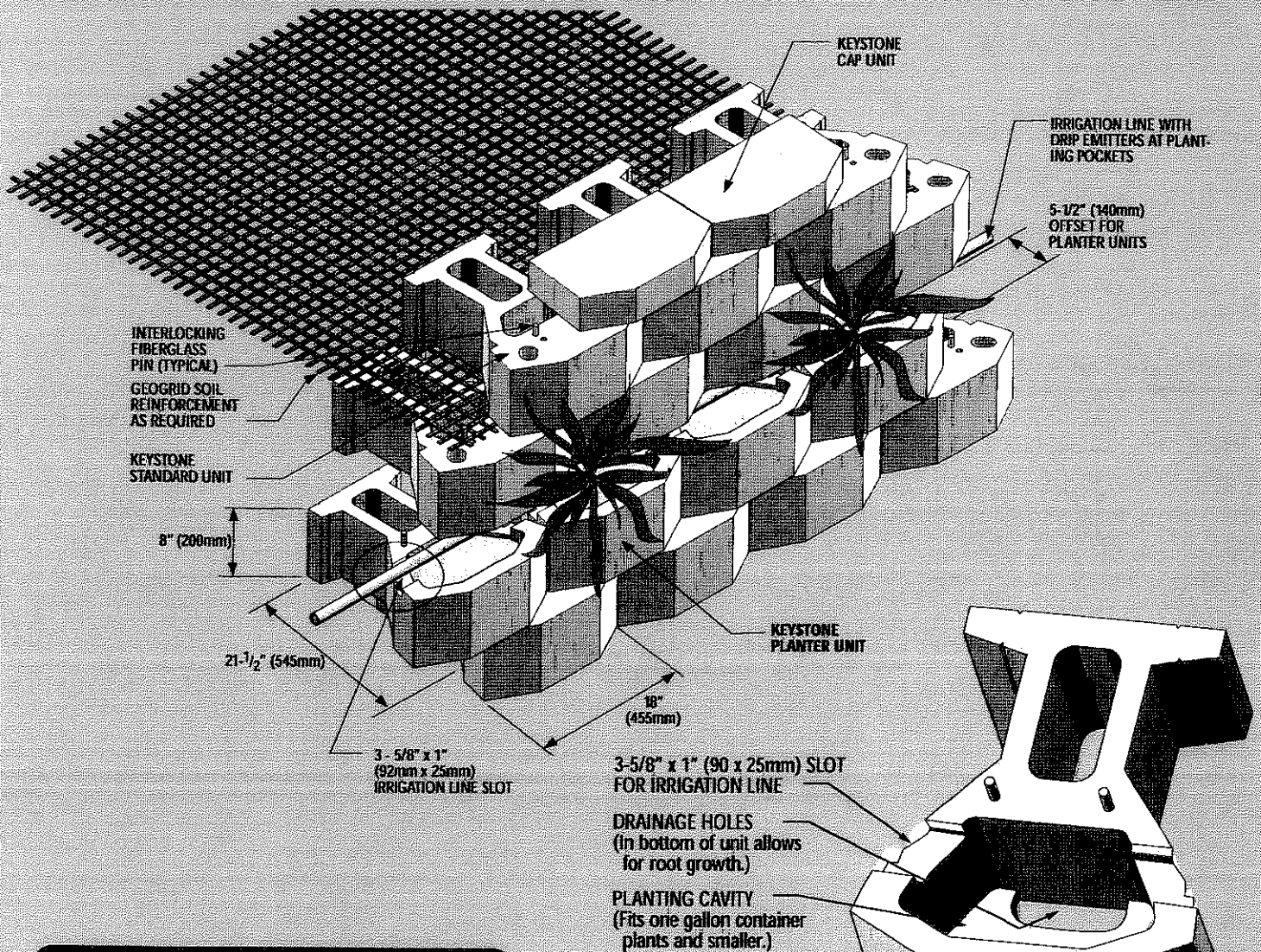
- Unit Dimensions\* .....8" h x 18" w x 21-1/2" d • (200mm x 457mm x 545mm)
- Face Area .....1 square foot
- Unit Weight\* .....95 lbs (43kg)
- Plantable Volume/Unit .....0.25 Cubic Feet (nominal) metric equivalent

\* Unit size, weight, color, texture and availability may vary by region. Consult your local Keystone Representative.  
Note: Setback varies based on unit dimensions.

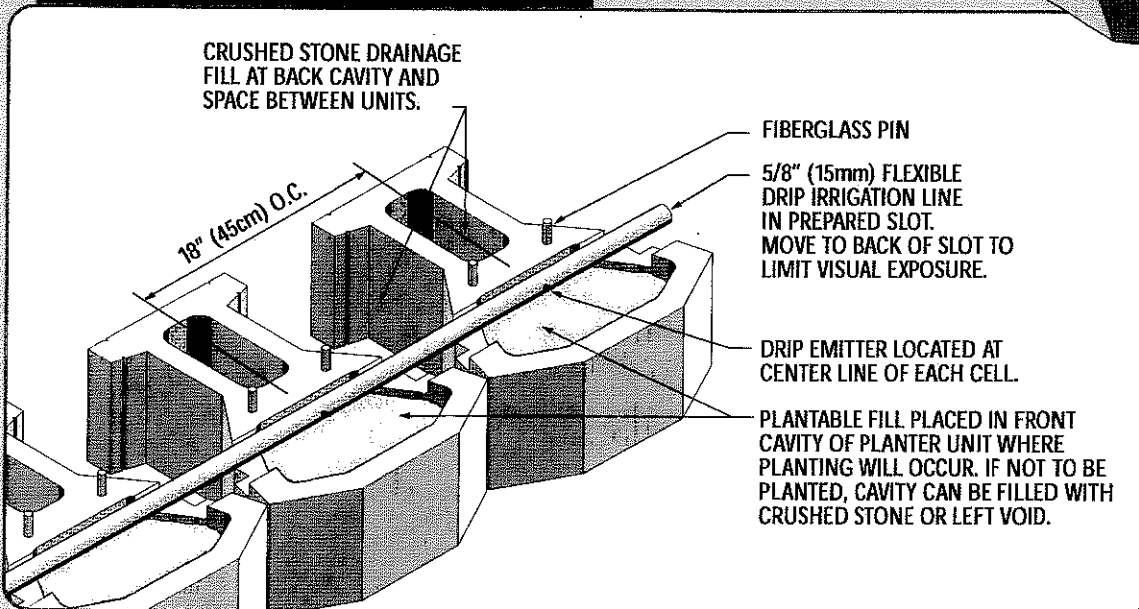


The Home Depot • Escondido, CA

# ASSEMBLY OF SYSTEM COMPONENTS

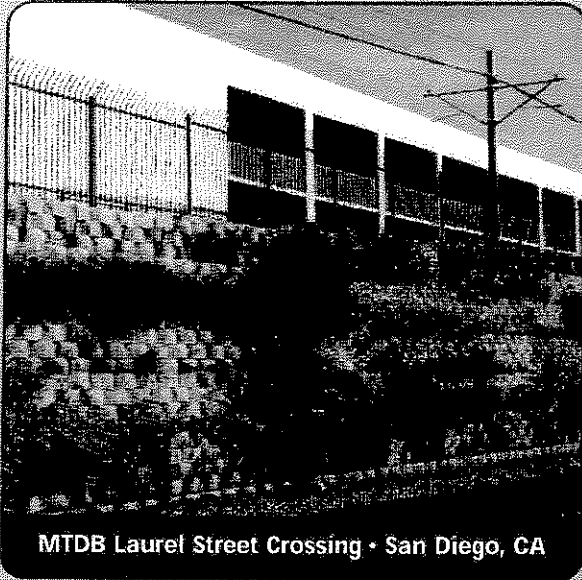


## Irrigation System Detail



**CONSULT YOUR LOCAL KEYSTONE REPRESENTATIVE FOR OPTIONS OF FACE TEXTURE AND COLOR.**

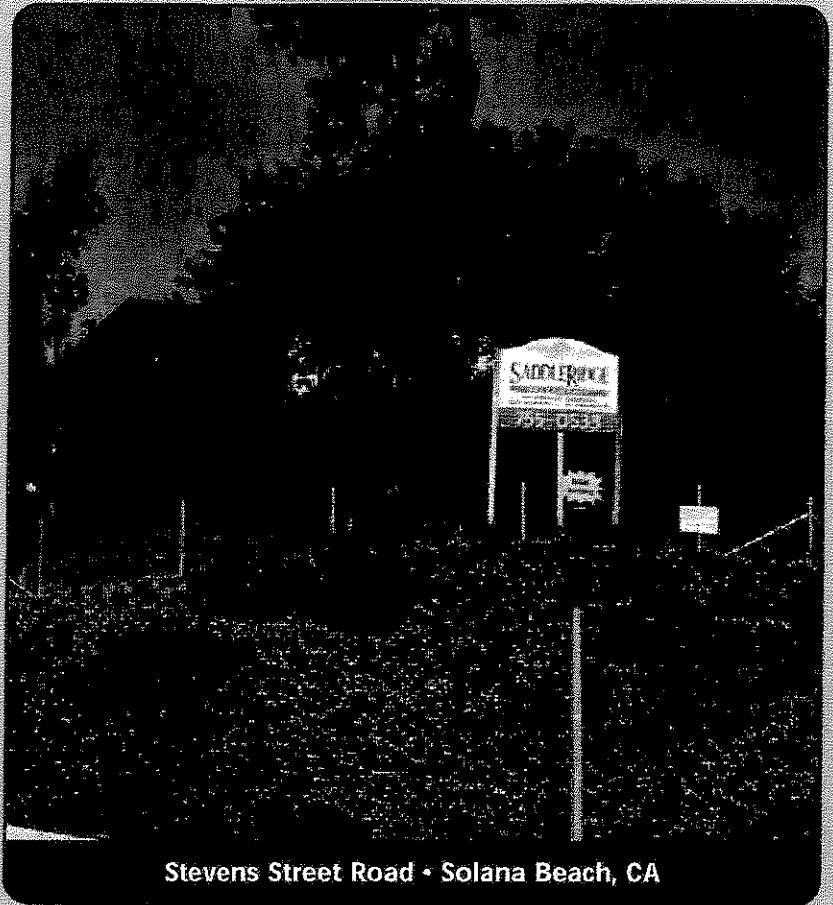




MTDB Laurel Street Crossing • San Diego, CA

### MUNICIPAL PROJECTS

The Keystone Planter Unit creates healthy, beautiful, and code-compliant structures with a time-tested product.



Stevens Street Road • Solana Beach, CA

## LET YOUR CREATIVITY GROW!

Keystone Planter Units provide a whole new set of options for wall designers. No longer are decisions limited to just color and unit texture. With the ability to support rich plant life, Keystone Planter Units make possible degrees of depth and color never before available in a structural wall product.

Planter Units provide pockets to hold planting soil and create a healthy growth environment for plant roots. Natural drainage is also achieved by this Keystone mortarless, interconnected system.

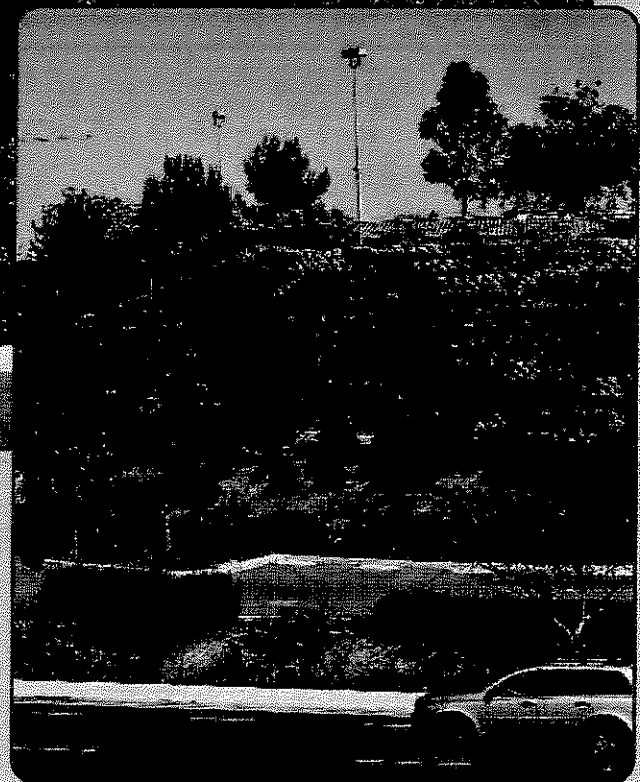
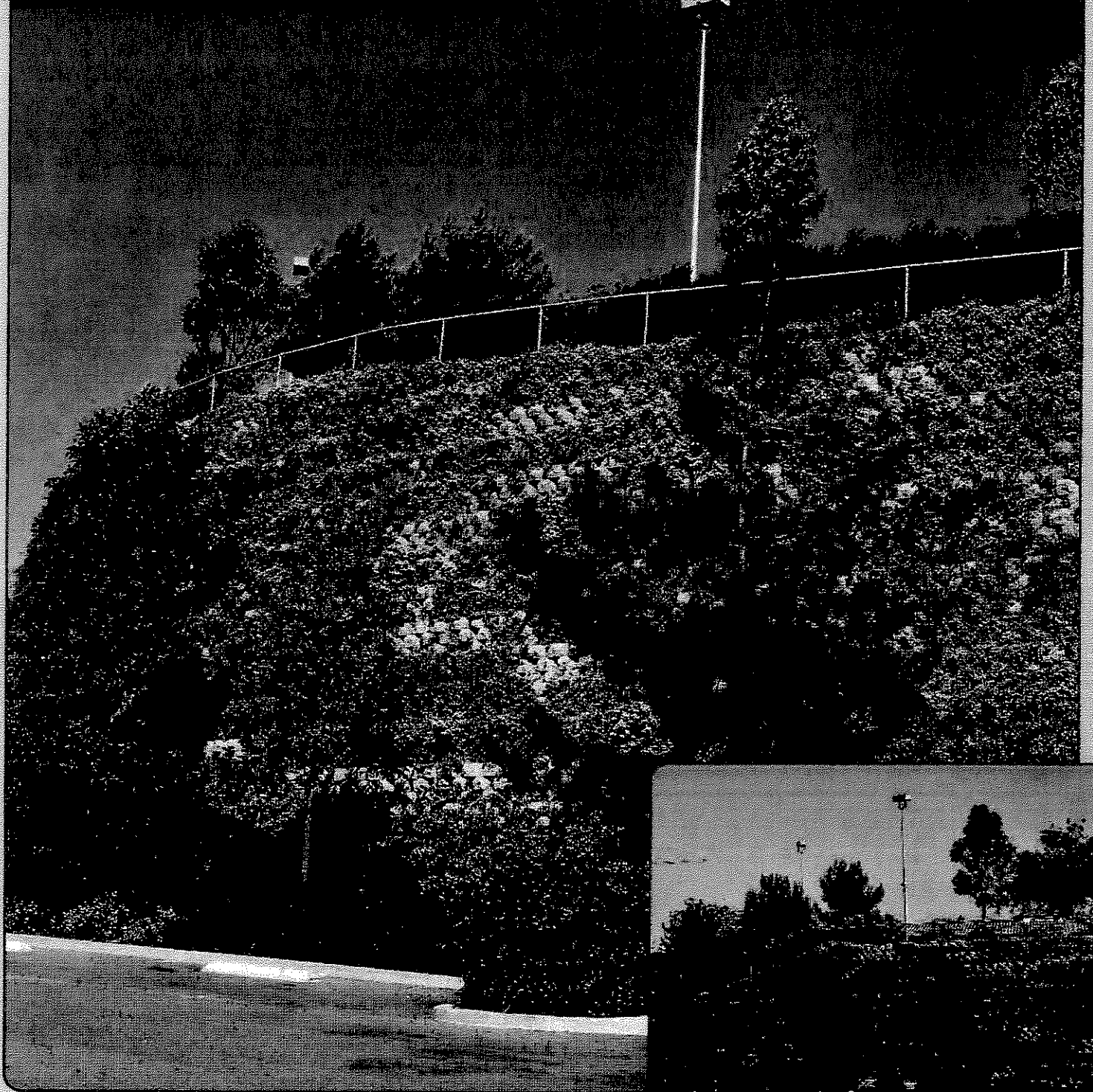
The amount of planting in the wall is completely up to the wall designer. Plant use is controlled by how many rows of Planter Units are incorporated into the wall structure. Discuss recommended plants with your local Keystone representative.

Irrigation lines fit naturally into pre-formed slots, holding them in place while hiding them from view. Keystone Planter Units have minimal setback requirements that allow for near vertical walls to be landscaped.

Due to the internal connection method of high strength fiberglass pins and durable geogrid soil reinforcement, Keystone walls built with Standard Units and Planter Units can solve the most challenging structural problems while providing the added benefits of a naturally beautiful landscape. The Keystone Standard Unit is an industry-leading segmental retaining wall product. Its height to depth ratio delivers a structurally sound wall system with superior stability, durability and strength.

Call your Keystone representative today to discuss using the Planter Unit on your next project! For more information on this, or any other innovative Keystone product, visit [www.keystonewalls.com](http://www.keystonewalls.com) or call (800) 747-8971.

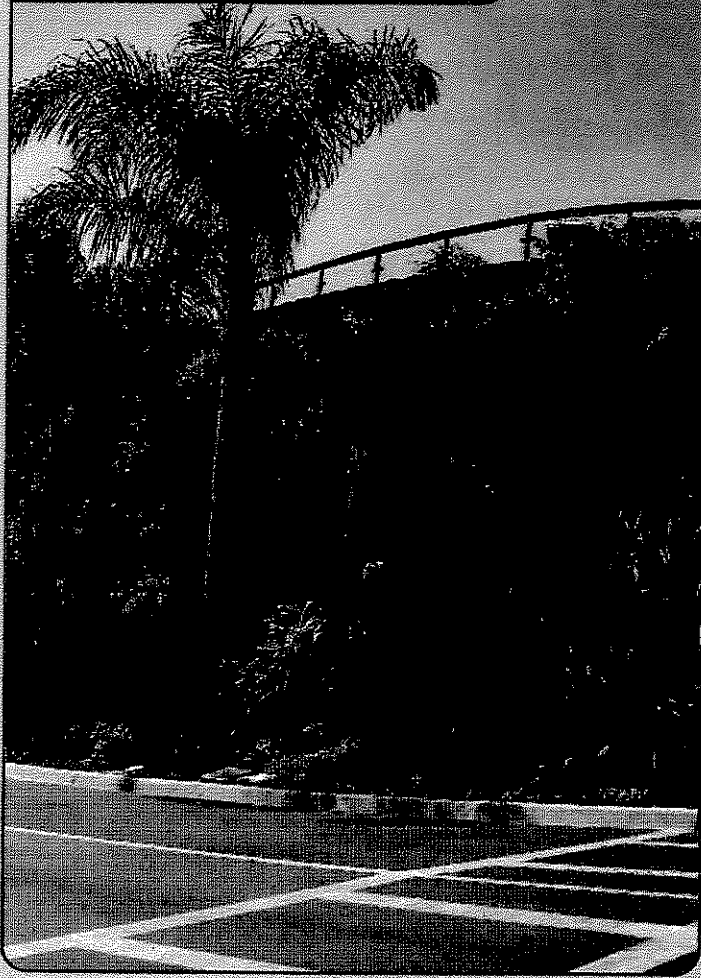
Carmel Creek Community Center • San Diego, CA



The Keystone Planter Unit allows the distinctive beauty of a Keystone wall to blossom with plant life! Planter Units are designed as accent features in the Keystone Retaining Wall System. Working together with Keystone Standard Units, Keystone Planter Units create beautiful walls with superior structural performance.

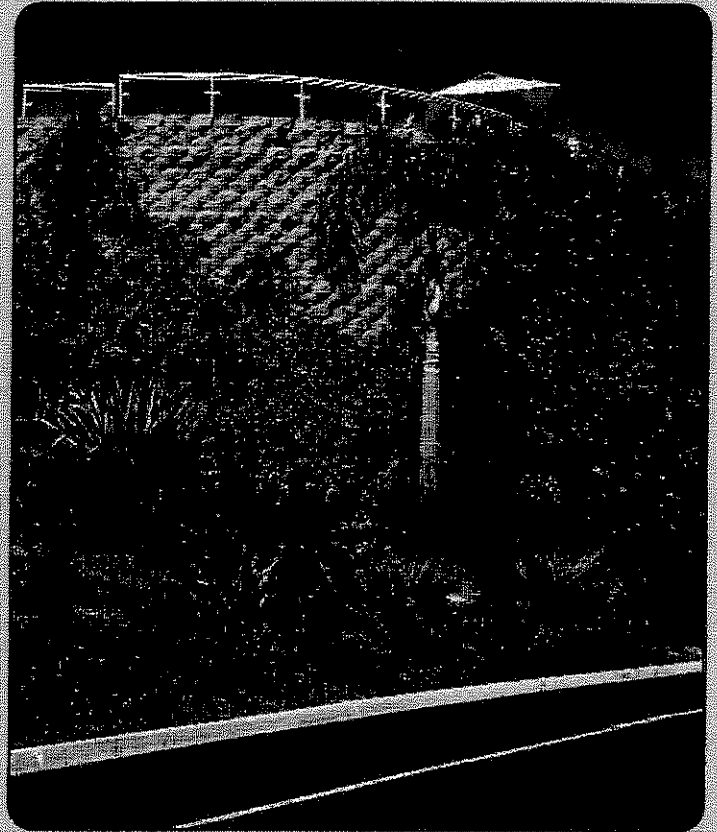
# BRING WALLS TO LIFE WITH KEYSTONE®!

Four Seasons Aviara • Carlsbad, CA



## RECREATIONAL PROPERTIES

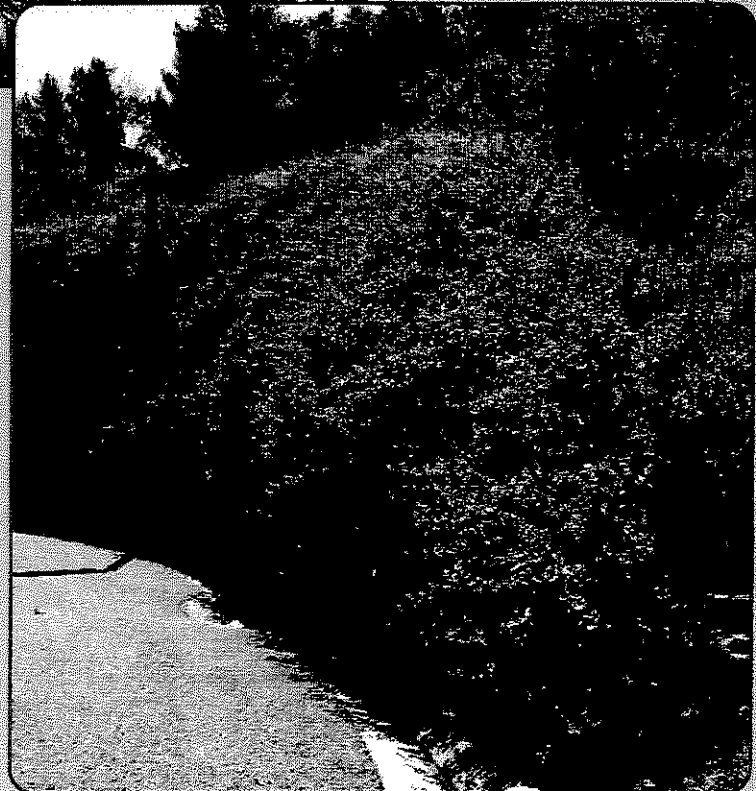
The Keystone Planter Unit offers the look of blooming elegance to high-value outdoor settings— with an economical price-tag!



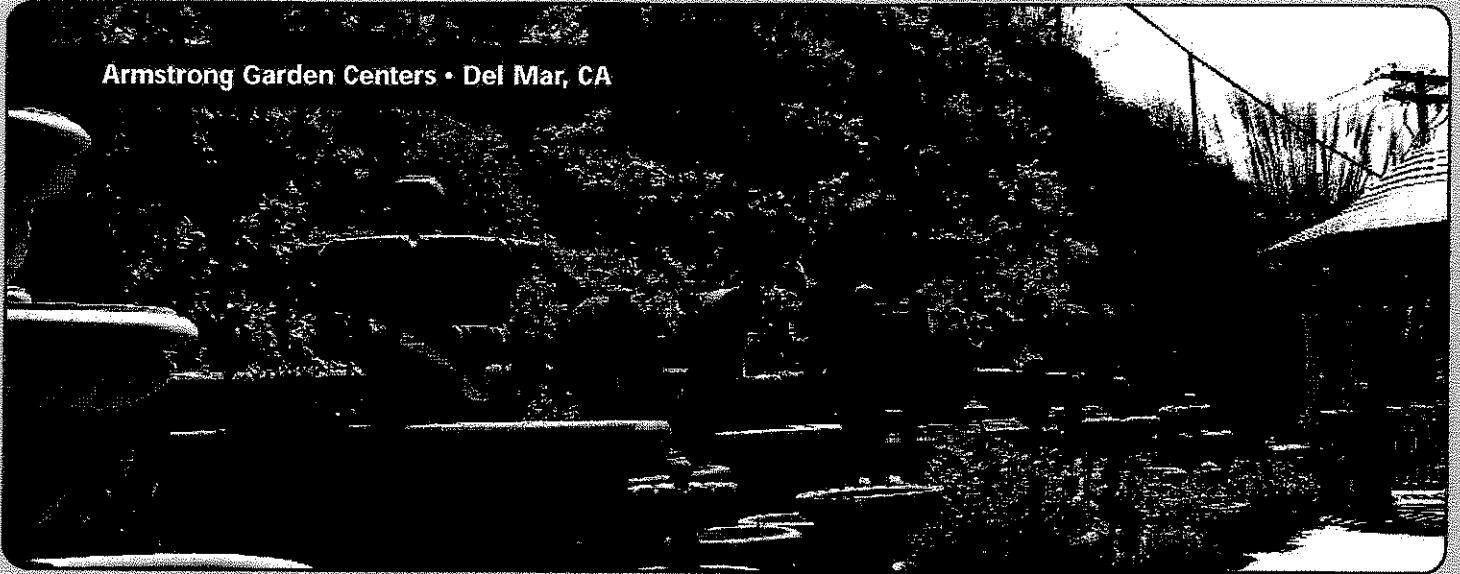


**PARKING LOTS & COMMERCIAL CENTERS**

Soften the impact of your wall while employing the best in retention solutions with the Keystone Planter Unit.

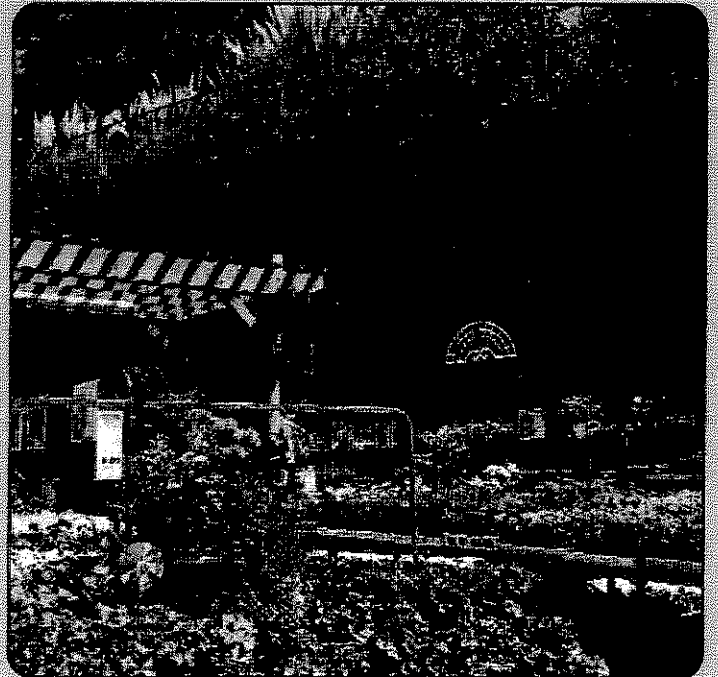


Armstrong Garden Centers • Del Mar, CA



### OUTDOOR BUSINESSES & MORE

The lush green carpet created by the Keystone Planter Unit allows the natural atmosphere to extend beyond the display yard.



*Retaining Excellence™*

Keystone Retaining Wall Systems, Inc. • A CONTECH Company

4444 West 78th Street, Minneapolis, MN 55435

(952) 897-1040 • [www.keystonewalls.com](http://www.keystonewalls.com) • M9805

Keystone is a subsidiary of



DISTRIBUTED BY: