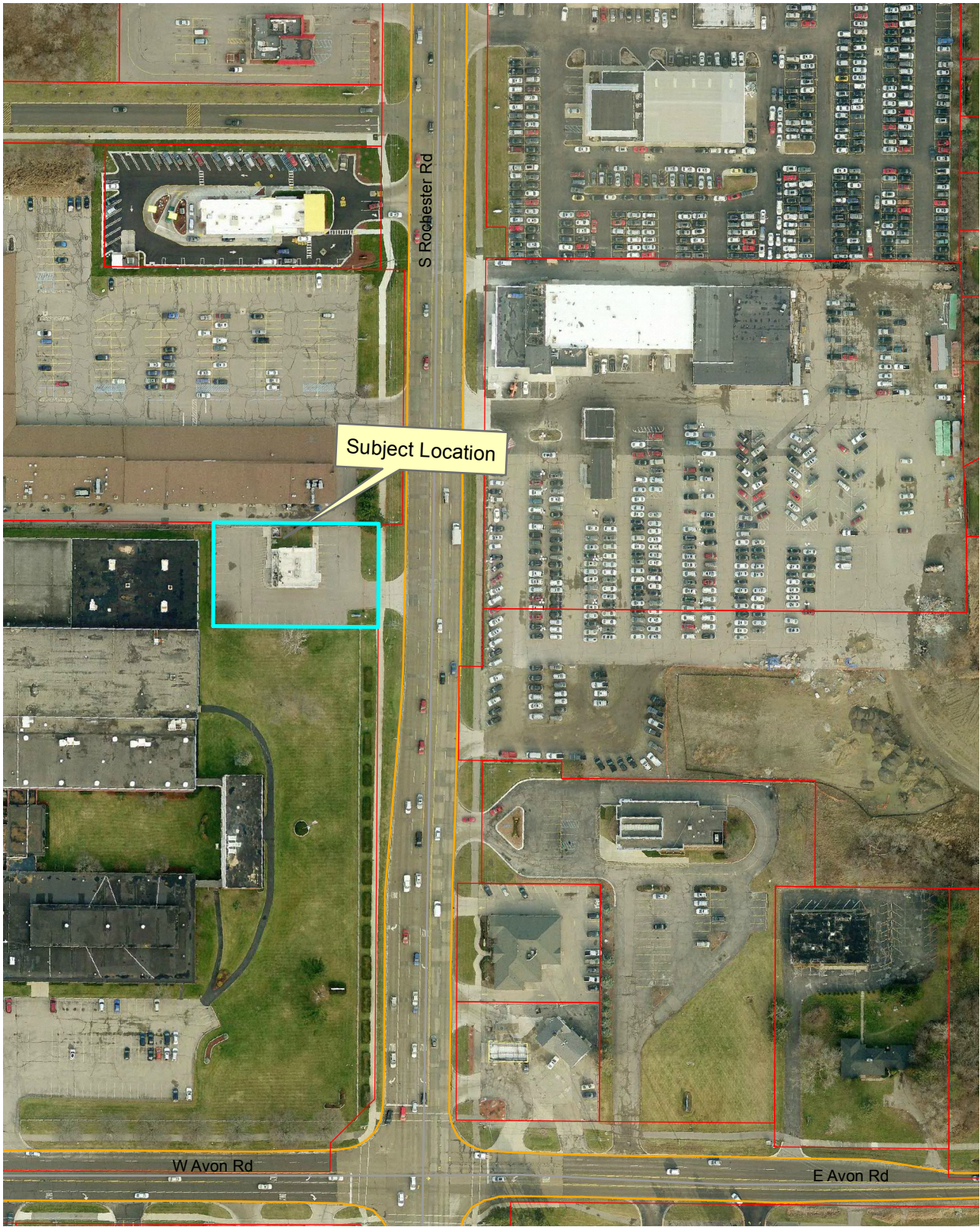


Location Map - Tim Hortons 940 S. Rochester Rd.



Legend

	TaxParcel With Street Name
	TaxParcel
	Map Edge
Photometry 2011Rely	
	RM - R_M1_1
	RM - R_M1_2
	RM - R_M1_3

Aerial photographs as of April 2010.
TaxParcel lines were obtained on 1/2/12 from Oakland County.
Although the information provided by this map is believed to be reliable, its accuracy is not warranted in any way. The City of Rochester Hills assumes no liability for any claims arising from the use of this map.

7-5-11

1 inch = 167 feet