

**BUILDING CODE INFORMATION - ROCHESTER HILLS, MICHIGAN**

THE DRAWINGS HAVE BEEN PREPARED IN ACCORDANCE WITH THE FOLLOWING CODES. NOTIFY THE ARCHITECT OF ANY CONFLICTS.

**CODES:**  
 • Building Code: 2006 Michigan Building Code  
 • Mechanical Code: 2006 Michigan Mechanical Code  
 • Plumbing Code: 2006 Michigan Plumbing Code  
 • Electric Code: 2005 NEC  
 • Barrier Free Code: 2006 Michigan Building Code, Chapter 11 (ICC/ANSI A117.1 (Section 1101.2))

**Energy Code:** 2007 Michigan Uniform Energy Code Rules, Part 10a ADMIN. 601.1989

**Health Dept Reg:** State of Michigan Department of Agriculture

**Fire Protection:** NFPA 13 automatic sprinkler system throughout. (Section 903.3.1.1)

**Use Group(s):** Non-Separated Mixed Use (Section 508.3.2)  
 Mercantile (M) (Section 309.1)  
 Moderate-Hazard Storage (S-1) (Section 311.2)

**Accessory Use (Section 508.3.1):**  
 Business (B) (Section 304.1)  
 Assembly (A2) (Section 303.1)  
 Assembly (A3) (Section 303.1)

**Construction Type:** Type IIB (Section 602.2)

**Allowable Area:** Unlimited Area (Actual Area: 156,546 sf) (Section 507.3)

**Allowable Height:** 55 ft (Actual Height: 35 ft. to midpoint on sloped entry)  
 Type IIB Construction/S-1 Occupancy - Most Restrictive

**Allowable Stories:** 2 Stories (Table 503 w/ Section 504 Sprinkler Increase)  
 (Actual Stories: 1)  
 Type IIB Construction/S-1 Occupancy - Most Restrictive (Section 413 referencing Chapter 23 of the FC)

**Special Use & Occupancy:** High Piled Combustible Storage  
 Based on 8,000 sf rack area, storage area is required to be sprinklered to the level required by the most hazardous commodity stored. Alternatively, engineering analysis will be required in conjunction with sprinkler design to (2) types of specific commodity items to determine the sprinkler head density in various areas. See Table 2205.2 of the 2003 IFC. Fire detection systems, specific fire-separation access and heat and smoke removal will not be required.

**Fire-Resistive Construction:**  
 IB Construction (Table 601) 0 hr.  
 Structural Frame (Table 601) 0 hr.  
 Bearing Walls (Table 601) 0 hr.  
 Interior (Table 601) 0 hr.  
 Exterior (Table 601) 0 hr.  
 Floor Construction (Table 601) 0 hr.  
 Roof Construction (Table 601) 0 hr.

**Fire - resistant rating of exterior walls based on fire separation distance (Table 602) (Fire Separation Distance)**  
 Exterior Walls 2-60 ft. 0 hr.

**Fire Extinguishers:** Provide in accordance with the International Fire Code (Section 906)

**Occupant Load:** Mercantile (30) 3918  
 Assembly (15) 274  
 Merc/Priv (200) 24  
 Business (100) 24  
 Storage/Mech (300) 64  
 Total 4324

**No. of Exits Required:** 4 (Greater than 1000 occupants) (Actual Exits Provided = 9) (Table 1018.1)

**Clearance Width:** 4304 Occupants x 0.15 in. per occupant = 645.60 in. clear exit width (Table 1005.1)  
 (Actual width provided: 749.24" total; 637.115" width)

**Max. Travel Distance:** 250 ft. (Mercantile and storage occupancy, sprinklered building) (Table 1016.1)

**Max. Common Path of Travel:** 75 ft. Mercantile and Assembly Occupants  
 100 ft. Storage and Business Occupancies (sprinklered buildings) (Section 1016.3)

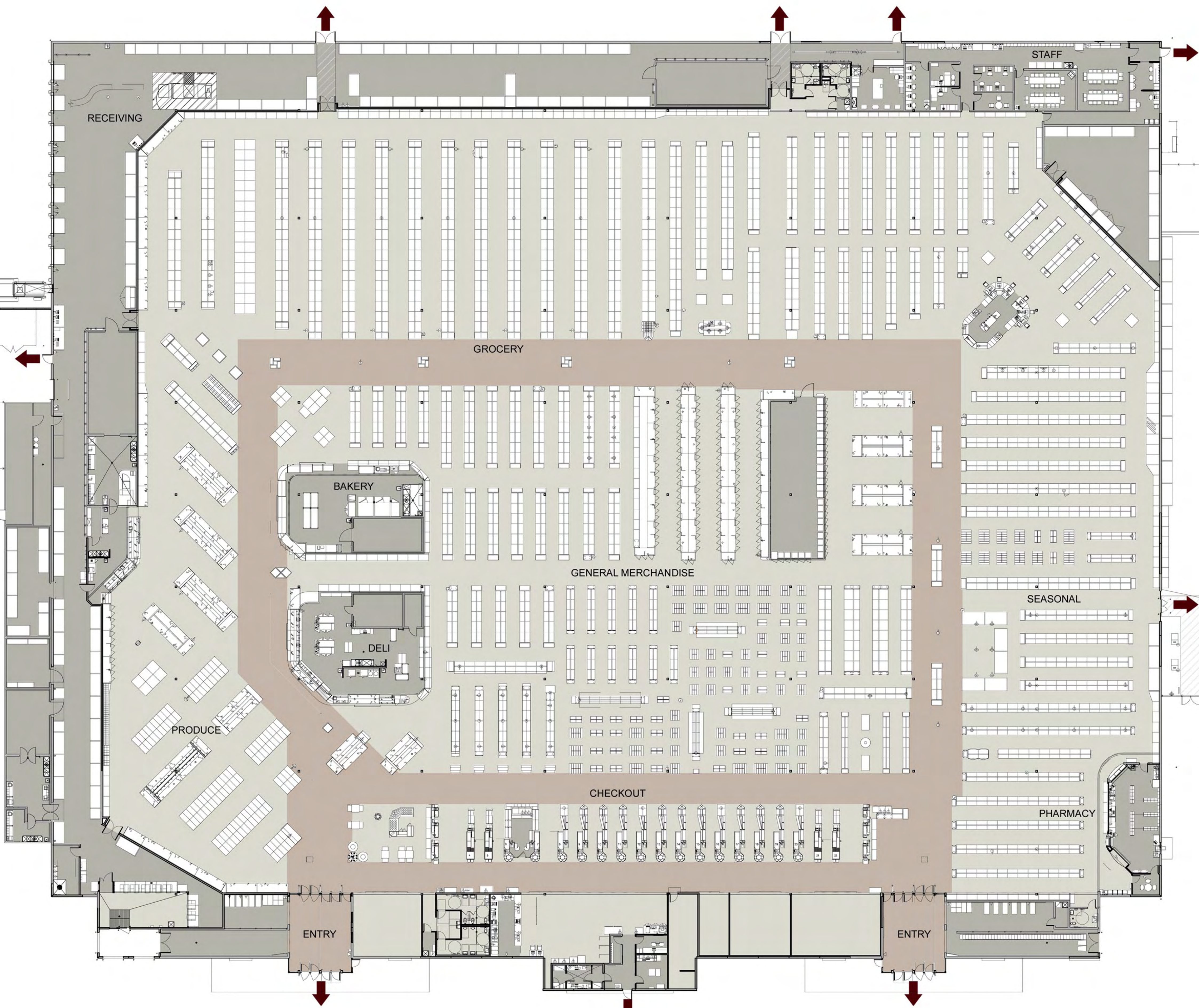
**Plumbing Fixtures Requirements:** (2008 MPC Table 402.1) (Occupancy, Mercantile)

|   | Men  | Women                   | Family       |
|---|--|-------------------------|--------------|
| <b>Water Closets:</b> (1-1000)            | 3 req'd<br>(2 provided)                                | 3 req'd<br>(5 provided) | (0 provided) |
| <b>Urinals:</b> (Up to 2/3 of req'd WC's) | 0 req'd<br>(3 provided)                                | (N.A.)                  | (N.A.)       |
| <b>Lavatories:</b> (1-1000)               | 2 req'd<br>(3 provided)                                | 2 req'd<br>(3 provided) | (0 provided) |
| <b>Drinking Fountains:</b> (1-1000)       | 3 total req'd<br>(5 provided + cups available at Deli) |                         |              |
| <b>Service Sinks:</b> (1 total)           | 1 total req'd<br>(2 provided)                          |                         |              |

1. Note: Required plumbing fixtures based on projected maximum store occupancy in accordance with Mejer affidavit.

2. Plumbing facilities must be provided for employees not more than 500 ft. from the employee's regular working area. (2008 MPC Section 403.3)

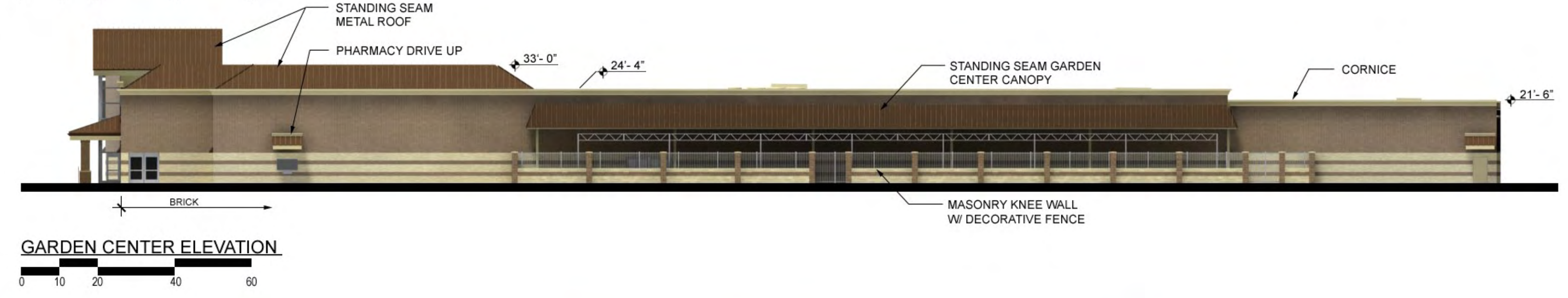
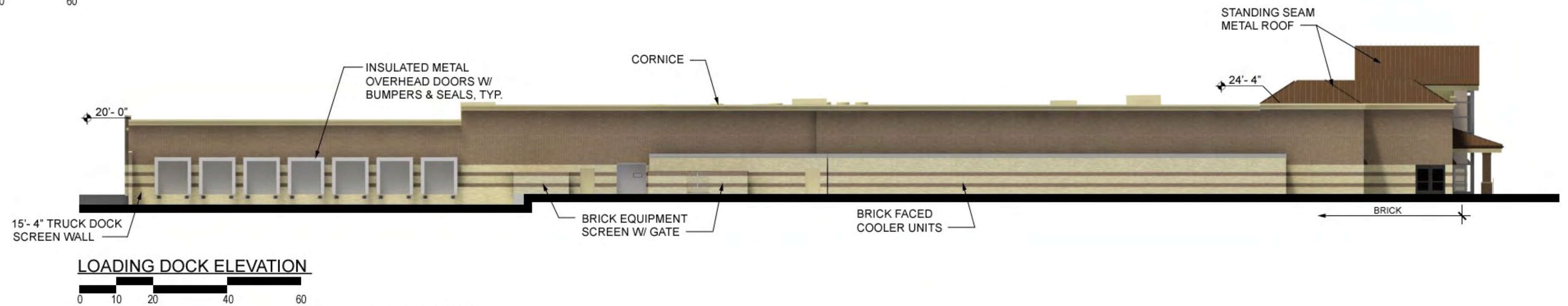
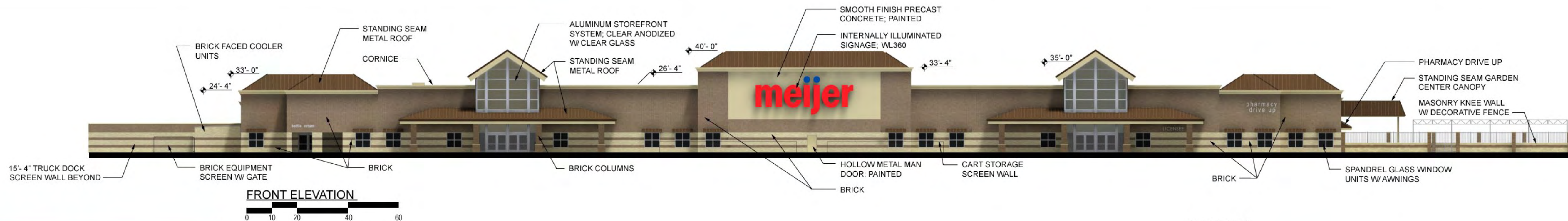
3. In Mercantile occupancies, an accessible toilet room shall be provided where an aggregate of 6 or more male and female water closets are required. (2008 MPC Section 1109.2.1)



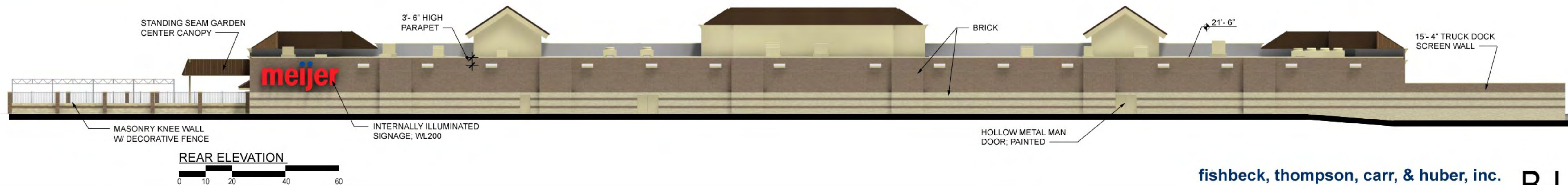
**OVERALL FLOOR PLAN**  
 SCALE: 1" = 20'  
 0 10 20 40

| TAG   | ITEM   | SPECIFICATION SECTION | BASIS OF COLOR SELECTION | COLOR                                   | NOTES                         |
|-------|--|-----------------------|--------------------------|---|-------------------------------|
| EF-2  | DARK UTILITY BRICK (4x4x12 NOMINAL) AT THIN BRICK PANEL SYSTEM   | 04810                 | GLN-GRY                  | FLASHED WHITE                           | SEE ELEVATIONS FOR LOCATION   |
| EF-3  | LIGHT UTILITY BRICK (4x4x12 NOMINAL) AT THIN BRICK PANEL SYSTEM  | 04810                 | GLN-GRY                  | DUTCH GRAY VELOUR                       | SEE ELEVATIONS FOR LOCATION   |
| EF-4  | ENTRANCE TOWER FASCIA, SOFFIT AND EDGE FLASHING  | 07820                 | PAC-CLAD                 | ALMOND                                  | PREFINISHED                   |
| EF-5  | ENTRANCE AND STOREFRONTS   | 08411                 | ---                      | CLEAR ANODIZED ALUMINUM                 | PREFINISHED                   |
| EF-6  | SECTIONAL OVERHEAD DOORS   | 08361                 | ---                      | WHITE                                   | PREFINISHED                   |
| EF-12 | SHEET METAL FLASHING AND TRIM<br>*ENTRANCE CANOPY EDGE FLASHING AND COUNTER FLASHING<br>*PHARMACY CANOPY EDGE FLASHING AND COUNTER FLASHING  | 07820                 | PAC-CLAD                 | MANHARD BROWN                           | PREFINISHED                   |
| EF-19 | INSULATED COOLER WALLS   | 09900                 | SHERWIN WILLIAMS         | SW 6142 MACADAMA                        | FIELD PAINT PER 09900.3.A.B.1 |
| EF-27 | METAL PANELS AT GARDEN CENTER CANOPY   | 07411                 | PAC-CLAD                 | ALMOND                                  | PREFINISHED                   |
| EF-46 | SHEET METAL FLASHING AND TRIM<br>*ROOFING AT GARDEN CENTER CANOPY<br>*EDGE FLASHING AT DECORATIVE CORNICE  | 07820                 | PAC-CLAD                 | ALMOND                                  | PREFINISHED                   |
| EF-47 | SHEET METAL FLASHING AND TRIM<br>*ROOF FLASHING AT OUTDOOR FREEZERS AND COOLERS<br>*EDGE FLASHING AT ROOF AND PARAPET<br>*HORIZONTAL METAL PANELS AT BACK OF ENTRANCE TOWERS<br>*ROOFING AND DOWN SPOUTS AT CANOPY COLUMNS<br>*ENTRANCE CANOPY FASCIA<br>*PHARMACY CANOPY FASCIA<br>*FASCIA AT SCULPTOR<br>*CAP FLASHING OVER BRICK VENEER | 07820                 | PAC-CLAD                 | ALMOND                                  | PREFINISHED                   |
| EF-48 | FIELD PAINTED STEEL<br>*STEEL TUBE COLUMNS AT GARDEN CENTER CANOPIES   | 09900                 | SHERWIN WILLIAMS         | SW 7075 WEB GREY                        | FIELD PAINTED                 |
| EF-49 | FIELD PAINTED STEEL<br>*GARDEN CENTER STEEL CANOPY FRAMING AND METAL DECK<br>*SLOPED ROOF AT ENTRANCE  | 09900                 | SHERWIN WILLIAMS         | SITE WHITE SW 7070                      | FIELD PAINTED                 |
| EF-50 | FIELD PAINTED STEEL<br>*MENT STEEL PLATE FRAMING AT SECTIONAL OVERHEAD DOORS<br>*ACROSSING READING BRIDGE  | 09900                 | SHERWIN WILLIAMS         | SW 6142 MACADAMA                        | FIELD PAINTED                 |
| EF-51 | FIELD PAINTED STEEL<br>*STEEL TUBE FRAMING AT PHARMACY CANOPIES  | 09900                 | ---                      | CUSTOM COLOR TO MATCH PAC-CLAD "ALMOND" | FIELD PAINTED                 |
| EF-52 | SALVANIZED FINISH STEEL<br>*STEEL TUBE HANGER ASSEMBLIES AT PHARMACY CANOPY<br>*STEEL TUBE COLUMNS AT ENTRANCES  | 05000                 | ---                      | ---                                     | HOT DIP GALVANIZED            |
| EF-53 | FIELD PAINTED WOOD<br>*STRAKED WOOD FRAME AT SECTIONAL OVERHEAD DOORS  | 09900                 | SHERWIN WILLIAMS         | SW 6142 MACADAMA                        | FIELD PAINTED                 |
| EF-56 | NOT USED   |                       |                          |   |                               |
| EF-57 | FIELD PAINTED DECORATIVE CORNICE   | 09900                 | SHERWIN WILLIAMS         | SW 6142 MACADAMA                        | FIELD PAINTED                 |
| EF-58 | ENTRANCE CANOPY AND PHARMACY CANOPY SOFFIT   | 09900                 | PAC-CLAD                 | BONE WHITE                              | PREFINISHED                   |
| EF-59 | STANDING SEAM METAL ROOFING<br>*ENTRANCE CANOPY AND ENTRANCE TOWER<br>*PHARMACY CANOPY   | 07411                 | PAC-CLAD                 | MANHARD BROWN                           | PREFINISHED                   |
| EF-60 | ALUMINUM-CLAD INSULATED SPANREL PANEL  | 08411                 | ---                      | COLOR TO MATCH EF-48 WEB GREY           | PREFINISHED                   |
| EF-61 | NOT USED   |                       |                          |   |                               |





NOTES:  
 1. ALL BUILDING MOUNTED SIGNS SHALL BE IN CONFORMANCE WITH THE CITY OF ROCHESTER HILLS.  
 2. ROOFTOP EQUIPMENT IS SCREENED BY WAY OF PARAPETS AND STANDING SEAM ROOFS.





**SYMBOL LEGEND**

- INTERIOR WALL TYPE: SEE A501
- DOOR NUMBER
- KEY NOTE, SEE THIS SHEET
- TOILET ROOM ACCESSORIES: SEE A401
- BARRIER FREE/ADA ACCESSIBLE
- METAL STUD WALL
- CAST IN PLACE OR PRECAST CONCRETE
- FLOOR SINK: SEE MECHANICAL
- FLOOR DRAIN: SEE MECHANICAL
- PIPE BOLLARD
- HDPE TRIM

**GENERAL NOTES**

1. ALL DIMENSIONS INDICATED ON DRAWINGS SHALL BE VERIFIED PRIOR TO CONSTRUCTION.
2. ALL DIMENSIONS ON FLOOR PLANS ARE SHOWN TO FACE OF METAL STUDS OR NOMINAL FACE OF PRECAST UNLESS NOTED OTHERWISE.
3. SEE ROOM FINISH SCHEDULE AND FLOOR FINISH PLAN FOR FINISHES.
4. EXTEND ALL WALLS TIGHT TO DECK ABOVE UNLESS NOTED OTHERWISE.
5. TOP OF SIDEWALK OUTSIDE OF EXIT DOORS SHALL BE HELD 1/4" BELOW FINISHED FLOOR UNO TOP OF WALK HELD 1/2" BELOW FINISH FLOOR AT DOOR 1014.
6. REFER TO STRUCTURAL DRAWINGS FOR ALL STEEL SHAPES AND SIZES.
7. MAIN FLOOR ELEVATIONS: ASSUMED 100'-0", SEE CIVIL DRAWINGS FOR ACTUAL ELEVATIONS.
8. REFER TO A401 FOR ADDITIONAL FINISH INFORMATION.
9. REFER TO MEJER Q-SHEETS AND MILLWORK SHEETS FOR ADDITIONAL RELATED INFORMATION.
10. ALL FLOOR DRAIN RIM ELEVATIONS TO BE AT ELEVATION 100'-0" UNLESS NOTED OTHERWISE.

**KEY NOTES**

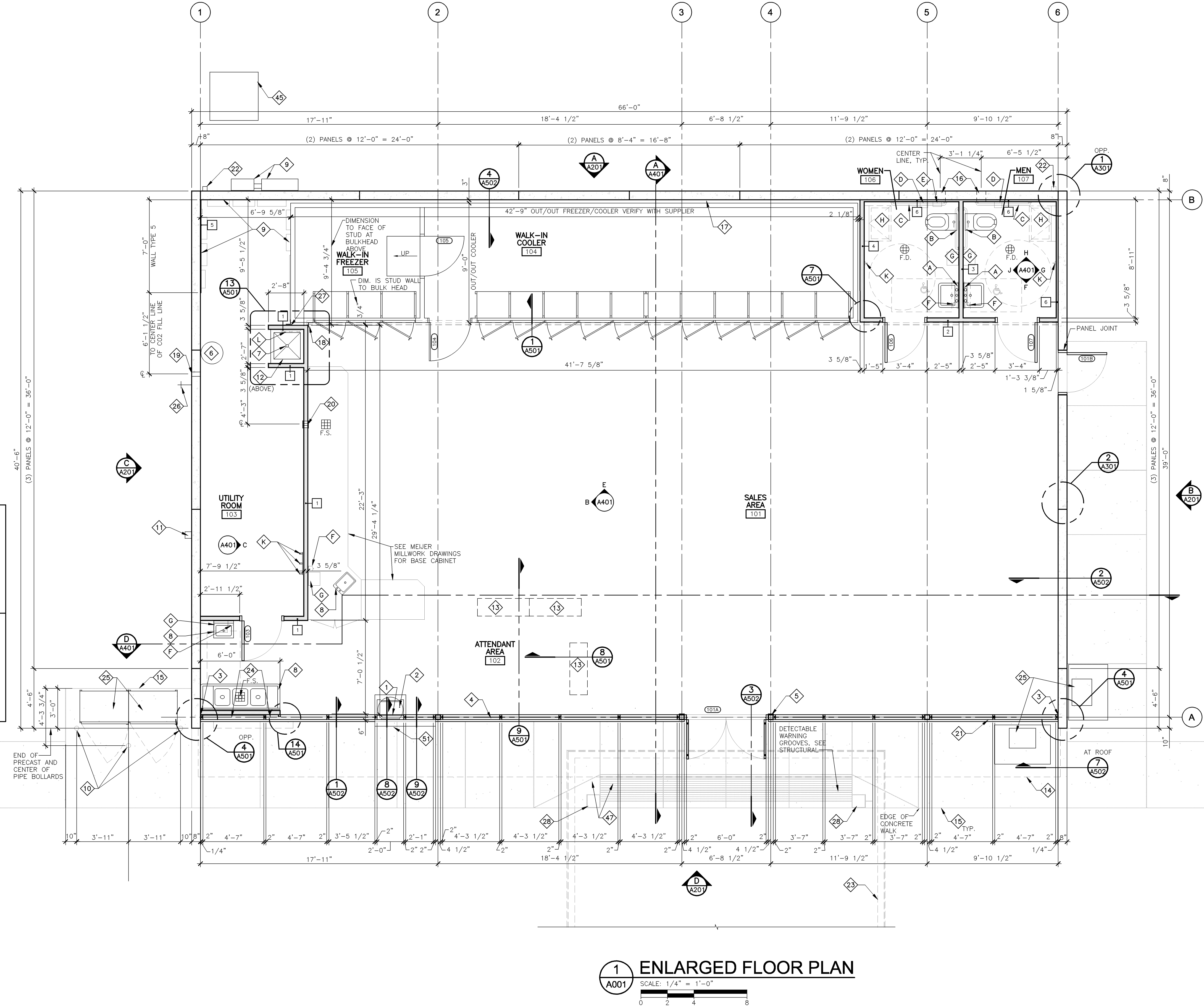
- 1 REVOLVING PACKAGE EXCHANGE MODEL LSW-CR 2418, AS MANUFACTURED BY CREATIVE INDUSTRIES, INDIANAPOLIS, IN (317) 547-4353. NOTCH INSIDE DOOR TO ALLOW CARD READER TO BE USED BY GUEST.
- 2 PROVIDE HOLE FOR PIN LOCK.
- 3 1/4" SHIM WITH SEALANT TYPICAL AT PERIMETER.
- 4 1" INSULATING GLASS IN 4 1/2"-2" CLEAR ANODIZED ALUMINUM FRAMES (TYPICAL).
- 5 CLEAR ANODIZED ALUMINUM CLOSURES, TYP. AT COLUMNS.
- 6 CO2 TANK, SEE MEJER Q-SHEETS.
- 7 SERVICE SINK, SEE MECHANICAL.
- 8 SINK, SEE MECHANICAL.
- 9 ELECTRICAL EQUIPMENT, SEE ELECTRICAL.
- 10 EXTERIOR PIPE BOLLARD, SEE STRUCTURAL.
- 11 GAS METER, SEE MECHANICAL.
- 12 WATER HEATER SUPPORT MOUNTED TO WALL ABOVE; SEE DETAIL 10/A501 AND MECHANICAL.
- 13 CIGARETTE DISPENSER ABOVE, SEE MEJER Q-SHEETS.
- 14 LINE OF ROOF EDGE ABOVE.
- 15 EXTERIOR CONCRETE, SEE STRUCTURAL.
- 16 OPENING FOR EXHAUST VENT THRU WALL; SEE MECHANICAL.
- 17 3" AIR GAP BETWEEN CONCRETE WALL PANEL AND REFRIGERATION COOLER/FREEZER.
- 18 4"x4" 90° PVC MOLDED CORNER CLOSURE TO GYP BOARD BULKHEAD ABOVE, COLOR WHITE.
- 19 FILL LINE FOR CO2 SYSTEMS, 2" DIA. HOLE, 3'-6" AFF IN CONCRETE WALL PANEL, COORDINATE WITH MEJER Q-SHEETS.
- 20 4" PVC THRU WALL WITH FINISH FLANGE (BOTH SIDES) TO ROUTE SODA SYRUP LINES TO POP DISPENSER, COORDINATE WITH MEJER Q-SHEETS.
- 21 LINE OF CONCRETE WALL BELOW.
- 22 PREFINISHED METAL DOWN SPOUT.
- 23 FUEL ISLAND CANOPY AND GUTTER ABOVE, COORDINATE WITH FUEL ISLAND CANOPY DRAWINGS.
- 24 PREFINISHED INSULATED ALUMINUM PANELS.
- 25 EQUIPMENT, SEE MEJER Q-SHEETS.
- 26 WATER HYDRANT, SEE MECHANICAL.
- 27 4"x4" 90° PVC MOLDED CORNER CLOSURE TO TOP OF WALK-IN FREEZER, COLOR WHITE.
- 28 FUEL ISLAND CANOPY COLUMN, COORDINATE WITH FUEL ISLAND CANOPY DRAWINGS.
- 29 CONCRETE ISLAND, COORDINATE WITH FUEL ISLAND DRAWINGS.
- 30 MULTI-PRODUCT DISPENSER, COORDINATE WITH FUEL ISLAND DRAWINGS.
- 31 INTERSTITIAL MONITOR, COORDINATE WITH FUEL ISLAND DRAWINGS.
- 32 BOLLARD, COORDINATE WITH FUEL ISLAND DRAWINGS.
- 33 UNDERGROUND FUEL TANK, COORDINATE WITH FUEL ISLAND DRAWINGS.
- 34 NOT USED
- 35 MANHOLE, COORDINATE WITH FUEL ISLAND DRAWINGS.
- 36 NOT USED
- 37 VENT LOCATION, COORDINATE WITH FUEL ISLAND DRAWINGS.
- 38 STAGE I VAPOR RECOVERY, COORDINATE WITH FUEL ISLAND DRAWINGS.
- 39 PAVEMENT, COORDINATE WITH CIVIL DRAWINGS.
- 40 TRASH DUMPSTER AND CONCRETE PAD, SEE STRUCTURAL.
- 41 AIR COMPRESSOR/VACUUM CONCRETE PAD, SEE STRUCTURAL.
- 42 CONCRETE ISLAND SLAB, COORDINATE WITH FUEL ISLAND DRAWINGS.
- 43 CONCRETE DRIVE SLAB, COORDINATE WITH FUEL ISLAND DRAWINGS.
- 44 CONCRETE CURB, COORDINATE WITH CIVIL DRAWINGS.
- 45 TRANSFORMER, COORDINATE WITH ELECTRICAL DRAWINGS.
- 46 OVERFLOW SCUPPER, COORDINATE WITH FUEL ISLAND CANOPY DRAWINGS.
- 47 BARRIER FREE RAMP, SEE STRUCTURAL.
- 48 FUTURE CAR WASH.
- 49 FUTURE CAR WASH DRIVE ENTRANCE AND EXIT.
- 50 VENT RISER, COORDINATE WITH FUEL ISLAND DRAWINGS.
- 51 STAINLESS STEEL TRANSACTION SHELF: 18GA STAINLESS STEEL 6" WIDE BY THE WIDTH BETWEEN MULLIONS. EDGES SHALL BE HEMMED. SUPPORTS TO BE STAINLESS STEEL MOUNTED TO MULLIONS.
- 52 MONITORING WELL, COORDINATE WITH FUEL ISLAND DRAWINGS.
- 53 FILL CONNECTION, COORDINATE WITH FUEL ISLAND DRAWINGS.
- 54 INSTALL (2) HEAVY-DUTY STORAGE BRACKETS EQUAL TO "STANLEY HARDWARE" ITEM #C08309. MOUNT BRACKETS 6"-6" APART, CENTERED INSIDE THE DUMPSTER ENCLOSURE AND APPROX. 3'-0" ABOVE DUMPSTER SLAB.
- 55 PROVIDE AND INSTALL 16'-8" LONG x 4" DIA. PVC SCHEDULE 40 PIPE FOR GAS TANK DIP-STICK HOLDER. PROVIDE ONE SEALED END CAP AND ONE WITH SCREW TYPE CLEAN-OUT PLUG. SECURE ASSEMBLY WITH (2) GALV. PIPE CLAMPS. COORDINATE LOCATION WITH MEJER CONSTRUCTION MANAGER. MOUNT 48" ABOVE FINISH GRADE TO CENTER OF PIPE.
- 56 GREASE TRAP ACCESS LID, SEE MECHANICAL.

Drawn By: TML  
Designer: GCS  
Reviewer:  
Manager: DSS

Hard copy is intended to be 30"x42" when plotted. Scale(s) indicated and graphic quality may not be accurate for any other size.

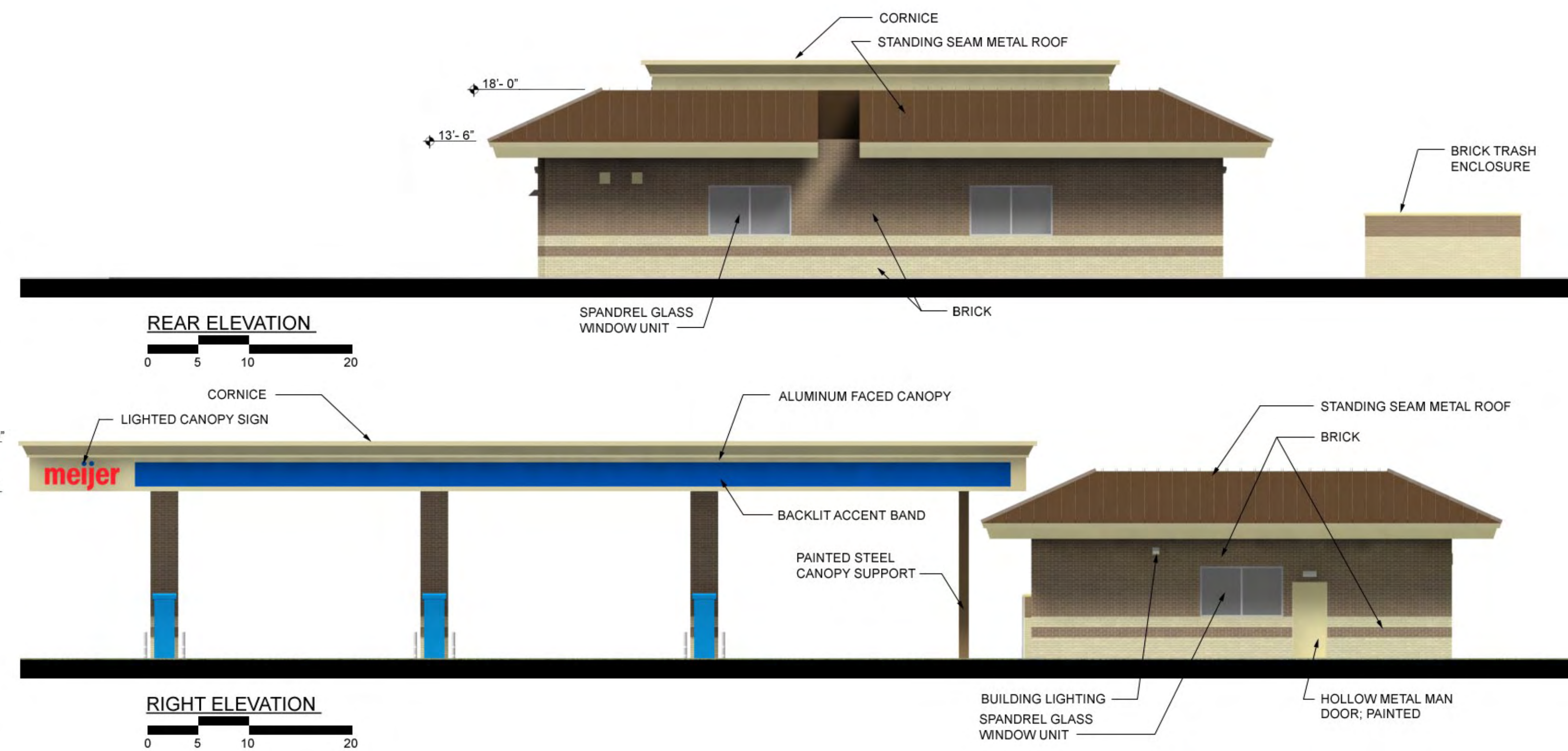
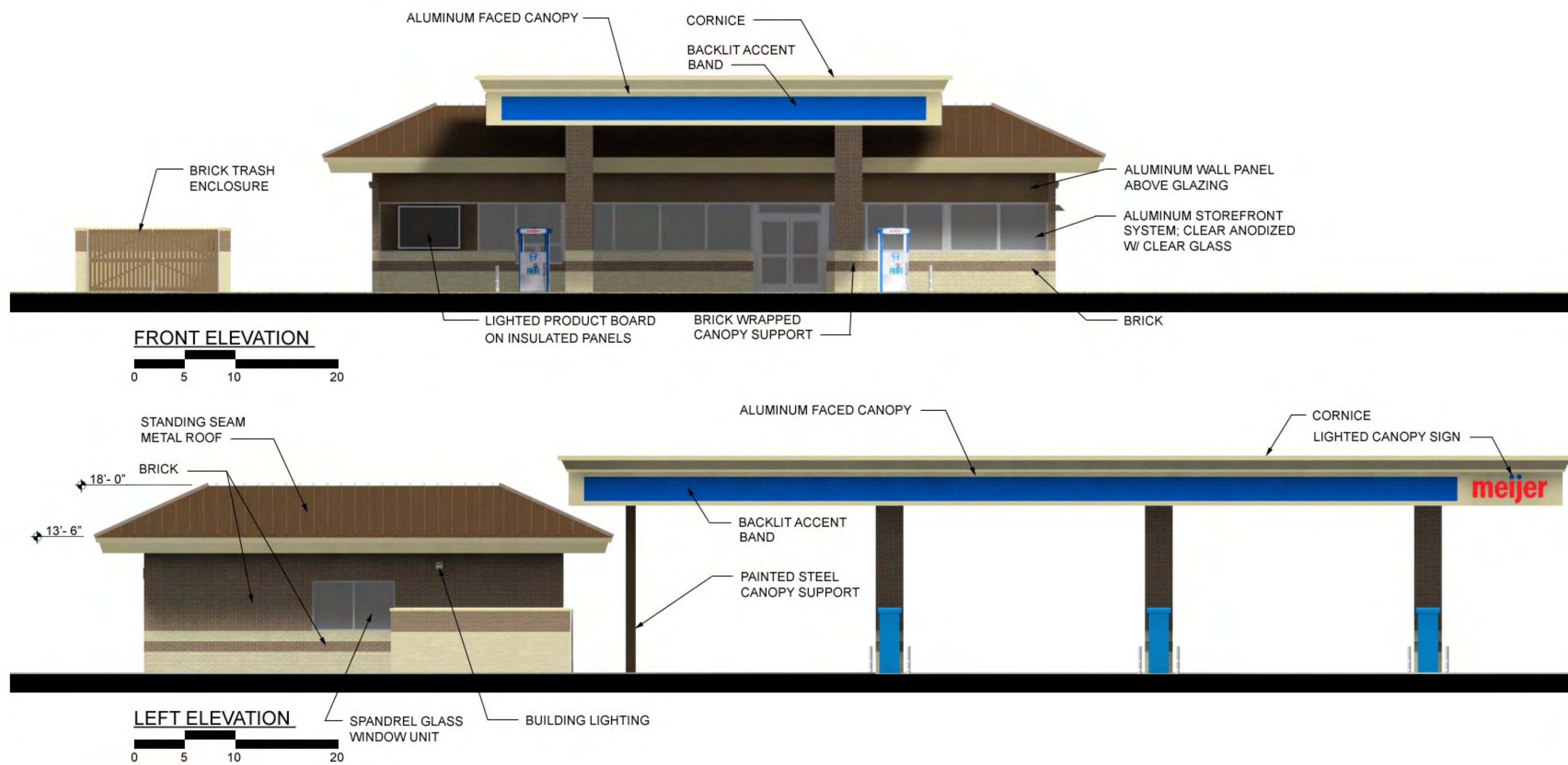
PROJECT NO.  
J-----  
SHEET NO.

**A101**



PLOT INFO: U:\CAD\0794001\CD\A101-05A.DWG USER: GCS  
TIME: 9:18:26 AM DATE: 10/31/2008  
PROJECT: MEJER Q-SHEETS AND MILLWORK SHEETS FOR ADDITIONAL RELATED INFORMATION  
DRAWING NO: 0794001-05A.DWG  
DRAWN BY: TML  
CHECKED BY: GCS  
DESIGNED BY: GCS  
DATE: 10/31/2008  
SCALE: 1/4" = 1'-0"





Rochester Hills, Michigan

fishbeck, thompson, carr, & huber, inc.  
12.30.2008

G07940

B



M - 59

PROPOSED MONUMENT SIGN

**meijer**

14.3± ACRES

VIEW 'B' FROM FUTURE RETAIL TENANT

VIEW 'A' FROM FUTURE RETAIL TENANT

VIEW 'C' FROM SOUTH ADAMS ROAD

EXISTING PROPERTY LINE

RETAIL T  
35,500 S.F.

BUILDING K  
13,850 S.F.

BUILDING L  
25,600 S.F.

BUILDING M  
50,000 S.F.

304 PARKING SPACES

2.2± ACRES

CONVENIENCE STORE

SOUTH ADAMS ROAD

MARKET PLACE CIRCLE

BUILDING 'G'  
PETSHOTEL  
27,930 S.F.

BUILDING 'C'  
8,000 S.F.

BUILDING 'B'  
10,800 S.F.

BUILDING 'D'  
18,800 S.F.

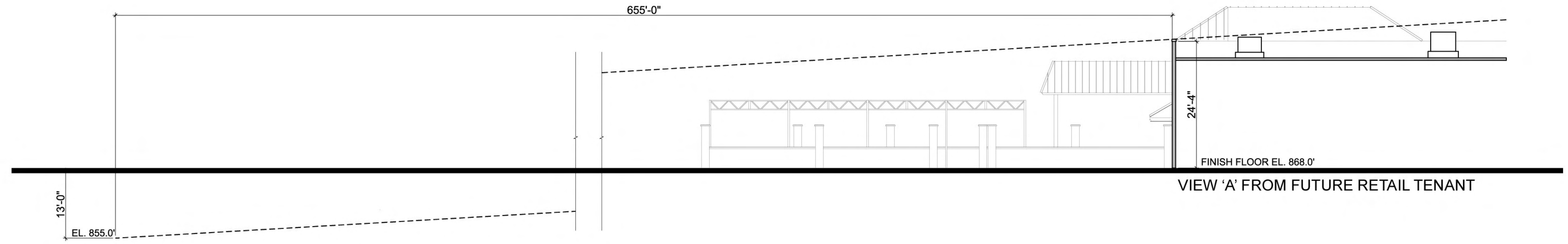
SIGHTLINE SECTION  
VIEW POINT LOCATIONS

SCALE: 1" = 100' 0"

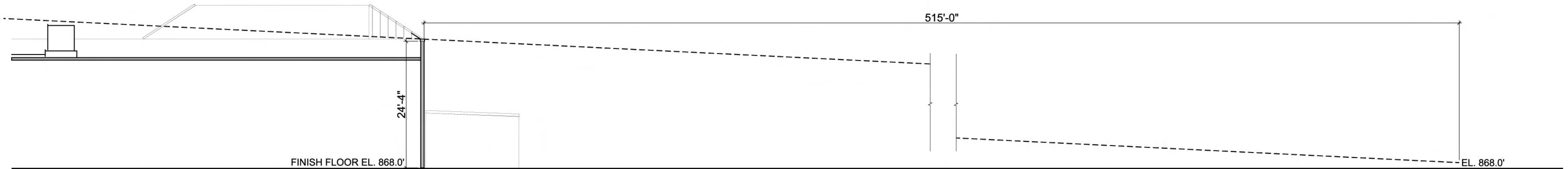
0 50 100 200



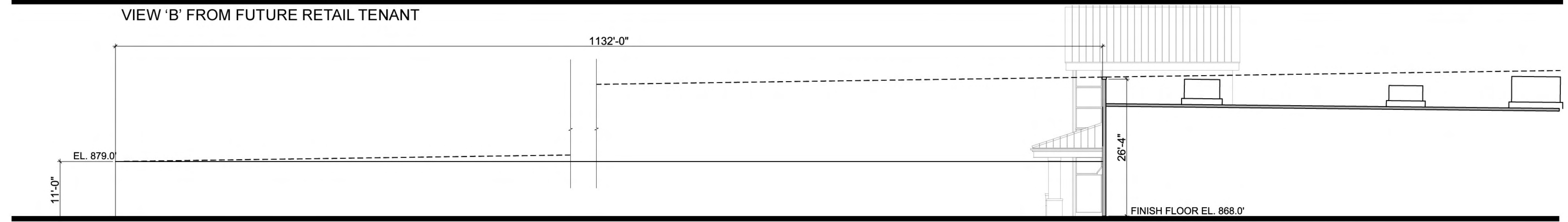




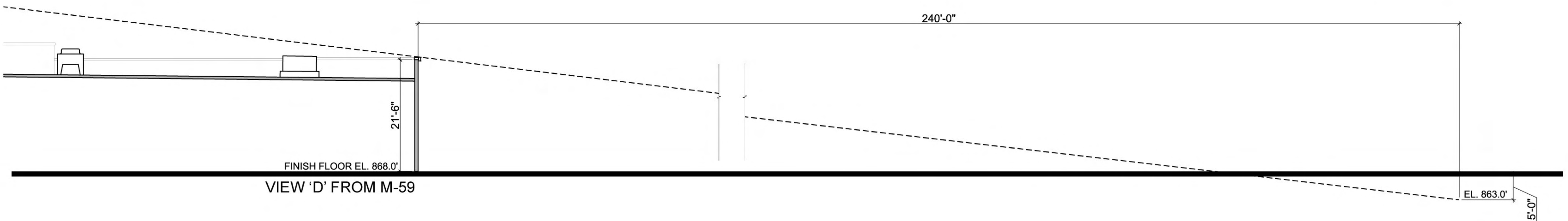
VIEW 'A' FROM FUTURE RETAIL TENANT



VIEW 'B' FROM FUTURE RETAIL TENANT



VIEW 'C' FROM SOUTH ADAMS ROAD



VIEW 'D' FROM M-59



ADAMS RD @  
 CURVE 1  
 Δ = 100°33'15" RT  
 R = 820.00'  
 T = 986.89'  
 L = 1439.10'  
 E = 463.10'  
 PC = 113+67.07  
 PI = 123+53.97  
 PT = 128+06.18  
 PC E = 13434550.08, N = 416764.51  
 PI E = 13434501.12, N = 417750.07  
 PT E = 13435478.97, N = 417617.68  
 2% SUPERELEVATION, f = 0.145,  
 45 MPH DESIGN SPEED

ADAMS RD @  
 CURVE 2  
 Δ = 171°2'50" LT  
 R = 1400.00'  
 T = 211.90'  
 L = 420.61'  
 E = 15.95'  
 PC = 133+23.08  
 PI = 135+34.98  
 PT = 137+43.79  
 PC E = 13435991.14, N = 417548.34  
 PI E = 13436201.11, N = 417519.91  
 PT E = 13436410.18, N = 417554.91  
 2% SUPERELEVATION, f = 0.08,  
 45 MPH DESIGN SPEED

| QUANTITIES THIS SHEET                             |           |
|---|-----------|
| DESCRIPTION                                       | QUANTITY  |
| Curb and Gutter, Conc, Det B-3                    | 2410 Ft   |
| Underdrain, 6 inch, Modified                      | 2400 Ft   |
| Conc Pavt, Nonreinf, 10 inch                      | 7983 Syd  |
| Conc Pavt, Misc, Nonreinf, 10 inch                | 373 Syd   |
| Conc Pavt W/ Integral Curb, Nonreinf, 10 inch *** | 888 Syd   |
| Aggregate Base, 8 inch, CIP, 21AA, Modified       | 10073 Syd |
| Open Graded Drainage Course, 6 inch (5G)          | 10073 Syd |
| Geotextile Fabric, Type NW 8                      | 20146 Syd |
| Fertilizer, Chemical Nutrient, Cl A               | 150 Lb    |
| Mulch Blanket                                     | 3186 Syd  |
| Seeding, Mixture TUF                              | 145 Lb    |
| Topsoil Surface, Furn, 3 inch                     | 3186 Syd  |
| Water, Sodding/Seeding                            | 11 Unit   |
| Erosion Control, Silt Fence, Modified             | 2404 Ft   |
| Excavation, Earth                                 | 9511 Cyd  |
| Embankment, CIP                                   | 462 Cyd   |
| Fence, Chain Link, 72 inch                        | 100 Ft    |

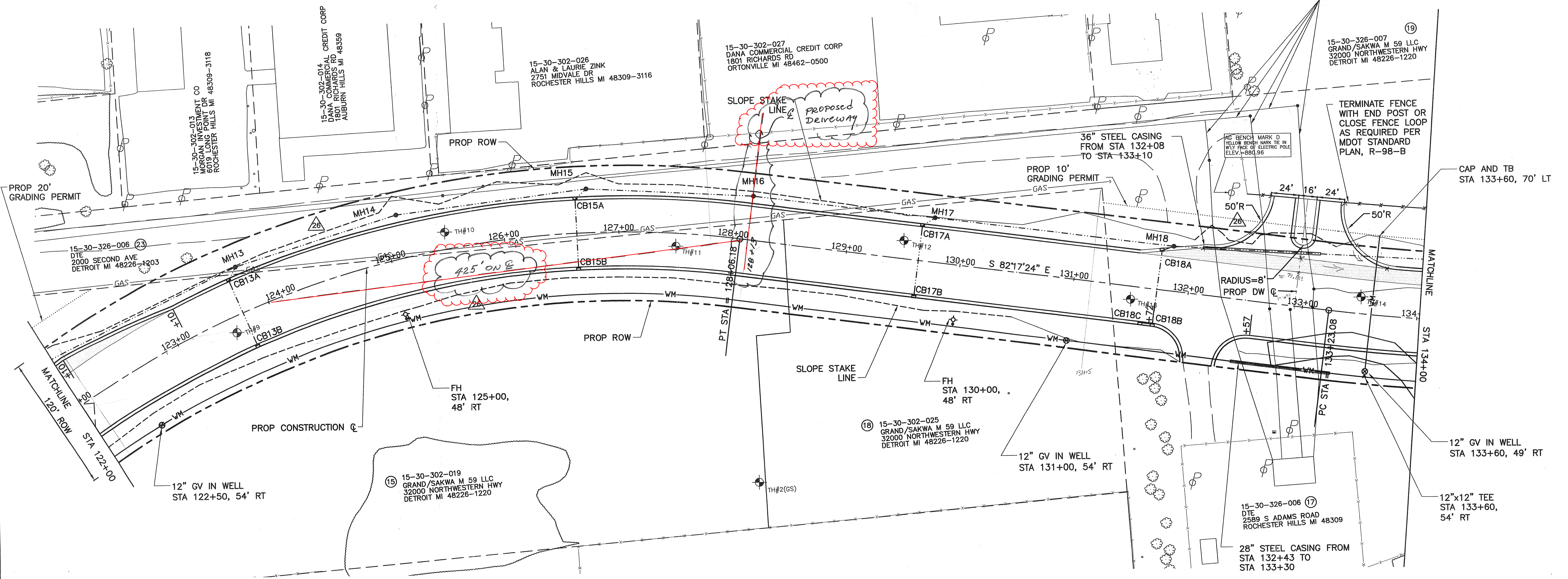
48  
 26

\*\*\* Applied for Commercial Driveway Approach

| QUANTITIES THIS SHEET                                     |          |
|---|----------|
| DESCRIPTION   | QUANTITY |
| Dr Structure, Add Depth of 48 inch Dia, 8 feet to 15 feet | 4 Ft     |
| Dr Structure, Add Depth of 48 inch Dia, More Than 15 feet | 2 Ft     |
| Gate Valve, 12 inch                                       | 3 Ea     |
| Gate Well, 72 inch, Dia                                   | 3 Ea     |
| Fire Hydrant  | 2 Ea     |
| Water Main, DI, 6 inch, Tr Det F                          | 17 Ft    |
| Water Main, DI, 12 inch, Tr Det G                         | 1320 Ft  |
| Dr Structure Cover  | 1140 Lb  |
| Steel Casing Pipe, 36 inch, Jacked in Place               | 102 Ft   |
| Steel Casing Pipe, 28 inch, Jacked in Place               | 87 Ft    |
| Joint, Contraction, W                                     | 5164 Ft  |

| STRUCTURE NUMBER | STATION   |        | SIDE | Drainage Structure<br>4' Diameter |          |          | Class C76-IV<br>Sewer, Trench<br>Detail B |           |           |           | Drainage<br>Structure<br>Cover |     | Erosion Control,<br>Inlet Protection,<br>Fabric Drop,<br>Modified |    |
|------------------|-----------|--------|------|-----------------------------------|----------|----------|---|-----------|-----------|-----------|--------------------------------|-----|---|----|
|                  | FROM/AT   | OFFSET |      | MH<br>W/2'<br>SUMP<br>EA          | MH<br>EA | CB<br>EA | 12"<br>FT                                 | 15"<br>FT | 18"<br>FT | 24"<br>FT | TYPE                           | LBS |   | EA |
| CB13B            | 122+00.00 | 39.50  | R    |                                   |          |          |   |           | 173       |           |                                | J   | 655   | 1  |
| CB13A            | 123+63.19 | 31.33  | L    |                                   |          |          |   |           |           |           |                                | J   | 655   | 1  |
| MH13             | 123+72.73 | 39.50  | L    |                                   |          | 1        |   |           |           |           |                                | B   | 350   |    |
| MH14             | 125+13.25 | 39.50  | L    |                                   |          | 1        |   |           |           |           |                                | B   | 350   |    |
| CB15B            | 126+63.29 | 31.33  | R    |                                   |          |          | 1   |           |           |           |                                | J   | 655   | 1  |
| CB15A            | 126+63.29 | 31.33  | L    |                                   |          |          | 1   |           |           |           |                                | J   | 655   | 1  |
| MH15             | 126+72.84 | 39.50  | L    |                                   |          | 1        |   |           |           |           |                                | B   | 350   |    |
| MH16             | 128+13.34 | 39.50  | L    |                                   |          | 1        |   |           |           |           |                                | B   | 350   |    |
| CB17B            | 129+63.34 | 31.33  | R    |                                   |          |          |   | 1         |           |           |                                | J   | 655   | 1  |
| CB17A            | 129+63.34 | 31.33  | L    |                                   |          |          |   | 1         |           |           |                                | J   | 655   | 1  |
| MH17             | 129+73.34 | 39.50  | L    | 1                                 |          |          |   |           |           |           |                                | B   | 350   |    |
| CB18C            | 131+61.58 | 31.33  | R    |                                   |          |          |   | 1         |           |           |                                | J   | 655   | 1  |
| CB18B            | 131+72.47 | 31.33  | R    |                                   |          |          |   | 1         |           |           |                                | J   | 655   | 1  |
| CB18A            | 131+72.47 | 31.33  | L    |                                   |          |          |   | 1         |           |           |                                | J   | 655   | 1  |
| MH18             | 131+82.63 | 39.50  | L    | 1                                 |          |          |   |           |           |           |                                | B   | 350   |    |
| TOTALS           |           |        |      | 2                                 | 4        | 9        | 311                                       | 173       | 314       | 664       |                                |     | 7995  | 9  |

SECTION 30  
 T 3 N, R 11 E  
 CITY OF ROCHESTER HILLS



PROP 20' GRADING PERMIT

MATCHLINE  
 120' ROW STA 122+00

CAUTION-CRITICAL  
 UNDERGROUND UTILITY

TERMINATE FENCE  
 WITH END POST OR  
 CLOSE FENCE LOOP  
 AS REQUIRED PER  
 MDT STANDARD  
 PLAN, R-98-B

CAP AND TB  
 STA 133+60, 70' LT

MATCHLINE  
 STA 134+00

12" GV IN WELL  
 STA 133+60, 49' RT

12"x12" TEE  
 STA 133+60,  
 54' RT

LEGEND

- FILL SLOPE STAKE LINE
- - - CUT SLOPE STAKE LINE
- ▲ SILT FENCE
- ▨ Conc Pavt, Misc, Nonreinf, 10 inch



| REV. NO. | DESCRIPTION | DATE | BY | APP'D |
|----------|-------------|------|----|-------|
|          |             |      |    |       |
|          |             |      |    |       |
|          |             |      |    |       |

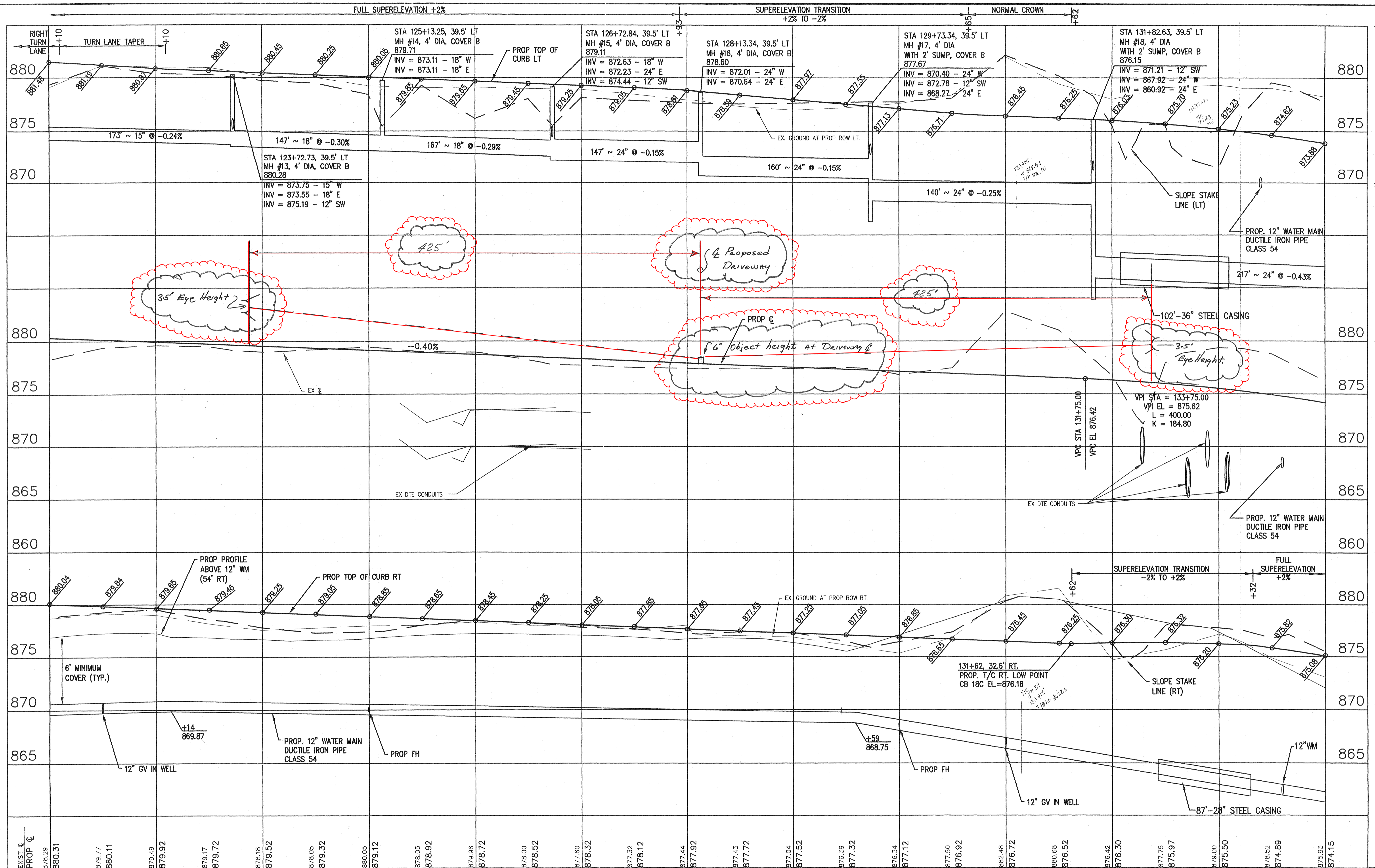
**ARCADIS FPS**  
 ARCADIS FPS, Inc.  
 Cadillac Tower  
 65 Cadillac Square, Suite 2719  
 Detroit, Michigan 48226  
 Tel: 313-965-8436 Fax: 313-965-8907  
 www.arcadis-us.com

SCALE  
 1" = 40'  
 DESIGNED BY  
 PKJ  
 DRAWN BY  
 PKJ  
 CHECKED BY  
 PJB

PLAN SHEET  
 STA 122+00 TO STA 134+00  
**ADAMS ROAD  
 RELOCATION  
 ROCHESTER HILLS, MI**

|                                |
|--------------------------------|
| CAD NUMBER<br>PLAN3            |
| PROJECT NUMBER<br>ROHO102001A1 |
| CONTRACT                       |
| DATE<br>04/21/06               |
| 26 OF 99                       |





EXIST. @ PROP. @ 122+00 878.29 880.31 879.77 880.11 879.49 879.92 879.17 879.72 878.18 879.52 878.05 879.32 880.05 879.12 878.05 878.92 879.96 878.72 878.00 878.52 877.60 878.32 877.32 878.12 877.44 877.92 877.43 877.72 877.04 877.52 876.39 877.32 876.34 877.12 877.50 876.92 882.48 876.72 880.68 876.52 876.42 876.30 877.75 875.97 879.00 875.50 878.52 874.89 875.93 874.15



| REV. NO. | DESCRIPTION | DATE | BY | APP'D |
|----------|-------------|------|----|-------|
|          |             |      |    |       |
|          |             |      |    |       |

**ARCADIS FPS**  
 ARCADIS FPS, Inc.  
 Cadillac Tower  
 65 Cadillac Square, Suite 2719  
 Detroit, Michigan 48226  
 Tel: 313-965-8436 Fax: 313-965-8907  
 www.arcadis-us.com

SCALE  
 HORIZ. 1:40  
 VERT. 1:4  
 DESIGNED BY  
 PKJ  
 DRAWN BY  
 PKJ  
 CHECKED BY  
 PJB

STA 122+00 TO STA 134+00  
**ADAMS ROAD RELOCATION**  
 ROCHESTER HILLS, MI

CAD NUMBER  
 PROF3  
 PROJECT NUMBER  
 ROH0102001A1  
 CONTRACT  
 DATE  
 04/21/06  
 27 OF 99



