

SYMBOLS

- 2 X 1.25" HDPE SDR-11 INNERDUCTS / TRACER WIRE
- 0+00 STATION MARKER
- STORAGE LOOP
- PROPOSED ANCHOR/GUY
- ⊕ BOND TO GROUND
- ⊥ GROUNDING
- ⊞ Existing Handhole
- ⊞ Proposed Handhole
- ⊞ Existing Manhole
- ⊞ Proposed Manhole
- ~ STREAM/RIVER
- - - CITY/TWP LINE
- - - ROAD C/L
- ▬ R/R TRACKS
- - - R/W LINE
- - - FENCE
- ▬ NEW AERIAL CABLE
- ▬ NEW BURIED CABLE
- ▬ WATER LINE
- ▬ GAS LINE
- ▬ POWER LINE
- ▬ SAN. SEWER
- ▬ STORM SEWER
- ⊞ Proposed Splice
- ⊞ Existing Splice
- ⊞ WATER VALVE/METER
- ⊞ GAS VALVE
- ⊞ HOUSE/BUILDING
- ⊞ Existing Power Pole
- ⊞ Foreign Pole (Tel)
- ⊞ Transmission Pole

CAUTION
FOREIGN UTILITY LOCATION ARE APPROXIMATE. CONTACT THE LOCAL ONE CALL AGENCY 72 HOURS PRIOR TO CONSTRUCTION FOR EXACT UTILITY LOCATIONS AT:

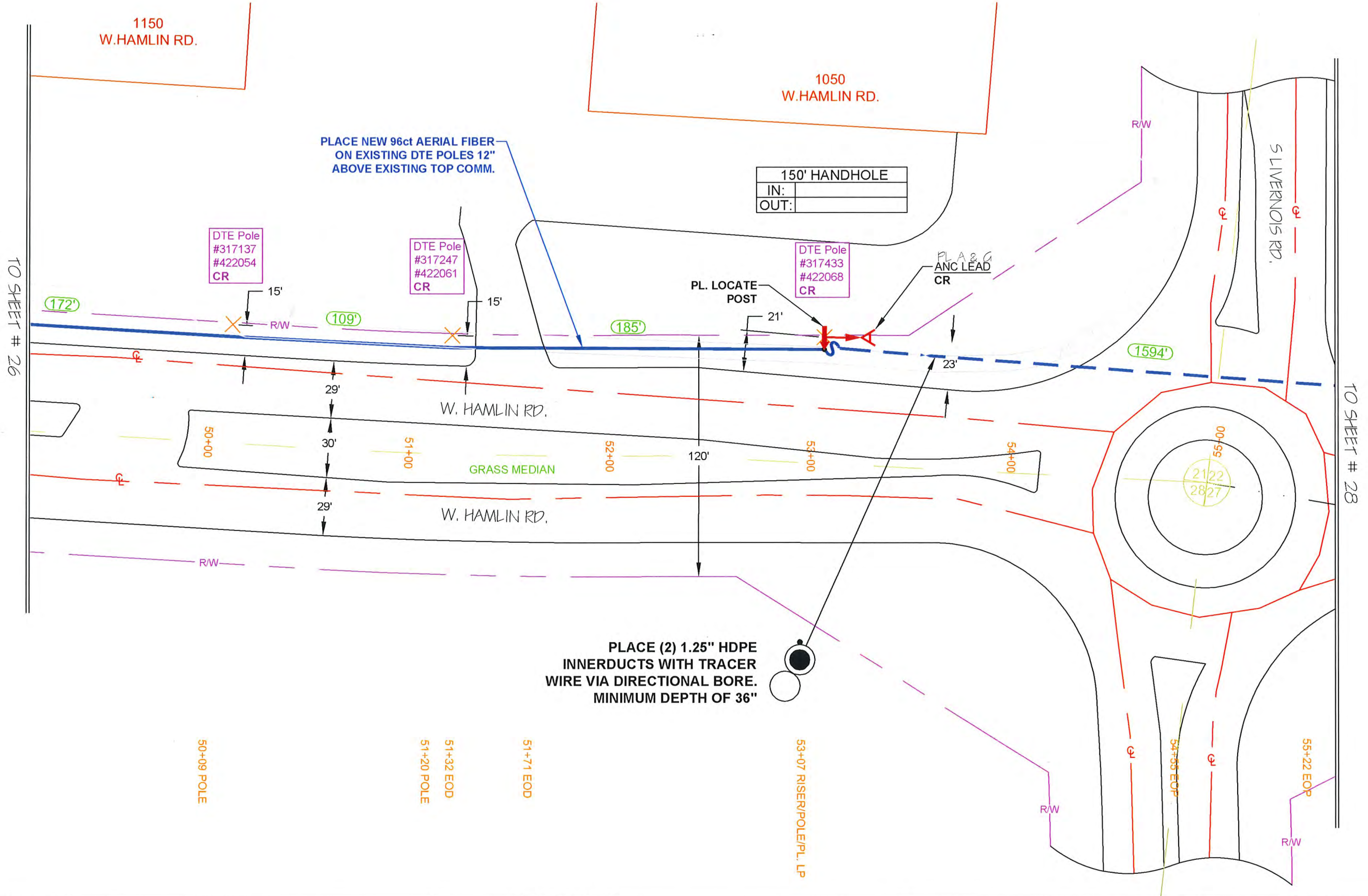
MISS DIG
1-800-482-7171

REVISIONS			
REV. #	DESCRIPTION	BY	DATE

CABLE AND INNERDUCT DESCRIPTION
CABLE FIBER COUNT: 96 ct. FOC
INNERDUCT: PL. (2) 1.25" SDR-11 HDPE W/TRACER WIRE

ARNOLD TRACHT DDS & DANIEL BRISKIE DDS, PC
1814 S. ROCHESTER RD.
ROCHESTER HILLS, MI

DRAWN BY : RAMTCH	DATE: 07/05/18
AS-BUILTS BY :	DATE:
ENGINEERED BY: RA	DRAWING SCALE: 1" = 50'
JOB NUMBER: 0012	
DRAWING NUMBER : 27 OF 38	

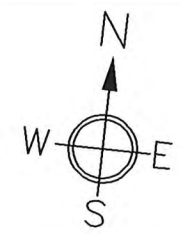


NOTES:

PROPRIETARY INFORMATION NOT FOR DISCLOSURE
This set of plans contains confidential or proprietary information, and the recipient must not disclose, copy, re-create, or distribute the plans or the information contained therein, either directly or indirectly, to other entities or individuals without written or express permission from Clear Rate Communications.

NOTE:
UTILITY LOCATIONS ARE APPROXIMATE ONLY. ALL UTILITIES MUST BE LOCATED PRIOR TO ANY EXCAVATION ACTIVITIES.

PLEASE CONTACT: MISSDIG 1-800-482-7171
72 HRS. PRIOR TO EXCAVATION



SYMBOLS

- 2 X 1.25" HDPE SDR-11 INNERDUCTS / TRACER WIRE
 - 0+00 STATION MARKER
 - STORAGE LOOP
 - PROPOSED ANCHOR/GUY
 - BOND TO GROUND
 - GROUNDING
 - Existing Handhole
 - Proposed Handhole
 - Existing Manhole
 - Proposed Manhole
 - Proposed Splice
 - Existing Splice
 - WATER VALVE/METER
 - GAS VALVE
 - HOUSE/BUILDING
 - Existing Power Pole
 - Foreign Pole (Tel)
 - Transmission Pole
- STREAM/RIVER
- CITY/TWP LINE
- ROAD C/L
- R/R TRACKS
- R/W LINE
- FENCE
- NEW AERIAL CABLE
- NEW BURIED CABLE
- WATER LINE
- GAS LINE
- POWER LINE
- SAN. SEWER
- STORM SEWER

CAUTION
FOREIGN UTILITY LOCATION ARE APPROXIMATE. CONTACT THE LOCAL ONE CALL AGENCY 72 HOURS PRIOR TO CONSTRUCTION FOR EXACT UTILITY LOCATIONS AT:

MISS DIG
1-800-482-7171

REVISIONS

REV. #	DESCRIPTION	BY	DATE
#		XXX	XX/XX/XX

CABLE AND INNERDUCT DESCRIPTION
CABLE FIBER COUNT: 96 ct. FOC
INNERDUCT: PL. (2) 1.25" SDR-11 HDPE W/TRACER WIRE

ARNOLD TRACHT DDS & DANIEL BRISKIE DDS, PC
1814 S. ROCHESTER RD.
ROCHESTER HILLS, MI

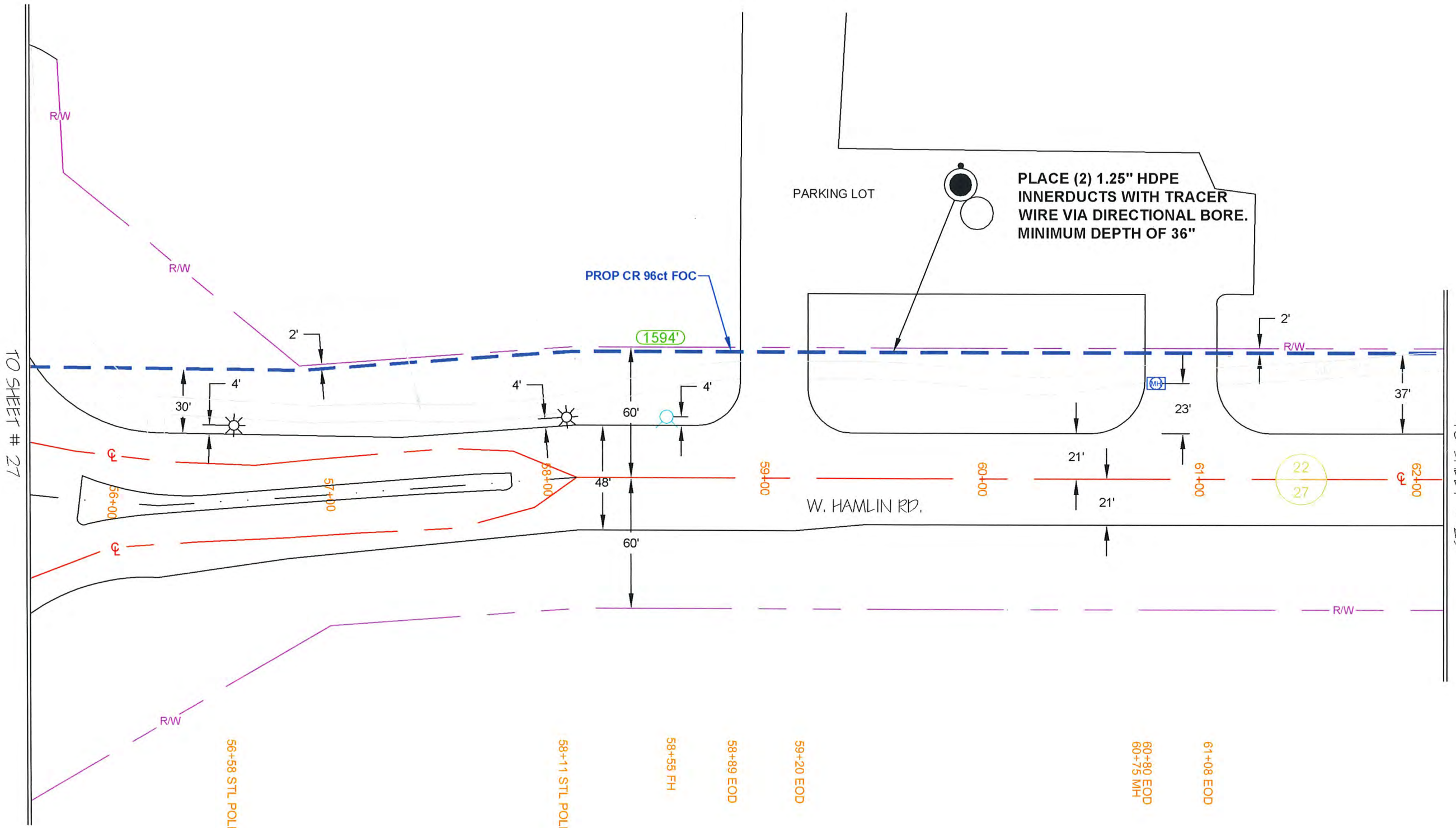
DRAWN BY : RANTACH DATE: 07/05/18

AS-BUILTS BY : DATE:

ENGINEERED BY: RA DRAWING SCALE: 1" = 50'

JOB NUMBER: 0012

DRAWING NUMBER : 28 OF 38



NOTES:

PROPRIETARY INFORMATION NOT FOR DISCLOSURE
This set of plans contains confidential or proprietary information, and the recipient must not disclose, copy, re-create, or distribute the plans or the information contained therein, either directly or indirectly, to other entities or individuals without written or express permission from Clear Rate Communications.

NOTE:
UTILITY LOCATIONS ARE APPROXIMATE ONLY. ALL UTILITIES MUST BE LOCATED PRIOR TO ANY EXCAVATION ACTIVITIES.

PLEASE CONTACT: MISSDIG 1-800-482-7171
72 HRS. PRIOR TO EXCAVATION



SYMBOLS

- 2 X 1.25" HDPE SDR-11 INNERDUCTS / TRACER WIRE
- 0+00 STATION MARKER
- STORAGE LOOP
- PROPOSED ANCHOR/GUY
- BOND TO GROUND
- GROUNDED
- Existing Handhole
- Proposed Handhole
- Existing Manhole
- Proposed Manhole
- Proposed Splice
- Existing Splice
- WATER VALVE/METER
- GAS VALVE
- HOUSE/BUILDING
- Existing Power Pole
- Foreign Pole (Tel)
- Transmission Pole
- STREAM/RIVER
- CITY/TWP LINE
- ROAD C/L
- R/R TRACKS
- R/W LINE
- FENCE
- NEW AERIAL CABLE
- NEW BURIED CABLE
- WATER LINE
- GAS LINE
- POWER LINE
- SAN. SEWER
- STORM SEWER

CAUTION
FOREIGN UTILITY LOCATION ARE APPROXIMATE. CONTACT THE LOCAL ONE CALL AGENCY 72 HOURS PRIOR TO CONSTRUCTION FOR EXACT UTILITY LOCATIONS AT:

MISS DIG
1-800-482-7171

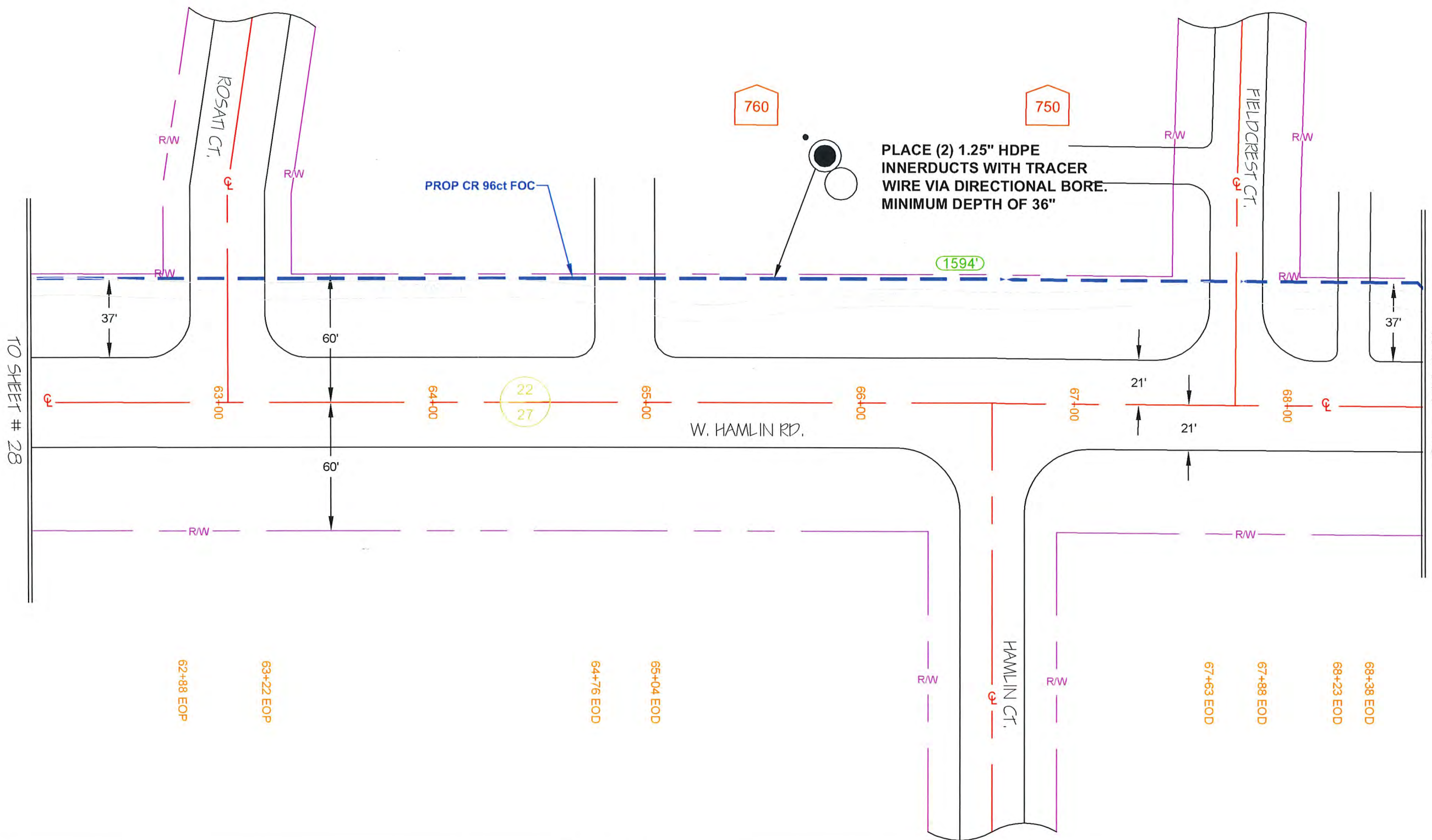
REVISIONS

REV. #	DESCRIPTION	BY	DATE
1		XXX	XX/XX/XX

CABLE AND INNERDUCT DESCRIPTION
CABLE FIBER COUNT: 96 ct. FOC
INNERDUCT: PL. (2) 1.25" SDR-11 HDPE W/TRACER WIRE

ARNOLD TRACHT DDS & DANIEL BRISKIE DDS, PC
1814 S. ROCHESTER RD.
ROCHESTER HILLS, MI

DRAWN BY: RAMTUCH	DATE: 07/05/18
AS-BUILTS BY:	DATE:
ENGINEERED BY: RA	DRAWING SCALE: 1" = 50'
JOB NUMBER: 0012	
DRAWING NUMBER: 29 OF 38	

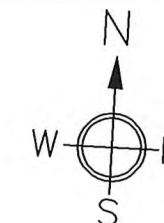


NOTES:

PROPRIETARY INFORMATION NOT FOR DISCLOSURE
This set of plans contains confidential or proprietary information, and the recipient must not disclose, copy, re-create, or distribute the plans or the information contained therein, either directly or indirectly, to other entities or individuals without written or express permission from Clear Rate Communications.

NOTE:
UTILITY LOCATIONS ARE APPROXIMATE ONLY. ALL UTILITIES MUST BE LOCATED PRIOR TO ANY EXCAVATION ACTIVITIES.

PLEASE CONTACT: MISSDIG 1-800-482-7171
72 HRS. PRIOR TO EXCAVATION



SYMBOLS

- 2 X 1.25" HDPE SDR-11 INNERDUCTS / TRACER WIRE
- 0+00 STATION MARKER
- STORAGE LOOP
- PROPOSED ANCHOR/GUY
- BOND TO GROUND
- GROUND
- Existing Handhole
- Proposed Handhole
- Existing Manhole
- Proposed Manhole
- STREAM/RIVER
- CITY/TWP LINE
- ROAD C/L
- R/R TRACKS
- R/W LINE
- FENCE
- NEW AERIAL CABLE
- NEW BURIED CABLE
- WATER LINE
- GAS LINE
- POWER LINE
- SAN. SEWER
- STORM SEWER
- Proposed Splice
- Existing Splice
- WATER VALVE/METER
- GAS VALVE
- HOUSE/BUILDING
- Existing Power Pole
- Foreign Pole (Tel)
- Transmission Pole

CAUTION
FOREIGN UTILITY LOCATION ARE APPROXIMATE. CONTACT THE LOCAL ONE CALL AGENCY 72 HOURS PRIOR TO CONSTRUCTION FOR EXACT UTILITY LOCATIONS AT:

MISS DIG
1-800-482-7171

REVISIONS

REV. #	DESCRIPTION	BY	DATE
		XXX	XX/XX/XX

CABLE AND INNERDUCT DESCRIPTION

CABLE FIBER COUNT: 96 ct. FOC
INNERDUCT: PL. (2) 1.25" SDR-11 HDPE W/TRACER WIRE

ARNOLD TRACHT DDS & DANIEL BRISKIE DDS, PC
1814 S. ROCHESTER RD.
ROCHESTER HILLS, MI

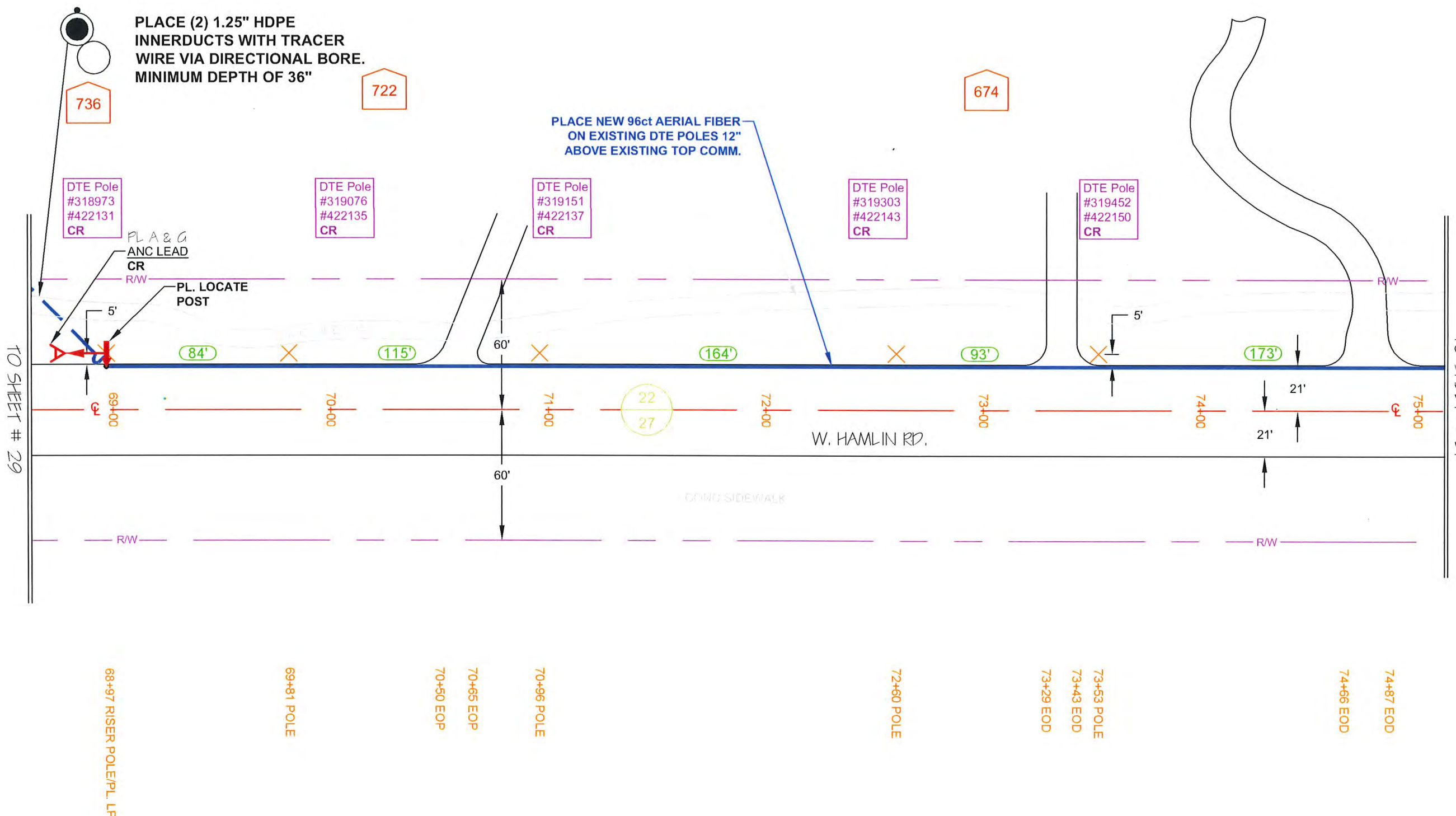
DRAWN BY : RAMTACH DATE: 07/05/18

AS-BUILTS BY : DATE:

ENGINEERED BY: RA DRAWING SCALE: 1" = 50'

JOB NUMBER: 0012

DRAWING NUMBER : 30 OF 38

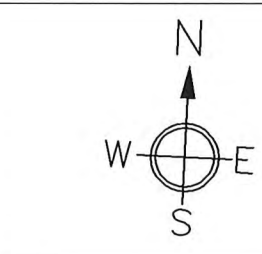


NOTES:

PROPRIETARY INFORMATION NOT FOR DISCLOSURE
This set of plans contains confidential or proprietary information, and the recipient must not disclose, copy, re-create, or distribute the plans or the information contained therein, either directly or indirectly, to other entities or individuals without written or express permission from Clear Rate Communications.

NOTE:
UTILITY LOCATIONS ARE APPROXIMATE ONLY. ALL UTILITIES MUST BE LOCATED PRIOR TO ANY EXCAVATION ACTIVITIES.

PLEASE CONTACT: MISSDIG 1-800-482-7171 72 HRS. PRIOR TO EXCAVATION



SYMBOLS

- 2 X 1.25" HDPE SDR-11 INNERDUCTS / TRACER WIRE
- 0+00 STATION MARKER
- STORAGE LOOP
- PROPOSED ANCHOR/GUY
- BOND TO GROUND
- GROUND
- Existing Handhole
- Proposed Handhole
- Existing Manhole
- Proposed Manhole
- Proposed Splice
- Existing Splice
- WATER VALVE/METER
- GAS VALVE
- HOUSE/BUILDING
- Existing Power Pole
- Foreign Pole (Tel)
- Transmission Pole
- STREAM/RIVER
- CITY/TWP LINE
- ROAD C/L
- R/R TRACKS
- R/W LINE
- FENCE
- NEW AERIAL CABLE
- NEW BURIED CABLE
- WATER LINE
- GAS LINE
- POWER LINE
- SAN. SEWER
- STORM SEWER

CAUTION
FOREIGN UTILITY LOCATION ARE APPROXIMATE. CONTACT THE LOCAL ONE CALL AGENCY 72 HOURS PRIOR TO CONSTRUCTION FOR EXACT UTILITY LOCATIONS AT:

MISS DIG
1-800-482-7171

REVISIONS

REV. #	DESCRIPTION	BY	DATE
1		XXX	XX/XX/XX

CABLE AND INNERDUCT DESCRIPTION

CABLE FIBER COUNT: 96 ct. FOC

INNERDUCT:

ARNOLD TRACHT DDS & DANIEL BRISKIE DDS, PC
1814 S. ROCHESTER RD.
ROCHESTER HILLS, MI

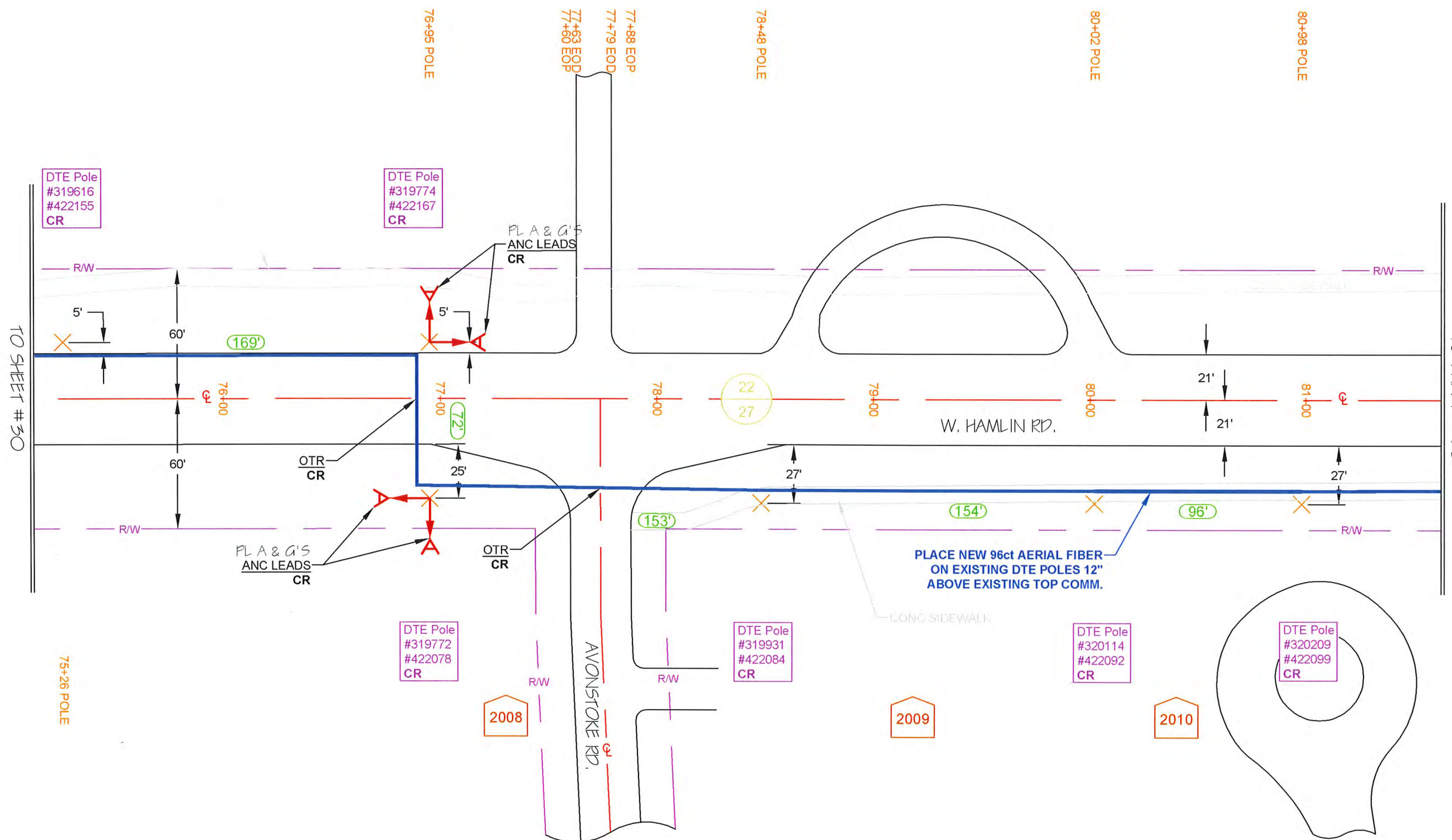
DRAWN BY : RAMTUCH DATE: 07/05/18

AS-BUILTS BY : DATE:

ENGINEERED BY: RA DRAWING SCALE: 1" = 50'

JOB NUMBER: 0012

DRAWING NUMBER : 31 OF 38



NOTES:

PROPRIETARY INFORMATION NOT FOR DISCLOSURE
This set of plans contains confidential or proprietary information, and the recipient must not disclose, copy, re-create, or distribute the plans or the information contained therein, either directly or indirectly, to other entities or individuals without written or express permission from Clear Rate Communications.

NOTE:
UTILITY LOCATIONS ARE APPROXIMATE ONLY. ALL UTILITIES MUST BE LOCATED PRIOR TO ANY EXCAVATION ACTIVITIES.

PLEASE CONTACT: MISSDIG 1-800-482-7171
72 HRS. PRIOR TO EXCAVATION



SYMBOLS

- 2 X 1.25" HDPE SDR-11 INNERDUCTS / TRACER WIRE
- 0+00 STATION MARKER
- STORAGE LOOP
- PROPOSED ANCHOR/GUY
- BOND TO GROUND
- GROUNDED
- Existing Handhole
- Proposed Handhole
- Existing Manhole
- Proposed Manhole
- Proposed Splice
- Existing Splice
- WATER VALVE/METER
- GAS VALVE
- HOUSE/BUILDING
- Existing Power Pole
- Foreign Pole (Tel)
- Transmission Pole
- STREAM/RIVER
- CITY/TWP LINE
- ROAD C/L
- R/R TRACKS
- R/W LINE
- FENCE
- NEW AERIAL CABLE
- NEW BURIED CABLE
- WATER LINE
- GAS LINE
- POWER LINE
- SAN. SEWER
- STORM SEWER

CAUTION
FOREIGN UTILITY LOCATION ARE APPROXIMATE. CONTACT THE LOCAL ONE CALL AGENCY 72 HOURS PRIOR TO CONSTRUCTION FOR EXACT UTILITY LOCATIONS AT:

MISS DIG
1-800-482-7171

REVISIONS

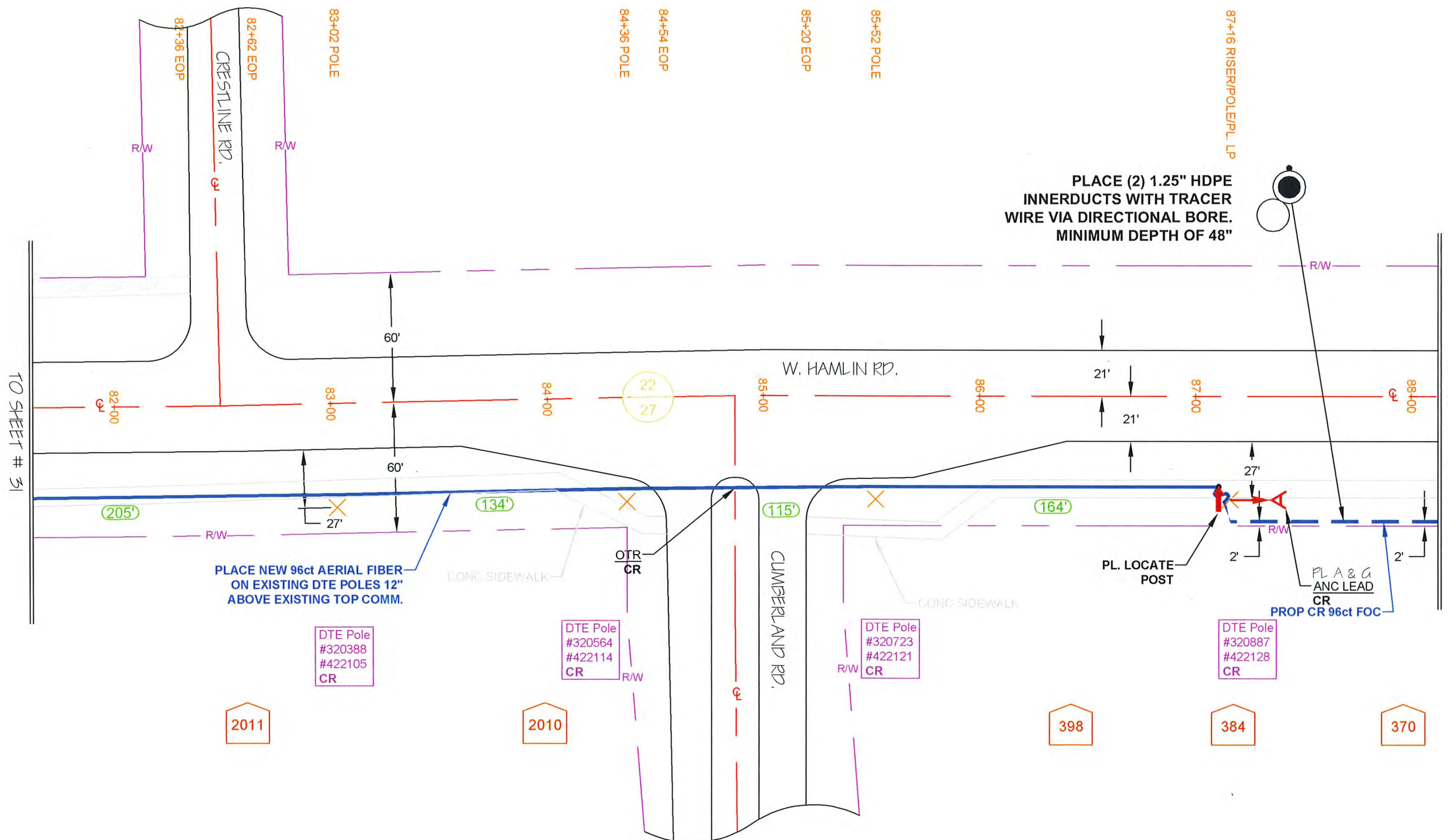
REV. #	DESCRIPTION	BY	DATE
#		XXX	XX/XX/XX

CABLE AND INNERDUCT DESCRIPTION

CABLE FIBER COUNT: 96 ct. FOC
INNERDUCT: PL. (2) 1.25" SDR-11 HDPE W/TRACER WIRE

ARNOLD TRACHT DDS & DANIEL BRISKIE DDS, PC
1814 S. ROCHESTER RD.
ROCHESTER HILLS, MI

DRAWN BY: RANTUCH	DATE: 07/05/18
AS-BUILTS BY:	DATE:
ENGINEERED BY: RA	DRAWING SCALE: 1" = 50'
JOB NUMBER: 0012	
DRAWING NUMBER: 32 OF 38	



NOTES:

PROPRIETARY INFORMATION NOT FOR DISCLOSURE
This set of plans contains confidential or proprietary information, and the recipient must not disclose, copy, re-create, or distribute the plans or the information contained therein, either directly or indirectly, to other entities or individuals without written or express permission from Clear Rate Communications.

NOTE:
UTILITY LOCATIONS ARE APPROXIMATE ONLY. ALL UTILITIES MUST BE LOCATED PRIOR TO ANY EXCAVATION ACTIVITIES.

PLEASE CONTACT: MISSDIG 1-800-482-7171 72 HRS. PRIOR TO EXCAVATION



COUNTY: OAKLAND TOWNSHIP: AVON

CITY: ROCHESTER HILLS SECTION: 27

TOWN: 3N RANGE: 11E

SYMBOLS

- 2 X 1.25" HDPE SDR-11 INNERDUCTS / TRACER WIRE
- 0+00 STATION MARKER
- STORAGE LOOP
- PROPOSED ANCHOR/GUY
- BOND TO GROUND
- GROUNDING
- Existing Handhole
- Proposed Handhole
- Existing Manhole
- Proposed Manhole
- Proposed Splice
- Existing Splice
- WATER VALVE/METER
- GAS VALVE
- HOUSE/BUILDING
- Existing Power Pole
- Foreign Pole (Tel)
- Transmission Pole
- STREAM/RIVER
- CITY/TWP LINE
- ROAD C/L
- R/R TRACKS
- R/W LINE
- FENCE
- NEW AERIAL CABLE
- NEW BURIED CABLE
- WATER LINE
- GAS LINE
- POWER LINE
- SAN. SEWER
- STORM SEWER

CAUTION

FOREIGN UTILITY LOCATION ARE APPROXIMATE. CONTACT THE LOCAL ONE CALL AGENCY 72 HOURS PRIOR TO CONSTRUCTION FOR EXACT UTILITY LOCATIONS AT:

MISS DIG
1-800-482-7171

REVISIONS

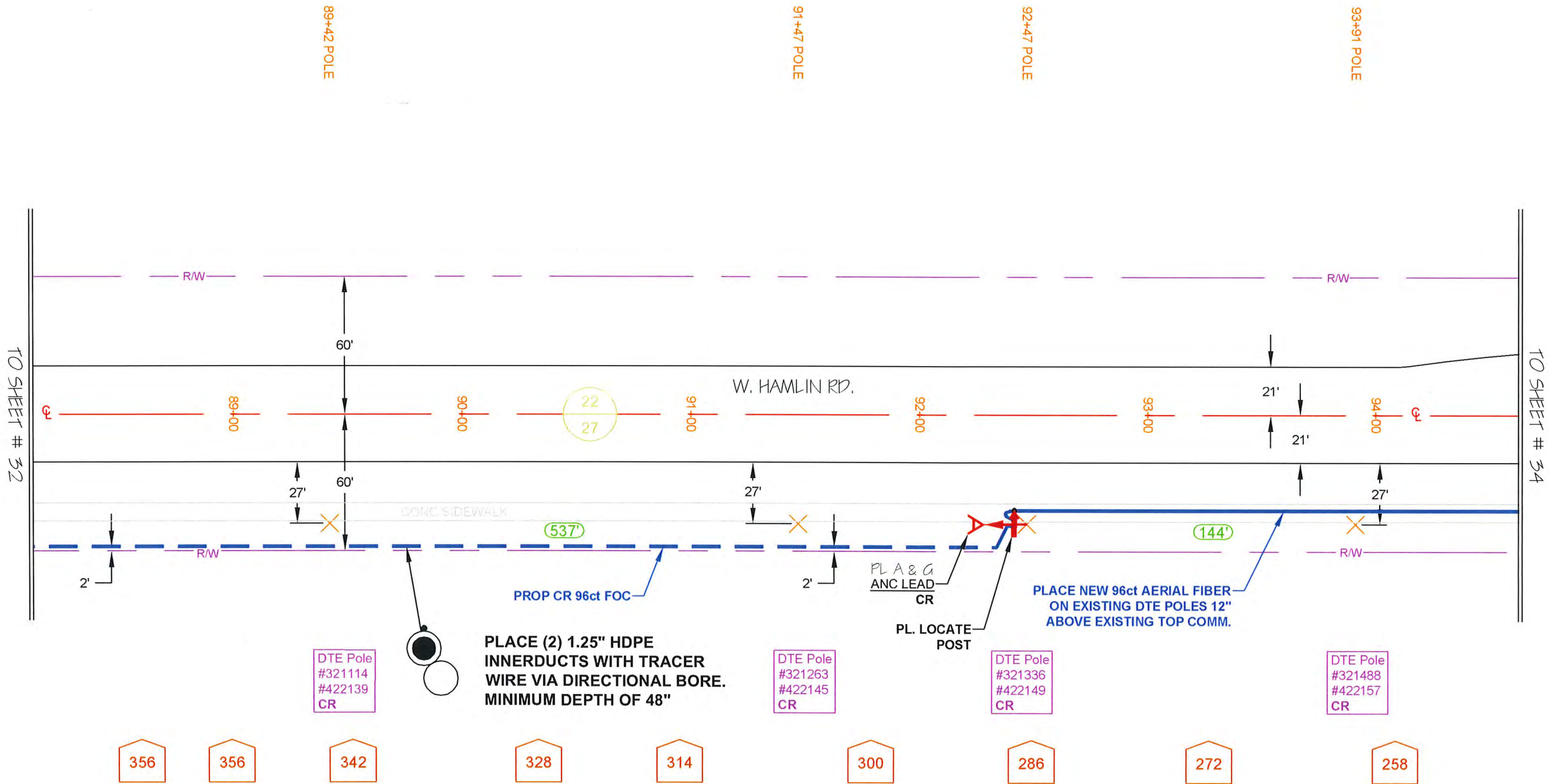
REV. #	DESCRIPTION	BY	DATE
		XXX	XX/XX/XX

CABLE AND INNERDUCT DESCRIPTION

CABLE FIBER COUNT: 96 ct. FOC
INNERDUCT: PL. (2) 1.25" SDR-11 HDPE W/TRACER WIRE

ARNOLD TRACHT DDS & DANIEL BRISKIE DDS, PC
1814 S. ROCHESTER RD.
ROCHESTER HILLS, MI

DRAWN BY : RAMTCH	DATE: 07/05/18
AS-BUILTS BY :	DATE:
ENGINEERED BY: RA	DRAWING SCALE: 1" = 50'
JOB NUMBER: 0012	
DRAWING NUMBER : 33 OF 38	



NOTES:

PROPRIETARY INFORMATION NOT FOR DISCLOSURE
This set of plans contains confidential or proprietary information, and the recipient must not disclose, copy, re-create, or distribute the plans or the information contained therein, either directly or indirectly, to other entities or individuals without written or express permission from Clear Rate Communications.

NOTE:
UTILITY LOCATIONS ARE APPROXIMATE ONLY. ALL UTILITIES MUST BE LOCATED PRIOR TO ANY EXCAVATION ACTIVITIES.

PLEASE CONTACT: MISSDIG 1-800-482-7171 72 HRS. PRIOR TO EXCAVATION



COUNTY: OAKLAND TOWNSHIP: AVON

CITY: ROCHESTER HILLS SECTION: 27

TOWN: 3N RANGE: 11E

SYMBOLS

- 2 X 1.25" HDPE SDR-11 INNERDUCTS / TRACER WIRE
- 0+00 STATION MARKER
- STORAGE LOOP
- PROPOSED ANCHOR/GUY
- BOND TO GROUND
- GROUNDING
- Existing Handhole
- Proposed Handhole
- Existing Manhole
- Proposed Manhole
- Proposed Splice
- Existing Splice
- WATER VALVE/METER
- GAS VALVE
- HOUSE/BUILDING
- Existing Power Pole
- Foreign Pole (Tel)
- Transmission Pole
- STREAM/RIVER
- CITY/TWP LINE
- ROAD C/L
- R/R TRACKS
- R/W LINE
- FENCE
- NEW AERIAL CABLE
- NEW BURIED CABLE
- WTR
- GAS LINE
- POWER LINE
- SAN. SEWER
- STORM SEWER

CAUTION
FOREIGN UTILITY LOCATION ARE APPROXIMATE. CONTACT THE LOCAL ONE CALL AGENCY 72 HOURS PRIOR TO CONSTRUCTION FOR EXACT UTILITY LOCATIONS AT:

MISS DIG
1-800-482-7171

REVISIONS

REV. #	DESCRIPTION	BY	DATE
#		XXX	XX/XX/XX

CABLE AND INNERDUCT DESCRIPTION

CABLE FIBER COUNT: 96 ct. FOC
INNERDUCT:

ARNOLD TRACHT DDS & DANIEL BRISKIE DDS, PC
1814 S. ROCHESTER RD.
ROCHESTER HILLS, MI

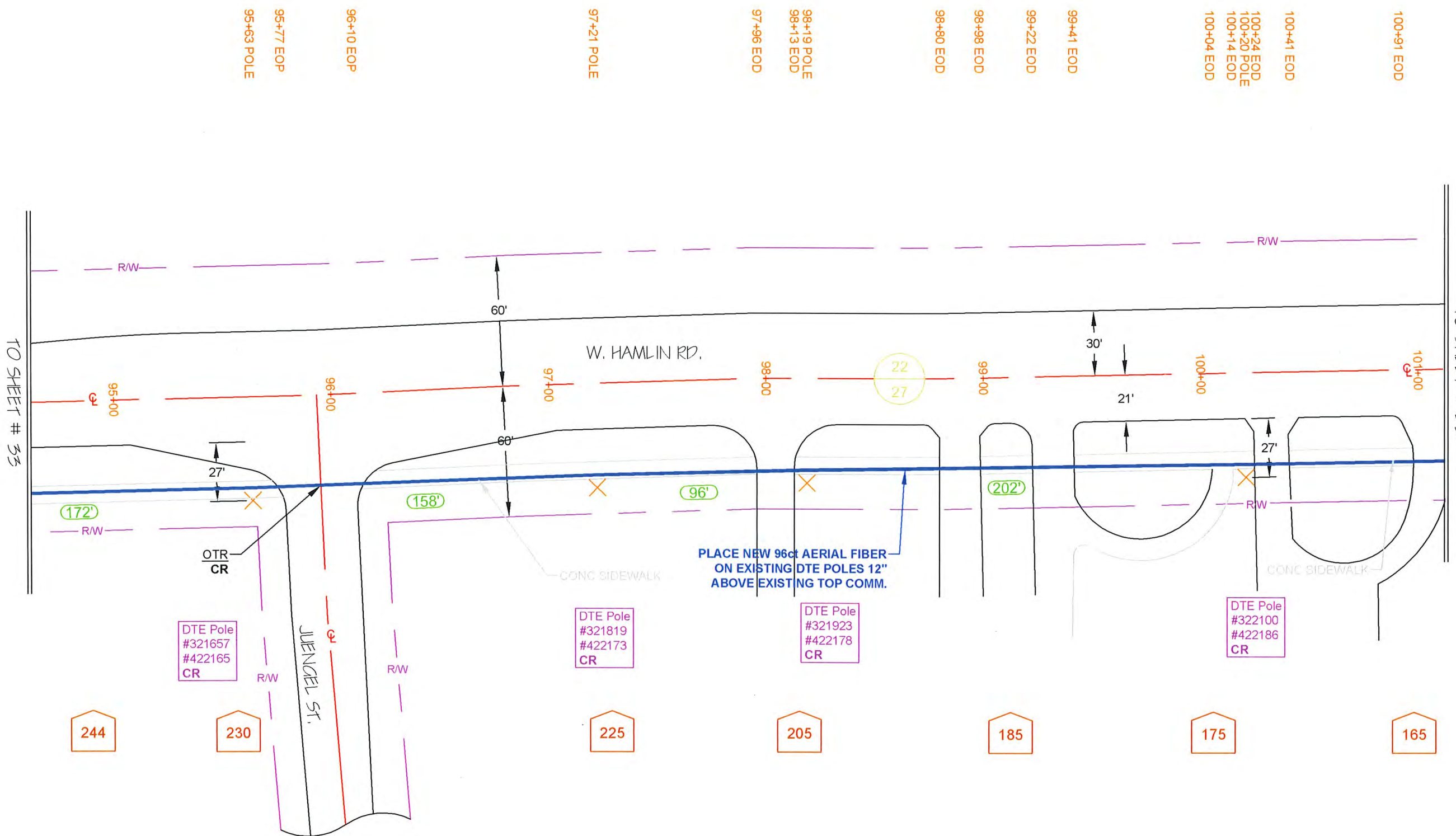
DRAWN BY: RAMTACH DATE: 07/05/18

AS-BUILTS BY: DATE:

ENGINEERED BY: RA DRAWING SCALE: 1" = 50'

JOB NUMBER: 0012

DRAWING NUMBER: 34 OF 38



NOTES:

PROPRIETARY INFORMATION NOT FOR DISCLOSURE
This set of plans contains confidential or proprietary information, and the recipient must not disclose, copy, re-create, or distribute the plans or the information contained therein, either directly or indirectly, to other entities or individuals without written or express permission from Clear Rate Communications.



SYMBOLS

- 2 X 1.25" HDPE SDR-11 INNERDUCTS / TRACER WIRE
- 0+00 STATION MARKER
- STORAGE LOOP
- PROPOSED ANCHOR/GUY
- BOND TO GROUND
- GROUNDING
- Existing Handhole
- Proposed Handhole
- Existing Manhole
- Proposed Manhole
- Proposed Splice
- Existing Splice
- WATER VALVE/METER
- GAS VALVE
- HOUSE/BUILDING
- Existing Power Pole
- Foreign Pole (Tel)
- Transmission Pole
- STREAM/RIVER
- CITY/TWP LINE
- ROAD C/L
- R/R TRACKS
- R/W LINE
- FENCE
- NEW AERIAL CABLE
- NEW BURIED CABLE
- WATER LINE
- GAS LINE
- POWER LINE
- SAN. SEWER
- STORM SEWER

CAUTION
FOREIGN UTILITY LOCATION ARE APPROXIMATE. CONTACT THE LOCAL ONE CALL AGENCY 72 HOURS PRIOR TO CONSTRUCTION FOR EXACT UTILITY LOCATIONS AT:

MISS DIG
1-800-482-7171

REVISIONS

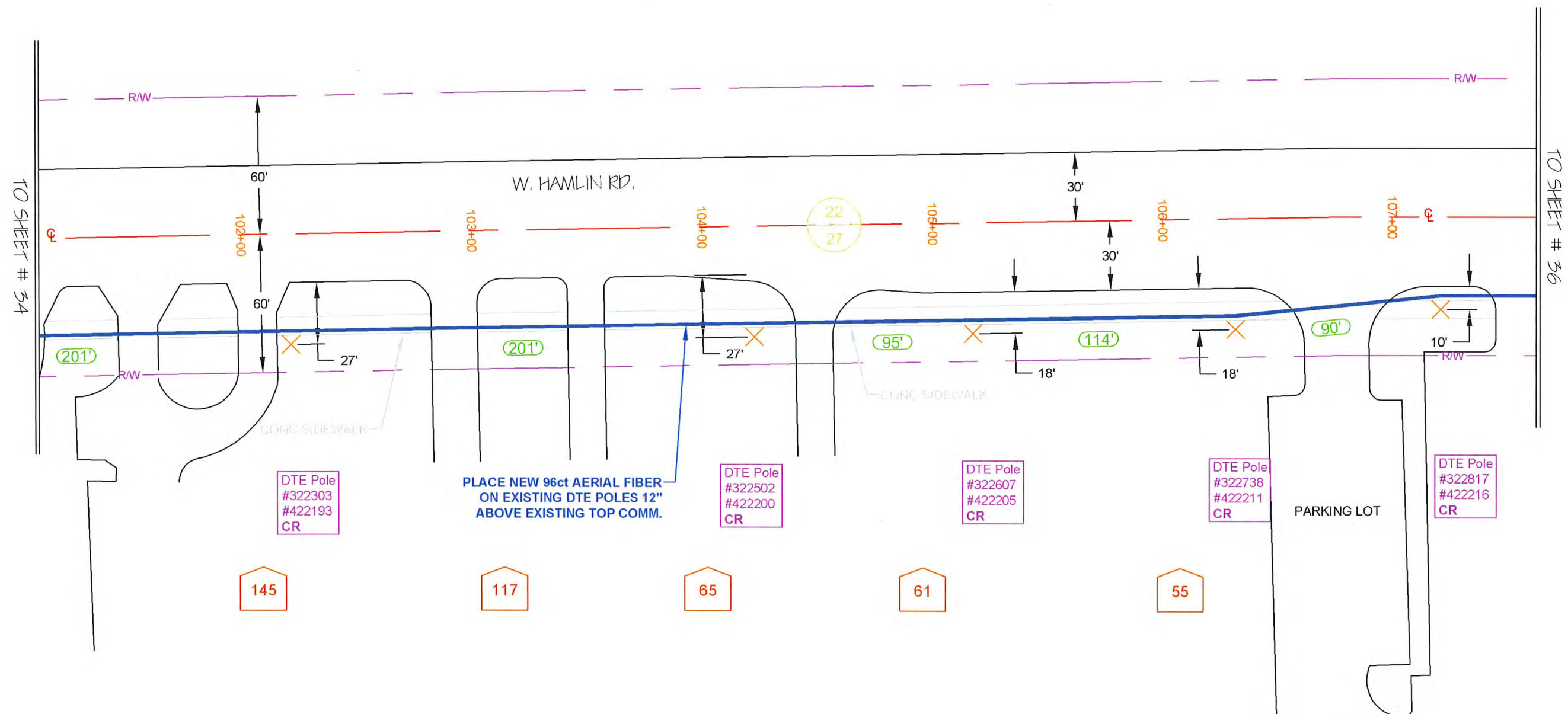
REV. #	DESCRIPTION	BY	DATE
#		XXX	XX/XX/XX

CABLE AND INNERDUCT DESCRIPTION
CABLE FIBER COUNT: 96 ct. FOC
INNERDUCT:

ARNOLD TRACHT DDS & DANIEL BRISKIE DDS, PC
1814 S. ROCHESTER RD.
ROCHESTER HILLS, MI

DRAWN BY : RAMTUCH	DATE: 07/05/18
AS-BUILTS BY :	DATE:
ENGINEERED BY: RA	DRAWING SCALE: 1" = 50'
JOB NUMBER: 0012	
DRAWING NUMBER : 35 OF 38	

101+14 EOD
101+46 EOD
101+63 EOD
101+98 EOD
102+21 POLE
102+15 EOD
102+82 EOD
103+02 EOD
103+41 EOD
103+57 EOD
104+22 POLE
104+40 EOD
104+56 EOD
105+17 POLE
106+31 POLE
106+61 EOD
106+90 EOD
107+21 POLE
107+45 EOD



DTE Pole
#322303
#422193
CR

PLACE NEW 96ct AERIAL FIBER
ON EXISTING DTE POLES 12"
ABOVE EXISTING TOP COMM.

DTE Pole
#322502
#422200
CR

DTE Pole
#322607
#422205
CR

DTE Pole
#322738
#422211
CR

DTE Pole
#322817
#422216
CR

NOTES:

PROPRIETARY INFORMATION NOT FOR DISCLOSURE
This set of plans contains confidential or proprietary information, and the recipient must not disclose, copy, re-create, or distribute the plans or the information contained therein, either directly or indirectly, to other entities or individuals without written or express permission from Clear Rate Communications.



COUNTY: OAKLAND TOWNSHIP: AVON

CITY: ROCHESTER HILLS SECTION: 27

TOWN: 3N

RANGE: 11E

SYMBOLS

- 2 X 1.25" HDPE SDR-11 INNERDUCTS / TRACER WIRE
- 0+00 STATION MARKER
- STORAGE LOOP
- PROPOSED ANCHOR/GUY
- BOND TO GROUND
- GROUNDING
- Existing Handhole
- Proposed Handhole
- Existing Manhole
- Proposed Manhole
- Proposed Splice
- Existing Splice
- WATER VALVE/METER
- GAS VALVE
- HOUSE/BUILDING
- Existing Power Pole
- Foreign Pole (Tel)
- Transmission Pole
- STREAM/RIVER
- CITY/TWP LINE
- ROAD C/L
- R/R TRACKS
- R/W LINE
- FENCE
- NEW AERIAL CABLE
- NEW BURIED CABLE
- WATER LINE
- GAS LINE
- POWER LINE
- SAN. SEWER
- STORM SEWER

CAUTION
FOREIGN UTILITY LOCATION ARE APPROXIMATE. CONTACT THE LOCAL ONE CALL AGENCY 72 HOURS PRIOR TO CONSTRUCTION FOR EXACT UTILITY LOCATIONS AT:

MISS DIG
1-800-482-7171

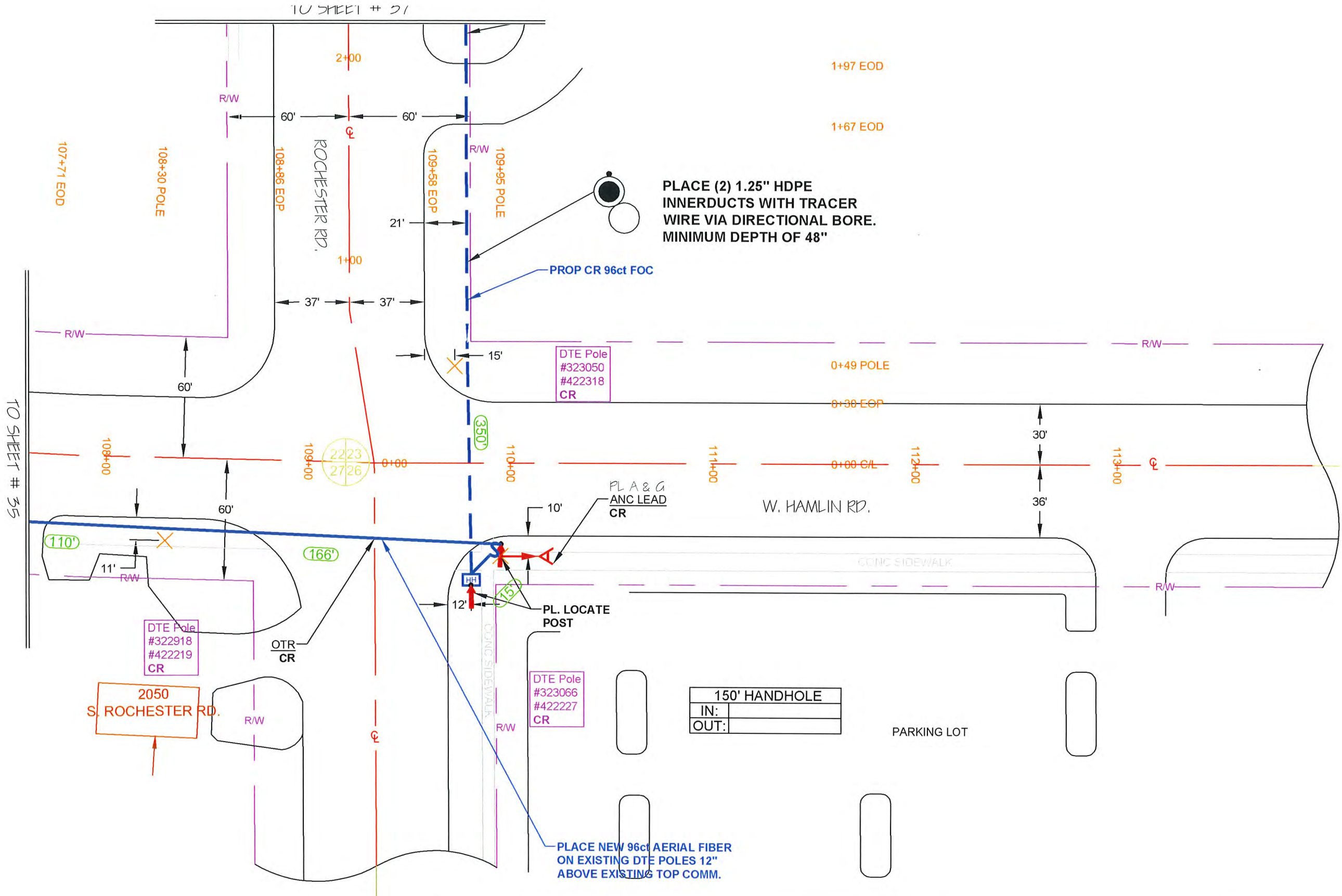
REVISIONS

REV. #	DESCRIPTION	BY	DATE

CABLE AND INNERDUCT DESCRIPTION
CABLE FIBER COUNT: 96 ct. FOC
INNERDUCT: PL. (2) 1.25" SDR-11 HDPE W/TRACER WIRE

ARNOLD TRACHT DDS & DANIEL BRISKIE DDS, PC
1814 S. ROCHESTER RD.
ROCHESTER HILLS, MI

DRAWN BY: RAMT@CH	DATE: 07/05/18
AS-BUILTS BY:	DATE:
ENGINEERED BY: RA	DRAWING SCALE: 1" = 50'
JOB NUMBER: 0012	
DRAWING NUMBER: 36 OF 38	



PLACE (2) 1.25" HDPE INNERDUCTS WITH TRACER WIRE VIA DIRECTIONAL BORE. MINIMUM DEPTH OF 48"

PROP CR 96ct FOC

DTE Pole
#323050
#422318
CR

PL A & G
ANC LEAD
CR

PL. LOCATE
POST

DTE Pole
#323066
#422227
CR

PLACE NEW 96ct AERIAL FIBER ON EXISTING DTE POLES 12" ABOVE EXISTING TOP COMM.

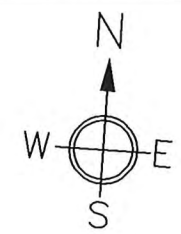
150' HANDHOLE	
IN:	
OUT:	

NOTES:

PROPRIETARY INFORMATION NOT FOR DISCLOSURE
This set of plans contains confidential or proprietary information, and the recipient must not disclose, copy, re-create, or distribute the plans or the information contained therein, either directly or indirectly, to other entities or individuals without written or express permission from Clear Rate Communications.

NOTE:
UTILITY LOCATIONS ARE APPROXIMATE ONLY. ALL UTILITIES MUST BE LOCATED PRIOR TO ANY EXCAVATION ACTIVITIES.

PLEASE CONTACT: MISSDIG 1-800-482-7171
72 HRS. PRIOR TO EXCAVATION



COUNTY: OAKLAND TOWNSHIP: AVON

CITY: ROCHESTER HILLS SECTION: 27/26/23

TOWN: 3N RANGE: 11E

SYMBOLS

- 2 X 1.25" HDPE SDR-11 INNERDUCTS / TRACER WIRE
 - 0+00 STATION MARKER
 - STORAGE LOOP
 - PROPOSED ANCHOR/GUY
 - BOND TO GROUND
 - GROUND
 - Existing Handhole
 - Proposed Handhole
 - Existing Manhole
 - Proposed Manhole
 - Proposed Splice
 - Existing Splice
 - WATER VALVE/METER
 - GAS VALVE
 - HOUSE/BUILDING
 - Existing Power Pole
 - Foreign Pole (Tel)
 - Transmission Pole
- STREAM/RIVER
CITY/TWP LINE
ROAD C/L
R/R TRACKS
R/W LINE
FENCE
NEW AERIAL CABLE
NEW BURIED CABLE
WATER LINE
GAS LINE
POWER LINE
SAN. SEWER
STORM SEWER

CAUTION
FOREIGN UTILITY LOCATION ARE APPROXIMATE. CONTACT THE LOCAL ONE CALL AGENCY 72 HOURS PRIOR TO CONSTRUCTION FOR EXACT UTILITY LOCATIONS AT:

MISS DIG
1-800-482-7171

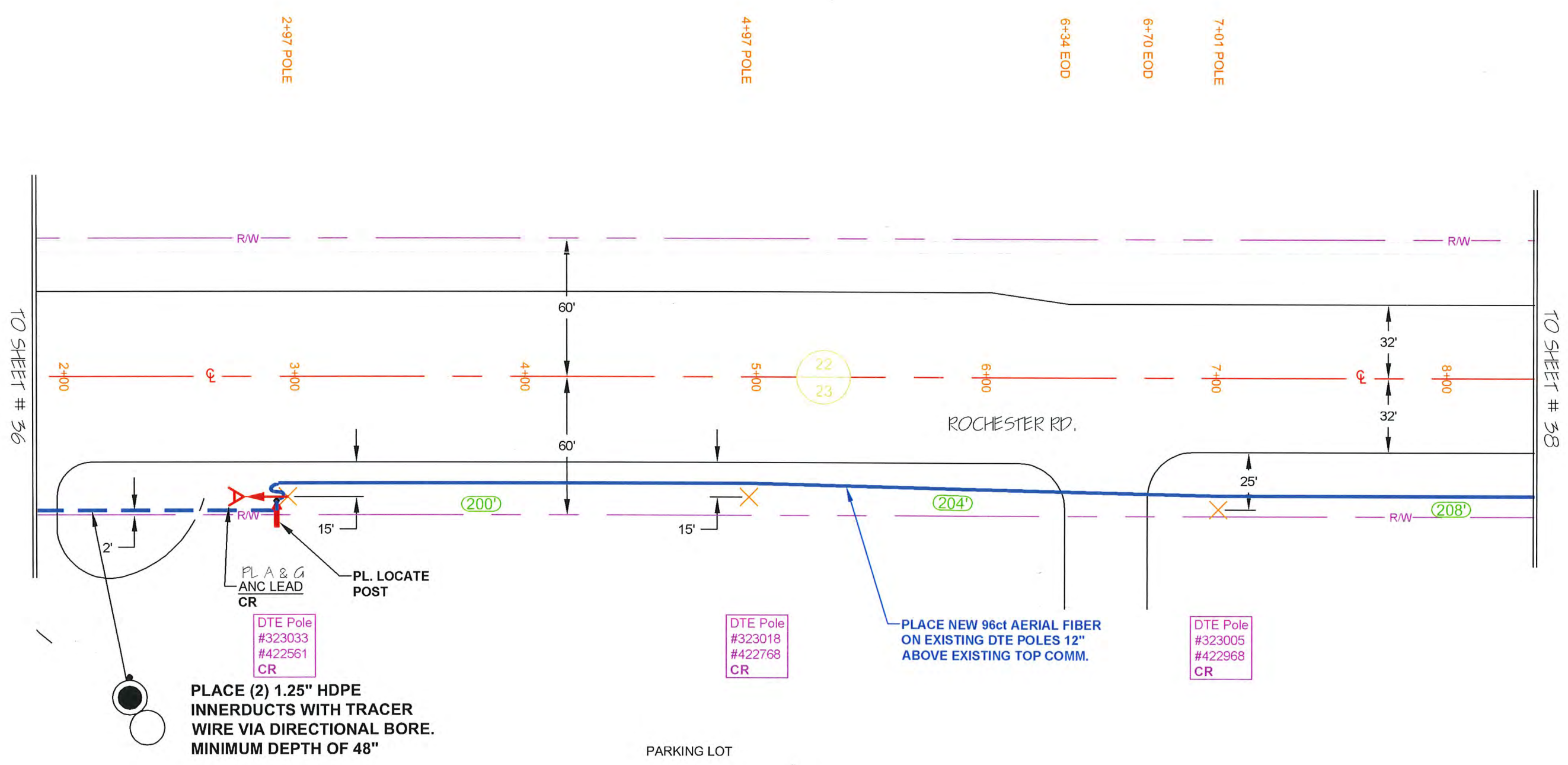
REVISIONS

REV. #	DESCRIPTION	BY	DATE
#		XXX	XX/XX/XX

CABLE AND INNERDUCT DESCRIPTION
CABLE FIBER COUNT: 96 ct. FOC
INNERDUCT: PL. (2) 1.25" SDR-11 HDPE W/TRACER WIRE

ARNOLD TRACHT DDS & DANIEL BRISKIE DDS, PC
1814 S. ROCHESTER RD.
ROCHESTER HILLS, MI

DRAWN BY: RAMTUCH	DATE: 07/05/18
AS-BUILTS BY:	DATE:
ENGINEERED BY: RA	DRAWING SCALE: 1" = 50'
JOB NUMBER: 0012	
DRAWING NUMBER: 37 OF 38	



PLACE (2) 1.25" HDPE INNERDUCTS WITH TRACER WIRE VIA DIRECTIONAL BORE. MINIMUM DEPTH OF 48"

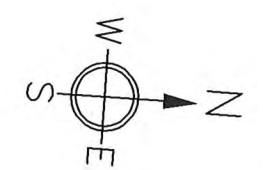
PLACE NEW 96ct AERIAL FIBER ON EXISTING DTE POLES 12" ABOVE EXISTING TOP COMM.

NOTES:

PROPRIETARY INFORMATION NOT FOR DISCLOSURE
This set of plans contains confidential or proprietary information, and the recipient must not disclose, copy, re-create, or distribute the plans or the information contained therein, either directly or indirectly, to other entities or individuals without written or express permission from Clear Rate Communications.

NOTE:
UTILITY LOCATIONS ARE APPROXIMATE ONLY. ALL UTILITIES MUST BE LOCATED PRIOR TO ANY EXCAVATION ACTIVITIES.

PLEASE CONTACT: MISSDIG 1-800-482-7171 72 HRS. PRIOR TO EXCAVATION



ARNOLD TRACHT DDS & DANIEL BRISKIE DDS, PC
1814 S. ROCHESTER RD.
ROCHESTER HILLS, MI

SYMBOLS

- 2 X 1.25" HDPE SDR-11 INNERDUCTS / TRACER WIRE
 - 0+00 STATION MARKER
 - STORAGE LOOP
 - PROPOSED ANCHOR/GUY
 - BOND TO GROUND
 - GROUNDING
 - Existing Handhole
 - Proposed Handhole
 - Existing Manhole
 - Proposed Manhole
 - Proposed Splice
 - Existing Splice
 - WATER VALVE/METER
 - GAS VALVE
 - HOUSE/BUILDING
 - Existing Power Pole
 - Foreign Pole (Tel)
 - Transmission Pole
- STREAM/RIVER
- CITY/TWP LINE
- ROAD C/L
- R/R TRACKS
- R/W LINE
- FENCE
- NEW AERIAL CABLE
- NEW BURIED CABLE
- WATER LINE
- GAS LINE
- POWER LINE
- SAN. SEWER
- STORM SEWER

CAUTION
FOREIGN UTILITY LOCATION ARE APPROXIMATE. CONTACT THE LOCAL ONE CALL AGENCY 72 HOURS PRIOR TO CONSTRUCTION FOR EXACT UTILITY LOCATIONS AT:

MISS DIG
1-800-482-7171

REVISIONS

REV. #	DESCRIPTION	BY	DATE
#		XXX	XX/XX/XX

CABLE AND INNERDUCT DESCRIPTION

CABLE FIBER COUNT: 96 ct. FOC
INNERDUCT:

ARNOLD TRACHT DDS & DANIEL BRISKIE DDS, PC
1814 S. ROCHESTER RD.
ROCHESTER HILLS, MI

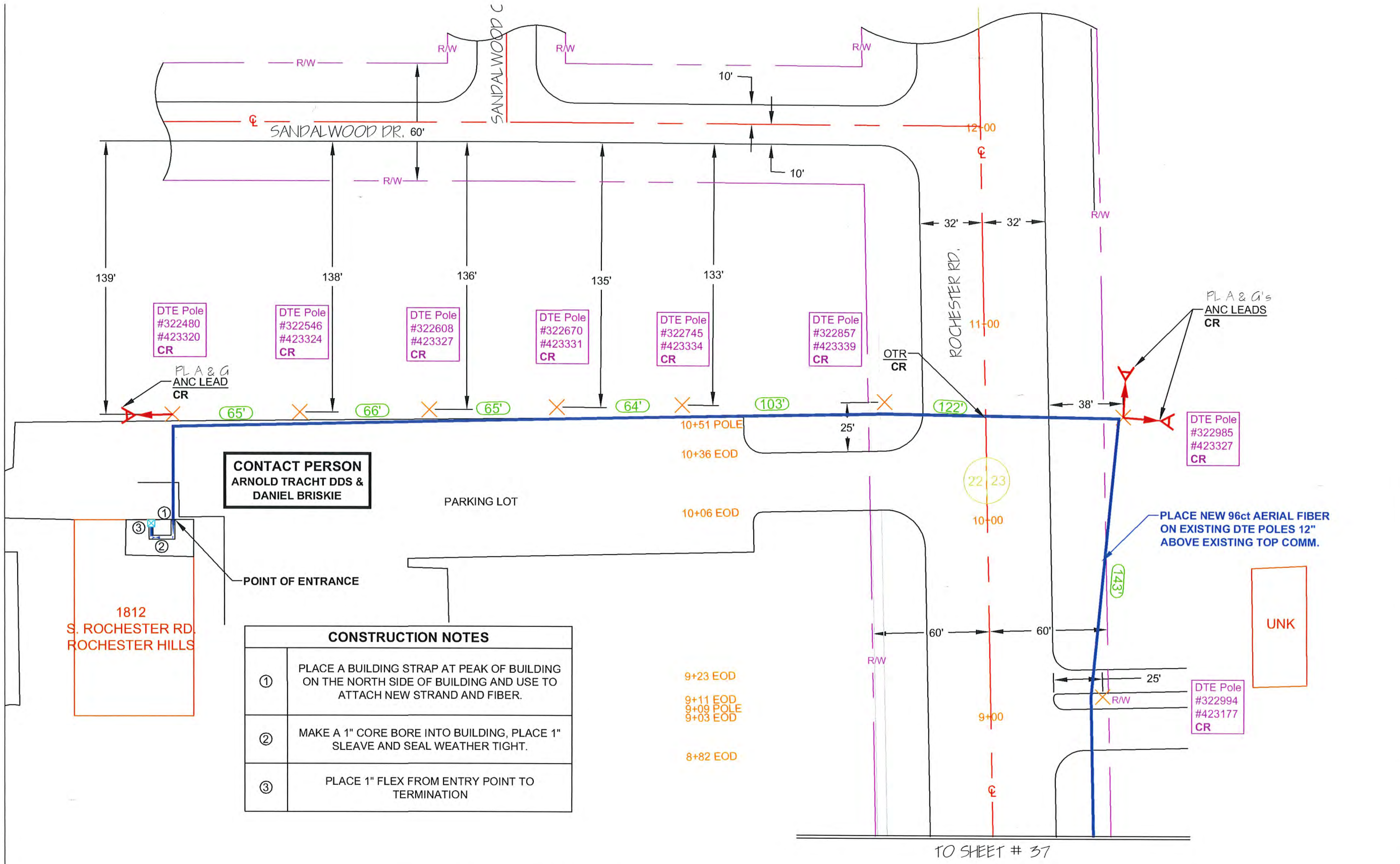
DRAWN BY : RAMTUCH DATE: 07/05/18

AS-BUILTS BY : DATE:

ENGINEERED BY: RA DRAWING SCALE: 1" = 50'

JOB NUMBER: 0012

DRAWING NUMBER : 38 OF 38



CONTACT PERSON
ARNOLD TRACHT DDS &
DANIEL BRISKIE

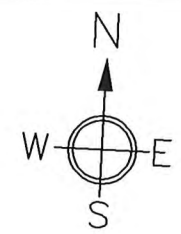
CONSTRUCTION NOTES	
①	PLACE A BUILDING STRAP AT PEAK OF BUILDING ON THE NORTH SIDE OF BUILDING AND USE TO ATTACH NEW STRAND AND FIBER.
②	MAKE A 1" CORE BORE INTO BUILDING, PLACE 1" SLEEVE AND SEAL WEATHER TIGHT.
③	PLACE 1" FLEX FROM ENTRY POINT TO TERMINATION

NOTES:

COUNTY: OAKLAND TOWNSHIP: AVON

PROPRIETARY INFORMATION NOT FOR DISCLOSURE
This set of plans contains confidential or proprietary information, and the recipient must not disclose, copy, re-create, or distribute the plans or the information contained therein, either directly or indirectly, to other entities or individuals without written or express permission from Clear Rate Communications.

NOTE:
UTILITY LOCATIONS ARE APPROXIMATE ONLY. ALL UTILITIES MUST BE LOCATED PRIOR TO ANY EXCAVATION ACTIVITIES.
PLEASE CONTACT: MISSDIG 1-800-482-7171 72 HRS. PRIOR TO EXCAVATION



TO SHEET # 37