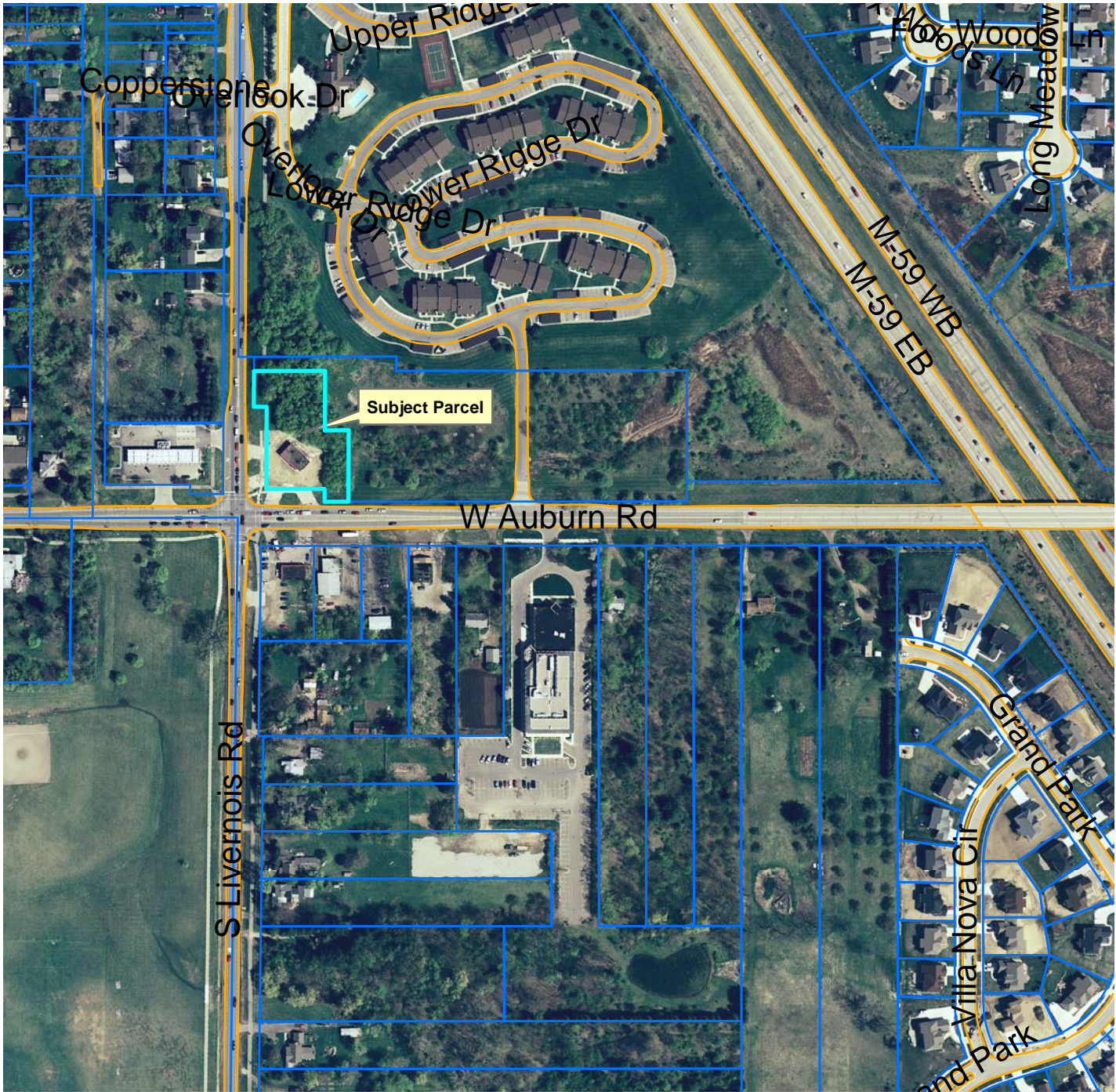


990 W. Auburn Rezoning Request

City File No. 95-015.3



Legend

- TaxParcel
- RoadEdge

Aerial photographs as of April 2005
Parcel lines were obtained on 04-01-08 from Oakland County
Although the information provided by this map is believed to
be reliable, its accuracy is not warranted in any way. The City of
Rochester Hills assumes no liability for any claims arising
from the use of this map.

08-08-07

1 inch equals 317 feet