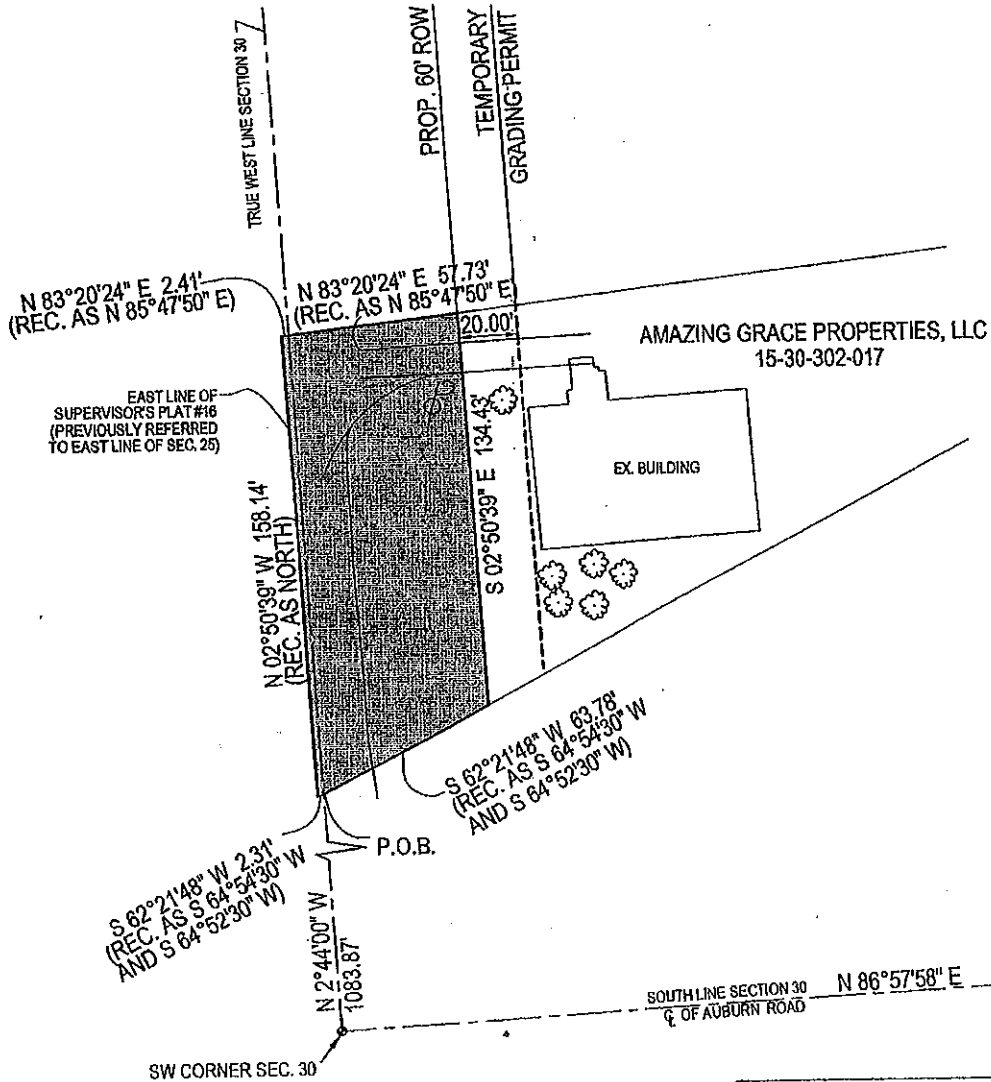
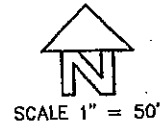


# SURVEY

## EXHIBIT 'A'

PART OF THE S 1/2 OF THE SW 1/4 SECTION 30, T.3 N., R.11 E.  
CITY OF ROCHESTER HILLS, OAKLAND COUNTY, MICHIGAN  
PART OF THE S 1/2 OF THE SE 1/4 SECTION 25, T.3 N., R.10 E.  
CITY OF AUBURN HILLS, OAKLAND COUNTY, MICHIGAN.



**LEGEND:**

- ROW ACQUISITION

<b>FINKBEINER PETTIS &amp; STROUT</b>	
CONSULTING ENGINEERS	
41441 ELEVEN HILE ROAD	
NOVI, MI, 48375	
(248) 305-7320      (248) 305-7324 FAX	
SURVEYED BY NOT A BOUNDARY SURVEY	DATE 10/21/01
DRAWN BY JUS	REVISED