



NISWANDER ENVIRONMENTAL, LLC
Finding Solutions in a Complex World

APPENDIX A

RIVERCREST PROPERTY

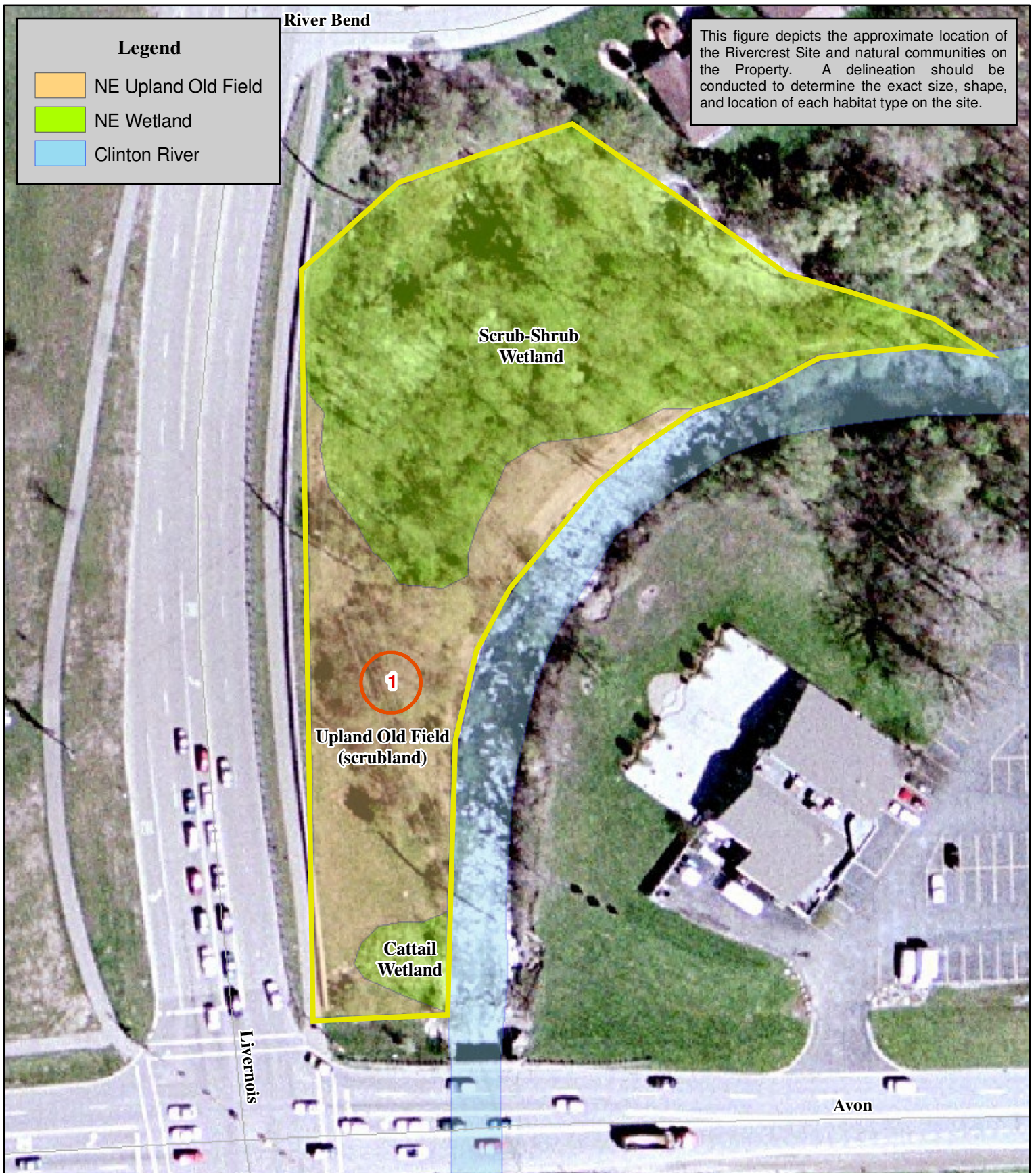



Figure 3. Natural Features Map - Rivercrest Site

NE 1210 Rochester Hills Greenspace Inventory
 1.74-acre Rivercrest Property
 Section 15 of Rochester Hills, Oakland, Co., MI
 Source: MiGDL, City of Rochester Hills GIS Dept.
 Habitat Assessment: May 19, 2010 and June 16, 2010
 Map Created: June 22, 2010

0 37.5 75 150 Feet




NISWANDER ENVIRONMENTAL, LLC
 10524 E. Grand River Ave., Suite 103, Brighton, MI 48116
 810.225.0539 Fax: 810.225.0653

NE 1210 Rochester Hills Greenspace Assessment and FQA

Site: Rivercrest

Habitat Type: Overall

Sampling Dates: May 19, 2010 and June 16, 2010

Total Species - 73

Mean C Value - 2.45

FQI Score - 20.93

Native - 52 (71%)

Adventive - 21 (29%)

Habitat
OF = Upland Old Field
W = Wetland

Species	Common Name	C Value	Wetness (status)	Habitat
<i>Acer negundo</i>	box elder	0	-2 (FACW-)	OF, W
<i>Acer saccharinum</i>	silver maple	2	-3 (FACW)	OF, W
<i>Agrimonia parviflora</i>	swamp agrimony	4	-1 (FAC+)	OF, W
<i>Alliaria petiolata</i>	garlic mustard	*	0 (FAC)	OF, W
<i>Apocynum cannabinum</i>	Indian hemp	3	0 (FAC)	OF, W
<i>Asclepias syriaca</i>	common milkweed	1	5 (UPL)	OF
<i>Aster lanceolatus</i>	Eastern lined aster	2	-3 (FACW)	OF, W
<i>Barbarea vulgaris</i>	winter cress	*	0 (FAC)	OF, W
<i>Carex lacustris</i>	lakebank sedge	6	-5 (OBL)	W
<i>Carex stricta</i>	tussock sedge	4	-5 (OBL)	W
<i>Carex vulpinoidea</i>	fox sedge	1	-5 (OBL)	W
<i>Chrysanthemum leucanthemum</i>	ox-eye daisy	*	5 (UPL)	OF
<i>Circaea alpina</i>	small enchanters nightshade	4	-3 (FACW)	W
<i>Cirsium arvense</i>	Canada thistle	*	3 (FACU)	OF
<i>Cornus amomum</i>	silky dogwood	2	-4 (FACW+)	W
<i>Cornus foemina</i>	gray dogwood	1	-2 (FACW-)	OF, W
<i>Coronilla varia</i>	crown vetch	*	5 (UPL)	OF
<i>Daucus carota</i>	carrot	*	5 (UPL)	OF
<i>Elaeagnus umbellata</i>	autumn olive	*	3 (FACU)	OF
<i>Eleocharis obtusa</i>	spikerush	3	-5 (OBL)	W
<i>Eleocharis smallii</i>	needle rush	5	-5 (OBL)	W
<i>Equisetum fluviatile</i>	water horsetail	7	-5 (OBL)	W
<i>Equisetum palustre</i>	marsh horsetail	10	-3 (FACW)	W
<i>Eupatorium maculatum</i>	joe-pye weed	4	-5 (OBL)	W
<i>Festuca arundinacea</i>	tall fescue	*	3 (FACU)	OF
<i>Fraxinus pennsylvanica</i>	green ash	2	-3 (FACW)	OF, W
<i>Geranium maculatum</i>	wild geranium	4	3 (FACU)	OF
<i>Geum aleppicum</i>	yellow avens	3	-1 (FAC+)	OF, W
<i>Hesperis matronalis</i>	dame's rocket	*	5 (UPL)	OF
<i>Impatiens capensis</i>	jewelweed	2	-3 (FACW)	W
<i>Juncus effusus</i>	soft rush	3	-5 (OBL)	W
<i>Juniperus virginiana</i>	red cedar	3	3 (FACU)	OF
<i>Ligustrum vulgare</i>	common privet	*	1 (FAC-)	OF, W
<i>Lonicera tartarica</i>	tartarian honeysuckle	*	3 (FACU)	OF
<i>Lysimachia nummularia</i>	moneywort	*	-4 (FACW+)	W
<i>Lythrum salicaria</i>	purple loosestrife	*	-5 (OBL)	W
<i>Malus coronaria</i>	crab apple	4	5 (UPL)	OF
<i>Oenothera villosa</i>	evening primrose	4	0 (FAC)	OF
<i>Onoclea sensibilis</i>	sensitive fern	2	-3 (FACW)	W

NE 1210 Rochester Hills Greenspace Assessment and FQA

Site: Rivercrest

Habitat

OF = Upland Old Field

W = Wetland

Species	Common Name	C Value	Wetness (status)	Habitat
<i>Parthenocissus quinquefolia</i>	Virginia creeper	5	1 (FAC-)	OF, W
<i>Phlox divaricata</i>	woodland phlox	5	3 (FACU)	OF
<i>Phragmites australis</i>	common reed	0	-4 (FACW+)	W
<i>Plantago lanceolata</i>	common plantain	*	0 (FAC)	OF
<i>Poa pratensis</i>	Kentucky bluegrass	*	-1 (FAC+)	OF
<i>Populus deltoides</i>	Eastern cottonwood	1	-1 (FAC+)	OF, W
<i>Prunus pensylvanica</i>	pin cherry	3	4 (FACU-)	OF
<i>Quercus rubra</i>	red oak	5	3 (FACU)	OF
<i>Ranunculus acris</i>	common buttercup	*	-2 (FACW-)	W
<i>Ranunculus hispidus</i>	swamp buttercup	5	0 (FAC)	W
<i>Rhamnus cathartica</i>	common buckthorn	*	3 (FACU)	OF, W
<i>Rhamnus frangula</i>	glossy buckthorn	*	-1 (FAC+)	OF, W
<i>Ribes triste</i>	swamp red currant	6	-5 (OBL)	W
<i>Rosa multiflora</i>	multiflora rose	*	3 (FACU)	OF
<i>Rumex crispus</i>	curly dock	*	-1 (FAC+)	W
<i>Salix exigua</i>	sandbar willow	1	-5 (OBL)	W
<i>Salix nigra</i>	black willow	5	-5 (OBL)	W
<i>Smilacina stellata</i>	starry false solomon's-seal	5	1 (FAC-)	OF
<i>Solidago gigantea</i>	late goldenrod	3	-3 (FACW)	W
<i>Solidago rugosa</i>	rough-stem goldenrod	3	-1 (FAC+)	OF
<i>Sparganium eurycarpum</i>	burreed	5	-5 (OBL)	W
<i>Symplocarpus foetidus</i>	skunk cabbage	6	-5 (OBL)	W
<i>Thalictrum dioicum</i>	early meadow rue	6	2 (FACU+)	OF
<i>Tilia americana</i>	basswood	5	3 (FACU)	OF
<i>Toxicodendron radicans</i>	poison ivy	2	-1 (FAC+)	OF, W
<i>Typha latifolia</i>	cattail	1	-5 (OBL)	W
<i>Ulmus americana</i>	American elm	1	-2 (FACW-)	OF, W
<i>Ulmus rubra</i>	slippery elm	2	0 (FAC)	OF, W
<i>Urtica dioica</i>	stinging nettle	1	-1 (FAC+)	OF, W
<i>Verbena hastata</i>	blue vervain	4	-4 (FACW+)	W
<i>Viburnum opulus americanum</i>	highbush cranberry	5	-3 (FACW)	W
<i>Viola cucullata</i>	marsh violet	5	-5 (OBL)	W
<i>Vitis riparia</i>	riverbank grape	3	-2 (FACW-)	W
<i>Xanthium strumarium</i>	cocklebur	*	0 (FAC)	OF

Photographic Log



Photo 1

The southern portion of the Rivercrest Property.



Photo 2

Portions of the upland old field are densely vegetated with woody non-native species.

Photographic Log



Photo 3

The southern portion of the scrub-shrub wetland located at the Rivercrest site.

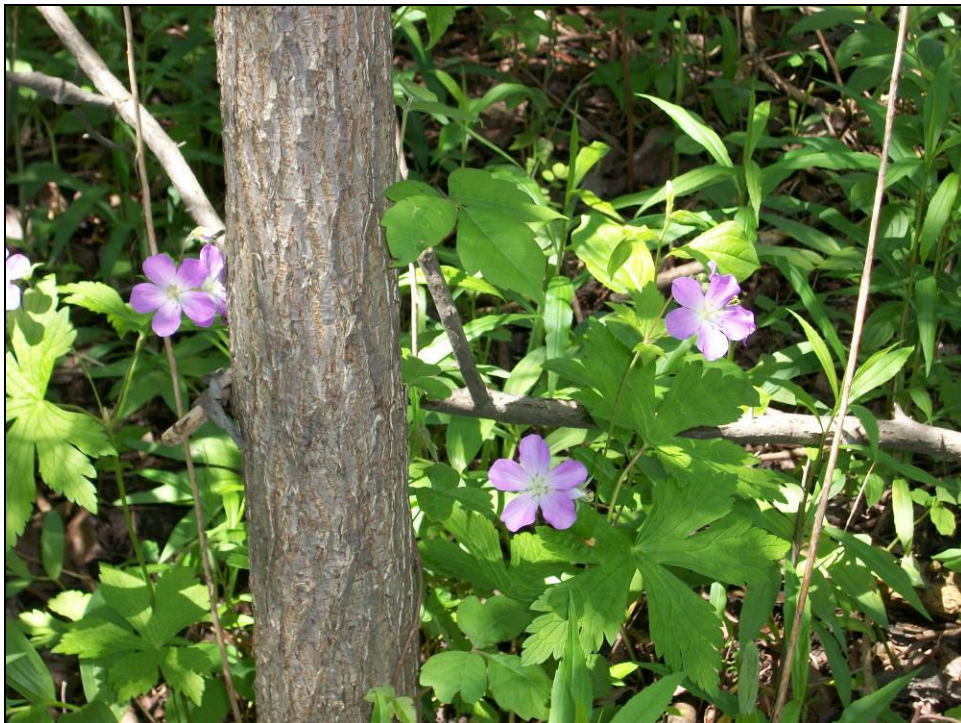


Photo 4

Wildflowers such as wild geranium (above) are abundant within the wooded upland portions of the Property.

Photographic Log



Photo 5

The scrub-shrub wetland is very diverse and features a variety of wetland sedges, grasses, and forbs.



Photo 6

Scrub-shrub wetland.

Photographic Log



Photo 7

Seasonal standing water offers essential breeding pools for amphibians.



Photo 8

Scrub-shrub wetland.

Photographic Log



Photo 9

Recent beaver activity was observed in the northern portion of the scrub-shrub wetland.



Photo 10

The Rivercrest Property provides a critical buffer to the adjacent Clinton River.