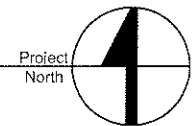


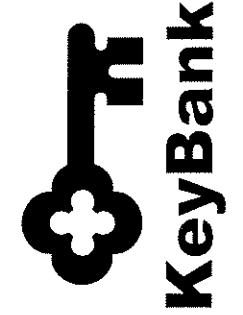
1 SITE PLAN  
1" = 30'-0"



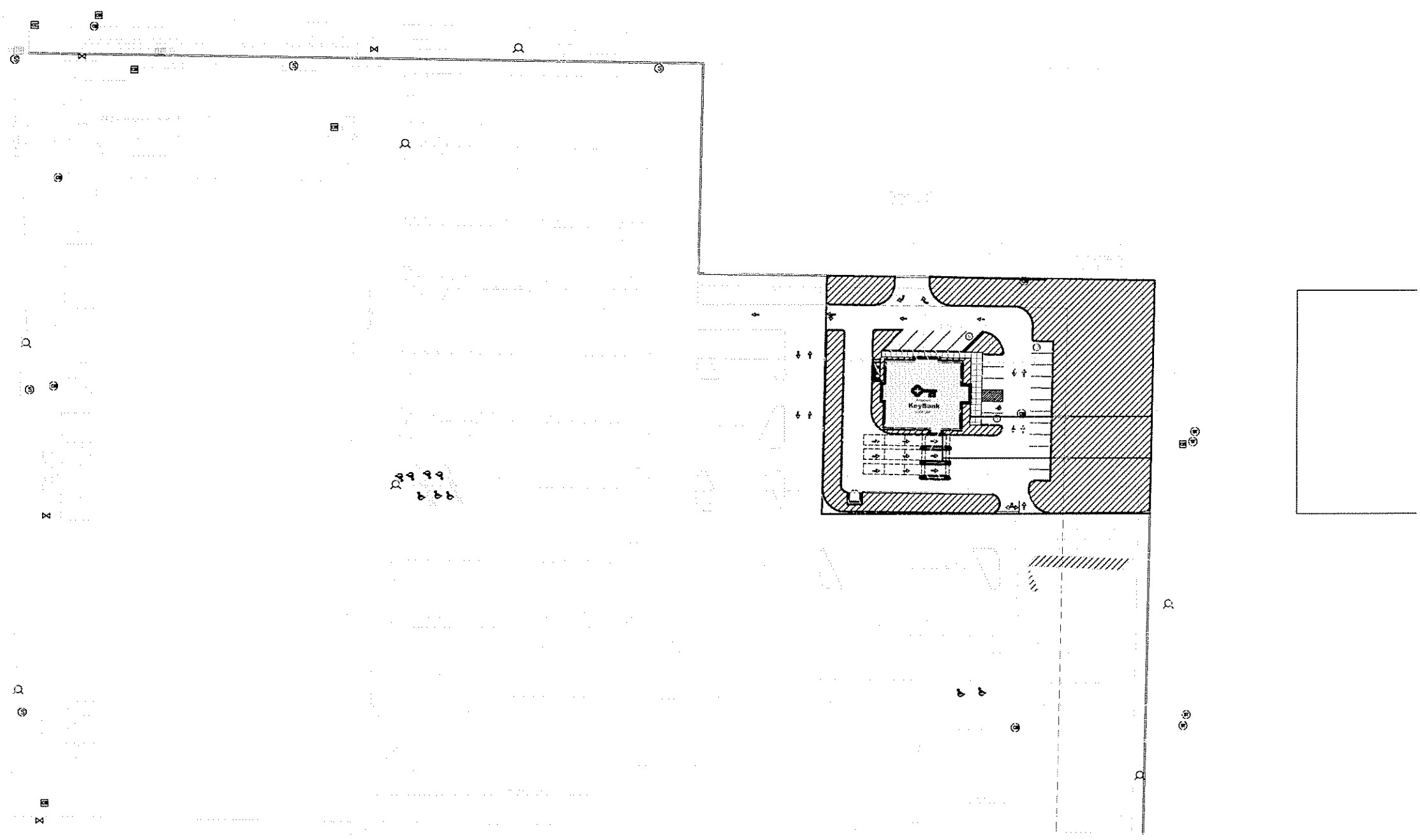
Site Plan  
Option # 6  
Revision #3

Project #: 6054.00  
October 29, 2008

Proposed Interior Improvements at:  
Rochester Hills, Michigan - PID# 6248



**vocon.**  
3142 Prospect Avenue  
Cleveland, Ohio 44115-2612  
T 216.588.0800  
866.787.7021  
www.vocon.com



1 OVERALL  
SITE PLAN  
1" = 100'-0"



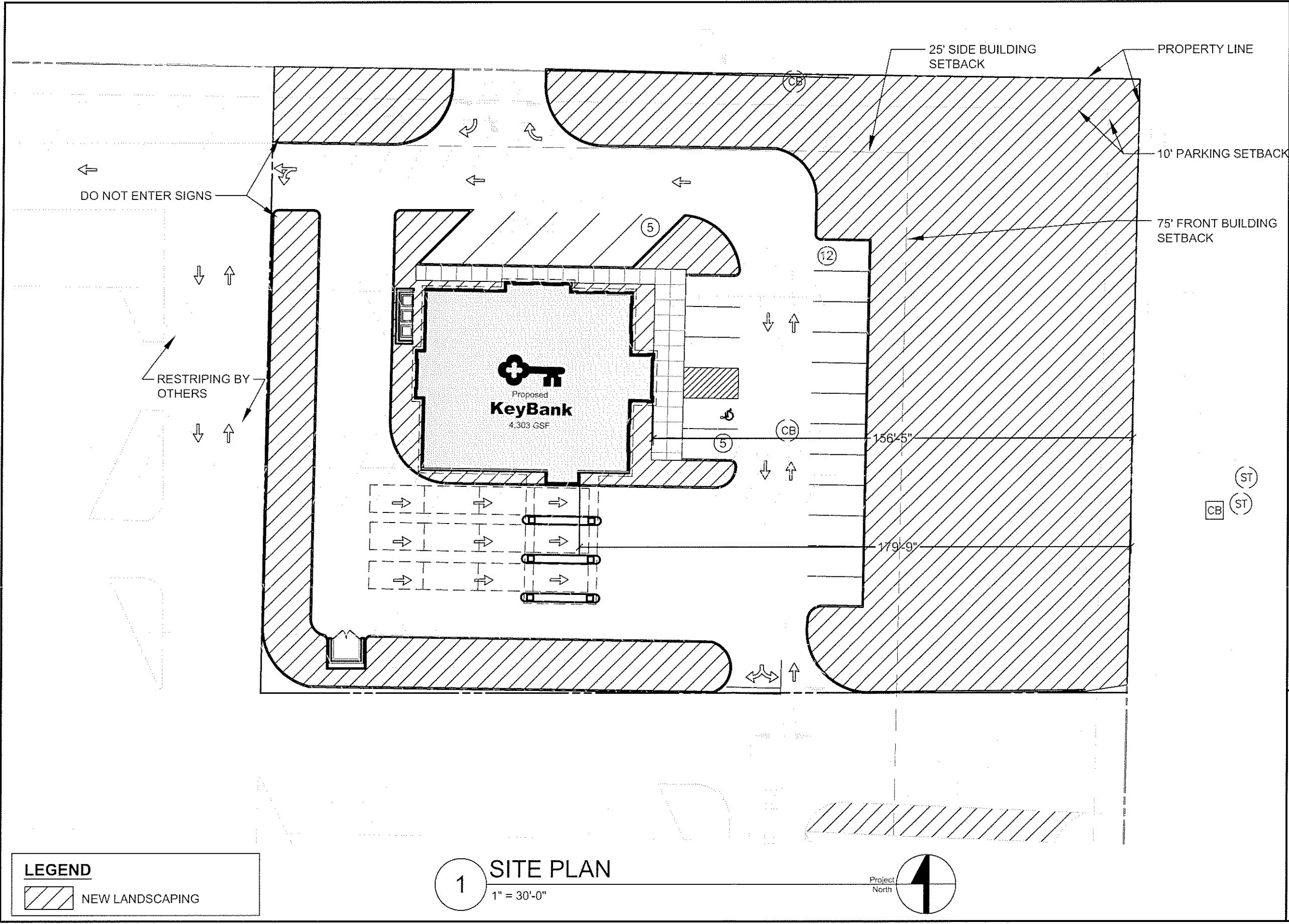
Proposed Interior Improvements at:  
Rochester Hills, Michigan - PID# 6248

**vocon.**  
3142 Prospect Avenue  
Cleveland, Ohio 44115-2612  
T 216.586.0800  
866.787.7021  
F 216.586.0801  
www.vocon.com

Site Plan  
Option # 6  
Revision #3

Project #: 6054.00  
Oct. 29, 2008

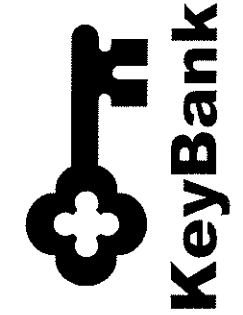




**Site Plan**  
**Option # 6**  
 Revision #3

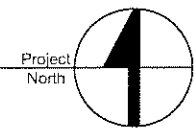
Project #: 6054.00  
 October 29, 2008

Proposed Interior Improvements at:  
 Rochester Hills, Michigan - PID# 6248

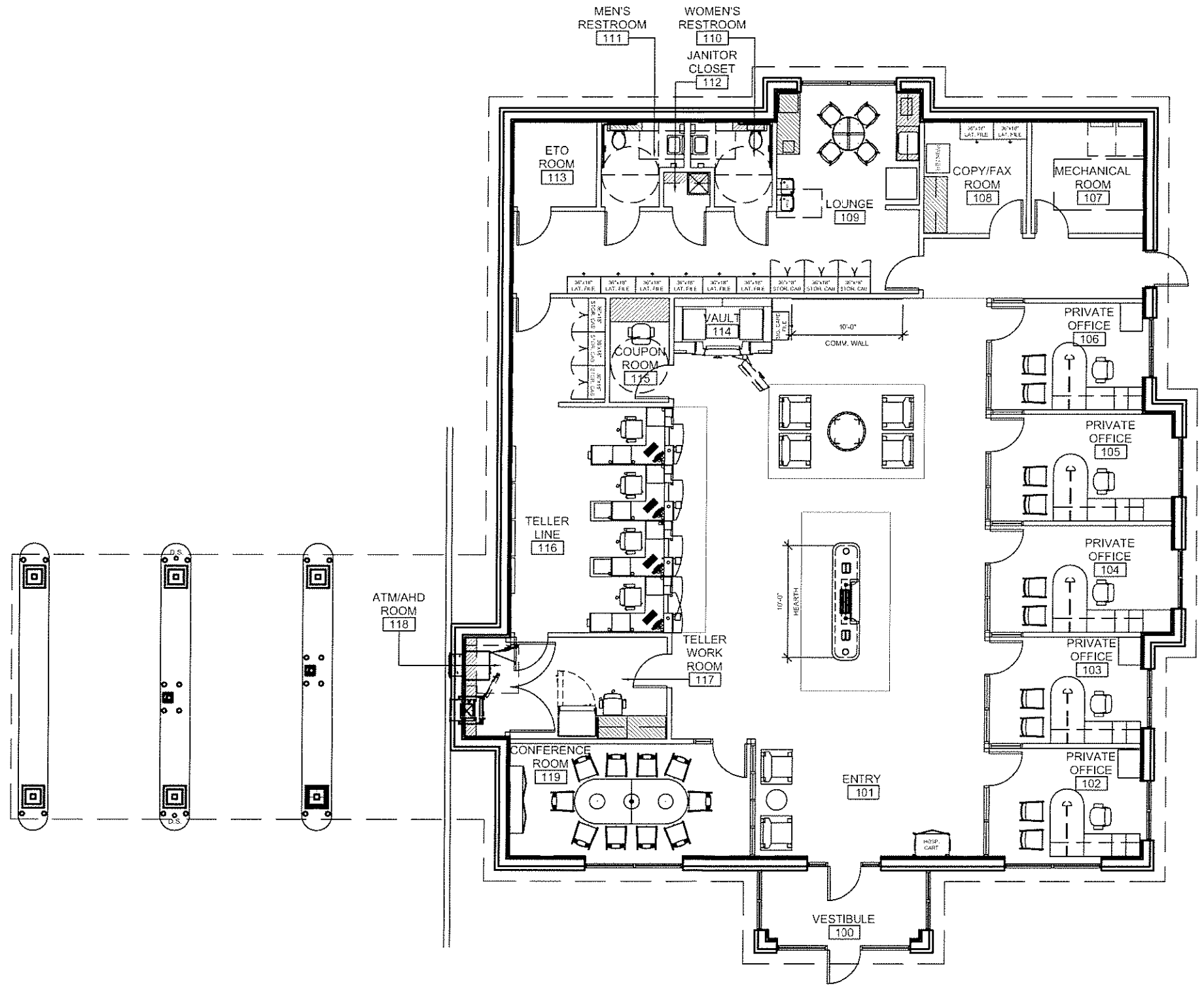


**LEGEND**  
 NEW LANDSCAPING

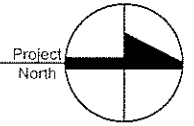
**1** **SITE PLAN**  
 1" = 30'-0"



**vocon.**  
 3142 Prospect Avenue  
 Cleveland, Ohio 44115-2612  
 T 216.588.0800 F 216.588.0801  
 866.787.7021 www.vocon.com



**1 FLOOR PLAN**  
 3/32" = 1'-0"



**Floor Plan  
 Option # 1**

Project #: 6054.00  
 November 20, 2008

Proposed Interior Improvements at:  
 Rochester Hills, Michigan PID# 6248



**vocon.**  
 3142 Prospect Avenue  
 Cleveland, Ohio 44115-2612  
 T 216.588.0800 F 216.588.0801  
 866.787.7021 www.vocon.com

