



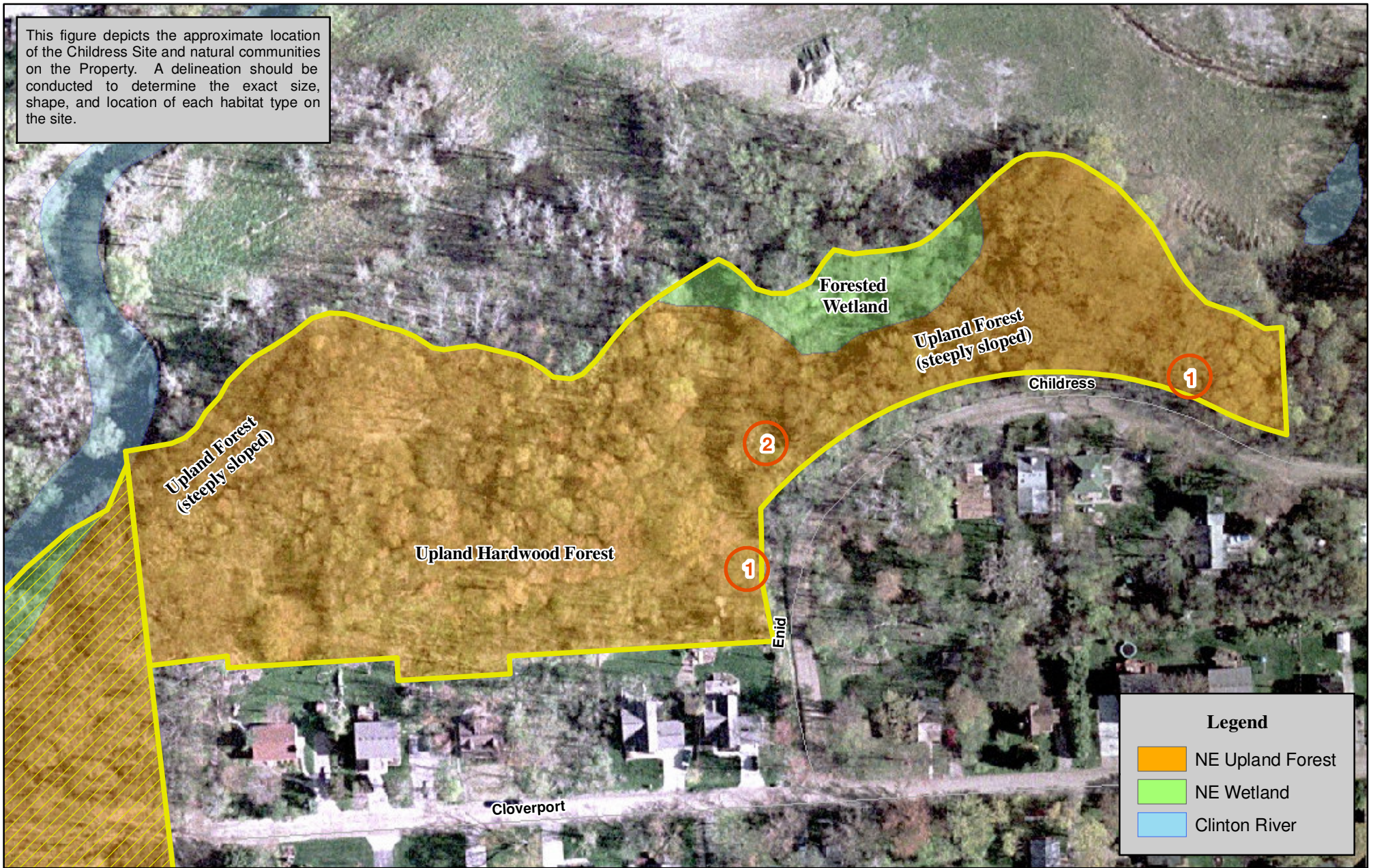
**NISWANDER ENVIRONMENTAL, LLC**  
*Finding Solutions in a Complex World*

## **APPENDIX B**

### **CHILDRESS PROPERTY**



This figure depicts the approximate location of the Childress Site and natural communities on the Property. A delineation should be conducted to determine the exact size, shape, and location of each habitat type on the site.



**Figure 4. Natural Features Map - Childress Site**

NE 1210 Rochester Hills Greenspace Inventoy

5.31-acre Childress Property

Section 15 of Rochester Hills, Oakland, Co., MI


Source: MiGDL, City of Rochester Hills GIS Dept.

Habitat Assesment: May 6, 2010 May 16, 2010 and June 16, 2010

Map Created: June 21, 2010

0 50 100 200 Feet



 **NE** NISWANDER ENVIRONMENTAL, LLC  
 10524 E. Grand River Ave., Suite 103, Brighton, MI 48116  
 810.225.0539 Fax: 810.225.0653



NE 1210 Rochester Hills Greenspace Assessment and FQA

Site: Childress

Habitat Type: Overall

Sampling Dates: May 6, 2010 May 16, 2010 June 16, 2010

Total Species - 81

Mean C Value - 2.51

FQI Score - 22.59

Native - 60 (74%)

Adventive - 21 (26%)

Habitat  
UF - Upland Forest  
W - Wetland

Species	Common Name	C Value	Wetness (status)	Habitat
<i>Acer negundo</i>	box elder	0	-2 (FACW-)	UF, W
<i>Acer nigrum</i>	black maple	4	3 (FACU)	UF
<i>Acer rubrum</i>	red maple	1	0 (FAC)	UF, W
<i>Acer saccharinum</i>	silver maple	2	-3 (FACW)	UF, W
<i>Acer saccharum</i>	sugar maple	5	3 (FACU)	UF
<i>Agrimonia gryposepala</i>	tall agrimony	2	2 (FACU+)	UF
<i>Agrimonia parviflora</i>	swamp agrimony	4	-1 (FAC+)	W
<i>Alliaria petiolata</i>	garlic mustard	*	0 (FAC)	UF, W
<i>Anemone quinquefolia</i>	wood anemone	5	0 (FAC)	UF
<i>Arctium lappa</i>	great burdock	*	2 (FACU+)	UF
<i>Arisaema triphyllum</i>	jack-in-the-pulpit	5	-2 (FACW-)	UF
<i>Aster lanceolatus</i>	Eastern lined aster	2	-3 (FACW)	UF, W
<i>Barbarea vulgaris</i>	winter cress	*	0 (FAC)	UF
<i>Berberis thunbergii</i>	barberry	*	4 (FACU-)	UF
<i>Carex cristatella</i>	crested oval sedge	3	-4 (FACW+)	W
<i>Carex leptoneura</i>	nerveless woodland sedge	3	0 (FAC)	UF
<i>Carex pensylvanica</i>	Pennsylvania sedge	4	5 (UPL)	UF
<i>Carex scoparia</i>	lance fruited oval sedge	4	-3 (FACW)	W
<i>Carpinus caroliniana</i>	musclewood	6	0 (FAC)	UF
<i>Carya ovata</i>	shagbark hickory	5	3 (FACU)	UF
<i>Catalpa speciosa</i>	Northern catalpa	*	3 (FACU)	UF
<i>Celastrus orbiculatus</i>	Oriental bittersweet	*	5 (UPL)	UF
<i>Cirsium arvense</i>	Canada thistle	*	3 (FACU)	UF
<i>Cornus florida</i>	flowering dogwood	8	4 (FACU-)	UF
<i>Cornus foemina</i>	gray dogwood	1	-2 (FACW-)	UF, W
<i>Dactylis glomerata</i>	orchard grass	*	3 (FACU)	UF
<i>Elaeagnus umbellata</i>	autumn olive	*	3 (FACU)	UF
<i>Eleocharis obtusa</i>	spikerush	3	-5 (OBL)	W
<i>Erythronium americanum</i>	trout lily	5	5 (UPL)	UF
<i>Fragaria virginiana</i>	wild strawberry	2	1 (FAC-)	UF
<i>Fraxinus pennsylvanica</i>	green ash	2	-3 (FACW)	UF, W
<i>Galium aparine</i>	annual bedstraw	0	3 (FACU)	UF
<i>Geranium maculatum</i>	wild geranium	4	3 (FACU)	UF
<i>Geum aleppicum</i>	yellow avens	3	-1 (FAC+)	UF, W
<i>Glechoma hederacea</i>	ground ivy	*	3 (FACU)	UF
<i>Hamamelis virginiana</i>	witch hazel	5	3 (FACU)	UF
<i>Hesperis matronalis</i>	dame's rocket	*	5 (UPL)	UF
<i>Impatiens capensis</i>	jewelweed	2	-3 (FACW)	W

## NE 1210 Rochester Hills Greenspace Assessment and FQA

Site: Childress

## Habitat

UF - Upland Forest

W - Wetland

Species	Common Name	C Value	Wetness (status)	Habitat
<i>Juglans nigra</i>	black walnut	5	3 (FACU)	UF
<i>Ligustrum vulgare</i>	common privet	*	1 (FAC-)	UF
<i>Lonicera tartarica</i>	tartarian honeysuckle	*	3 (FACU)	UF, W
<i>Maianthemum canadense</i>	Canada mayflower	4	0 (FAC)	UF
<i>Malus coronaria</i>	crab apple	4	5 (UPL)	UF
<i>Ostrya virginiana</i>	hop hornbeam	5	4 (FACU-)	UF
<i>Oxalis stricta</i>	common yellow wood sorrel	0	3 (FACU)	UF
<i>Parthenocissus quinquefolia</i>	Virginia creeper	5	1 (FAC-)	UF, W
<i>Phleum pratense</i>	timothy	*	3 (FACU)	UF
<i>Phragmites australis</i>	common reed	0	-4 (FACW+)	W
<i>Podophyllum peltatum</i>	may apple	3	3 (FACU)	UF
<i>Polygonum virginianum</i>	Virginia knotweed	4	0 (FAC)	UF
<i>Populus deltoides</i>	Eastern cottonwood	1	-1 (FAC+)	UF, W
<i>Potentilla norvegica</i>	rough cinquefoil	0	0 (FAC)	UF
<i>Potentilla recta</i>	rough-fruited cinquefoil	*	5 (UPL)	UF
<i>Prunus pensylvanica</i>	pin cherry	3	4 (FACU-)	UF
<i>Prunus serotina</i>	black cherry	2	3 (FACU)	UF
<i>Quercus alba</i>	white oak	5	3 (FACU)	UF
<i>Quercus rubra</i>	red oak	5	3 (FACU)	UF
<i>Ranunculus acris</i>	common buttercup	*	-2 (FACW-)	W
<i>Rhamnus cathartica</i>	common buckthorn	*	3 (FACU)	UF
<i>Robina pseudoacacia</i>	black locust	*	4 (FACU-)	UF
<i>Rosa multiflora</i>	multiflora rose	*	3 (FACU)	UF
<i>Rubus allegheniensis</i>	common blackberry	1	2 (FACU+)	UF
<i>Rubus occidentalis</i>	black raspberry	1	5 (UPL)	UF
<i>Salix nigra</i>	black willow	5	-5 (OBL)	W
<i>Sanguinaria canadensis</i>	bloodroot	5	4 (FACU-)	UF
<i>Smilacina stellata</i>	starry false solomon's-seal	5	1 (FAC-)	UF
<i>Solanum dulcamara</i>	bittersweet nightshade	*	0 (FAC)	UF, W
<i>Solidago gigantea</i>	late goldenrod	3	-3 (FACW)	W
<i>Sorghastrum nutans</i>	Indian grass	6	2 (FACU+)	UF
<i>Taraxacum officinale</i>	dandelion	*	3 (FACU)	UF
<i>Thalictrum dioicum</i>	early meadow rue	6	2 (FACU+)	UF
<i>Tilia americana</i>	basswood	5	3 (FACU)	UF
<i>Toxicodendron radicans</i>	poison ivy	2	-1 (FAC+)	UF, W
<i>Trillium grandiflorum</i>	common trillium	5	5 (UPL)	UF
<i>Ulmus americana</i>	American elm	1	-2 (FACW-)	UF, W
<i>Ulmus rubra</i>	slippery elm	2	0 (FAC)	UF, W
<i>Urtica dioica</i>	stinging nettle	1	-1 (FAC+)	UF, W
<i>Viburnum lentago</i>	nannyberry	4	-1 (FAC+)	UF
<i>Viburnum opulus americanum</i>	highbush cranberry	5	-3 (FACW)	UF, W
<i>Viola pubescens</i>	yellow violet	4	4 (FACU-)	UF
<i>Vitis aestivalis</i>	summer grape	6	3 (FACU)	UF



### Photographic Log



**Photo 1**

Most of the Childress Property is steeply sloped.



**Photo 2**

The northwest corner of the Property is adjacent to the Clinton River.



### Photographic Log



**Photo 3**

Upland hardwood trees dominate the slopes of the Childress site.



**Photo 4**

Significant portions of the Property lack an herbaceous understory.



**Photographic Log****Photo 5**

Spring wildflowers are abundant at the Childress Property.

**Photo 6**

Trillium (above) is common throughout the site.



### Photographic Log



**Photo 7**

Several areas within the Property are densely vegetated by non-native shrubs such as honeysuckle, bittersweet, buckthorn, and privet.



**Photo 8**

The topographic transition from upland forest to forested wetland is abrupt.



**Photographic Log**



**Photo 9**

Forested wetland is present at the toe-of-slope.



**Photo 10**

Trash is common at the Childress site.