



---

---

---

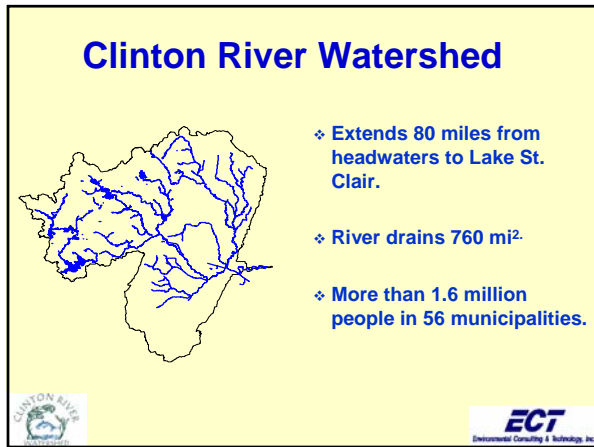
---

---

---

---

---



---

---

---

---

---

---

---

---



---

---

---

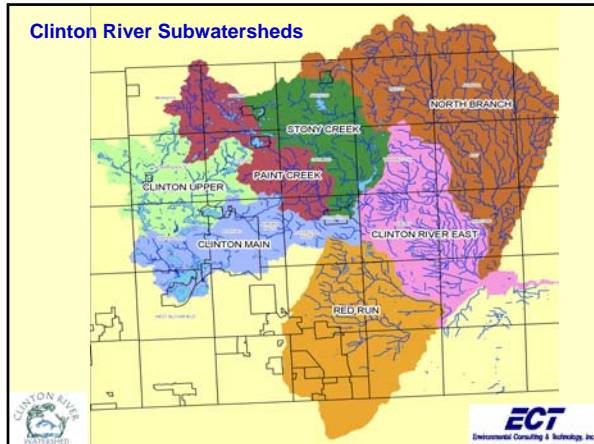
---

---

---

---

---




---

---

---

---

---

---

---

---

### Stony & Paint Subwatersheds

- ❖ Approximately 140 square miles.
- ❖ Population 86,000 in 14 municipalities.
- ❖ Good water quality.
- ❖ High quality riparian corridor.
- ❖ Excellent fishing opportunities.

The inset map shows the Stony and Paint subwatersheds in detail, with labels for various municipalities and features. Logos for the Clinton River Watershed and ECT Environmental Consulting & Technology, Inc. are present at the bottom.

---

---

---

---

---

---

---

---

### Stony/Paint Subwatershed Permittees

❖ Addison Township	❖ Oakland Township
❖ City of Auburn Hills	❖ Orion Township
❖ Brandon Township	❖ Oxford Schools
❖ Bruce Township	❖ Oxford Township
❖ Independence Township	❖ Oxford Village
❖ Lake Orion	❖ City of Rochester
❖ Macomb County	❖ City of Rochester Hills
❖ Oakland County	❖ Rochester Schools
	❖ Shelby Township
	❖ Washington Township

Logos for the Clinton River Watershed and ECT Environmental Consulting & Technology, Inc. are present at the bottom.

---

---

---

---

---

---

---

---

## Why this Discussion?



Paint Creek in Downtown Rochester

- ❖ Community Support for Stony/Paint Subwatershed Management Plan



---

---

---

---

---

---

---

---

## Paint & Stony Creeks' Characteristics



- ❖ Paint Creek Designated Trout Stream!
- ❖ Lots of public access.
- ❖ Annual brown trout stocking.
- ❖ Opportunities for Preserving High Quality Areas



---

---

---

---

---

---

---

---

## Lakes & Impoundments along Stony & Paint Creeks



Stony Creek Lake

- ❖ Paint Creek
  - Lake Orion
  - Many Smaller Lakes
- ❖ Stony Creek
  - Lakeville Lake
  - Stony Creek Lake



---

---

---

---

---

---

---

---

## What does this mean to us?



- ❖ We are meeting our permit requirements!
- ❖ Goals are to preserve high quality areas.
- ❖ Minimize impacts from new developments.
- ❖ Continue participation in Stony/Paint Subwatershed Group



---

---

---

---

---

---

---

---

## What does this mean to us?



- ❖ Table 5.4b Ongoing and Proposed Actions for all Stony/Paint Subwatershed Representatives



---

---

---

---

---

---

---

---

## Next Steps?

- ❖ Resolution for Support
- ❖ Plan Submitted to MDEQ November 1, 2005
- ❖ Storm Water Pollution Prevention Initiative (SWPPI) Due May 1, 2006.
- ❖ SWPPI is community-specific actions.
- ❖ SWPPI prepared from this Plan we are discussing today.



---

---

---

---

---

---

---

---



---

---

---

---

---

---

---

---