

APPENDIX A
Noise Receptor and Noise Barrier Locations



- Legend**
- FMS 1 Field Measurement Site
 - FMS 1 Noise Modeling Site
 - Modeled Barrier
 - 66 dBA Leq Setback

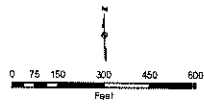


FIGURE 3
 Noise Analysis
 M-59
 Crooks Road to Ryan Road
 Oakland and Macomb Counties, Michigan



- Legend**
- Field Measurement Site
 - Noise Modeling Site
 - Modeled Barrier
 - 66 dBA Leq Setback

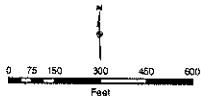
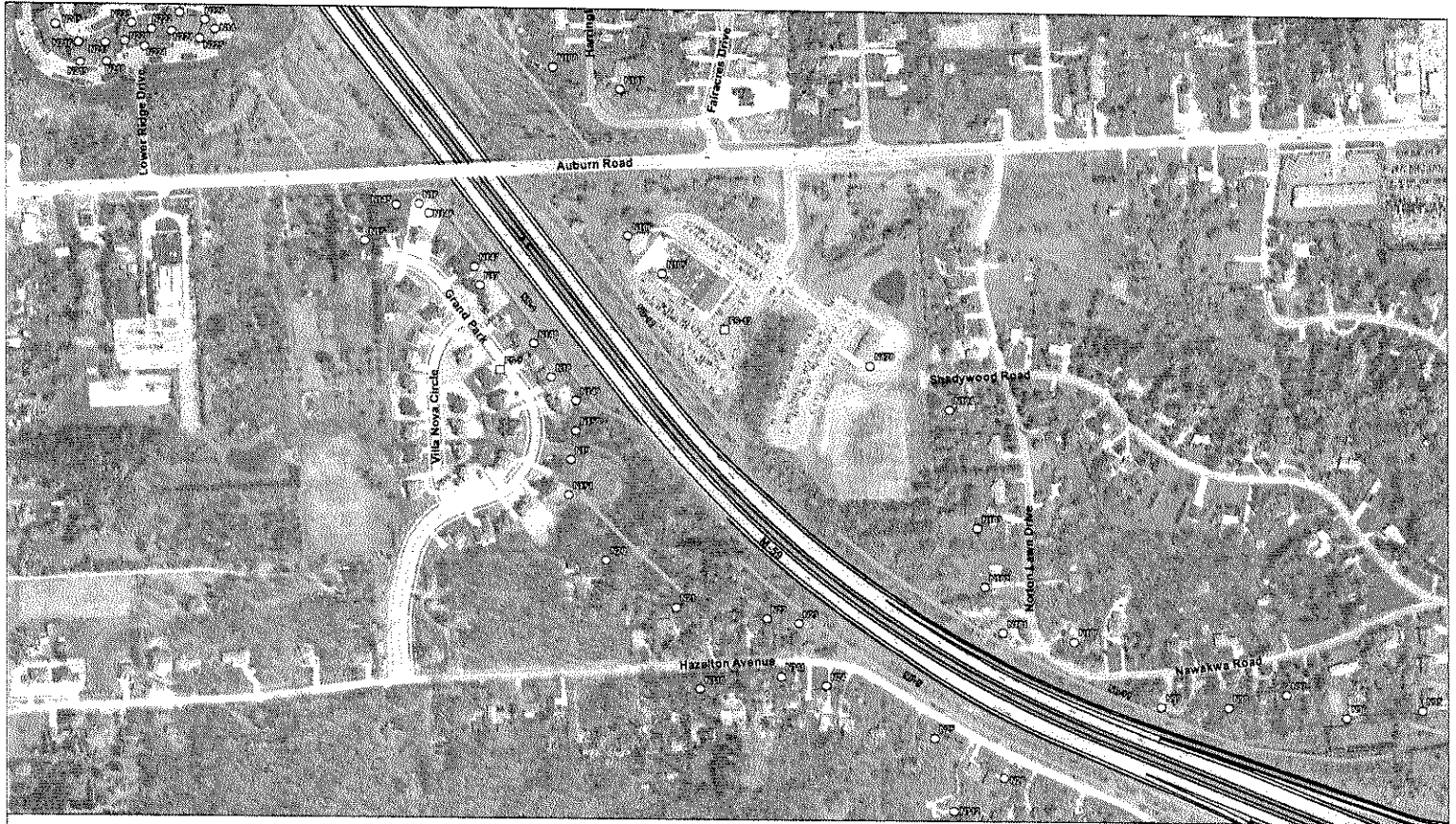


FIGURE 4
 Noise Analysis
 M-59
 Crooks Road to Ryan Road
 Oakland and Macomb Counties, Michigan



- Legend**
- Field Measurement Site
 - Noise Modeling Site
 - ▬ Modeled Barrier
 - ⋯ 66 dBA Leq Setback

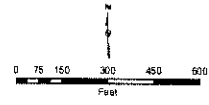


FIGURE 5
 Noise Analysis
 M-59
 Crooks Road to Ryan Road
 Oakland and Macomb Counties, Michigan

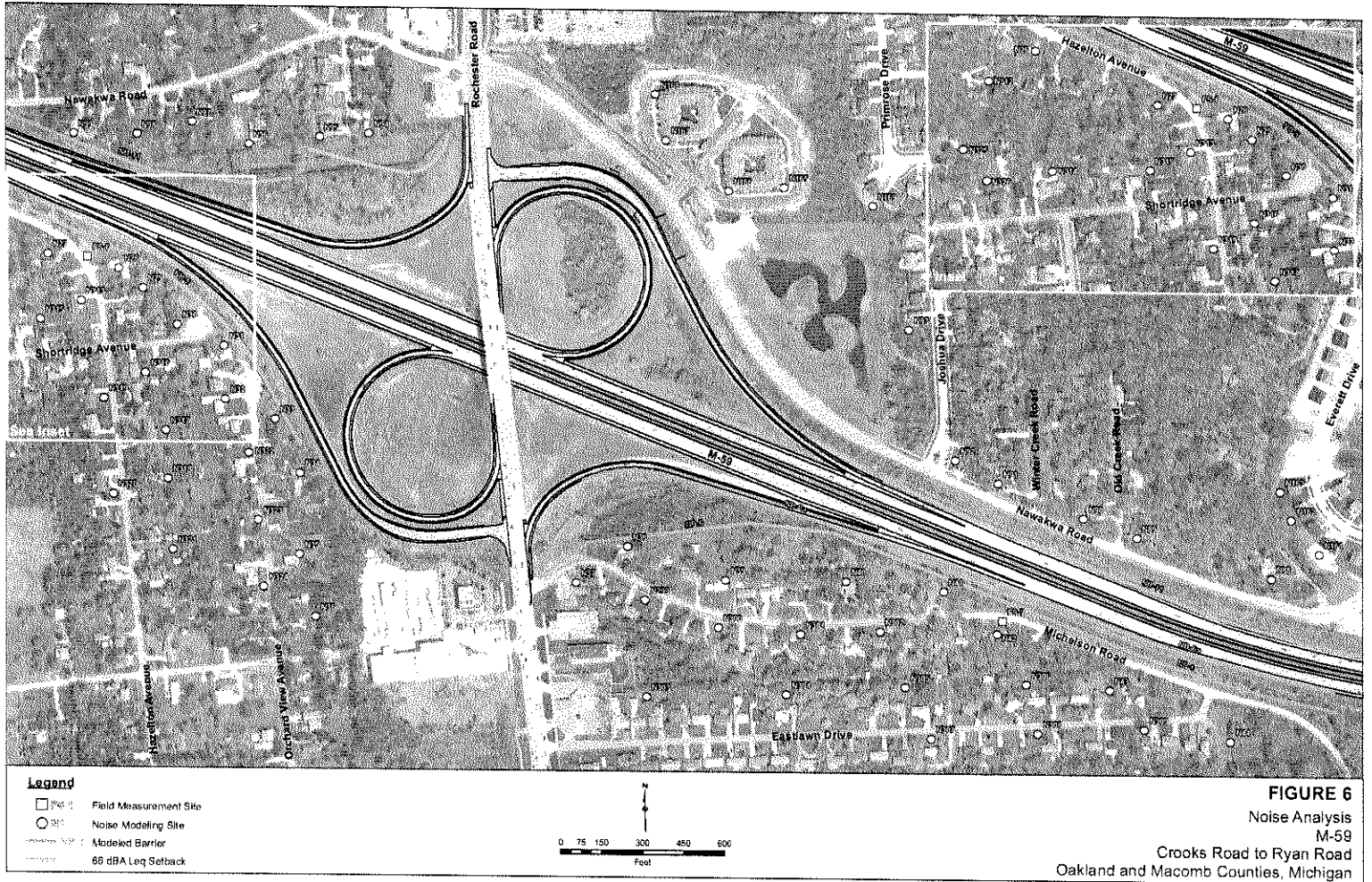




FIGURE 7
 Noise Analysis
 M-59
 Crooks Road to Ryan Road
 Oakland and Macomb Counties, Michigan



- Legend**
- Field Measurement Site
 - Noise Modeling Site
 - Benefited Receivers from Noise Barrier 8
 - Motorized Barriers
 - Feasible and Reasonable Noise Barrier
 - 66 dBA Leq 50' Backs

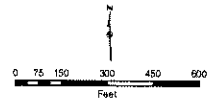


FIGURE 8
 Noise Analysis
 M-59
 Crooks Road to Ryan Road
 Oakland and Macomb Counties, Michigan

