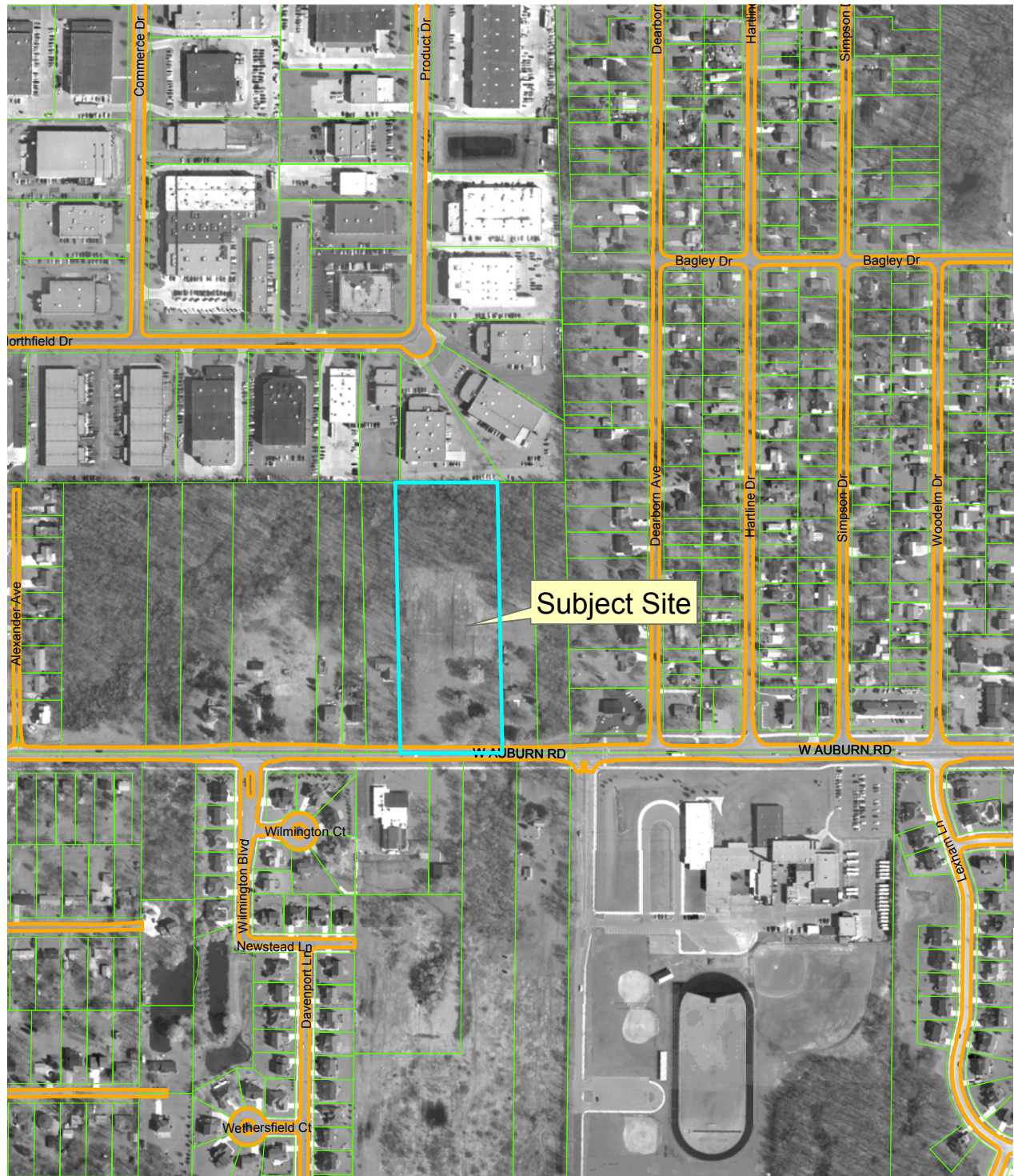


# Proposed Grandview Site Condominiums

## City File No. 02-029



Subject Site



Aerial photographs as of April 2002.  
Parcel lines were obtained on 01-07-04 from Oakland County.  
Although the information provided by this map is believed to be reliable, its accuracy is not warranted in any way. The City of Rochester Hills assumes no liability for any claims arising from the use of this map.

06/17/03