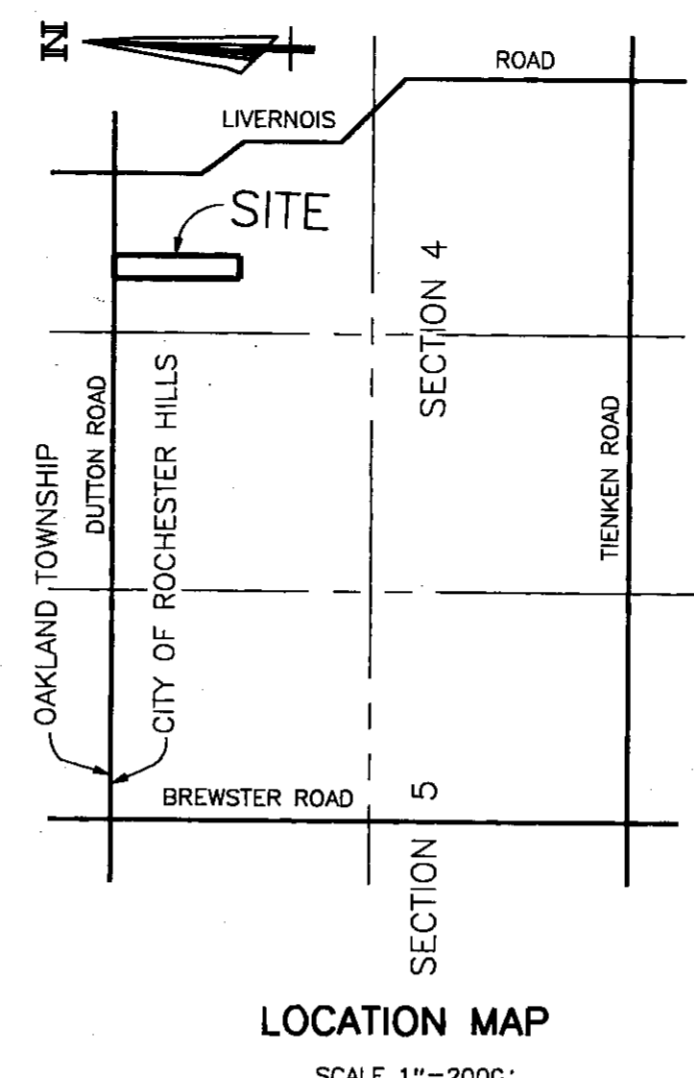
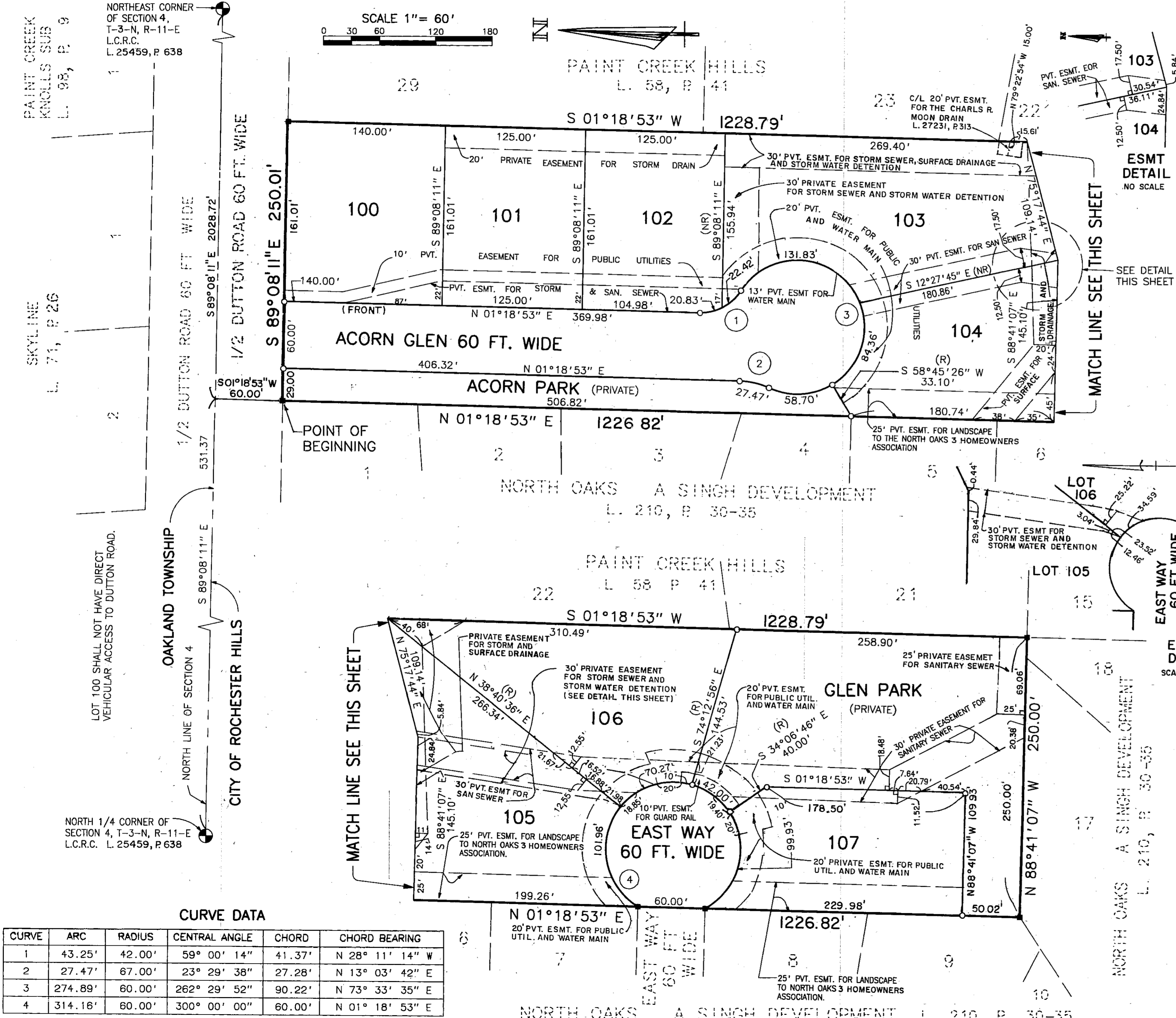


NORTH OAKS - A SINGH DEVELOPMENT NO. 3

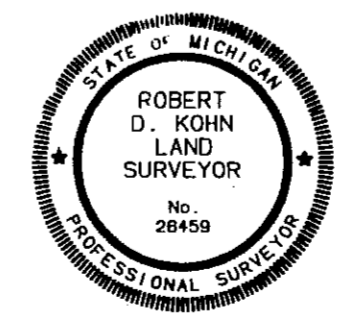
A PART OF THE NORTHEAST 1/4 OF SECTION 4, T-3-N, R-11-E,
CITY OF ROCHESTER HILLS, OAKLAND COUNTY, MICHIGAN



1. ALL DIMENSIONS ARE GIVEN IN FEET.
2. CURVILINEAR MEASUREMENTS ARE ARC DISTANCES.
3. THE SYMBOL "O" INDICATES A SET MONUMENT WHICH IS A 1/2" DIAMETER STEEL BAR 36" LONG, ENCASED IN CONCRETE 4" IN DIAMETER.
4. LOT CORNERS HAVE BEEN MARKED WITH STEEL BARS ONE-HALF (1/2) INCH IN DIAMETER, AND EIGHTEEN (18) INCHES IN LENGTH.
5. (R) INDICATES A RADIAL LINE
6. (NR) INDICATES A NON RADIAL
7. ∟ INDICATES A RIGHT ANGLE
8. BEARINGS FOR THIS SUBDIVISION ARE BASED ON THE WEST LINE OF THE RECORDED PLAT OF "PAINT CREEK HILLS" AS RECORDED IN LIBER 58, PAGE 41 OF PLATS, OAKLAND COUNTY RECORDS.
9. ■ DENOTES FOUND MONUMENT 1/2 INCH DIAMETER STEEL BAR ENCASED IN CONCRETE 4 INCHES IN DIAMETER

CURVE DATA

CURVE	ARC	RADIUS	CENTRAL ANGLE	CHORD	CHORD BEARING
1	43.25'	42.00'	59° 00' 14"	41.37'	N 28° 11' 14" W
2	27.47'	67.00'	23° 29' 38"	27.28'	N 13° 03' 42" E
3	274.89'	60.00'	262° 29' 52"	90.22'	N 73° 33' 35" E
4	314.16'	60.00'	300° 00' 00"	60.00'	N 01° 18' 53" E



Robert D. Kohn

Giffels-Webster Engineers Inc.
ENGINEERS - SURVEYORS - PLANNERS
2771 BOND STREET ROCHESTER HILLS MICHIGAN 48309
(248) 852-3100

NORTH OAKS - A SINGH DEVELOPMENT NO. 3

LIBER PAGE
SHEET 2 OF 2 SHEETS

A PART OF THE NORTHEAST 1/4 OF SECTION 4, T-3-N, R-11-E,
CITY OF ROCHESTER HILLS, OAKLAND COUNTY, MICHIGAN

SURVEYOR'S CERTIFICATE

I ROBERT D. KOHN, SURVEYOR, CERTIFY THAT I HAVE SURVEYED, DIVIDED, AND MAPPED THE LAND SHOWN ON THIS PLAT, DESCRIBED AS FOLLOWS: "NORTH OAKS - A SINGH DEVELOPMENT NO. 3" A PART OF THE NORTHEAST 1/4 OF SECTION 4, T-3-N, R-11-E, CITY OF ROCHESTER HILLS, OAKLAND COUNTY, MICHIGAN, MORE PARTICULARLY DESCRIBED AS: COMMENCING AT THE NORTH 1/4 CORNER OF SAID SECTION 4; THENCE S. 89°08'11" E., 531.37 FEET ALONG THE NORTH LINE OF SECTION 4, (DUTTON ROAD) AND IN PART ALONG THE NORTH LINE OF "NORTH OAKS - A SINGH DEVELOPMENT", AS RECORDED IN LIBER 210, PAGES 30 THROUGH 35, OF PLATS, OAKLAND COUNTY RECORDS AND IN PART ALONG THE SOUTH LINE OF "SKYLINE SUBDIVISION" AS RECORDED IN LIBER 71 PAGE 26, OF PLATS OF OAKLAND COUNTY RECORDS, TO THE NORTHEAST CORNER OF SAID "NORTH OAKS - A SINGH DEVELOPMENT"; THENCE S. 01°18'53" W., 60.00 FEET ALONG THE EAST LINE OF SAID "NORTH OAKS - A SINGH DEVELOPMENT" TO THE POINT OF BEGINNING ON THE SOUTHERLY RIGHT-OF-WAY LINE OF DUTTON ROAD; THENCE S. 89°08'11" E., 250.01 FEET ALONG SAID SOUTHERLY RIGHT-OF-WAY LINE TO A POINT ON THE WEST LINE OF "PAINT CREEK HILLS" AS RECORDED IN LIBER 58, PAGE 41 OF PLATS, OAKLAND COUNTY RECORDS; THENCE S. 01°18'53" W., 1228.79 FEET ALONG THE WEST LINE OF SAID SUBDIVISION TO THE NORTHEAST CORNER OF LOT 18 OF SAID "NORTH OAKS - A SINGH DEVELOPMENT"; THENCE THE FOLLOWING TWO (2) COURSES BEING ALONG THE PERIMETER OF "NORTH OAKS - A SINGH DEVELOPMENT", (1) N. 88°41'07" W. 250.00 FEET, AND (2) N. 01°18'53" E., 1226.82 FEET TO THE POINT OF BEGINNING AND CONTAINING 7.05 ACRES, AND 8 LOTS NUMBERED 100 THROUGH 107 AND TWO PRIVATE PARKS.

THAT I HAVE MADE SUCH SURVEY, LAND DIVISION AND PLAT BY THE DIRECTION OF THE OWNERS OF SUCH LAND.

THAT SUCH PLAT IS A CORRECT REPRESENTATION OF ALL THE EXTERIOR BOUNDARIES OF THE LAND SURVEYED AND THE SUBDIVISION OF IT.

THAT THE REQUIRED MONUMENTS AND LOT MARKERS HAVE BEEN LOCATED IN THE GROUND OR THAT SURETY HAS BEEN DEPOSITED WITH THE MUNICIPALITY, AS REQUIRED BY SECTION 125 OF THE ACT.

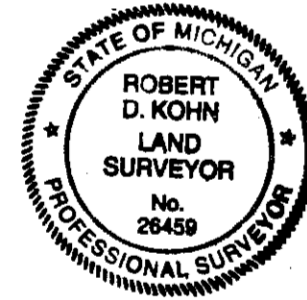
THAT THE ACCURACY OF SURVEY IS WITHIN THE LIMITS REQUIRED BY SECTION 126 OF THE ACT.

THAT THE BEARINGS SHOWN ON THE PLAT ARE EXPRESSED AS REQUIRED BY SECTION 126 (3) OF THE ACT AND AS EXPLAINED IN THE LEGEND.

GIFFELS-WEBSTER ENGINEERS, INC.
2871 BOND STREET
ROCHESTER HILLS, MI 48309-3515

DATE: MARCH 3, 2003

Robert D. Kohn
ROBERT D. KOHN, P.S. #26459



PROPRIETOR'S CERTIFICATE:

SINGH IV LIMITED PARTNERSHIP DULY ORGANIZED AND EXISTING UNDER THE LAWS OF THE STATE OF MICHIGAN, BY LUSHMAN S. GREWAL VICE PRESIDENT OF SINGH GENERAL CORPORATION, ITS MANAGER, AS PROPRIETOR HAS CAUSED THE LAND TO BE SURVEYED, DIVIDED, MAPPED AND DEDICATED AS REPRESENTED ON THIS PLAT AND THAT THE STREETS ARE FOR THE USE OF THE PUBLIC; THAT THE PUBLIC UTILITY EASEMENTS ARE PRIVATE EASEMENTS AND THAT ALL OTHER EASEMENTS ARE FOR THE USES SHOWN ON THE PLAT AND THAT ACORN PARK AND GLEN PARK ARE PRIVATE AND INTENDED FOR THE BENEFIT OF THE HOMEOWNERS OF NORTH OAKS - A SINGH DEVELOPMENT NO. 3 AND FOR OTHER SUBDIVISIONS OF THE SAME NAME WHERE TITLE IS TRACEABLE TO THIS OWNER, AND THAT LOT 100 SHALL NOT HAVE DIRECT VEHICULAR ACCESS TO DUTTON ROAD.

BY: SINGH IV LIMITED PARTNERSHIP
7125 ORCHARD LAKE ROAD
SUITE 200
WEST BLOOMFIELD, MICHIGAN 48322
REGISTER L14-054
SINGH GENERAL CORPORATION
GENERAL PARTNER

David Zaitchik
DAVID ZAITCHIK, WITNESS

James E. Dietrich
JAMES E. DIETRICH, WITNESS

BY: *Lushman S. Grewal*
LUSHMAN S. GREWAL
GENERAL CORPORATION, MANAGER

ACKNOWLEDGEMENT:

STATE OF MICHIGAN)
) S.S
OAKLAND COUNTY)

PERSONALLY CAME BEFORE ME THIS 21st DAY OF APRIL, 2003
LUSHMAN S. GREWAL VICE PRESIDENT OF SINGH GENERAL CORPORATION, MANAGER OF THE ABOVE NAMED LIMITED PARTNERSHIP TO ME KNOWN TO BE THE PERSON WHO EXECUTED THE FOREGOING INSTRUMENT AND TO ME KNOWN TO BE SUCH MANAGER OF SAID LIMITED PARTNERSHIP AND ACKNOWLEDGED THAT HE EXECUTED THE FOREGOING INSTRUMENT AS SUCH MANAGER AS THE FREE ACT AND DEED OF SAID LIMITED PARTNERSHIP BY ITS AUTHORITY.
MY COMMISSION EXPIRES: 06/08/2005

James E. Dietrich
JAMES E. DIETRICH, NOTARY PUBLIC
OAKLAND COUNTY, MICHIGAN

COUNTY TREASURER'S CERTIFICATE:

THE RECORDS IN MY OFFICE SHOW NO UNPAID TAXES OR SPECIAL ASSESSMENTS FOR THE FIVE YEARS PRECEDING November 26, 2003 INVOLVING THE LANDS INCLUDED IN THIS PLAT.

Patrick M. Dohany
PATRICK M. DOHANY
OAKLAND COUNTY TREASURER

COUNTY DRAIN COMMISSIONER'S CERTIFICATE:

APPROVED ON DECEMBER 17, 2003 AS COMPLYING WITH SECTION 192, OF ACT 288, P.A. 1967, AND THE APPLICABLE RULES AND REGULATIONS PUBLISHED BY MY OFFICE IN THE COUNTY OF OAKLAND.

John R. McCulloch
JOHN R. MCCULLOCH
OAKLAND COUNTY DRAIN COMMISSIONER

COUNTY ROAD COMMISSION CERTIFICATE:

APPROVED ON JULY 8, 2004 AS COMPLYING WITH SECTION 183, OF ACT 288, P.A. 1967, AND THE APPLICABLE PUBLISHED RULES AND REGULATIONS OF THE BOARD OF ROAD COMMISSIONERS OF THE COUNTY OF OAKLAND.

Richard G. Skarritt
RICHARD G. SKARRITT
CHAIRPERSON

Rudy D. Lozano
RUDY D. LOZANO
VICE-CHAIRPERSON

Larry P. Crake
LARRY P. CRAKE
COMMISSIONER

CERTIFICATE OF MUNICIPAL APPROVAL:

I CERTIFY THAT THIS PLAT WAS APPROVED BY THE CITY COUNCIL OF THE CITY OF ROCHESTER HILLS AT A MEETING HELD ON _____ 2004, AND WAS REVIEWED AND FOUND TO BE IN COMPLIANCE WITH ACT 288 P.A. 1967, ALSO ADEQUATE SURETY HAS BEEN DEPOSITED WITH THE CLERK FOR THE PLACING OF MONUMENTS AND LOT MARKERS WITHIN A REASONABLE LENGTH OF TIME, NOT TO EXCEED ONE YEAR FROM THE ABOVE DATE, AND THAT SURETY HAS BEEN POSTED TO INSURE THE INSTALLATION OF PUBLIC SEWER AND PUBLIC WATER SERVICES.

BEVERLY A. JASINSKI, CITY CLERK

COUNTY PLAT BOARD CERTIFICATE:

THIS PLAT HAS BEEN REVIEWED AND IS APPROVED BY THE OAKLAND COUNTY PLAT BOARD ON _____, AS BEING IN COMPLIANCE WITH ALL OF THE PROVISIONS OF ACT 288, P.A. 1967; AND THE PLAT BOARD'S APPLICABLE RULES AND REGULATIONS.

THOMAS A. LAW
CHAIRMAN OF THE BOARD OF
COMMISSIONERS

PATRICK M. DOHANY
COUNTY TREASURER

JOSEPH E. KAPELCZAK P.S.
COUNTY PLAT ENGINEER

G. WILLIAM CADDELL
REGISTER OF DEEDS

RECORDING CERTIFICATE:

STATE OF MICHIGAN)
OAKLAND COUNTY)

THIS PLAT WAS RECEIVED FOR RECORD ON THE _____ DAY OF _____, 2003, AT _____, AND RECORDED IN LIBER _____ OF PLATS, ON PAGES _____.

G. WILLIAM CADDELL, COUNTY CLERK
REGISTER OF DEEDS

Giffels-Webster Engineers Inc.
ENGINEERS - SURVEYORS - PLANNERS
2871 BOND STREET ROCHESTER HILLS MICHIGAN 48309
(248) 852-3100