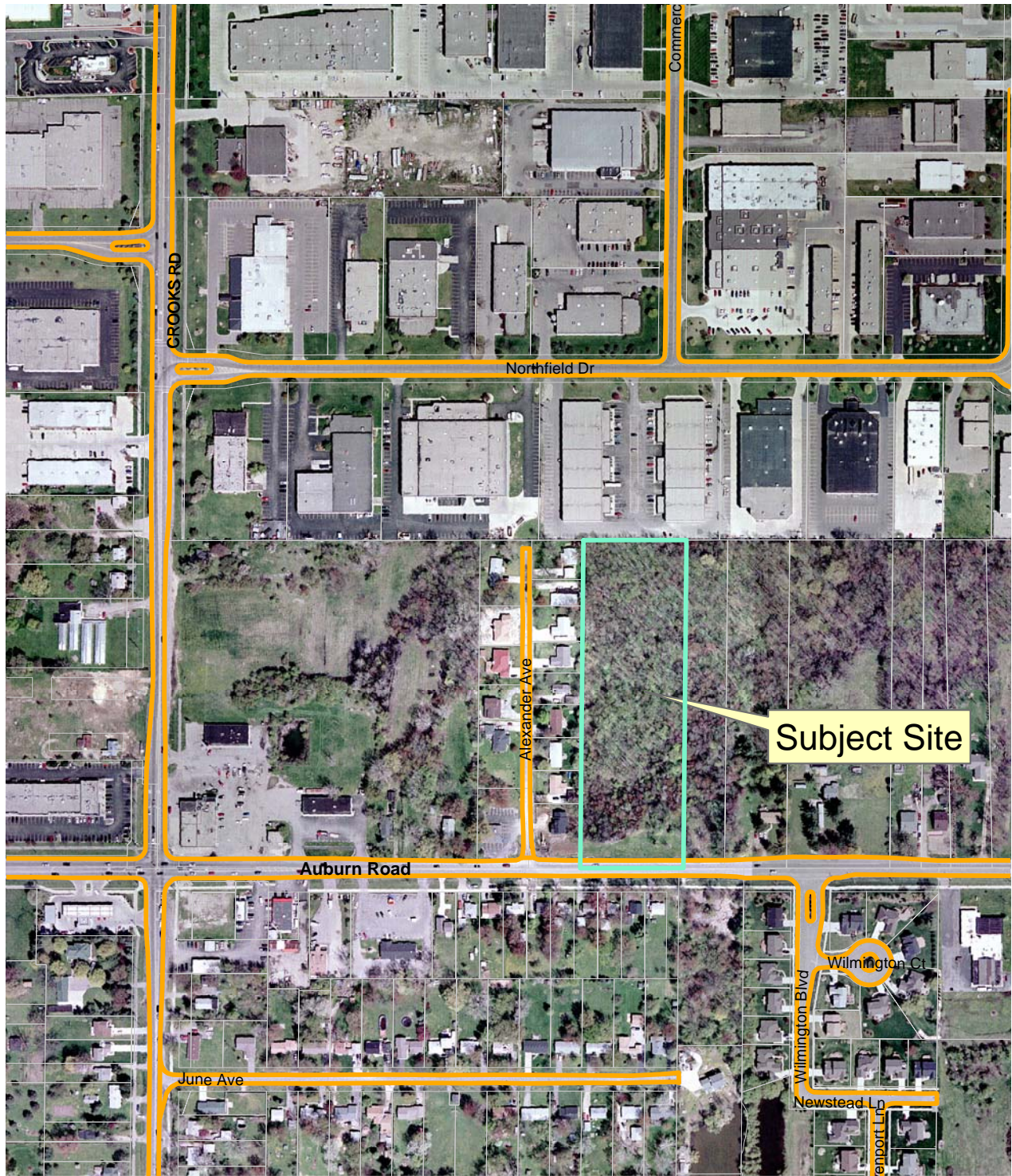


Proposed Ahmadiy'ya Muslim Community Ctr. City File No. 02-013



Aerial photographs as of April 2002.
Parcel lines were obtained on 10-01-04 from Oakland County.
Although the information provided by this map is believed to be reliable, its accuracy is not warranted in any way. The City of Rochester Hills assumes no liability for any claims arising from the use of this map.

10/15/04