
CITY OF ROCHESTER HILLS

**Fiscal
Team**

Julie Jenuwine, Fiscal x 2535

DATE: September 27, 2008

TO: City Council & Mayor

RE: Mayor's Org Chart

This memo is in response to Council Member Hill's inquiry at the City Council meeting on Wednesday September 22, 2004, as to the organizational structure in the 2005 Proposed Budget Plan Document. It is my understanding that the question was raised as to why the Finance Director or Fiscal division was structured under the Mayor rather than the City Administrator.

The "Functional City-wide Organizational Chart" (attached) in the Plan Document (page 1) illustrates that the Finance function is under the City Administrator. The purpose of this organizational chart is to demonstrate the relationship between all departments within the City.

The Mayor's "Departmental Organizational Chart" (attached) in the Plan Document (page 109) purpose is to illustrate the relationship between positions within the Mayor's Department. The organizational chart's linking/stacking demonstrates that the City Administrator and Mayor are both over the Finance Director and the rest of the department's staff.

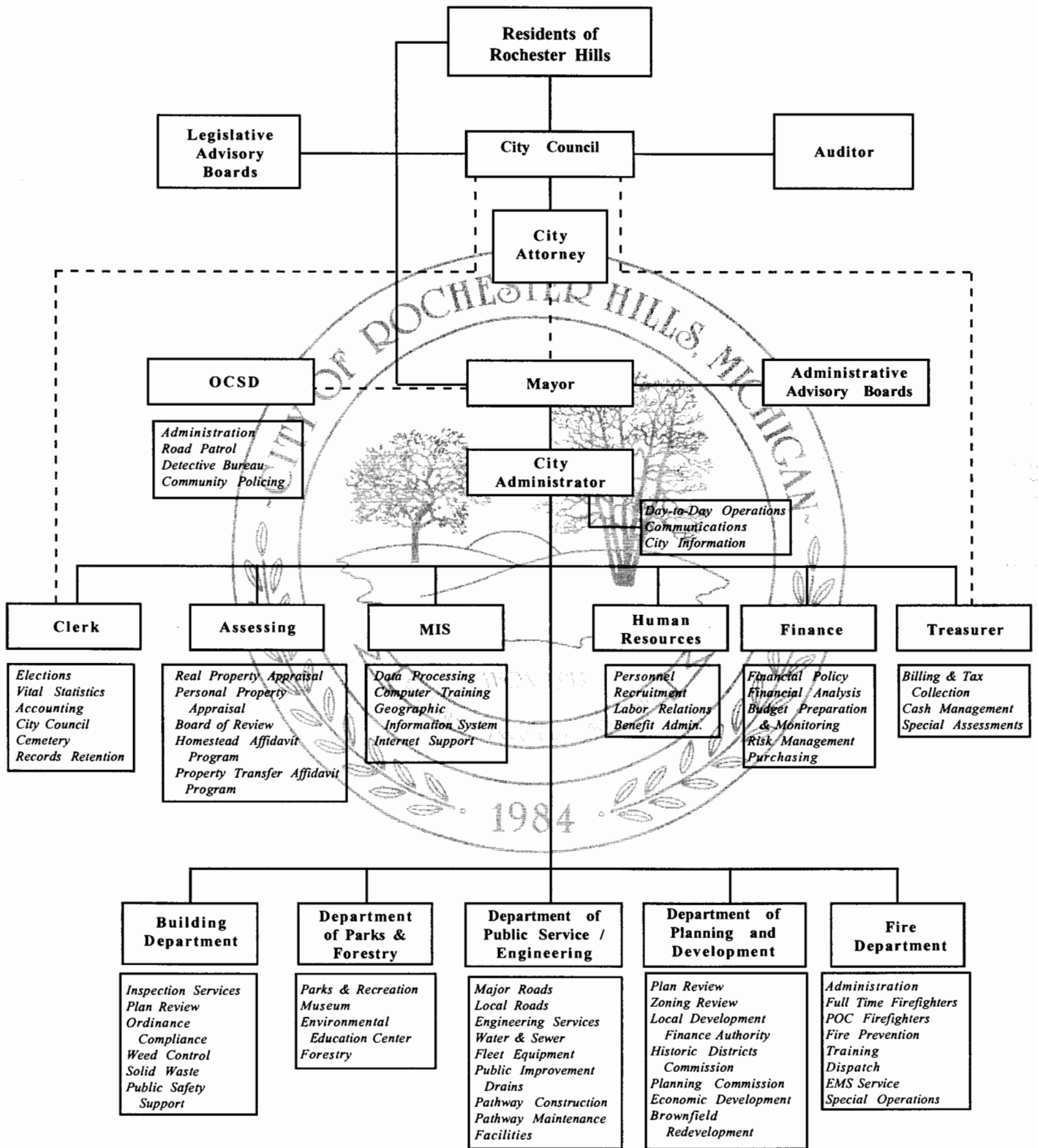
Please find attached, a revised Mayor's organizational chart (revised page 109) that hopefully, more clearly depicts the Mayor's Department hierarchy (eliminating the relationship of the Mayor's Department to the other City departments that was formerly on the left of the chart).

I hope this response satisfies any concerns. Should you wish to discuss this further, please do not hesitate to contact me.

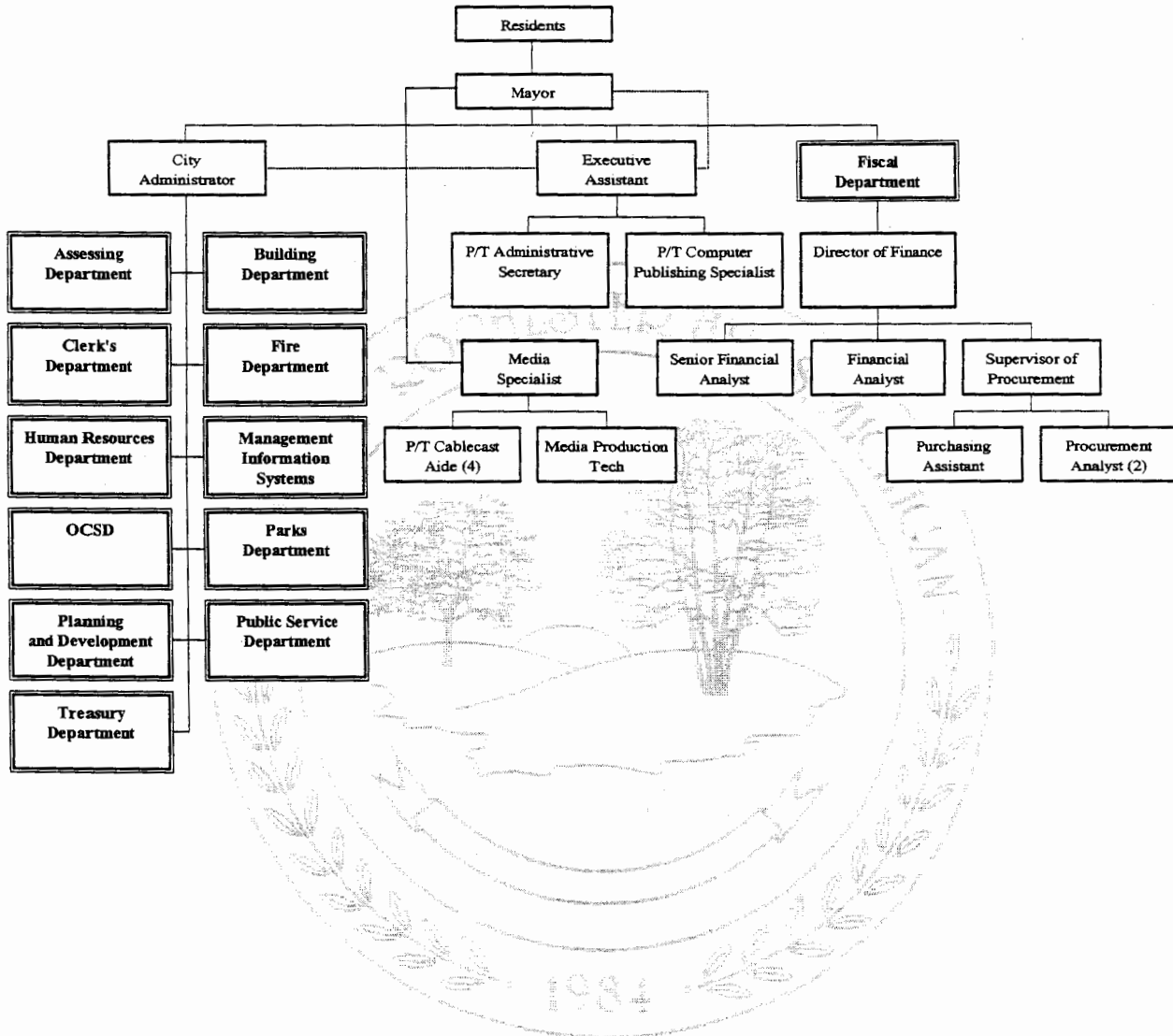
Attachments: Organizational charts (3)

BUDGET HIGHLIGHTS

FUNCTIONAL CITY-WIDE ORGANIZATIONAL CHART



DEPARTMENT ORGANIZATIONAL CHART



DEPARTMENT ORGANIZATIONAL CHART

