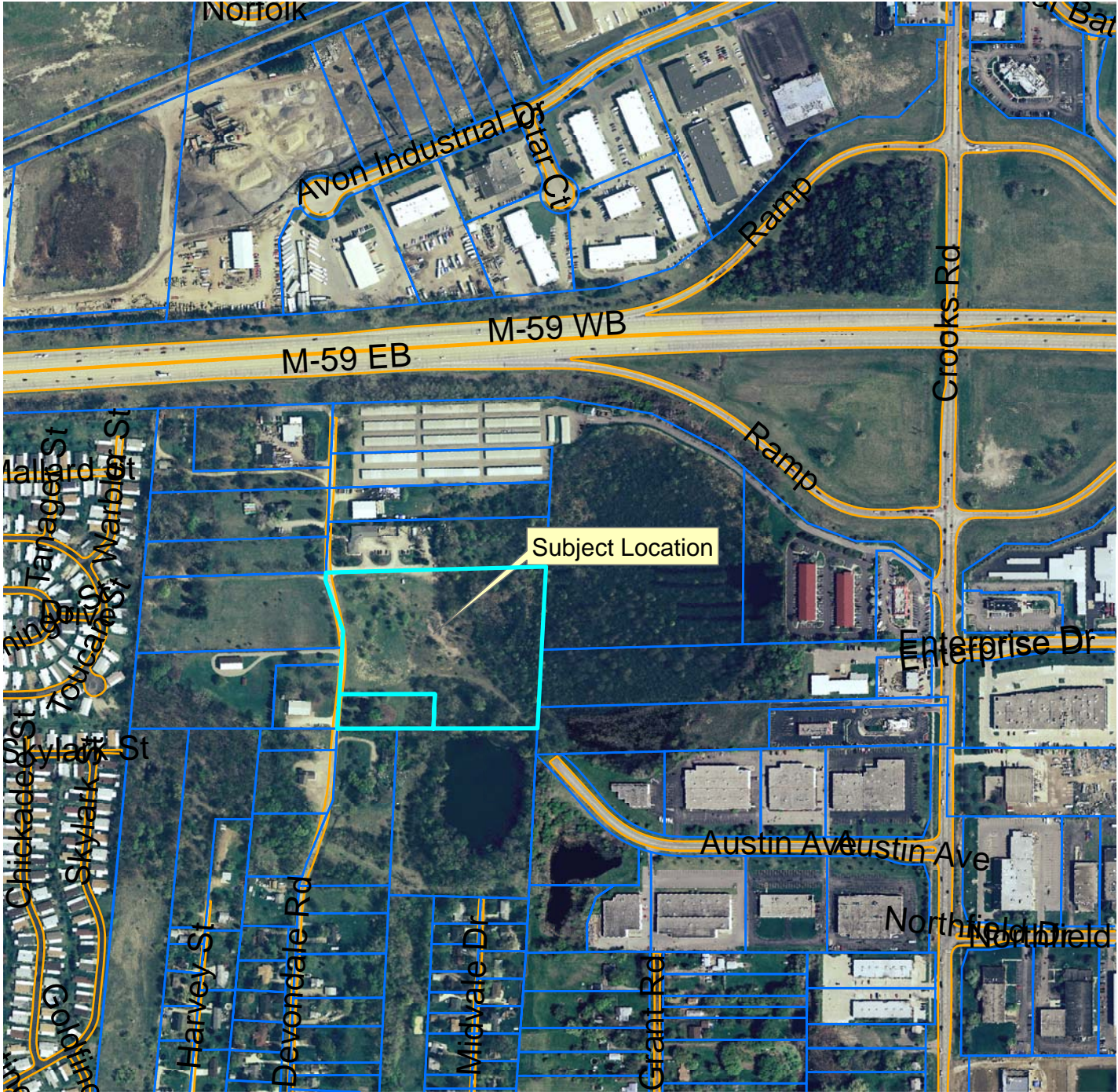


Rayconnect, Inc. Industrial Building

City File No. 08-002



Legend

- TaxParcel
- RoadEdge

Aerial photographs as of April 2005
Parcel lines were obtained on 07-01-08 from Oakland County
Although the information provided by this map is believed to
be reliable, its accuracy is not warranted in any way. The City of
Rochester Hills assumes no liability for any claims arising
from the use of this map.

08-08-07

1 inch equals 549 feet