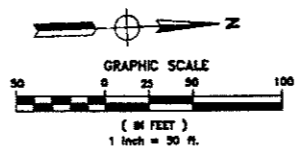
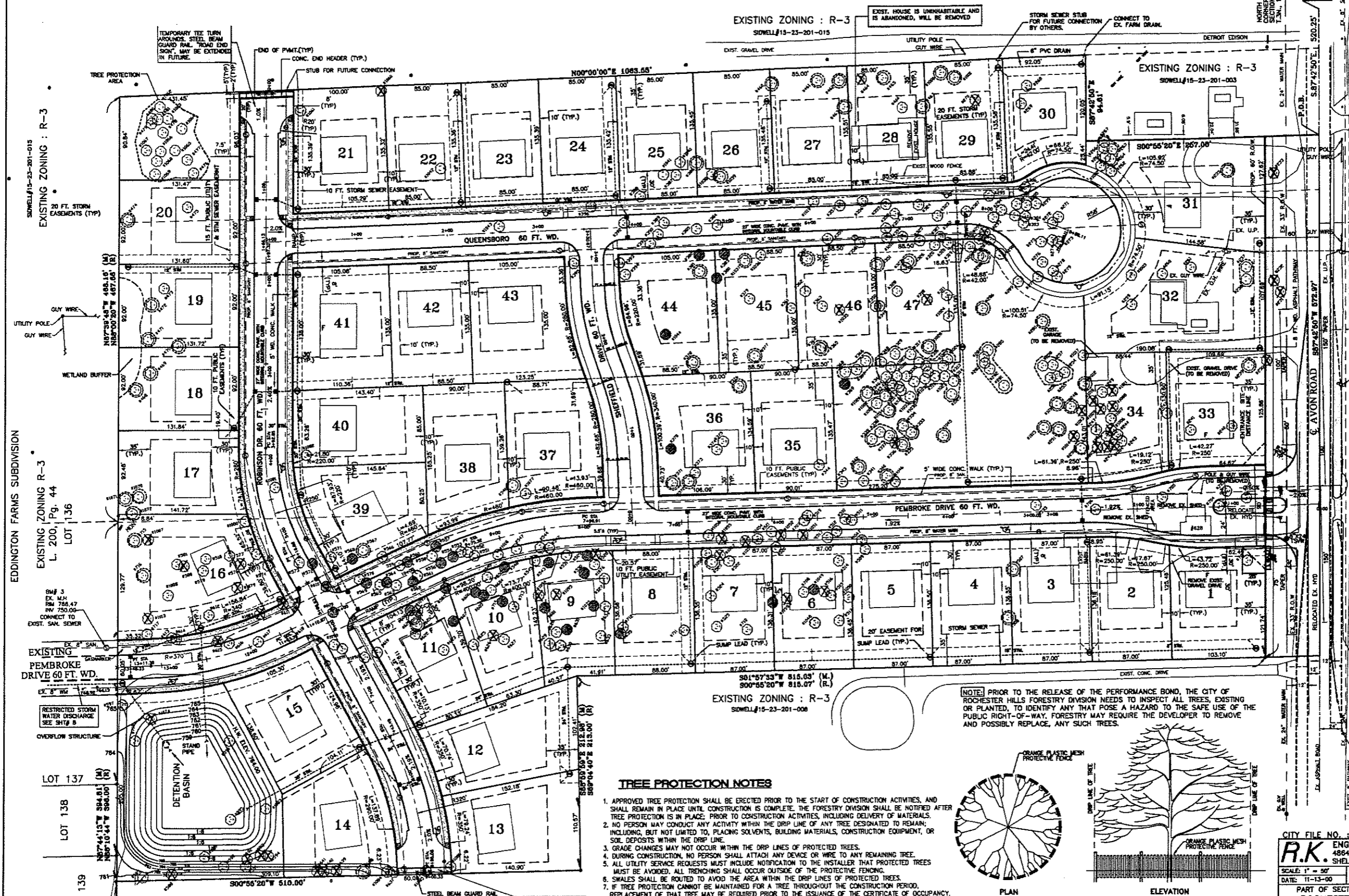
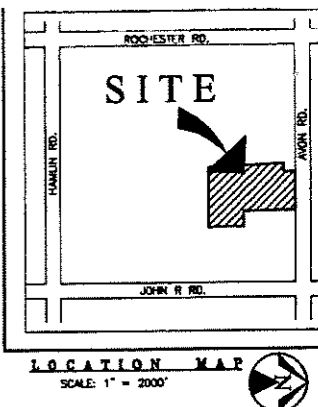


3 WORKING DAYS
BEFORE YOU DIG
CALL MISS DING
1-800-483-7171

"THIS DRAWING NOT TO BE
USED FOR CONSTRUCTION"



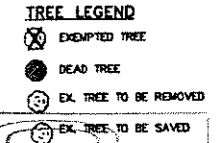
ROCHESTER MEADOWS SUBDIVISION
53 LOTS SINGLE FAMILY SUBDIVISION
PART OF THE N.E. 1/4, SEC. 23, T.3N., R.11E.,
CITY OF ROCHESTER HILLS, OAKLAND COUNTY, MICHIGAN



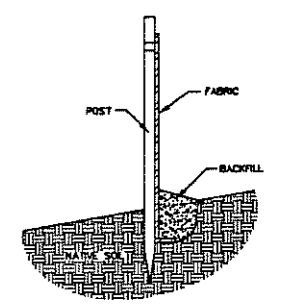
- ALL TREES BEING RETAINED WILL BE IDENTIFIED BY APPROVED METHOD.
- WHEN PROTECTIVE BARRIERS ARE NECESSARY, THEY WILL BE ERCTED BEFORE WORK STARTS.
- THE TREES WILL CONFORM TO THE GUIDELINES ESTABLISHED IN THE MOST RECENT EDITION OF THE AMERICAN STANDARD FOR NURSERY STOCK AND MUST BE APPROVED BY THE CITY PRIOR TO PLANTING.
- REPLACEMENT AND RELOCATED TREES MUST BE STAKED, FERTILIZED AND MULCHED, AND SHALL BE GUARANTEED BY THE TREE REMOVAL PERMIT HOLDER TO EXHIBIT A NORMAL GROWTH CYCLE FOR AT LEAST ONE (1) YEAR FOLLOWING PLANTING.

TREE DATA

TOTAL NUMBER OF TREES:	393
NUMBER OF ASH TREES EXEMPTED:	44
TREES IN AVON ROAD R.O.W. (EXEMPTED):	4
DEAD TREES:	45
TOTAL NUMBER OF EXEMPTED OR DEAD TREES:	93
TOTAL NUMBER OF REGULATED TREES:	300
NUMBER OF TREES TO BE REMOVED:	178
NUMBER OF TREES TO BE SAVED:	122 = 40.666%

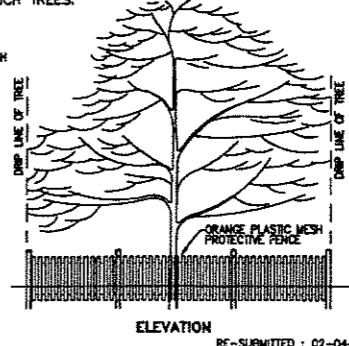
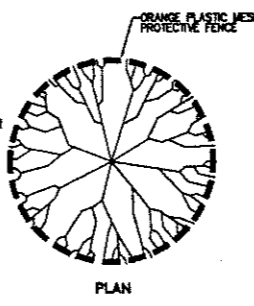


RECEIVE
MAY 21 2004
ROCHESTER HILLS
PLANNING DEPT.



TREE PROTECTION NOTES

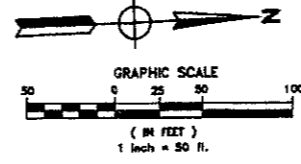
1. APPROVED TREE PROTECTION SHALL BE ERCTED PRIOR TO THE START OF CONSTRUCTION ACTIVITIES, AND SHALL REMAIN IN PLACE UNTIL CONSTRUCTION IS COMPLETE. THE FORESTRY DIVISION SHALL BE NOTIFIED AFTER TREE PROTECTION IS IN PLACE; PRIOR TO CONSTRUCTION ACTIVITIES, INCLUDING DELIVERY OF MATERIALS.
2. NO PERSON MAY CONDUCT ANY ACTIVITY WITHIN THE DRIP LINE OF ANY TREE DESIGNATED TO REMAIN, INCLUDING, BUT NOT LIMITED TO, PLACING SOLVENTS, BUILDING MATERIALS, CONSTRUCTION EQUIPMENT, OR SOIL DEPOSITS WITHIN THE DRIP LINE.
3. GRADE CHANGES MAY NOT OCCUR WITHIN THE DRIP LINES OF PROTECTED TREES.
4. DURING CONSTRUCTION, NO PERSON SHALL ATTACH ANY DEVICE OR WIRE TO ANY REMAINING TREE.
5. ALL UTILITY SERVICE REQUESTS MUST INCLUDE NOTIFICATION TO THE INSTALLER THAT PROTECTED TREES MUST BE AVOIDED. ALL TRENCHING SHALL OCCUR OUTSIDE OF THE PROTECTIVE FENCING.
6. SWALES SHALL BE ROUTED TO AVOID THE AREA WITHIN THE DRIP LINES OF PROTECTED TREES.
7. IF TREE PROTECTION CANNOT BE MAINTAINED FOR A TREE THROUGHOUT THE CONSTRUCTION PERIOD, REPLACEMENT OF THAT TREE MAY BE REQUIRED PRIOR TO THE ISSUANCE OF THE CERTIFICATE OF OCCUPANCY.
8. REGULATED TREE LOCATED ON ADJACENT PROPERTY THAT MAY BE AFFECTED BY CONSTRUCTION ACTIVITIES MUST BE PROTECTED.



CITY FILE NO. : 99-071
R.K. ENGINEERING & SURVEYING ASSOCIATES, INC.
48645 VAN DYKE TEL: (810) 254-2080
SHELBY TWP., MICHIGAN 48317 FAX: (810) 739-5944
DATE: 11-13-00 PRELIMINARY SITE PLAN DRAWN BY: C.C.
RE-SUBMITTED: 02-04-03
RE-SUBMITTED: 09-19-02
RE-SUBMITTED: 08/12/02
PART OF SECTION 23, T.3N., R.11E., CITY OF ROCHESTER HILLS,
ROCHESTER MEADOWS SUBDIVISION AVON ROAD
CLIENT: ROCHESTER MEADOWS, LLC
DRAWING NO.

ROCHESTER MEADOWS SUBDIVISION

53 LOTS SINGLE FAMILY SUBDIVISION
PART OF THE N.E. 1/4, SEC. 23, T.3N., R.11E.,
CITY OF ROCHESTER HILLS, OAKLAND COUNTY, MICHIGAN

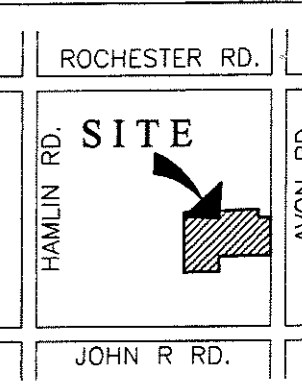
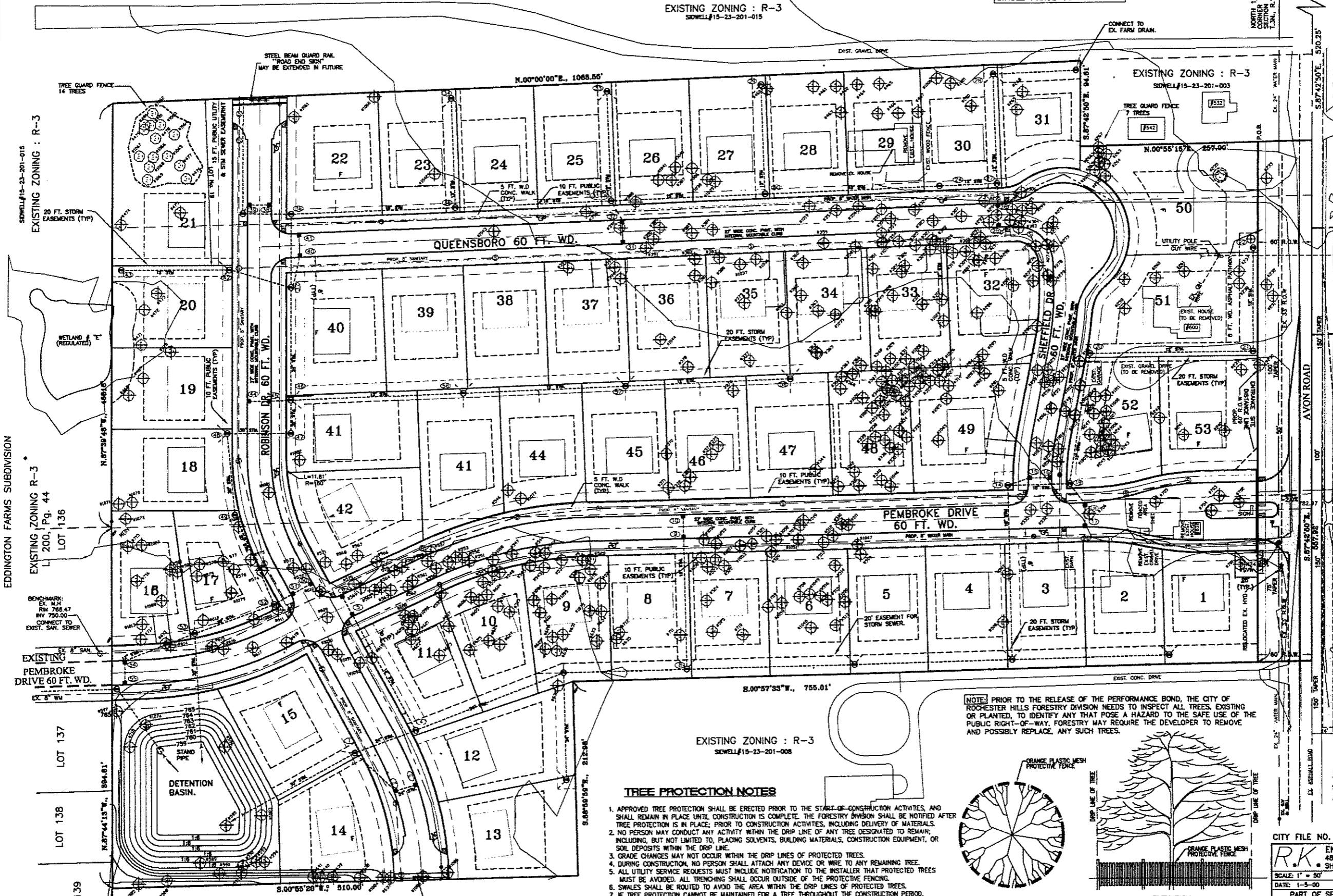


THIS PROJECT WILL BE A SINGLE PHASE CONSTRUCTION

EXISTING ZONING : R-3
SOWELL#15-23-201-015

- ALL TREES BEING RETAINED WILL BE IDENTIFIED BY APPROVED METHOD.
- WHEN PROTECTIVE BARRIERS ARE NECESSARY, THEY WILL BE ERECTED BEFORE WORK STARTS.
- THE TREES WILL CONFORM TO THE GUIDELINES ESTABLISHED IN THE MOST RECENT EDITION OF
- THE AMERICAN STANDARD FOR NURSERY STOCK, AND MUST BE APPROVED BY THE CITY PRIOR TO PLANTING.
- REPLACEMENT AND RELOCATED TREES MUST BE STAKED, FERTILIZED AND MULCHED, AND SHALL BE GUARANTEED BY THE TREE REMOVAL PERMIT HOLDER TO EXHIBIT A NORMAL GROWTH CYCLE FOR AT LEAST ONE (1) YEAR FOLLOWING PLANTING.

3 WORKING DAYS BEFORE YOU DIG CALL MISS DIG 1-800-482-7171

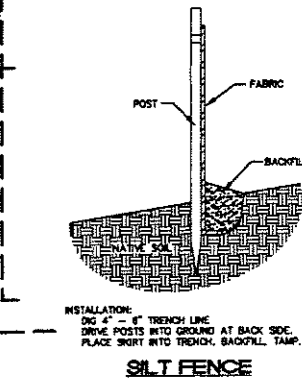


LOCATION MAP
SCALE: 1" = 2000'

- LEGEND**
- ⊕ SYMBOLIZES REGULATED TREES TO BE SAVED
 - ⊗ SYMBOLIZES REGULATED TREES TO BE REMOVED
 - ⊙ SYMBOLIZES DEAD/EXEMPT TREES
 - ⊕ SYMBOLIZES DEAD/EXEMPT TREES TO BE REPLACED
 - SYMBOLIZES TREE PROTECTION FENCE

TREE DATA:
406 (THIS SITE) + 243 (OFF-SITE) = 649 TOTAL TREES
43 DEAD TREES (THIS SITE) + 3 (OFF-SITE) = 46 DEAD TREES
VERY POOR AMERICAN ELM TREES
POOR AMERICAN ELM TREES
TOTAL EXEMPT TREES = 406 + 243 - 58 = 591
TOTAL TREES SAVED = 15 (THIS SITE) + 210 (OFF-SITE) = 225
REQUIRED SAVED TREES AS PER ORDINANCE 37%
TOTAL PERCENTAGE OF TREES SAVED = 38.07%

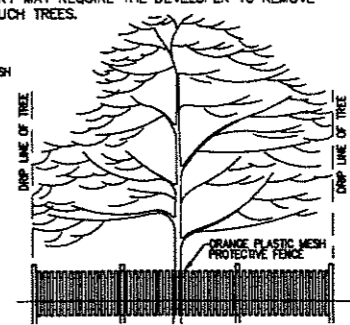
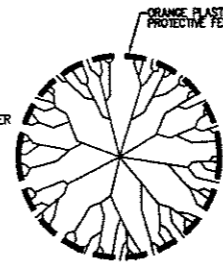
TREE INVENTORY AND CALCULATIONS ARE PROVIDED BY "MIKE'S TREE SURGEONS."
SEE SHET No. 3 AND 4 FOR TREE LISTING AND 10 FOR OFF-SITE TREE LISTING



TREE PROTECTION NOTES

1. APPROVED TREE PROTECTION SHALL BE ERECTED PRIOR TO THE START-OF CONSTRUCTION ACTIVITIES, AND SHALL REMAIN IN PLACE UNTIL CONSTRUCTION IS COMPLETE. THE FORESTRY DIVISION SHALL BE NOTIFIED AFTER TREE PROTECTION IS IN PLACE; PRIOR TO CONSTRUCTION ACTIVITIES, INCLUDING DELIVERY OF MATERIALS.
2. NO PERSON MAY CONDUCT ANY ACTIVITY WITHIN THE DRIP LINE OF ANY TREE DESIGNATED TO REMAIN; INCLUDING, BUT NOT LIMITED TO, PLACING SOLVENTS, BUILDING MATERIALS, CONSTRUCTION EQUIPMENT, OR SOIL DEPOSITS WITHIN THE DRIP LINE.
3. GRADE CHANGES MAY NOT OCCUR WITHIN THE DRIP LINES OF PROTECTED TREES.
4. DURING CONSTRUCTION, NO PERSON SHALL ATTACH ANY DEVICE OR WIRE TO ANY REMAINING TREE.
5. ALL UTILITY SERVICE REQUESTS MUST INCLUDE NOTIFICATION TO THE INSTALLER THAT PROTECTED TREES MUST BE AVOIDED. ALL TRENCHING SHALL OCCUR OUTSIDE OF THE PROTECTIVE FENCING.
6. SWALES SHALL BE ROUTED TO AVOID THE AREA WITHIN THE DRIP LINES OF PROTECTED TREES.
7. IF TREE PROTECTION CANNOT BE MAINTAINED FOR A TREE THROUGHOUT THE CONSTRUCTION PERIOD, REPLACEMENT OF THAT TREE MAY BE REQUIRED PRIOR TO THE ISSUANCE OF THE CERTIFICATE OF OCCUPANCY.
8. REGULATED TREE LOCATED ON ADJACENT PROPERTY THAT MAY BE AFFECTED BY CONSTRUCTION ACTIVITIES

NOTE: PRIOR TO THE RELEASE OF THE PERFORMANCE BOND, THE CITY OF ROCHESTER HILLS FORESTRY DIVISION NEEDS TO INSPECT ALL TREES, EXISTING OR PLANTED, TO IDENTIFY ANY THAT POSE A HAZARD TO THE SAFE USE OF THE PUBLIC RIGHTS-OF-WAY. FORESTRY MAY REQUIRE THE DEVELOPER TO REMOVE AND POSSIBLY REPLACE, ANY SUCH TREES.



CITY FILE NO. : 99-011
R.K. ENGINEERING & SURVEYING ASSOCIATES, INC.
4845 VAN DYKE TEL: (810) 254-20
SHELBY TWP., MICHIGAN 48317 FAX: (810) 739-59
SCALE: 1" = 50' TREE PRESERVATION PLAN DRAWN BY: C.C.
DATE: 1-5-00 REV. JOB# 99-200
PART OF SECTION 23, T.3N., R.11E., CITY OF ROCHESTER HILLS, ROCHESTER MEADOWS SUBDIVISION AVON ROAD