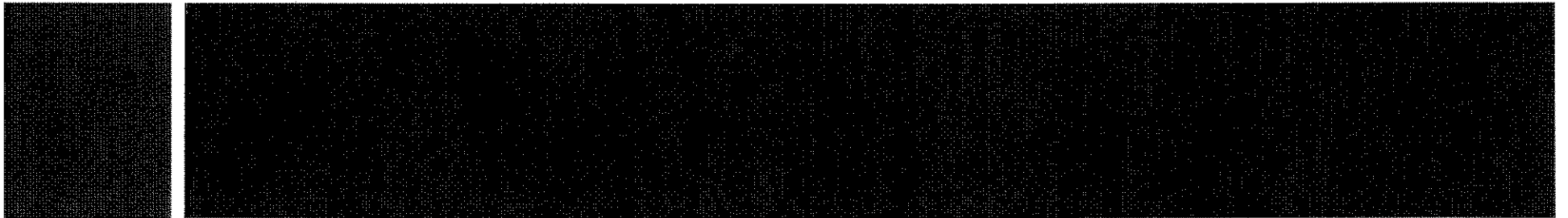


# Rochester Road Access Management Plan



# What is SEMCOG?

---

SEMCOG, the Southeast Michigan Council of Governments, is a membership organization of 162 local governments in the seven-county southeast Michigan region.

SEMCOG supports local government planning on regional issues in the areas of transportation, community & economic development, the environment, and education.

- Data and technical resources
- Direct assistance to members

# Purpose of Access Management

- ❑ Reduce crashes
- ❑ Improve traffic flow
- ❑ Improve business vitality
- ❑ Preserve road investment
- ❑ Enhance walkability, bikeability, and transit access
- ❑ Improve aesthetics
- ❑ Aid stormwater management



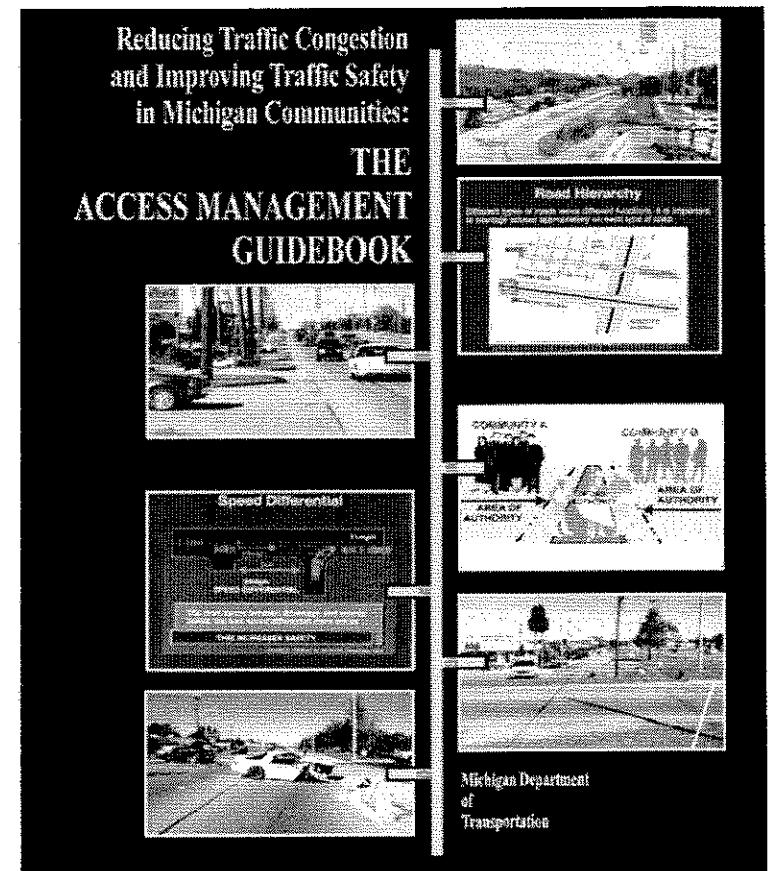
# Why Rochester Road?

---

- Density and growth
- Traffic volumes/congestion
- Traffic crashes
- You asked

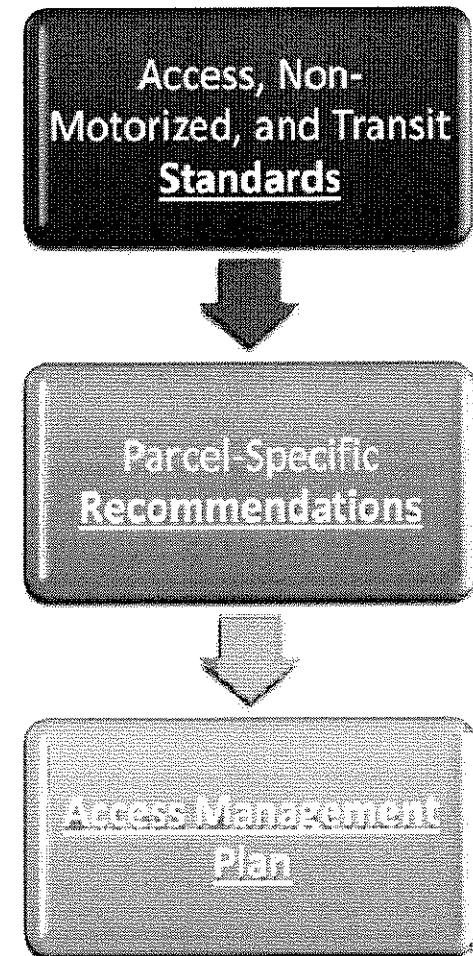
# The MDOT Access Management Guidebook

- ❑ MDOT Access Management Task Force
- ❑ Based on numerous studies in other states
- ❑ National research and publications
- ❑ Experience of many Michigan communities
- ❑ Numerous MDOT Access Management Plans completed in partnership with communities



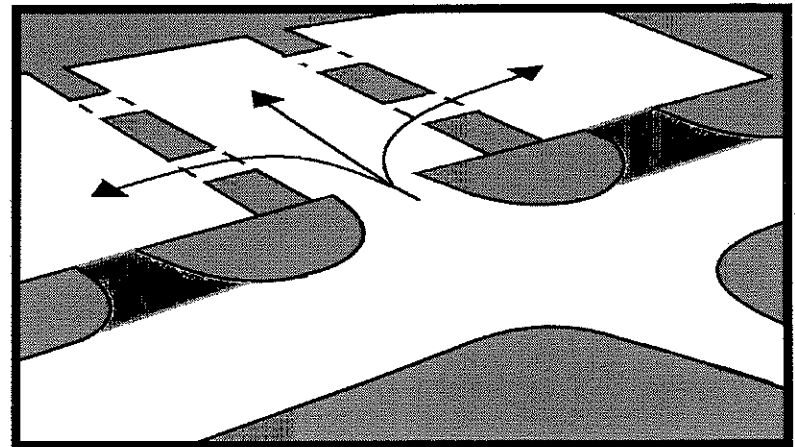
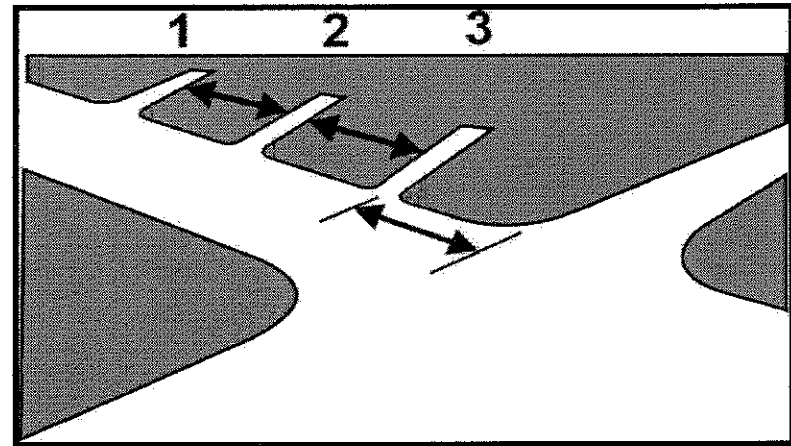
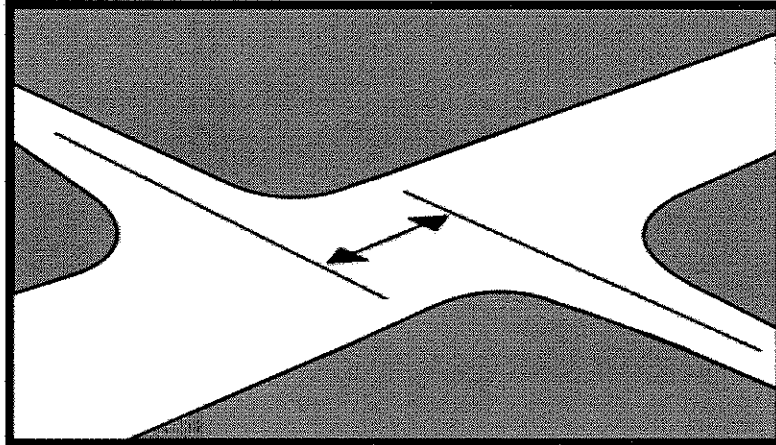
# Outcomes

- Access Management Plan
  - Incorporated into City's Master Plan
  - Supports zoning regulations
  - General guidelines with parcel-specific recommendations
- Zoning Ordinance
  - Consistent standards
  - Flexibility allowed by community when appropriate



# Access Standards

- Spacing
- Offsets
- Shared access



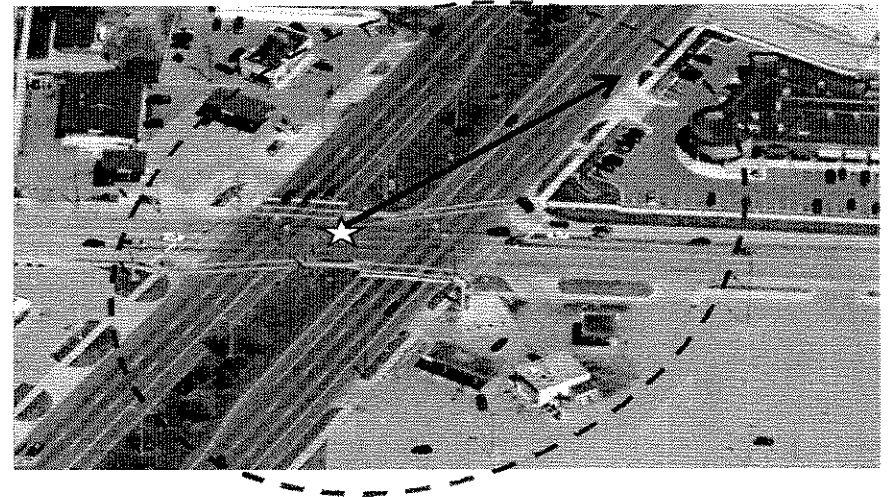
# Types of Access Recommendations

- ❑ Close/consolidate driveways
- ❑ Connect parking areas
- ❑ Redesign driveways/parking areas
- ❑ Front or rear service drives/connections
- ❑ Intersection improvements
- ❑ Integrate with walking/biking & transit
- ❑ Consider low-impact development techniques

## DEVELOPING RECOMMENDATIONS:

### What Do We Look For?

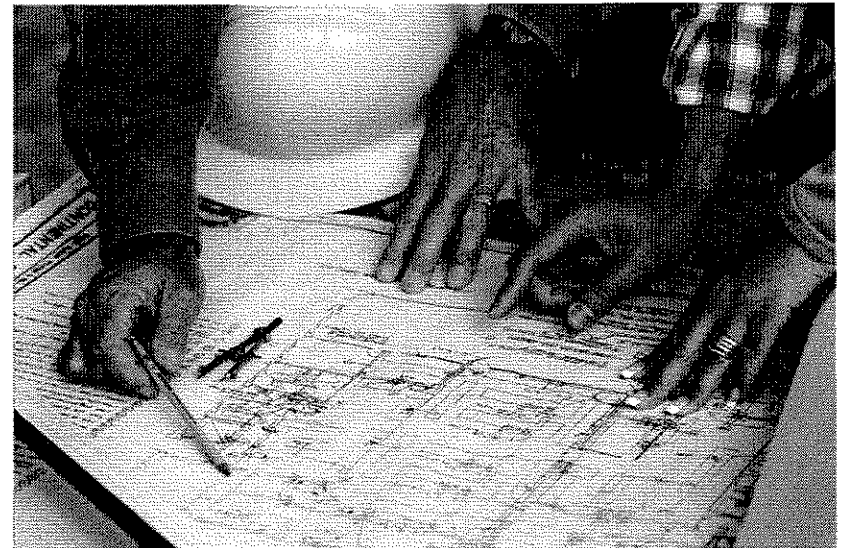
- ❑ Driveways near signalized intersections
- ❑ Poorly spaced or offset driveways
- ❑ Driveways nearest to cross-streets
- ❑ Access points near high crash segments





# When are the Plan Recommendations Applied?

- Changes in property status: as businesses redevelop or expand
- Local initiatives: partnerships with DDA, Corridor Improvement Authority, grants
- Road construction projects: coordinated between road agencies and property owners



# SEMCOG Role/Community Expectations

---

- SEMCOG role
  - Fund project; retain consultant
  - Provide project oversight
- Community expectations
  - Sign MOU
  - Actively participate on Steering Committee
  - Adopt master plan and zoning ordinance
  - Coordinate implementation

# Timeline

