

CITY OF ROCHESTER HILLS NOTES:

IMPORTANT:
ALL TREES ON ADJACENT PROPERTIES MUST BE PROTECTED. THE TREE PROTECTIVE FENCING MAY BE PLACED ALONG THE ACTUAL PROPERTY LINE IF THE BRANCHES OF THE TREES ON THE ADJACENT PROPERTIES DO NOT OVERHANG ONTO THE SITE BEING DEVELOPED. IF THE BRANCHES OVERHANG ONTO THE AREA OF THE SITE BEING DEVELOPED, THE TREE PROTECTIVE FENCING MUST BE PLACED ON THE DEVELOPMENT SIDE OF THE TREE PROTECTIVE FENCING. THE SILT FENCING MAY NOT BE PLACED BETWEEN THE TREE BEING PRESERVED AND THE TREE PROTECTIVE FENCING. IF ANY REGULATED TREES ARE MANAGED ON THE ADJACENT PROPERTIES, THE DAMAGED TREES WILL BE EITHER REPLACED ON THE OWNER'S PROPERTY ON AN INCH FOR INCH BASIS OR A FINE IN THE SUM OF \$122.00 PER CALIPER INCH WILL BE ISSUED AGAINST THE DEVELOPMENT. THIS FINE WILL BE DUE PRIOR TO BUILDING PERMITS BEING ISSUED. IF YOU HAVE ANY QUESTIONS OR NEED ADDITIONAL INFORMATION, CALL THE CITY'S PLANNING DEPARTMENT AT 248-656-4660.

TREE PROTECTION NOTES:

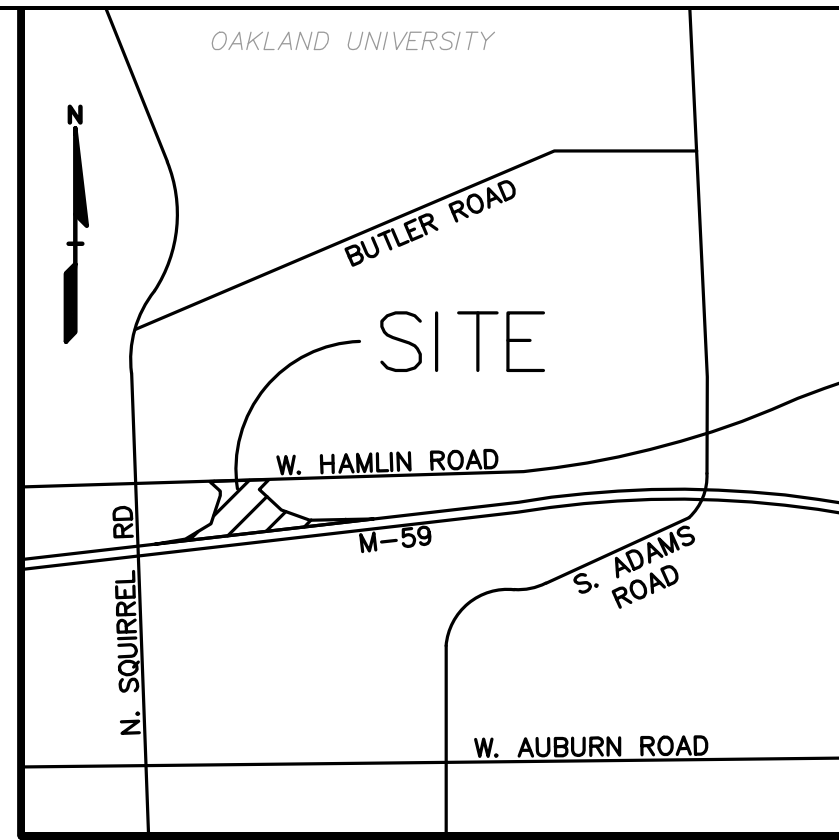
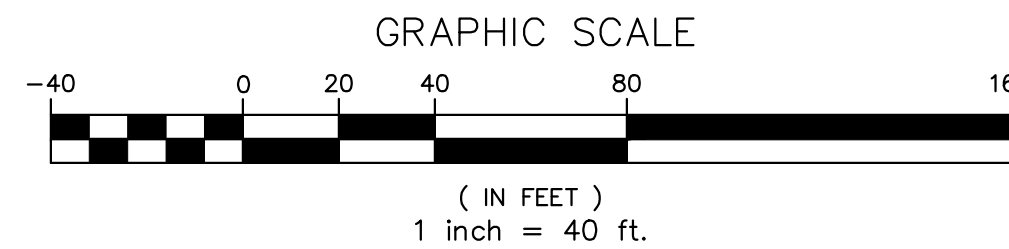
- The tree protection fencing (TPF) shall be erected per the plans approved by the City of Rochester Hills Planning Department. The TPF must be in place and be inspected by the City of Rochester Hills' Planning Staff prior to the start of any earthwork or construction operations. It is the developer's responsibility to contact the City Planning Department at 248-656-4660 to schedule a TPF inspection. The TPF shall remain in place throughout the entire construction process or until the City authorizes the removal or issues a final Certificate of Occupancy, whichever occurs first.
- Upon completion of grading and the installation of the infrastructure, a second inspection of the TPF and the trees designated for preservation is required by the City of Rochester Hills' Forester prior to the start of any additional construction. It is the developer's responsibility to contact the City Planning Department at 248-656-4660 to schedule this TPF inspection.
- A final inspection by the City of Rochester Hills Planning Staff is required at the end of the warranty and maintenance period. The Landscape Maintenance Bond will not be released until this inspection is complete and all related issues are resolved. It is the developer's responsibility to contact the City Planning Department at 248-656-4660 to schedule this inspection.
- The Tree Conservation Ordinance prohibits any construction or development activities within the drip line of any regulated trees not approved for removal, including, but not limited to, land clearing, grubbing, trenching, grading or filling; no person shall place any solvents, building material, construction equipment, soil deposits or harmful materials within the drip line limit of trees designated for preservation.
- Proposed grades are to match the existing elevations outside the limits of the TPF. No grading either cut or fill is permitted within the drip line of any tree designated for preservation.
- During the construction process no person shall attach any device or wire/cable/card/rope to an existing tree designated to be preserved.
- All utility service requests must include notification to the installer that protected trees must be avoided. All trenching shall occur outside the TPF.
- Swales shall be routed to avoid the area within the drip line of the only tree designated for preservation. Swales shall be constructed so as to not direct any additional flow into the drip line of a tree designated for preservation.
- If tree protection cannot be maintained for a tree throughout entire period required, the replacement of that tree will be required on an inch for inch basis prior to the issuance of any Certificate of Occupancy.
- Regulated trees located off-site on adjacent properties that may be affected by construction operations must be protected defined herein.
- The TPF shall consist of four-foot high orange snow fencing to be installed around the drip line of all trees designated to be saved. This fencing shall be supported by six-foot metal T-bar posts five-foot on center and driven a minimum of 24" into the ground. The TPF fencing shall remain upright and securely in place for the required time as specified above.
- Prior the release of the Performance Bond, the City of Rochester Hills Forestry Division needs to inspect all trees existing or planted, to identify any that pose a hazard to the safe use of the public right-of-way. Forestry may require the developer to remove and possibly replace any such trees.

REGULATED ON SITE TREES	
REGULATED TREES REMOVED:	236
SPECIMEN TREES REMOVED:	0
DBH OF SPECIMEN TREES REMOVED:	0 INCHES = 0 REPLACEMENT TREES
SPECIMEN TREES TO REMAIN ON-SITE:	12 TREES
REPLACEMENT REQUIRED:	236+0-12=224 TREES (2" DECIDUOUS OR 8" EVERGREEN)

TOTAL TREES ON SITE:	365
EXEMPT TREES IN BUILDING:	47
TREES TO REMAIN ON SITE:	129
% TREES TO REMAIN:	(129)/(365-47) = 40.6%

NOTE: OFFSITE TREES ON TREE LIST ARE NOT INCLUDED IN PRESERVATION PERCENTAGE.

TREES THAT ARE COUNTED TOWARDS THE TYPE B BUFFER ZONE ARE LABELED "BUFFER" UNDER THE NOTES COLUMN.

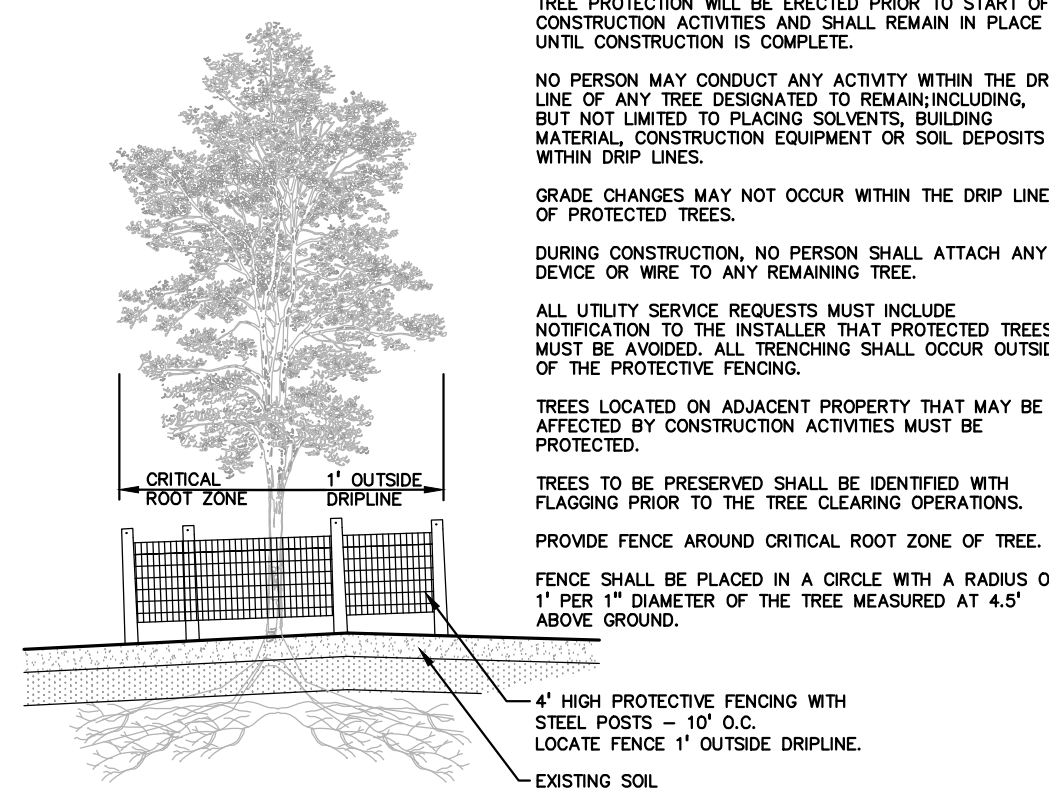


LOCATION MAP - NOT TO SCALE

KEY:

- (+4872) = EXISTING TREE / TAG TO REMAIN WITH TREE PROTECTION FENCING
- (+4872) = EXISTING TREE / TAG TO BE REMOVED
- (+4872) = EXISTING OFFSITE TREE TO REMAIN

TREE REPLACEMENT CALCULATIONS
PER CITY OF ROCHESTER HILLS ZONING ORDINANCE
REPLACEMENT TREES:
REQUIRED: 1, 2" DEC. TREE OR 8" EVO PER REGULATED TREE REMOVED.
2" TREE REPLACEMENT CREDIT FOR EACH SPECIMEN TREE PRESERVED.
236 REGULATED TREES REMOVED - 12 SPECIMEN TREES PRESERVED = 224 REPLACEMENT TREES
SEE SHEET L-1-0 FOR TREE REPLACEMENTS



TREE PROTECTION DETAIL
NOT TO SCALE



CAUTION!!
THE LOCATIONS AND ELEVATIONS OF EXISTING UNDERGROUND UTILITIES AS SHOWN ON THIS DRAWING ARE ONLY APPROXIMATE. NO GUARANTEE IS EITHER EXPRESSED OR IMPLIED AS TO THE COMPLETENESS OR ACCURACY THEREOF. THE CONTRACTOR SHALL BE EXCLUSIVELY RESPONSIBLE FOR DETERMINING THE EXACT LOCATION AND ELEVATIONS PRIOR TO THE START OF CONSTRUCTION.

THIS DRAWING AND DESIGN ARE THE PROPERTY OF PEA, INC. THEY ARE SUBMITTED ON THE CONDITION THAT THEY ARE NOT TO BE USED, REPRODUCED, OR COPIED, IN WHOLE OR IN PART, OR USED FOR FURNISHING INFORMATION TO OTHERS, WITHOUT THE PRIOR WRITTEN CONSENT OF PEA, INC. ALL COMMON LAW RIGHTS OF COPYRIGHT AND OTHERWISE ARE HEREBY SPECIFICALLY RESERVED. © 2019 PEA, INC.

CONSTRUCTION CONTRACTOR AGREES THAT IN ACCORDANCE WITH GENERALLY ACCEPTED CONSTRUCTION PRACTICES, CONSTRUCTION CONTRACTOR WILL BE REQUIRED TO ASSUME SOLE AND COMPLETE RESPONSIBILITY FOR JOB SITE CONDITIONS DURING THE COURSE OF CONSTRUCTION OF THE PROJECT, INCLUDING SAFETY OF ALL PERSONS AND PROPERTY, THAT THIS REQUIREMENT SHALL BE MADE TO APPLY TO ALL CONTRACTORS AND SHALL BE TO NORMAL WORKING HOURS AND CONSTRUCTION CONTRACTOR FURTHER AGREES TO MAINTAIN NEARBY AND HOLD DESIGN PROFESSIONAL HARMLESS FROM ANY AND ALL LIABILITY, REAL OR ALLEGED, IN CONNECTION WITH THE PERFORMANCE OF WORK ON THIS PROJECT EXCEPTING LIABILITY ARISING FROM THE SOLE NEGLIGENCE OF THE DESIGN PROFESSIONAL.

3 FULL WORKING DAYS BEFORE YOU DIG CALL 811
Know what's Below
Call before you dig
Miss Dig System, Inc.
1-800-482-7171 www.missdig.net



PEA, Inc.
2430 Rochester Ct, Ste 100
Troy, MI 48063-1872
t: 248.689.9090
f: 248.689.1044
www.peainc.com

HILLSIDE INVESTMENTS
38475 13 MILE ROAD, SUITE 203
NOVI, MI 48077
TREE SURVEY PLAN
HILLSIDE ROCHESTER HILLS
PART OF THE NW 1/4 OF SECTION 30, T.03 N., R.11 E.,
CITY OF ROCHESTER HILLS, OAKLAND COUNTY, MICHIGAN

ORIGINAL ISSUE DATE:
OCTOBER 24, 2019

PEA JOB NO. 2019-238

SCALE: 1" = 40'

DRAWING NUMBER:

T-1.0

CITY FILE #19-040, SECTION 30

NOT FOR CONSTRUCTION

XREF: S:\PROJECTS\2019\2019238\DWG\19238-TOPOBASE.DWG
XREF: S:\PROJECTS\2019\2019238\DWG\SITEPLANS\X-BASE-19238.DWG
XREF: S:\PROJECTS\2019\2019238\DWG\SITEPLANS\X-TBLK-19238.DWG

TAG NO.	CODE	DBH	COMMON NAME	LATIN NAME	CONDITION	NOTES	SPECIMEN	SAVE / REMOVE	OFFSITE? IN BUILDING
2501	MW	8	White Mulberry	Morus alba	Fair	x1	N	R	N
2502	MW	9	White Mulberry	Morus alba	Poor	x3	N	R	N
2503	BL	7	Black Locust	Robinia pseudoacacia	Fair	x1	N	R	N
2504	BL	8	Black Locust	Robinia pseudoacacia	Fair		N	R	N
2505	BL	10	Black Locust	Robinia pseudoacacia	Fair	x1	N	R	N
2506	BL	7	Black Locust	Robinia pseudoacacia	Fair		N	R	N
2507	BL	9	Black Locust	Robinia pseudoacacia	Poor	x1	N	R	N
2508	BL	6	Black Locust	Robinia pseudoacacia	Poor		N	R	N
2509	BL	6	Black Locust	Robinia pseudoacacia	Poor		N	R	N
2510	BL	7	Black Locust	Robinia pseudoacacia	Poor		N	R	N
2511	BL	6	Black Locust	Robinia pseudoacacia	Fair		N	R	N
2512	BL	6	Black Locust	Robinia pseudoacacia	Poor		N	R	N
2513	BL	7	Black Locust	Robinia pseudoacacia	Poor		N	R	N
2514	BL	6	Black Locust	Robinia pseudoacacia	Poor		N	R	N
2515	BL	6	Black Locust	Robinia pseudoacacia	Poor		N	R	N
2516	BL	6	Black Locust	Robinia pseudoacacia	Fair		N	R	N
2517	BL	7	Black Locust	Robinia pseudoacacia	Poor		N	R	N
2518	BL	6	Black Locust	Robinia pseudoacacia	Fair		N	R	N
2519	BL	6	Black Locust	Robinia pseudoacacia	Fair		N	R	N
2520	BL	6	Black Locust	Robinia pseudoacacia	Poor		N	R	N
2521	BL	6	Black Locust	Robinia pseudoacacia	Fair		N	R	N
2522	BL	7	Black Locust	Robinia pseudoacacia	Poor		N	R	N
2523	BL	8	Black Locust	Robinia pseudoacacia	Poor		N	R	N
2524	BL	8	Black Locust	Robinia pseudoacacia	Poor		N	R	N
2525	BL	8	Black Locust	Robinia pseudoacacia	Poor	x1	N	R	N
2526	BL	7	Black Locust	Robinia pseudoacacia	Fair		N	R	N
2527	BL	8	Black Locust	Robinia pseudoacacia	Poor		N	R	N
2528	BL	21	Black Locust	Robinia pseudoacacia	Fair	x1	N	R	N
2529	BL	11	Black Locust	Robinia pseudoacacia	Poor	x2	N	R	N
2530	BL	14	Black Locust	Robinia pseudoacacia	Fair		N	R	N
2531	BL	12	Black Locust	Robinia pseudoacacia	Fair		N	R	N
2532	BL	8	Black Locust	Robinia pseudoacacia	Poor		N	R	N
2533	BL	12	Black Locust	Robinia pseudoacacia	Poor		N	R	N
2534	BL	6	Black Locust	Robinia pseudoacacia	Fair		N	R	N
2535	BL	9	Black Locust	Robinia pseudoacacia	Poor		N	R	N
2536	BL	11	Black Locust	Robinia pseudoacacia	Poor		N	R	N
2537	BL	11	Black Locust	Robinia pseudoacacia	Poor		N	R	N
2538	BL	8	Black Locust	Robinia pseudoacacia	Poor		N	R	N
2539	BL	14	Black Locust	Robinia pseudoacacia	Poor		N	R	N
2540	BL	7	Black Locust	Robinia pseudoacacia	Poor		N	R	N
2541	BL	6	Black Locust	Robinia pseudoacacia	Poor		N	R	N
2542	BL	6	Black Locust	Robinia pseudoacacia	Fair		N	R	N
2543	BL	7	Black Locust	Robinia pseudoacacia	Fair		N	R	N
2544	BL	7	Black Locust	Robinia pseudoacacia	Poor		N	R	N
2545	BL	7	Black Locust	Robinia pseudoacacia	Poor	x1	N	R	N
2546	BL	12	Black Locust	Robinia pseudoacacia	Poor		N	R	N
2547	BL	6	Black Locust	Robinia pseudoacacia	Poor		N	R	N
2548	BL	7	Black Locust	Robinia pseudoacacia	Fair		N	R	N
2549	BL	7	Black Locust	Robinia pseudoacacia	Fair		N	R	N
2550	BL	6	Black Locust	Robinia pseudoacacia	Fair		N	R	N
2551	BL	7	Black Locust	Robinia pseudoacacia	Fair		N	R	N
2552	BL	6	Black Locust	Robinia pseudoacacia	Fair	x2	N	R	N
2553	BL	9	Black Locust	Robinia pseudoacacia	Poor	x2	N	R	N
2554	BL	14	Black Locust	Robinia pseudoacacia	Fair		N	S	N
2555	BL	15	Black Locust	Robinia pseudoacacia	Poor		N	S	N
2556	BL	7	Black Locust	Robinia pseudoacacia	Fair		N	R	N
2557	BL	8	Black Locust	Robinia pseudoacacia	Poor		N	R	N
2558	BL	13	Black Locust	Robinia pseudoacacia	Poor		N	R	N
2559	BL	11	Black Locust	Robinia pseudoacacia</					

AQ. NO.	CODE	DBH	COMMON NAME	LATIN NAME	CONDITION	NOTES	SPECIMEN	SAVE / REMOVE	OFFSITE?	IN BUILDING
2660	BL	15	Black Locust	Robinia pseudoacacia	Poor		N	R	N	N
2661	BL	9	Black Locust	Robinia pseudoacacia	Fair		N	R	N	N
2662	BL	16	Black Locust	Robinia pseudoacacia	Poor		N	R	N	N
2663	BL	12	Black Locust	Robinia pseudoacacia	Poor		N	R	N	N
2664	BL	14	Black Locust	Robinia pseudoacacia	Fair		N	R	N	N
2665	BL	13	Black Locust	Robinia pseudoacacia	Fair		N	R	N	N
2666	BL	9	Black Locust	Robinia pseudoacacia	Poor		N	R	N	N
2667	BL	11	Black Locust	Robinia pseudoacacia	Poor		N	R	N	N
2668	BL	9	Black Locust	Robinia pseudoacacia	Fair	x1	N	R	N	N
2669	BL	8	Black Locust	Robinia pseudoacacia	Fair		N	R	N	N
2670	BL	16	Black Locust	Robinia pseudoacacia	Fair		N	R	N	N
2671	BL	7	Black Locust	Robinia pseudoacacia	Fair		N	R	N	Y
2672	BL	7	Black Locust	Robinia pseudoacacia	Fair		N	R	N	Y
2673	BL	7	Black Locust	Robinia pseudoacacia	Fair		N	R	N	Y
2674	BL	17	Black Locust	Robinia pseudoacacia	Fair		N	R	N	N
2675	BL	10	Black Locust	Robinia pseudoacacia	Fair		N	R	N	Y
2676	BL	6	Black Locust	Robinia pseudoacacia	Fair		N	R	N	Y
2677	BL	9	Black Locust	Robinia pseudoacacia	Poor		N	R	N	N
2678	BL	6	Black Locust	Robinia pseudoacacia	Fair		N	R	N	Y
2679	BL	9	Black Locust	Robinia pseudoacacia	Poor		N	R	N	N
2680	BL	10	Black Locust	Robinia pseudoacacia	Poor		N	R	N	N
2681	BL	7	Black Locust	Robinia pseudoacacia	Fair		N	R	N	N
2682	BL	8	Black Locust	Robinia pseudoacacia	Fair		N	R	N	N
2683	BL	6	Black Locust	Robinia pseudoacacia	Poor		N	R	N	N
2684	BL	6	Black Locust	Robinia pseudoacacia	Poor		N	R	N	N
2685	BL	8	Black Locust	Robinia pseudoacacia	Poor		N	R	N	N
2686	BL	7	Black Locust	Robinia pseudoacacia	Poor		N	R	N	N
2687	BL	7	Black Locust	Robinia pseudoacacia	Poor		N	R	N	N
2688	BL	10	Black Locust	Robinia pseudoacacia	Fair		N	R	N	N
2689	BL	8	Black Locust	Robinia pseudoacacia	Poor		N	R	N	N
2690	BL	7	Black Locust	Robinia pseudoacacia	Fair		N	R	N	N
2691	BL	9	Black Locust	Robinia pseudoacacia	Poor		N	R	N	N
2692	BL	8	Black Locust	Robinia pseudoacacia	Fair		N	R	N	N
2693	BL	6	Black Locust	Robinia pseudoacacia	Poor		N	R	N	N
2694	BL	6	Black Locust	Robinia pseudoacacia	Poor		N	R	N	N
2695	BL	6	Black Locust	Robinia pseudoacacia	Poor		N	R	N	N
2696	BL	7	Black Locust	Robinia pseudoacacia	Fair		N	R	N	N
2697	BL	8	Black Locust	Robinia pseudoacacia	Poor		N	R	N	N
2698	BL	6	Black Locust	Robinia pseudoacacia	Poor		N	S	N	N
2699	BL	6	Black Locust	Robinia pseudoacacia	Poor		N	S	N	N
2700	BL	6	Black Locust	Robinia pseudoacacia	Fair	BUFFER	N	S	N	N
2701	BL	12	Black Locust	Robinia pseudoacacia	Fair		N	S	N	N
2714	BL	6	Black Locust	Robinia pseudoacacia	Very Poor		N	S	N	N
2715	BL	14	Black Locust	Robinia pseudoacacia	Fair		N	S	N	N
2716	BL	8	Black Locust	Robinia pseudoacacia	Poor		N	S	N	N
2717	BL	14	Black Locust	Robinia pseudoacacia	Poor		N	R	N	N
2718	BL	6	Black Locust	Robinia pseudoacacia	Fair		N	R	N	N
2719	BL	8	Black Locust	Robinia pseudoacacia	Fair		N	R	N	N
2720	BL	10	Black Locust	Robinia pseudoacacia	Fair		N	R	N	N
2721	BL	7	Black Locust	Robinia pseudoacacia	Poor	x1	N	R	N	N
2722	BL	13	Black Locust	Robinia pseudoacacia	Fair	BUFFER	N	S	N	N
2723	BL	15	Black Locust	Robinia pseudoacacia	Poor	x1	N	S	N	N
2724	BL	10	Black Locust	Robinia pseudoacacia	Poor		N	S	N	N
2725	BL	13	Black Locust	Robinia pseudoacacia	Poor		N	R	N	N
2726	BL	11	Black Locust	Robinia pseudoacacia	Poor		N	R	N	N
2727	BL	12	Black Locust	Robinia pseudoacacia	Poor		N	R	N	N
2728	BL	6	Black Locust	Robinia pseudoacacia	Poor		N	R	N	N
2729	BL	16	Black Locust	Robinia pseudoacacia	Poor		N	R	N	N
2730	BL	10	Black Locust	Robinia pseudoacacia	Poor		N	R	N	N
2731	BL	8	Black Locust	Robinia pseudoacacia	Fair		N	R	N	N
2732	BL	16	Black Locust	Robinia pseudoacacia	Poor		N	R	N	N
2733	BL	13	Black Locust	Robinia pseudoacacia	Poor		N	R	N	N
2734	BL	16	Black Locust	Robinia pseudoacacia	Poor		N	R	N	N
2735	BL	9	Black Locust	Robinia pseudoacacia	Poor		N	R	N	N
2736	BL	6	Black Locust	Robinia pseudoacacia	Poor		N	R	N	N
2737	BL	12	Black Locust	Robinia pseudoacacia	Poor		N	R	N	N
2738	BL	8	Black Locust	Robinia pseudoacacia	Poor		N	R	N	N
2739	BL	6	Black Locust	Robinia pseudoacacia	Poor		N	R	N	N
2740	BL	8	Black Locust	Robinia pseudoacacia	Poor		N	R	N	N
2741	BL	7	Black Locust	Robinia pseudoacacia	Poor		N	R	N	N
2742	BL	13	Black Locust	Robinia pseudoacacia	Poor		N	R	N	N
2743	BL	16	Black Locust	Robinia pseudoacacia	Poor		N	R	N	N
2744	BL	16	Black Locust	Robinia pseudoacacia	Poor		N	R	N	N
2745	BL	9	Black Locust	Robinia pseudoacacia	Poor		N	R	N	N
2746	BL	6	Black Locust	Robinia pseudoacacia	Fair		N	R	N	N
2747	BL	14	Black Locust	Robinia pseudoacacia	Poor		N	R	N	N
2748	BL	14	Black Locust	Robinia pseudoacacia	Poor		N	R	N	N
2749	BL	6	Black Locust	Robinia pseudoacacia	Fair		N	R	N	N
2750	BL	8	Black Locust	Robinia pseudoacacia	Poor		N	R	N	N
2751	BL	9	Black Locust	Robinia pseudoacacia	Poor		N	R	N	N
2752	BL	10	Black Locust	Robinia pseudoacacia	Poor		N	R	N	N
2753	BL	13	Black Locust	Robinia pseudoacacia	Fair		N	R	N	N
2754	BL	13	Black Locust	Robinia pseudoacacia	Poor		N	R	N	N
2755	BL	7	Black Locust	Robinia pseudoacacia	Poor		N	R	N	N
2756	BL	13	Black Locust	Robinia pseudoacacia	Fair		N	R	N	N
2757	BL	9	Black Locust	Robinia pseudoacacia	Fair		N	R	N	N
2758	BL	12	Black Locust	Robinia pseudoacacia	Poor		N	R	N	N
2759	BL	13	Black Locust	Robinia pseudoacacia	Poor		N	R	N	N
2760	BL	9	Black Locust	Robinia pseudoacacia	Poor		N	R	N	N
2761	BL	8	Black Locust	Robinia pseudoacacia	Very Poor		N	R	N	N
2762	BL	6	Black Locust	Robinia pseudoacacia	Poor		N	R	N	N
2763	BL	7	Black Locust	Robinia pseudoacacia	Poor		N	R	N	N
2764	BL	8	Black Locust	Robinia pseudoacacia	Poor		N	R	N	N
2765	BL	9	Black Locust	Robinia pseudoacacia	Poor		N	R	N	N
2766	BL	6	Black Locust	Robinia pseudoacacia	Fair		N	R	N	N
2767	BL	10	Black Locust	Robinia pseudoacacia	Fair		N	R	N	N
2768	BL	9	Black Locust	Robinia pseudoacacia	Fair	x1	N	R	N	N
2769	BL	6	Black Locust	Robinia pseudoacacia	Poor		N	R	N	N
2770	BL	6	Black Locust	Robinia pseudoacacia	Poor		N	S	N	N
2771	BL	12	Black Locust	Robinia pseudoacacia	Fair		N	S	N	N
2772	BL	12	Black Locust	Robinia pseudoacacia	Fair		N	S	N	N
2773	BL	13	Black Locust	Robinia pseudoacacia	Fair		N	R	N	N
2774	BL	6	Black Locust	Robinia pseudoacacia	Poor		N	S	N	N
2775	BL	16	Black Locust	Robinia pseudoacacia	Fair		N	S	N	N
2776	BL	8	Black Locust	Robinia pseudoacacia	Fair		N	S	N	N
2777	BL	13	Black Locust	Robinia pseudoacacia	Fair	BUFFER	N	S	N	N
2778	BL	13	Black Locust	Robinia pseudoacacia	Fair	BUFFER	N	S	N	N
2779	BL	8	Black Locust	Robinia pseudoacacia	Fair	BUFFER	N	S	N	N
2780	BL	6	Black Locust	Robinia pseudoacacia	Fair		N	R	N	N
2781	BL	6	Black Locust	Robinia pseudoacacia	Poor		N	S	N	N
2782	BL	14	Black Locust	Robinia pseudoacacia	Poor		N	S	N	N
2783	BL	6	Black Locust	Robinia pseudoacacia	Fair	BUFFER	N	S	N	N
2784	BL	6	Black Locust	Robinia pseudoacacia	Poor		N	S	N	N
2785	BL	8	Black Locust	Robinia pseudoacacia	Fair	BUFFER	N	S	N	N
2807	BL	10	Black Locust	Robinia pseudoacacia	Fair	BUFFER	N	S	N	N
2808	BL	7	Black Locust	Robinia pseudoacacia	Fair	BUFFER	N	S	N	N
2810	BL	18	Black Locust	Robinia pseudoacacia	Fair		N	S	N	N
2811	BL	14	Black Locust	Robinia pseudoacacia	Good		N	S	N	N
2815	BX	8	Box elder	Acer negundo	Poor		N	S	N	N
2816	BL	6	Black Locust	Robinia pseudoacacia	Poor		N	R	N	N
2817	BL	11	Black Locust	Robinia pseudoacacia	Fair		N	R	N	N
2818	BL	10	Black Locust	Robinia pseudoacacia	Poor		N	R	N	N
2819	BL	9	Black Locust	Robinia pseudoacacia	Poor		N	R	N	N
2820	BL	13	Black Locust	Robinia pseudoacacia	Fair		N	R	N	N
2821	BL	6	Black Locust	Robinia pseudoacacia	Poor		N	R	N	N

AG NO.	CODE	DBH	COMMON NAME	LATIN NAME	CONDITION	NOTES	SPECIMEN	SAVE / REMOVE	OFFSITE?	IN BUILDING
2822	BL	7	Black Locust	Robinia pseudoacacia	Fair	x2	N	R	N	Y
2823	BL	7	Black Locust	Robinia pseudoacacia	Poor		N	R	N	N
2824	BL	15	Black Locust	Robinia pseudoacacia	Fair		N	R	N	Y
2825	BL	11	Black Locust	Robinia pseudoacacia	Poor		N	R	N	Y
2826	BL	16	Black Locust	Robinia pseudoacacia	Fair		N	R	N	Y
2827	BL	14	Black Locust	Robinia pseudoacacia	Poor		N	R	N	Y
2828	BL	8	Black Locust	Robinia pseudoacacia	Fair	x2	N	R	N	Y
2829	BL	7	Black Locust	Robinia pseudoacacia	Poor		N	R	N	Y
2830	BL	7	Black Locust	Robinia pseudoacacia	Poor		N	R	N	Y
2831	BL	9	Black Locust	Robinia pseudoacacia	Fair		N	R	N	Y
2832	BL	6	Black Locust	Robinia pseudoacacia	Fair		N	R	N	Y
2833	BL	10	Black Locust	Robinia pseudoacacia	Poor		N	R	N	N
2834	BL	6	Black Locust	Robinia pseudoacacia	Fair		N	R	N	N
2835	BL	9	Black Locust	Robinia pseudoacacia	Fair		N	R	N	Y
2836	BL	9	Black Locust	Robinia pseudoacacia	Fair		N	R	N	Y
2837	BL	9	Black Locust	Robinia pseudoacacia	Fair		N	R	N	Y
2838	BL	9	Black Locust	Robinia pseudoacacia	Poor	x1	N	R	N	Y
2839	BL	10	Black Locust	Robinia pseudoacacia	Fair		N	R	N	Y
2840	BL	7	Black Locust	Robinia pseudoacacia	Fair		N	R	N	Y
2841	BL	11	Black Locust	Robinia pseudoacacia	Fair		N	R	N	Y
2842	BL	19	Black Locust	Robinia pseudoacacia	Fair		N	R	N	Y
2843	BL	7	Black Locust	Robinia pseudoacacia	Poor		N	R	N	Y
2844	BL	9	Black Locust	Robinia pseudoacacia	Fair		N	R	N	Y
2845	BL	13	Black Locust	Robinia pseudoacacia	Poor		N	R	N	Y
2846	BL	14	Black Locust	Robinia pseudoacacia	Fair		N	R	N	Y
2847	BL	9	Black Locust	Robinia pseudoacacia	Poor		N	R	N	Y
2848	BL	10	Black Locust	Robinia pseudoacacia	Poor	x1	N	R	N	Y
2849	BL	7	Black Locust	Robinia pseudoacacia	Fair		N	R	N	Y
2850	BL	6	Black Locust	Robinia pseudoacacia	Fair	x1	N	R	N	Y
2851	BL	6	Black Locust	Robinia pseudoacacia	Poor		N	R	N	N
2852	BL	6	Black Locust	Robinia pseudoacacia	Fair		N	R	N	N
2853	BL	7	Black Locust	Robinia pseudoacacia	Fair		N	R	N	N
2854	BL	7	Black Locust	Robinia pseudoacacia	Poor		N	R	N	N
2855	BL	7	Black Locust	Robinia pseudoacacia	Fair		N	R	N	N
2856	BL	7	Black Locust	Robinia pseudoacacia	Fair		N	R	N	Y
2857	BL	6	Black Locust	Robinia pseudoacacia	Fair		N	R	N	Y
2858	BL	6	Black Locust	Robinia pseudoacacia	Poor		N	R	N	Y
2859	BL	7	Black Locust	Robinia pseudoacacia	Fair		N	R	N	Y
2860	BL	7	Black Locust	Robinia pseudoacacia	Fair		N	R	N	Y
2861	BL	6	Black Locust	Robinia pseudoacacia	Fair		N	R	N	Y
2862	BL	7	Black Locust	Robinia pseudoacacia	Poor		N	R	N	Y
2863	BL	7	Black Locust	Robinia pseudoacacia	Fair		N	R	N	N
2864	BL	7	Black Locust	Robinia pseudoacacia	Fair		N	R	N	Y
2865	BL	7	Black Locust	Robinia pseudoacacia	Fair		N	R	N	Y
2866	BL	8	Black Locust	Robinia pseudoacacia	Poor		N	R	N	Y
2867	BL	8	Black Locust	Robinia pseudoacacia	Fair		N	R	N	N
2868	BL	6	Black Locust	Robinia pseudoacacia	Fair		N	R	N	N
2869	BL	10	Black Locust	Robinia pseudoacacia	Poor	x2	N	R	N	Y
2870	BL	13	Black Locust	Robinia pseudoacacia	Poor		N	R	N	Y
2871	BL	11	Black Locust	Robinia pseudoacacia	Poor		N	R	N	N
2872	BL	12	Red Mulberry	Morus rubra	Fair	x1	N	R	N	N
2873	BL	9	Black Locust	Robinia pseudoacacia	Fair		N	R	N	N
2874	BL	13	Black Locust	Robinia pseudoacacia	Fair		N	R	N	N
2875	BL	21	Black Locust	Robinia pseudoacacia	Fair	x3	N	R	N	N
2876	BL	7	Black Locust	Robinia pseudoacacia	Fair		N	R	N	N
2877	MR	25	Red Mulberry	Morus rubra	Fair	BUFFER	Y	S	N	N
2878	MR	6	Red Mulberry	Morus rubra	Poor		N	S	N	N
2879	MR	9	Red Mulberry	Morus rubra	Fair	BUFFER	N	S	N	N
2880	RB	9	Paper Birch	Betula papyrifera	Fair		N	R	N	N
2881	BL	13	Black Locust	Robinia pseudoacacia	Poor		N	R	N	N
2882	BL	6	Black Locust	Robinia pseudoacacia	Fair		N	R	N	N
2883	BL	7	Black Locust	Robinia pseudoacacia	Fair		N	R	N	N
2884	BL	6	Black Locust	Robinia pseudoacacia	Fair		N	R	N	N
2887	BX	9	Box elder	Acer negundo	Fair		N	S	N	N
2891	BX	13	Box elder	Acer negundo	Poor		N	S	N	N
2894	DX	8	Box elder	Acer negundo	Fair	x2	N	R	N	N
2895	RO	15	Red Oak	Quercus rubra	Fair		N	S	N	N
2896	RC	9	Red Oak	Quercus rubra	Fair	BUFFER	N	S	N	N
2897	SS	5	Sassafras	Sassafras albidum	Fair	BUFFER	N	S	N	N
2898	SS	9	Sassafras	Sassafras albidum	Fair	BUFFER	N	S	N	N
2899	RO	25	Red Oak	Quercus rubra	Fair	BUFFER	Y	S	N	N
2900	BC	9	Wild Black Cherry	Prunus serotina	Fair	BUFFER	N	S	N	N
2901	E	6	American Elm	Ulmus americana	Fair	BUFFER	N	S	N	N
2902	RO	11	Red Oak	Quercus rubra	Fair	BUFFER	N	S	N	N
2903	WO	8	White Oak	Quercus alba	Fair	BUFFER	N	S	N	N
2904	RO	9	Red Oak	Quercus rubra	Fair	BUFFER	N	S	N	N
2905	RO	15	Red Oak	Quercus rubra	Fair	BUFFER	N	S	N	N
2906	RO	10	Red Oak	Quercus rubra	Poor		N	S	N	N
2907	RO	19	Red Oak	Quercus rubra	Fair	BUFFER	Y	S	N	N
2908	RO	18	Red Oak	Quercus rubra	Fair	BUFFER	Y	S	N	N
2909	RO	14	Red Oak	Quercus rubra	Poor		N	S	N	N
2910	RO	16	Red Oak	Quercus rubra	Poor		N	S	N	N
2911	RO	7	Red Oak	Quercus rubra	Fair	BUFFER	N	S	N	N
2912	BC	20	Wild Black Cherry	Prunus serotina	Poor	x2	Y	S	N	N
2913	WO	8	White Oak	Quercus alba	Fair	BUFFER	N	S	N	N
2914	RO	19	Red Oak	Quercus rubra	Poor		N	S	N	N
2915	RO	22	Red Oak	Quercus rubra	Fair	BUFFER	Y	S	N	N
2916	SU	11	Sugar Maple	Acer saccharum	Fair	BUFFER	N	S	N	N
2917	E	10	American Elm	Ulmus americana	Fair	BUFFER	N	S	N	N
2918	RO	6	Red Oak	Quercus rubra	Poor		N	S	N	N
2919	E	12	American Elm	Ulmus americana	Fair	BUFFER	N	S	N	N
2920	E	14	American Elm	Ulmus americana	Fair	BUFFER	N	S	N	N
2926	BL	29	Black Locust	Robinia pseudoacacia	Fair	BUFFER	Y	S	N	N
2927	BC	9	Wild Black Cherry	Prunus serotina	Fair	BUFFER	N	S	N	N
2928	BL	14	Black Locust	Robinia pseudoacacia	Fair		N	S	N	N
2930	BC	17	Wild Black Cherry	Prunus serotina	Poor		N	S	N	N
2931	BC	17	Wild Black Cherry	Prunus serotina	Poor		N	S	N	N
2933	SU	8	Sugar Maple	Acer saccharum	Poor		N	S	N	N
2935	SU	9	Sugar Maple	Acer saccharum	Poor		N	S	N	N
2936	SU	6	Sugar Maple	Acer saccharum	Fair	BUFFER	N	S	N	N
2937	WS	12	White Spruce	Picea glauca	Poor		N	S	N	N
2941	CT	40	Cottonwood	Populus deltoides	Fair	BUFFER	Y	S	N	N
2960	SS	6	Sassafras	Sassafras albidum	Fair	BUFFER	N	S	N	N
2961	RO	12	Red Oak	Quercus rubra	Fair	BUFFER	N	S	N	N
2967	RO	10	Red Oak	Quercus rubra	Fair	BUFFER	N	S	N	N
2968	RO	12	Red Oak	Quercus rubra	Fair	BUFFER	N	S	N	N
2969	RO	9	Red Oak	Quercus rubra	Fair	BUFFER	N	S	N	N
2970	RO	26	Red Oak	Quercus rubra	Poor		Y	S	N	N
2971	RO	7	Red Oak	Quercus rubra	Poor		N	S	N	N
2976	MR	8	Red Mulberry	Morus rubra	Poor	x1	N	S	N	N
2986	BL	8	Black Locust	Robinia pseudoacacia	Fair		N	S	Y	N
2988	BL	18	Black Locust	Robinia pseudoacacia	Fair		N	S	Y	N
2989	BL	6	Black Locust	Robinia pseudoacacia	Fair		N	S	Y	N
2990	BL	6	Black Locust	Robinia pseudoacacia	Fair		N	S	Y	N
2991	BL	6	Black Locust	Robinia pseudoacacia	Fair		N	S	Y	N
2992	BL	7	Black Locust	Robinia pseudoacacia	Fair		N	S	Y	N
2993	BL	7	Black Locust	Robinia pseudoacacia	Fair		N	S	Y	N
2994	BL	8	Black Locust	Robinia pseudoacacia	Fair		N	S	Y	N
2995	BL	8	Black Locust	Robinia pseudoacacia	Poor		N	S	Y	N
2996	BL	9	Black Locust	Robinia pseudoacacia	Poor		N	S	Y	N
2997	BL	9	Black Locust	Robinia pseudoacacia	Poor		N	S	Y	N
2998	BL	9	Black Locust	Robinia pseudoacacia	Poor		N	S	Y	N
2999	BL	9	Black Locust	Robinia pseudoacacia	Poor		N	S	Y	N
3000	BL	9	Black Locust	Robinia pseudoacacia	Poor		N	S	Y	N
3001	BL	9	Black Locust	Robinia pseudoacacia	Poor		N	S	Y	N
3002	BL	9	Black Locust	Robinia pseudoacacia	Poor		N	S	Y	N
3003	BL	9	Black Locust	Robinia pseudoacacia	Poor		N	S	Y	N
3004	BL	9	Black Locust	Robinia pseudoacacia	Poor		N	S	Y	N
3005	BL	9	Black Locust	Robinia pseudoacacia	Poor		N	S	Y	N
3006	BL	9	Black Locust	Robinia pseudoacacia	Poor		N	S	Y	N
3007	BL	9	Black Locust	Robinia pseudoacacia	Poor		N	S	Y	N
3008	BL	9	Black Locust	Robinia pseudoacacia	Poor		N	S	Y	N
3009	BL	9	Black Locust	Robinia pseudoacacia	Poor		N	S	Y	N
3010	BL	9	Black Locust	Robinia pseudoacacia	Poor		N	S	Y	N
3011	BL	9	Black Locust	Robinia pseudoacacia	Poor		N	S	Y	N
3012	BL	9	Black Locust	Robinia pseudoacacia	Poor		N	S	Y	N
3013	BL	9	Black Locust	Robinia pseudoacacia	Poor		N	S	Y	N
3014	BL	9	Black Locust	Robinia pseudoacacia	Poor		N	S	Y	N
3015	BL	9	Black Locust	Robinia pseudoacacia	Poor		N	S	Y	N
3016	BL	9	Black Locust	Robinia pseudoacacia	Poor		N	S	Y	N
3017	BL	9	Black Locust	Robinia pseudoacacia	Poor		N	S	Y	N
3018	BL	9	Black Locust	Robinia pseudoacacia	Poor		N	S	Y	N
3019	BL	9	Black Locust	Robinia pseudoacacia	Poor		N	S	Y	N
3020	BL	9	Black Locust	Robinia pseudoacacia	Poor		N	S	Y	N
3021	BL	9	Black Locust	Robinia pseudoacacia	Poor		N	S	Y	N
3022	BL	9	Black Locust	Robinia pseudoacacia	Poor		N	S	Y	N
3023	BL	9	Black Locust	Robinia pseudoacacia	Poor		N	S	Y	N
3024	BL	9	Black Locust	Robinia pseudoacacia	Poor		N	S	Y	N
3025	BL	9	Black Locust	Robinia pseudoacacia	Poor		N	S	Y	N
3026	BL	9	Black Locust	Robinia pseudoacacia	Poor		N	S	Y	N
3027	BL	9	Black Locust	Robinia pseudoacacia	Poor		N	S	Y	N
3028	BL	9	Black Locust	Robinia pseudoacacia	Poor		N	S	Y	N
3029	BL	9	Black Locust	Robinia pseudoacacia	Poor		N	S	Y	N
3030	BL	9	Black Locust	Robinia pseudoacacia	Poor		N	S	Y	N
3031	BL	9	Black Locust	Robinia pseudoacacia	Poor		N	S	Y	N
3032	BL	9	Black Locust	Robinia pseudoacacia	Poor		N	S	Y	N
3033	BL	9	Black Locust	Robinia pseudoacacia	Poor		N	S	Y	N
3034	BL	9	Black Locust	Robinia pseudoacacia	Poor		N	S	Y	N
3035	BL	9	Black Locust	Robinia pseudoacacia	Poor		N	S	Y	N
3036	BL	9	Black Locust	Robinia pseudoacacia	Poor		N	S	Y	N
3037	BL	9	Black Locust	Robinia pseudoacacia	Poor		N	S	Y	N
3038	BL	9	Black Locust	Robinia pseudoacacia	Poor		N	S	Y	N
3039	BL	9	Black Locust	Robinia pseudoacacia	Poor		N	S	Y	N
3040	BL	9	Black Locust	Robinia pseudoacacia	Poor		N	S	Y	N
3041	BL	9	Black Locust	Robinia pseudoacacia	Poor		N	S	Y	N
3042	BL	9	Black Locust	Robinia pseudoacacia	Poor		N	S	Y	N
3043										

No.	BY	CHK	DESCRIPTION	DATE
3		GMB	GMB CITY COMMENTS	7/23/20
2		JKS	GMB REVISED SPA TO CITY	6/29/20
1		KRD	GMB REVISED PER CITY COMMENTS	12/11/19



CAUTION!!
THE LOCATIONS AND ELEVATIONS OF EXISTING UNDERGROUND UTILITIES AS SHOWN ON THIS DRAWING ARE ONLY APPROXIMATE. NO GUARANTEE IS EITHER EXPRESSED OR IMPLIED AS TO THE COMPLETENESS OR ACCURACY THEREOF. THE CONTRACTOR SHALL BE EXCLUSIVELY RESPONSIBLE FOR DETERMINING THE EXACT UTILITY LOCATIONS AND ELEVATIONS PRIOR TO THE START OF CONSTRUCTION.

THIS DRAWING AND DESIGN ARE THE PROPERTY OF
PEA, INC. THEY ARE SUBMITTED ON THE CONDITION
THAT THEY ARE NOT TO BE USED, REPRODUCED, OR
COPIED, IN WHOLE OR IN PART, OR USED FOR
FURNISHING INFORMATION TO OTHERS, WITHOUT THE
PRIOR WRITTEN CONSENT OF PEA, INC. ALL COMMON
LAW RIGHTS OF COPYRIGHT AND OTHERWISE ARE
HEREBY SPECIFICALLY RESERVED. © 2018 PEA, INC.

CONSTRUCTION CONTRACTOR AGREES THAT IN ACCORDANCE WITH GENERALLY ACCEPTED CONSTRUCTION PRACTICES, CONSTRUCTION CONTRACTOR WILL BE REQUIRED TO ASSUME SOLE AND COMPLETE RESPONSIBILITY FOR JOB SITE CONDITIONS DURING THE COURSE OF CONSTRUCTION OF THE PROJECT, INCLUDING SAFETY OF ALL PERSONS AND PROPERTY; THAT THIS REQUIREMENT SHALL BE MADE TO APPLY CONTINUOUSLY AND NOT BE LIMITED TO NORMAL WORKING HOURS, AND CONSTRUCTION CONTRACTOR FURTHER AGREES TO DEFEND, INDEMNIFY AND HOLD DESIGN PROFESSIONAL HARMLESS FROM ANY AND ALL LIABILITY, REAL OR ALLEGED, IN CONNECTION WITH THE PERFORMANCE OF WORK ON THIS PROJECT EXCEPTING LIABILITY ARISING FROM THE SOLE NEGLIGENCE OF THE DESIGN PROFESSIONAL.

**3 FULL WORKING DAYS
BEFORE YOU DIG CALL**

811


Know what's below
Call before you dig
MISS DIG System, Inc.

1-800-482-7171 www.missdig.net
(TOLL FREE)



PEA, Inc.

2430 Rochester Ct, Ste 100
Troy, MI 48063-1872
t: 248.689.9090
f: 248.689.1044
www.peainc.com

	TDS	AN=1928,00
--	-----	------------

LS
1 E.,
IGAN
M.
E. SURVEY P.

NTS
ST
HILL
N., R. 1
Y, MICH
P.
T=10) 199

TEME
TE 203

E LI
TER
80, T. 03
COUNT
WC

STF DIANS

WEST
PAD, SUITE
48377

TRE
WEST
SECTION 3
AKLAND

SUR.
LANDSCAPE

NG -
OCH

SIDE
 3475 131
 N
 HIST
 DE R
 E NW 1/4
 ESTER H
 JF
 ROCHES
 131

ILL
396
EX
L SID
T OF TH
ROCHEE
DN
238 HILL ST

H	HILL PAR CITY OF	JRG	2019\2019
---	------------------------	-----	-----------

DES.

ORIGINAL ISSUE DATE:
OCTOBER 24, 2019

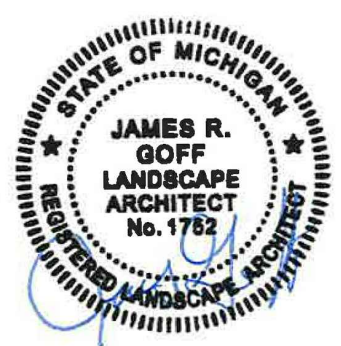
PEA JOB NO. 2019-238
SCALE NOTES

DRAWING NUMBER:
T 1 1

1-1.1

TAX NO.	CODE	DBH	COMMON NAME	LATIN NAME	CONDITION	NOTES	SPECIMEN	SAVE / REMOVE	OFFSITE?	IN BUILDING
2623	BL	6	Black Locust	<i>Robinia pseudoacacia</i>	Poor		N	S	Y	N
2624	BL	10	Black Locust	<i>Robinia pseudoacacia</i>	Poor	x2	N	S	Y	N
2625	BL	12	Black Locust	<i>Robinia pseudoacacia</i>	Fair		N	S	Y	N
2626	BL	8	Black Locust	<i>Robinia pseudoacacia</i>	Fair		N	S	Y	N
2627	BL	7	Black Locust	<i>Robinia pseudoacacia</i>	Poor		N	S	Y	N
2628	BL	9	Black Locust	<i>Robinia pseudoacacia</i>	Poor		N	S	Y	N
2629	BL	7	Black Locust	<i>Robinia pseudoacacia</i>	Fair		N	S	Y	N
2630	BL	7	Black Locust	<i>Robinia pseudoacacia</i>	Fair		N	S	Y	N
2631	BL	8	Black Locust	<i>Robinia pseudoacacia</i>	Poor		N	S	Y	N
2632	BL	9	Black Locust	<i>Robinia pseudoacacia</i>	Poor		N	S	Y	N
2633	BL	13	Black Locust	<i>Robinia pseudoacacia</i>	Poor		N	S	Y	N
2634	CT	24	Cottonwood	<i>Populus deltoides</i>	Poor		Y	S	Y	N
2635	BL	7	Black Locust	<i>Robinia pseudoacacia</i>	Fair		N	S	Y	N
2636	BL	7	Black Locust	<i>Robinia pseudoacacia</i>	Fair		N	S	Y	N
2637	BL	9	Black Locust	<i>Robinia pseudoacacia</i>	Fair		N	S	Y	N
2638	C	6	Catalpa	<i>Catalpa speciosa</i>	Fair		N	S	Y	N
2643	BL	13	Black Locust	<i>Robinia pseudoacacia</i>	Poor	x1	N	S	Y	N
2644	BL	14	Black Locust	<i>Robinia pseudoacacia</i>	Fair		N	S	Y	N
2645	BL	8	Black Locust	<i>Robinia pseudoacacia</i>	Fair		N	S	Y	N
2648	BL	8	Black Locust	<i>Robinia pseudoacacia</i>	Poor		N	S	Y	N
2701	BL	6	Black Locust	<i>Robinia pseudoacacia</i>	Fair		N	S	Y	N
2702	BL	6	Black Locust	<i>Robinia pseudoacacia</i>	Fair		N	S	Y	N
2703	BL	6	Black Locust	<i>Robinia pseudoacacia</i>	Fair		N	S	Y	N
2704	BL	7	Black Locust	<i>Robinia pseudoacacia</i>	Poor		N	S	Y	N
2705	BL	9	Black Locust	<i>Robinia pseudoacacia</i>	Fair		N	S	Y	N
2706	BL	6	Black Locust	<i>Robinia pseudoacacia</i>	Poor		N	S	Y	N
2707	BL	7	Black Locust	<i>Robinia pseudoacacia</i>	Poor		N	S	Y	N
2708	BL	7	Black Locust	<i>Robinia pseudoacacia</i>	Poor		N	S	Y	N
2709	BL	6	Black Locust	<i>Robinia pseudoacacia</i>	Poor		N	S	Y	N
2710	BL	6	Black Locust	<i>Robinia pseudoacacia</i>	Poor		N	S	Y	N
2711	BL	6	Black Locust	<i>Robinia pseudoacacia</i>	Poor		N	S	Y	N
2712	BL	16	Black Locust	<i>Robinia pseudoacacia</i>	Poor		N	S	Y	N
2786	BL	9	Black Locust	<i>Robinia pseudoacacia</i>	Fair		N	S	Y	N
2787	BL	13	Black Locust	<i>Robinia pseudoacacia</i>	Fair		N	S	Y	N
2788	BL	14	Black Locust	<i>Robinia pseudoacacia</i>	Fair		N	S	Y	N
2789	BL	7	Black Locust	<i>Robinia pseudoacacia</i>	Poor		N	S	Y	N
2790	BL	13	Black Locust	<i>Robinia pseudoacacia</i>	Fair		N	S	Y	N
2791	BL	10	Black Locust	<i>Robinia pseudoacacia</i>	Fair		N	S	Y	N
2792	BL	13	Black Locust	<i>Robinia pseudoacacia</i>	Fair		N	S	Y	N
2793	BL	10	Black Locust	<i>Robinia pseudoacacia</i>	Fair		N	S	Y	N
2794	BL	6	Black Locust	<i>Robinia pseudoacacia</i>	Poor		N	S	Y	N
2795	BL	13	Black Locust	<i>Robinia pseudoacacia</i>	Poor		N	S	Y	N
2796	BL	9	Black Locust	<i>Robinia pseudoacacia</i>	Fair		N	S	Y	N
2797	BL	9	Black Locust	<i>Robinia pseudoacacia</i>	Poor		N	S	Y	N
2798	BL	16	Black Locust	<i>Robinia pseudoacacia</i>	Poor		N	S	Y	N
2799	BL	12	Black Locust	<i>Robinia pseudoacacia</i>	Fair		N	S	Y	N
2800	BL	12	Black Locust	<i>Robinia pseudoacacia</i>	Poor		N	S	Y	N
2801	BL	13	Black Locust	<i>Robinia pseudoacacia</i>	Poor		N	S	Y	N
2802	BL	12	Black Locust	<i>Robinia pseudoacacia</i>	Fair		N	S	Y	N
2803	BL	8	Black Locust	<i>Robinia pseudoacacia</i>	Poor		N	S	Y	N
2804	BL	7	Black Locust	<i>Robinia pseudoacacia</i>	Poor		N	S	Y	N
2805										

No.	LN	DESCRIPTION	DATE
	3	GMB GMB CITY COMMENTS	7/23/20
	2	JKS REVISED SPA TO CITY	6/29/20
	2	GMB REVISED PER CITY COMMENTS	6/29/20
	KOD	REVISED PER CITY COMMENTS	7/2/20



THE LOCATIONS AND ELEVATIONS OF EXISTING UNDERGROUND UTILITIES AS SHOWN ON THIS DRAWING ARE ONLY APPROXIMATE. NO GUARANTEE IS EITHER EXPRESSED OR IMPLIED AS TO THE COMPLETENESS OR ACCURACY THEREOF. THE CONTRACTOR SHALL BE EXCLUSIVELY RESPONSIBLE FOR DETERMINING THE EXACT UTILITY LOCATIONS AND ELEVATIONS PRIOR TO THE START OF CONSTRUCTION.

THIS DRAWING AND DESIGN ARE THE PROPERTY OF
PEA, INC. THEY ARE SUBMITTED ON THE CONDITION
THAT THEY ARE NOT TO BE USED, REPRODUCED, OR
COPIED, IN WHOLE OR IN PART, OR USED FOR
FURNISHING INFORMATION TO OTHERS, WITHOUT THE
PRIOR WRITTEN CONSENT OF PEA, INC. ALL COMMON
LAW RIGHTS OF COPYRIGHT AND OTHERWISE ARE
HEREBY SPECIFICALLY RESERVED. © 2018 PEA, INC.

CONSTRUCTION CONTRACTOR AGREES THAT IN ACCORDANCE WITH GENERALLY ACCEPTED CONSTRUCTION PRACTICES, CONSTRUCTION CONTRACTOR WILL BE REQUIRED TO ASSUME SOLE AND COMPLETE RESPONSIBILITY FOR JOB SITE CONDITIONS DURING THE COURSE OF CONSTRUCTION OF THE PROJECT, INCLUDING SAFETY OF ALL PERSONS AND PROPERTY; THAT THIS REQUIREMENT SHALL BE MADE TO APPLY CONTINUOUSLY AND NOT BE LIMITED TO NORMAL WORKING HOURS, AND CONSTRUCTION CONTRACTOR FURTHER AGREES TO DEFEND, INDEMNIFY AND HOLD DESIGN PROFESSIONAL HARMLESS FROM ANY AND ALL CLAIMS, DAMAGES OR ALLEGED, IN CONNECTION WITH THE PERFORMANCE OF WORK ON THIS PROJECT EXCEPTING LIABILITY ARISING FROM THE SOLE NEGLIGENCE OF THE DESIGN PROFESSIONAL.

**3 FULL WORKING DAYS
BEFORE YOU DIG CALL**



Know what's below
Call before you dig
MISS DIG System, Inc.

1-800-482-7171 www.missdig.net
(TOLL FREE)



PEA, Inc.

2430 Rochester Ct, Ste 100
Troy, MI 48063-1872
t: 248.689.9090
f: 248.689.1044
www.peainc.com

HILLSIDE INVESTMENTS

STME
SUITE 203

EXISTING TREE LIST

HILLSIDE ROCHESTER HILLS
PART OF THE NW 1/4 OF SECTION 30, T. 03 N., R. 11 E.,
CITY OF ROCHESTER HILLS, OAKLAND COUNTY, MICHIGAN

DES.	JRG	DN.	JRG	SUR.	WC	P.M.	TDS
S:\PROJECTS\2019\2019-238 HILLSIDE ROOFESTER HILLS\DWG\LANDSCAPE\SITE PLANS\T-10) TREE SURVEY PLAN-19238.dwg							

ORIGINAL ISSUE DATE:
OCTOBER 24, 2019

PEA JOB NO. 2019-238

SCALE: N.T.S.

DRAWING NUMBER:

T-1.2

XREF: S:PROJECTS\2019\2019238\DWG\19238-TOPCBASE.DWG
XREF: S:PROJECTS\2019\2019238\DWG\SITEPLANS\X-BASE-19238.DWG
XREF: S:PROJECTS\2019\2019238\DWG\SITEPLANS\X-TBLK-19238.DWG

LUMEN P1, P2, P3, P4, & P5



D-Series Size 1 Mast Arm Mount LED Area Luminaire



Catalog
Number

Notes

Type

Use the Tab key or mouse over the page to see all interactive elements.

A+ Capable Luminaire

This item is an A+ capable luminaire, which has been designed and tested to provide consistent color appearance and system-level interoperability.

- All configurations of this luminaire meet the Acuity Brands' specification for chromatic consistency
- This luminaire is A+ Certified when ordered with DTL® controls marked by a **shaded background**. DTL DLL equipped luminaires meet the A+ specification for luminaire to photocell interoperability!
- This luminaire is part of an A+ Certified solution for ROAM®2 or XPoint™ Wireless control networks, providing out-of-the-box control compatibility with simple commissioning, when ordered with drivers and control options marked by a **shaded background**

To learn more about A+, visit www.acuitybrands.com/aplus.

- See ordering tree for details.
- A+ Certified Solutions for ROAM require the order of one ROAM node per luminaire. Sold Separately: [Link to Roam](#); [Link to DTL DLL](#)



A+ Capable options indicated by this color background.

EXAMPLE: DSX1 LED 60C 1000 40K T3M MVOLT MA DDBXD

Series	LEDs	Drive current	Color temperature	Distribution	Voltage	Mounting	Options	Finish
DSX1 LED	Forward optics 30C 30 LEDs (one engine) 40C 40 LEDs (two engines) 60C 60 LEDs (two engines) Rotated optics 60C 60 LEDs (two engines)	530 530 mA 700 700 mA 1000 1000 mA (1 A)	30K 3000 K (80 CR min.) 40K 4000 K (70 CR min.) 50K 5000 K (67 CR)	T1S Type I short T2S Type II short T3S Type III short T4M Type IV medium T5M Type V medium T6M Type VI medium T7M Forward throw medium T8V Type V very short T9S Type I short T10M Type V medium T11W Type V wide	120V 120V 208V 208V 240V 240V 347V 347V 480V 480V	MA Mast arm ready	Shipped installed (blank) DMG 0-10V dimming driver (no controls) PER NEMA twist-lock receptacle only (no controls) DCR Dimmable and controllable via ROAM® (no controls) HS House-side shield ¹ WTR Utility terminal block DS Dual switching ^{1,4} BURUV External bubble level L90 Left rotated optics ⁷ R90 Right rotated optics ⁷	DDBKD Dark bronze DBLXD Black DNUXD Natural aluminum DWHXD White DDBXD Textured dark bronze DBLXD Textured black DNUXD Textured natural aluminum DWHXD Textured white



One Lithonia Way • Conyers, Georgia 30012 • Phone: 800.279.8041 • www.lithonia.com
© 2012-2017 Acuity Brands Lighting, Inc. All rights reserved.

DSX1-MA-LED

LUMEN P6 & P7



D-Series Size 1 LED Wall Luminaire



Catalog
Number

Notes

Type

Use the Tab key or mouse over the page to see all interactive elements.

d-series

Specifications Luminaire

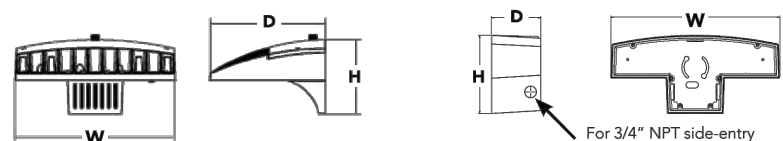
Width: 13-3/4" (34.9 cm)
Depth: 10" (25.4 cm)
Height: 6-3/8" (16.2 cm)

Weight: 12 lbs (5.4 kg)

Back Box (BBW, ELCW)

Width: 13-3/4" (34.9 cm)
Depth: 4" (10.2 cm)
Height: 6-3/8" (16.2 cm)

Weight: 5 lbs (2.3 kg)
Weight: 10 lbs (4.5 kg)



For 3/4" NPT side-entry conduit (BBW only)

Introduction

The D-Series Wall luminaire is a stylish, fully integrated LED solution for building-mount applications. It features a sleek, modern design and is carefully engineered to provide long-lasting, energy-efficient lighting with a variety of optical and control options for customized performance.

With an expected service life of over 20 years of nighttime use and up to 74% in energy savings over comparable 250W metal halide luminaires, the D-Series Wall is a reliable, low-maintenance lighting solution that produces sites that are exceptionally illuminated.

EXAMPLE: DSXW1 LED 20C 1000 40K T3M MVOLT DDBTDX

DSXW1 LED							
Series	LEDs	Drive Current	Color temperature	Distribution	Voltage	Mounting	Control Options
DSXW1 LED	10C 10 LEDs (one engine)	350 350 mA	30K 3000 K	T2S Type I Short	MVOLT ¹	Shipped included (dark)	Shipped installed
		530 530 mA	40K 4000 K	T2M Type II Medium	120 ¹		
	20C 20 LEDs (two engines)	700 700 mA	50K 5000 K	T3S Type III Short	208 ¹	BBW Surface-mount	DMG 0-10V dimming driver (no controls; wires pulled outside fixture)
		1000 1000 mA (1 A) ¹	AMBC Amber phosphor converted	T3M Type IV Medium	240 ¹		PIR 180° motion/ambient light sensor, <15° mgl hr ^{1,7}
	T4M Forward Throw Medium	T5VDF Asymmetric diffuse			277 ¹	PIRIR 180° motion/ambient light sensor, 15-30° mgl hr ^{1,7}	
					347 ^{1,4}		PIRIRFCV Motion/ambient sensor, 8-15° mounting height, ambient sensor enabled at 16' ^{1,7}
					480 ^{1,4}		PIRIRFCV Motion/ambient sensor, 15-30° mounting height, ambient sensor enabled at 16' ^{1,7}
							ELCW Emergency battery backup (includes external component enclosure), not FCC compliant ⁸

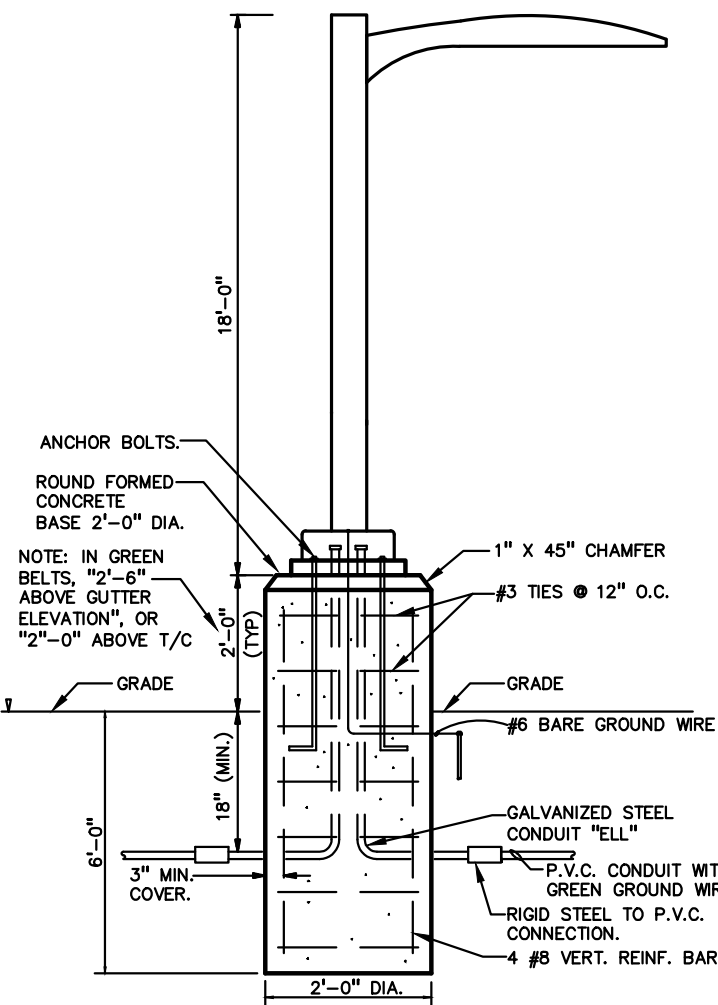
Other Options	Finish
Shipped installed SE Single line (120, 277 or 347V) ^{1,4} DF Double line (208, 240 or 480V) ^{1,4} HS House-side shield ¹ SPD Separate surge protection	DDBKD Dark bronze DBLXD Black DNUXD Natural aluminum DWHXD White DDBXD Textured dark bronze DBLXD Textured black DNUXD Textured natural aluminum DWHXD Textured white

Accessories	Notes
DSXW1U House side shield (one per luminaire) DSXW1U-B Bed detector spikes DSXW1U-W Wire guard accessory DSXW1U-V Vandal guard accessory	1 20C 1000 is not available with PIR, PIRIR, PIRIRFCV or PIRIRFCV. 2 MVOLT driver operates on any line voltage from 120-277V (50/60 Hz). 3 Single line (SE) requires 120, 277 or 347 voltage option. Double line (DF) requires 208, 240 or 480 voltage option. 4 Only available with 20C, 700mA or 1000mA. Not available with PIR or PIRIR. 5 Back box ships installed on fixture. Cannot be field installed. Cannot be ordered as an accessory. 6 Photocell (PE) requires 120, 208, 240, 277 or 347 voltage option. Not available with motion/ambient light sensors (PIR or PIRIR). 7 Reference Motion Sensor table on page 3. 8 Cold weather (CWC) rated. Not compatible with conduit entry applications. Not available with BBW mounting option. Not available with 347 or 480 voltage options. Emergency components located in back box housing. Emergency mode ES files located on product page at www.lithonia.com . 9 Not available with ELCW. 10 Also available as a separate accessory; see Accessories information.



One Lithonia Way • Conyers, Georgia 30012 • Phone: 800.279.8041 • www.lithonia.com
© 2012-2018 Acuity Brands Lighting, Inc. All rights reserved.

DSXW1-LED
Rev. 3/13/18



CONCRETE BASE DETAIL
NOT TO SCALE



CAUTION!!
THE LOCATIONS AND ELEVATIONS OF EXISTING UNDERGROUND UTILITIES AS SHOWN ON THIS DRAWING ARE ONLY APPROXIMATE. NO GUARANTEE IS GIVEN FOR THE ACCURACY OF THE INFORMATION. THE CONTRACTOR SHALL BE EXCLUSIVELY RESPONSIBLE FOR DETERMINING THE EXACT UTILITY LOCATIONS AND ELEVATIONS PRIOR TO THE START OF CONSTRUCTION.

THIS DRAWING AND DESIGN ARE THE PROPERTY OF PEA, INC. THEY ARE SUBMITTED ON THE UNDERSTANDING THAT THEY ARE NOT TO BE USED, REPRODUCED, OR COPIED IN WHOLE OR IN PART, OR USED FOR FURNISHING INFORMATION TO OTHERS, WITHOUT THE PRIOR WRITTEN CONSENT OF PEA, INC. ALL COMMON LAW RIGHTS OF COPYRIGHT AND OTHERWISE ARE HEREBY SPECIFICALLY RESERVED. © 2018 PEA, INC.

CONSTRUCTION CONTRACTOR AGREES THAT IN ACCORDANCE WITH GENERALLY ACCEPTED CONSTRUCTION PRACTICES, CONSTRUCTION SHALL BE THE RESPONSIBILITY OF THE CONTRACTOR AND COMPLETE RESPONSIBILITY FOR JOB SITE CONDITIONS DURING THE COURSE OF CONSTRUCTION OF THE PROJECT, INCLUDING SAFETY OF ALL PERSONS AND PROPERTY, THAT THE REQUIREMENT SHALL BE MADE TO APPLY CONTRACTUALLY AND NOT BE LIMITED TO NORMAL WORKING HOURS, AND CONSTRUCTION CONTRACTOR FURTHER AGREES TO DEFEND, INDEMNIFY AND HOLD DESIGN PROFESSIONAL OR ALLIED IN CONNECTION WITH THE PERFORMANCE OF WORK ON THIS PROJECT EXCEPT LIABILITY ARISING FROM THE SOLE NEGLIGENCE OF THE DESIGN PROFESSIONAL.

**3 FULL WORKING DAYS
BEFORE YOU DIG CALL**

811
Know what's below
Call before you dig
MISS DIG System, Inc.
1-800-482-7171 www.missdig.net
(TOLL FREE)



PEA, Inc.
2430 Rochester Ct, Ste 100
Troy, MI 48063-1872
t: 248.689.9090
f: 248.689.1044
www.peainc.com

HILLSIDE INVESTMENTS

3947 S 13 MILE ROAD, SUITE 203
TROY, MI 48063

**PHOTOMETRIC DETAILS
HILLSIDE ROCHESTER HILLS**
PART OF THE NW 1/4 OF SECTION 30, T.03 N., R. 11 E.,
CITY OF ROCHESTER HILLS, OKLAND COUNTY, MICHIGAN

DES.	GMB	DN.	KRD	SUR	WC	P.M.	TDS
1	2	3	4	5	6	7	8

ORIGINAL ISSUE DATE:
OCTOBER 24, 2019

PEA JOB NO. 2019-238

SCALE: N.T.S.

DRAWING NUMBER:

SL-1.1

CITY FILE #19-040, SECTION 30
NOT FOR CONSTRUCTION

XREF: S:\PROJECTS\2019\2019238\DWG\19238-TOPBASE.DWG
XREF: S:\PROJECTS\2019\2019238\DWG\19238-VEGETATION.DWG
XREF: S:\PROJECTS\2019\2019238\DWG\19238-TBLK-19238.DWG

CODE COMPLIANCE CHART

APPLICABLE CODE REQUIREMENTS:

THIS BUILDING HAS BEEN DESIGNED IN ACCORDANCE WITH THE FOLLOWING:

- 2015 MICHIGAN BUILDING CODE (MBC)
- 2015 MICHIGAN PLUMBING CODE (MPC)
- 2015 MICHIGAN MECHANICAL CODE (MMC)
- 2017 NATIONAL ELECTRIC CODE WITH PART 8 AMENDMENTS (NEC)
- PART 10 MICHIGAN UNIFORM ENERGY CODE PART 10A RULES (ANSI/ASRAE 90.1-CODE 2015)
- MICHIGAN BARRIER FREE DESIGN LAW (PA 1 OF 1966 AS AMENDED), INCORPORATING THE 2012 MICHIGAN BUILDING CODE WITH ICC/ANSI A-117.1, 2009
- IFC 2015 INTERNATIONAL FIRE CODE
- NFPA 13-2013 FIRE SPRINKLER SYSTEM
- NFPA 72-2013 FIRE ALARM SYSTEM

OCCUPANCY CLASSIFICATION:

- USE GROUP "B" (BUSINESS)

CONSTRUCTION CLASSIFICATION:

- TYPE IIB (MBC 602.2)

FIRE SUPPRESSION REQUIREMENTS:

- BUILDING IS COMPLETELY PROTECTED BY AN APPROVED AUTOMATIC FIRE SUPPRESSION SYSTEM (MBC 903.2)

BUILDING AREA:

FIRST FLOOR	=	50,370 S.F.
SECOND FLOOR	=	52,700 S.F.
THIRD FLOOR	=	52,700 S.F.
TOTAL BUILDING AREA	=	155,770 S.F.

ALLOWABLE AREA:

OFFICE

- TYPE II B, MBC 506.2

- AREA ALLOWED = TABULAR AREA (INCL. SPRINKLER INCREASE) + FRONTAGE INCREASE x STORIES ABOVE GRADE

= TABULAR AREA [At + (NS x IF)] x Sa

- TABULAR AREA (At) ALLOWED (MBC TABLE 506.2, 'B-1' USE, 'II B' CONSTRUCTION = 69,000 S.F.

- FRONTAGE INCREASE (If) ALLOWED (MBC 506.2)

$$IF = \left[\frac{\text{OPEN PERIMETER} - 0.25}{\text{TOTAL PERIMETER}} \right] \frac{W}{30}$$
$$= \left[\frac{4,082'-7" \text{ L.F.} - 0.25}{1,082'-7" \text{ L.F.}} \right] \frac{30}{30} = 100 \text{ [0.75] (1) = 75\% INCREASE ALLOWED}$$

TOTAL AREA ALLOWED	=	[69,000 S.F. + (23,000 x .75)] x 3
	=	[69,000 S.F. + 17,250] x 3 = 258,750 S.F.
		258,750 S.F. ALLOWED
		155,770 S.F. PROPOSED

ALLOWABLE BUILDING HEIGHT:

- USE 'B', TYPE IIB: 75 FEET, 4 STORIES (MBC TABLE 504.3, 504.4)

PROPOSED BUILDING IS 48'-0", THREE STORY - ACCEPTABLE

OCCUPANCY:

- PER MBC (MBC TABLE 1004.1.2)

FIRST: 50,370 S.F. GROSS MINUS 1,380 S.F. PERIMETER WALL THICKNESS = 48,990 S.F.
OFFICE/LAB AREAS: 48,990 S.F. / 100 S.F. PER OCC. = 490 OCCUPANTS

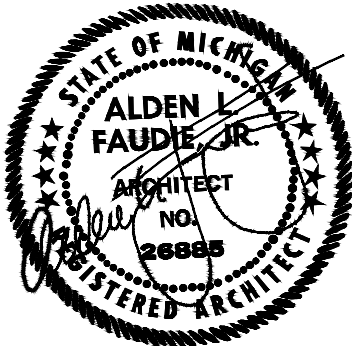
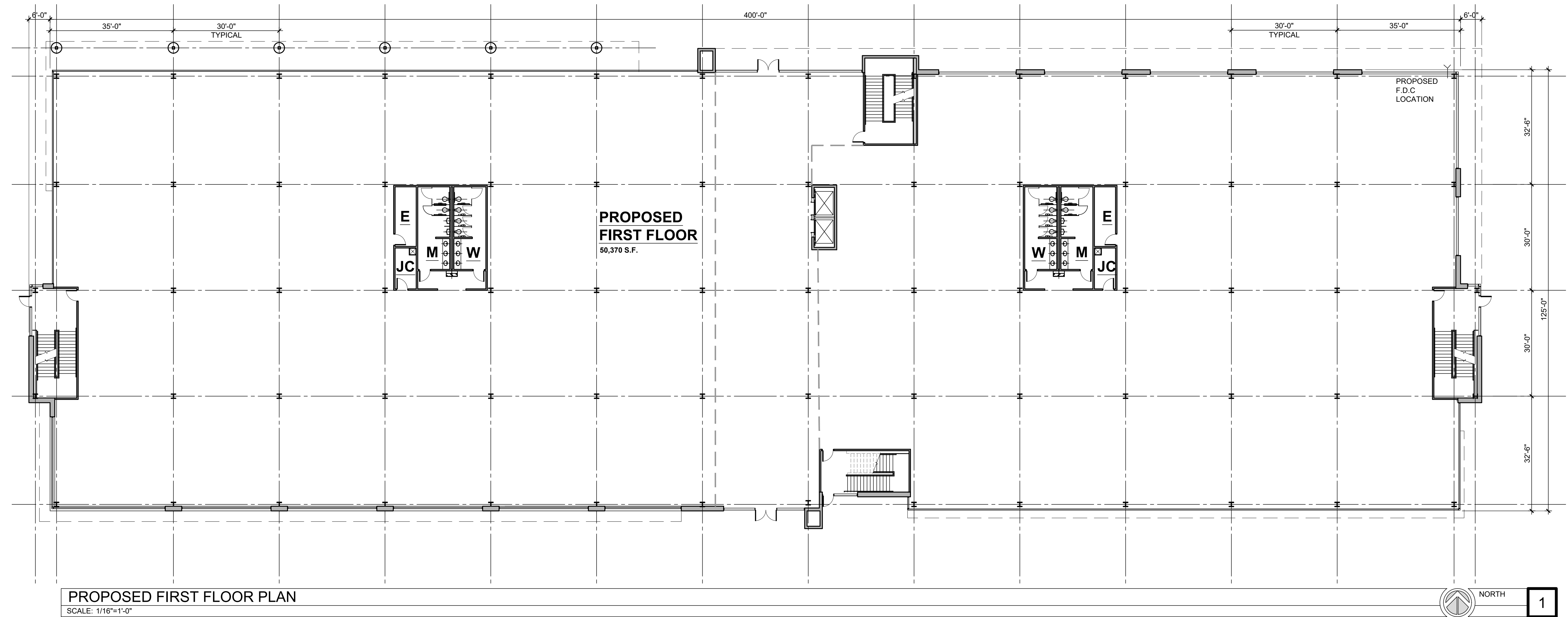
SECOND: 52,700 S.F. GROSS MINUS 1,295 S.F. PERIMETER WALL THICKNESS = 51,405 S.F.
OFFICE/LAB AREAS: 51,405 S.F. / 100 S.F. PER OCC. = 515 OCCUPANTS

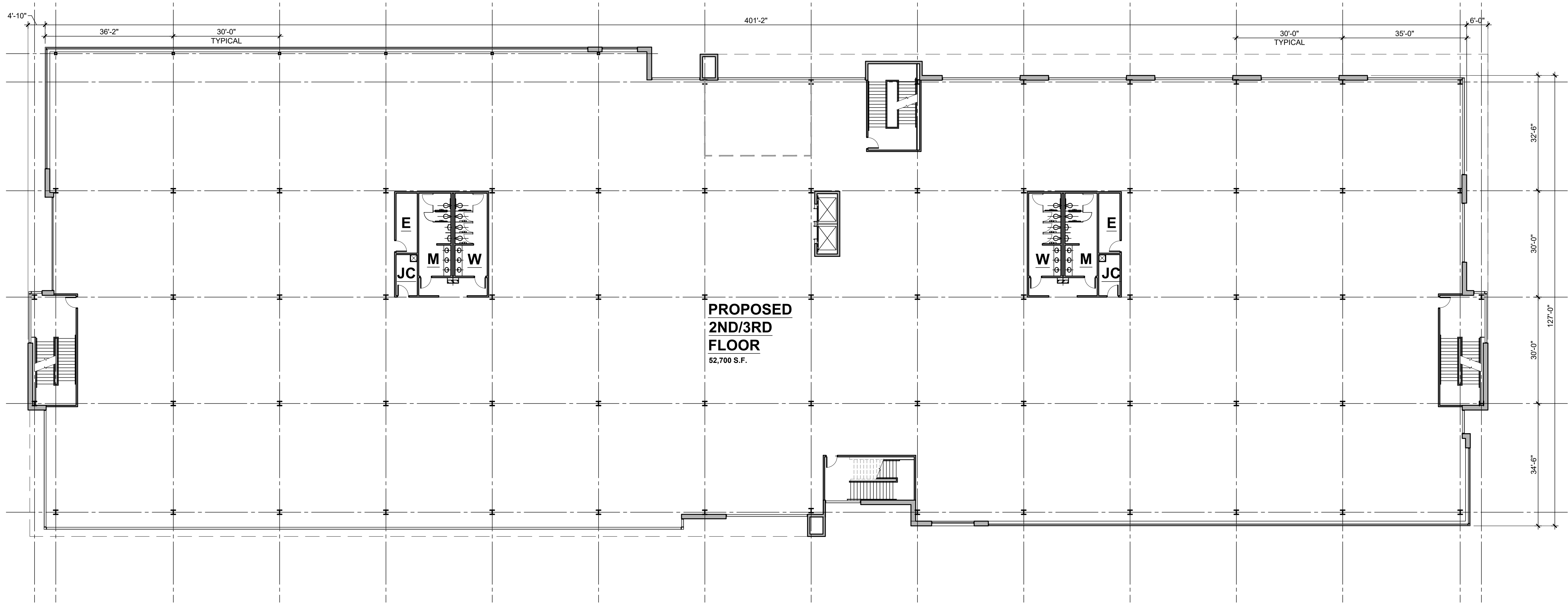
THIRD: 52,700 S.F. GROSS MINUS 1,295 S.F. PERIMETER WALL THICKNESS = 51,405 S.F.
OFFICE/LAB AREAS: 51,405 S.F. / 100 S.F. PER OCC. = 515 OCCUPANTS
TOTAL NUMBER OF OCCUPANTS = 1,520 OCCUPANTS

MINIMUM NUMBER OF EXITS:

-1,520 OCCUPANTS = 4 EXITS REQUIRED (MBC TABLE 1006.2.1)

4 EXITS PROVIDED



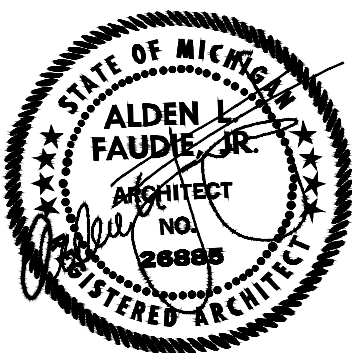


PROPOSED SECOND / THIRD FLOOR PLAN

SCALE: 1/16"=1'-0"



2



DATE: 6-29-20
ISSUED FOR: SITE PLAN RESUBMITTAL

DRAWING DATE: 6-29-20

PROJECT NUMBER: 19066

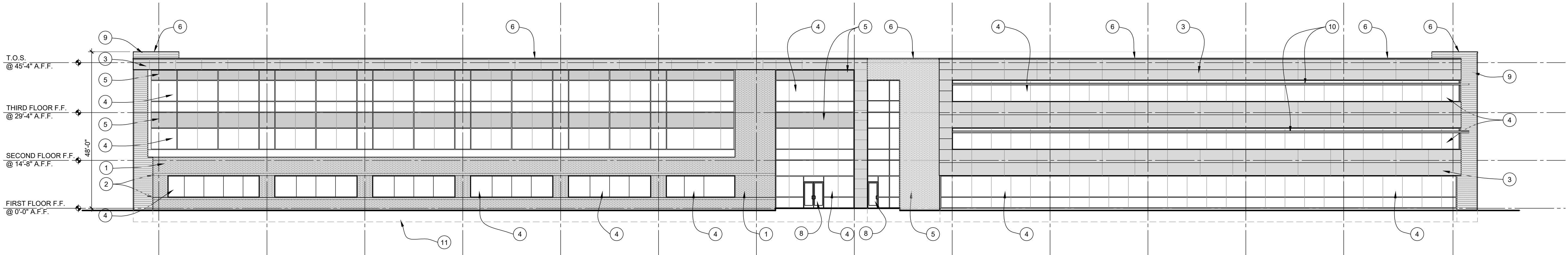
SHEET NUMBER: PFP-6B

PROJECT NAME: HILLSIDE 150K SPEC BUILDING (OPTION B)

HAMLIN RD
ROCHESTER HILLS, MI

FAUDIE ARCHITECTURE
Design to Inspire

26261 Evergreen Rd., Suite #123
Southfield, MI 48076 | 248.619.2354
www.faudiearchitecture.com



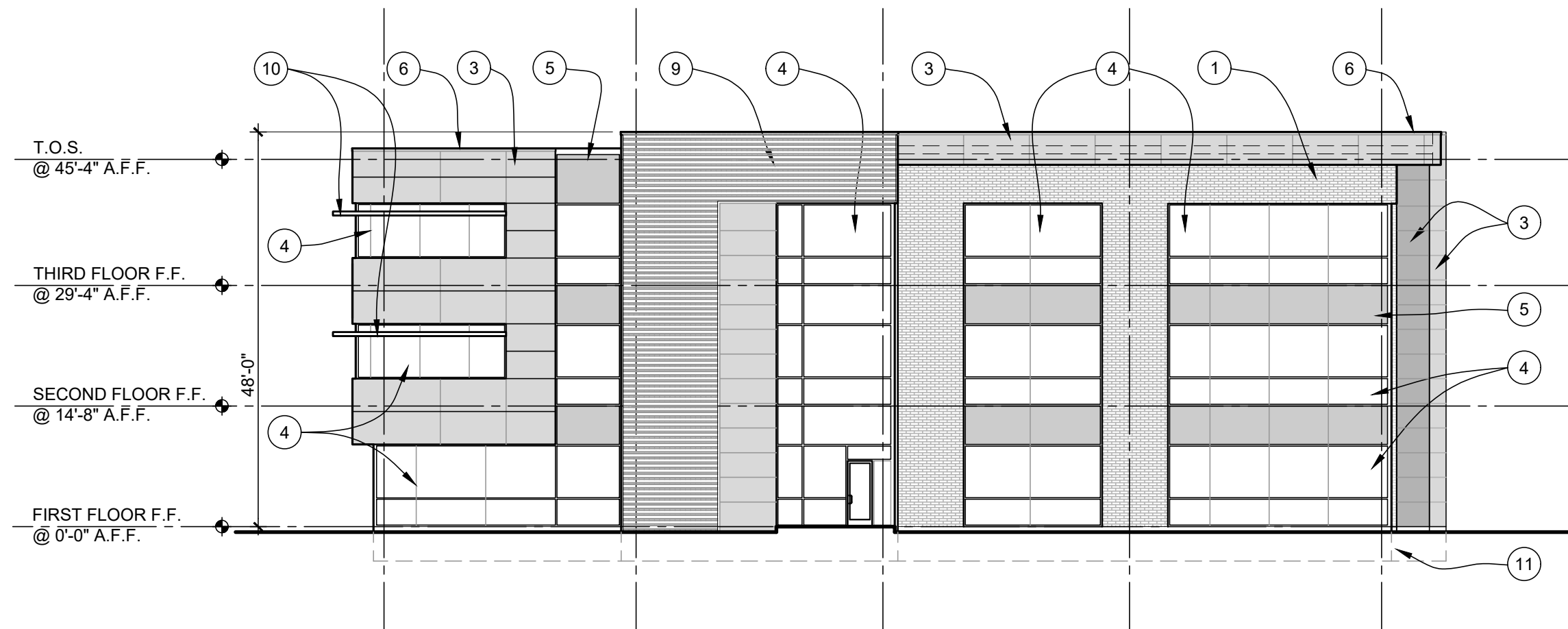
PROPOSED SOUTH ELEVATION

SCALE: 1/16"=1'-0"

4

EXTERIOR MATERIAL SCHEDULE

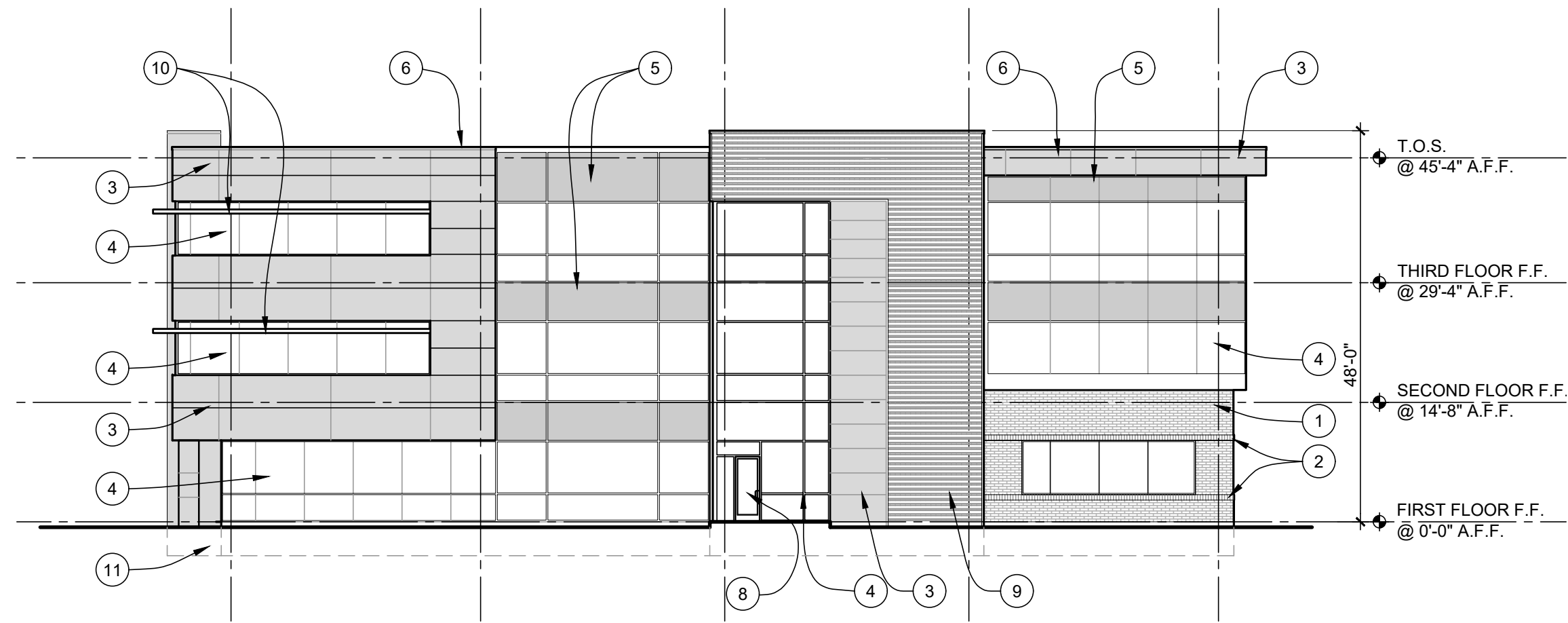
1	BRICK VENEER : FIELD COLOR: TBD
2	BRICK SOLDIER COURSE
3	ALUMINUM COMPOSITE METAL PANEL SYSTEM (ACM)
4	1" LOW 'E' INSUL. GLAZING IN CLEAR ANOD. ALUM. THERMAL BREAK FRAMES
5	1" TRANSLUCENT INSULATED SPANDREL GLAZING IN CLEAR ANOD. ALUM. THERMAL BREAK FRAMES
6	PREFINISHED METAL COPING
7	FLUSH METAL PANEL SIDING (ROOF SCREENING)
8	CLEAR ANOD. ALUM. ENTRY DOOR W/ TEMPERED GLASS
9	7.2 METAL PANEL
10	ALUM. SUN SHADE LOUVER
11	CONC. TRENCH FOOTING BELOW



PROPOSED EAST ELEVATION

SCALE: 1/16"=1'-0"

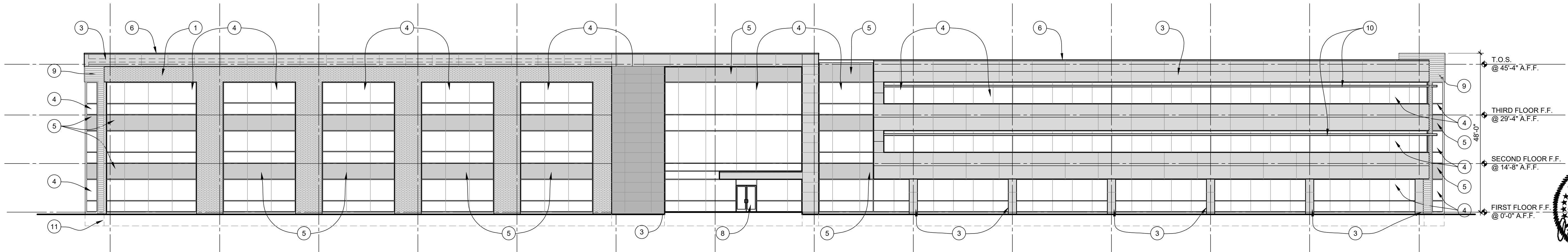
3



PROPOSED WEST ELEVATION

SCALE: 1/16"=1'-0"

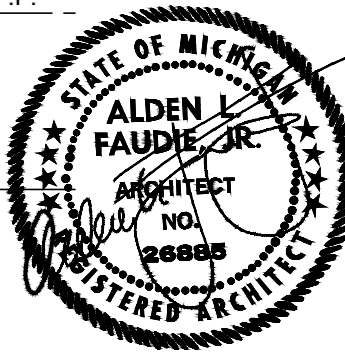
2



PROPOSED NORTH ELEVATION

SCALE: 1/16"=1'-0"

1



CODE COMPLIANCE CHART

APPLICABLE CODE REQUIREMENTS:

THIS BUILDING HAS BEEN DESIGNED IN ACCORDANCE WITH THE FOLLOWING:

- 2015 MICHIGAN BUILDING CODE (MBC)
- 2015 MICHIGAN PLUMBING CODE (MPC)
- 2015 MICHIGAN MECHANICAL CODE (MMC)
- 2017 NATIONAL ELECTRIC CODE WITH PART 8 AMENDMENTS (NEC)
- PART 10 MICHIGAN UNIFORM ENERGY CODE PART 10A RULES (ANSI/ASRAE 90.1-CODE 2015)
- MICHIGAN BARRIER FREE DESIGN LAW (PA 1 OF 1996 AS AMENDED), INCORPORATING THE 2012 MICHIGAN BUILDING CODE WITH ICC/ANSI A-117.1, 2009
- IFC 2015 INTERNATIONAL FIRE CODE
- NFPA 13-2013 FIRE SPRINKLER SYSTEM
- NFPA 72-2013 FIRE ALARM SYSTEM

OCCUPANCY CLASSIFICATION:

- USE GROUP 'B' (BUSINESS) / 'S-2' (PARKING GARAGE) SEPARATED MIXED USES.
USES ARE SEPARATED BY 1-HOUR FLOOR ASSEMBLIES PER TABLE 508.4.

CONSTRUCTION CLASSIFICATION:

- TYPE IIB (MBC 602.2)

FIRE SUPPRESSION REQUIREMENTS:

- BUILDING IS COMPLETELY PROTECTED BY AN APPROVED AUTOMATIC FIRE SUPPRESSION SYSTEM (MBC 903.2)
- CLASS I STANDPIPES WILL BE LOCATED IN EACH STAIRWELL (905.3.1) EXCEPTION #1

BUILDING AREA:

PARKING	=	50,475 S.F.
FIRST FLOOR	=	50,370 S.F.
SECOND FLOOR	=	52,700 S.F.
THIRD FLOOR	=	52,700 S.F.
TOTAL BUILDING AREA	=	206,245 S.F.

ALLOWABLE AREA:

OFFICE

- TYPE II B, MBC 506.2

- AREA ALLOWED = TABULAR AREA (INCL. SPRINKLER INCREASE) + FRONTAGE INCREASE
= TABULAR AREA At + (NS x IF)

- TABULAR AREA (At) ALLOWED (MBC TABLE 506.2, 'B-1' USE, 'II B' CONSTRUCTION) = 69,000 S.F.

- FRONTAGE INCREASE (If) ALLOWED (MBC 506.2)

$$IF = \left[\frac{\text{OPEN PERIMETER} - 0.25}{\text{TOTAL PERIMETER}} \right] \frac{W}{30}$$
$$= \left[\frac{1,082'-7" \text{ L.F.} - 0.25}{1,082'-7" \text{ L.F.}} \right] \frac{30}{30} = 100 \text{ [0.75] (1) } = 75\% \text{ INCREASE ALLOWED}$$

FIRST:		
TOTAL AREA ALLOWED	=	69,000 S.F. + (23,000 x .75)
	=	69,000 S.F. + 17,250 = 86,250 S.F.
TOTAL AREA ALLOWED	=	50,370 S.F. ACTUAL
	=	86,250 S.F. ALLOWED

SECOND:		
TOTAL AREA ALLOWED	=	69,000 S.F. + (23,000 x .75)
	=	69,000 S.F. + 17,250 = 86,250 S.F.
TOTAL AREA ALLOWED	=	52,700 S.F. ACTUAL
	=	86,250 S.F. ALLOWED

THIRD:		
TOTAL AREA ALLOWED	=	69,000 S.F. + (23,000 x .75)
	=	69,000 S.F. + 17,250 = 86,250 S.F.
TOTAL AREA ALLOWED	=	52,700 S.F. ACTUAL
	=	86,250 S.F. ALLOWED

TOTAL OFFICE AREA ALLOWED = 0.6 + 0.6 + 0.6 = 1.8

ALLOWABLE AREA:

PARKING

- TYPE II B, MBC 506.2

- AREA ALLOWED = TABULAR AREA (INCL. SPRINKLER INCREASE) + FRONTAGE INCREASE
= TABULAR AREA At + (NS x IF)

- TABULAR AREA (At) ALLOWED (MBC TABLE 506.2, 'S-2' USE, 'II B' CONSTRUCTION) = 78,000 S.F.

- FRONTAGE INCREASE (If) ALLOWED (MBC 506.2)

$$IF = \left[\frac{\text{OPEN PERIMETER} - 0.25}{\text{TOTAL PERIMETER}} \right] \frac{W}{30}$$
$$= \left[\frac{1,082'-7" \text{ L.F.} - 0.25}{1,082'-7" \text{ L.F.}} \right] \frac{30}{30} = 100 \text{ [0.75] (1) } = 75\% \text{ INCREASE ALLOWED}$$

TOTAL AREA ALLOWED	=	78,000 S.F. + (26,000 x .75)
	=	78,000 S.F. + 19,500 = 97,500 S.F.
TOTAL AREA ALLOWED	=	50,475 S.F. ACTUAL
	=	97,500 S.F. ALLOWED

TOTAL BUILDING AREA ALLOWED = 1.8 (OFFICE) + 0.5 (PARKING) = 2.3 TOTAL
= 2.3 PROPOSED < 3 ALLOWED

ALLOWABLE BUILDING HEIGHT:

- USE 'B', TYPE IIB: 75 FEET, 4 STORIES (MBC TABLE 504.3, 504.4)
PROPOSED BUILDING IS 61'-0", FOUR STORY - ACCEPTABLE

OCCUPANCY:

- PER MBC (MBC TABLE 1004.1.2)

PARKING: 50,475 S. F. GROSS MINUS 1,428 S.F. PERIMETER WALL THICKNESS = 49,047 S.F.
PARKING GARAGE AREAS 49,047 S.F. / 200 S.F. PER OCC. = 246 OCCUPANTS

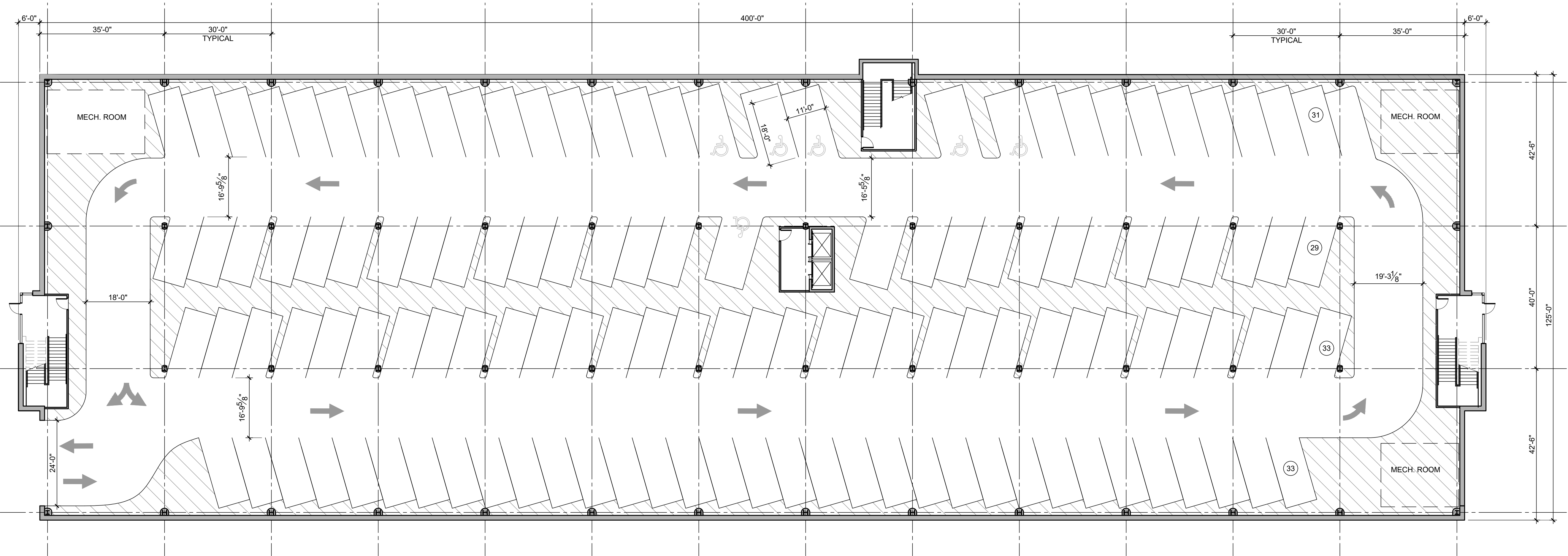
FIRST: 50,370 S.F. GROSS MINUS 1,380 S.F. PERIMETER WALL THICKNESS = 48,990 S.F.
OFFICE/LAB AREAS: 48,990 S.F. / 100 S.F. PER OCC. = 490 OCCUPANTS

SECOND: 52,700 S.F. GROSS MINUS 1,295 S.F. PERIMETER WALL THICKNESS = 51,405 S.F.
OFFICE/LAB AREAS: 51,405 S.F. / 100 S.F. PER OCC. = 515 OCCUPANTS

THIRD: 52,700 S.F. GROSS MINUS 1,295 S.F. PERIMETER WALL THICKNESS = 51,405 S.F.
OFFICE/LAB AREAS: 51,405 S.F. / 100 S.F. PER OCC. = 515 OCCUPANTS
TOTAL NUMBER OF OCCUPANTS = 1,766 OCCUPANTS

MINIMUM NUMBER OF EXITS:

- 1,766 OCCUPANTS = 4 EXITS REQUIRED (MBC TABLE 1006.2.1)
4 EXITS PROVIDED

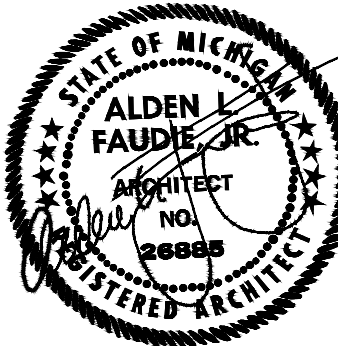


PROPOSED PARKING DECK PLAN

SCALE: 1/16"=1'-0"



1



PROJECT NAME:

HILLSIDE 150K SPEC BUILDING (OPTION B)

HAMLIN RD
ROCHESTER HILLS, MI

DATE: ISSUED FOR:

6-29-20 SITE PLAN RESUBMITTAL

DRAWING DATE:

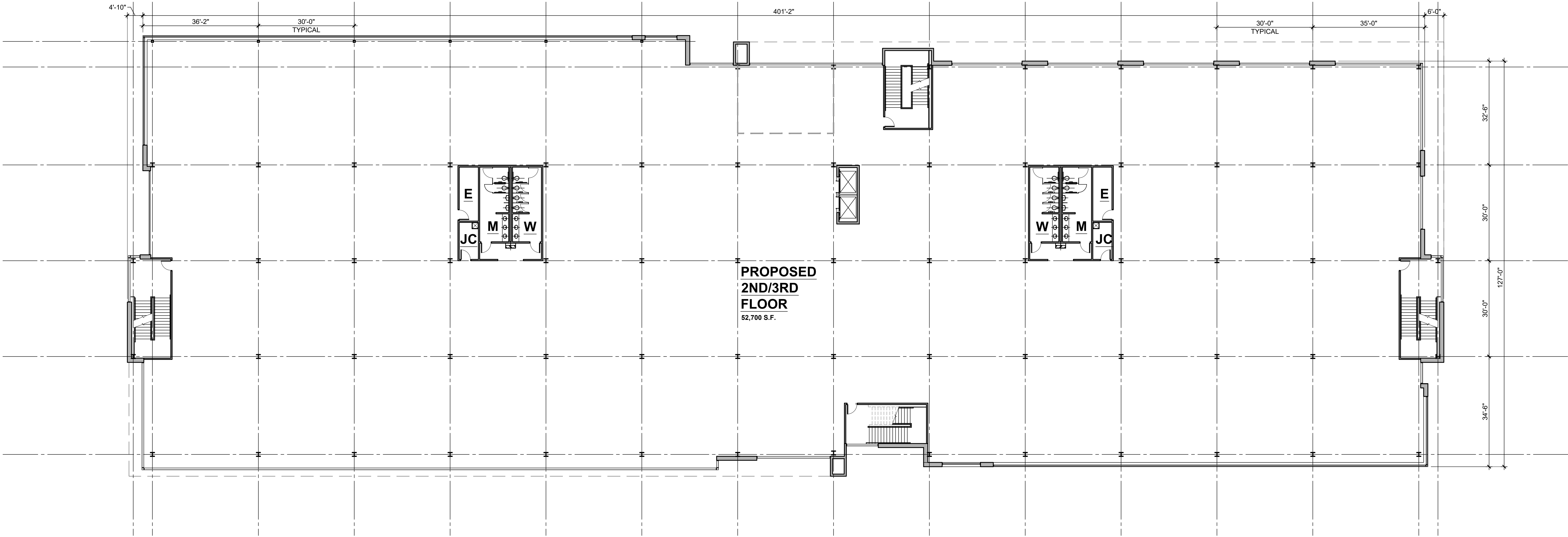
6-29-20

PROJECT NUMBER:

19066

SHEET NUMBER:

FPF-5A

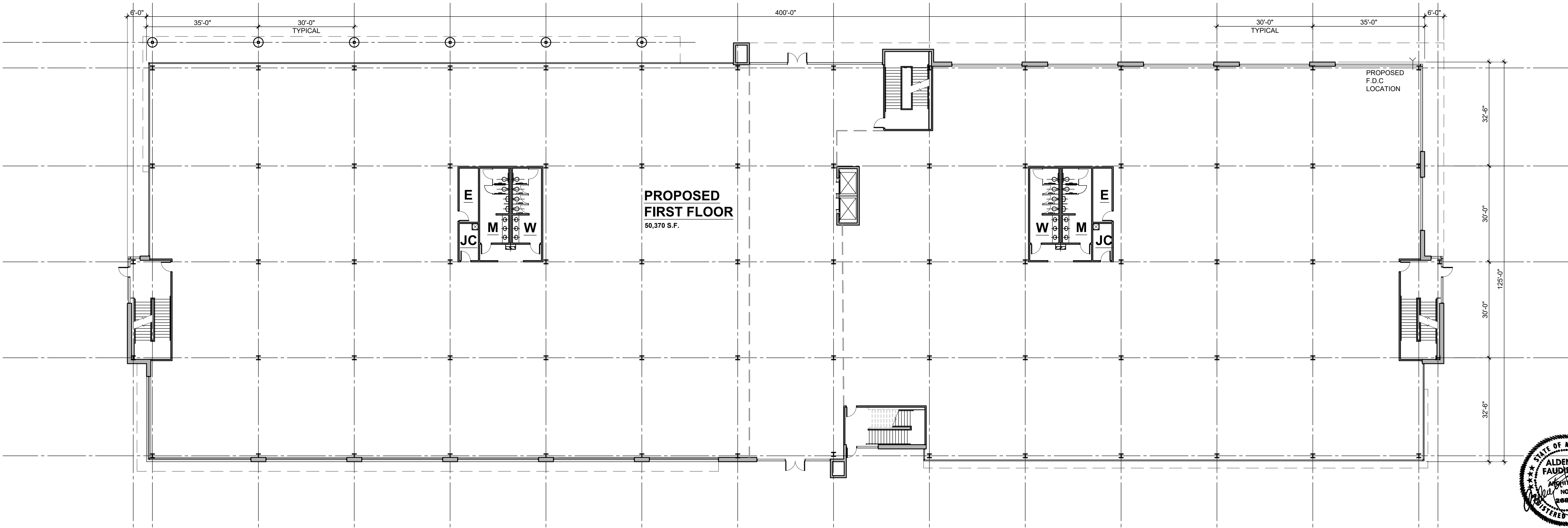


PROPOSED SECOND / THIRD FLOOR PLAN

SCALE: 1/16"=1'-0"



2

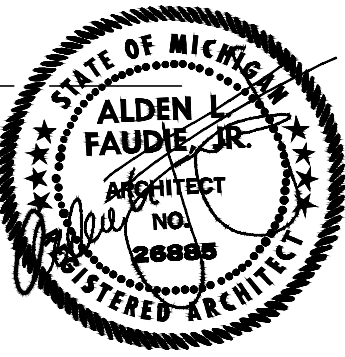


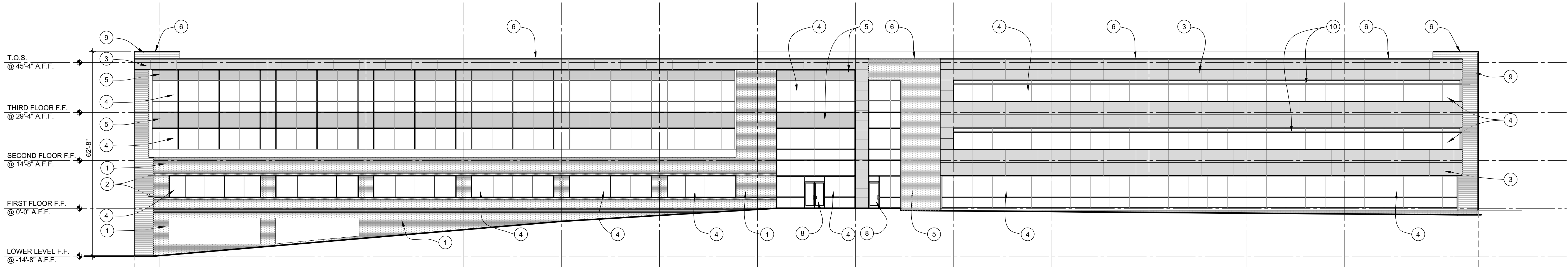
PROPOSED FIRST FLOOR PLAN

SCALE: 1/16"=1'-0"



1





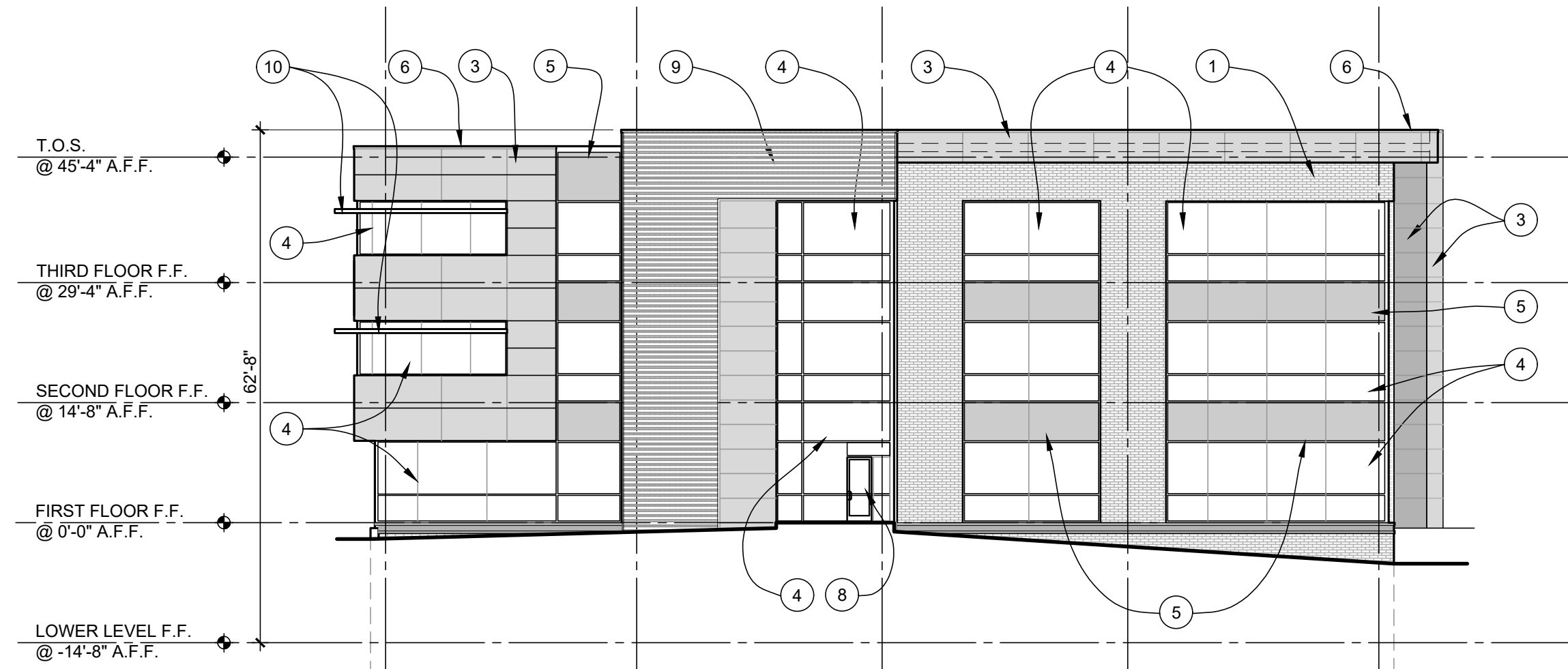
PROPOSED SOUTH ELEVATION

SCALE: 1/16"=1'-0"

4

EXTERIOR MATERIAL SCHEDULE

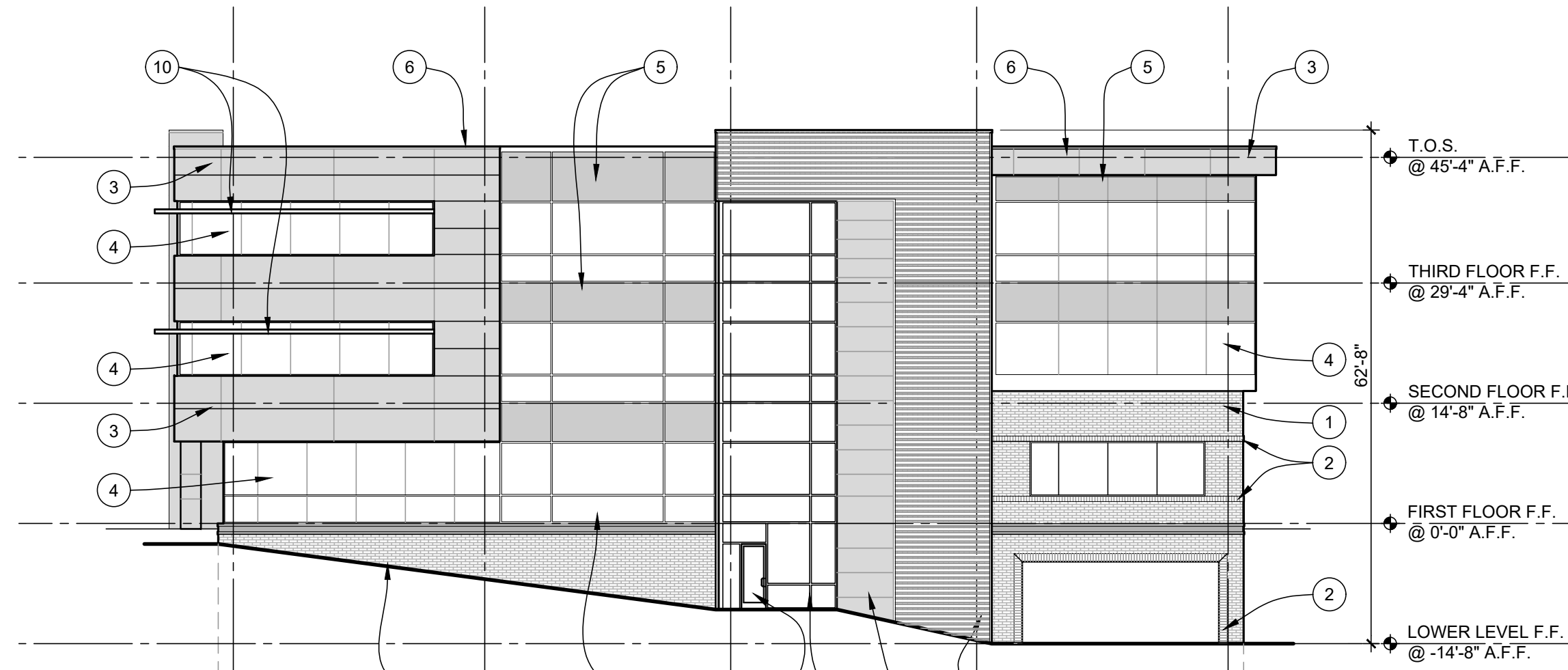
1	BRICK VENEER : FIELD COLOR: TBD
2	BRICK SOLDIER COURSE
3	ALUMINUM COMPOSITE METAL PANEL SYSTEM (ACM)
4	1" LOW 'E' INSUL. GLAZING IN CLEAR ANOD. ALUM. THERMAL BREAK FRAMES
5	1" TRANSLUCENT INSULATED SPANDREL GLAZING IN CLEAR ANOD. ALUM. THERMAL BREAK FRAMES
6	PREFINISHED METAL COPING
7	FLUSH METAL PANEL SIDING (ROOF SCREENING)
8	CLEAR ANOD. ALUM. ENTRY DOOR W/ TEMPERED GLASS
9	7.2 METAL PANEL
10	ALUM. SUN SHADE LOUVER
11	CONC. TRENCH FOOTING BELOW



PROPOSED EAST ELEVATION

SCALE: 1/16"=1'-0"

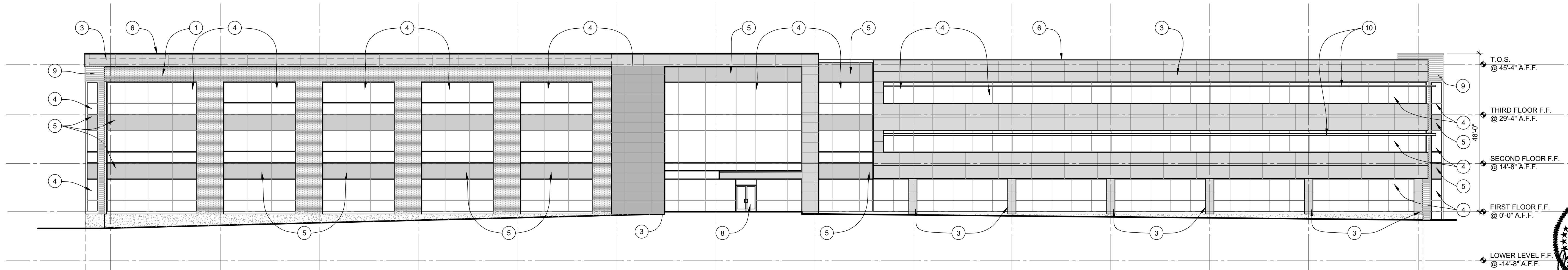
3



PROPOSED WEST ELEVATION

SCALE: 1/16"=1'-0"

2



PROPOSED NORTH ELEVATION

SCALE: 1/16"=1'-0"

1

