

KiddieKlub

7/20/2018

KiddieKlub – 1812 S Rochester Road

Purposed Playground Plan

- 1.1 - 18'x12' Rubber Mulch Bed
- 1.2 - 28'x35' Rubber Mulch Bed with Play Structure

- 2.1 - 15'x28' Synthetic Grass/Turf w Gazebo
- 2.2 - 12'x26' Synthetic Grass/Turf
- 2.3 - 18'x26' Synthetic Grass Turf
- 2.4 - 4' Synthetic Grass/Turf Walkway to Gate Exit

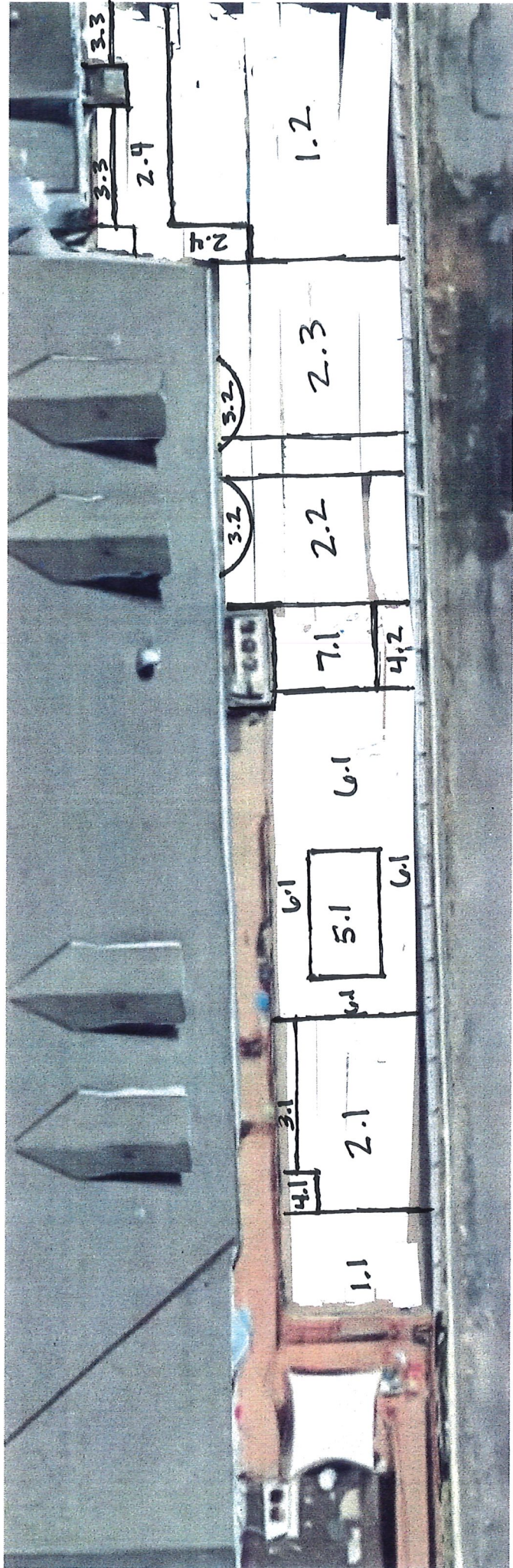
- 3.1- 4'x20' Flower Bed
- 3.2 - 4'x7' Half Moon Flower Bed
- 3.3 - 4'x22' Flower Bed

- 4.1 - 6'x8' Sand Box
- 4.2 - 8'x12' Sand Box

- 5.1 - 8'x16' Mulch/Wood Yard

- 6.1 - Cement/Asphalt/Paver Path

- 7.1 - Sensory path/Hopscotch area





1.1
1.2

GroundSmart™ Rubber Mulch Playground/Play Area Installation Instructions

For 10', 12' and 16' of Critical Fall Height Protection as measured by ASTM F1292-13

BACKGROUND

GroundSmart™ Rubber Mulch is IPEMA certified to provide up to 16' of critical fall height protection per ASTM F1292-13. The critical fall height protection offered by GroundSmart™ Rubber Mulch is dependent upon its installed, compacted depth. GroundSmart™ Rubber Mulch is currently IPEMA certified per ASTM F1292-13 at the following critical fall heights for compacted depths of 4", 5" and 6":

IPEMA Fall Height Protection Per ASTM F1292-13	GroundSmart™ Rubber Mulch Depth	
	Un-compacted	Final Compacted Depth
10'	5"	4"
12'	6"	5"
16'	7"	6"

PLAYGROUND DESIGN AND FALL ZONES

A landscape architect or certified engineer involved in the playground design and planning process should be consulted regarding the topography of the installation area.

Proper drainage, preventing water from accumulating in the play area, must be maintained. In order to ensure proper drainage factors such as climate, soil conditions, and the overall topography of the installation site need to be considered.

Proper fall zone guidelines need to be followed in the design and installation process to ensure that all fall zones are adequately addressed with the recommended installed depth for the height of the structures being installed. The fall zone is the area under and around the equipment where protective surfacing is required and should extend a minimum of six feet in all directions from the perimeter of the equipment per the Consumer Product Safety Commission Playground Safety Guidelines. The following ASTM standards also contain information on fall zone locations and designs:

- ASTM 1292-13 Standard Specification for Impact Attenuation of Surfacing Materials Within the Use Zone of Playground Equipment
- ASTM F1487-11 Standard Consumer Safety Performance Specification for Playground Equipment for Public Use.

GROUND PREPARATION

Installation area must be properly prepared prior to installation of GroundSmart™ Rubber Mulch.

The area where GroundSmart™ Rubber Mulch will be installed must be graded for proper drainage with a substrate that is compacted to provide a firm, even base.

Installation of a commercial grade geotextile landscape fabric is recommended under GroundSmart™ Rubber Mulch. Seam overlap needs to be a minimum of three inches and all seams need to be properly secured to prevent dirt or other substrate material from mixing with the safety surfacing. Additionally the landscape fabric needs to be properly secured at the perimeter and around all installed equipment posts or polls. If stone or other material is used as part of a drainage system then the use of landscape fabric is also recommended in order to ensure that the materials do not mix.

If GroundSmart™ Rubber Mulch will be installed above grade, use of a retaining system is highly recommended to reduce migration of GroundSmart™ Rubber Mulch outside of the designated area and to help maintain a level, compacted play area.

When installing over hard surfaces such as asphalt or concrete, follow the November 2010 Consumer Product Safety Commission Publication 325 Public Playground Safety Handbook section 2.4.2.3 Installing loose-fill over hard surface. This guideline recommends that immediately over the hard surface there should be a 3- to 6-inch base layer of loose-fill (e.g., gravel for drainage). The next layer should be a Geotextile cloth. GroundSmart™ Rubber Mulch should be installed directly over this layer.



Embedded in the GroundSmart™ Rubber Mulch should be impact attenuating mats under high traffic areas, such as under swings, at slide exits, and other places where displacement is likely.

Prior to installing GroundSmart™ Rubber Mulch the area must be cleared of all grass, wood chips, rocks, stumps, gravel, or any other type of debris.

DELIVER, RECEIPT & UNLOADING OF GROUNDSMART™ RUBBER MULCH

GroundSmart™ Rubber Mulch is packaged in 1,000 lb or 2,000 lb super sacks strapped to a pallet or 98 0.8 cu ft poly bags packaged and shrink wrapped with 98 bags per pallet.

Delivery can be either via a lift gate truck, van trailer or flatbed trailer. The choice is delivery type must be pre-arranged. Van trailer delivery is the standard service. With both van trailer and flatbed delivery, unloading equipment must be provided at the project site. Unloading equipment must have the capacity to lift up to 2,000 lbs either lifting by the pallet with forks (for super sacks and poly bags) or hoisting from the super sack straps. The trucking company will not move pallets to the rear of the trailer, as such it is recommended to have a pallet jack available at the project site. The lift gate delivery service is limited to deliveries of 8 tons or less and the truck driver will unload the product “curbside” from the truck. Curbside is defined as delivery to a receiving area/dock for a business and to the curb at the end of your driveway for a residential delivery.

INSTALLATION OF MATERIAL

Install GroundSmart™ Rubber Mulch at a uniform level throughout the playground. Any variety of method can be used for spreading the mulch including blowing, shoveling and raking. Care should be taken to not disturb the substrate material and/or landscape fabric if used.

The amount of GroundSmart™ Rubber Mulch used per square foot is dependent upon on the required fall height rating of the playground equipment. GroundSmart™ Rubber Mulch is IPEMA certified to provide up to 16’ of critical fall height protection per ASTM F1292-13. To achieve a maximum fall heights when installed in fall zones of a playground, the following depths and ratios must be followed:

Fall Height Protection Per ASTM F1292-13	GroundSmart™ Rubber Mulch Depth		Weight per Sq Ft Compacted
	Un-compacted	Final Compacted Depth	
10'	5"	4"	10.9 lbs
12'	6"	5"	13.1 lbs
16'	7"	6"	15.3 lbs

Proper compaction can be achieved by using a lawn roller. Once the GroundSmart™ Rubber Mulch is raked and leveled into place, the lawn roller can be pulled directly over the surface. It is recommended to roll the roller across the surface in multiple directions. If low or high spots develop while compacting the surface, material can be added into the low areas and/or raked away from the high areas and compacted again.

To reduce maintenance in high use areas where critical fall height protection is not required, rubber mats may be used. Mats can be placed under or on top of GroundSmart™ Rubber Mulch.

REGULAR MAINTENANCE

In order to provide maximum head impact protection and accessibility of the playground, maintenance is required. A level, compacted depth of GroundSmart™ Rubber Mulch must be maintained.

Upon discovery of a thin, un-compacted or non-level condition, the surface of the playground area must be raked and compacted to ensure consistent and proper installed depths.

Periodic replenishment may be required if GroundSmart™ Rubber Mulch has migrated outside of the play area, cannot be reclaimed and a level compact depth for the required fall height protection cannot be achieved.

GroundSmart™ Playground Rubber Mulch helps improve playground and play area safety for children of all ages. GroundSmart™ Playground Rubber Mulch is uniquely designed and manufactured to not only meet, but exceed today's playground safety standards and guidelines.

Nearly 114,000 children in the US go to emergency rooms every year due to falls onto the play surface at public playgrounds. Even more alarming is that nearly 5,500 children under the age of four suffer a traumatic brain injury on a playground. Additionally, playground related injuries among children fourteen and younger cost an estimated \$1.2 billion annually.

When compared with other playground safety surfaces, GroundSmart™ Playground Rubber Mulch cushions a child's fall and provides up to 2.5 times more fall height protection than grass, dirt, sand, pea gravel, wood mulch, engineered wood fiber (EWF), rubber tiles or poured in place surfaces. The Consumer Products Safety Commission (CPSC) recommends the use of Rubber Mulch as a playground safety surface.

Fall Height Protection Heights By Surface Material

Compressed Loose-Fill Surfacing Depths

Safety Surfacing Depth (Compacted Depth)	Material (Loose-Fill)	Fall Height Protection
6"	GroundSmart™ Rubber Mulch	Up to 16 ft.
5"	GroundSmart™ Rubber Mulch	Up to 12 ft.
4"	GroundSmart™ Rubber Mulch	Up to 10 ft.
9"	Wood Chips*	Up to 10 ft.
9"	Wood Mulch (Non-CCA)*	Up to 7 ft.
9"	Pea Gravel*	Up to 5 ft.
9"	Sand*	Up to 4 ft.

* CPSC Public Playground Safety Handbook, Publication #325, Nov 2010

GroundSmart™ Playground Rubber Mulch meets the criteria required by the International Play Equipment Manufacturers Association (IPEMA) for certification as a playground or play area safety surface and wheelchair accessibility.



- American Society for Testing and Materials (ASTM) F1292-13
- American Society for Testing and Materials (ASTM) F1951-99
- American Society for Testing and Materials (ASTM) F3012

GroundSmart™ Playground Rubber Mulch helps create safer, smarter playgrounds that are ready for play 365 days a year, year after year.

Playground Rubber Mulch Features and Benefits

- Creates safer playgrounds
- Reduces injuries from falls
- IPEMA certified for critical fall height protection (ASTM F1292-13)
- Recommended by the Consumer Product Safety Commission "CPSC" for use as a playground safety surface
- Meets Americans with Disabilities Act "ADA" accessibility standards as playground safety surface (ASTM F1951-99)
- Up to 60% savings versus engineered wood fiber (EWF) or wood mulch in playground or play area applications
- 12 year Color-Lock guarantee
- Inhibits growth of mold and fungi, reducing allergy risk
- Saves time and money by eliminating annual mulching
- Requires up to 50% less material than engineered wood fiber (EWF) or wood mulch
- Helps prevent weeds

- Does not attract termites, carpenter ants or other harmful wood destroying insects
- Resists rodent infestation
- Does not float, absorb water, erode or blow away with heavy wind or rain
- Will not rot unlike engineered wood fiber (EWF) or wood mulch
- 100% Recycled Rubber
- 99.9% Wire Free
- Non-toxic



SPECS & PRODUCT DETAILS



CustomPlaygroundEquipment.com
800-242-0039

Rad Race

MODEL # CPA-282

CATEGORY: Commercial Play Structures

MPN: PKP010X



NEUTRAL COLOR SCHEME



PRIMARY COLOR SCHEME



DESCRIPTION:

Rad Race suits a large age range of kids, making it perfect for parks & religious organizations. Available in Primary or Neutral color schemes - Quick Shipping, too!

SPECIFICATIONS:

Minimum Use Zone:	25' 8" x 34' 11"
Capacity:	36 children
Designed For Ages:	2 - 12 yrs
Maximum Fall Height:	60"
Weight:	2300 lbs.

FEATURES:

- Single Right Turn Playground Slide
- Single Straight Playground Slide
- ADA Playground Stairs
- Arch Climber
- Pebble Pod Hop Climber
- Square Loop Climber
- Playscape Bones Bridge
- Double Bongo Drums
- Playground Ship's Wheel
- Store Front Playset Adventure Panel
- Tic-Tac-Toe Playground Games
- Wheels-on-the-Bus Play Panel
- 60" Deck Height
- 36" Deck Height

USE ZONE

25' 8" x 34' 11"

AGES

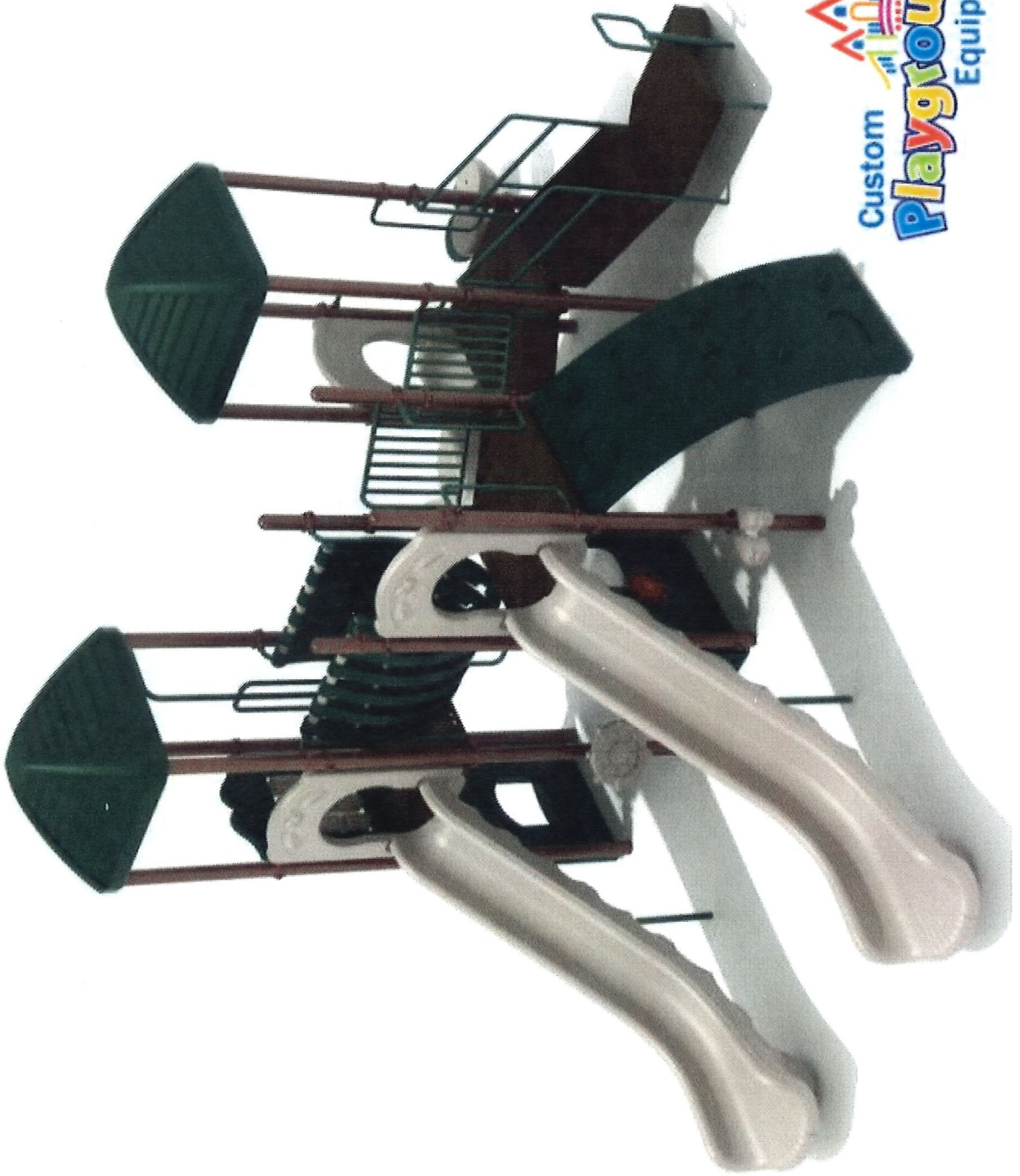
2 - 12 yrs

MSRP

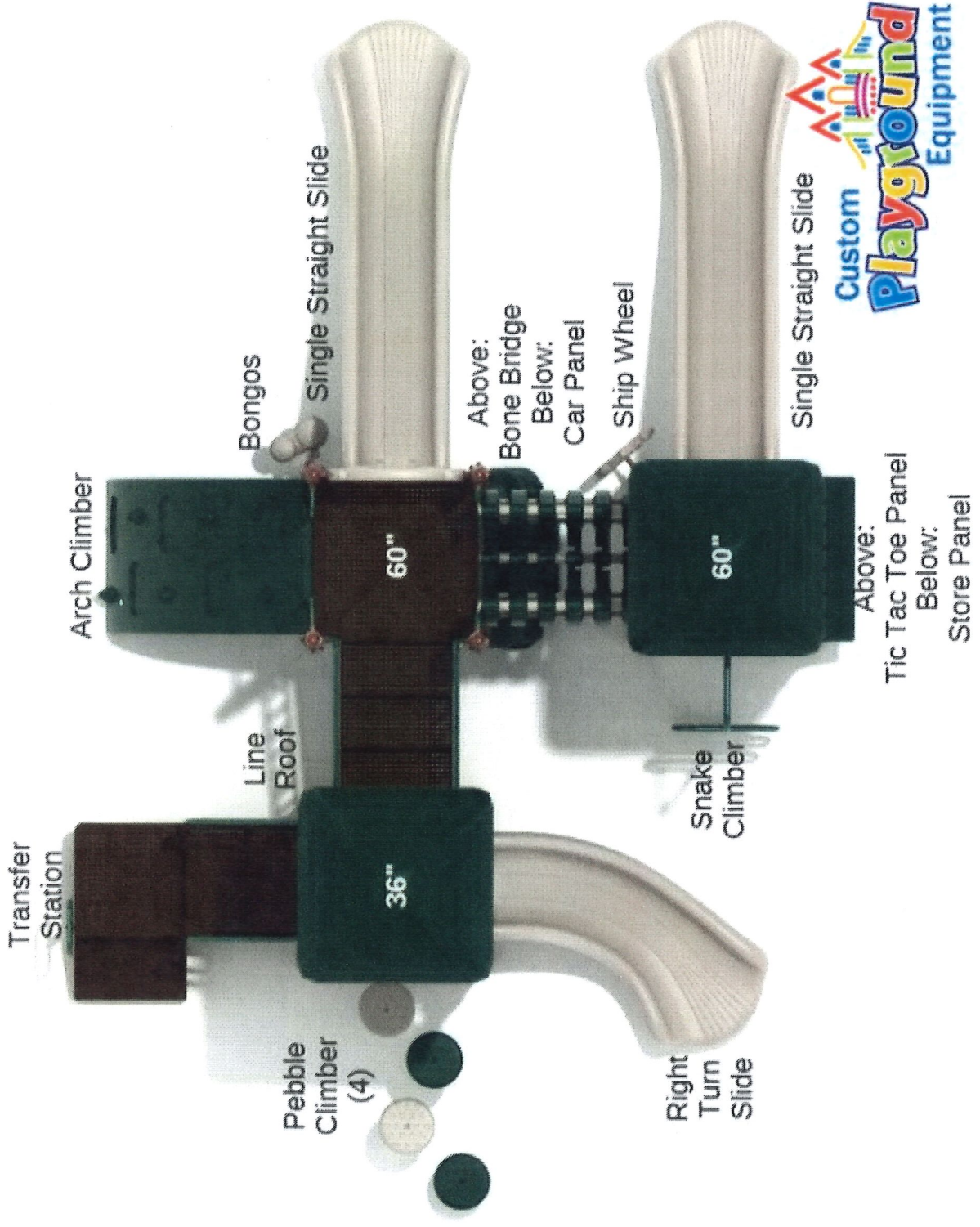
\$15,995.00

PRICE

\$15,995.00



Custom
Playground
Equipment



Synthetic Grass Lawn Turf FAQs

2.1
2.2
2.3
2.4

What is a synthetic lawn?

A synthetic grass lawn is an outdoor landscaping option that allows you to have a beautiful, natural looking, perfectly green lawn month-after-month, year-after-year - without the hassle! You don't have to worry about mowing, fertilizing, watering, applying pesticides or any other type of growth and health lawn maintenance. It's unbelievable how realistic our artificial lawn products look - give us a call and we'll show you our broad variety of turf options.

[back to top](#)

How is a synthetic lawn installed?

In general terms, there are four steps to the process. First, we provide the design and site preparation which may consist of removing existing landscaping. Second, we prepare the sub-base which may include an aggregate base for drainage and a finer base for shaping and achieving a smooth service. The third step involves installing the actual lawn turf. Lawn turf comes on 15 ft rolls (like carpet). The turf is seamed as required, cut to shape and pinned using a variety of landscaping pins and stakes. Finally, the infill materials are installed to support the fibers and to serve as a ballast for the lawn system.

[back to top](#)

Why does the lawn turf require an infill?

All quality lawn turfs require an infill to help support the turf fibers. This is required to achieve the aesthetic characteristic of the lawn blades standing up as they do with a natural grass lawn. In addition to the aesthetic value, the turf fibers are supported and protected by the infill system and the infill acts as a weighting agent for the lawn system. The most popular infill option is a combination of sand and rubber. The rounded sand provides excellent weighting and won't damage the turf fibers. The rubber portion of the mixed infill results in a natural, comfortable feeling as you walk, play, or sit on your lawn. We also offer a high-tech infill product that can reduce the surface temperature of your synthetic lawn during hot summer months.

[back to top](#)

Are synthetic lawns good with kids and pets?

Absolutely - they are perfect. Whereas natural grass lawns are difficult to keep looking nice with frequent play by children and pets - a Putters Edge artificial grass lawn system will always look perfect and will withstand the impact of heavy use. Our lawn turfs drain, so that water and pet accidents will wash right through. The synthetic turf fibers and the infill are made of materials that will not absorb or retain pet waste odors. Your synthetic lawn can be washed with a garden hose and a periodic raking will ensure that the blades are standing up nicely - the perfect lawn.

[back to top](#)

Will the lawn fade under our intense Michigan sun?

Our synthetic grass lawn turfs carry an 8-year warranty against excessive fading. The artificial lawn blades have the UV-treatment built into the blade itself - it's mixed with the polyethylene while it's still in liquid form. So, you don't have to apply any type of spray-on UV treatment as with some artificial turf products. Will the turf fade? - technically yes, practically no. The shade of green will change slightly after several years - but you won't be able to distinguish the change with the naked eye. In fact, the Greenskeeper Golf's synthetic lawn turf actually becomes even more natural looking over time.

[back to top](#)

[back to top](#)

How long will the synthetic lawn last?

Greenskeeper Golf's lawn turfs come with an 8-year limited warranty. Under normal residential conditions, the actual life expectancy is 15-25 years.

[back to top](#)

What kind of maintenance does the synthetic lawn require?

A light raking (plastic) or brooming (soft bristle) are recommended on a periodic basis to keep the blades standing nicely and looking their best. If the lawn is primarily decorative (light traffic) then the brooming or raking frequency will be less. A leaf blower can be used to remove leaves, twigs, etc.

[back to top](#)

Synthetic lawns & putting greens: Are they good for the Michigan environment?

Absolutely - an emphatic and resounding YES! Water is a precious resource around Greater Detroit and we are all well aware of the significant efforts to ensure that we use our water resources wisely. With a Putters Edge synthetic lawn or putting green, you get the functional and aesthetic beauty of a natural-looking Michigan grass landscape - without the water consumption.

[back to top](#)

Where can it be installed? Is there flexibility in size and shapes?

Your Putters Edge artificial lawn can be installed in just about any location imaginable - including all those places where you would install natural grass. Since synthetic grass lawn turf is installed like carpet, the lawn can be cut to fit or shape any areas - around pools, flower beds, decking, walkways, etc. There are virtually no limits to where your new artificial lawn can be placed and how it can be shaped.

12' x 14' WOOD GAZEBO

with ALUMINUM ROOF

Installation and Operating Instructions – YM12941



HEIGHT:
10'5" / 3.175m



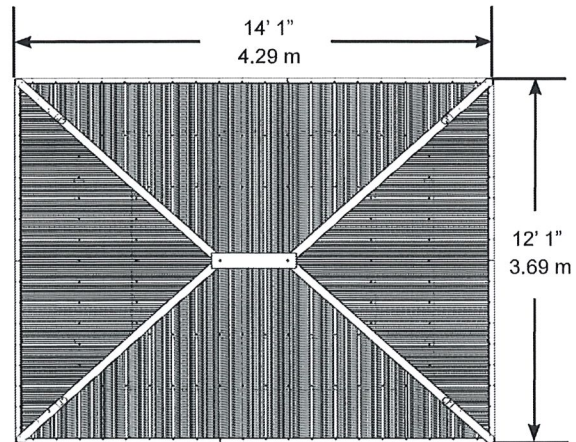
<http://bit.ly/gazeboinstall>

Revised 12-28-2016



Yardistry – North America
 Toll Free Customer Support: 1.888.509.4382
info@yardistrystructures.com
www.yardistrystructures.com

Yardistry / Selwood Products – Europe
 Customer Support: +44 1284 852569
parts@selwoodproducts.com
www.selwoodproducts.com



PRODUCT OVERVIEW

ASSEMBLY

WARRANTY

DIMENSIONS

WHERE TO BUY

Expand your outdoor living space with the 12 x 14 Wood Gazebo with Aluminum Roof by Yardistry. The Wood Gazebo with Aluminum Roof adds character to any area, creating the perfect setting for all your outdoor entertainment needs. The stunning design features a Montana bronze aluminum roof, 6 in. x 9 in. posts finished with classic plinths, and sleek curved gussets. The 100% FSC® Certified Cedar Lumber is finished with a beautiful mocha brown stain that brings a warmth and distinctive feel to any space. The illustrated step-by-step instructions and the helpful hints video will guide you through every step of the installation. The 12 x 14 Wood Gazebo with Aluminum Roof is a multi-functional product that is perfect for any outdoor space.

FEATURES:

- Built using 100% FSC® Certified Cedar Lumber
- Stunning Montana Bronze aluminum roof
- 6" x 9" Posts with classic plinths
- Sleek curved gussets
- Pre-cut, pre-drilled and pre-stained in a beautiful, environmentally friendly, Mocha Brown stain
- Overall Dimensions (L x W x H): 14.1' x 12.1' x 10.4'
- Base Dimensions (L x W): 12' 10 3/8" x 10' 10 3/8"

PACKAGING:

The Wood Gazebo with Aluminum Roof come in 3 packages

Box 1: 104 1/2" L x 44 1/2" W x 5" H = 248 lbs

Box 2: 104 1/2" L x 22 1/4" W x 9 1/2" H = 221 lbs

Box 3: 104 1/2" L x 22 1/4" W x 9 1/2" H = 214 lb

2.1

