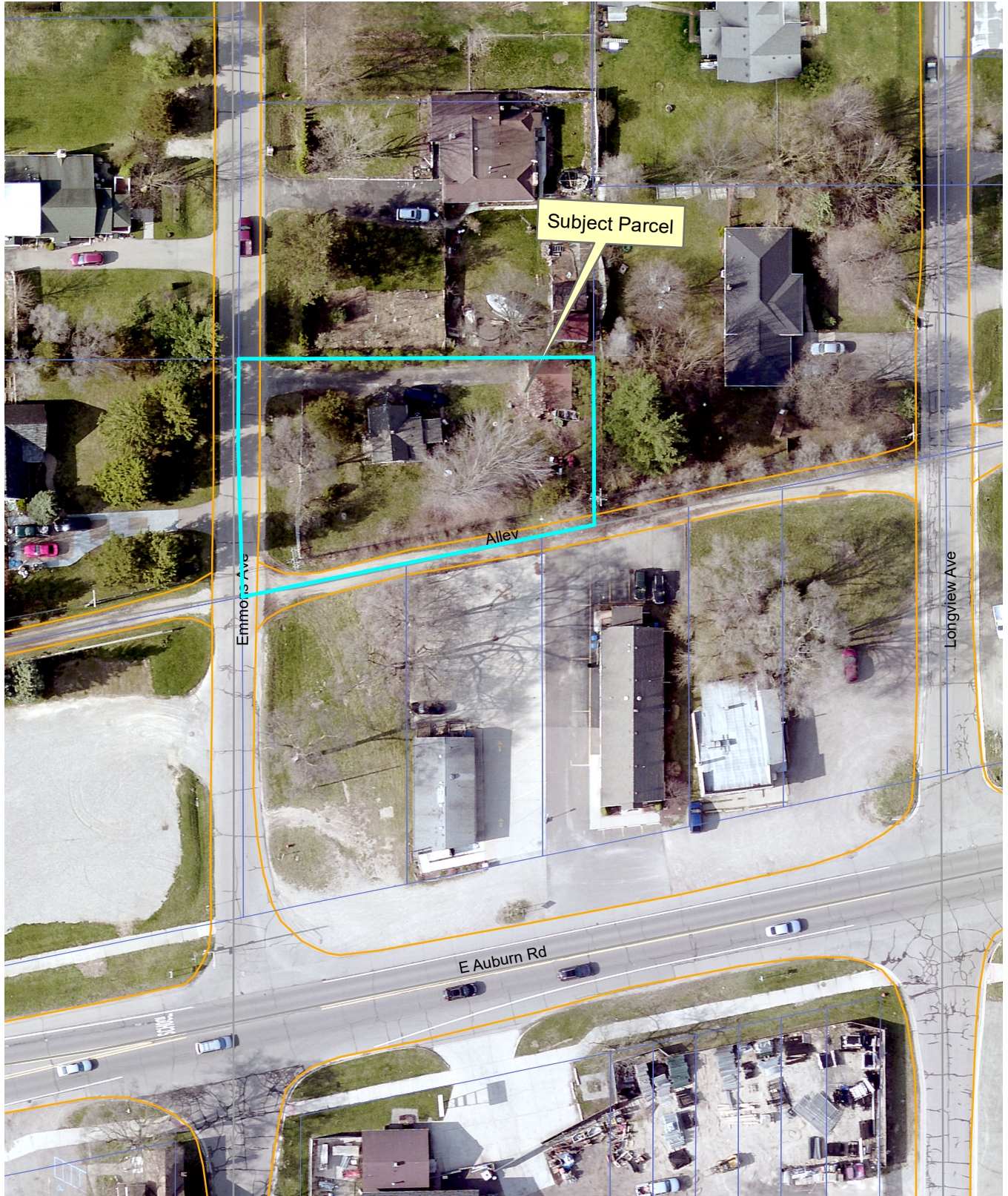


Location Map 2905 Emmons Ave.



Legend

	Parcel 999 Street View
	Parcel 101
	Parcel 102
	Parcel 103
	Parcel 104
	Parcel 105
	Parcel 106
	Parcel 107

Aerial photographs as of April 2015
 TaxParcel lines were obtained on 2/17/17 from Oakland County.
 Although the information provided by this map is believed to be reliable, its accuracy is not warranted in any way. The City of Rochester Hills assumes no liability for any claims arising from the use of this map.

5/1/17

1 inch = 67 feet