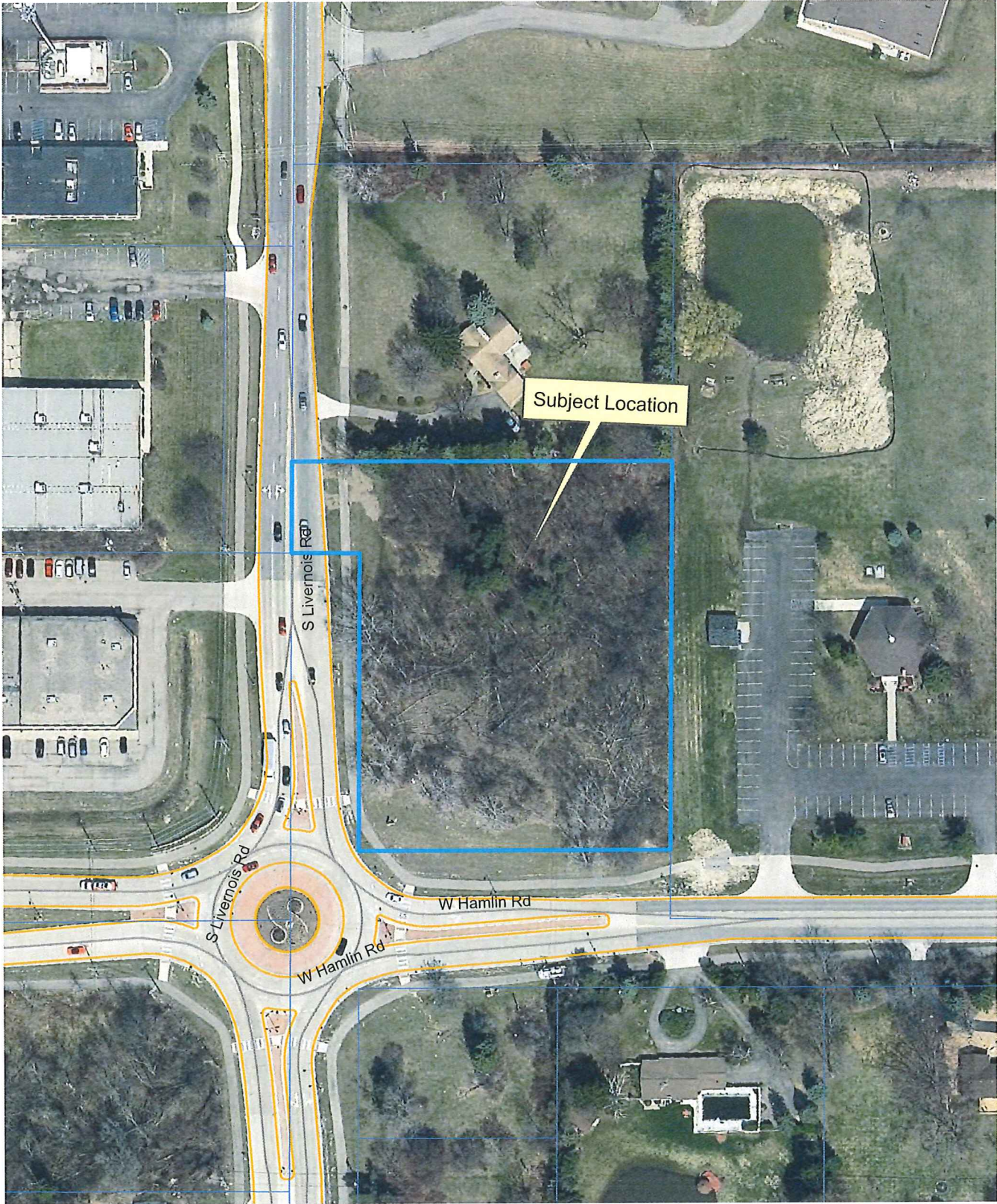


Location Map Oakridge Dental Office



| Legend | |
|--------|---------------------------|
| | Transfer with Street Name |
| | Surface Road/Exp |
| | PHOTOCOPY/SCALE |
| | ASB |
| | Red - Bldg |
| | Green - Bldg |
| | Blue - Bldg |

Aerial photographs as of April 2015
 TaxParcel lines were obtained on 2/17/17 from Oakland County.
 Although the information provided by this map is believed to be reliable, its accuracy is not warranted in any way. The City of Rochester Hills assumes no liability for any claims arising from the use of this map.

5/1/17

1 inch = 125 feet