

EXHIBIT 'A'

TRANSFER PARCEL WEST SIDE OF DONALDSON TO THE CITY FROM 15-34-301-016

Part of Lots 10 and 11 "Supervisor's Plat No.6" Part of the S.W. 1/4 of Section 34, T.3N., R.11E., Avon Township (now known as the City of Rochester Hills), Oakland County, Michigan as recorded in Liber 5 Page 56 of the Oakland County Records, is more particularly described as: Commencing at the N.W. corner of Lot 11 "Supervisor's Plat No. 6" thence N.85°39'09"E., 181.53 feet along the north line of Lot 11 and partially along the north line of Lot 10 to the Point of Beginning; thence S.00°03'19"W., 16.36 feet; thence along a curve concave to the west of radius 230.00 feet, a central angle of 19°07'27", whose chord bears S.09°37'02"W., 76.41 feet, an arc length of 76.77 feet; thence S.19°10'45"W., 71.00 feet; thence along a curve concave to the east of radius 290.00 feet, a central angle of 22°56'57", whose chord bears S.07°42'17"W., 115.38 feet, an arc length of 116.16 feet; thence S.03°46'12"E., 118.81 feet; thence along a curve concave to the east of radius 290.00 feet, a central angle of 19°18'38", whose chord bears S.13°25'31"E., 97.28 feet, an arc length of 97.74 feet; thence S.23°04'50"E., 50.28 feet; thence along a curve concave to the west of radius 230.00 feet, a central angle of 18°42'20", whose chord bears S.13°43'40"E., 74.76 feet, an arc length of 75.09 feet; thence S.04°22'30"E., 7.93 feet; to a point on the northerly right-of-way of Shortridge Avenue, thence N.04°22'30"W., 7.32 feet; thence along a curve concave to the west of radius 200.00 feet, a central angle of 18°42'20", whose chord bears N.13°43'40"W., 65.01 feet, an arc length of 65.30 feet; thence N.23°04'50"W., 60.50 feet; thence along a curve concave to the east of radius 260.00 feet, a central angle of 19°18'38", whose chord bears N.13°25'31"W., 87.21 feet, an arc length of 87.63 feet; thence N.03°46'12"W., 134.85 feet; thence along a curve concave to the east of radius 260.00 feet, a central angle of 19°45'11", whose chord bears N.06°06'23"E., 89.19 feet, an arc length of 89.64 feet; thence N.15°58'59"E., 126.09 feet; thence along a curve concave to the west of radius 200.00 feet, a central angle of 15°55'40", whose chord bears N.08°01'09"E., 55.42 feet, an arc length of 55.60 feet; thence N.00°03'19"E., 2.77 feet to the Point of Beginning and containing 0.017 acres.

*Mike Tavant
Approved 1/19/17*



**URBAN
LAND
CONSULTANTS ©**

CIVIL ENGINEERS PLANNERS LAND SURVEYORS
GPS CONSULTANTS
8800 23 MILE ROAD SHELBY TWP., MI 48316-4316

PHONE 586 731-8030
FAX 586 731-2605

LEGEND

FIB = Found Bar
FIP = Found Pipe
SIB = Set Bar/Cap
SMN = Set Mag Nail
R = Record Distance
M = Measured Distance
RAD = Radial

WARREN C. AVEY
PROFESSIONAL SURVEYOR
No. 30076

Date 12-5-16
Drawn T.M.P.
Check W.C.A.
Sheet 1 of 3

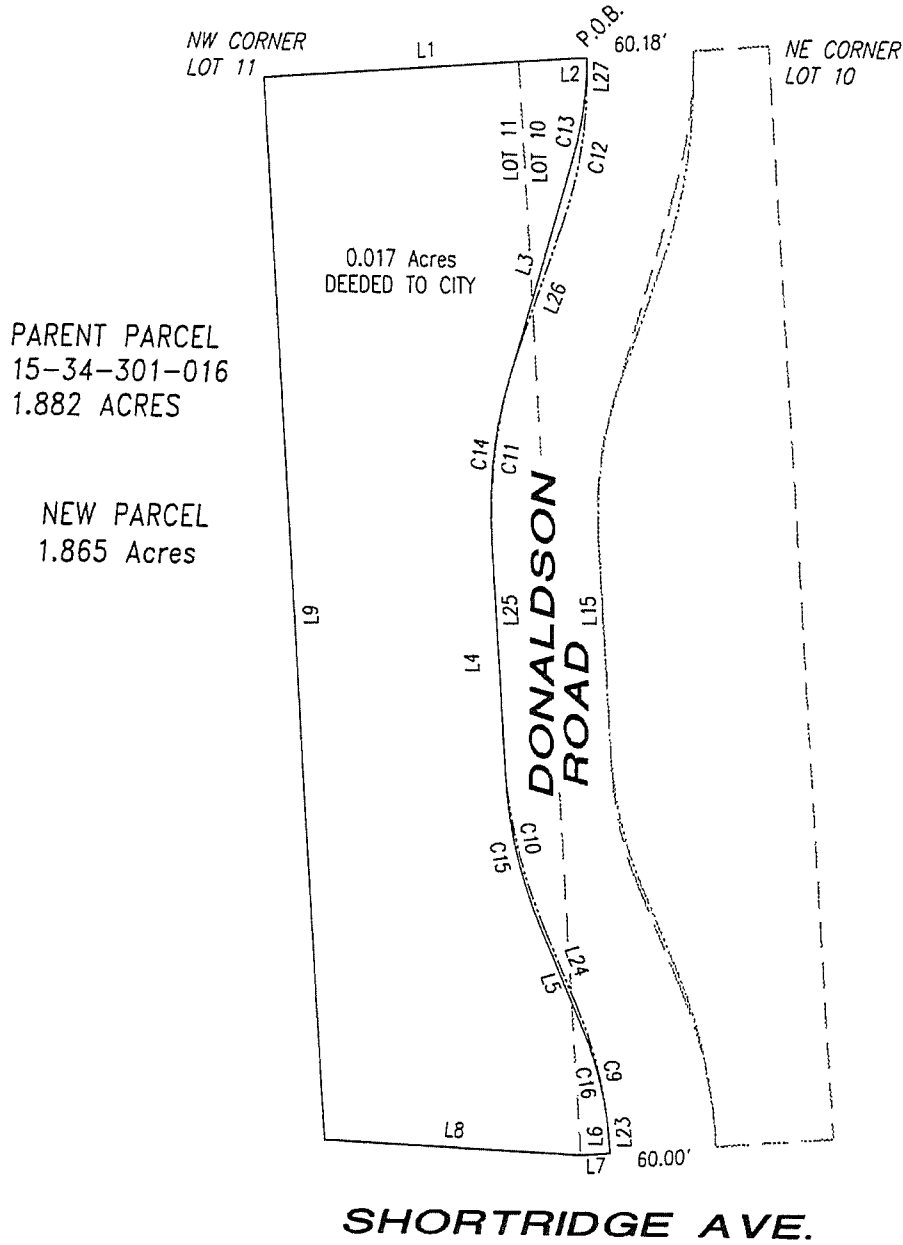
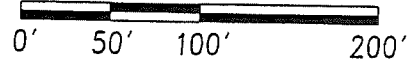
Job No.
140403

NOTES:

- BEARINGS IN RELATION TO DESCRIPTION OF RECORD.
- THE LEGAL DESCRIPTIONS OF PROPOSED SPLITS ARE SUBJECT TO MUNICIPAL APPROVAL.



Scale : 1" = 100'



PARENT PARCEL
15-34-301-016
1.882 ACRES

NEW PARCEL
1.865 Acres

SHORTRIDGE AVE.

- = EXISTING DESCRIPTION LINE
- = PROPOSED DESCRIPTION LINE



PHONE 586 731-8030
FAX 586 731-2605

**URBAN
LAND
CONSULTANTS** ©

CIVIL ENGINEERS PLANNERS LAND SURVEYORS
GPS CONSULTANTS

8800 23 MILE ROAD SHELBY TWP., MI 48316-4316

LEGEND

FIB = Found Bar
FIP = Found Pipe
SIB = Set Bar/Cap
SMN = Set Mag Nail
R = Record Distance
M = Measured Distance
RAD = Radial

WARREN C. AVEY
PROFESSIONAL SURVEYOR
No. 30076

Date 12-5-16
Drawn T.M.P.
Check W.C.A.
Sheet 2 of 3

Job No.
140403

CURVE	ARC LENGTH	RADIUS	DELTA ANGLE	CHORD BEARING	CHORD LENGTH
C9	75.09'	230.00'	18°42'20"	S13°43'40"E	74.76'
C10	97.74'	290.00'	19°18'38"	S13°25'31"E	97.28'
C11	116.16'	290.00'	22°56'57"	S07°42'17"W	115.38'
C12	76.77'	230.00'	19°07'27"	S09°37'02"W	76.41'
C13	55.60'	200.00'	15°55'40"	N08°01'09"E	55.42'
C14	89.64'	260.00'	19°45'11"	N06°06'23"E	89.19'
C15	87.63'	260.00'	19°18'38"	N13°25'31"W	87.21'
C16	65.30'	200.00'	18°42'20"	N13°43'40"W	65.01'

LINE	BEARING	DISTANCE
L1	N85°39'09"E	181.53'
L2	N00°03'19"E	2.77'
L3	N15°58'59"E	126.09'
L4	N03°46'12"W	134.85'
L5	N23°04'50"W	60.50'
L6	N04°22'30"W	7.32'
L7	S85°37'30"W	16.35'
L8	N87°21'57"W	144.23'
L9	N03°36'49"W	595.09'
L23	S04°22'30"E	7.93'
L24	S23°04'50"E	50.28'
L25	S03°46'12"E	118.81'
L26	S19°10'45"W	71.00'
L27	S00°03'19"W	16.36'



**URBAN
LAND
CONSULTANTS** ©

CIVIL ENGINEERS PLANNERS LAND SURVEYORS
GPS CONSULTANTS
8800 23 MILE ROAD SHELBY TWP., MI 48316-4516

PHONE 586 731-8030
FAX 586 731-2605

LEGEND

FIB = Found Bar
FIP = Found Pipe
SIB = Set Bar/Cap
SMN = Set Mag Nail
R = Record Distance
M = Measured Distance
RAD = Radial

WARREN C. AVEY
PROFESSIONAL SURVEYOR
No. 30076

Date 12-5-16
Drawn T.M.P.
Check W.C.A.
Sheet 3 of 3

Job No.
140403