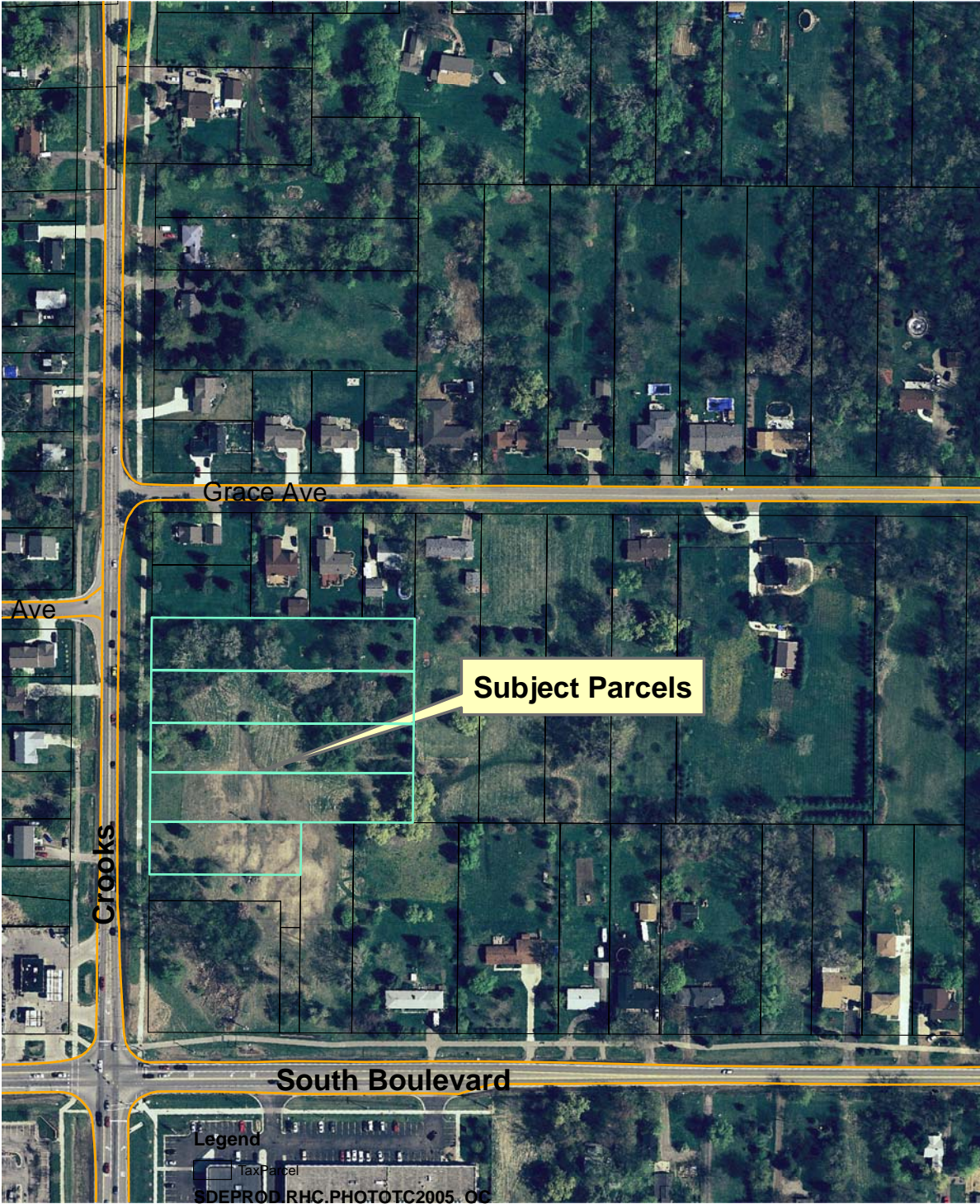


Crooks and South Boulevard Rezoning to SP City File No. 02-028 B



- RGB**
- Red: Band_1
 - Green: Band_2
 - Blue: Band_3

Aerial photographs as of April 2005
Parcel lines were obtained on 10-03-06 from Oakland County
Although the information provided by this map is believed to
be reliable, its accuracy is not warranted in any way. The City
of Rochester Hills assumes no liability for any claims arising
from the use of this map.

10/05/06

1 inch equals 241 feet