



innovative *by* nature

Bryan K. Barnett
Mayor

September 3, 2020

City Council

Stephanie Morita
District 1

David J. Blair
District 2

Susan M. Bowyer, Ph.D.
District 3

Ryan J. Deel
District 4

Dale Hetrick
At-Large

Theresa Mungiola
At-Large

David Walker
At-Large

Ms. Susan White
Johnny Blacks Public House
1711 E. Auburn Rd
Rochester Hills, Mi. 48307

Re: Prohibited signs/Illumination Applications PS-2020-0081 thru PS-2020-0084

Dear Ms. Susan White:

We are in receipt of your applications for sign permits for the above referenced location. However, your applications do not meet the requirements as set forth in our Ordinance for the following reason(s):

ITEM #1:

The submitted sign permit applications are requesting four (4) new signs with exposed lighting. Exposed illumination lighting is not allowed.

City of Rochester Hills Ordinance 134, Section 134-4 (2), Prohibited signs (5) Illumination b, states:

The source of illumination may be internal or external. The source of light shall not be exposed.

Therefore your sign permit applications are being rejected. Please amend your drawings to reflect compliance with the ordinance requirements.

Ms. Susan White
September 3, 2020
Page 2

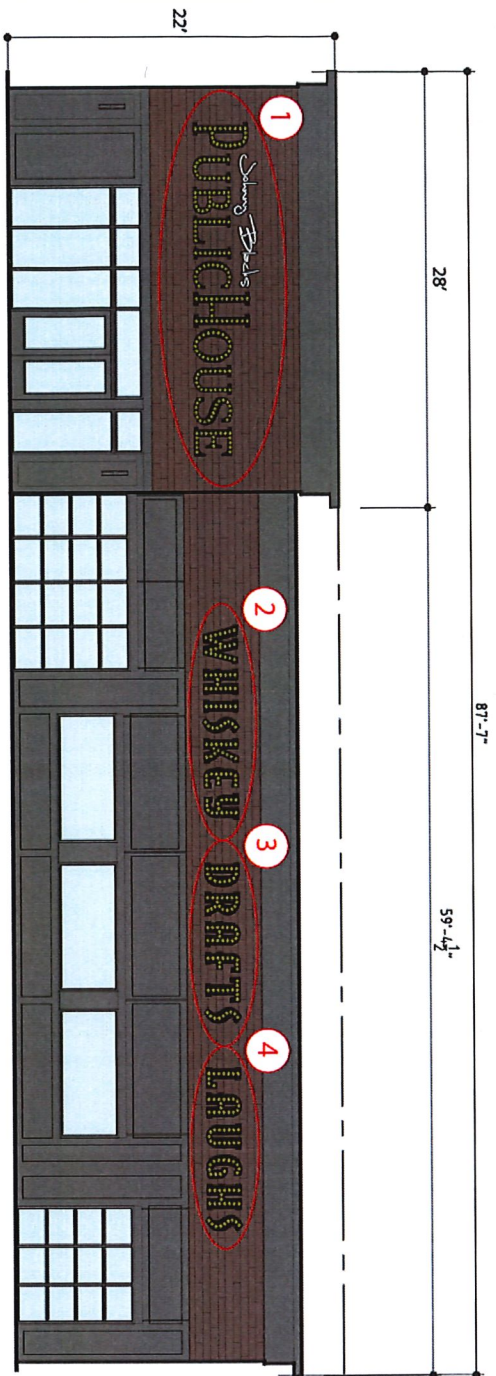
If you have any questions regarding the above, please feel free to contact the Building Department at (248) 656-4615.

Sincerely,
BUILDING DEPARTMENT

A handwritten signature in black ink, appearing to read 'Mark Mclocklin', with a long horizontal flourish extending to the right.

Mark Mclocklin
Ordinance Inspector

MGM/mgm



SITE ADDRESS

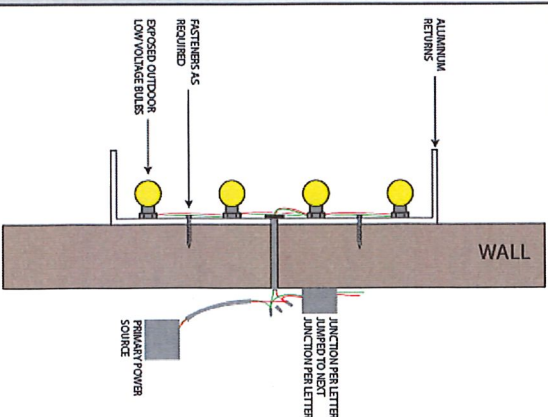
TYPE OF SIGN

Exposed, exterior bulbs, low volt
Channel Letters
Flush Mounted to wall

SIGN DETAILS

- .040 ALUMINUM BACKS
- .040 ALUMINUM RETURNS
- Open Face
- Exposed outdoor bulbs
- POWER SUPPLY
- UL LISTED

MOUNTING DETAIL



1 99 SF 53" 268"

Johnny Ebbels
PUBLICHOUSE

2 18 SF 22" 116"

WHISKEY

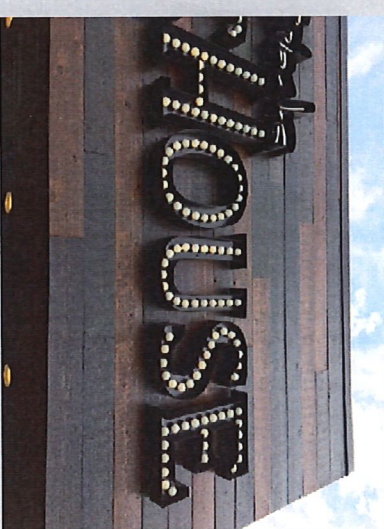
3 15 SF 22" 96"

DRAFTS

4 15 SF 22" 98"

LAUGHS

example of exposed bulb
channel letters



147 Total Square feet of signage of allowable 200



43984 Groesbeck Highway
Clinton Twp, MI 48036
Phone: 586-493-0502 Fax: 586-493-0503