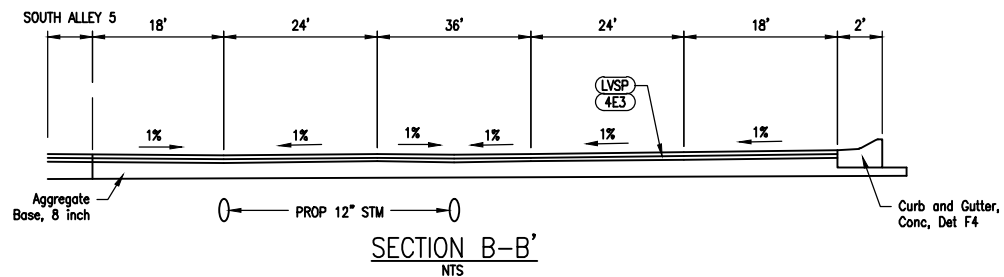
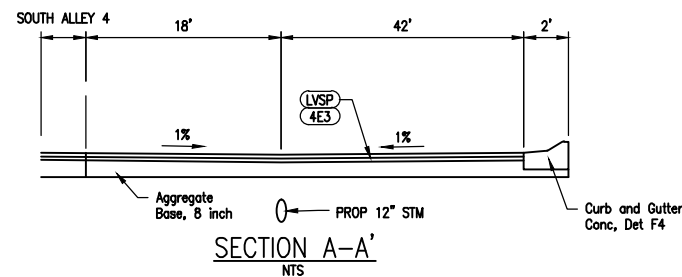
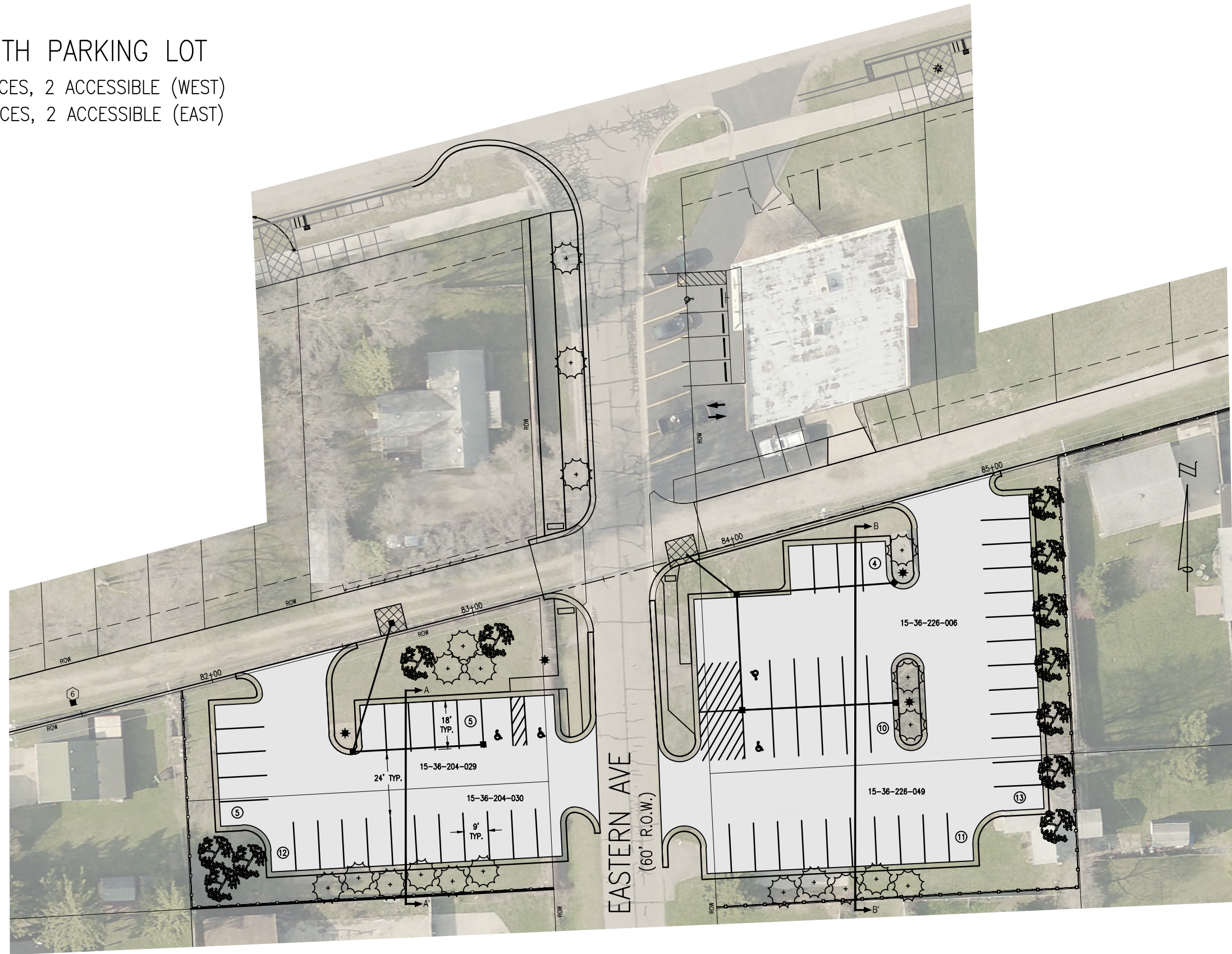


SOUTH PARKING LOT

22 SPACES, 2 ACCESSIBLE (WEST)
 38 SPACES, 2 ACCESSIBLE (EAST)



LEGEND

- PAVT, REM
- PROP ASPHALT



OHM
 ARCHITECTS ENGINEERS PLANNERS
 34000 Plymouth Road
 Livonia, MI 48150
 P (734) 522-6711 | F (734) 522-6427
 OHM-ADVISORS.COM

REVISIONS	DATE	DESCRIPTION

CITY OF ROCHESTER HILLS
 SOUTH ALLEY PARKING LOTS
 CONCEPT PLAN

DATE: 07/15/2021
 PROJ. NO.: 0106-12-002
 ENG.: AP
 PROD. NO.: M.E.
 COUNTY: Oakland
 CITY/VILLAGE/TOWNSHIP: Rochester Hills
 SCALE: H: 1"=10' V: 1"=10'
 HORIZ. DATUM: Value
 VERT. DATUM: Value



DRAWING PATH: P:\0186_020\0180\07002_Auburn_Road_Reconstruction\Drawings\Civil\Plans_Consts\South Parking Ordinal.dwg Jul 29, 2021 - 5:14pm

COPYRIGHT 2017 OHM ALL DRAWINGS AND WRITTEN MATERIALS APPEARING HEREIN CONSTITUTE THE ORIGINAL AND UNPUBLISHED WORK OF OHM AND THE SAME MAY NOT BE DUPLICATED, DISTRIBUTED, OR DISCLOSED WITHOUT PRIOR WRITTEN CONSENT OF OHM