



# City of ROCHESTER HILLS

1000 Rochester Hills Drive, Rochester Hills, Michigan 48309-3033

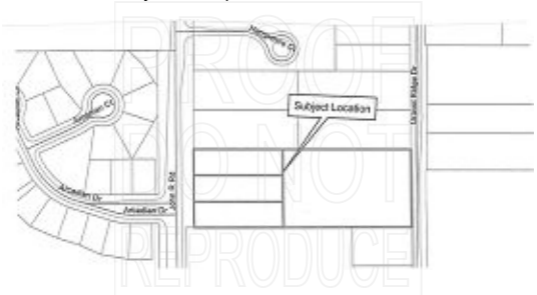
## NOTICE OF PUBLIC HEARING

### **ROCHESTER HILLS PLANNING COMMISSION**

**REQUEST:** In accordance with Section 126-565 of the Wetland and Watercourse Protection Ordinance, notice is hereby given that a request for a Wetland Use Permit Recommendation for impacts up to 12,000 square feet associated with the construction activities for a 16-unit residential development on 4.4 acres has been submitted to the City for review and recommendation by the Planning Commission. The area is zoned R-4 One Family Residential and affects Parcel Nos. 15-24-301-077 to -080 (City File No. 17-013).

**LOCATION:** East side of John R between Hamlin and School Rds.

**APPLICANT:** M2J1, LLC  
14955 Technology Dr.  
Shelby Township, MI 48315



**DATE OF PUBLIC HEARING:** Tuesday, March 20, 2018 at 7:00 p.m.

**LOCATION OF PUBLIC HEARING:** City of Rochester Hills  
Municipal Offices  
1000 Rochester Hills Drive  
Rochester Hills, MI 48309

Information concerning this request may be obtained from the Planning and Development Department, during regular business hours from 8:00 a.m. to 5:00 p.m., Monday through Friday, or by calling (248) 656-4660. Written comments concerning this request will be received by the City of Rochester Hills Planning and Economic Development Department, 1000 Rochester Hills Drive, Rochester Hills, Michigan 48309, prior to the Public Hearing or by the Planning Commission at the meeting. The plans can also be found at rochesterhills.org, business, maps, planning & economic dev., development projects. This recommendation will be forwarded to City Council after the Public Hearing.

**NOTE:** Anyone planning to attend the meeting who has need of special assistance under the Americans with Disabilities Act (ADA) is invited to contact the Facilities Division (656-2560) 48 hours prior to the meeting. Our staff will be pleased to make the necessary arrangements.