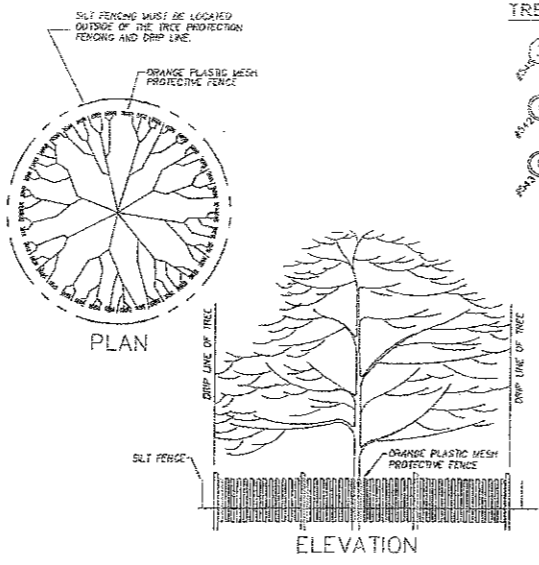


NOTE: PRIOR TO THE RELEASE OF THE PERFORMANCE BOND, THE CITY OF ROCHESTER HILLS FORESTRY DIVISION NEEDS TO INSPECT ALL TREES, EXISTING OR PLANTED, TO IDENTIFY ANY THAT POSE A HAZARD TO THE SAFE USE OF THE PUBLIC RIGHT-OF-WAY. FORESTRY DIVISION MAY REQUIRE THE DEVELOPER TO REMOVE AND POSSIBLY REPLACE, ANY SUCH TREES.

**TREE PROTECTION NOTES:**

1. IF A TREE DESIGNATED FOR PRESERVATION IS DAMAGED DURING GRADING OR CONSTRUCTION OPERATIONS, A FINE OF \$100.00 PER CALIPER INCH OF TREE DAMAGED WILL BE ISSUED. PAYMENT OF THIS FINE IS DUE PRIOR TO ANY CERTIFICATE OF OCCUPANCY BEING ISSUED.
2. APPROVED TREE PROTECTION SHALL BE CREATED PRIOR TO THE START OF CONSTRUCTION ACTIVITIES, AND SHALL REMAIN IN PLACE UNTIL CONSTRUCTION IS COMPLETE. THE FORESTRY DIVISION SHALL BE NOTIFIED AFTER TREE PROTECTION IS IN PLACE, PRIOR TO CONSTRUCTION ACTIVITIES, INCLUDING DELIVERY OF MATERIALS.
3. SLT FENCING IS TO BE LOCATED ON THE CONSTRUCTION SIDE OF THE TREE PROTECTIVE FENCING. SLT FENCING IS NOT TO BE LOCATED WITHIN THE DRIP LINE OF ANY TREE DESIGNATED FOR PRESERVATION.
4. NO PERSON MAY CONDUCT ANY ACTIVITY WITHIN THE DRIP LINE OF ANY TREE DESIGNATED TO REMAIN, INCLUDING, BUT NOT LIMITED TO, PLOWING SOLVENTS, BUILDING MATERIALS, CONSTRUCTION EQUIPMENT, OR SOIL DEPOSITS WITHIN THE DRIP LINE.
5. GRADE CHANGES MAY NOT OCCUR WITHIN THE DRIP LINES OF PROTECTED TREES.
6. DURING CONSTRUCTION, NO PERSON SHALL ATTACH ANY DEVICE OR WIRE TO ANY REMAINING TREE.
7. ALL UTILITY SERVICE REQUESTS MUST INCLUDE NOTIFICATION TO THE INSTALLER THAT PROTECTED TREES MUST BE AVOIDED. ALL TRENCHING SHALL OCCUR OUTSIDE OF THE PROTECTIVE FENCING.
8. SWALES SHALL BE ROUTED TO AVOID THE AREA WITHIN THE DRIP LINES OF PROTECTED TREES.
9. IF TREE PROTECTION CANNOT BE MAINTAINED FOR A TREE THROUGHOUT THE CONSTRUCTION PERIOD, REPLACEMENT OF THAT TREE MUST BE REQUIRED PRIOR TO THE ISSUANCE OF THE CERTIFICATE OF OCCUPANCY.
10. ANY OFFSITE TREES WITH THE POTENTIAL OF BEING DAMAGED BY THE DEVELOPMENT OF THIS PARCEL MUST ALSO BE PROTECTED WITH TREE PROTECTIVE FENCING.
11. ALL TREES TO BE TRANSPORTED MUST BE PROTECTED WITH TREE PROTECTIVE FENCING DURING LOAD CLEARING AND GRADING, PRIOR TO TRANSPORTING, AND AGAIN IMMEDIATELY AFTER TRANSPORTING.

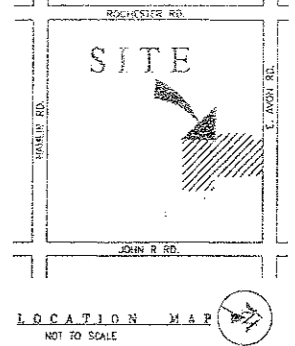


**TREE SYMBOL LEGEND**

- 112 TREES TO REMAIN
- 188 REGULATED TREES TO BE REMOVED
- 44 DEAD TREES (TO BE REMOVED)
- 40 EXEMPT TREES (TO BE REMOVED - INCLUDES TREES IN THE AVON RD. R.O.W.)
- 12 REGULATED TREES TO BE TRANSPANTED (#243, #250, #322, #357, #515, #525, #529, #1667, #1077, #1090, #1093, #1092)

SEE STORM SEWER EASEMENT CONTINUATION (THIS SHEET, AT RIGHT)

NOTE: THERE IS NO TREE #598

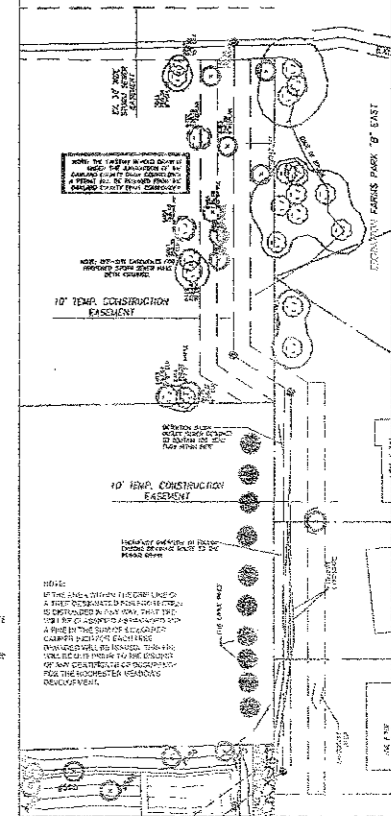


NOTES:  
ALL TREES BEING RETAINED WILL BE IDENTIFIED BY APPROVED METHOD.  
WHEN PROTECTIVE BARRIERS ARE NECESSARY, THEY WILL BE ERRECTED BEFORE WORK STARTS.  
THE TREES WILL CONFORM TO THE GUIDELINES ESTABLISHED IN THE MOST RECENT EDITION OF THE AMERICAN STANDARD FOR NURSERY STOCK, AND MUST BE APPROVED BY THE CITY PRIOR TO PLANTING.  
REPLACEMENT AND RELOCATED TREES MUST BE STAKED, FERTILIZED AND MULCHED, AND SHALL BE GUARANTEED BY THE DEVELOPER TO EXHIBIT A NORMAL GROWTH CYCLE FOR TWO (2) YEARS FROM THE DATE OF APPROVAL OF THE CITY OF ROCHESTER HILLS LANDSCAPE ARCHITECT.

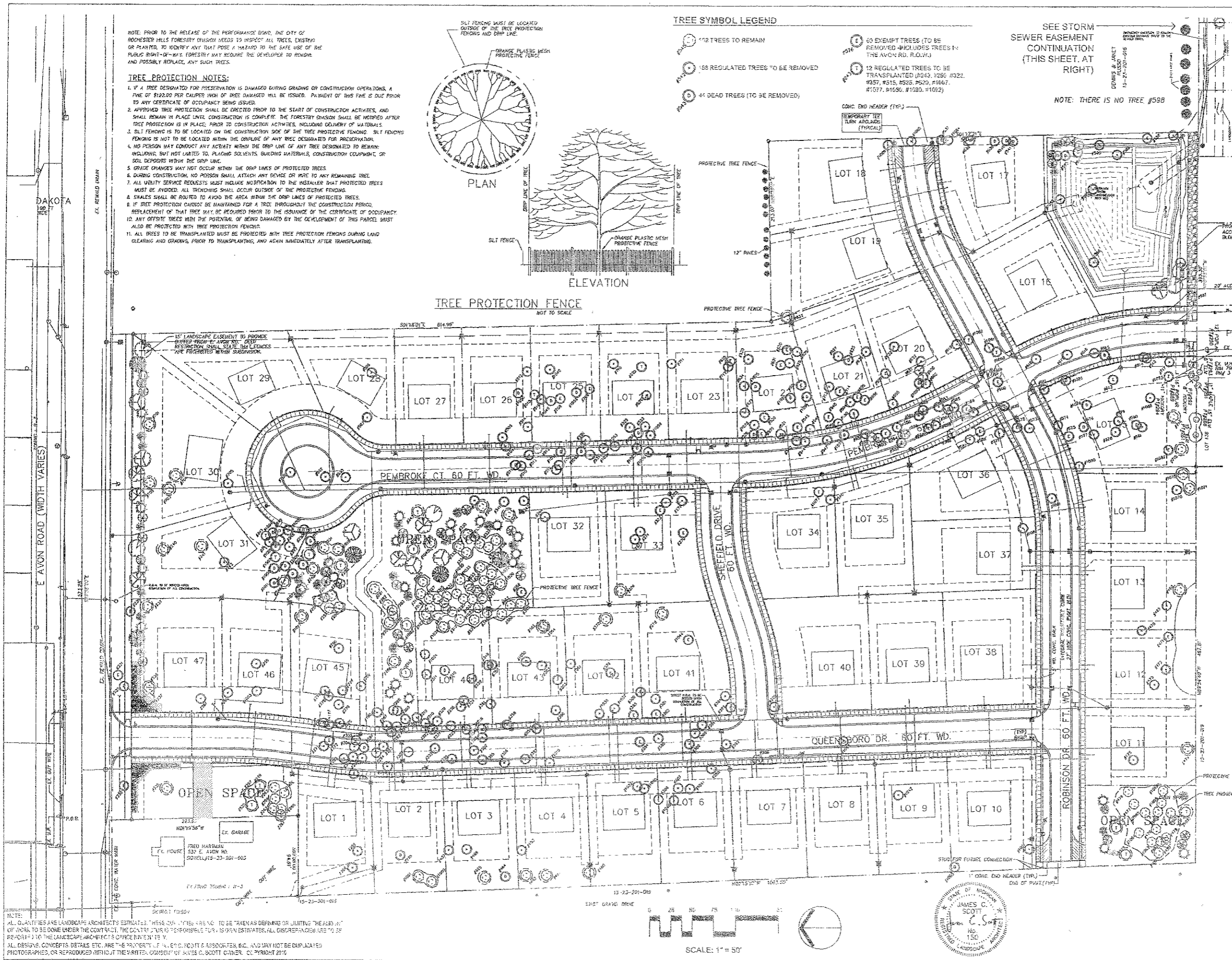
**TREE DATA:**  
TOTAL NUMBER OF TREES SURVEYED: 406  
MINUS: 4 AVON RD. R.O.W. TREES: -4  
MINUS 44 DEAD TREES: -44  
MINUS EXEMPT TREES: -56  
TOTAL NUMBER OF REGULATED TREES: 302  
MINUS REGULATED TREES TO BE REMOVED: -188  
MINUS REGULATED TREES SAVED: 114  
NUMBER OF TREES TRANSPORTED: 412  
TOTAL NUMBER OF TREES PRESERVED ON SITE: 114  
114/302 = .377 = 38%

OFFSITE TREES REMOVED: 6  
OFFSITE TREE CREDITS PROVIDED: 5+

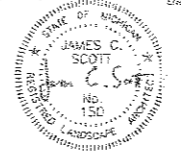
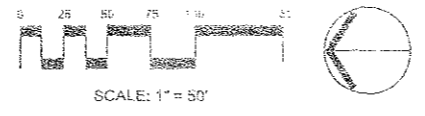
**STORM SEWER EASEMENT CONTINUATION**  
SCALE 1" = 50' 0"



NOTES:  
SEE SHEET L-2 FOR REPLACEMENT TREE INFORMATION.  
SEE SHEET L-3 FOR REPLACEMENT DRAINAGE INFORMATION.  
SEE SHEETS L-4 AND L-5 FOR EXISTING TREE INFORMATION.



NOTES:  
ALL QUANTITIES ARE LANDSCAPE ARCHITECT'S ESTIMATE. THESE QUANTITIES ARE TO BE USED AS A GUIDE ONLY AND NOT TO BE USED AS A CONTRACT DOCUMENT. THE CONTRACTOR IS RESPONSIBLE FOR VERIFYING ALL QUANTITIES AND DISCREPANCIES ARE TO BE REPORTED TO THE LANDSCAPE ARCHITECT'S OFFICE IMMEDIATELY.  
ALL DESIGNS, CONCEPTS, DETAILS, ETC. ARE THE PROPERTY OF JAMES C. SCOTT & ASSOCIATES, INC. AND MAY NOT BE DUPLICATED, PHOTOGRAPHED, OR REPRODUCED WITHOUT THE WRITTEN CONSENT OF JAMES C. SCOTT & ASSOCIATES, INC. COPYRIGHT 2010.



16.10.05	3,29.64
12.2.05	3,30.65
3.5.07	5,28.65
6.17.10	6,24.05
REV	0/21/03
BY	BMV
DATE	1" = 50'

**TREE PRESERVATION**

**CALCULATIONS**

NUMBER OF TREES SURVEYED:	406
MINUS R.O.W. TREES:	-4
MINUS DEAD TREES:	-44
MINUS EXEMPT TREES:	-56
NUMBER OF REGULATED TREES:	302
NUMBER OF TREES REMOVED:	-188
NUMBER OF REGULATED TREES TO REMAIN:	102
NUMBER OF TREES TO BE TRANSPLANTED:	112
NUMBER OF REGULATED TREES TO BE PRESERVED:	114 (37.7%)

OFF SITE TREES REMOVED: 8

**REPLACEMENT TREE DATA**

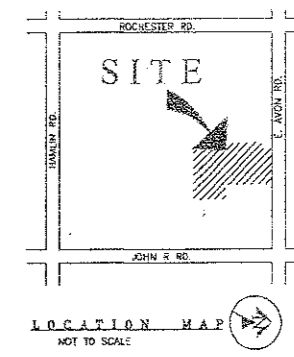
TOTAL # REPLACEMENT TREES:	94
DECIDUOUS TREES (3" CAL.):	21 (42 CREDITS)
CONIFEROUS TREES (10' HT.):	73 (146 CREDITS)
TOTAL CREDITS REQUIRED:	188
TOTAL CREDITS PROVIDED:	188

OFFSITE CREDITS REQUIRED: 8  
OFFSITE CREDITS PROVIDED: 8\*\*

\*\* OFF SITE REPLACEMENT TREES TO BE PLACED ON THE LOT(S) OF THE TREE(S) THAT THEY ARE REPLACING, AT THE DISCRETION OF THE CITY OF ROCHESTER HILLS LANDSCAPE ARCHITECT.

**TREE PROTECTION NOTES:**

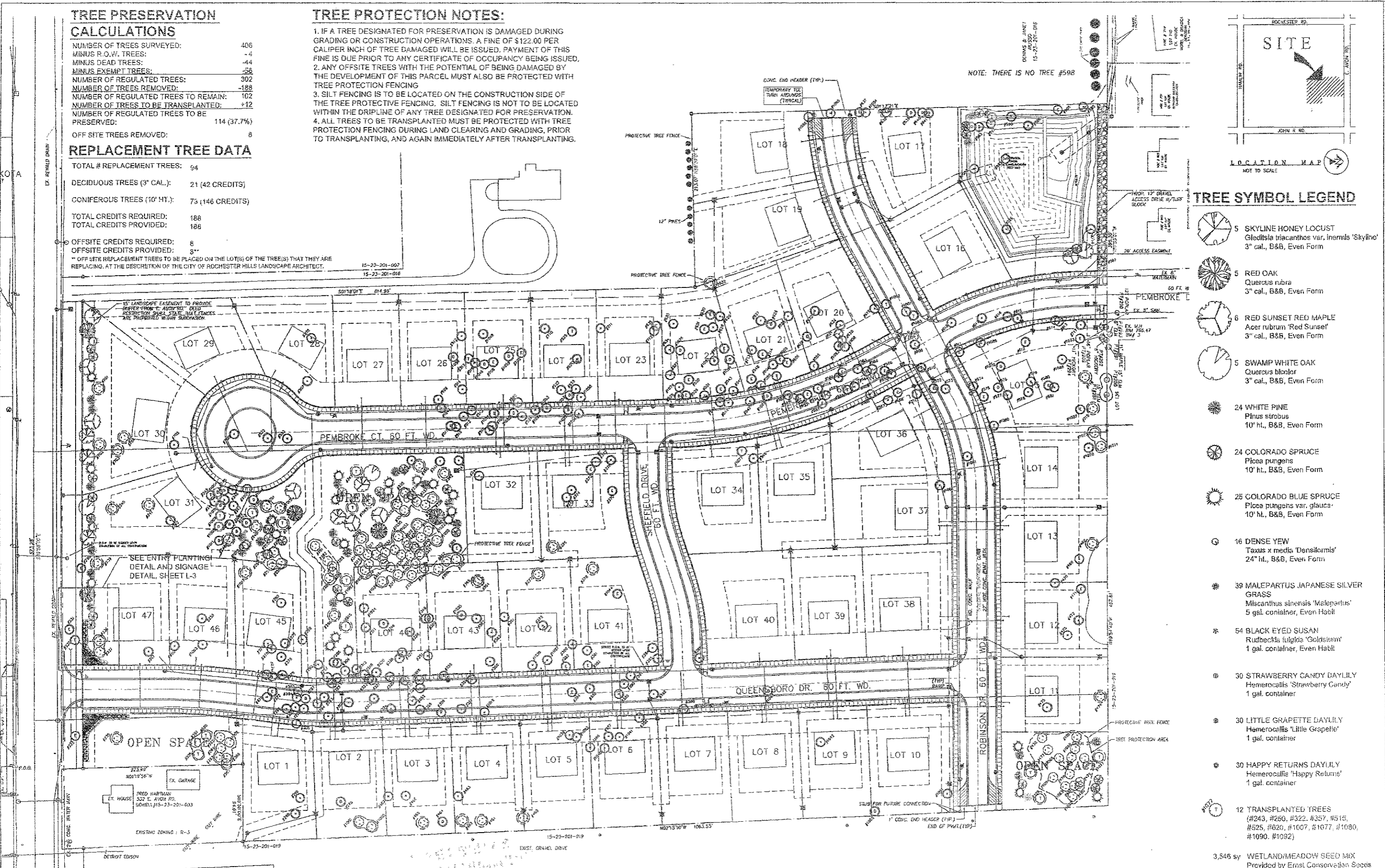
1. IF A TREE DESIGNATED FOR PRESERVATION IS DAMAGED DURING GRADING OR CONSTRUCTION OPERATIONS, A FINE OF \$122.00 PER CALIPER INCH OF TREE DAMAGED WILL BE ISSUED. PAYMENT OF THIS FINE IS DUE PRIOR TO ANY CERTIFICATE OF OCCUPANCY BEING ISSUED.
2. ANY OFFSITE TREES WITH THE POTENTIAL OF BEING DAMAGED BY THE DEVELOPMENT OF THIS PARCEL MUST ALSO BE PROTECTED WITH TREE PROTECTION FENCING
3. SILT FENCING IS TO BE LOCATED ON THE CONSTRUCTION SIDE OF THE TREE PROTECTIVE FENCING. SILT FENCING IS NOT TO BE LOCATED WITHIN THE DRIFLINE OF ANY TREE DESIGNATED FOR PRESERVATION.
4. ALL TREES TO BE TRANSPLANTED MUST BE PROTECTED WITH TREE PROTECTION FENCING DURING LAND CLEARING AND GRADING, PRIOR TO TRANSPLANTING, AND AGAIN IMMEDIATELY AFTER TRANSPLANTING.



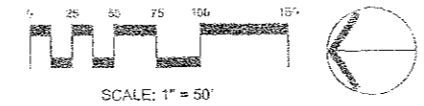
**TREE SYMBOL LEGEND**

- 5 SKYLINE HONEY LOCUST  
*Gleditsia triacanthos* var. *inermis* 'Skyline'  
3" cal., B&B, Even Form
- 5 RED OAK  
*Quercus rubra*  
3" cal., B&B, Even Form
- 6 RED SUNSET RED MAPLE  
*Acer rubrum* 'Red Sunset'  
3" cal., B&B, Even Form
- 5 SWAMP WHITE OAK  
*Quercus bicolor*  
3" cal., B&B, Even Form
- 24 WHITE PINE  
*Pinus strobus*  
10' ht., B&B, Even Form
- 24 COLORADO SPRUCE  
*Picea pungens*  
10' ht., B&B, Even Form
- 25 COLORADO BLUE SPRUCE  
*Picea pungens* var. *glauca*  
10' ht., B&B, Even Form
- 16 DENSE YEW  
*Taxus x media* 'Densiformis'  
24" ht., B&B, Even Form
- 39 MALEPARTUS JAPANESE SILVER GRASS  
*Miscanthus sinensis* 'Malepartus'  
5 gal. container, Even Habit
- 54 BLACK EYED SUSAN  
*Rudbeckia fulgida* 'Goldstium'  
1 gal. container, Even Habit
- 30 STRAWBERRY CANDY DAYLILY  
*Hemerocallis* 'Strawberry Candy'  
1 gal. container
- 30 LITTLE GRAPETTE DAYLILY  
*Hemerocallis* 'Little Grapette'  
1 gal. container
- 30 HAPPY RETURNS DAYLILY  
*Hemerocallis* 'Happy Returns'  
1 gal. container
- 12 TRANSPLANTED TREES  
(#243, #250, #322, #357, #515, #525, #620, #1007, #1077, #1080, #1090, #1092)

3,546 sy	WETLAND/MEADOW SEED MIX Provided by Ernst Conservation Seeds Meadville, PA (800-873-3321)
1,600 sy	SOD LAWN
7,336 sy	SEED LAWN



NOTE: ALL QUANTITIES ARE LANDSCAPE ARCHITECT'S ESTIMATES. THESE QUANTITIES ARE NOT TO BE TAKEN AS OPINION OR LIMITING THE SCOPE OF WORK TO BE DONE UNDER THIS CONTRACT. THE CONTRACTOR IS RESPONSIBLE FOR HIS OWN ESTIMATES. ALL DISCREPANCIES ARE TO BE REPORTED TO THE LANDSCAPE ARCHITECT'S OFFICE IMMEDIATELY.  
ALL DESIGNS, CONDITIONS, DETAILS, ETC., ARE THE PROPERTY OF JAMES C. SCOTT & ASSOCIATES, INC., AND MAY NOT BE DUPLICATED, PHOTOGRAPHED OR REPRODUCED WITHOUT THE WRITTEN CONSENT OF JAMES C. SCOTT, OWNER, COPYRIGHT 2010



SCALE: 1" = 50'

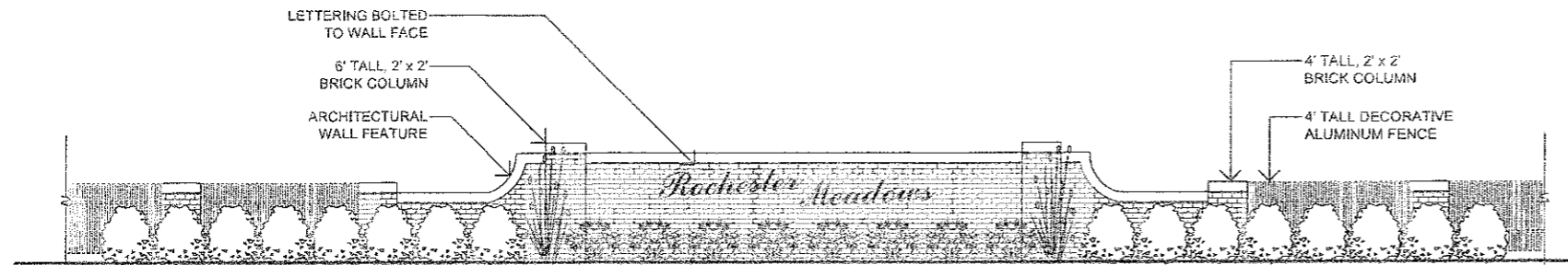
SCHEMATIC LANDSCAPE PLAN

ROCHESTER HILLS, MI

ROCHESTER MEADOWS



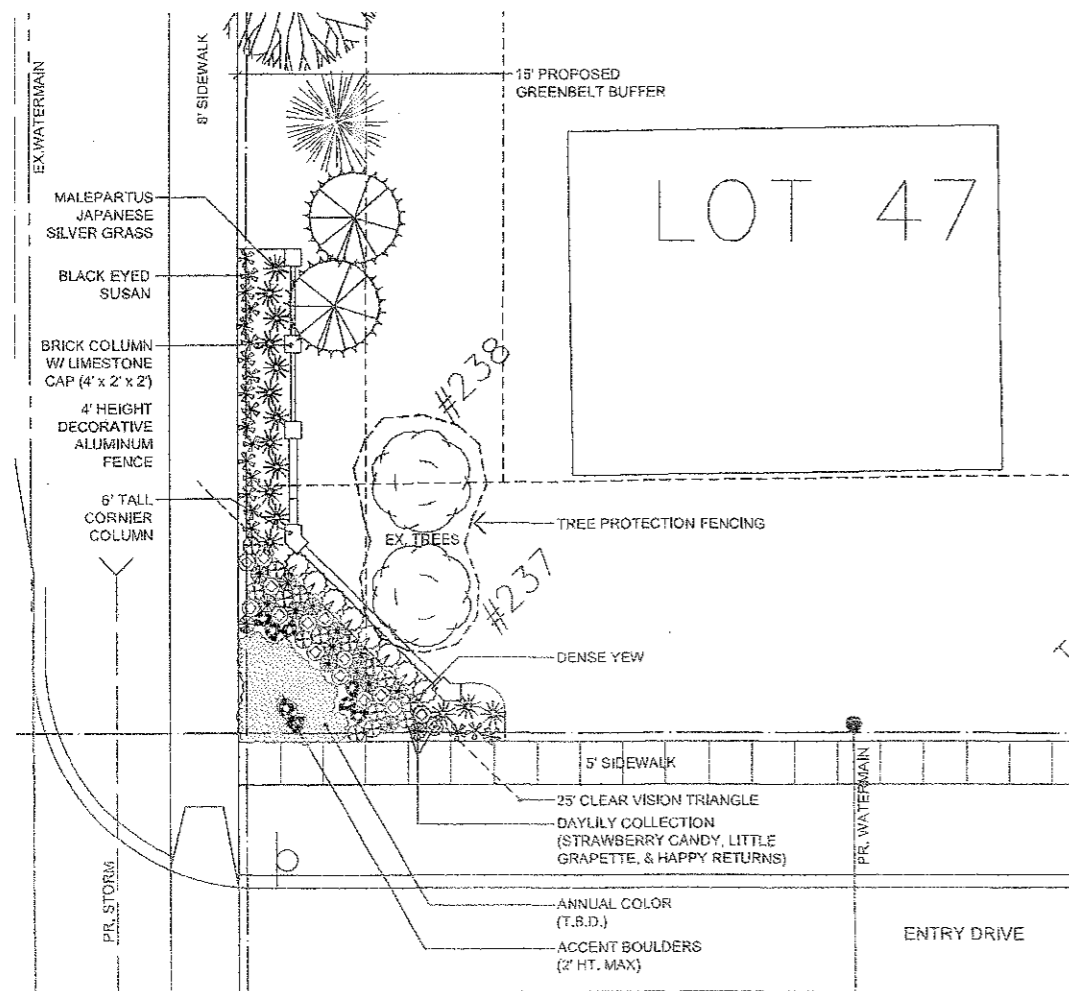
10.16.05	9.20.04
12.2.05	3.3.05
3.5.07	5.28.05
6.17.10	8.24.05
DATE	8/21/05
PROJECT	BMW
SCALE	1" = 50' 0"



**SIGNAGE DETAIL**

NOT TO SCALE

NOTE: FULL WALL SHOWN (NORTH SIDE OF QUEENSBORO DRIVE), OR ILLUSTRATION PURPOSES ONLY



**ENTRY PLANTING DETAIL**

SCALE: 1" = 10' 0"

NOTE: SOUTH SIDE OF QUEENSBORO DRIVE SHOWN. MIRROR ENTRY DETAIL FOR NORTH SIDE OF QUEENSBORO DRIVE - MALEPARTUS JAPANESE SILVER GRASS AND BLACK EYED SUSAN TO EXTEND THE LENGTH OF WALL RUNNING WEST FROM QUEENSBORO ENTRANCE.

**LANDSCAPE NOTES**

1. PRIOR TO THE RELEASE OF ANY PERFORMANCE BOND, THE CITY OF ROCHESTER HILLS LANDSCAPE ARCHITECT MUST INSPECT ALL LANDSCAPE PLANTINGS INCLUDING, BUT NOT LIMITED TO, EXISTING TREES, REPLACEMENT TREES, BUFFER PLANTINGS, AND PARKING LOT ISLANDS. THE RIGHT-OF-WAY WILL BE INSPECTED BY THE FORESTRY DIVISION TO IDENTIFY ANY PLANTINGS, NEW OR EXISTING, THAT POSE A HAZARD TO THE SAFE USE OF THE RIGHT-OF-WAY. FORESTRY MAY REQUIRE THE DEVELOPER TO REMOVE, AND POSSIBLY REPLACE, ANY SUCH TREES.

2. ALL TREES AND SHRUBS MUST BE PLANTED AT LEAST 10' FROM THE EDGE OF A PUBLIC ROADWAY. SHADE TREES AND SHRUBS MUST BE PLANTED AT LEAST 5' FROM THE EDGE OF A PUBLIC WALKWAY. EVERGREEN AND ORNAMENTAL TREES MUST BE PLANTED AT LEAST 10' FROM THE EDGE OF A PUBLIC WALKWAY. ALL TREES AND SHRUBS MUST BE PLANTED AT LEAST 10' FROM ANY FIRE HYDRANT. SHADE AND EVERGREEN TREES MUST BE PLANTED AT LEAST 15' FROM THE NEAREST OVERHEAD WIRE AND AT LEAST 10' FROM THE NEAREST UNDERGROUND UTILITY.

3. NO TREE OR SHRUB MAY BE PLANTED WITHIN THE TRIANGULAR AREA FORMED AT THE INTERSECTION OF ANY STREET RIGHT-OF-WAY AT A DISTANCE OF 25' FROM THEIR POINT OF INTERSECTION, NO TREE OR SHRUB MAY BE PLANTED IN THE TRIANGULAR AREA FORMED AT THE INTERSECTION OF ANY DRIVEWAY WITH A PUBLIC SIDEWALK AT A DISTANCE ALONG EACH LINE OF 15' FROM THEIR POINT OF INTERSECTION.

4. PRIOR APPROVAL IS REQUIRED TO PLANT ANY TREE OR SHRUB IN THE PUBLIC RIGHT-OF-WAY.

5. NO SUBSTITUTIONS OR CHANGES OF LOCATION OR PLANT TYPES SHALL BE MADE WITHOUT THE APPROVAL OF THE DEVELOPER AND THE CITY OF ROCHESTER HILLS LANDSCAPE ARCHITECT.

6. THE DEVELOPER AND/OR THE CITY OF ROCHESTER HILLS LANDSCAPE ARCHITECT SHALL HAVE THE RIGHT, AT ANY STAGE OF THE INSTALLATION, TO REJECT ANY WORK OR MATERIAL THAT DOES NOT MEET THE REQUIREMENTS OF THE PLANS OR SPECIFICATIONS.

7. REPLACEMENT TREES MAY NOT BE PLANTED WITHIN THE DRIP LINE OF EXISTING TREES.

8. ALL LANDSCAPE BEDS ARE TO IRRIGATED BY AN AUTOMATIC IRRIGATION SYSTEM. WATER TAP AND ALL REQUIRED PUMPS AND METERS SHALL BE LOCATED WITHIN THE PROPOSED 15' LANDSCAPE BUFFER.

9. ALL LANDSCAPE BEDS ARE TO BE DRESSED WITH 4" OF SHREDDED BARK MULCH. MULCH IS TO BE FREE OF ANY ADDED COLORS OR CHEMICALS.

**TREE PROTECTION NOTES**

1. THE TREE PROTECTION FENCING (TPF) SHALL BE ERECTED PER THE PLANS APPROVED BY THE CITY OF ROCHESTER HILLS PLANNING DEPARTMENT. THE TPF MUST BE IN PLACE AND BE INSPECTED BY THE CITY OF ROCHESTER HILLS PRIOR TO THE START OF ANY EARTHWORK OR CONSTRUCTION OPERATIONS. IT IS THE DEVELOPERS RESPONSIBILITY TO CONTACT THE CITY PLANNING DEPARTMENT (248.656.4660) TO SCHEDULE A TPF INSPECTION. THE TPF SHALL REMAIN IN PLACE THROUGHOUT THE ENTIRE CONSTRUCTION PROCESS OR UNTIL THE CITY AUTHORIZES THE REMOVAL OR ISSUES A FINAL CERTIFICATE OF OCCUPANCY, WHICHEVER OCCURS FIRST.

2. UPON COMPLETION OF GRADING AND THE INSTALLATION OF THE INFRASTRUCTURE, A SECOND INSPECTION OF THE TPF AND THE TREES DESIGNATED FOR PRESERVATION IS REQUIRED BY THE CITY OF ROCHESTER HILLS' LANDSCAPE ARCHITECT PRIOR TO THE START OF ANY ADDITIONAL CONSTRUCTION. IT IS THE DEVELOPERS RESPONSIBILITY TO CONTACT THE CITY PLANNING DEPARTMENT (248.656.4660) TO SCHEDULE THIS TPF INSPECTION.

3. UPON COMPLETION OF ALL CONSTRUCTION AND PRIOR TO THE REMOVAL OF THE TPF, THE CITY OF ROCHESTER HILLS' LANDSCAPE ARCHITECT MUST INSPECT ALL TREES DESIGNATED TO BE PRESERVED. THE LANDSCAPE PERFORMANCE BOND WILL NOT BE RELEASED UNTIL THIS INSPECTION IS COMPLETE AND ALL RELATED ISSUES ARE RESOLVED. IT IS THE DEVELOPERS RESPONSIBILITY TO CONTACT THE CITY PLANNING DEPARTMENT (248.656.4660) TO SCHEDULE THIS INSPECTION.

4. ALL FINAL INSPECTION BY THE CITY OF ROCHESTER HILLS' LANDSCAPE ARCHITECT IS REQUIRED AT THE END OF THE WARRANTY AND MAINTENANCE PERIOD. THE LANDSCAPE MAINTENANCE BOND WILL NOT BE RELEASED UNTIL THIS INSPECTION IS COMPLETE AND ALL RELATED ISSUES ARE RESOLVED. IT IS THE DEVELOPERS RESPONSIBILITY TO CONTACT THE CITY PLANNING DEPARTMENT (248.656.4660) TO SCHEDULE A THIS INSPECTION.

5. THE TREE CONSERVATION ORDINANCE PROHIBITS ANY CONSTRUCTION OR DEVELOPMENT ACTIVITIES WITHIN THE DRIP LINE OF TREES DESIGNATED FOR PRESERVATION. THIS INCLUDES, BUT IS NOT LIMITED TO, LAND CLEARING, GRUBBING, TRENCHING, GRADING AND/OR FILLING. NO PERSON SHALL PLACE ANY SOLVENTS, BUILDING MATERIAL, CONSTRUCTION EQUIPMENT, SOIL DEPOSITS, OR HARMFUL MATERIALS WITHIN THE DRIP LINE OF TREES DESIGNATED FOR PRESERVATION.

6. PROPOSED GRADES ARE TO MATCH THE EXISTING ELEVATIONS OUTSIDE THE LIMITS OF THE TPF. NO GRADING, EITHER CUT OR FILL IS PERMITTED WITHIN THE DRIP LINE OF ANY TREE DESIGNATED FOR PRESERVATION.

7. DURING THE CONSTRUCTION PROCESS, NO PERSON SHALL ATTACH ANY DEVICE OR WIRE/CABLE/CORD/ROPE TO ANY EXISTING TREE DESIGNATED TO BE PRESERVED.

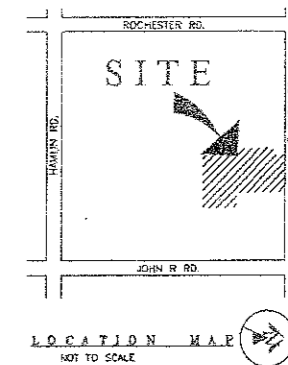
8. ALL UTILITY SERVICE REQUESTS MUST INCLUDE NOTIFICATION TO THE INSTALLER THAT PROTECTED TREES MUST BE AVOIDED. ALL TRENCHING SHALL OCCUR OUTSIDE THE TPF.

9. SWALES SHALL BE ROUTED TO AVOID THE AREA WITHIN THE DRIP LINE OF ANY TREE DESIGNATE FOR PRESERVATION. SWALES SHALL BE CONSTRUCTED SO AS NOT TO DIRECT ANY ADDITION FLOW INTO THE DRIP LINE OF A TREE DESIGNATED FOR PRESERVATION.

10. IF TREE PROTECTION CANNOT BE MAINTAINED FOR A TREE THROUGHOUT THE ENTIRE PERIOD REQUIRED, THEN TREE REPLACEMENT OF THAT TREE WILL BE REQUIRED ON AN INCH FOR INCH BASIS PRIOR TO THE ISSUANCE OF THE CERTIFICATE OF OCCUPANCY.

11. REGULATED TREES LOCATED OFF-SITE ON ADJACENT PROPERTIES THAT MAY BE AFFECTED BY CONSTRUCTION OPERATIONS MUST BE PROTECTED AS DEFINED HERE IN.

12. THE TPF SHALL CONSIST OF 4' HIGH ORANGE SNOW FENCING TO BE INSTALLED AROUND THE DRIP LINE OF ALL TREES DESIGNATED FOR PRESERVATION. THIS FENCING SHALL BE SUPPORTED BY 6" METAL T-BAR POSTS 8' O.C. AND DRIVEN A MINIMUM OF 24" INTO THE GROUND. THE TPF FENCING SHALL REMAIN UPRIGHT AND SECURELY IN PLACE FOR THE REQUIRED TIME AS SPECIFIED ABOVE.



**TREE REPLACEMENT NOTES**

TREE REPLACEMENT CREDIT AS FOLLOWS:

DECIDUOUS TREES - 3" cal.	= 2 REPLACEMENT TREES
2.5" cal.	= 1.5 REPLACEMENT TREES
2" cal.	= 1 REPLACEMENT TREES
CONIFEROUS TREES - 10' ht.	= 2 REPLACEMENT TREES
9' ht.	= 1.5 REPLACEMENT TREES
8' ht.	= 1 REPLACEMENT TREES

NUMBER OF TREES SURVEYED:	406
MINUS R.O.W. TREES:	- 4
MINUS DEAD TREES:	-44
MINUS EXEMPT TREES:	-56
NUMBER OF REGULATED TREES:	302
NUMBER OF TREES REMOVED:	-188
NUMBER OF REGULATED TREES TO REMAIN:	102
NUMBER OF TREES TO BE TRANSPLANTED:	+12
NUMBER OF REGULATED TREES TO BE PRESERVED:	114 (37%)

OFF SITE TREES REMOVED: 8

**REPLACEMENT NOTES**

TREE REPLACEMENT CREDITS REQUIRED:	188
TREE REPLACEMENT CREDITS PROVIDED:	188

TOTAL TREES PLANTED: 94

OFFSITE CREDITS REQUIRED: 8  
OFFSITE CREDITS PROVIDED: 8\*\*

\*\* REPLACEMENT TREES TO BE PLACED ON THE LOTS OF THE TREE(S) THAT THEY ARE REPLACING, AT THE DISCRETION OF THE CITY OF ROCHESTER HILLS LANDSCAPE ARCHITECT.

ENTRY DETAILS AND TREE DATA

ROCHESTER HILLS, MI

ROCHESTER MEADOWS



DATE	10.10.06	9.20.04
TIME	12.2.05	3.3.05
TIME	3.5.07	5.28.05
TIME	6.17.10	6.24.05
DATE	2/21/16	
DATE	BARV	
DATE	AS NOTED	

RELANDSCAPE ARCHITECT'S ESTIMATES. THESE QUANTITIES ARE NOT TO BE TAKEN AS DEFINITIVE. IT IS THE CITY OF ROCHESTER HILLS' RESPONSIBILITY TO VERIFY THE CONTRACTOR'S RESPONSIBILITY FOR HIS OWN ESTIMATES. ALL QUANTITIES TO BE REPORTED TO THE LANDSCAPE ARCHITECT'S OFFICE IMMEDIATELY. THESE DETAILS ETC. ARE THE PROPERTY OF JAMES C. SCOTT & ASSOCIATES, INC. AND MAY NOT BE REPRODUCED, COPIED, OR REPRODUCED WITHOUT THE WRITTEN CONSENT OF JAMES C. SCOTT & ASSOCIATES, INC. COPYRIGHT 2016



TAG #	D.B.H. IN INCHES	SPECIES	CONDITION & EXEMPTIONS	CROWN SPREAD	EXISTING ELEVATION	REMOVE/PRESERVE
230	11,10,9,8,7	MULBERRY - MORUS SPP	VERY POOR - R.O.W	20	755.40	REMOVE
231	12	NORWAY MAPLE - ACER PLATANOIDES	POOR - R.O.W	15	767.80	REMOVE
232	28	NORWAY MAPLE - ACER PLATANOIDES	FAIR - R.O.W	30	768.20	REMOVE
233	23	BLACK WILLOW - SALIX NIGRA	VERY POOR - R.O.W	25	791.10	REMOVE
235	22	COLORADO BLUE SPRUCE - PICEA PUNGENS	GOOD	15	790.00	PRESERVE
237	24	BLACK WALNUT - JUGLANS NIGRA	FAIR	25	782.30	PRESERVE
238	12	COLORADO BLUE SPRUCE - PICEA PUNGENS	VERY POOR	10	788.20	PRESERVE
239	19	NORWAY MAPLE - ACER PLATANOIDES	FAIR	30	786.00	PRESERVE
240	12,8,7,6	MULBERRY - MORUS SPP	VERY POOR	25	783.30	PRESERVE
241	32	BLACK WALNUT - JUGLANS NIGRA	GOOD	35	783.70	PRESERVE
242	12,8	BOXELDER MAPLE - ACER NEGUNDO	VERY POOR	20	783.60	REMOVE
243	8	NORWAY MAPLE - ACER PLATANOIDES	FAIR	15	782.90	PRESERVE/TRANSPLANT
244	11	NORWAY MAPLE - ACER PLATANOIDES	FAIR	15	783.00	REMOVE
245	8	AMERICAN ELM - ULMUS AMERICANA	DEAD	10	781.90	REMOVE
246	11,9	MULBERRY - MORUS SPP	VERY POOR	15	783.80	REMOVE
247	13,12	MULBERRY - MORUS SPP	VERY POOR	15	785.50	REMOVE
248	16	BLACK WALNUT - JUGLANS NIGRA	FAIR	20	783.00	PRESERVE
249	14,12	BLACK WALNUT - JUGLANS NIGRA	FAIR	20	785.50	PRESERVE
250	8	SHELLBARK HICKORY - CARYA LACINIOSA	FAIR	15	780.90	PRESERVE/TRANSPLANT
251	7	SHELLBARK HICKORY - CARYA LACINIOSA	FAIR	15	780.90	PRESERVE
254	9	BOXELDER MAPLE - ACER NEGUNDO	POOR	20	782.20	PRESERVE
255	9	AMERICAN ELM - ULMUS AMERICANA	POOR - EXEMPT	15	782.00	REMOVE
256	5,7	BLACK WALNUT - JUGLANS NIGRA	FAIR	15	781.80	PRESERVE
257	12	BLACK WALNUT - JUGLANS NIGRA	FAIR	15	781.60	PRESERVE
258	8	BLACK WALNUT - JUGLANS NIGRA	POOR	20	781.30	PRESERVE
259	26	BLACK WALNUT - JUGLANS NIGRA	POOR	40	785.10	REMOVE
260	44	WHITE OAK - QUERCUS ALBA	FAIR	50	786.50	REMOVE
261	32	BLACK WALNUT - JUGLANS NIGRA	FAIR	30	787.20	REMOVE
262	8	SCOTCH PINE - PINUS SYLVESTRIS	POOR	10	786.00	PRESERVE
263	12	SCOTCH PINE - PINUS SYLVESTRIS	FAIR	15	786.30	PRESERVE
264	9	BOXELDER MAPLE - ACER NEGUNDO	POOR	10	786.20	PRESERVE
265	13	BOXELDER MAPLE - ACER NEGUNDO	POOR	20	785.50	PRESERVE
267	7	BLACK WALNUT - JUGLANS NIGRA	GOOD	10	786.10	PRESERVE
268	13,12,12	BOXELDER MAPLE - ACER NEGUNDO	VERY POOR	20	788.30	REMOVE
269	18	BOXELDER MAPLE - ACER NEGUNDO	VERY POOR	25	787.90	REMOVE
270	17	BOXELDER MAPLE - ACER NEGUNDO	DEAD	20	785.10	REMOVE
271	2,6	BOXELDER MAPLE - ACER NEGUNDO	POOR	15	783.40	REMOVE
272	7	WHITE ASH - FRAXINUS AMERICANA	FAIR - EXEMPT	15	783.20	REMOVE
273	6	BOXELDER MAPLE - ACER NEGUNDO	POOR	10	782.30	REMOVE
274	6	WHITE ASH - FRAXINUS AMERICANA	GOOD - EXEMPT	15	782.20	REMOVE
275	6,8	WHITE ASH - FRAXINUS AMERICANA	POOR - EXEMPT	15	782.00	REMOVE
276	6	BOXELDER MAPLE - ACER NEGUNDO	VERY POOR	15	781.70	REMOVE
277	7,6	BOXELDER MAPLE - ACER NEGUNDO	VERY POOR	20	781.40	REMOVE
278	17,13	AMERICAN ELM - ULMUS AMERICANA	POOR - EXEMPT	25	781.70	REMOVE
279	25	BLACK WALNUT - JUGLANS NIGRA	FAIR	30	781.70	REMOVE
280	19	BOXELDER MAPLE - ACER NEGUNDO	POOR	25	781.00	REMOVE
281	11	BOXELDER MAPLE - ACER NEGUNDO	FAIR	10	780.10	PRESERVE
282	6	COLORADO BLUE SPRUCE - PICEA PUNGENS	VERY POOR	15	779.30	PRESERVE
283	9	COLORADO BLUE SPRUCE - PICEA PUNGENS	VERY POOR	10	779.00	PRESERVE
284	6	COLORADO BLUE SPRUCE - PICEA PUNGENS	VERY POOR	5	778.80	PRESERVE
285	22	COTTONWOOD - POPULUS DELTOIDES	GOOD	30	778.80	PRESERVE
286	13	BOXELDER MAPLE - ACER NEGUNDO	VERY POOR	15	778.90	PRESERVE
287	12,10	MULBERRY - MORUS SPP	VERY POOR	20	778.90	REMOVE
288	16	BOXELDER MAPLE - ACER NEGUNDO	VERY POOR	20	778.20	REMOVE
289	18,10,10	BOXELDER MAPLE - ACER NEGUNDO	VERY POOR	25	781.30	REMOVE
290	13	MULBERRY - MORUS SPP	VERY POOR	20	781.30	REMOVE
291	10	MULBERRY - MORUS SPP	VERY POOR	15	782.00	REMOVE
292	9	BOXELDER MAPLE - ACER NEGUNDO	DEAD	10	782.20	REMOVE
293	13,12,7	BOXELDER MAPLE - ACER NEGUNDO	POOR	20	783.00	REMOVE
294	7	BOXELDER MAPLE - ACER NEGUNDO	VERY POOR	10	783.00	REMOVE
295	10,7	BOXELDER MAPLE - ACER NEGUNDO	POOR	15	784.10	REMOVE
296	8	BOXELDER MAPLE - ACER NEGUNDO	VERY POOR	10	784.00	REMOVE
297	7	BOXELDER MAPLE - ACER NEGUNDO	DEAD	10	782.70	REMOVE
298	7	BOXELDER MAPLE - ACER NEGUNDO	VERY POOR	10	783.50	REMOVE
303	8	BOXELDER MAPLE - ACER NEGUNDO	POOR	10	782.80	REMOVE
304	9	BOXELDER MAPLE - ACER NEGUNDO	POOR	15	782.90	REMOVE
305	13,7	BOXELDER MAPLE - ACER NEGUNDO	POOR	20	783.40	REMOVE
306	6	BOXELDER MAPLE - ACER NEGUNDO	VERY POOR	10	784.10	REMOVE
307	8,8	BOXELDER MAPLE - ACER NEGUNDO	POOR	20	783.00	REMOVE
308	18	BOXELDER MAPLE - ACER NEGUNDO	POOR	15	781.80	REMOVE
309	12	MULBERRY - MORUS SPP	POOR	15	781.80	REMOVE
310	8	BOXELDER MAPLE - ACER NEGUNDO	VERY POOR	10	781.80	REMOVE
311	14	BOXELDER MAPLE - ACER NEGUNDO	GOOD	15	778.20	REMOVE
312	12	BOXELDER MAPLE - ACER NEGUNDO	POOR	10	778.00	PRESERVE
314	7	COTTONWOOD - POPULUS DELTOIDES	POOR	15	778.70	PRESERVE
315	7	COTTONWOOD - POPULUS DELTOIDES	POOR	10	778.30	PRESERVE
316	8	COTTONWOOD - POPULUS DELTOIDES	GOOD	10	777.40	PRESERVE
317	8	COTTONWOOD - POPULUS DELTOIDES	POOR	10	778.00	PRESERVE
318	11	BOXELDER MAPLE - ACER NEGUNDO	DEAD	15	778.80	PRESERVE
319	23	AMERICAN ELM - ULMUS AMERICANA	FAIR	30	781.50	REMOVE
320	17	BOXELDER MAPLE - ACER NEGUNDO	POOR	25	781.50	REMOVE
321	6	BOXELDER MAPLE - ACER NEGUNDO	VERY POOR	10	782.00	REMOVE
322	6	AMERICAN ELM - ULMUS AMERICANA	FAIR	10	782.00	PRESERVE/TRANSPLANT
323	11,6,6,6,6	BOXELDER MAPLE - ACER NEGUNDO	POOR	20	782.10	REMOVE
324	7,6	MULBERRY - MORUS SPP	VERY POOR	10	783.00	REMOVE
325	9,9,6	BOXELDER MAPLE - ACER NEGUNDO	POOR	20	781.80	REMOVE
326	8,7	BOXELDER MAPLE - ACER NEGUNDO	POOR	16	781.00	REMOVE
327	10,8	BOXELDER MAPLE - ACER NEGUNDO	POOR	20	780.80	REMOVE
328	8	BOXELDER MAPLE - ACER NEGUNDO	VERY POOR	10	778.70	REMOVE
329	15	BOXELDER MAPLE - ACER NEGUNDO	FAIR	20	777.30	PRESERVE
330	9	COTTONWOOD - POPULUS DELTOIDES	FAIR	10	777.20	PRESERVE
331	6	COTTONWOOD - POPULUS DELTOIDES	GOOD	10	777.20	PRESERVE
332	7	COTTONWOOD - POPULUS DELTOIDES	FAIR	15	777.00	PRESERVE
333	13	BOXELDER MAPLE - ACER NEGUNDO	FAIR	20	778.70	PRESERVE
334	9,9	BOXELDER MAPLE - ACER NEGUNDO	FAIR	20	778.70	PRESERVE
335	12	BOXELDER MAPLE - ACER NEGUNDO	POOR	15	778.40	PRESERVE
336	6	BOXELDER MAPLE - ACER NEGUNDO	DEAD	5	776.00	REMOVE
337	13	BOXELDER MAPLE - ACER NEGUNDO	POOR	15	776.00	PRESERVE
338	9,6	BOXELDER MAPLE - ACER NEGUNDO	POOR	15	775.90	PRESERVE
339	8,8	BOXELDER MAPLE - ACER NEGUNDO	POOR	15	775.80	PRESERVE
340	7	BOXELDER MAPLE - ACER NEGUNDO	POOR	10	776.50	PRESERVE
341	10	BOXELDER MAPLE - ACER NEGUNDO	POOR	15	775.80	REMOVE
342	6	BOXELDER MAPLE - ACER NEGUNDO	POOR	5	775.70	PRESERVE
343	15	BOXELDER MAPLE - ACER NEGUNDO	POOR	15	775.20	REMOVE
344	9	COTTONWOOD - POPULUS DELTOIDES	GOOD	10	774.90	REMOVE
345	7	COTTONWOOD - POPULUS DELTOIDES	GOOD	5	774.90	PRESERVE
346	7	COTTONWOOD - POPULUS DELTOIDES	GOOD	1	777.00	PRESERVE
347	9	BLACK WILLOW - SALIX NIGRA	POOR	15	777.00	PRESERVE
348	8,8	BOXELDER MAPLE - ACER NEGUNDO	VERY POOR	15	776.90	PRESERVE
349	16	BOXELDER MAPLE - ACER NEGUNDO	POOR	15	778.50	REMOVE
350	7,8	BOXELDER MAPLE - ACER NEGUNDO	POOR	10	779.10	REMOVE

TAG #	D.B.H. IN INCHES	SPECIES	CONDITION & EXEMPTIONS	CROWN SPREAD	EXISTING ELEVATION	REMOVE/PRESERVE
351	13,8,7,6	MULBERRY - MORUS SPP	POOR	25	781.10	REMOVE
352	2,8,7,7,6	BOXELDER MAPLE - ACER NEGUNDO	VERY POOR	20	782.50	REMOVE
353	7	BOXELDER MAPLE - ACER NEGUNDO	FAIR	10	783.30	REMOVE
354	6,6	BOXELDER MAPLE - ACER NEGUNDO	VERY POOR	15	782.30	REMOVE
355	10	BOXELDER MAPLE - ACER NEGUNDO	POOR	15	783.20	REMOVE
356	7,7,7	BOXELDER MAPLE - ACER NEGUNDO	POOR	15	783.20	REMOVE
357	11	SHELLBARK HICKORY - CARYA LACINIOSA	FAIR	20	784.20	PRESERVE/TRANSPLANT
358	17	MULBERRY - MORUS SPP	POOR	20	783.60	REMOVE
359	11,8	BOXELDER MAPLE - ACER NEGUNDO	POOR	20	783.70	REMOVE
360	7	BOXELDER MAPLE - ACER NEGUNDO	POOR	15	786.60	REMOVE
361	7	BOXELDER MAPLE - ACER NEGUNDO	FAIR	10	781.80	REMOVE
362	8	BOXELDER MAPLE - ACER NEGUNDO	POOR	10	782.40	REMOVE
363	8	BOXELDER MAPLE - ACER NEGUNDO	POOR	10	781.10	REMOVE
364	8	BOXELDER MAPLE - ACER NEGUNDO	VERY POOR	10	778.50	PRESERVE
365	8	BOXELDER MAPLE - ACER NEGUNDO	VERY POOR	15	776.50	PRESERVE
366	9,7	BOXELDER MAPLE - ACER NEGUNDO	POOR	15	776.70	PRESERVE
367	9	BOXELDER MAPLE - ACER NEGUNDO	POOR	15	776.60	PRESERVE
368	6	BOXELDER MAPLE - ACER NEGUNDO	POOR	15	776.70	PRESERVE
369	6	WHITE ASH - FRAXINUS AMERICANA	FAIR - EXEMPT	15	776.60	REMOVE
370	7	WHITE ASH - FRAXINUS AMERICANA	GOOD - EXEMPT	10	774.60	REMOVE
371	14,13	BOXELDER MAPLE - ACER NEGUNDO	POOR	25	773.20	REMOVE
372	12,11	BOXELDER MAPLE - ACER NEGUNDO	POOR	20	773.30	REMOVE
373	14	AMERICAN ELM - ULMUS AMERICANA	VERY POOR - EXEMPT	20	773.30	REMOVE
374	12	BOXELDER MAPLE - ACER NEGUNDO	FAIR	15	774.00	REMOVE
375	20	COTTONWOOD - POPULUS DELTOIDES	FAIR	25	774.20	REMOVE
376	13,10	BOXELDER MAPLE - ACER NEGUNDO	POOR	15	777.00	PRESERVE
377	12	AMERICAN ELM - ULMUS AMERICANA	FAIR	15	776.10	PRESERVE
378	8	EASTERN WHITE PINE - PINUS STROBUS	GOOD	10	776.60	PRESERVE
379	11	BALSAM POPLAR - POPULUS BALSAMIFERA	FAIR	10	781.50	REMOVE
380	8	WHITE ASH - FRAXINUS AMERICANA	GOOD - EXEMPT	10	781.50	REMOVE
381	13	BOXELDER MAPLE - ACER NEGUNDO	POOR	15	781.50	REMOVE
382	6	WHITE ASH - FRAXINUS AMERICANA	EXCELLENT - EXEMPT	10	781.70	REMOVE
383	8	WHITE ASH - FRAXINUS AMERICANA	FAIR - EXEMPT	10	783.00	REMOVE
384	6	WHITE ASH - FRAXINUS AMERICANA	FAIR - EXEMPT	10	783.40	REMOVE
385	6	BOXELDER MAPLE - ACER NEGUNDO	POOR	10	782.70	REMOVE
386	8	BOXELDER MAPLE - ACER NEGUNDO	POOR	10	784.00	REMOVE
387	10,6	BLACK WALNUT - JUGLANS NIGRA	POOR	15	783.40	REMOVE
388	8,8	BLACK CHERRY - PRUNUS SCROTIANA	POOR	10	781.50	REMOVE
389	8	BOXELDER MAPLE - ACER NEGUNDO	POOR	10	781.40	REMOVE
390	7	BOXELDER MAPLE - ACER NEGUNDO	FAIR	10	781.20	REMOVE
391	6	BOXELDER MAPLE - ACER NEGUNDO	POOR	10	780.70	REMOVE
392	11,8,7	BOXELDER MAPLE - ACER NEGUNDO	FAIR	15	781.00	REMOVE
393	9,8,8	BOXELDER MAPLE - ACER NEGUNDO	POOR	15	779.00	REMOVE
394	10	AMERICAN ELM - ULMUS AMERICANA	FAIR	15	780.00	REMOVE
395	9,7	BOXELDER MAPLE - ACER NEGUNDO	FAIR	15	781.30	REMOVE
396	6,6	BOXELDER MAPLE - ACER NEGUNDO	FAIR	10	781.30	REMOVE
400	9,8,8,7,6	APPLE - MALUS SPP	GOOD	20	787.00	PRESERVE
401	7	APPLE - MALUS SPP	FAIR	10	788.20	PRESERVE
402	10,9,8,8,8	APPLE - MALUS SPP	GOOD	25	788.00	PRESERVE
403	20,13	ASHWOOD - BUA AMERICANA	DEAD	25	789.10	REMOVE
404	10,7	APPLE - MALUS SPP	POOR	15	789.10	PRESERVE
405	12,11	APPLE - MALUS SPP	POOR	15	789.10	PRESERVE
406	8,6	PEAR - PYRUS SPP	POOR	10	788.20	REMOVE
407	13,8	PEAR - PYRUS SPP	POOR	15	788.40	REMOVE
408	7	BLACK CHERRY - PRUNUS SCROTIANA	POOR	10	772.00	PRESERVE
409	12	BOXELDER MAPLE - ACER NEGUNDO	FAIR	15	771.50	REMOVE
410	11,8	BOXELDER MAPLE - ACER NEGUNDO	POOR	20	771.60	REMOVE
411	14	GREEN ASH - FRAXINUS PENNSYLVANICA	GOOD - EXEMPT	15	769.40	REMOVE
412	12	BOXELDER MAPLE - ACER NEGUNDO	GOOD	15	769.30	REMOVE
413	6	BOXELDER MAPLE - ACER NEGUNDO	FAIR	10	769.80	REMOVE
414	7	BOXELDER MAPLE - ACER NEGUNDO	GOOD	10	773.50	PRESERVE
415	12,9	BOXELDER MAPLE - ACER NEGUNDO	GOOD	15	772.80	REMOVE
416	13	BALSAM POPLAR - POPULUS BALSAMIFERA	POOR	5	773.70	PRESERVE
417	12	BALSAM POPLAR - POPULUS BALSAMIFERA	VERY POOR	10	774.40	PRESERVE
418	10	BALSAM POPLAR - POPULUS BALSAMIFERA	FAIR	10	776.50	PRESERVE
419	7	BALSAM POPLAR - POPULUS BALSAMIFERA	VERY POOR	5	776.70	PRESERVE
420	8	BALSAM POPLAR - POPULUS BALSAMIFERA	POOR	5	776.80	PRESERVE</

TAG #	D.B.H. IN INCHES	SPECIES	CONDITION & EXEMPTIONS	CROWN SPREAD	EXISTING ELEVATION	REMOVE/PRESERVE
521	16	NORWAY MAPLE - ACER PLATANOIDES	FAIR	20	758.75	REMOVE
522	12.9.0	APPLE - MALUS SPP	VERY POOR	15	769.00	REMOVE
523	7	BOXELDER MAPLE - ACER NEGUNDO	POOR	15	769.10	REMOVE
524	6	WHITE ASH - FRAXINUS AMERICANA	FAIR - EXEMPT	10	769.10	REMOVE
525	11	GREEN ASH - FRAXINUS PENNSYLVANICA	FAIR - EXEMPT	10	767.00	REMOVE
526	10	WHITE ASH - FRAXINUS AMERICANA	FAIR - EXEMPT	15	769.00	REMOVE
527	10	WHITE ASH - FRAXINUS AMERICANA	GOOD - EXEMPT	15	770.20	REMOVE
528	10.10.0.0	APPLE - MALUS SPP	VERY POOR	20	769.50	REMOVE
529	12.11.10	APPLE - MALUS SPP	POOR	20	769.40	REMOVE
530	6	WHITE ASH - FRAXINUS AMERICANA	POOR - EXEMPT	5	769.50	REMOVE
531	10.10.0.0	APPLE - MALUS SPP	VERY POOR	25	769.40	REMOVE
532	11	GREEN ASH - FRAXINUS PENNSYLVANICA	POOR - EXEMPT	15	769.10	REMOVE
533	8	BLACK CHERRY - PRUNUS SEROTINA	POOR	10	769.50	REMOVE
534	8	WHITE ASH - FRAXINUS AMERICANA	POOR - EXEMPT	10	769.00	REMOVE
535	13	APPLE - MALUS SPP	VERY POOR	10	769.10	REMOVE
536	10.10.10.0	APPLE - MALUS SPP	POOR	20	770.40	REMOVE
537	2.8.7	APPLE - MALUS SPP	VERY POOR	15	771.20	REMOVE
538	10	GREEN ASH - FRAXINUS PENNSYLVANICA	POOR - EXEMPT	15	771.20	REMOVE
539	0	GREEN ASH - FRAXINUS PENNSYLVANICA	POOR - EXEMPT	15	770.00	REMOVE
540	14	APPLE - MALUS SPP	POOR	15	770.10	REMOVE
541	8.7.7.7.7	APPLE - MALUS SPP	POOR	15	770.00	REMOVE
542	10	GREEN ASH - FRAXINUS PENNSYLVANICA	FAIR - EXEMPT	10	770.10	REMOVE
543	11.10.0.6	APPLE - MALUS SPP	POOR	15	770.10	REMOVE
544	11.8.5.7	APPLE - MALUS SPP	FAIR	15	769.80	REMOVE
545	6	AMERICAN ELM - ULMUS AMERICANA	VERY POOR - EXEMPT	5	770.20	REMOVE
546	7	GREEN ASH - FRAXINUS PENNSYLVANICA	DEAD	10	769.40	REMOVE
547	12.0.0.0.7	APPLE - MALUS SPP	VERY POOR	20	770.00	REMOVE
548	10.9	APPLE - MALUS SPP	POOR	15	770.00	REMOVE
549	10	AMERICAN ELM - ULMUS AMERICANA	FAIR	10	769.50	REMOVE
550	7	WHITE ASH - FRAXINUS AMERICANA	VERY POOR	10	769.50	REMOVE
551	14	AMERICAN ELM - ULMUS AMERICANA	GOOD	20	769.50	REMOVE
552	10.8	GREEN ASH - FRAXINUS PENNSYLVANICA	VERY POOR	20	769.70	REMOVE
553	10.8	AMERICAN ELM - ULMUS AMERICANA	GOOD	20	769.50	REMOVE
554	14	GREEN ASH - FRAXINUS PENNSYLVANICA	VERY POOR/BEHOLD TREE-EXEMPT	10	769.50	REMOVE
555	15	AMERICAN ELM - ULMUS AMERICANA	FAIR	15	761.00	REMOVE
556	10	AMERICAN ELM - ULMUS AMERICANA	FAIR	20	761.20	REMOVE
557	11	AMERICAN ELM - ULMUS AMERICANA	VERY POOR - EXEMPT	20	761.30	REMOVE
558	14	AMERICAN ELM - ULMUS AMERICANA	DEAD	15	761.40	REMOVE
559	13	AMERICAN ELM - ULMUS AMERICANA	DEAD	15	761.50	REMOVE
560	10	AMERICAN ELM - ULMUS AMERICANA	DEAD	10	761.50	REMOVE
561	12	AMERICAN ELM - ULMUS AMERICANA	GOOD	25	761.50	REMOVE
562	12	AMERICAN ELM - ULMUS AMERICANA	FAIR	15	763.50	REMOVE
563	14	AMERICAN ELM - ULMUS AMERICANA	FAIR	20	765.00	REMOVE
564	11.11	GREEN ASH - FRAXINUS PENNSYLVANICA	POOR - EXEMPT	20	765.50	REMOVE
565	8	WALNUT - JUGLANS NIGRA	POOR	10	767.30	REMOVE
566	6	GREEN ASH - FRAXINUS PENNSYLVANICA	POOR - EXEMPT	5	767.10	REMOVE
567	8	GREEN ASH - FRAXINUS PENNSYLVANICA	POOR - EXEMPT	5	767.00	REMOVE
568	13	GREEN ASH - FRAXINUS PENNSYLVANICA	FAIR - EXEMPT	15	766.40	REMOVE
569	11	GREEN ASH - FRAXINUS PENNSYLVANICA	FAIR - EXEMPT	15	766.30	REMOVE
570	7	GREEN ASH - FRAXINUS PENNSYLVANICA	POOR - EXEMPT	10	766.10	REMOVE
571	2	GREEN ASH - FRAXINUS PENNSYLVANICA	POOR - EXEMPT	10	766.40	REMOVE
572	7	WHITE ASH - FRAXINUS AMERICANA	POOR - EXEMPT	15	768.00	REMOVE
573	6	GREEN ASH - FRAXINUS PENNSYLVANICA	POOR - EXEMPT	10	767.40	REMOVE
574	16	APPLE - MALUS SPP	VERY POOR	10	767.40	REMOVE
575	9	WHITE ASH - FRAXINUS AMERICANA	GOOD - EXEMPT	10	767.40	REMOVE
576	10.0	APPLE - MALUS SPP	DEAD	15	766.00	REMOVE
577	0.3.7	APPLE - MALUS SPP	VERY POOR	15	766.00	REMOVE
578	11.0.0	APPLE - MALUS SPP	VERY POOR	15	766.30	REMOVE
579	12	APPLE - MALUS SPP	VERY POOR	15	766.50	REMOVE
580	15.11	APPLE - MALUS SPP	VERY POOR	10	767.10	PRESERVE/TRANSPLANT
581	7	AMERICAN ELM - ULMUS AMERICANA	GOOD	10	766.40	PRESERVE/TRANSPLANT
582	7	AMERICAN ELM - ULMUS AMERICANA	GOOD	10	766.40	REMOVE
583	11.10.0	APPLE - MALUS SPP	POOR	15	766.00	REMOVE
584	11.0.0.0.6	APPLE - MALUS SPP	POOR	20	766.00	REMOVE
585	13.10.0.7	APPLE - MALUS SPP	VERY POOR	20	766.30	REMOVE
586	6	GREEN ASH - FRAXINUS PENNSYLVANICA	DEAD	5	766.80	REMOVE
587	10.0.6	APPLE - MALUS SPP	VERY POOR	15	767.00	REMOVE
588	10	AMERICAN ELM - ULMUS AMERICANA	FAIR	15	766.70	REMOVE
589	2.6	EASTERN RED CEDAR - JUNIPERUS WIDOWIANA	POOR	10	768.40	REMOVE
590	13	AMERICAN ELM - ULMUS AMERICANA	POOR - EXEMPT	15	768.80	REMOVE
591	11.7	GREEN ASH - FRAXINUS PENNSYLVANICA	FAIR - EXEMPT	20	769.00	REMOVE
592	17	COTTONWOOD - POPULUS DELTOIDES	FAIR	20	769.30	PRESERVE
593	11.7	APPLE - MALUS SPP	VERY POOR	15	770.20	REMOVE
594	9	BOXELDER MAPLE - ACER NEGUNDO	POOR	15	770.40	REMOVE
595	9	WHITE ASH - FRAXINUS AMERICANA	FAIR - EXEMPT	10	771.00	REMOVE
596	14	AMERICAN ELM - ULMUS AMERICANA	POOR - EXEMPT	20	763.00	REMOVE
597	18	BLACK WALNUT - JUGLANS NIGRA	POOR	25	765.70	REMOVE
598	14	AMERICAN ELM - ULMUS AMERICANA	DEAD	20	761.80	REMOVE
599	14	AMERICAN ELM - ULMUS AMERICANA	DEAD	20	761.80	REMOVE
600	14	AMERICAN ELM - ULMUS AMERICANA	DEAD	20	761.80	REMOVE
601	14	AMERICAN ELM - ULMUS AMERICANA	DEAD	20	761.80	REMOVE
602	10	SILVER MAPLE - ACER SACCHARINUM	GOOD	35	779.50	PRESERVE
603	23	NORWAY MAPLE - ACER PLATANOIDES	POOR	25	769.00	PRESERVE
604	18	NORWAY MAPLE - ACER PLATANOIDES	FAIR	20	769.20	PRESERVE
605	20	EASTERN WHITE PINE - PINUS STROBUS	FAIR	25	781.50	PRESERVE
606	24	SILVER MAPLE - ACER SACCHARINUM	POOR	20	781.00	REMOVE
607	24	BLACK WALNUT - JUGLANS NIGRA	FAIR	20	780.20	REMOVE
608	7	AMERICAN ELM - ULMUS AMERICANA	FAIR	15	776.50	REMOVE
609	6	WHITE ASH - FRAXINUS AMERICANA	FAIR - EXEMPT	10	776.20	REMOVE
610	2	WHITE ASH - FRAXINUS AMERICANA	FAIR - EXEMPT	10	775.10	REMOVE
611	10.10.7	APPLE - MALUS SPP	VERY POOR	15	774.00	REMOVE
612	16	BLACK WALNUT - JUGLANS NIGRA	GOOD	20	774.00	REMOVE
613	8.0.0.0.6	APPLE - MALUS SPP	POOR	20	774.00	REMOVE
614	14	AMERICAN ELM - ULMUS AMERICANA	GOOD	20	771.00	REMOVE
615	17	GREEN ASH - FRAXINUS PENNSYLVANICA	GOOD - EXEMPT	20	767.40	REMOVE
616	14	APPLE - MALUS SPP	POOR	15	770.00	PRESERVE
617	10.0.0.7	APPLE - MALUS SPP	POOR	15	769.40	PRESERVE
618	11.0.0.5	APPLE - MALUS SPP	POOR	15	766.00	REMOVE
619	10.0.0	APPLE - MALUS SPP	POOR	16	764.40	REMOVE
620	7	BOXELDER MAPLE - ACER NEGUNDO	POOR	15	769.00	PRESERVE
621	8	WALNUT - JUGLANS NIGRA	VERY POOR	10	769.00	PRESERVE
622	11	WALNUT - JUGLANS NIGRA	VERY POOR	20	766.00	PRESERVE
623	8	NORWAY MAPLE - ACER PLATANOIDES	POOR	15	785.00	REMOVE
624	6.5	AMERICAN ELM - ULMUS AMERICANA	DEAD	10	762.50	REMOVE
625	12	AMERICAN ELM - ULMUS AMERICANA	DEAD	15	763.00	REMOVE
626	12	AMERICAN ELM - ULMUS AMERICANA	DEAD	15	763.00	REMOVE
627	7	DOG ELM - ULMUS THOMASII	FAIR	10	792.20	PRESERVE/TRANSPLANT
628	11	AMERICAN ELM - ULMUS AMERICANA	DEAD	10	784.00	REMOVE
629	12.11	AMERICAN ELM - ULMUS AMERICANA	DEAD	20	786.00	REMOVE
630	10.11	AMERICAN ELM - ULMUS AMERICANA	DEAD	20	785.00	REMOVE
631	10.11	AMERICAN ELM - ULMUS AMERICANA	DEAD	5	785.50	REMOVE
632	10.7	GREEN ASH - FRAXINUS PENNSYLVANICA	VERY POOR - EXEMPT	10	793.00	REMOVE
633	7	DOG ELM - ULMUS THOMASII	DEAD	5	784.50	REMOVE
634	7	DOG ELM - ULMUS THOMASII	DEAD	5	784.50	REMOVE
635	7	SHELL BARK HICKORY - CARYA LACINIOSA	FAIR	15	793.80	PRESERVE
636	7	AMERICAN ELM - ULMUS AMERICANA	POOR - EXEMPT	15	781.50	REMOVE
637	8	BOXELDER MAPLE - ACER NEGUNDO	POOR	10	783.20	PRESERVE
638	8	BOXELDER MAPLE - ACER NEGUNDO	POOR	10	783.40	REMOVE
639	10.6	BOXELDER MAPLE - ACER NEGUNDO	POOR	15	785.10	REMOVE
640	10.6	COTTONWOOD - POPULUS DELTOIDES	FAIR	15	728.40	PRESERVE

TAG #	D.B.H. IN INCHES	SPECIES	CONDITION & EXEMPTIONS	CROWN SPREAD	EXISTING ELEVATION	REMOVE/PRESERVE
1001	6	COTTONWOOD - POPULUS DELTOIDES	FAIR	5	776.50	PRESERVE
1002	7	COTTONWOOD - POPULUS DELTOIDES	FAIR	10	776.50	PRESERVE
1003	9	COTTONWOOD - POPULUS DELTOIDES	FAIR	10	777.00	PRESERVE
1004	6	COTTONWOOD - POPULUS DELTOIDES	FAIR	10	776.60	REMOVE
1005	7	COTTONWOOD - POPULUS DELTOIDES	POOR	10	776.60	PRESERVE
1006	11	BOXELDER MAPLE - ACER NEGUNDO	VERY POOR	15	777.70	PRESERVE
1007	6	BOXELDER MAPLE - ACER NEGUNDO	POOR	10	776.30	PRESERVE
1008	7	BOXELDER MAPLE - ACER NEGUNDO	POOR	10	777.40	PRESERVE
1009	8	COTTONWOOD - POPULUS DELTOIDES	FAIR	5	776.20	PRESERVE
1010	8	COTTONWOOD - POPULUS DELTOIDES	POOR	10	777.10	PRESERVE
1011	8	COTTONWOOD - POPULUS DELTOIDES	POOR	10	777.10	PRESERVE
1012	8	COTTONWOOD - POPULUS DELTOIDES	FAIR	10	777.80	PRESERVE
1013	8	COTTONWOOD - POPULUS DELTOIDES	FAIR	10	777.40	PRESERVE
1014	6	COTTONWOOD - POPULUS DELTOIDES	FAIR	5	776.70	PRESERVE
1015	7	AMERICAN ELM - ULMUS AMERICANA	DEAD	10	780.20	REMOVE
1016	9.9.8	BOXELDER MAPLE - ACER NEGUNDO	POOR	20	784.40	REMOVE
1017	2.7	APPLE - MALUS SPP	GOOD	15	783.40	REMOVE
1018	6	BOXELDER MAPLE - ACER NEGUNDO	VERY POOR	10	783.80	REMOVE
1019	6	BOXELDER MAPLE - ACER NEGUNDO	VERY POOR	15	783.80	REMOVE
1020	6	BOXELDER MAPLE - ACER NEGUNDO	VERY POOR	15	783.80	REMOVE
1021	8	BOXELDER MAPLE - ACER NEGUNDO	POOR	15	783.20	REMOVE
1022	8	AMERICAN ELM - ULMUS AMERICANA	GOOD	15	778.80	REMOVE
1023	6	BLACK CHERRY - PRUNUS SEROTINA	POOR	10	778.40	REMOVE
1024	7	WHITE ASH - FRAXINUS AMERICANA	GOOD - EXEMPT	10	778.00	REMOVE
1025	6	COTTONWOOD - POPULUS DELTOIDES	FAIR	10	777.50	PRESERVE
1026	8	BOXELDER MAPLE - ACER NEGUNDO	VERY POOR	10	776.80	REMOVE
1027	12.10	APPLE - MALUS SPP	VERY POOR	20	776.20	REMOVE
1028	3.6	APPLE - MALUS SPP	VERY POOR	15	776.20	REMOVE
1029	11	APPLE - MALUS SPP	DEAD	10	776.20	REMOVE
1030	10.8	APPLE - MALUS SPP	DEAD	15	776.50	REMOVE
1031	15.12	APPLE - MALUS SPP	DEAD	15	776.10	REMOVE
1032	14.0.0.7	APPLE - MALUS SPP	DEAD	20	775.50	REMOVE
1033	10.10.9.9	APPLE - MALUS SPP	DEAD	15	773.40	REMOVE
1034	6	AMERICAN ELM - ULMUS AMERICANA	FAIR	10	773.60	REMOVE
1035	12.11.10.0.0	APPLE - MALUS SPP	DEAD	15	772.50	REMOVE
1036	8	BOXELDER MAPLE - ACER NEGUNDO	POOR	15	772.30	REMOVE
1037	10.0.7.7	APPLE - MALUS SPP	DEAD	15	772.80	REMOVE
1038	10	BOXELDER MAPLE - ACER NEGUNDO	VERY POOR	20	772.40	REMOVE
1039	11.6.5	APPLE - MALUS SPP	DEAD	15	776.00	REMOVE
1040	16.14.14.13.13	BOXELDER MAPLE - ACER NEGUNDO	DEAD	25	773.00	REMOVE
1041	8.6	APPLE - MALUS SPP	FAIR	10	774.40	REMOVE
1042	7	BALSAM POPLAR - POPULUS BALSAMIFERA	FAIR	5	774.80	PRESERVE
1043	6	BALSAM POPLAR - POPULUS BALSAMIFERA	VERY POOR	5	774.40	PRESERVE
1044	8	BALSAM POPLAR - POPULUS BALSAMIFERA	VERY POOR	5	775.50	PRESERVE
1045	11	BALSAM POPLAR - POPULUS BALSAMIFERA	POOR	10	776.00	PRESERVE
1046	8	BALSAM POPLAR - POPULUS BALSAMIFERA	POOR	10	775.80	PRESERVE
1047	10	BALSAM POPLAR - POPULUS BALSAMIFERA	VERY POOR	5	775.50	PRESERVE
1048	8	BALSAM POPLAR - POPULUS BALSAMIFERA	POOR	5	775.00	PRESERVE
1049	6	BLACK CHERRY - PRUNUS SEROTINA	VERY POOR	10	770.50	REMOVE
1050	10.9	BLACK CHERRY - PRUNUS SEROTINA	VERY POOR	10	770.90	REMOVE
1051	8.8	BLACK CHERRY - PRUNUS SEROTINA	POOR	10	771.00	PRESERVE
1052	7	WHITE ASH - FRAXINUS AMERICANA	FAIR - EXEMPT	5	767.30	REMOVE
1053	6	AMERICAN ELM - ULMUS AMERICANA	DEAD	5	766.10	REMOVE
1054	9.9	APPLE - MALUS SPP	DEAD	10	770.20	REMOVE
1055	8	BOXELDER MAPLE - ACER NEGUNDO	POOR	10	770.50	REMOVE
1056	7	APPLE - MALUS SPP	DEAD	10	772.20	PRESERVE/TRANSPLANT
1057	8.7.8	APPLE - MALUS SPP	DEAD	10	768.40	REMOVE
1058						

