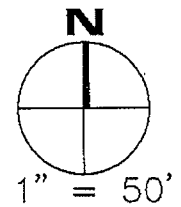
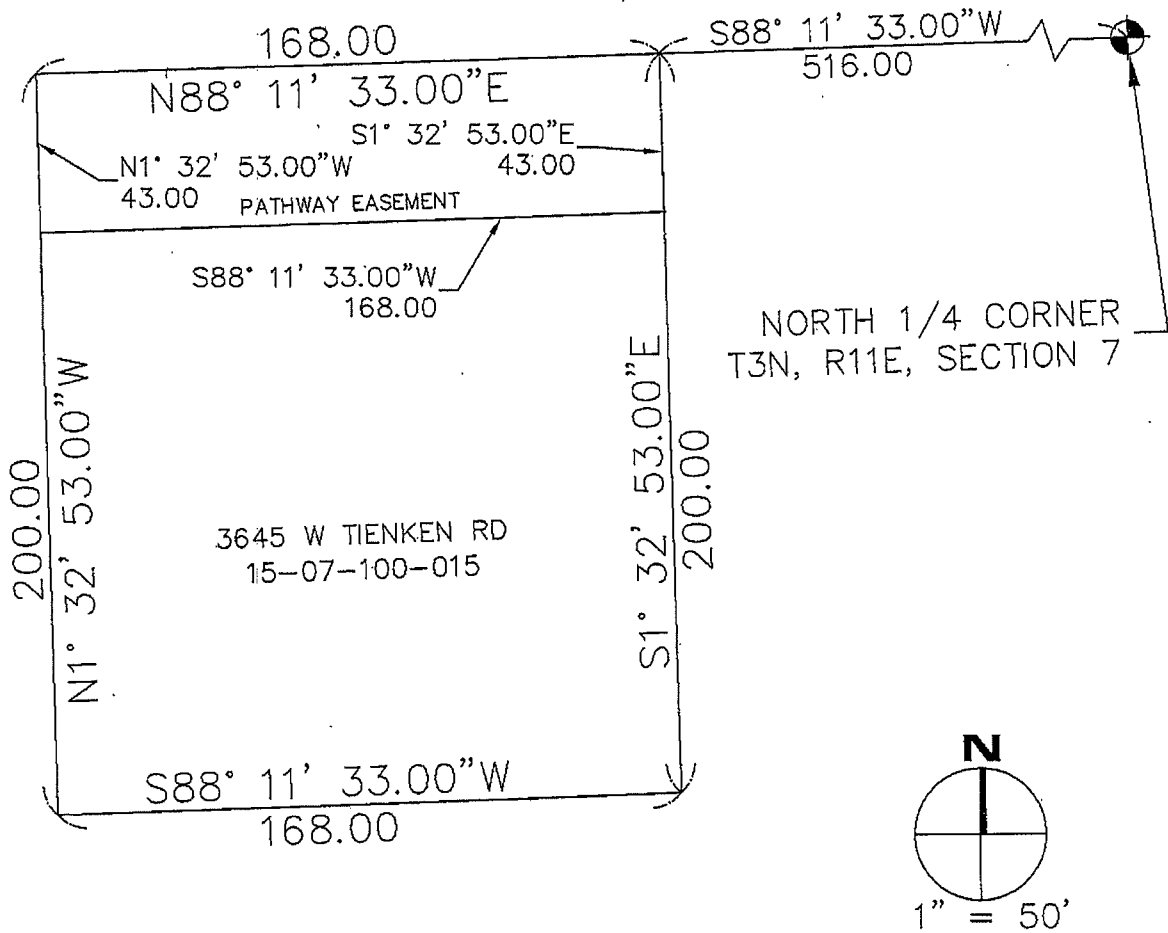


EXHIBIT A

TIENKEN ROAD



PARCEL

Part of northwest 1/4 of Section 7, Township 3 North, Range 11 East, City of Rochester Hills, Oakland County, Michigan, described as: Beginning at point distant S 88°11'33" W 516 feet from North 1/4 corner, Thence South 01°32'53" East 200 feet, thence South 88°11'33" West 168 feet, Thence North 01°32'53" West 200 feet, Thence North 88°11'33" East 168 feet to the point of beginning, containing 33599.7 square feet (.771 acres) more or less.

PATHWAY EASEMENT

Part of northwest 1/4 of Section 7, Township 3 North, Range 11 East, City of Rochester Hills, Oakland County, Michigan, described as: Beginning at point distant S 88°11'33" W 516 feet from North 1/4 corner, Thence South 01°32'53" East 43 feet, Thence South 88°11'33" West 168 feet, Thence North 01°32'53" West 43 feet, Thence North 88°11'33" East 168 feet to the point of beginning, containing 7215.3461 square feet. (0.166 acres) more or less.