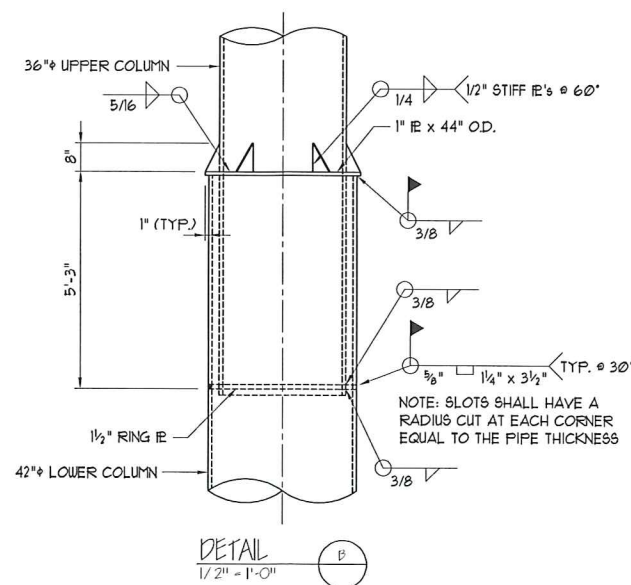
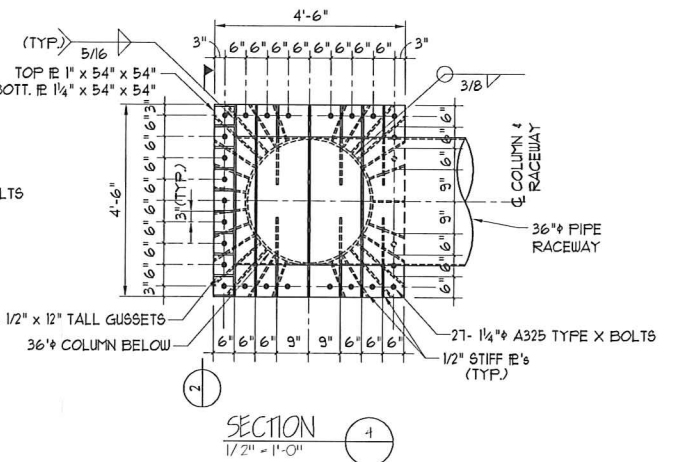
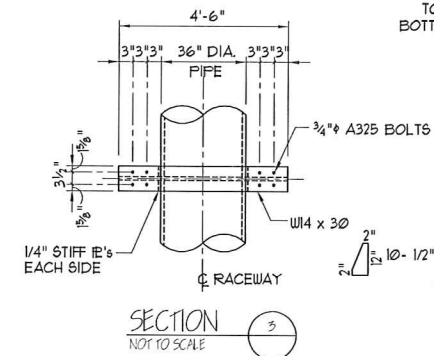
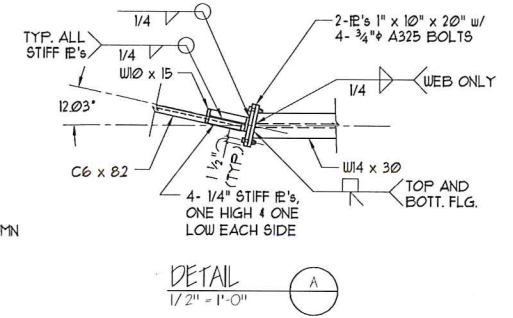
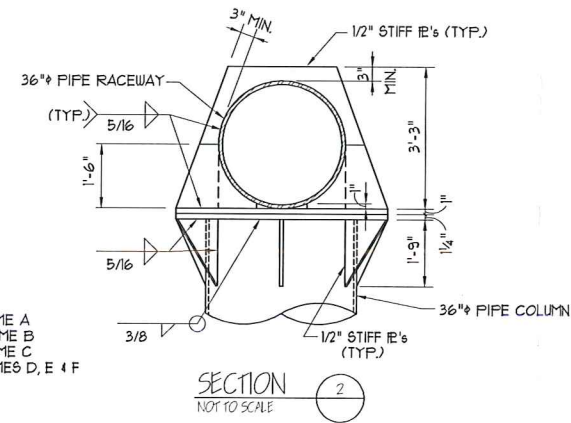
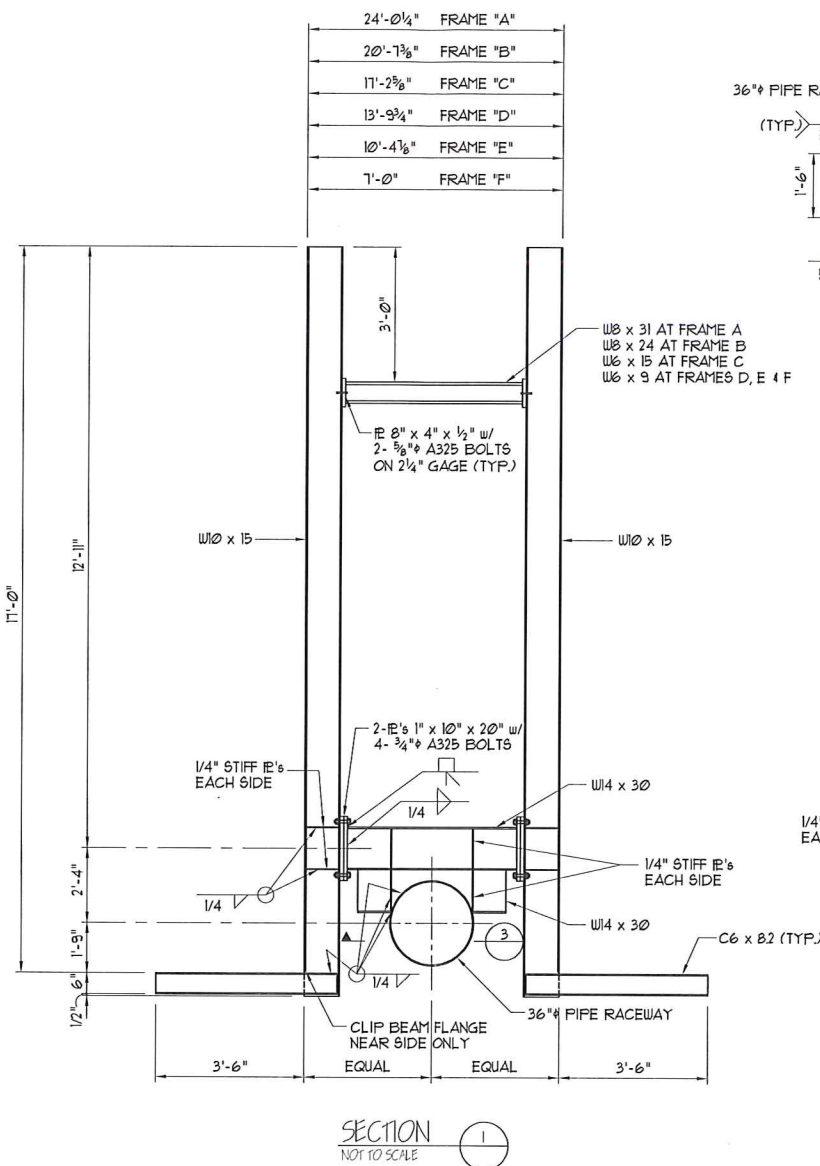
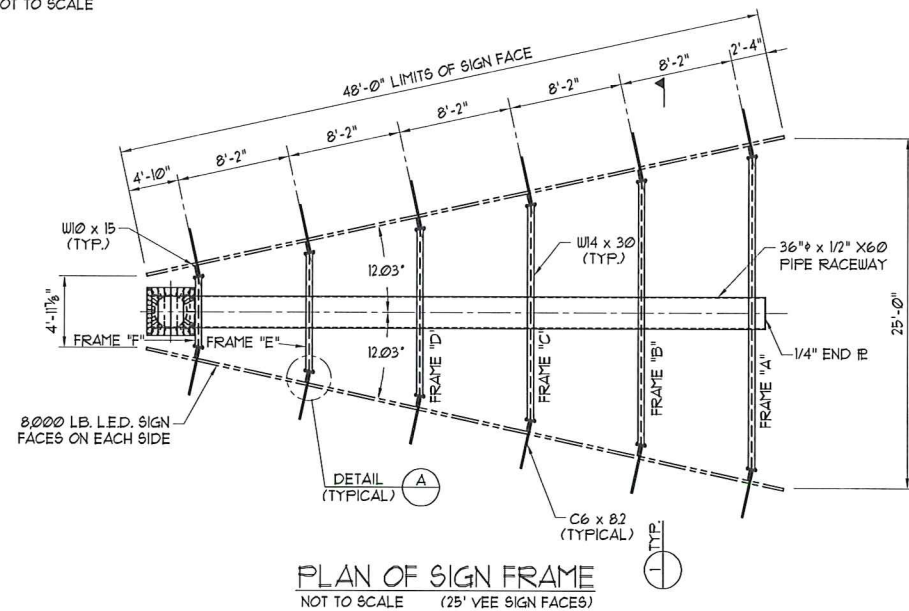


ELEVATION OF SIGN FRAME  
NOT TO SCALE

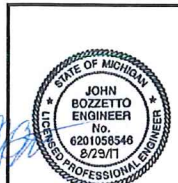


NOTES:

1. ALL BOLTS 3/4" A325 GALVANIZED UNO.
2. CONCRETE STANDARD WEIGHT 3000 P.S.I. @ 28 DAYS COMPRESSIVE STRENGTH.
3. DESIGN WIND LOAD 105 MPH, EXPOSURE 'C' PER 2012 INTERNATIONAL BUILDING CODE.
4. ALL STEEL SHALL BE A.S.T.M. A36 UNLESS NOTED. (WIDE FLANGES SHALL BE A392-50).
5. MAXIMUM SIGN FACE AREA 672 SQUARE FEET. MAXIMUM AFRON FACE AREA 144 SQUARE FEET.
6. ALL WELDS SHALL BE MADE BY AN AWS. CERTIFIED WELDER USING E70 FILLER MATERIAL.
7. MINIMUM LATERAL PASSIVE SOIL BEARING CAPACITY SHALL BE 400 P.S.F. PER FOOT OF DEPTH.

NOTE: THIS STRUCTURE IS FOR PERMITTING PURPOSES ONLY

B + P JOB NO. 11500071



OUTDOOR SPECIALIST, INC.  
Augusta, Georgia

SIGN LOCATION: ROCHESTER HILLS, MICHIGAN

scale	revisions	by	date
NOTED			
date	8/25/11		
drawn	TED		
ckd.	TFL		

SIGN FRAME #3392-061