

SYMBOLS

- 2 X 1.25" HDPE SDR-11 INNERDUCTS / TRACER WIRE
 - 0+00 STATION MARKER
 - STORAGE LOOP
 - PROPOSED ANCHOR/GUY
 - BOND TO GROUND
 - GROUNDING
 - Existing Handhole
 - Proposed Handhole
 - Existing Manhole
 - Proposed Manhole
 - Proposed Splice
 - Existing Splice
 - WATER VALVE/METER
 - GAS VALVE
 - HOUSE/BUILDING
 - Existing Power Pole
 - Foreign Pole (Tel)
 - Transmission Pole
- STREAM/RIVER
CITY/TWP LINE
ROAD C/L
R/R TRACKS
R/W LINE
FENCE
NEW AERIAL CABLE
NEW BURIED CABLE
WATER LINE
GAS LINE
POWER LINE
SAN. SEWER
STORM SEWER

CAUTION
FOREIGN UTILITY LOCATION ARE APPROXIMATE. CONTACT THE LOCAL ONE CALL AGENCY 72 HOURS PRIOR TO CONSTRUCTION FOR EXACT UTILITY LOCATIONS AT:

MISS DIG
1-800-482-7171

REVISIONS

REV. #	DESCRIPTION	BY	DATE
		XXX	XX/XX/XX

CABLE AND INNERDUCT DESCRIPTION

CABLE FIBER COUNT: 96 ct. FOC

INNERDUCT:

ARNOLD TRACHT DDS & DANIEL BRISKIE DDS, PC
1814 S. ROCHESTER RD.
ROCHESTER HILLS, MI

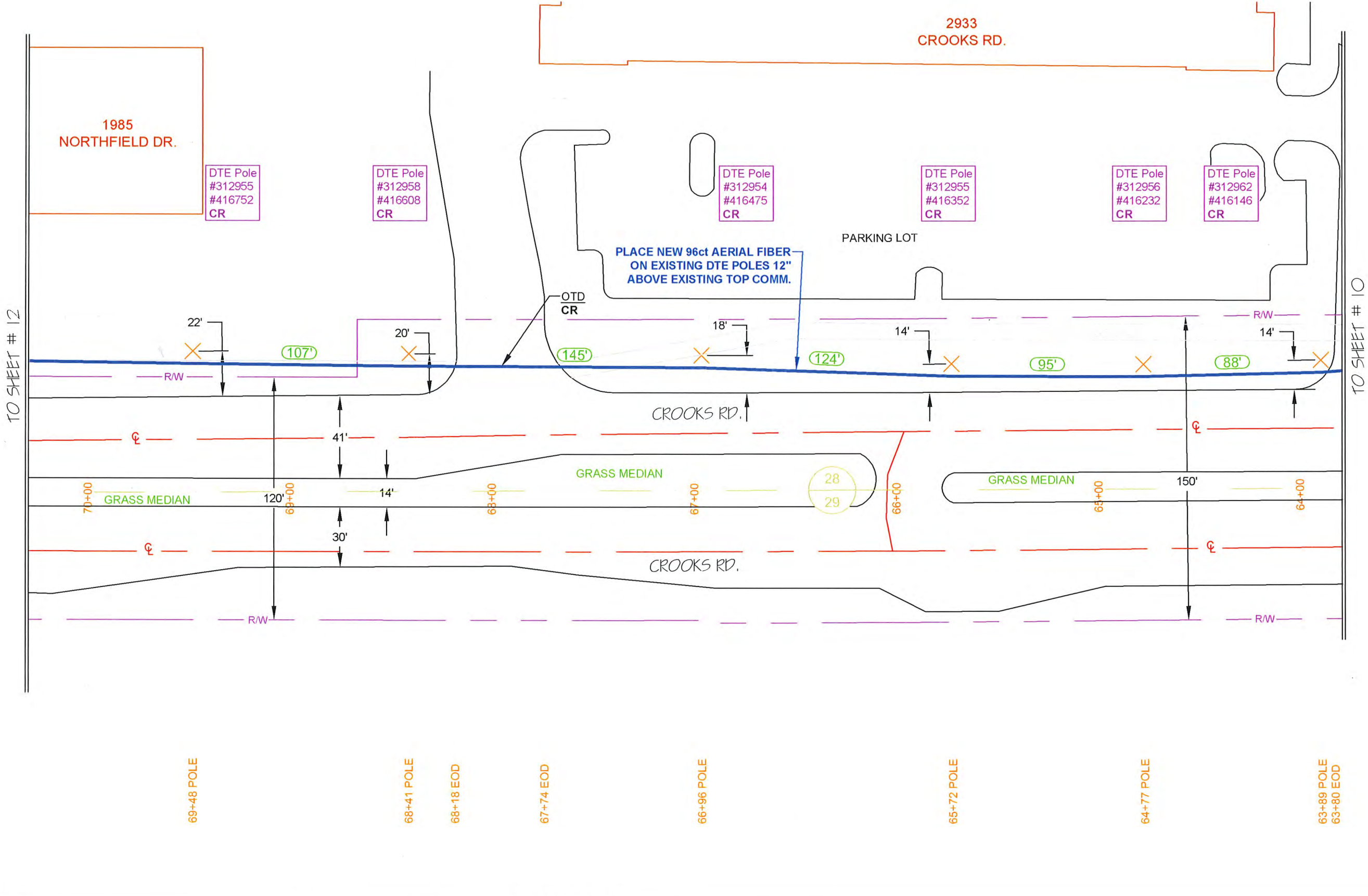
DRAWN BY : RAMTACH DATE: 07/05/18

AS-BUILTS BY : DATE:

ENGINEERED BY: RA DRAWING SCALE: 1" = 50'

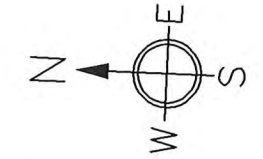
JOB NUMBER: 0012

DRAWING NUMBER : 11 OF 38



NOTES:

PROPRIETARY INFORMATION NOT FOR DISCLOSURE
This set of plans contains confidential or proprietary information, and the recipient must not disclose, copy, re-create, or distribute the plans or the information contained therein, either directly or indirectly, to other entities or individuals without written or express permission from Clear Rate Communications.



SYMBOLS

- 2 X 1.25" HDPE SDR-11 INNERDUCTS / TRACER WIRE
- 0+00 STATION MARKER
- STORAGE LOOP
- PROPOSED ANCHOR/GUY
- BOND TO GROUND
- GROUNDING
- Existing Handhole
- Proposed Handhole
- Existing Manhole
- Proposed Manhole
- Proposed Splice
- Existing Splice
- WATER VALVE/METER
- GAS VALVE
- HOUSE/BUILDING
- Existing Power Pole
- Foreign Pole (Tel)
- Transmission Pole
- STREAM/RIVER
- CITY/TWP LINE
- ROAD C/L
- R/R TRACKS
- R/W LINE
- FENCE
- NEW AERIAL CABLE
- NEW BURIED CABLE
- WATER LINE
- GAS LINE
- POWER LINE
- SAN. SEWER
- STORM SEWER

CAUTION
FOREIGN UTILITY LOCATION ARE APPROXIMATE. CONTACT THE LOCAL ONE CALL AGENCY 72 HOURS PRIOR TO CONSTRUCTION FOR EXACT UTILITY LOCATIONS AT:

MISS DIG
1-800-482-7171

REVISIONS

REV. #	DESCRIPTION	BY	DATE
#		XXX	XX/XX/XX

CABLE AND INNERDUCT DESCRIPTION
CABLE FIBER COUNT: 96 ct. FOC
INNERDUCT:

ARNOLD TRACHT DDS & DANIEL BRISKIE DDS, PC
1814 S. ROCHESTER RD.
ROCHESTER HILLS, MI

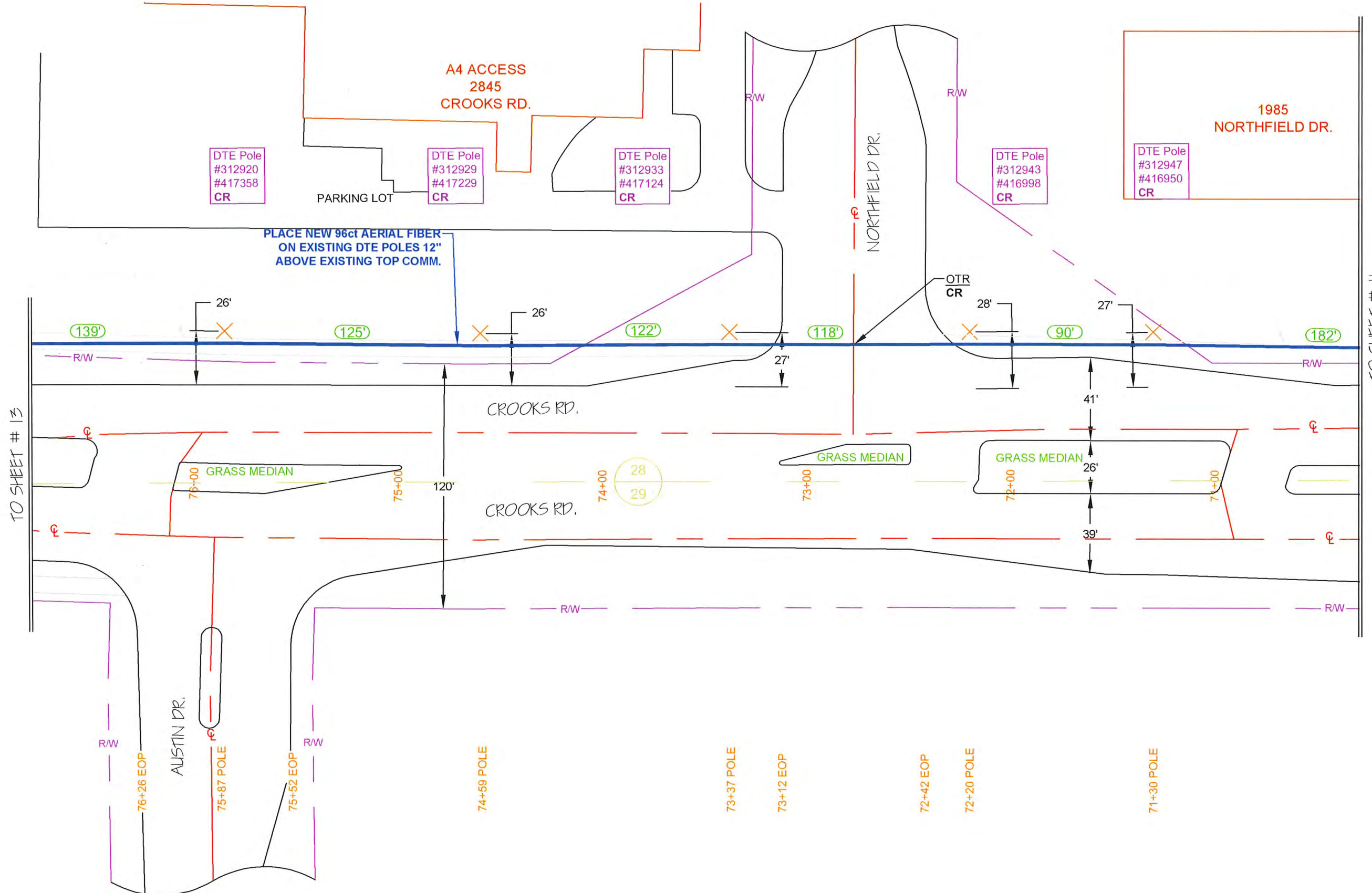
DRAWN BY : RAMTACH DATE: 07/05/18

AS-BUILTS BY : DATE:

ENGINEERED BY: RA DRAWING SCALE: 1" = 50'

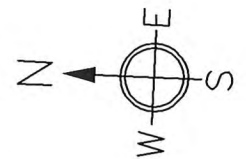
JOB NUMBER: 0012

DRAWING NUMBER : 12 OF 38



NOTES:

PROPRIETARY INFORMATION NOT FOR DISCLOSURE
This set of plans contains confidential or proprietary information, and the recipient must not disclose, copy, re-create, or distribute the plans or the information contained therein, either directly or indirectly, to other entities or individuals without written or express permission from Clear Rate Communications.



SYMBOLS

- 2 X 1.25" HDPE SDR-11 INNERDUCTS / TRACER WIRE
- 0+00 STATION MARKER
- STORAGE LOOP
- PROPOSED ANCHOR/GUY
- BOND TO GROUND
- GROUNDING
- Existing Handhole
- Proposed Handhole
- Existing Manhole
- Proposed Manhole
- Stream/River
- CITY/TWP LINE
- ROAD C/L
- R/R TRACKS
- R/W LINE
- FENCE
- NEW AERIAL CABLE
- NEW BURIED CABLE
- WATER LINE
- GAS LINE
- POWER LINE
- SAN. SEWER
- STORM SEWER
- Proposed Splice
- Existing Splice
- WATER VALVE/METER
- GAS VALVE
- HOUSE/BUILDING
- Existing Power Pole
- Foreign Pole (Tel)
- Transmission Pole

CAUTION
FOREIGN UTILITY LOCATION ARE APPROXIMATE. CONTACT THE LOCAL ONE CALL AGENCY 72 HOURS PRIOR TO CONSTRUCTION FOR EXACT UTILITY LOCATIONS AT:

MISS DIG
1-800-482-7171

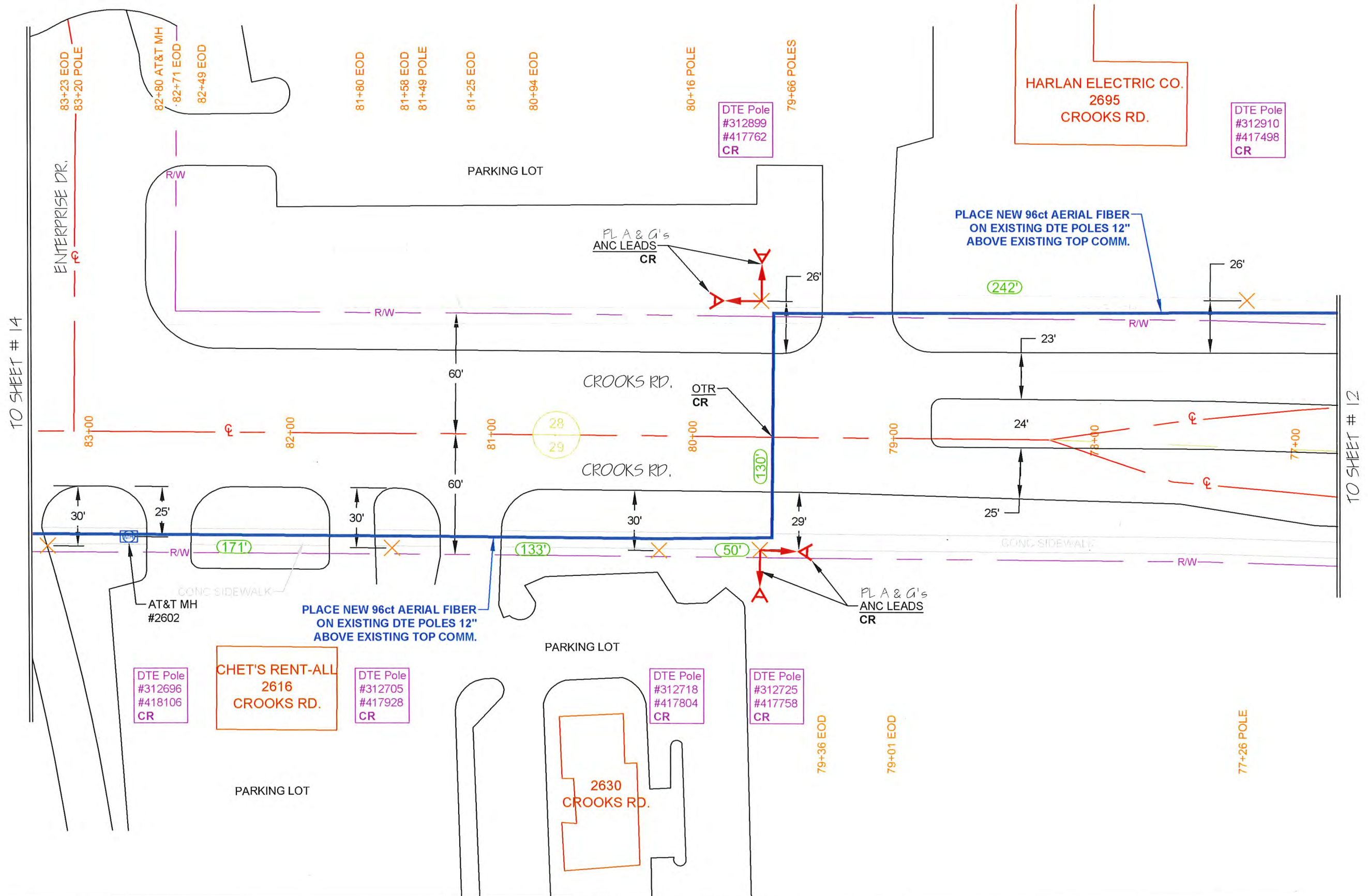
REVISIONS

REV. #	DESCRIPTION	BY	DATE
#		XXX	XX/XX/XX

CABLE AND INNERDUCT DESCRIPTION
CABLE FIBER COUNT: 96 ct. FOC
INNERDUCT:

ARNOLD TRACHT DDS & DANIEL BRISKIE DDS, PC
1814 S. ROCHESTER RD.
ROCHESTER HILLS, MI

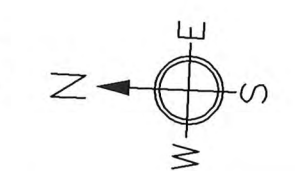
DRAWN BY : RAMTACH	DATE: 07/05/18
AS-BUILTS BY :	DATE:
ENGINEERED BY: RA	DRAWING SCALE: 1" = 50'
JOB NUMBER: 0012	
DRAWING NUMBER : 13 OF 38	



NOTES:

PROPRIETARY INFORMATION NOT FOR DISCLOSURE
This set of plans contains confidential or proprietary information, and the recipient must not disclose, copy, re-create, or distribute the plans or the information contained therein, either directly or indirectly, to other entities or individuals without written or express permission from Clear Rate Communications.

NOTE:
UTILITY LOCATIONS ARE APPROXIMATE ONLY. ALL UTILITIES MUST BE LOCATED PRIOR TO ANY EXCAVATION ACTIVITIES.
PLEASE CONTACT: MISSDIG 1-800-482-7171 72 HRS. PRIOR TO EXCAVATION



SYMBOLS

- 2 X 1.25" HDPE SDR-11 INNERDUCTS / TRACER WIRE
- 0+00 STATION MARKER
- STORAGE LOOP
- PROPOSED ANCHOR/GUY
- BOND TO GROUND
- GROUND
- Existing Handhole
- Proposed Handhole
- Existing Manhole
- Proposed Manhole
- Proposed Splice
- Existing Splice
- WATER VALVE/METER
- GAS VALVE
- HOUSE/BUILDING
- Existing Power Pole
- Foreign Pole (Tel)
- Transmission Pole
- STREAM/RIVER
- CITY/TWP LINE
- ROAD C/L
- R/R TRACKS
- R/W LINE
- FENCE
- NEW AERIAL CABLE
- NEW BURIED CABLE
- WATER LINE
- GAS LINE
- POWER LINE
- SAN. SEWER
- STORM SEWER

CAUTION
FOREIGN UTILITY LOCATION ARE APPROXIMATE. CONTACT THE LOCAL ONE CALL AGENCY 72 HOURS PRIOR TO CONSTRUCTION FOR EXACT UTILITY LOCATIONS AT:

MISS DIG
1-800-482-7171

REVISIONS

REV. #	DESCRIPTION	BY	DATE
#		XXX	XX/XX/XX

CABLE AND INNERDUCT DESCRIPTION

CABLE FIBER COUNT: 96 ct. FOC
INNERDUCT: PL. (2) 1.25" SDR-11 HDPE W/TRACER WIRE

ARNOLD TRACHT DDS & DANIEL BRISKIE DDS, PC
1814 S. ROCHESTER RD.
ROCHESTER HILLS, MI

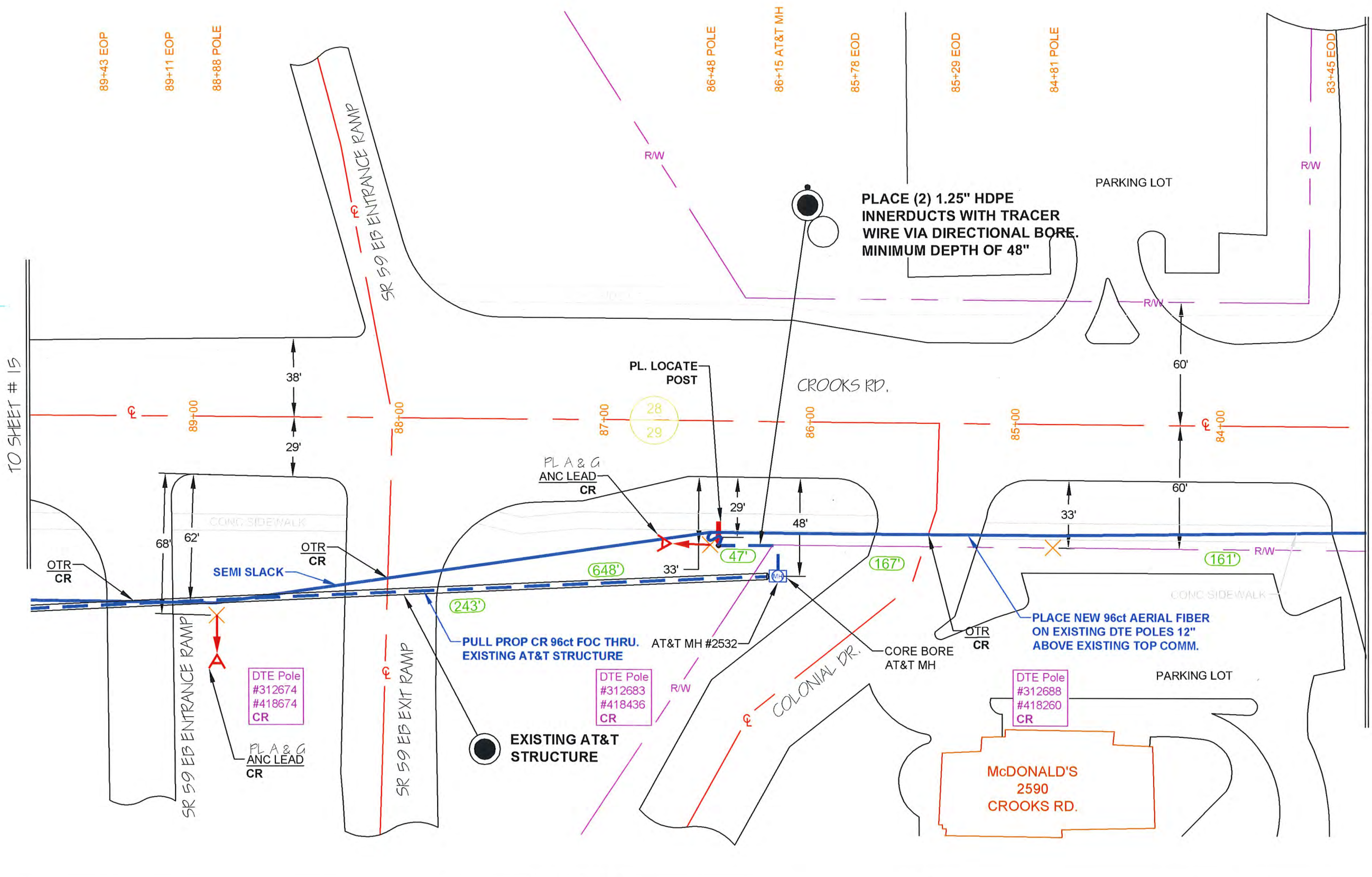
DRAWN BY: RAMTUCH DATE: 07/05/18

AS-BUILTS BY: DATE:

ENGINEERED BY: RA DRAWING SCALE: 1" = 50'

JOB NUMBER: 0012

DRAWING NUMBER: 14 OF 38

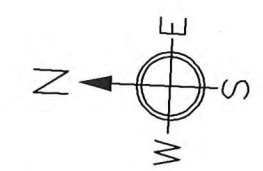


NOTES:

PROPRIETARY INFORMATION NOT FOR DISCLOSURE
This set of plans contains confidential or proprietary information, and the recipient must not disclose, copy, re-create, or distribute the plans or the information contained therein, either directly or indirectly, to other entities or individuals without written or express permission from Clear Rate Communications.

NOTE:
UTILITY LOCATIONS ARE APPROXIMATE ONLY. ALL UTILITIES MUST BE LOCATED PRIOR TO ANY EXCAVATION ACTIVITIES.

PLEASE CONTACT: MISSDIG 1-800-482-7171 72 HRS. PRIOR TO EXCAVATION



SYMBOLS

- 2 X 1.25" HDPE SDR-11 INNERDUCTS / TRACER WIRE
- 0+00 STATION MARKER
- STORAGE LOOP
- PROPOSED ANCHOR/GUY
- BOND TO GROUND
- GROUNDED
- Existing Handhole
- Proposed Handhole
- Existing Manhole
- Proposed Manhole
- Stream/River
- CITY/TWP LINE
- ROAD C/L
- R/R TRACKS
- R/W LINE
- FENCE
- NEW AERIAL CABLE
- NEW BURIED CABLE
- WATER LINE
- GAS LINE
- POWER LINE
- SAN. SEWER
- STORM SEWER
- Proposed Splice
- Existing Splice
- WATER VALVE/METER
- GAS VALVE
- HOUSE/BUILDING
- Existing Power Pole
- Foreign Pole (Tel)
- Transmission Pole

CAUTION
FOREIGN UTILITY LOCATION ARE APPROXIMATE. CONTACT THE LOCAL ONE CALL AGENCY 72 HOURS PRIOR TO CONSTRUCTION FOR EXACT UTILITY LOCATIONS AT:

MISS DIG
1-800-482-7171

REVISIONS

REV. #	DESCRIPTION	BY	DATE
#		XXX	XX/XX/XX

CABLE AND INNERDUCT DESCRIPTION

CABLE FIBER COUNT: 96 ct. FOC
INNERDUCT: PL. (2) 1.25" SDR-11 HDPE W/TRACER WIRE

ARNOLD TRACHT DDS & DANIEL BRISKIE DDS, PC
1814 S. ROCHESTER RD.
ROCHESTER HILLS, MI

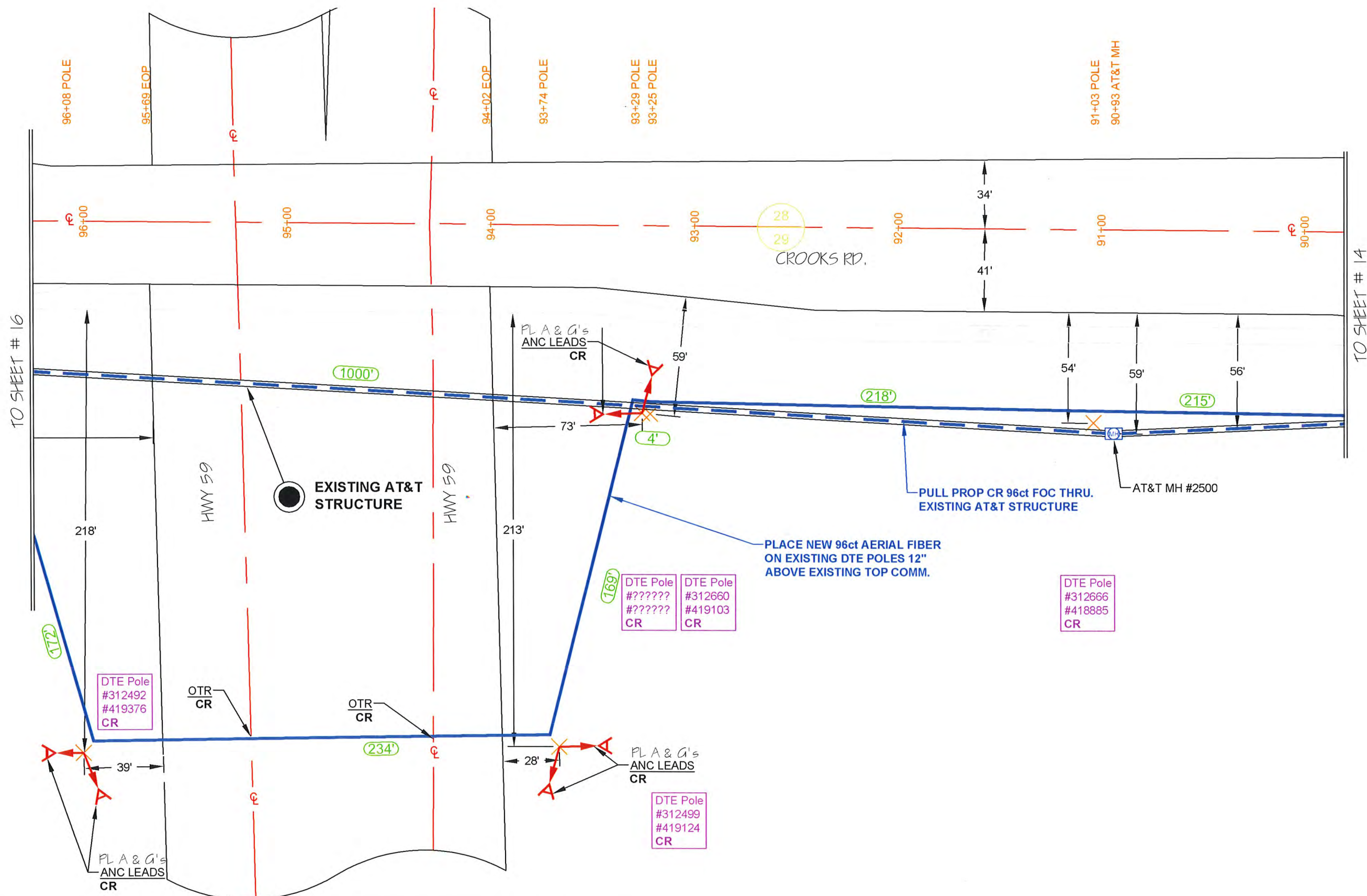
DRAWN BY: RAMTACH DATE: 07/05/18

AS-BUILTS BY: DATE:

ENGINEERED BY: RA DRAWING SCALE: 1" = 50'

JOB NUMBER: 0012

DRAWING NUMBER: 15 OF 38



TO SHEET # 16

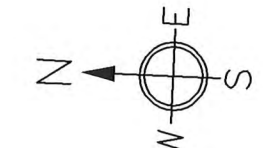
TO SHEET # 14

NOTES:

PROPRIETARY INFORMATION NOT FOR DISCLOSURE
This set of plans contains confidential or proprietary information, and the recipient must not disclose, copy, re-create, or distribute the plans or the information contained therein, either directly or indirectly, to other entities or individuals without written or express permission from Clear Rate Communications.

NOTE:
UTILITY LOCATIONS ARE APPROXIMATE ONLY. ALL UTILITIES MUST BE LOCATED PRIOR TO ANY EXCAVATION ACTIVITIES.

PLEASE CONTACT: MISSDIG 1-800-482-7171 72 HRS. PRIOR TO EXCAVATION



COUNTY: OAKLAND TOWNSHIP: AVON

CITY: ROCHESTER HILLS SECTION: 29

TOWN: 3N RANGE: 11E

SYMBOLS

- 2 X 1.25" HDPE SDR-11 INNERDUCTS / TRACER WIRE
- 0+00 STATION MARKER
- STORAGE LOOP
- PROPOSED ANCHOR/GUY
- BOND TO GROUND
- GROUND
- Existing Handhole
- Proposed Handhole
- Existing Manhole
- Proposed Manhole
- Proposed Splice
- Existing Splice
- WATER VALVE/METER
- GAS VALVE
- HOUSE/BUILDING
- Existing Power Pole
- Foreign Pole (Tel)
- Transmission Pole
- STREAM/RIVER
- CITY/TWP LINE
- ROAD C/L
- R/R TRACKS
- R/W LINE
- FENCE
- NEW AERIAL CABLE
- NEW BURIED CABLE
- WATER LINE
- GAS LINE
- POWER LINE
- SAN. SEWER
- STORM SEWER

CAUTION

FOREIGN UTILITY LOCATION ARE APPROXIMATE. CONTACT THE LOCAL ONE CALL AGENCY 72 HOURS PRIOR TO CONSTRUCTION FOR EXACT UTILITY LOCATIONS AT:

MISS DIG
1-800-482-7171

REVISIONS

REV. #	DESCRIPTION	BY	DATE
#		XXX	XX/XX/XX

CABLE AND INNERDUCT DESCRIPTION

CABLE FIBER COUNT: 96 cl. FOC
INNERDUCT: PL. (2) 1.25" SDR-11 HDPE W/TRACER WIRE

ARNOLD TRACHT DDS & DANIEL BRISKIE DDS, PC
1814 S. ROCHESTER RD.
ROCHESTER HILLS, MI

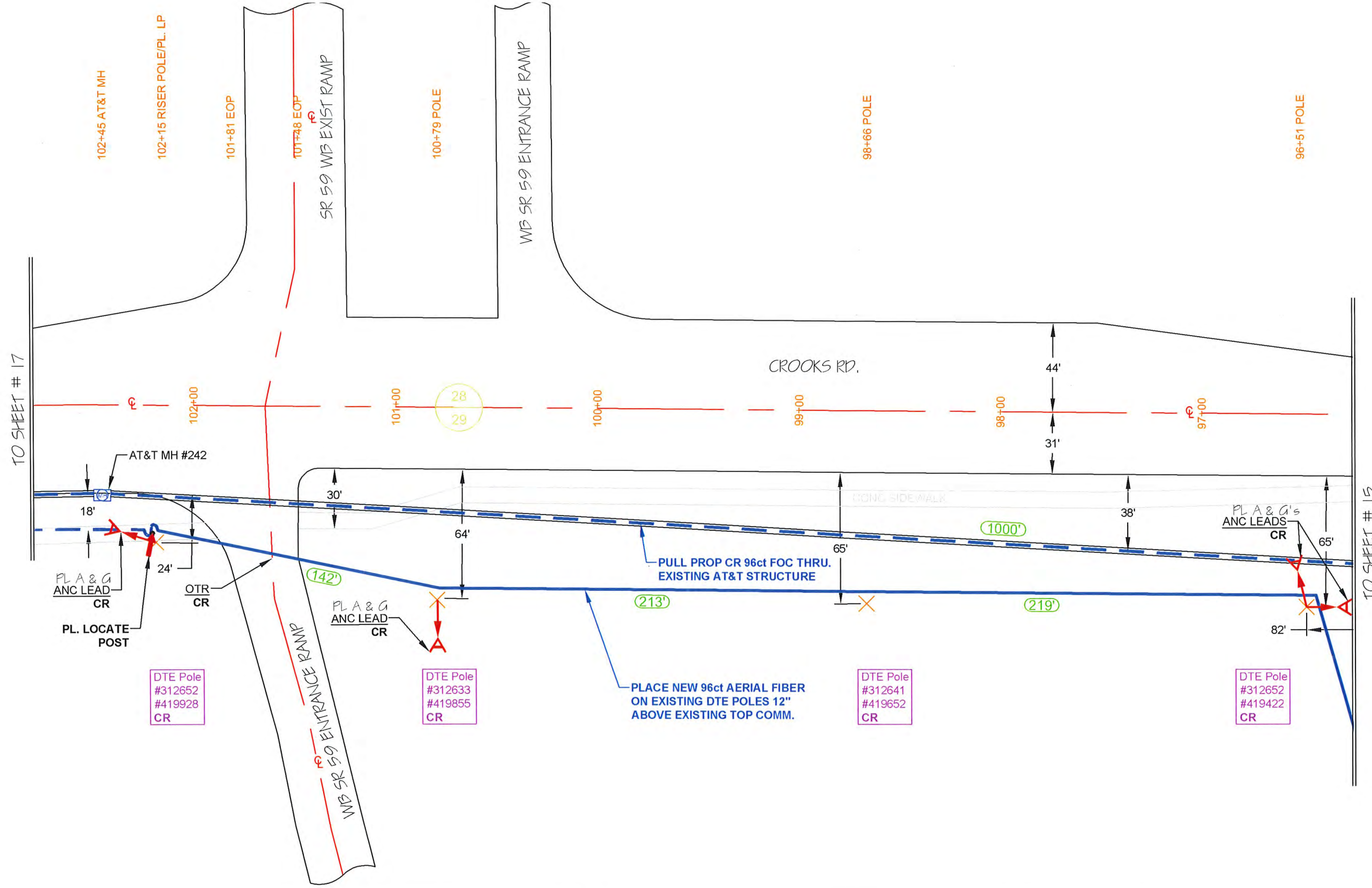
DRAWN BY: RAMT+CH DATE: 07/05/18

AS-BUILTS BY: DATE:

ENGINEERED BY: RA DRAWING SCALE: 1" = 50'

JOB NUMBER: 0012

DRAWING NUMBER: 16 OF 38

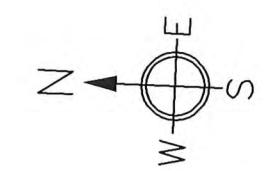


NOTES:

PROPRIETARY INFORMATION NOT FOR DISCLOSURE
This set of plans contains confidential or proprietary information, and the recipient must not disclose, copy, re-create, or distribute the plans or the information contained therein, either directly or indirectly, to other entities or individuals without written or express permission from Clear Rate Communications.

NOTE:
UTILITY LOCATIONS ARE APPROXIMATE ONLY. ALL UTILITIES MUST BE LOCATED PRIOR TO ANY EXCAVATION ACTIVITIES.

PLEASE CONTACT: MISSDIG 1-800-482-7171 72 HRS. PRIOR TO EXCAVATION



COUNTY: OAKLAND TOWNSHIP: AVON

CITY: ROCHESTER HILLS SECTION: 29

TOWN: 3N RANGE: 11E

SYMBOLS

- 2 X 1.25" HDPE SDR-11 INNERDUCTS / TRACER WIRE
- 0+00 STATION MARKER
- STORAGE LOOP
- PROPOSED ANCHOR/GUY
- BOND TO GROUND
- GROUNDED
- Existing Handhole
- Proposed Handhole
- Existing Manhole
- Proposed Manhole
- Proposed Splice
- Existing Splice
- WATER VALVE/METER
- GAS VALVE
- HOUSE/BUILDING
- Existing Power Pole
- Foreign Pole (Tel)
- Transmission Pole
- STREAM/RIVER
- CITY/TWP LINE
- ROAD C/L
- R/R TRACKS
- R/W LINE
- FENCE
- NEW AERIAL CABLE
- NEW BURIED CABLE
- WATER LINE
- GAS LINE
- POWER LINE
- SAN. SEWER
- STORM SEWER

CAUTION
FOREIGN UTILITY LOCATION ARE APPROXIMATE. CONTACT THE LOCAL ONE CALL AGENCY 72 HOURS PRIOR TO CONSTRUCTION FOR EXACT UTILITY LOCATIONS AT:

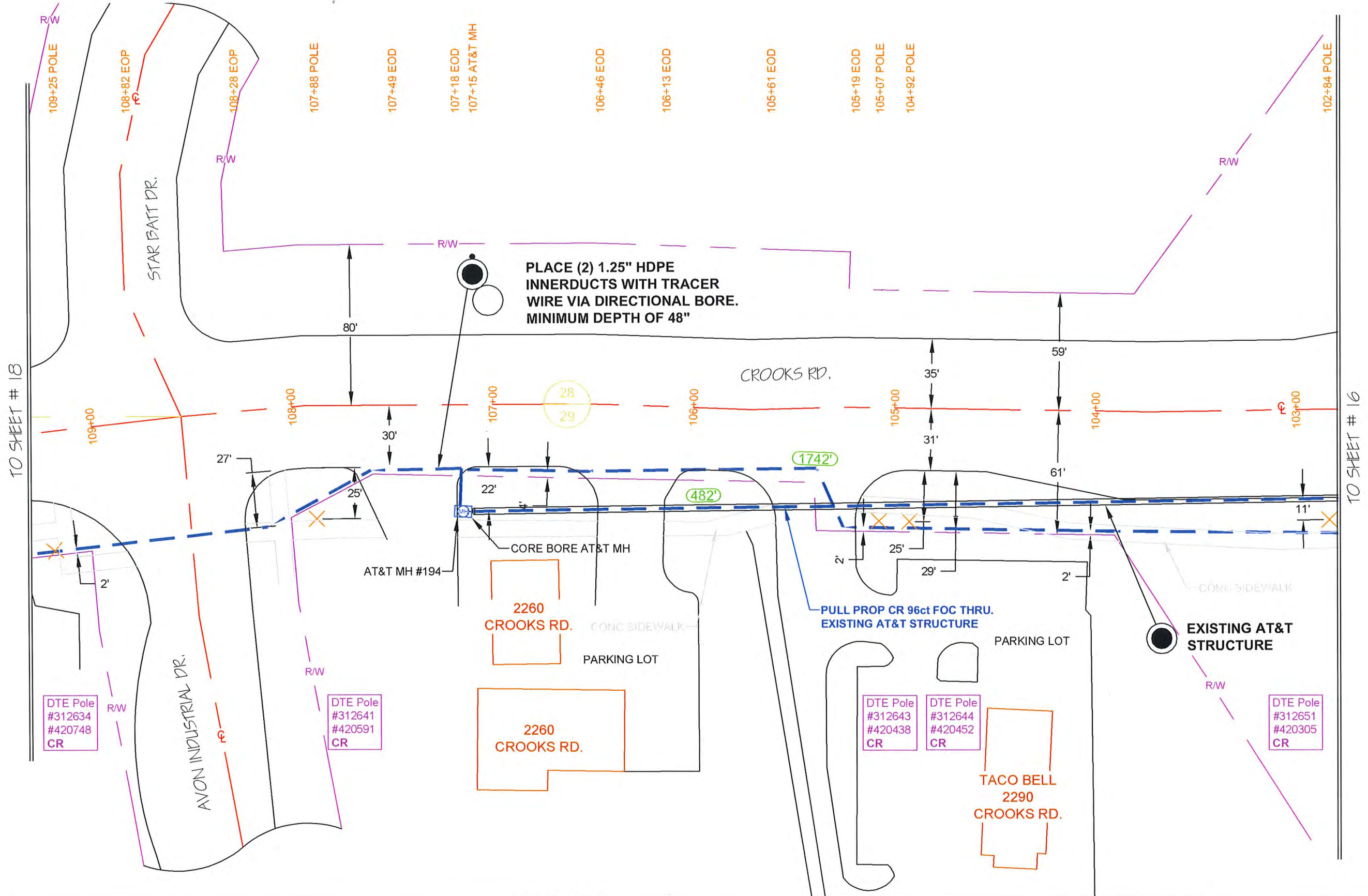
MISS DIG
1-800-482-7171

REVISIONS

REV. #	DESCRIPTION	BY	DATE
#		XXX	XX/XX/XX

CABLE AND INNERDUCT DESCRIPTION
CABLE FIBER COUNT: 96 cl. FOC
INNERDUCT: PL. (2) 1.25" SDR-11 HDPE W/TRACER WIRE

DRAWN BY :	RAMTWH	DATE:	07/05/18
AS-BUILTS BY :		DATE:	
ENGINEERED BY:	RA	DRAWING SCALE:	1" = 50'
JOB NUMBER:	0012		
DRAWING NUMBER :	17 OF 38		

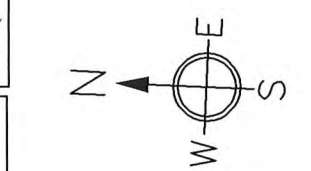


NOTES:

PROPRIETARY INFORMATION NOT FOR DISCLOSURE
This set of plans contains confidential or proprietary information, and the recipient must not disclose, copy, re-create, or distribute the plans or the information contained therein, either directly or indirectly, to other entities or individuals without written or express permission from Clear Rate Communications.

NOTE:
UTILITY LOCATIONS ARE APPROXIMATE ONLY. ALL UTILITIES MUST BE LOCATED PRIOR TO ANY EXCAVATION ACTIVITIES.

PLEASE CONTACT: MISSDIG 1-800-482-7171
72 HRS. PRIOR TO EXCAVATION



SYMBOLS

- 2 X 1.25" HDPE SDR-11 INNERDUCTS / TRACER WIRE
- 0+00 STATION MARKER
- STORAGE LOOP
- PROPOSED ANCHOR/GUY
- BOND TO GROUND
- GROUNDING
- Existing Handhole
- Proposed Handhole
- Existing Manhole
- Proposed Manhole
- Proposed Splice
- Existing Splice
- WATER VALVE/METER
- GAS VALVE
- HOUSE/BUILDING
- Existing Power Pole
- Foreign Pole (Tel)
- Transmission Pole
- STREAM/RIVER
- CITY/TWP LINE
- ROAD C/L
- R/R TRACKS
- R/W LINE
- FENCE
- NEW AERIAL CABLE
- NEW BURIED CABLE
- WATER LINE
- GAS LINE
- POWER LINE
- SAN. SEWER
- STORM SEWER

CAUTION

FOREIGN UTILITY LOCATION ARE APPROXIMATE. CONTACT THE LOCAL ONE CALL AGENCY 72 HOURS PRIOR TO CONSTRUCTION FOR EXACT UTILITY LOCATIONS AT:

MISS DIG
1-800-482-7171

REVISIONS

REV. #	DESCRIPTION	BY	DATE
#		XXX	XX/XX/XX

CABLE AND INNERDUCT DESCRIPTION

CABLE FIBER COUNT: 96 ct. FOC
INNERDUCT: PL. (2) 1.25" SDR-11 HDPE W/TRACER WIRE

ARNOLD TRACHT DDS & DANIEL BRISKIE DDS, PC
1814 S. ROCHESTER RD.
ROCHESTER HILLS, MI

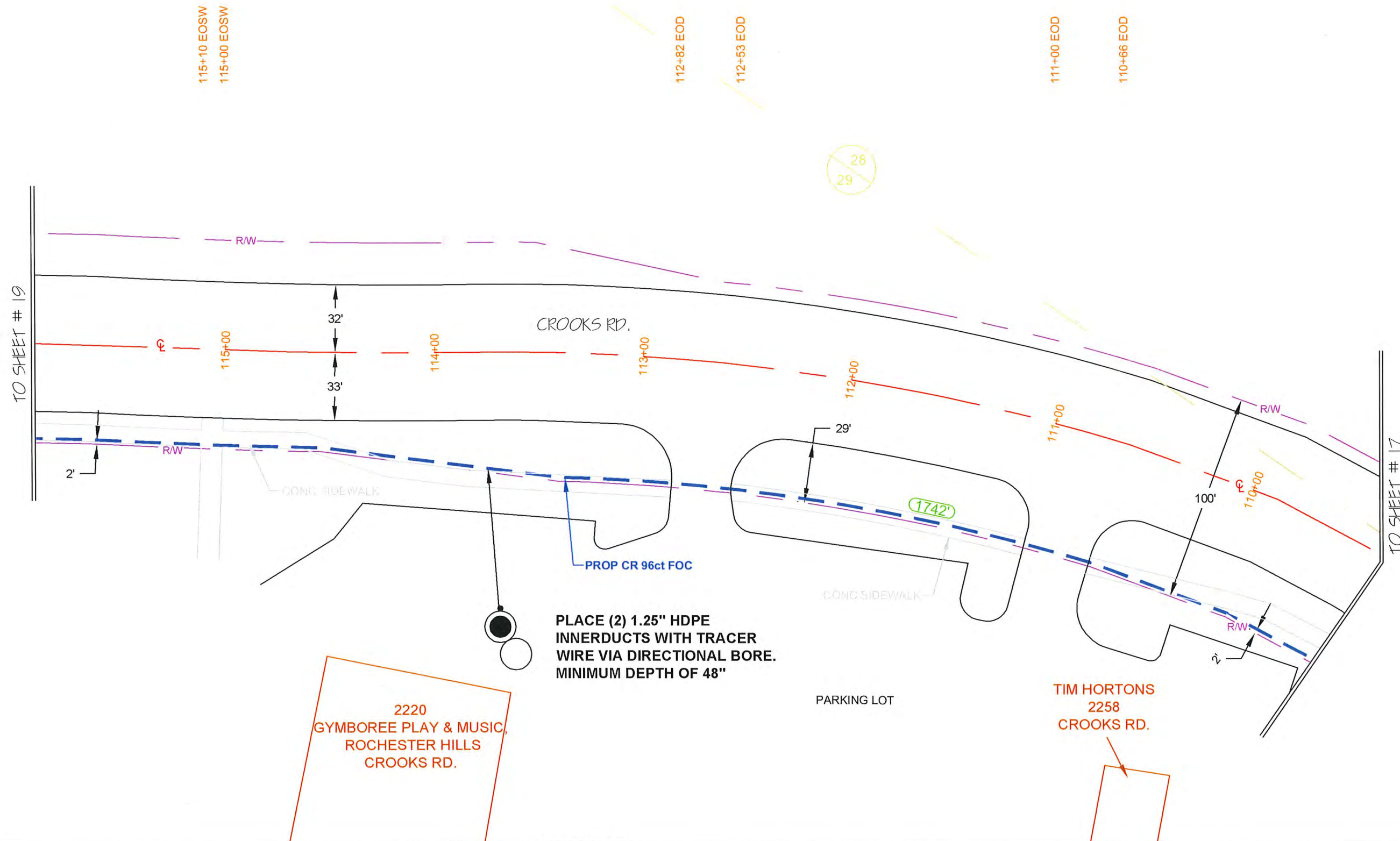
DRAWN BY : RAMT+CH DATE: 07/05/18

AS-BUILTS BY : DATE:

ENGINEERED BY: RA DRAWING SCALE: 1" = 50'

JOB NUMBER: 0012

DRAWING NUMBER : 18 OF 38

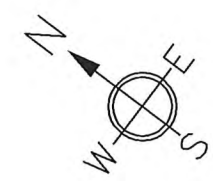


NOTES:

PROPRIETARY INFORMATION NOT FOR DISCLOSURE
This set of plans contains confidential or proprietary information, and the recipient must not disclose, copy, re-create, or distribute the plans or the information contained therein, either directly or indirectly, to other entities or individuals without written or express permission from Clear Rate Communications.

NOTE:
UTILITY LOCATIONS ARE APPROXIMATE ONLY. ALL UTILITIES MUST BE LOCATED PRIOR TO ANY EXCAVATION ACTIVITIES.

PLEASE CONTACT: MISSDIG 1-800-482-7171
72 HRS. PRIOR TO EXCAVATION



SYMBOLS

- 2 X 1.25" HDPE SDR-11 INNERDUCTS / TRACER WIRE
- 0+00 STATION MARKER
- STORAGE LOOP
- PROPOSED ANCHOR/GUY
- BOND TO GROUND
- EXISTING HANDHOLE
- PROPOSED HANDHOLE
- EXISTING MANHOLE
- PROPOSED MANHOLE
- STREAM/RIVER
- CITY/TWP LINE
- ROAD C/L
- R/R TRACKS
- R/W LINE
- FENCE
- NEW AERIAL CABLE
- NEW BURIED CABLE
- WATER LINE
- GAS LINE
- POWER LINE
- SAN. SEWER
- STORM SEWER
- Proposed Splice
- Existing Splice
- Water Valve/Meter
- Gas Valve
- House/Building
- Existing Power Pole
- Foreign Pole (Tel)
- Transmission Pole

CAUTION
FOREIGN UTILITY LOCATION ARE APPROXIMATE. CONTACT THE LOCAL ONE CALL AGENCY 72 HOURS PRIOR TO CONSTRUCTION FOR EXACT UTILITY LOCATIONS AT:

MISS DIG
1-800-482-7171

REVISIONS

REV. #	DESCRIPTION	BY	DATE

CABLE AND INNERDUCT DESCRIPTION

CABLE FIBER COUNT: 96 ct. FOC
INNERDUCT: PL. (2) 1.25" SDR-11 HDPE W/TRACER WIRE

ARNOLD TRACHT DDS & DANIEL BRISKIE DDS, PC
1814 S. ROCHESTER RD.
ROCHESTER HILLS, MI

DRAWN BY: RAMTUCH DATE: 07/05/18

AS-BUILTS BY: DATE:

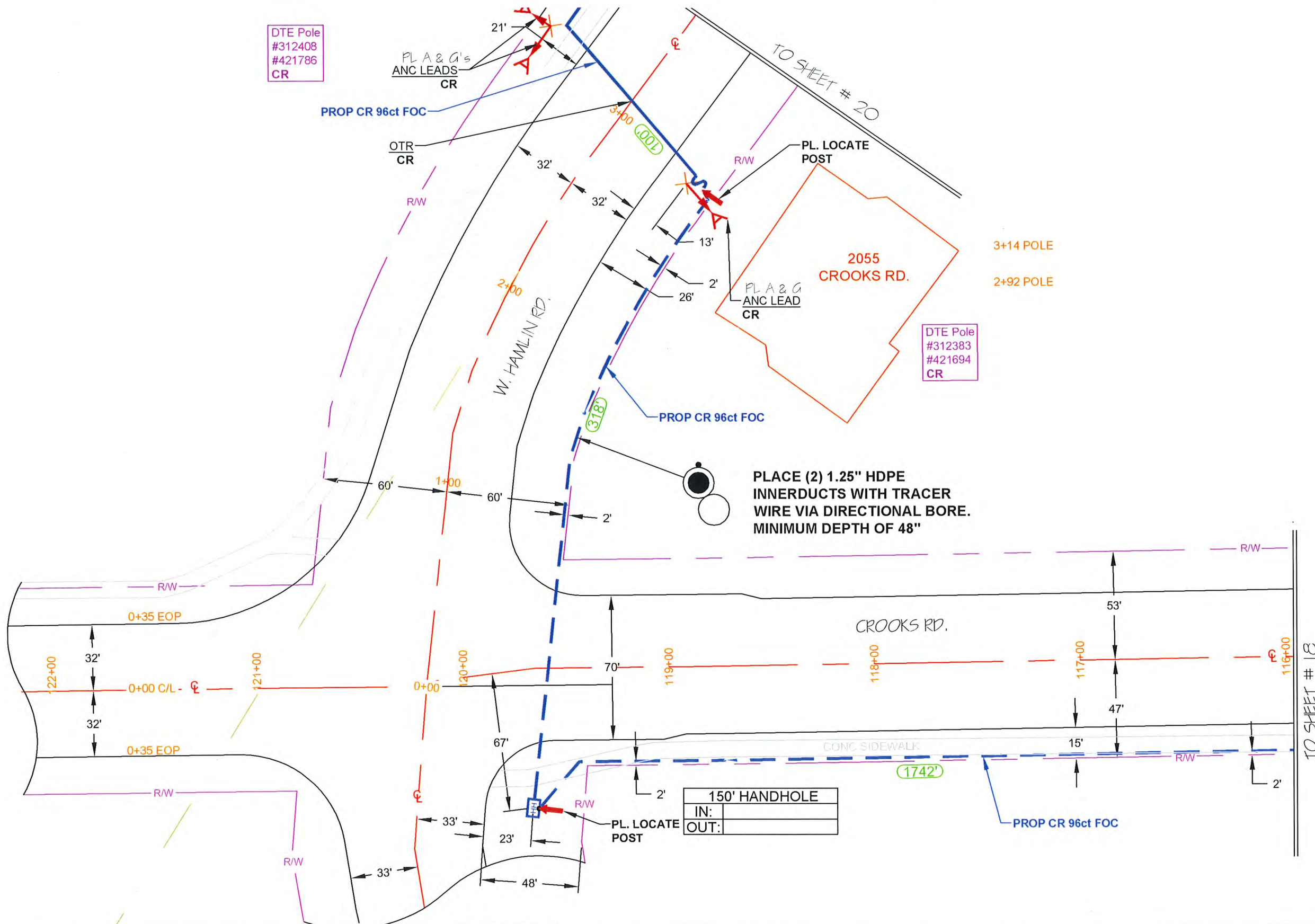
ENGINEERED BY: RA DRAWING SCALE: 1" = 50'

JOB NUMBER: 0012

DRAWING NUMBER: 19 OF 38

DTE Pole
#312408
#421786
CR

DTE Pole
#312383
#421694
CR



PLACE (2) 1.25" HDPE INNERDUCTS WITH TRACER WIRE VIA DIRECTIONAL BORE. MINIMUM DEPTH OF 48"

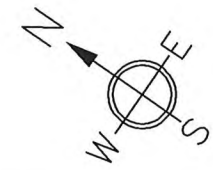
150' HANDHOLE	
IN:	
OUT:	

NOTES:

PROPRIETARY INFORMATION NOT FOR DISCLOSURE
This set of plans contains confidential or proprietary information, and the recipient must not disclose, copy, re-create, or distribute the plans or the information contained therein, either directly or indirectly, to other entities or individuals without written or express permission from Clear Rate Communications.

NOTE:
UTILITY LOCATIONS ARE APPROXIMATE ONLY. ALL UTILITIES MUST BE LOCATED PRIOR TO ANY EXCAVATION ACTIVITIES.

PLEASE CONTACT: MISSDIG 1-800-482-7171 72 HRS. PRIOR TO EXCAVATION



SYMBOLS

- 2 X 1.25" HDPE SDR-11 INNERDUCTS / TRACER WIRE
- 0+00 STATION MARKER
- STORAGE LOOP
- PROPOSED ANCHOR/GUY
- BOND TO GROUND
- GROUNDING
- Existing Handhole
- Proposed Handhole
- Existing Manhole
- Proposed Manhole
- Proposed Splice
- Existing Splice
- WATER VALVE/METER
- GAS VALVE
- HOUSE/BUILDING
- Existing Power Pole
- Foreign Pole (Tel)
- Transmission Pole
- STREAM/RIVER
- CITY/TWP LINE
- ROAD C/L
- R/R TRACKS
- R/W LINE
- FENCE
- NEW AERIAL CABLE
- NEW BURIED CABLE
- WATER LINE
- GAS LINE
- POWER LINE
- SAN. SEWER
- STORM SEWER

CAUTION
FOREIGN UTILITY LOCATION ARE APPROXIMATE. CONTACT THE LOCAL ONE CALL AGENCY 72 HOURS PRIOR TO CONSTRUCTION FOR EXACT UTILITY LOCATIONS AT:

MISS DIG
1-800-482-7171

REVISIONS

REV. #	DESCRIPTION	BY	DATE
#		XXX	XX/XX/XX

CABLE AND INNERDUCT DESCRIPTION

CABLE FIBER COUNT: 96 ct. FOC

INNERDUCT:

ARNOLD TRACHT DDS & DANIEL BRISKIE DDS, PC
1814 S. ROCHESTER RD.
ROCHESTER HILLS, MI

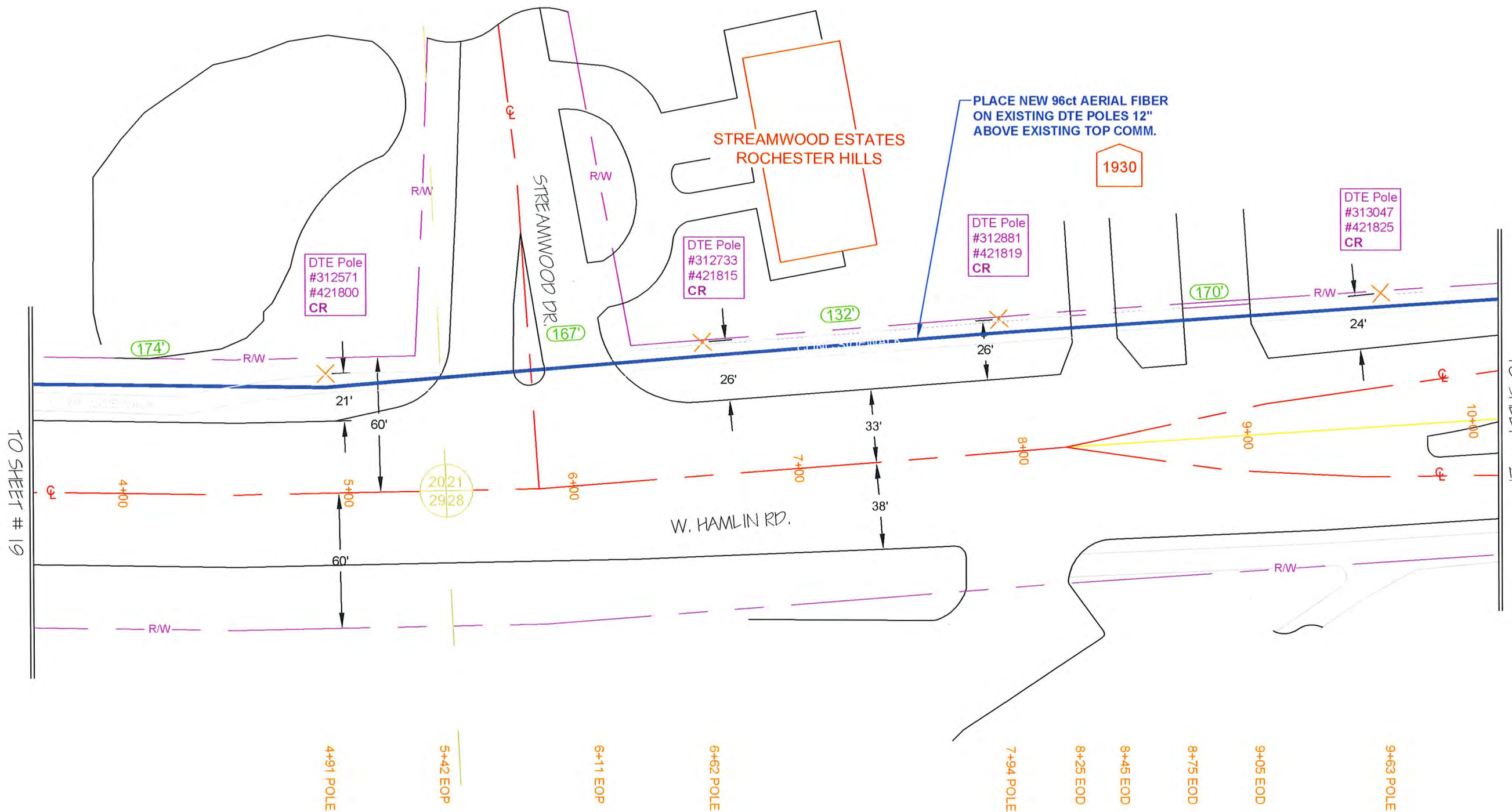
DRAWN BY : RAMTACH DATE: 07/05/18

AS-BUILTS BY : DATE:

ENGINEERED BY: RA DRAWING SCALE: 1" = 50'

JOB NUMBER: 0012

DRAWING NUMBER : 20 OF 38

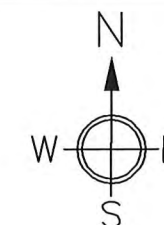


TO SHEET # 19

TO SHEET # 21

NOTES:

PROPRIETARY INFORMATION NOT FOR DISCLOSURE
This set of plans contains confidential or proprietary information, and the recipient must not disclose, copy, re-create, or distribute the plans or the information contained therein, either directly or indirectly, to other entities or individuals without written or express permission from Clear Rate Communications.



SYMBOLS

- 2 X 1.25" HDPE SDR-11 INNERDUCTS / TRACER WIRE
- 0+00 STATION MARKER
- STORAGE LOOP
- PROPOSED ANCHOR/GUY
- BOND TO GROUND
- GROUNDING
- Existing Handhole
- Proposed Handhole
- Existing Manhole
- Proposed Manhole
- STREAM/RIVER
- CITY/TWP LINE
- ROAD C/L
- R/R TRACKS
- R/W LINE
- FENCE
- NEW AERIAL CABLE
- NEW BURIED CABLE
- WATER LINE
- GAS LINE
- POWER LINE
- SAN. SEWER
- STORM SEWER
- Proposed Splice
- Existing Splice
- WATER VALVE/METER
- GAS VALVE
- HOUSE/BUILDING
- Existing Power Pole
- Foreign Pole (Tel)
- Transmission Pole

CAUTION
FOREIGN UTILITY LOCATION ARE APPROXIMATE. CONTACT THE LOCAL ONE CALL AGENCY 72 HOURS PRIOR TO CONSTRUCTION FOR EXACT UTILITY LOCATIONS AT:

MISS DIG
1-800-482-7171

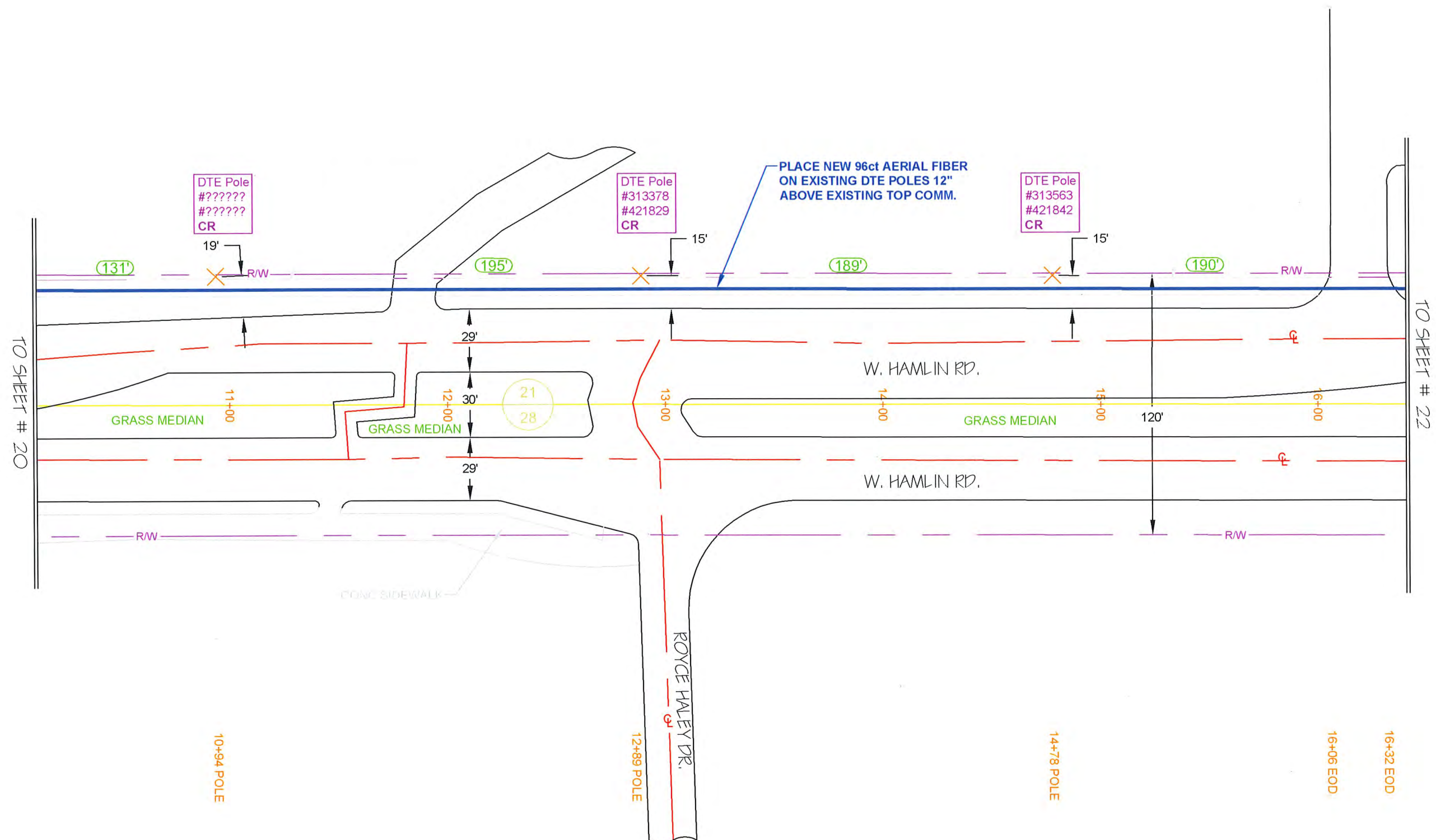
REVISIONS

REV. #	DESCRIPTION	BY	DATE

CABLE AND INNERDUCT DESCRIPTION
CABLE FIBER COUNT: 96 ct. FOC
INNERDUCT:

ARNOLD TRACHT DDS & DANIEL BRISKIE DDS, PC
1814 S. ROCHESTER RD.
ROCHESTER HILLS, MI

DRAWN BY :	RAMT=CH	DATE:	07/05/18
AS-BUILTS BY :		DATE:	
ENGINEERED BY:	RA	DRAWING SCALE:	1" = 50'
JOB NUMBER:	0012		
DRAWING NUMBER :	21 OF 38		



NOTES:

PROPRIETARY INFORMATION NOT FOR DISCLOSURE
This set of plans contains confidential or proprietary information, and the recipient must not disclose, copy, re-create, or distribute the plans or the information contained therein, either directly or indirectly, to other entities or individuals without written or express permission from Clear Rate Communications.



SYMBOLS

- 2 X 1.25" HDPE SDR-11 INNERDUCTS / TRACER WIRE
- 0+00 STATION MARKER
- STORAGE LOOP
- PROPOSED ANCHOR/GUY
- BOND TO GROUND
- GROUNDING
- Existing Handhole
- Proposed Handhole
- Existing Manhole
- Proposed Manhole
- Proposed Splice
- Existing Splice
- Water Valve/Meter
- Gas Valve
- House/Building
- Existing Power Pole
- Foreign Pole (Tel)
- Transmission Pole
- Stream/River
- City/Twp Line
- Road C/L
- R/R Tracks
- R/W Line
- Fence
- New Aerial Cable
- New Buried Cable
- Water Line
- Gas Line
- Power Line
- San. Sewer
- Storm Sewer

CAUTION
FOREIGN UTILITY LOCATION ARE APPROXIMATE. CONTACT THE LOCAL ONE CALL AGENCY 72 HOURS PRIOR TO CONSTRUCTION FOR EXACT UTILITY LOCATIONS AT:

MISS DIG
1-800-482-7171

REVISIONS

REV. #	DESCRIPTION	BY	DATE

CABLE AND INNERDUCT DESCRIPTION

CABLE FIBER COUNT: 96 ct. FOC
INNERDUCT: PL. (2) 1.25" SDR-11 HDPE W/TRACER WIRE

ARNOLD TRACHT DDS & DANIEL BRISKIE DDS, PC
1814 S. ROCHESTER RD.
ROCHESTER HILLS, MI

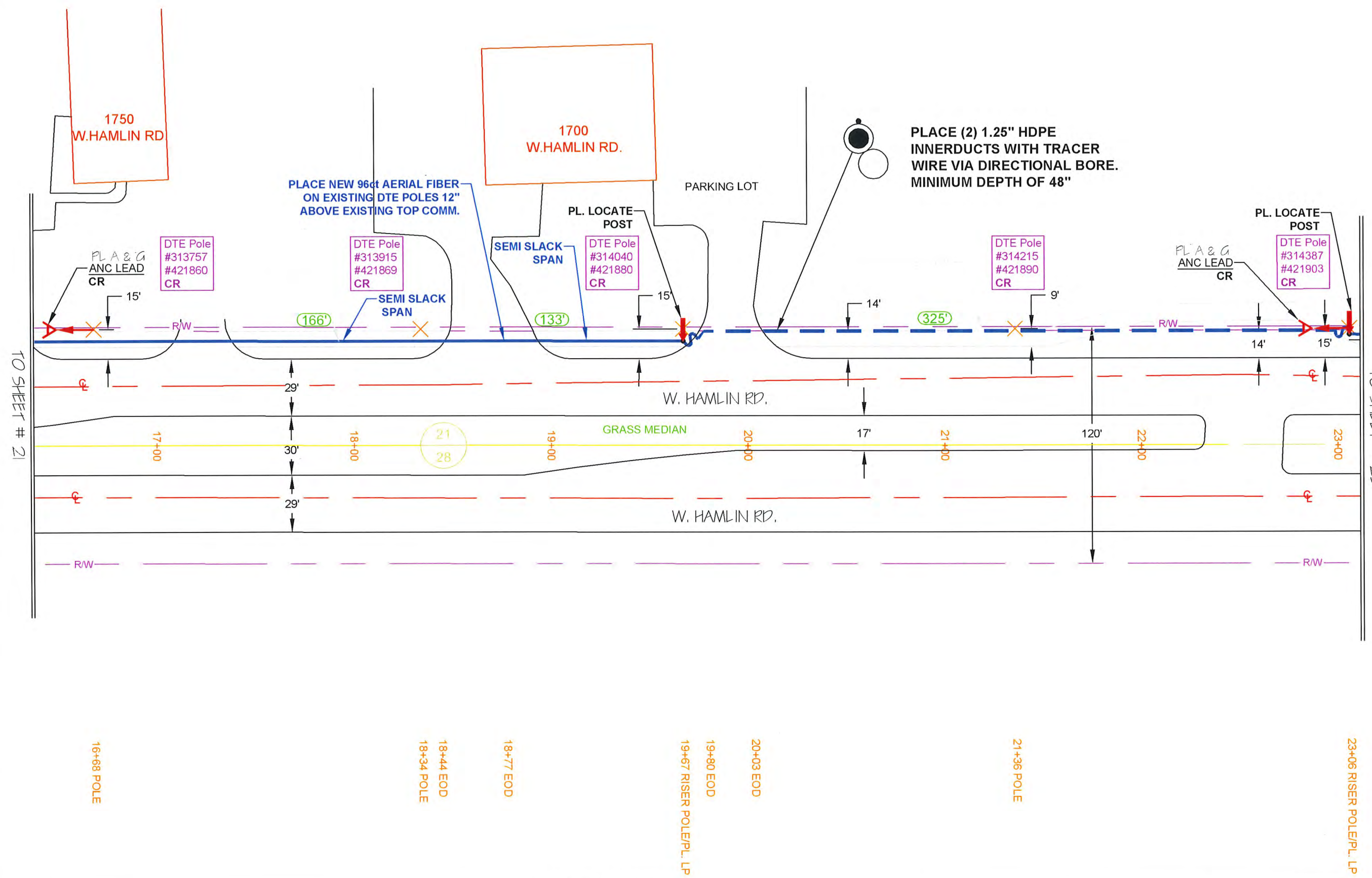
DRAWN BY: RAMTACH DATE: 07/05/18

AS-BUILTS BY: DATE:

ENGINEERED BY: RA DRAWING SCALE: 1" = 50'

JOB NUMBER: 0012

DRAWING NUMBER: 22 OF 38



PLACE (2) 1.25" HDPE INNERDUCTS WITH TRACER WIRE VIA DIRECTIONAL BORE. MINIMUM DEPTH OF 48"

PLACE NEW 96ct AERIAL FIBER ON EXISTING DTE POLES 12" ABOVE EXISTING TOP COMM.

NOTES:

PROPRIETARY INFORMATION NOT FOR DISCLOSURE
This set of plans contains confidential or proprietary information, and the recipient must not disclose, copy, re-create, or distribute the plans or the information contained therein, either directly or indirectly, to other entities or individuals without written or express permission from Clear Rate Communications.

NOTE:
UTILITY LOCATIONS ARE APPROXIMATE ONLY. ALL UTILITIES MUST BE LOCATED PRIOR TO ANY EXCAVATION ACTIVITIES.

PLEASE CONTACT: MISSDIG 1-800-482-7171 72 HRS. PRIOR TO EXCAVATION



SYMBOLS

- 2 X 1.25" HDPE SDR-11 INNERDUCTS / TRACER WIRE
- 0+00 STATION MARKER
- STORAGE LOOP
- PROPOSED ANCHOR/GUY
- BOND TO GROUND
- GROUNDING
- Existing Handhole
- Proposed Handhole
- Existing Manhole
- Proposed Manhole
- Stream/River
- CITY/TWP LINE
- ROAD C/L
- R/R TRACKS
- R/W LINE
- FENCE
- NEW AERIAL CABLE
- NEW BURIED CABLE
- WATER LINE
- GAS LINE
- POWER LINE
- SAN. SEWER
- STORM SEWER
- Proposed Splice
- Existing Splice
- WATER VALVE/METER
- GAS VALVE
- HOUSE/BUILDING
- Existing Power Pole
- Foreign Pole (Tel)
- Transmission Pole

CAUTION
FOREIGN UTILITY LOCATION ARE APPROXIMATE. CONTACT THE LOCAL ONE CALL AGENCY 72 HOURS PRIOR TO CONSTRUCTION FOR EXACT UTILITY LOCATIONS AT:

MISS DIG
1-800-482-7171

REVISIONS

REV. #	DESCRIPTION	BY	DATE
		XXX	XX/XX/XX

CABLE AND INNERDUCT DESCRIPTION

CABLE FIBER COUNT: 96 ct. FOC
INNERDUCT:

ARNOLD TRACHT DDS & DANIEL BRISKIE DDS, PC
1814 S. ROCHESTER RD.
ROCHESTER HILLS, MI

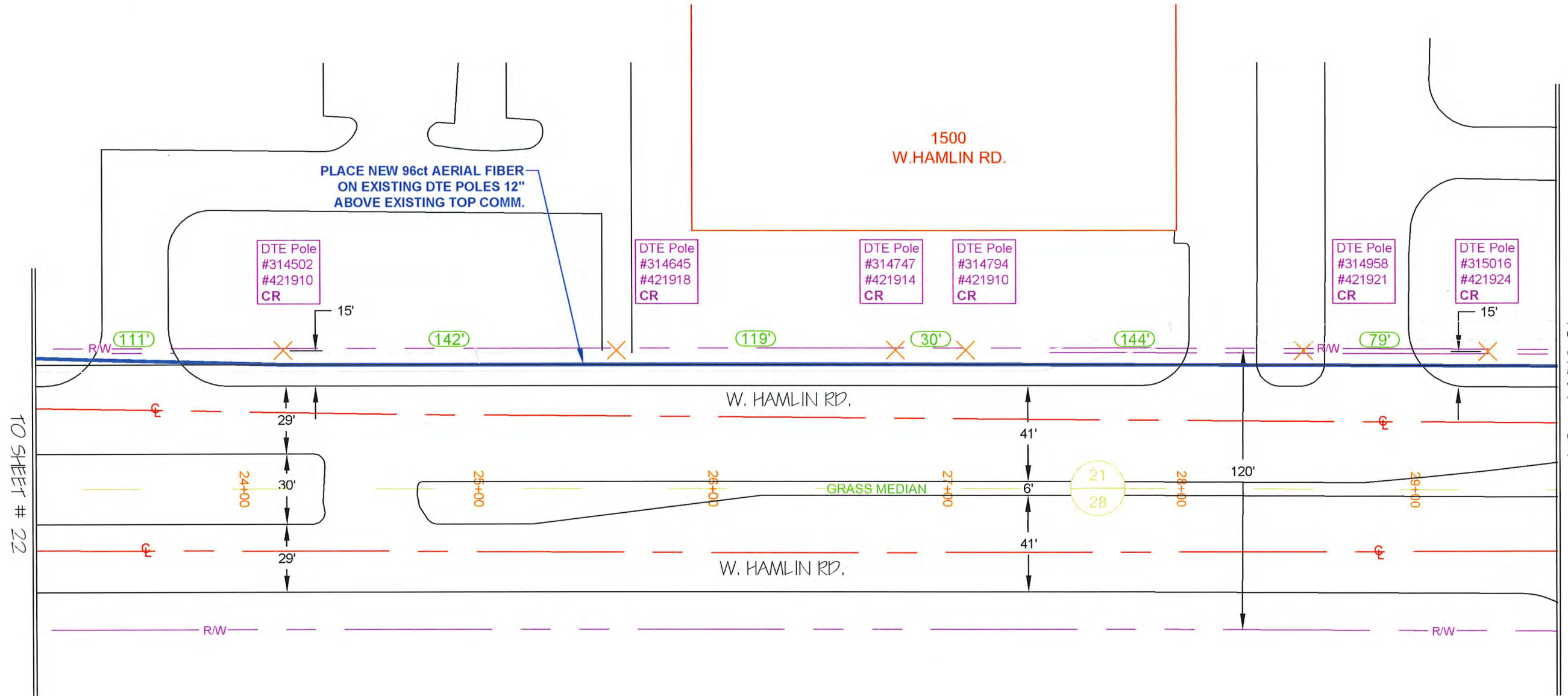
DRAWN BY : RAMT+CH DATE: 07/05/18

AS-BUILTS BY : DATE:

ENGINEERED BY: RA DRAWING SCALE: 1" = 50'

JOB NUMBER: 0012

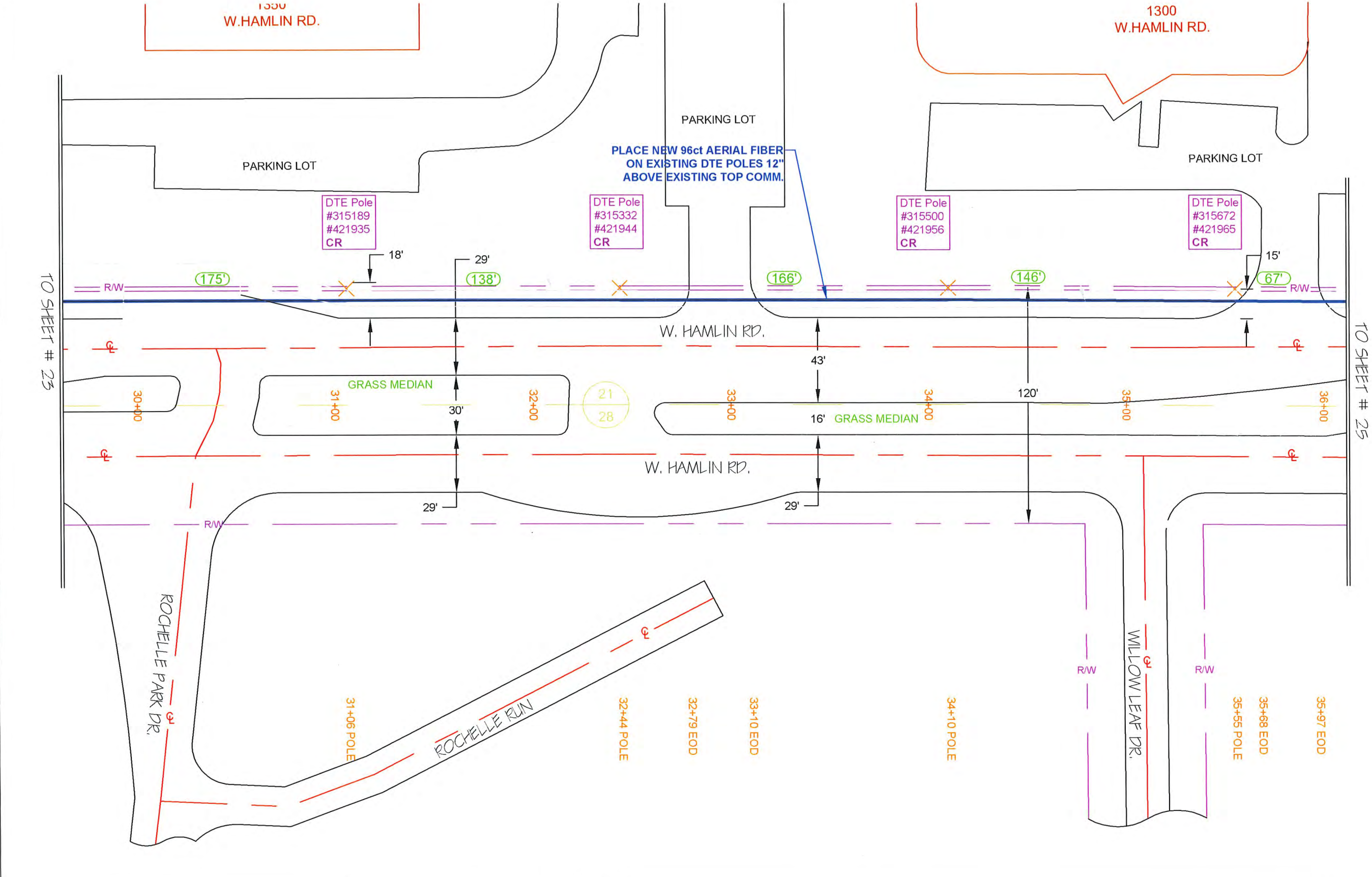
DRAWING NUMBER : 23 OF 38



NOTES:

PROPRIETARY INFORMATION NOT FOR DISCLOSURE
This set of plans contains confidential or proprietary information, and the recipient must not disclose, copy, re-create, or distribute the plans or the information contained therein, either directly or indirectly, to other entities or individuals without written or express permission from Clear Rate Communications.





ARNOLD TRACHT DDS & DANIEL BRISKIE DDS, PC
1814 S. ROCHESTER RD.
ROCHESTER HILLS, MI

SYMBOLS

2 X 1.25" HOPE SDR-11 INNERDUCTS / TRACER WIRE	Proposed Splice
0+00 STATION MARKER	Existing Splice
STORAGE LOOP	WATER VALVE/METER
PROPOSED ANCHOR/GUY	GAS VALVE
BOND TO GROUND	HOUSE/BUILDING
GROUNDING	Existing Power Pole
Existing Handhole	Foreign Pole (Tel)
Proposed Handhole	Transmission Pole
Existing Manhole	
Proposed Manhole	

STREAM/RIVER

CITY/TWP LINE

ROAD C/L

R/R TRACKS

R/W LINE

FENCE

NEW AERIAL CABLE

NEW BURIED CABLE

WATER LINE

GAS LINE

POWER LINE

SAN. SEWER

STORM SEWER

CAUTION
FOREIGN UTILITY LOCATION ARE APPROXIMATE. CONTACT THE LOCAL ONE CALL AGENCY 72 HOURS PRIOR TO CONSTRUCTION FOR EXACT UTILITY LOCATIONS AT:

MISS DIG
1-800-482-7171



REVISIONS

REV. #	DESCRIPTION	BY	DATE
1		XXX	XX/XX/XX

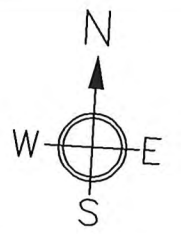
CABLE AND INNERDUCT DESCRIPTION
CABLE FIBER COUNT: 96 ct. FOC
INNERDUCT:

ARNOLD TRACHT DDS & DANIEL BRISKIE DDS, PC
1814 S. ROCHESTER RD.
ROCHESTER HILLS, MI

DRAWN BY : RAMTUCH	DATE: 07/05/18
AS-BUILTS BY :	DATE:
ENGINEERED BY: RA	DRAWING SCALE: 1" = 50'
JOB NUMBER: 0012	
DRAWING NUMBER : 24 OF 38	

NOTES:

PROPRIETARY INFORMATION NOT FOR DISCLOSURE
This set of plans contains confidential or proprietary information, and the recipient must not disclose, copy, re-create, or distribute the plans or the information contained therein, either directly or indirectly, to other entities or individuals without written or express permission from Clear Rate Communications.



SYMBOLS

- 2 X 1.25" HDPE SDR-11 INNERDUCTS / TRACER WIRE
- 0+00 STATION MARKER
- STORAGE LOOP
- PROPOSED ANCHOR/GUY
- BOND TO GROUND
- GROUNDING
- Existing Handhole
- Proposed Handhole
- Existing Manhole
- Proposed Manhole
- Proposed Splice
- Existing Splice
- WATER VALVE/METER
- GAS VALVE
- HOUSE/BUILDING
- Existing Power Pole
- Foreign Pole (Tel)
- Transmission Pole
- STREAM/RIVER
- CITY/TWP LINE
- ROAD C/L
- R/R TRACKS
- R/W LINE
- FENCE
- NEW AERIAL CABLE
- NEW BURIED CABLE
- WATER LINE
- GAS LINE
- POWER LINE
- SAN. SEWER
- STORM SEWER

CAUTION
FOREIGN UTILITY LOCATION ARE APPROXIMATE. CONTACT THE LOCAL ONE CALL AGENCY 72 HOURS PRIOR TO CONSTRUCTION FOR EXACT UTILITY LOCATIONS AT:

MISS DIG
1-800-482-7171

REVISIONS

REV. #	DESCRIPTION	BY	DATE

CABLE AND INNERDUCT DESCRIPTION

CABLE FIBER COUNT: 96 ct. FOC
INNERDUCT:

ARNOLD TRACHT DDS & DANIEL BRISKIE DDS, PC
1814 S. ROCHESTER RD.
ROCHESTER HILLS, MI

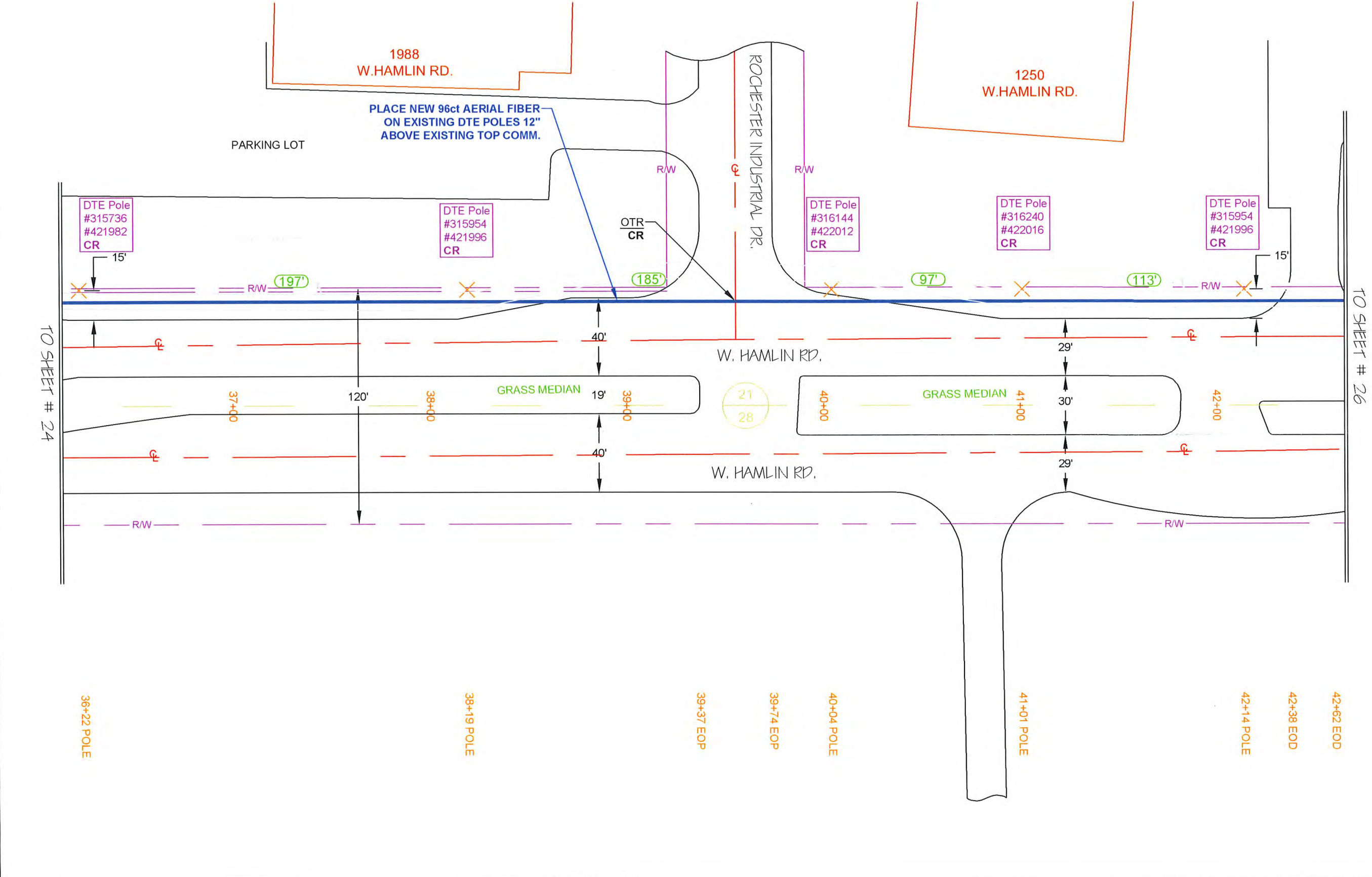
DRAWN BY : RAMT+CH DATE: 07/05/18

AS-BUILTS BY : DATE:

ENGINEERED BY: RA DRAWING SCALE: 1" = 50'

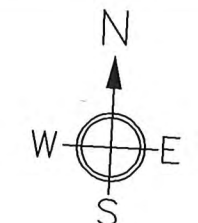
JOB NUMBER: 0012

DRAWING NUMBER : 25 OF 38



NOTES:

PROPRIETARY INFORMATION NOT FOR DISCLOSURE
This set of plans contains confidential or proprietary information, and the recipient must not disclose, copy, re-create, or distribute the plans or the information contained therein, either directly or indirectly, to other entities or individuals without written or express permission from Clear Rate Communications.



SYMBOLS

- 2 X 1.25" HDPE SDR-11 INNERDUCTS / TRACER WIRE
- 0+00 STATION MARKER
- STORAGE LOOP
- PROPOSED ANCHOR/GUY
- BOND TO GROUND
- GROUNDING
- Existing Handhole
- Proposed Handhole
- Existing Manhole
- Proposed Manhole
- Proposed Splice
- Existing Splice
- WATER VALVE/METER
- GAS VALVE
- HOUSE/BUILDING
- Existing Power Pole
- Foreign Pole (Tel)
- Transmission Pole
- STREAM/RIVER
- CITY/TWP LINE
- ROAD C/L
- R/R TRACKS
- R/W LINE
- FENCE
- NEW AERIAL CABLE
- NEW BURIED CABLE
- WATER LINE
- GAS LINE
- POWER LINE
- SAN. SEWER
- STORM SEWER

CAUTION
FOREIGN UTILITY LOCATION ARE APPROXIMATE. CONTACT THE LOCAL ONE CALL AGENCY 72 HOURS PRIOR TO CONSTRUCTION FOR EXACT UTILITY LOCATIONS AT:

MISS DIG
1-800-482-7171

REVISIONS

REV. #	DESCRIPTION	BY	DATE

CABLE AND INNERDUCT DESCRIPTION

CABLE FIBER COUNT: 96 ct. FOC
INNERDUCT: PL. (2) 1.25" SDR-11 HDPE W/TRACER WIRE

ARNOLD TRACHT DDS & DANIEL BRISKIE DDS, PC
1814 S. ROCHESTER RD.
ROCHESTER HILLS, MI

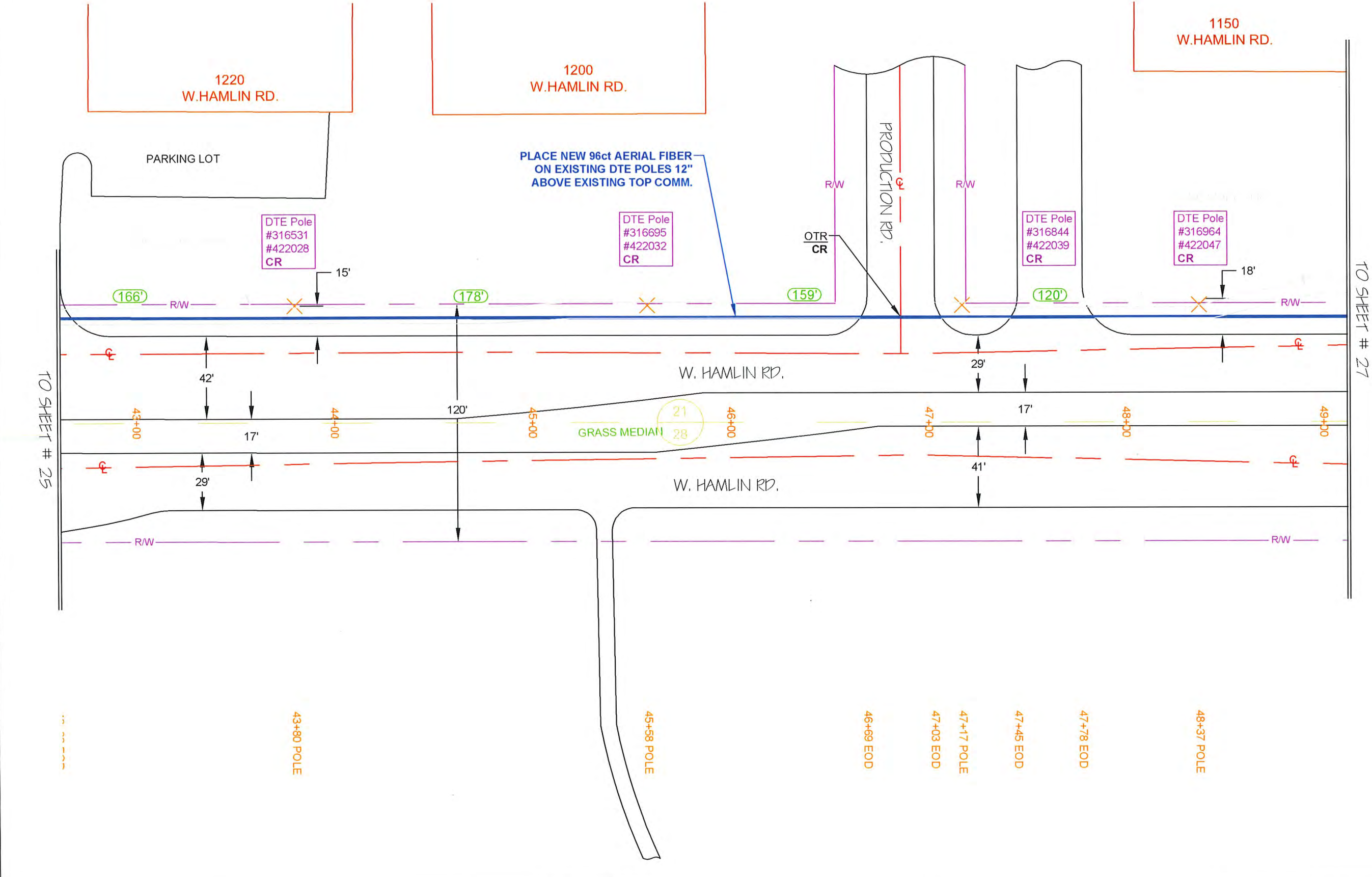
DRAWN BY : RAMTCH DATE: 07/05/18

AS-BUILTS BY : DATE:

ENGINEERED BY: RA DRAWING SCALE: 1" = 50'

JOB NUMBER: 0012

DRAWING NUMBER : 26 OF 38



NOTES:

PROPRIETARY INFORMATION NOT FOR DISCLOSURE
This set of plans contains confidential or proprietary information, and the recipient must not disclose, copy, re-create, or distribute the plans or the information contained therein, either directly or indirectly, to other entities or individuals without written or express permission from Clear Rate Communications.

NOTE:
UTILITY LOCATIONS ARE APPROXIMATE ONLY. ALL UTILITIES MUST BE LOCATED PRIOR TO ANY EXCAVATION ACTIVITIES.

PLEASE CONTACT: MISSDIG 1-800-482-7171
72 HRS. PRIOR TO EXCAVATION

