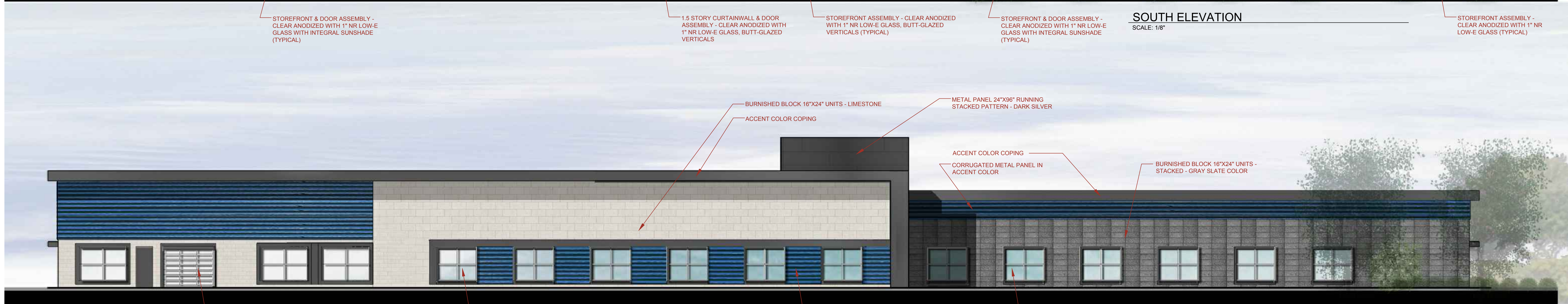




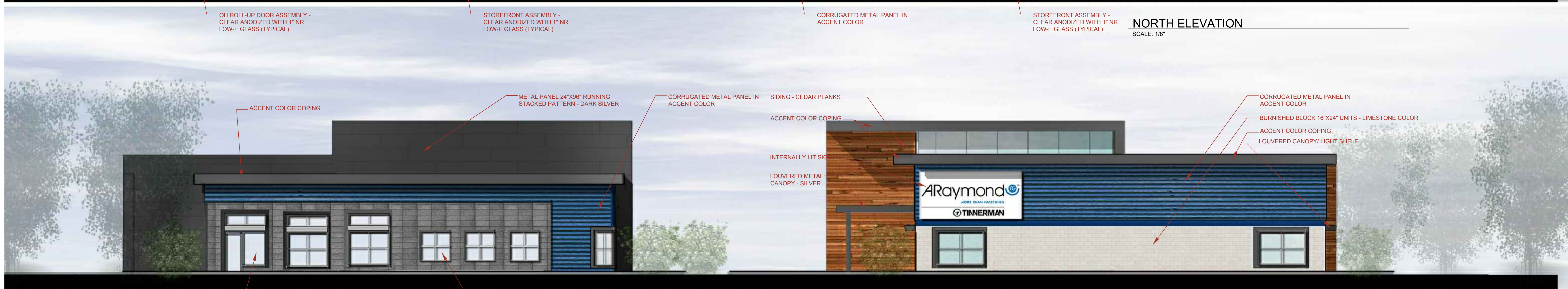
- CORRUGATED METAL PANEL IN ACCENT COLOR
- BURNISHED BLOCK 16"x24" UNITS - STACKED - GRAY SLATE COLOR
- SIDING - CEDAR PLANKS
- ACCENT COLOR COPING
- LOUVERED METAL CANOPY - SILVER
- PINNED LETTERS SIGN WITH BACK LIGHTING
- CORRUGATED METAL PANEL IN ACCENT COLOR
- BURNISHED BLOCK 16"x24" UNITS
- ACCENT COLOR COPING
- LOUVERED CANOPY/LIGHT SHELF
- STOREFRONT & DOOR ASSEMBLY - CLEAR ANODIZED WITH 1" NR LOW-E GLASS WITH INTEGRAL SUNSHADE (TYPICAL)
- 1.5 STORY CURTAINWALL & DOOR ASSEMBLY - CLEAR ANODIZED WITH 1" NR LOW-E GLASS, BUTT-GLAZED VERTICALS
- STOREFRONT ASSEMBLY - CLEAR ANODIZED WITH 1" NR LOW-E GLASS, BUTT-GLAZED VERTICALS (TYPICAL)
- STOREFRONT & DOOR ASSEMBLY - CLEAR ANODIZED WITH 1" NR LOW-E GLASS WITH INTEGRAL SUNSHADE (TYPICAL)
- STOREFRONT ASSEMBLY - CLEAR ANODIZED WITH 1" NR LOW-E GLASS (TYPICAL)

SOUTH ELEVATION
SCALE: 1/8"



- BURNISHED BLOCK 16"x24" UNITS - LIMESTONE
- ACCENT COLOR COPING
- METAL PANEL 24"x96" RUNNING STACKED PATTERN - DARK SILVER
- ACCENT COLOR COPING
- CORRUGATED METAL PANEL IN ACCENT COLOR
- BURNISHED BLOCK 16"x24" UNITS - STACKED - GRAY SLATE COLOR
- OH ROLL-UP DOOR ASSEMBLY - CLEAR ANODIZED WITH 1" NR LOW-E GLASS (TYPICAL)
- STOREFRONT ASSEMBLY - CLEAR ANODIZED WITH 1" NR LOW-E GLASS (TYPICAL)
- CORRUGATED METAL PANEL IN ACCENT COLOR
- STOREFRONT ASSEMBLY - CLEAR ANODIZED WITH 1" NR LOW-E GLASS (TYPICAL)

NORTH ELEVATION
SCALE: 1/8"



- ACCENT COLOR COPING
- METAL PANEL 24"x96" RUNNING STACKED PATTERN - DARK SILVER
- CORRUGATED METAL PANEL IN ACCENT COLOR
- SIDING - CEDAR PLANKS
- ACCENT COLOR COPING
- INTERNALLY LIT SIGN
- LOUVERED METAL CANOPY - SILVER
- CORRUGATED METAL PANEL IN ACCENT COLOR
- BURNISHED BLOCK 16"x24" UNITS - LIMESTONE COLOR
- ACCENT COLOR COPING
- LOUVERED CANOPY/LIGHT SHELF
- STOREFRONT & DOOR ASSEMBLY - CLEAR ANODIZED WITH 1" NR LOW-E GLASS WITH INTEGRAL SUNSHADE (TYPICAL)
- STOREFRONT ASSEMBLY - CLEAR ANODIZED WITH 1" NR LOW-E GLASS (TYPICAL)

WEST ELEVATION
SCALE: 1/8"

EAST ELEVATION
SCALE: 1/8"