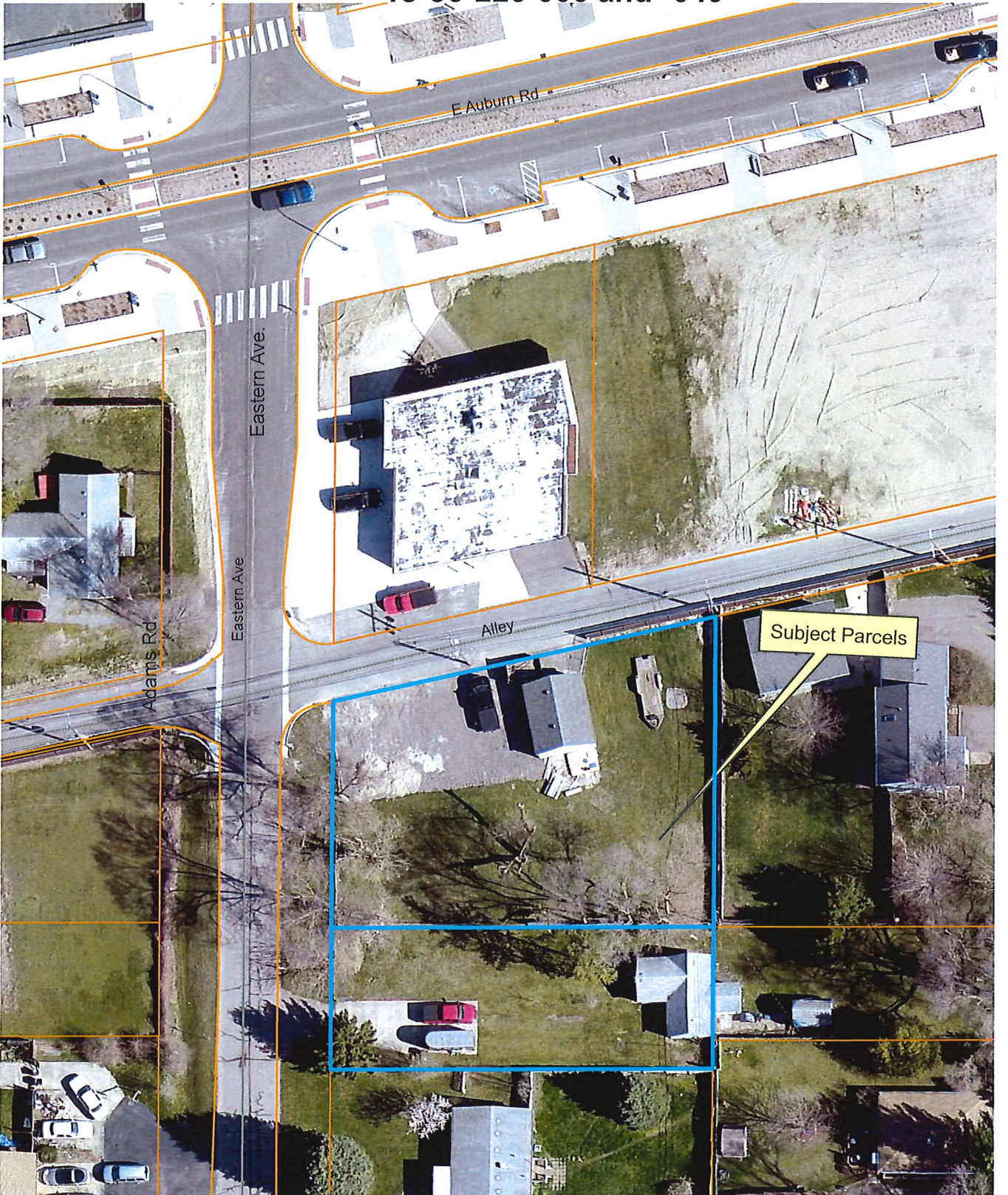


# Location Map

## Purchase of Parcels

### 15-36-226-006 and -049



**Legend**

	Traveled and Street Name
	Surface (2nd/3rd/4th)
	Boundary
	Intake Service & Energy or Other Utility Service
	ARC
	Par. 15-11-1
	Gen. 15-11-2
	Gen. 15-11-3

Aerial photographs as of April 2015  
 TaxParcel lines were obtained on 2/17/17 from Oakland County.  
 Although the information provided by this map is believed to be reliable, its accuracy is not warranted in any way. The City of Rochester Hills assumes no liability for any claims arising from the use of this map.

5/1/17

1 inch = 50 feet